



DRILL STEM TEST REPORT

Prepared For: **American Warrior Inc.**

PO Box 399
Garden City, KS 67846

ATTN: Kevin Timson

O'brate-Finney #3-5

5-23s-32w Finney,KS

Start Date: 2015.01.04 @ 20:09:00

End Date: 2015.01.05 @ 07:46:00

Job Ticket #: 56589 DST #: 1

Trilobite Testing, Inc
1515 Commerce Parkway Hays, KS 67601
ph: 785-625-4778 fax: 785-625-5620

Printed: 2015.01.08 @ 14:47:17



**TRILOBITE
TESTING, INC**

DRILL STEM TEST REPORT

American Warrior Inc.
PO Box 399
Garden City, KS 67846
ATTN: Kevin Timson

5-23s-32w Finney,KS
O'brate-Finney #3-5
Job Ticket: 56589 **DST#: 1**
Test Start: 2015.01.04 @ 20:09:00

GENERAL INFORMATION:

Formation: **Morrow**
Deviated: No Whipstock: ft (KB)
Time Tool Opened: 03:11:00
Time Test Ended: 07:46:00
Interval: **4676.00 ft (KB) To 4727.00 ft (KB) (TVD)**
Total Depth: 4727.00 ft (KB) (TVD)
Hole Diameter: 7.88 inches Hole Condition: Good
Test Type: Conventional Bottom Hole (Initial)
Tester: Cornelio Landa III
Unit No: 44
Reference Elevations: 2859.00 ft (KB)
2848.00 ft (CF)
KB to GR/CF: 11.00 ft

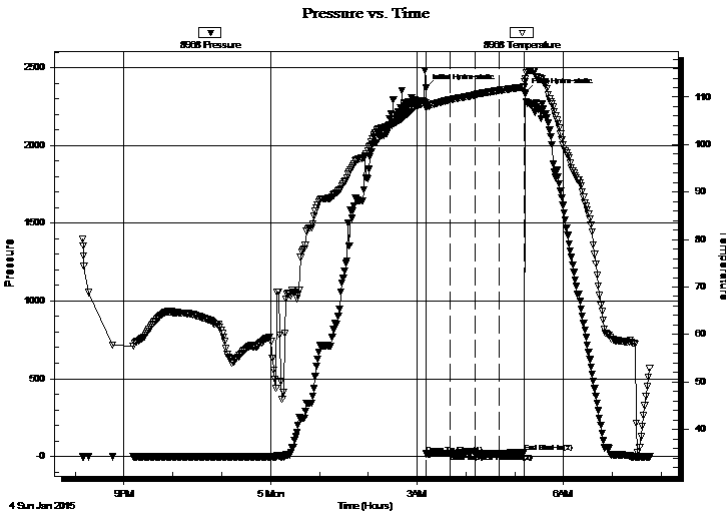
Serial #: 8968

Outside

Press@RunDepth: 19.89 psig @ 4678.00 ft (KB) Capacity: 8000.00 psig
Start Date: 2015.01.04 End Date: 2015.01.05 Last Calib.: 2015.01.05
Start Time: 20:09:05 End Time: 07:46:00 Time On Btm: 2015.01.05 @ 03:10:45
Time Off Btm: 2015.01.05 @ 05:12:30

TEST COMMENT: IF: Weak surface blow -Built to 1/8"
IS: No return
FF: No blow
FS: No return

PRESSURE SUMMARY



Time (Min.)	Pressure (psig)	Temp (deg F)	Annotation
0	2369.50	108.84	Initial Hydro-static
1	16.96	107.77	Open To Flow (1)
31	19.03	109.48	Shut-In(1)
60	32.46	110.41	End Shut-In(1)
61	19.15	110.45	Open To Flow (2)
91	19.89	111.43	Shut-In(2)
121	26.35	112.11	End Shut-In(2)
122	2339.77	113.32	Final Hydro-static

Recovery

Length (ft)	Description	Volume (bbl)
5.00	Mud 100m	0.07

Gas Rates

Choke (inches)	Pressure (psig)	Gas Rate (Mcf/d)



**TRILOBITE
TESTING, INC**

DRILL STEM TEST REPORT

TOOL DIAGRAM

American Warrior Inc.

5-23s-32w Finney,KS

PO Box 399
Garden City, KS 67846

O'brate-Finney #3-5

Job Ticket: 56589

DST#: 1

ATTN: Kevin Timson

Test Start: 2015.01.04 @ 20:09:00

Tool Information

Drill Pipe:	Length: 4673.00 ft	Diameter: 3.80 inches	Volume: 65.55 bbl	Tool Weight:	2500.00 lb
Heavy Wt. Pipe:	Length: 0.00 ft	Diameter: 0.00 inches	Volume: 0.00 bbl	Weight set on Packer:	26000.00 lb
Drill Collar:	Length: 0.00 ft	Diameter: 0.00 inches	Volume: 0.00 bbl	Weight to Pull Loose:	10000.00 lb
			<u>Total Volume: 65.55 bbl</u>	Tool Chased	0.00 ft
Drill Pipe Above KB:	24.00 ft			String Weight: Initial	64000.00 lb
Depth to Top Packer:	4676.00 ft			Final	64000.00 lb
Depth to Bottom Packer:	ft				
Interval between Packers:	51.00 ft				
Tool Length:	78.00 ft				
Number of Packers:	2	Diameter: 6.75 inches			

Tool Comments:

Tool Description

Tool Description	Length (ft)	Serial No.	Position	Depth (ft)	Accum. Lengths
Change Over Sub	1.00			4650.00	
Shut In Tool	5.00			4655.00	
Hydraulic tool	5.00			4660.00	
Jars	5.00			4665.00	
Safety Joint	2.00			4667.00	
Packer	5.00			4672.00	27.00 Bottom Of Top Packer
Packer	4.00			4676.00	
Stubb	1.00			4677.00	
Change Over Sub	1.00			4678.00	
Recorder	0.00	8969	Inside	4678.00	
Recorder	0.00	8968	Outside	4678.00	
Drill Pipe	32.00			4710.00	
Change Over Sub	1.00			4711.00	
Perforations	13.00			4724.00	
Bullnose	3.00			4727.00	51.00 Bottom Packers & Anchor

Total Tool Length: 78.00



**TRILOBITE
TESTING, INC**

DRILL STEM TEST REPORT

FLUID SUMMARY

American Warrior Inc.

5-23s-32w Finney,KS

PO Box 399
Garden City, KS 67846

O'brate-Finney #3-5

Job Ticket: 56589

DST#: 1

ATTN: Kevin Timson

Test Start: 2015.01.04 @ 20:09:00

Mud and Cushion Information

Mud Type: Gel Chem

Cushion Type:

Oil API:

deg API

Mud Weight: 10.00 lb/gal

Cushion Length:

ft

Water Salinity:

ppm

Viscosity: 49.00 sec/qt

Cushion Volume:

bbbl

Water Loss: 7.92 in³

Gas Cushion Type:

Resistivity: 0.00 ohm.m

Gas Cushion Pressure:

psig

Salinity: 2400.00 ppm

Filter Cake: 1.00 inches

Recovery Information

Recovery Table

Length ft	Description	Volume bbl
5.00	Mud 100m	0.070

Total Length: 5.00 ft Total Volume: 0.070 bbl

Num Fluid Samples: 0

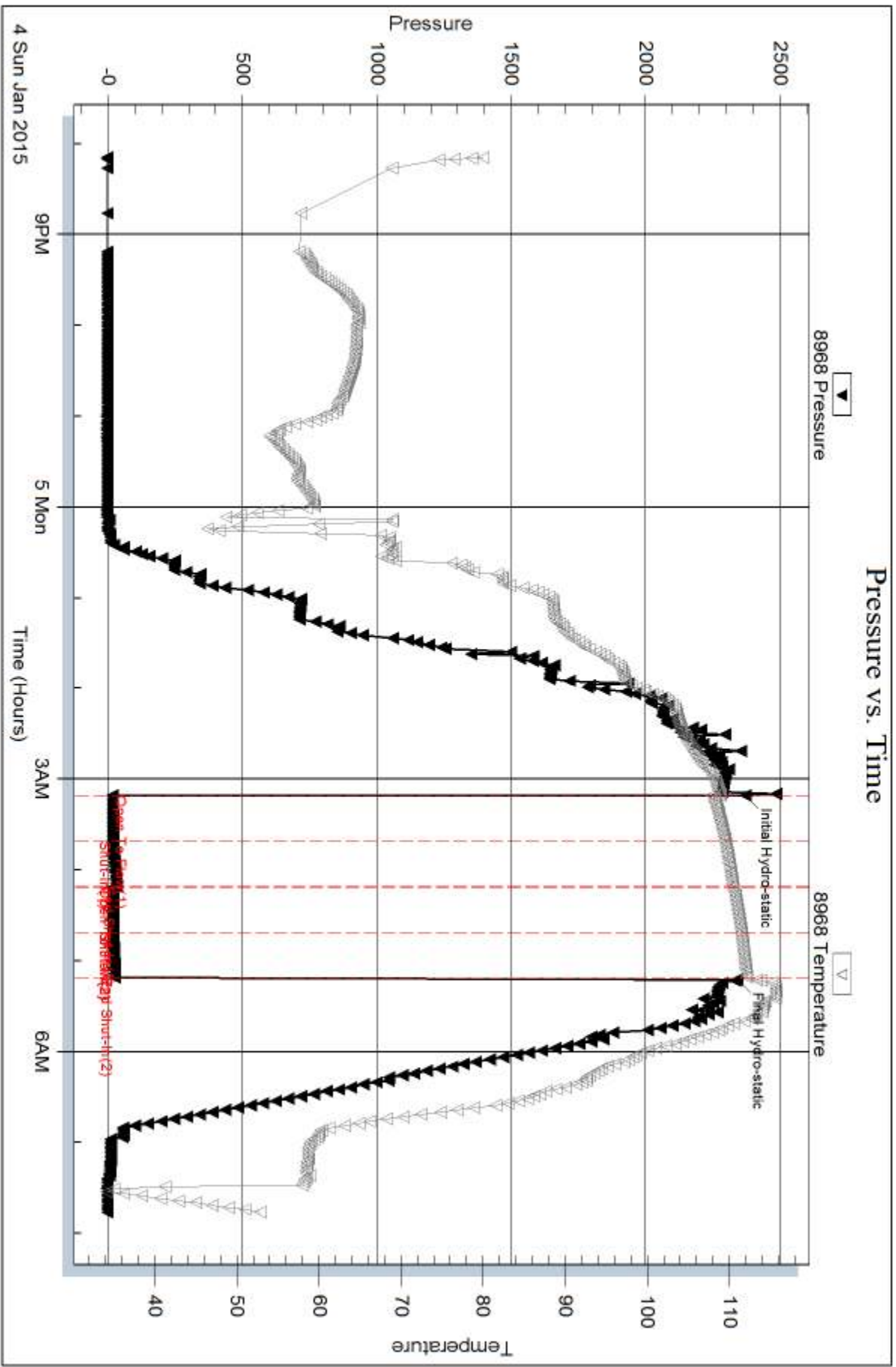
Num Gas Bombs: 0

Serial #:

Laboratory Name:

Laboratory Location:

Recovery Comments:



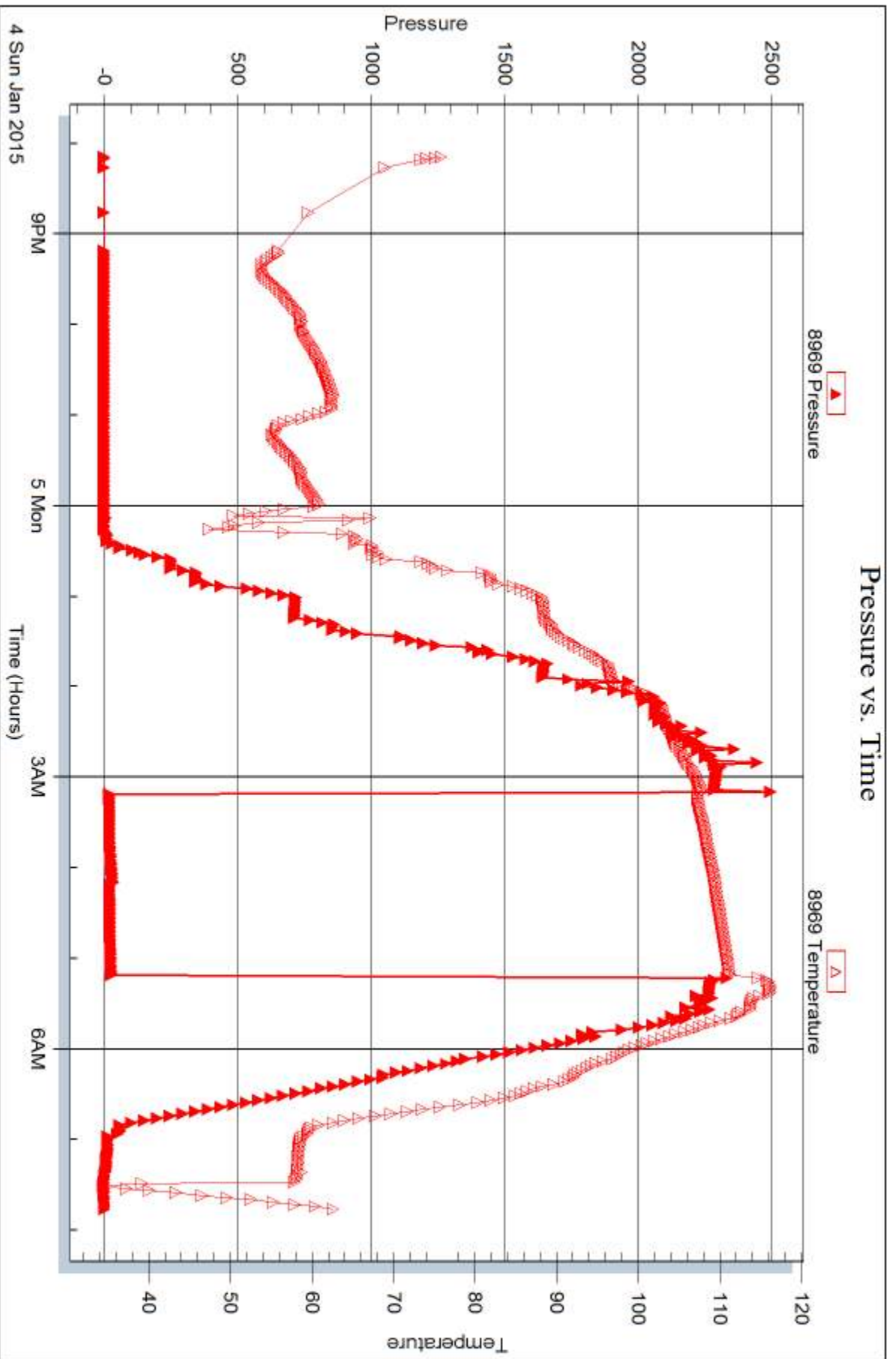
Serial #: 8969

Inside

American Warrior Inc.

Obrate-Finney #3-5

DST Test Number: 1



Trilobite Testing, Inc

Ref. No: 56589

Printed: 2015.01.08 @ 14:47:18



DRILL STEM TEST REPORT

Prepared For: **American Warrior Inc.**

PO Box 399
Garden City, KS 67846

ATTN: Kevin Timson

O'brate-Finney #3-5

5-23s-32w Finney,KS

Start Date: 2015.01.05 @ 17:32:00

End Date: 2015.01.06 @ 01:53:30

Job Ticket #: 56590 DST #: 2

Trilobite Testing, Inc
1515 Commerce Parkway Hays, KS 67601
ph: 785-625-4778 fax: 785-625-5620

Printed: 2015.01.08 @ 14:46:55



**TRILOBITE
TESTING, INC**

DRILL STEM TEST REPORT

American Warrior Inc.
PO Box 399
Garden City, KS 67846
ATTN: Kevin Timson

5-23s-32w Finney,KS
O'brate-Finney #3-5
Job Ticket: 56590 **DST#: 2**
Test Start: 2015.01.05 @ 17:32:00

GENERAL INFORMATION:

Formation: **Morrow**
Deviated: No Whipstock: ft (KB)
Time Tool Opened: 20:33:00
Time Test Ended: 01:53:30
Interval: **4677.00 ft (KB) To 4756.00 ft (KB) (TVD)**
Total Depth: 4756.00 ft (KB) (TVD)
Hole Diameter: 7.88 inches Hole Condition: Good
Test Type: Conventional Bottom Hole (Reset)
Tester: Cornelio Landa III
Unit No: 44
Reference Elevations: 2859.00 ft (KB)
2848.00 ft (CF)
KB to GR/CF: 11.00 ft

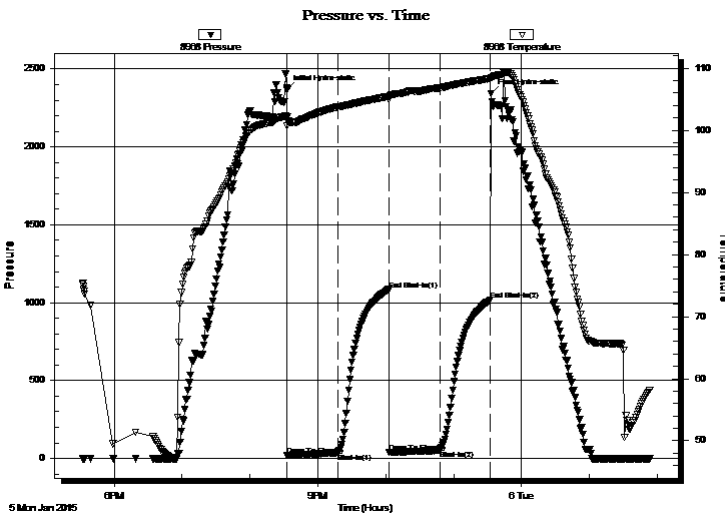
Serial #: 8968

Outside

Press@RunDepth: 51.16 psig @ 4679.00 ft (KB) Capacity: 8000.00 psig
Start Date: 2015.01.05 End Date: 2015.01.06 Last Calib.: 2015.01.06
Start Time: 17:32:05 End Time: 01:53:29 Time On Btm: 2015.01.05 @ 20:32:45
Time Off Btm: 2015.01.05 @ 23:33:15

TEST COMMENT: IF: Weak surface blow -Built to 2 1/2"
IS: No return
FF: Weak surface blow throughout
FS: No return

PRESSURE SUMMARY



Time (Min.)	Pressure (psig)	Temp (deg F)	Annotation
0	2366.94	102.15	Initial Hydro-static
1	19.28	100.78	Open To Flow (1)
46	35.43	103.78	Shut-In(1)
90	1081.33	105.45	End Shut-In(1)
90	37.94	104.89	Open To Flow (2)
135	51.16	106.83	Shut-In(2)
180	1015.25	108.31	End Shut-In(2)
181	2341.06	108.48	Final Hydro-static

Recovery

Length (ft)	Description	Volume (bbl)
64.00	Mud 100m	0.90

* Recovery from multiple tests

Gas Rates

	Choke (inches)	Pressure (psig)	Gas Rate (Mcf/d)



**TRILOBITE
TESTING, INC**

DRILL STEM TEST REPORT

TOOL DIAGRAM

American Warrior Inc.

5-23s-32w Finney,KS

PO Box 399
Garden City, KS 67846

O'brate-Finney #3-5

Job Ticket: 56590

DST#: 2

ATTN: Kevin Timson

Test Start: 2015.01.05 @ 17:32:00

Tool Information

Drill Pipe:	Length: 4673.00 ft	Diameter: 3.80 inches	Volume: 65.55 bbl	Tool Weight:	2500.00 lb
Heavy Wt. Pipe:	Length: 0.00 ft	Diameter: 0.00 inches	Volume: 0.00 bbl	Weight set on Packer:	28000.00 lb
Drill Collar:	Length: 0.00 ft	Diameter: 0.00 inches	Volume: 0.00 bbl	Weight to Pull Loose:	13000.00 lb
			<u>Total Volume: 65.55 bbl</u>	Tool Chased	0.00 ft
Drill Pipe Above KB:	23.00 ft			String Weight: Initial	66000.00 lb
Depth to Top Packer:	4677.00 ft			Final	66000.00 lb
Depth to Bottom Packer:	ft				
Interval between Packers:	79.00 ft				
Tool Length:	106.00 ft				
Number of Packers:	2	Diameter: 6.75 inches			

Tool Comments:

Tool Description

Tool Description	Length (ft)	Serial No.	Position	Depth (ft)	Accum. Lengths
Change Over Sub	1.00			4651.00	
Shut In Tool	5.00			4656.00	
Hydraulic tool	5.00			4661.00	
Jars	5.00			4666.00	
Safety Joint	2.00			4668.00	
Packer	5.00			4673.00	27.00 Bottom Of Top Packer
Packer	4.00			4677.00	
Stubb	1.00			4678.00	
Change Over Sub	1.00			4679.00	
Recorder	0.00	8969	Inside	4679.00	
Recorder	0.00	8968	Outside	4679.00	
Drill Pipe	63.00			4742.00	
Change Over Sub	1.00			4743.00	
Perforations	10.00			4753.00	
Bullnose	3.00			4756.00	79.00 Bottom Packers & Anchor

Total Tool Length: 106.00



**TRILOBITE
TESTING, INC**

DRILL STEM TEST REPORT

FLUID SUMMARY

American Warrior Inc.

5-23s-32w Finney,KS

PO Box 399
Garden City, KS 67846

O'brate-Finney #3-5

Job Ticket: 56590

DST#: 2

ATTN: Kevin Timson

Test Start: 2015.01.05 @ 17:32:00

Mud and Cushion Information

Mud Type: Gel Chem

Cushion Type:

Oil API:

deg API

Mud Weight: 9.00 lb/gal

Cushion Length:

ft

Water Salinity:

ppm

Viscosity: 51.00 sec/qt

Cushion Volume:

bbbl

Water Loss: 8.73 in³

Gas Cushion Type:

Resistivity: 0.00 ohm.m

Gas Cushion Pressure:

psig

Salinity: 3500.00 ppm

Filter Cake: 1.00 inches

Recovery Information

Recovery Table

Length ft	Description	Volume bbl
64.00	Mud 100m	0.898

Total Length: 64.00 ft Total Volume: 0.898 bbl

Num Fluid Samples: 0

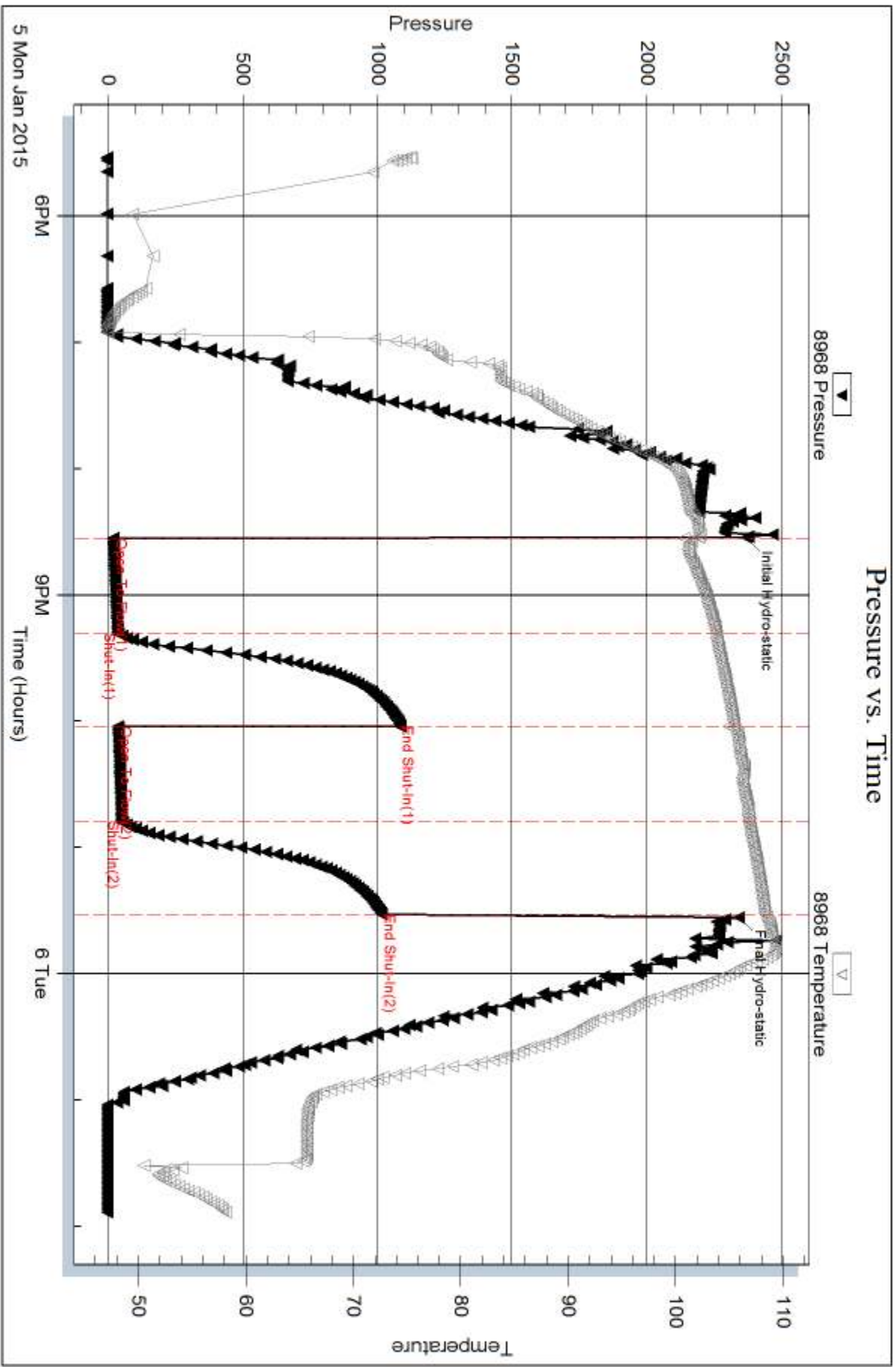
Num Gas Bombs: 0

Serial #:

Laboratory Name:

Laboratory Location:

Recovery Comments:



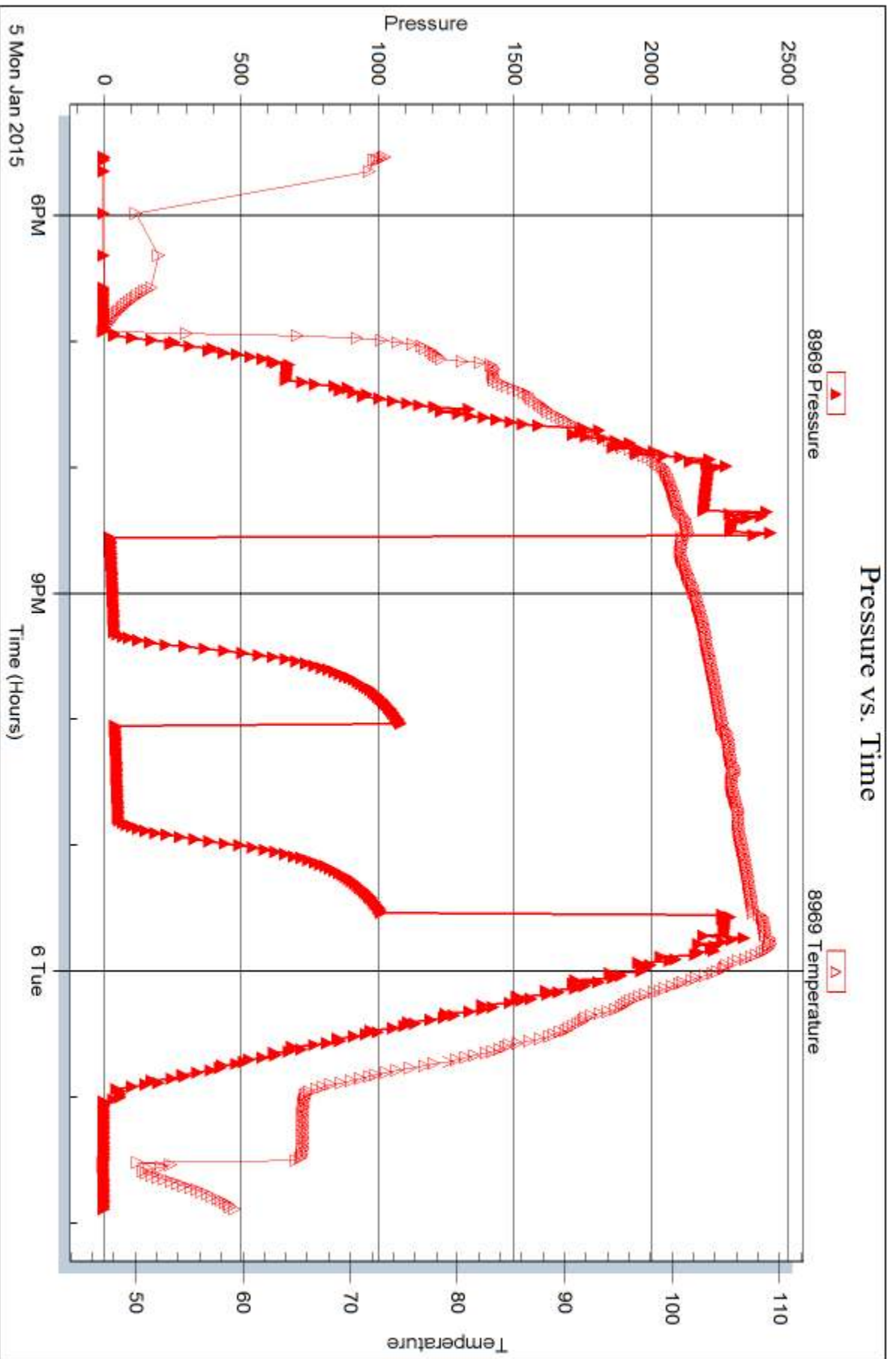
Serial #: 8969

Inside

American Warrior Inc.

Obrate-Finney #3-5

DST Test Number: 2



Trilobite Testing, Inc

Ref. No: 56590

Printed: 2015.01.08 @ 14:46:56



DRILL STEM TEST REPORT

Prepared For: **American Warrior Inc.**

PO Box 399
Garden City, KS 67846

ATTN: Kevin Timson

O'brate-Finney #3-5

5-23s-32w Finney,KS

Start Date: 2015.01.06 @ 09:29:00

End Date: 2015.01.06 @ 18:39:45

Job Ticket #: 56591 DST #: 3

Trilobite Testing, Inc
1515 Commerce Parkway Hays, KS 67601
ph: 785-625-4778 fax: 785-625-5620

Printed: 2015.01.08 @ 14:46:32



TRILOBITE TESTING, INC

DRILL STEM TEST REPORT

American Warrior Inc.
 PO Box 399
 Garden City, KS 67846
 ATTN: Kevin Timson

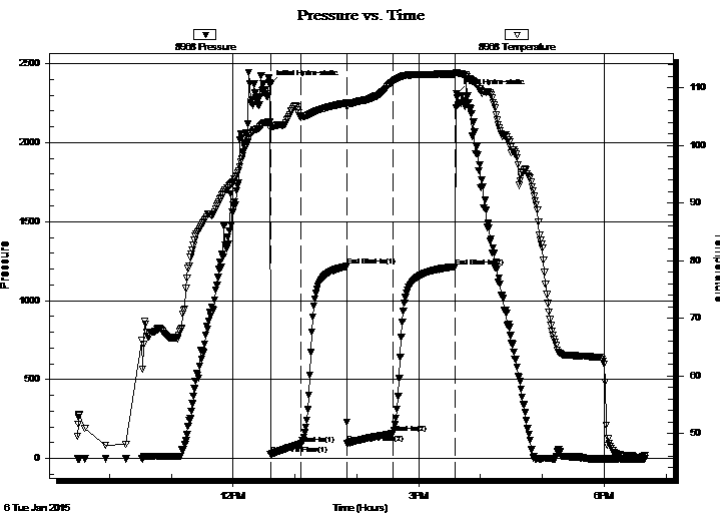
5-23s-32w Finney,KS
O'brate-Finney #3-5
 Job Ticket: 56591 **DST#: 3**
 Test Start: 2015.01.06 @ 09:29:00

GENERAL INFORMATION:

Formation: **Morrow/St. Louis**
 Deviated: No Whipstock: ft (KB)
 Time Tool Opened: 12:36:00
 Time Test Ended: 18:39:45
 Interval: **4674.00 ft (KB) To 4780.00 ft (KB) (TVD)**
 Total Depth: 4780.00 ft (KB) (TVD)
 Hole Diameter: 7.88 inches Hole Condition: Good
 Test Type: Conventional Bottom Hole (Reset)
 Tester: Cornelio Landa III
 Unit No: 44
 Reference Elevations: 2859.00 ft (KB)
 2848.00 ft (CF)
 KB to GR/CF: 11.00 ft

Serial #: 8968 Outside
 Press@RunDepth: 158.80 psig @ 4676.00 ft (KB) Capacity: 8000.00 psig
 Start Date: 2015.01.06 End Date: 2015.01.06 Last Calib.: 2015.01.06
 Start Time: 09:29:05 End Time: 18:39:45 Time On Btm: 2015.01.06 @ 12:35:45
 Time Off Btm: 2015.01.06 @ 15:37:00

TEST COMMENT: IF: B.o.b. in 20 min.-Weak G.T.S. in 25 min.-Too small to gauge
 IS: Bled off in 2 min.-Weak Surface blow back-Died in 10 min.
 FF: B.o.b. in 8 min.-Weak G.T.S in 30 min.-Too small to gauge
 FS: Bled off in 3 min.-Weak Surface blow back-Died in 5 min.



PRESSURE SUMMARY

Time (Min.)	Pressure (psig)	Temp (deg F)	Annotation
0	2369.28	104.03	Initial Hydro-static
1	25.48	102.88	Open To Flow (1)
31	89.26	105.14	Shut-In(1)
75	1217.06	107.37	End Shut-In(1)
75	93.52	107.08	Open To Flow (2)
120	158.80	111.15	Shut-In(2)
180	1215.04	112.39	End Shut-In(2)
182	2310.93	112.63	Final Hydro-static

Recovery

Length (ft)	Description	Volume (bbl)
99.00	O & Gcm 2o 5g 93m	1.39
94.00	O & Gcm 5o 20g 75m	1.32
94.00	O & Gcm 20o 30g 50m	1.32

* Recovery from multiple tests

Gas Rates

	Choke (inches)	Pressure (psig)	Gas Rate (Mcf/d)



**TRILOBITE
TESTING, INC**

DRILL STEM TEST REPORT

TOOL DIAGRAM

American Warrior Inc.

5-23s-32w Finney,KS

PO Box 399
Garden City, KS 67846

O'brate-Finney #3-5

Job Ticket: 56591

DST#: 3

ATTN: Kevin Timson

Test Start: 2015.01.06 @ 09:29:00

Tool Information

Drill Pipe:	Length: 4673.00 ft	Diameter: 3.80 inches	Volume: 65.55 bbl	Tool Weight:	2500.00 lb
Heavy Wt. Pipe:	Length: 0.00 ft	Diameter: 0.00 inches	Volume: 0.00 bbl	Weight set on Packer:	28000.00 lb
Drill Collar:	Length: 0.00 ft	Diameter: 0.00 inches	Volume: 0.00 bbl	Weight to Pull Loose:	13000.00 lb
			<u>Total Volume: 65.55 bbl</u>	Tool Chased	0.00 ft
Drill Pipe Above KB:	26.00 ft			String Weight: Initial	66000.00 lb
Depth to Top Packer:	4674.00 ft			Final	68000.00 lb
Depth to Bottom Packer:	ft				
Interval between Packers:	106.00 ft				
Tool Length:	133.00 ft				
Number of Packers:	2	Diameter:	6.75 inches		
Tool Comments:					

Tool Description

Tool Description	Length (ft)	Serial No.	Position	Depth (ft)	Accum. Lengths
Change Over Sub	1.00			4648.00	
Shut In Tool	5.00			4653.00	
Hydraulic tool	5.00			4658.00	
Jars	5.00			4663.00	
Safety Joint	2.00			4665.00	
Packer	5.00			4670.00	27.00 Bottom Of Top Packer
Packer	4.00			4674.00	
Stubb	1.00			4675.00	
Change Over Sub	1.00			4676.00	
Recorder	0.00	8969	Inside	4676.00	
Recorder	0.00	8968	Outside	4676.00	
Drill Pipe	95.00			4771.00	
Change Over Sub	1.00			4772.00	
Perforations	5.00			4777.00	
Bullnose	3.00			4780.00	106.00 Bottom Packers & Anchor

Total Tool Length: 133.00



**TRILOBITE
TESTING, INC**

DRILL STEM TEST REPORT

FLUID SUMMARY

American Warrior Inc.

5-23s-32w Finney,KS

PO Box 399
Garden City, KS 67846

O'brate-Finney #3-5

Job Ticket: 56591

DST#: 3

ATTN: Kevin Timson

Test Start: 2015.01.06 @ 09:29:00

Mud and Cushion Information

Mud Type: Gel Chem

Cushion Type:

Oil API:

deg API

Mud Weight: 9.00 lb/gal

Cushion Length:

ft

Water Salinity:

ppm

Viscosity: 51.00 sec/qt

Cushion Volume:

bbbl

Water Loss: 8.75 in³

Gas Cushion Type:

Resistivity: 0.00 ohm.m

Gas Cushion Pressure:

psig

Salinity: 3500.00 ppm

Filter Cake: 1.00 inches

Recovery Information

Recovery Table

Length ft	Description	Volume bbbl
99.00	O & Gcm 2o 5g 93m	1.389
94.00	O & Gcm 5o 20g 75m	1.319
94.00	O & Gcm 20o 30g 50m	1.319

Total Length: 287.00 ft Total Volume: 4.027 bbl

Num Fluid Samples: 0

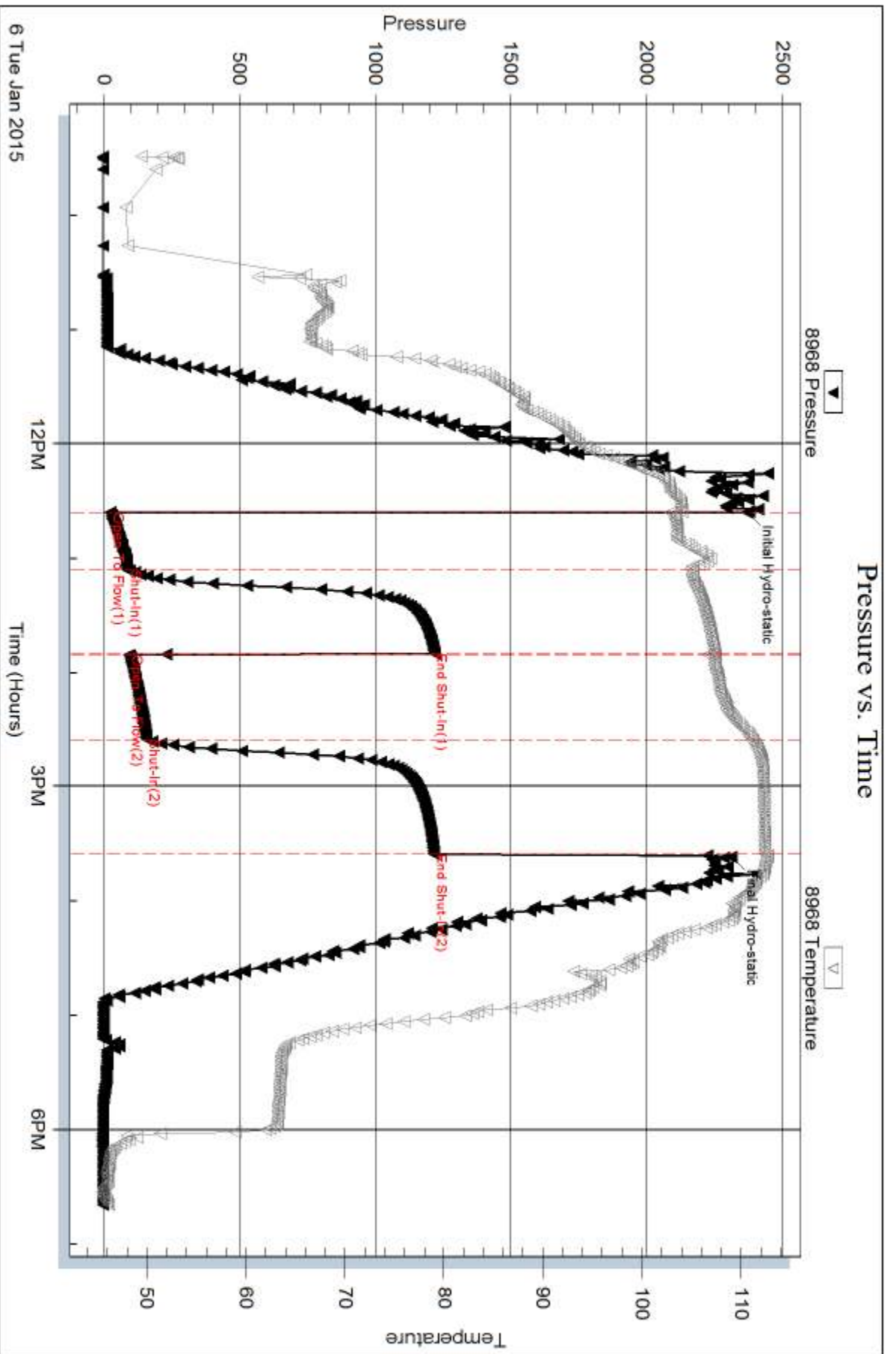
Num Gas Bombs: 0

Serial #:

Laboratory Name:

Laboratory Location:

Recovery Comments:



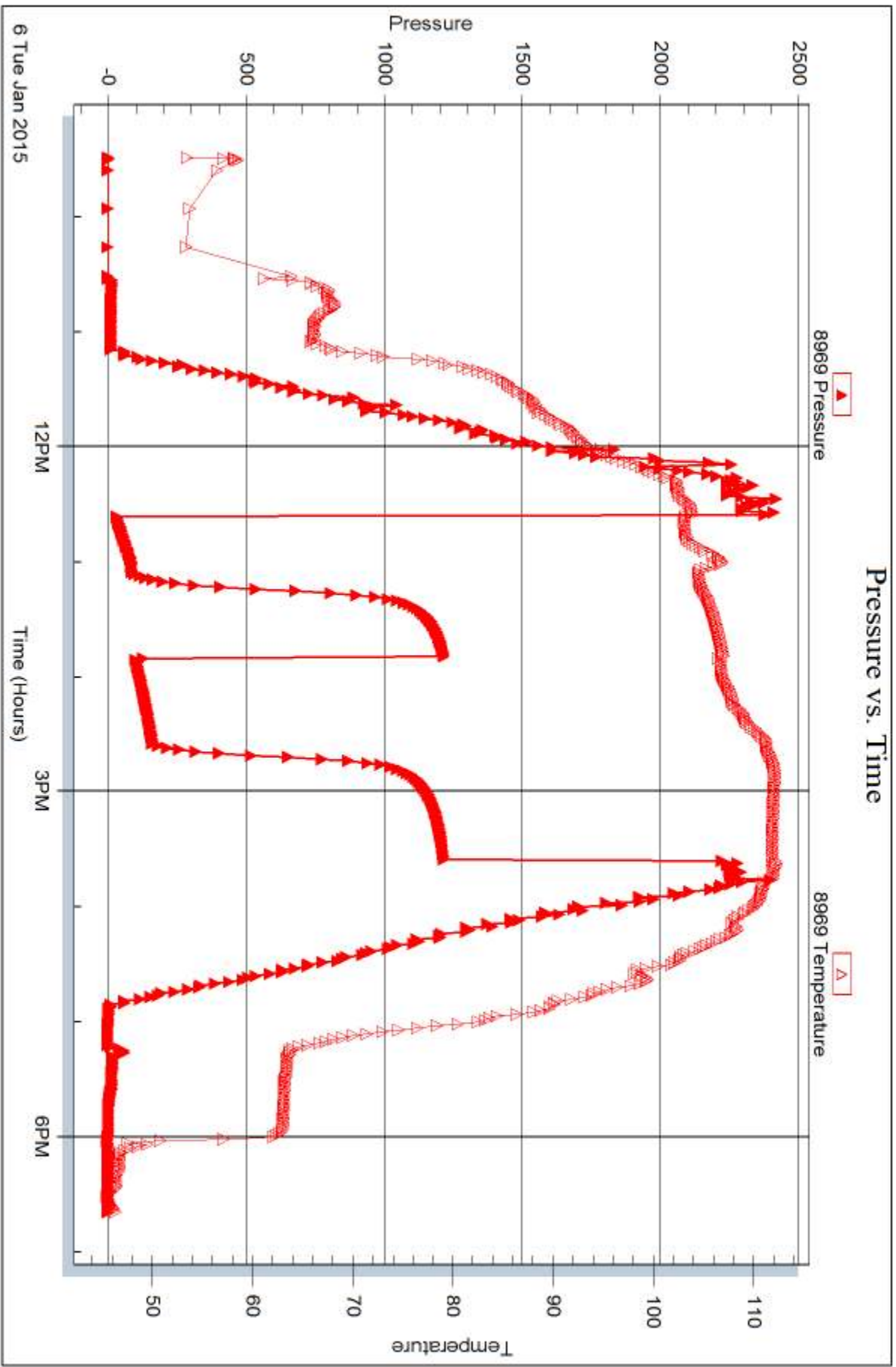
Serial #: 8969

Inside

American Warrior Inc.

Obrate-Finney #3-5

DST Test Number: 3



Trickle Testing, Inc

Ref. No: 56591

Printed: 2015.01.08 @ 14:46:34



DRILL STEM TEST REPORT

Prepared For: **American Warrior Inc.**

PO Box 399
Garden City, KS 67846

ATTN: Kevin Timson

O'brate-Finney #3-5

5-23s-32w Finney,KS

Start Date: 2015.01.07 @ 17:20:15

End Date: 2015.01.08 @ 01:14:00

Job Ticket #: 58564 DST #: 4

Trilobite Testing, Inc
1515 Commerce Parkway Hays, KS 67601
ph: 785-625-4778 fax: 785-625-5620

Printed: 2015.01.08 @ 14:45:32

American Warrior Inc.
5-23s-32w Finney,KS
O'brate-Finney #3-5
DST # 4
Morrow
2015.01.07



**TRILOBITE
TESTING, INC**

DRILL STEM TEST REPORT

American Warrior Inc.
PO Box 399
Garden City, KS 67846
ATTN: Kevin Timson

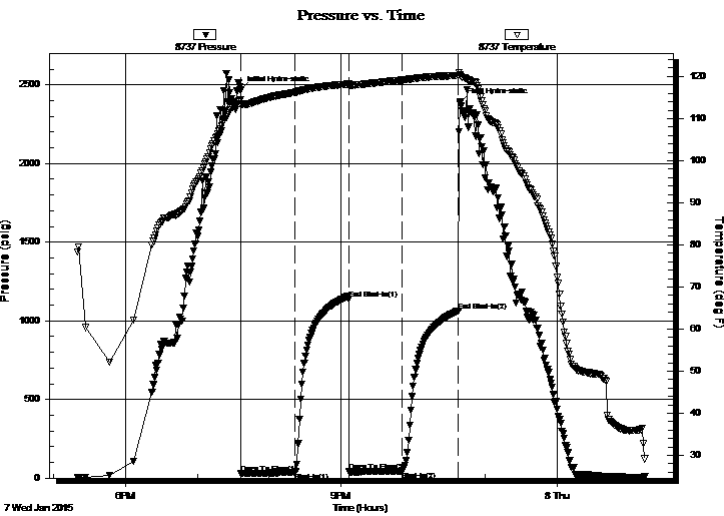
5-23s-32w Finney,KS
O'brate-Finney #3-5
Job Ticket: 58564 **DST#: 4**
Test Start: 2015.01.07 @ 17:20:15

GENERAL INFORMATION:

Formation: **Morrow**
Deviated: No Whipstock: ft (KB)
Time Tool Opened: 19:36:15
Time Test Ended: 01:14:00
Interval: **4790.00 ft (KB) To 4834.00 ft (KB) (TVD)**
Total Depth: 4900.00 ft (KB) (TVD)
Hole Diameter: 7.88 inches Hole Condition: Fair
Test Type: Conventional Bottom Hole (Reset)
Tester: Mike Roberts
Unit No: 65
Reference Elevations: 2859.00 ft (KB)
2848.00 ft (CF)
KB to GR/CF: 11.00 ft

Serial #: 8737 Outside
Press@RunDepth: 45.33 psig @ 4796.00 ft (KB) Capacity: 8000.00 psig
Start Date: 2015.01.07 End Date: 2015.01.08 Last Calib.: 2015.01.08
Start Time: 17:20:15 End Time: 01:14:00 Time On Btm: 2015.01.07 @ 19:36:00
Time Off Btm: 2015.01.07 @ 22:39:30

TEST COMMENT: IF: Built to 3" blow
IS: No return blow
FF: Built to 1 1/2" blow
FS: No return blow



PRESSURE SUMMARY

Time (Min.)	Pressure (psig)	Temp (deg F)	Annotation
0	2466.68	114.44	Initial Hydro-static
1	31.61	113.27	Open To Flow (1)
46	37.01	116.23	Shut-In(1)
91	1139.51	118.17	End Shut-In(1)
91	40.30	117.73	Open To Flow (2)
135	45.33	119.14	Shut-In(2)
182	1064.88	120.23	End Shut-In(2)
184	2390.10	120.22	Final Hydro-static

Recovery

Length (ft)	Description	Volume (bbl)
60.00	mud 100% m	0.84

* Recovery from multiple tests

Gas Rates

Choke (inches)	Pressure (psig)	Gas Rate (Mcf/d)



**TRILOBITE
TESTING, INC**

DRILL STEM TEST REPORT

TOOL DIAGRAM

American Warrior Inc.

5-23s-32w Finney,KS

PO Box 399
Garden City, KS 67846

O'brate-Finney #3-5

Job Ticket: 58564

DST#: 4

ATTN: Kevin Timson

Test Start: 2015.01.07 @ 17:20:15

Tool Information

Drill Pipe:	Length: 4767.00 ft	Diameter: 3.80 inches	Volume: 66.87 bbl	Tool Weight:	2500.00 lb
Heavy Wt. Pipe:	Length: 0.00 ft	Diameter: 0.00 inches	Volume: 0.00 bbl	Weight set on Packer:	25000.00 lb
Drill Collar:	Length: 0.00 ft	Diameter: 0.00 inches	Volume: 0.00 bbl	Weight to Pull Loose:	80000.00 lb
			<u>Total Volume: 66.87 bbl</u>	Tool Chased	0.00 ft
Drill Pipe Above KB:	5.00 ft			String Weight: Initial	60000.00 lb
Depth to Top Packer:	4790.00 ft			Final	61000.00 lb
Depth to Bottom Packer:	ft				
Interval between Packers:	111.00 ft				
Tool Length:	139.00 ft				
Number of Packers:	2	Diameter:	6.75 inches		
Tool Comments:					

Tool Description

Tool Description	Length (ft)	Serial No.	Position	Depth (ft)	Accum. Lengths	
Change Over Sub	1.00			4763.00		
Shut In Tool	5.00			4768.00		
Hydraulic tool	5.00			4773.00		
Jars	5.00			4778.00		
Safety Joint	3.00			4781.00		
Packer	5.00			4786.00	28.00	Bottom Of Top Packer
Packer	4.00			4790.00		
Stubb	1.00			4791.00		
Perforations	4.00			4795.00		
Change Over Sub	1.00			4796.00		
Recorder	0.00	8846	Inside	4796.00		
Recorder	0.00	8737	Outside	4796.00		
Drill Pipe	31.00			4827.00		
Change Over Sub	1.00			4828.00		
Perforations	2.00			4830.00		
Blank Off Sub	1.00			4831.00		
Packer	3.00			4834.00	111.00	Tool Interval
Packer	0.00			4834.00		
Stubb	1.00			4835.00		
Perforations	0.00			4835.00		
Change Over Sub	1.00			4836.00		
Recorder	0.00	8646	Below	4836.00		
Drill Pipe	62.00			4898.00		
Change Over Sub	1.00			4899.00		
Bullnose	2.00			4901.00	1000138.00	Bottom Packers & Anchor

Total Tool Length: 139.00



**TRILOBITE
TESTING, INC**

DRILL STEM TEST REPORT

FLUID SUMMARY

American Warrior Inc.

5-23s-32w Finney,KS

PO Box 399
Garden City, KS 67846

O'brate-Finney #3-5

Job Ticket: 58564

DST#: 4

ATTN: Kevin Timson

Test Start: 2015.01.07 @ 17:20:15

Mud and Cushion Information

Mud Type: Gel Chem

Cushion Type:

Oil API:

0 deg API

Mud Weight: 10.00 lb/gal

Cushion Length:

ft

Water Salinity:

0 ppm

Viscosity: 47.00 sec/qt

Cushion Volume:

bbbl

Water Loss: 8.77 in³

Gas Cushion Type:

Resistivity: 0.00 ohm.m

Gas Cushion Pressure:

psig

Salinity: 5600.00 ppm

Filter Cake: 1.00 inches

Recovery Information

Recovery Table

Length ft	Description	Volume bbl
60.00	mud 100%m	0.842

Total Length: 60.00 ft Total Volume: 0.842 bbl

Num Fluid Samples: 0

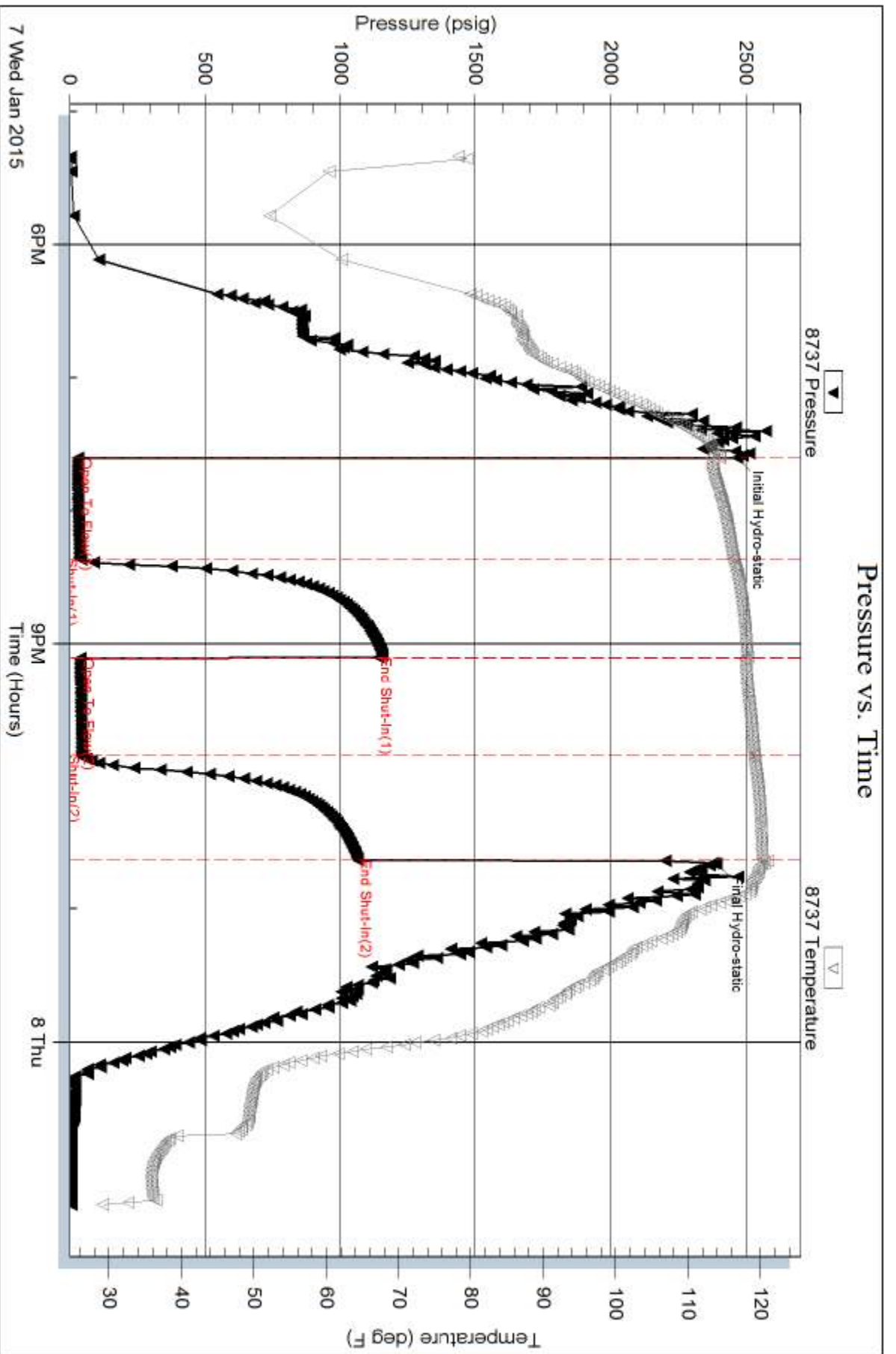
Num Gas Bombs: 0

Serial #:

Laboratory Name:

Laboratory Location:

Recovery Comments:

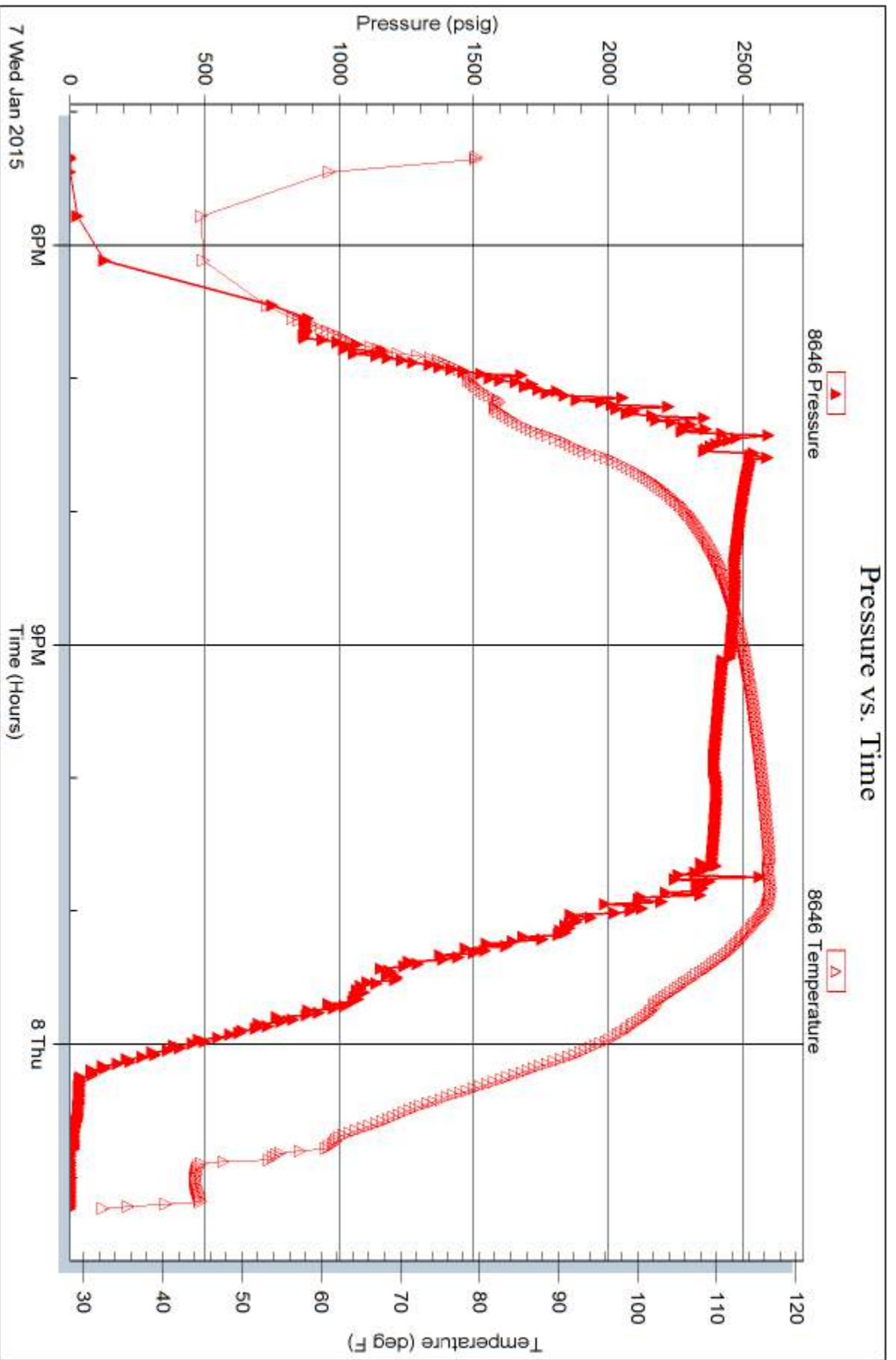


Serial #: 8646

Below (Strat)dejan Warrior Inc.

Obrate-Finney #3-5

DST Test Number: 4



Triobite Testing, Inc

Ref. No: 58564

Printed: 2015.01.08 @ 14:45:33

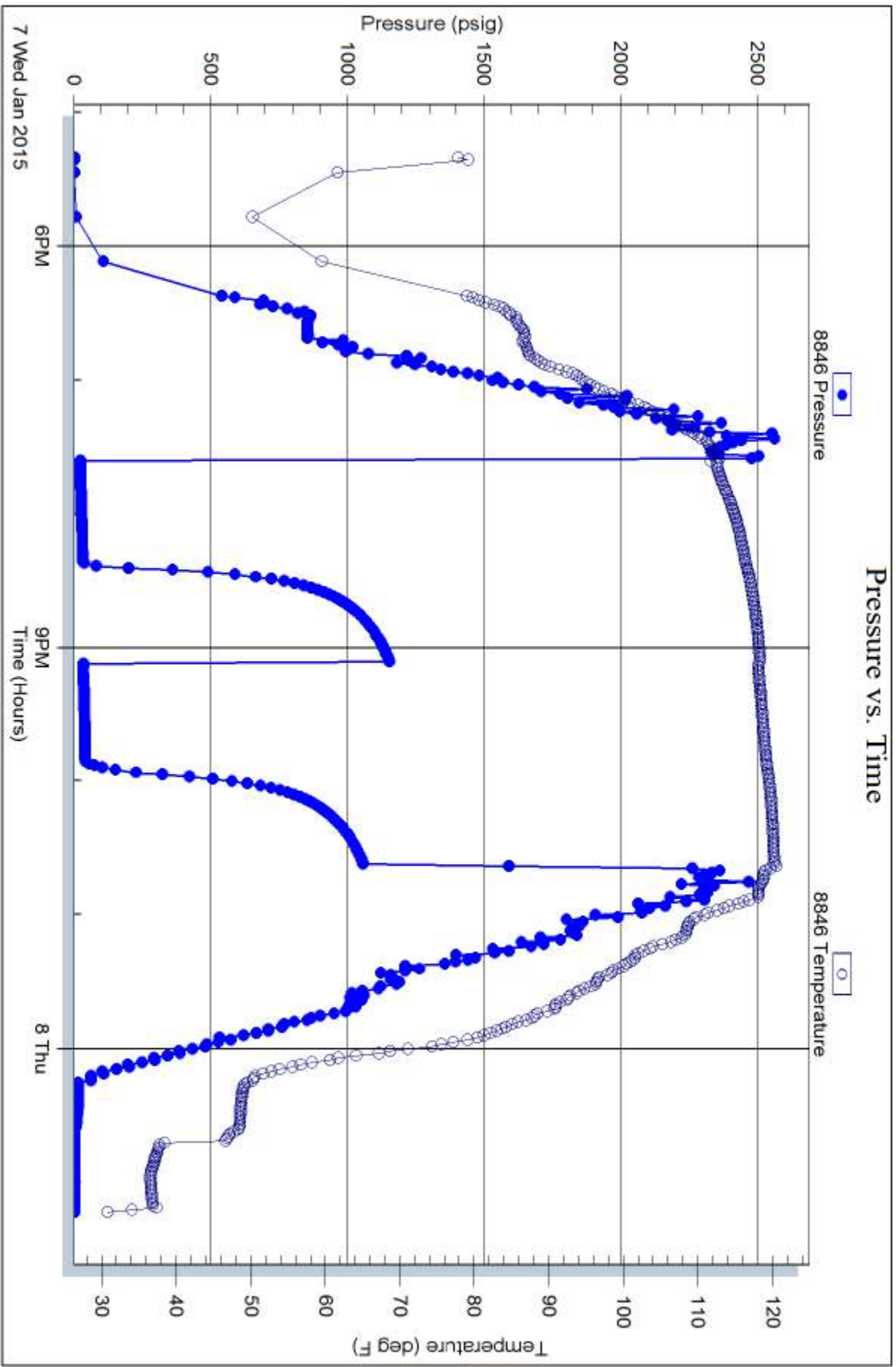
Serial #: 8846

Inside

American Warrior Inc.

Obrate-Finney #3-5

DST Test Number: 4



Triobite Testing, Inc

Ref. No: 58564

Printed: 2015.01.08 @ 14:45:34



TRILOBITE TESTING INC.

1515 Commerce Parkway • Hays, Kansas 67601

Test Ticket

NO. **56589**

4/10

Well Name & No. O'Brate Finney #3-5 Test No. 1 Date 1-4-14
 Company American Warrior Inc. Elevation 2859 KB 2848 GL
 Address 3118 Cummings Rd - Garden City, KS 67846
 Co. Rep / Geo. Kevin Timson Rig Duke #10
 Location: Sec. 5 Twp. 23-S Rge. 32-W Co. Finney State Ks

Interval Tested 4676-4727 Zone Tested ~~23-S~~ Morrow
 Anchor Length 51' Drill Pipe Run 4673 Mud Wt. 9.5
 Top Packer Depth 4672 Drill Collars Run 0 Vis 49
 Bottom Packer Depth 4676 Wt. Pipe Run 0 WL 8.0
 Total Depth 4727 Chlorides 2400 ppm System LCM #15

Blow Description IF: Weak surface blow - Built to 1/2 in Blow
IST: No Return
FF: No Blow
FSI: No Return

Rec	Feet of	%gas	%oil	%water	%mud
Rec	Feet of	%gas	%oil	%water	%mud
Rec <u>5</u>	Feet of <u>mud</u>	%gas	%oil	%water <u>100</u>	%mud
Rec	Feet of	%gas	%oil	%water	%mud
Rec	Feet of	%gas	%oil	%water	%mud

Rec Total 5 BHT 113 Gravity — API RW — @ — °F Chlorides — ppm

(A) Initial Hydrostatic <u>2370</u>	<input checked="" type="checkbox"/> Test <u>1150</u>	T-On Location <u>19:45</u>
(B) First Initial Flow <u>17</u>	<input checked="" type="checkbox"/> Jars <u>250</u>	T-Started <u>20:09</u>
(C) First Final Flow <u>19</u>	<input checked="" type="checkbox"/> Safety Joint <u>75</u>	T-Open <u>03:10</u>
(D) Initial Shut-In <u>32</u>	<input checked="" type="checkbox"/> Circ Sub <u>N/C 1.75 140</u>	T-Pulled <u>05:10</u>
(E) Second Initial Flow <u>19</u>	<input checked="" type="checkbox"/> Hourly Standby <u>2hrs over allotted time</u>	T-Out <u>07:45</u>
(F) Second Final Flow <u>20</u>	<input checked="" type="checkbox"/> Mileage <u>88 RIT</u>	Comments _____
(G) Final Shut-In <u>26</u>	<input type="checkbox"/> Sampler <u>62</u>	
(H) Final Hydrostatic <u>2340</u>	<input type="checkbox"/> Straddle _____	<input type="checkbox"/> Ruined Shale Packer _____
	<input type="checkbox"/> Shale Packer _____	<input type="checkbox"/> Ruined Packer _____
	<input type="checkbox"/> Extra Packer _____	<input type="checkbox"/> Extra Copies _____
	<input type="checkbox"/> Extra Recorder _____	Sub Total <u>0</u>
	<input type="checkbox"/> Day Standby _____	Total <u>1677</u>
	<input type="checkbox"/> Accessibility _____	MP/DST Disc't _____
	Sub Total <u>1677</u>	

Initial Open 30
 Initial Shut-In 30
 Final Flow 1150+250+75+62+
 Final Shut-In 30

Approved By _____ Our Representative Kevin Timson

Trilobite Testing Inc. shall not be liable for damaged of any kind of the property or personnel of the one for whom a test is made, or for any loss suffered or sustained, directly or indirectly, through the use of its equipment, or its statements or opinion concerning the results of any test, tools lost or damaged in the hole shall be paid for at cost by the party for whom the test is made.



TRILOBITE TESTING INC.

1515 Commerce Parkway • Hays, Kansas 67601

Test Ticket

NO. 56590

4/10

Well Name & No. O'Brate - Finney #3-5 Test No. 2 Date 1-5-14
 Company American Warrior Inc. Elevation 2859 KB 2848 GL
 Address 3118 Cummings Rd. - Garden City, KS 67846
 Co. Rep / Geo. Kevin Timson Rig Duke #10
 Location: Sec. 5 Twp. 23-S Rge. 32-W Co. Finney State KS

Interval Tested 4677-4756 Zone Tested Morrow
 Anchor Length 79' Drill Pipe Run 4673' Mud Wt. 9.4
 Top Packer Depth 4673 Drill Collars Run Ø Vis 51
 Bottom Packer Depth 4677 Wt. Pipe Run Ø WL 8.8
 Total Depth 4756 Chlorides 3500 ppm System LCM #1½
 Blow Description IF: Weak surface blow - Built to 2½ in of Blow
ISI: No Return
FF: Weak surface ^{blow} throughout open.
FSI: No Return

Rec	Feet of	%gas	%oil	%water	%mud
Rec	Feet of	%gas	%oil	%water	%mud
Rec <u>64</u>	Feet of <u>Mud</u>	%gas	%oil	%water <u>106</u>	%mud
Rec	Feet of	%gas	%oil	%water	%mud
Rec	Feet of	%gas	%oil	%water	%mud

Rec Total 64 BHT 109 Gravity _____ API RW _____ @ _____ ° F Chlorides _____ ppm

(A) Initial Hydrostatic <u>2367</u>	<input checked="" type="checkbox"/> Test <u>1150</u>	T-On Location <u>17:30</u>
(B) First Initial Flow <u>19</u>	<input checked="" type="checkbox"/> Jars <u>250</u>	T-Started <u>17:32</u>
(C) First Final Flow <u>35</u>	<input checked="" type="checkbox"/> Safety Joint <u>75</u>	T-Open <u>20:33</u>
(D) Initial Shut-In <u>1081</u>	<input checked="" type="checkbox"/> Circ Sub <u>N/C</u>	T-Pulled <u>23:33</u>
(E) Second Initial Flow <u>38</u>	<input type="checkbox"/> Hourly Standby _____	T-Out <u>01:54</u>
(F) Second Final Flow <u>51</u>	<input checked="" type="checkbox"/> Mileage <u>62</u>	Comments _____
(G) Final Shut-In <u>1015</u>	<input type="checkbox"/> Sampler _____	<input type="checkbox"/> Ruined Shale Packer _____
(H) Final Hydrostatic <u>2341</u>	<input type="checkbox"/> Straddle _____	<input type="checkbox"/> Ruined Packer _____
Initial Open <u>45</u>	<input type="checkbox"/> Shale Packer _____	<input type="checkbox"/> Extra Copies _____
Initial Shut-In <u>45</u>	<input type="checkbox"/> Extra Packer _____	Sub Total <u>0</u>
Final Flow <u>45</u>	<input type="checkbox"/> Extra Recorder _____	Total <u>1537</u>
Final Shut-In <u>45</u>	<input type="checkbox"/> Day Standby _____	MP/DST Disc't _____
	<input type="checkbox"/> Accessibility _____	
	Sub Total <u>1537</u>	

Approved By _____ Our Representative Albert C. [Signature]

TriLOBite Testing Inc. shall not be liable for damaged of any kind of the property or personnel of the one for whom a test is made, or for any loss suffered or sustained, directly or indirectly, through the use of its equipment, or its statements or opinion concerning the results of any test, tools lost or damaged in the hole shall be paid for at cost by the party for whom the test is made.



TRILOBITE TESTING INC.

1515 Commerce Parkway • Hays, Kansas 67601

Test Ticket

NO. **56591**

4/10

Well Name & No. O'Brade-Ferney #3-5 Test No. 3 Date 1-6-2015
 Company AWI Elevation 2859 KB 2848 GL
 Address 308 Cummings Rd. - Garden City, KS 67846
 Co. Rep / Geo. Kevin Tomson Rig Duk #10
 Location: Sec. 5 Twp. 23-S Rge. 32-W Co. Finney State KS

Interval Tested 4674-4780 Zone Tested Morrow / St Louis
 Anchor Length 106 Drill Pipe Run 4673 Mud Wt. 9.4
 Top Packer Depth 4670 Drill Collars Run 8 Vis 51
 Bottom Packer Depth 4674 Wt. Pipe Run 8 WL 8.8
 Total Depth 4780 Chlorides 3500 ppm System LCM 1 1/2

Blow Description IF Bob in 20 min - Weak G.T.S. in 25 min - Too small to gauge
ISI: Bled off in 2 min - Weak surface blowback - Died in 10 min.
FF: B.o.b. in 8 min - Weak G.T.S. in 30 min. - Too small to gauge
FST Bled off in 3 min - Weak surface blowback - Died in 5 min.

Rec	Feet of	%gas	%oil	%water	%mud	
99	0 + Gcm	5%	2%		93%	
94	0 + Gcm	20%	5%		75%	
94	0 + Gcm	30%	20%		50%	
Rec	Feet of	G.T.S. (weak)	%gas	%oil	%water	%mud
Rec	Feet of		%gas	%oil	%water	%mud

Rec Total 287 BHT 113 Gravity _____ API RW _____ @ _____ °F Chlorides _____ ppm

(A) Initial Hydrostatic 2369 Test 1150 T-On Location 9:25
 (B) First Initial Flow 25 Jars 250 T-Started 9:29
 (C) First Final Flow 89 Safety Joint 75 T-Open 12:36
 (D) Initial Shut-In 1217 Circ Sub _____ T-Pulled 15:36
 (E) Second Initial Flow 94 Hourly Standby _____ T-Out 18:40
 (F) Second Final Flow 159 Mileage 68 Comments Stayed in hotel
 (G) Final Shut-In 1215 Sampler _____ 1 night
 (H) Final Hydrostatic 2311 Straddle _____ Ruined Shale Packer _____
 Shale Packer _____ Ruined Packer _____
 Extra Packer _____ Extra Copies _____
 Initial Open 30 Extra Recorder _____ Sub Total 0
 Initial Shut-In 45 Day Standby _____ Total 1537
 Final Flow 45 Accessibility _____ MP/DST Disc't _____
 Final Shut-In 60 Sub Total 1537

Approved By _____ Our Representative Colbert CLT

TriLOBITE TESTING Inc. shall not be liable for damaged of any kind of the property or personnel of the one for whom a test is made, or for any loss suffered or sustained, directly or indirectly, through the use of its equipment, or its statements or opinion concerning the results of any test, tools lost or damaged in the hole shall be paid for at cost by the party for whom the test is made.



TRILOBITE TESTING INC.

1515 Commerce Parkway • Hays, Kansas 67601

Test Ticket

NO. 58564

Well Name & No. Brake ~~222~~ Finney #3-5 Test No. 4 Date 1-7-19
 Company American Warrior Inc Elevation 2859 KB 2846 GL
 Address P.O. Box 399 Garden City KS 67846
 Co. Rep / Geo. Kevin Timson Rig Duke 10
 Location: Sec. 5 Twp. 23S Rge. 32W Co. Finney State KS

Interval Tested 4790-4834 TD 4900 Zone Tested Morrow
 Anchor Length 44' Tailpipe lgle Drill Pipe Run 4767 Mud Wt. 9.5
 Top Packer Depth 4785 Drill Collars Run Ø Vis 47
 Bottom Packer Depth 4790 Wt. Pipe Run Ø WL 8.8
 Total Depth 4900 Chlorides 5600 ppm System LCM 2
 Blow Description IF: Built to 3" Blow
IS: NO Return Blow
FF: Built to 1 1/2" Blow
FS: NO Return Blow

Rec	Feet of	%gas	%oil	%water	%mud
<u>60</u>	<u>mud</u>			<u>100</u>	
Rec	Feet of	%gas	%oil	%water	%mud
Rec	Feet of	%gas	%oil	%water	%mud
Rec	Feet of	%gas	%oil	%water	%mud

Rec Total 60 BHT _____ Gravity _____ API RW _____ @ _____ ° F Chlorides _____ ppm

(A) Initial Hydrostatic <u>2464</u>	<input checked="" type="checkbox"/> Test <u>1150</u> <u>1250.00</u>	T-On Location <u>15:13</u>
(B) First Initial Flow <u>31</u>	<input checked="" type="checkbox"/> Jars <u>250.00</u>	T-Started <u>17:20</u>
(C) First Final Flow <u>37</u>	<input checked="" type="checkbox"/> Safety Joint <u>75.00</u>	T-Open <u>19:35</u>
(D) Initial Shut-In <u>1139</u>	<input checked="" type="checkbox"/> Circ Sub <u>NC</u>	T-Pulled <u>22:35</u>
(E) Second Initial Flow <u>40</u>	<input type="checkbox"/> Hourly Standby _____	T-Out <u>01:14</u>
(F) Second Final Flow <u>45</u>	<input checked="" type="checkbox"/> Mileage <u>62 RT \$96.10/-</u>	Comments _____
(G) Final Shut-In <u>1064</u>	<input type="checkbox"/> Sampler <u>62</u>	
(H) Final Hydrostatic <u>2390</u>	<input checked="" type="checkbox"/> Straddle <u>\$600.00</u>	<input type="checkbox"/> Ruined Shale Packer _____
Initial Open <u>45</u>	<input type="checkbox"/> Shale Packer _____	<input type="checkbox"/> Ruined Packer _____
Initial Shut-In <u>45</u>	<input type="checkbox"/> Extra Packer _____	<input type="checkbox"/> Extra Copies _____
Final Flow <u>45</u>	<input type="checkbox"/> Extra Recorder _____	Sub Total <u>0</u>
Final Shut-In <u>45</u>	<input type="checkbox"/> Day Standby _____	Total <u>2137.00</u>
	<input type="checkbox"/> Accessibility <u>2137.00</u>	MP/DST Disc't _____
	Sub Total <u>\$2271.10/-</u>	

Approved By _____ Our Representative Mike Roberts

Trilobite Testing Inc. shall not be liable for damaged of any kind of the property or personnel of the one for whom a test is made, or for any loss suffered or sustained, directly or indirectly, through the use of its equipment, or its statements or opinion concerning the results of any test, tools lost or damaged in the hole shall be paid for at cost by the party for whom the test is made.