



**TRILOBITE
TESTING, INC**

DRILL STEM TEST REPORT

Blake Exploration

4-14s-32w Logan, KS

PO Box 150
Bogue KS 67625

D Scheets #1

Job Ticket: 58629

DST#: 4

ATTN: Mike Davignon

Test Start: 2014.11.12 @ 19:20:00

GENERAL INFORMATION:

Formation: **Jonhson Zone**

Deviated: No Whipstock: ft (KB)

Time Tool Opened: 22:02:00

Time Test Ended: 04:02:00

Test Type: Conventional Bottom Hole (Reset)

Tester: Justin Harris

Unit No: 58

Interval: **4425.00 ft (KB) To 4450.00 ft (KB) (TVD)**

Total Depth: 4470.00 ft (KB) (TVD)

Hole Diameter: 7.88 inches Hole Condition: Poor

Reference Elevations: 2865.00 ft (KB)

2856.00 ft (CF)

KB to GR/CF: 9.00 ft

Serial #: 6625

Inside

Press@RunDepth: 24.49 psig @ 4426.00 ft (KB)

Start Date: 2014.11.12

End Date:

2014.11.13

Start Time: 19:20:01

End Time:

04:02:00

Capacity: 8000.00 psig

Last Calib.: 2014.11.13

Time On Btm: 2014.11.12 @ 22:01:30

Time Off Btm: 2014.11.13 @ 00:34:30

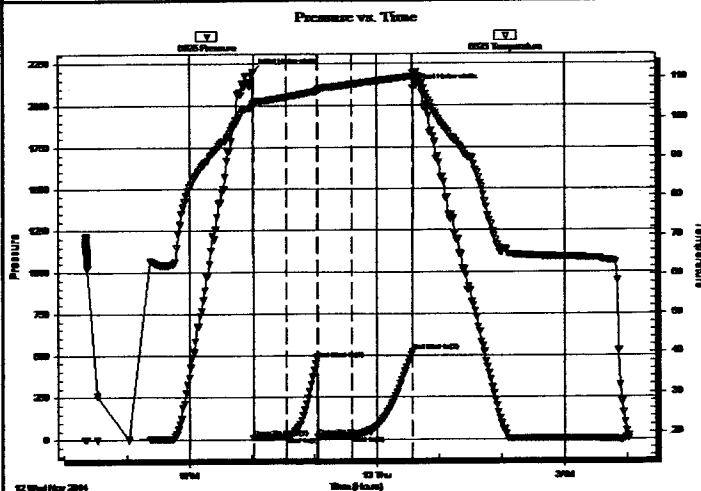
TEST COMMENT: 30: Weak surface blow to 1"

30: No Return.

30: No Blow.

60: No Return.

PRESSURE SUMMARY



Time (Min.)	Pressure (psig)	Temp (deg F)	Annotation
0	2201.11	103.39	Initial Hydro-static
1	13.84	103.16	Open To Flow (1)
32	19.82	105.18	Shut-In(1)
61	477.73	106.63	End Shut-In(1)
62	19.96	107.14	Open To Flow (2)
94	24.49	108.33	Shut-In(2)
153	521.81	110.40	End Shut-In(2)
153	2104.19	111.28	Final Hydro-static

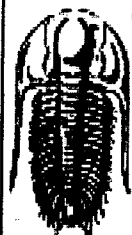
Recovery

Length (ft)	Description	Volume (bbl)
10.00	mud with oil spots	0.05

* Recovery from multiple tests

Gas Rates

Choke (inches)	Pressure (psig)	Gas Rate (Mcf/d)



**TRILOBITE
TESTING, INC**

DRILL STEM TEST REPORT

Blake Exploration

4-14s-32w Logan, KS

PO Box 150
Bogue KS 67625

D Scheets #1

Job Ticket: 58628

DST#: 3

ATTN: Mike Davignon

Test Start: 2014.11.11 @ 21:20:00

GENERAL INFORMATION:

Formation: **Myric Station**

Deviated: No Whipstock: ft (KB)

Time Tool Opened: 23:52:00

Time Test Ended: 04:58:00

Test Type: Conventional Bottom Hole (Reset)

Tester: Justin Harris

Unit No: 58

Interval: 4290.00 ft (KB) To 4380.00 ft (KB) (TVD)

Total Depth: 4380.00 ft (KB) (TVD)

Hole Diameter: 7.88 inches Hole Condition: Poor

Reference Elevations: 2865.00 ft (KB)

2856.00 ft (CF)

KB to GR/CF: 9.00 ft

Serial #: 6625

Inside

Press@RunDepth: 47.41 psig @ 4291.00 ft (KB)

Start Date: 2014.11.11

End Date:

2014.11.12

Capacity:

8000.00 psig

Last Calib.:

2014.11.12

Start Time: 21:20:01

End Time:

04:58:00

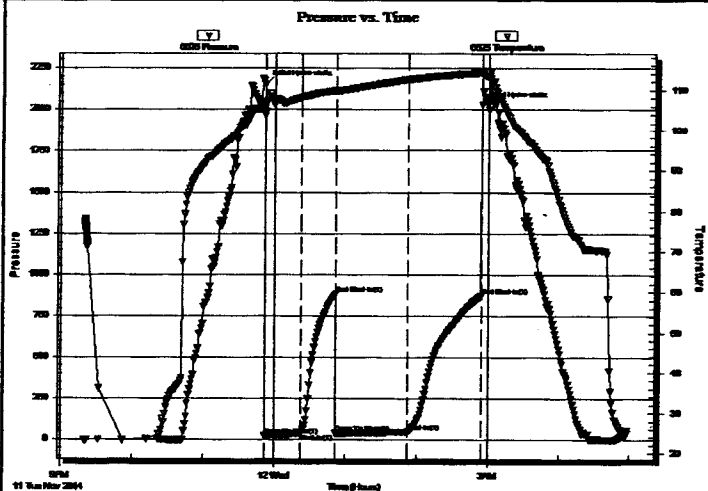
Time On Btm:

2014.11.11 @ 23:51:30

Time Off Btm:

2014.11.12 @ 02:54:30

TEST COMMENT: 30: Weak surface blow build to 3".
30: No Return.
60: Weak surface Blow build to 1".
60: No Return.



PRESSURE SUMMARY

Time (Min.)	Pressure (psig)	Temp (deg F)	Annotation
0	2150.45	104.71	Initial Hydro-static
1	22.34	103.75	Open To Flow (1)
31	35.75	108.10	Shut-In(1)
60	885.54	109.81	End Shut-In(1)
61	38.40	109.83	Open To Flow (2)
121	47.41	112.53	Shut-In(2)
183	873.48	114.13	End Shut-In(2)
183	2027.27	114.44	Final Hydro-static

Recovery

Length (ft)	Description	Volume (bbl)
78.00	gocm 5g 5o 90m	0.84

* Recovery from multiple tests

Gas Rates

	Choke (inches)	Pressure (psig)	Gas Rate (Mcf/d)



**TRILOBITE
TESTING, INC**

DRILL STEM TEST REPORT

Blake Exploration

4-14s-32w Logan,KS

PO Box 150
Bogue KS 67625

D Scheets #1

Job Ticket: 58627

DST#: 2

ATTN: Mike Davignon

Test Start: 2014.11.09 @ 18:26:00

GENERAL INFORMATION:

Formation: LKC "F"

Deviated: No Whipstock: ft (KB)

Time Tool Opened: 21:18:00

Time Test Ended: 02:46:00

Test Type: Conventional Bottom Hole (Reset)

Tester: Justin Harris

Unit No: 58

Interval: 3940.00 ft (KB) To 3970.00 ft (KB) (TVD)

Total Depth: 3970.00 ft (KB) (TVD)

Hole Diameter: 7.88 inches Hole Condition: Poor

Reference Elevations: 2865.00 ft (KB)

2856.00 ft (CF)

KB to GR/CF: 9.00 ft

Serial #: 6625

Inside

Press@RunDepth: 323.38 psig @ 3941.00 ft (KB)

Capacity: 8000.00 psig

Start Date: 2014.11.09

End Date: 2014.11.10

Last Calib.: 2014.11.10

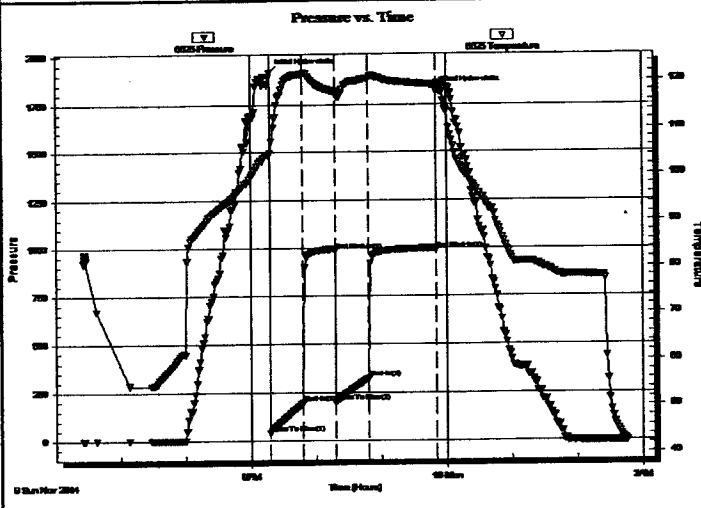
Start Time: 18:26:01

End Time: 02:46:00

Time On Btm: 2014.11.09 @ 21:17:30

Time Off Btm: 2014.11.09 @ 23:50:30

TEST COMMENT: 30: B.O.B in 3 1/2 mins.
30: Weak surface blow build to 2".
30: B.O.B in 3 1/2 min.
60: Weak surface blow.



PRESSURE SUMMARY

Time (Min.)	Pressure (psig)	Temp (deg F)	Annotation
0	1914.09	104.24	Initial Hydro-static
1	37.94	104.37	Open To Flow (1)
31	193.62	121.47	Shut-In(1)
60	985.20	117.69	End Shut-In(1)
61	199.58	117.33	Open To Flow (2)
91	323.38	120.46	Shut-In(2)
153	990.11	119.11	End Shut-In(2)
153	1818.26	119.32	Final Hydro-static

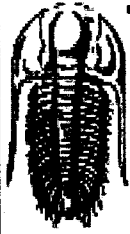
Recovery

Length (ft)	Description	Volume (bbl)
126.00	gmco 20g 20m 60o	1.51
441.00	gmco 25g 5m 70o	6.19
131.00	clean oil 5g 95o	1.84

* Recovery from multiple tests

Gas Rates

	Choke (inches)	Pressure (psig)	Gas Rate (Mcf/d)



**TRILOBITE
TESTING, INC**

DRILL STEM TEST REPORT

Blake Exploration

4-14s-32w Logan, KS

PO Box 150
Bogue KS 67625

D Scheets #1

Job Ticket: 58626

DST#: 1

ATTN: Mike Davignon

Test Start: 2014.11.09 @ 01:29:20

GENERAL INFORMATION:

Formation: Lansing "C"

Deviated: No Whipstock: ft (KB)

Time Tool Opened: 03:47:50

Time Test Ended: 09:13:20

Test Type: Conventional Bottom Hole (Initial)

Tester: Justin Harris

Unit No: 58

Interval: 3890.00 ft (KB) To 3915.00 ft (KB) (TVD)

Total Depth: 3915.00 ft (KB) (TVD)

Hole Diameter: 7.88 inches Hole Condition: Poor

Reference Elevations: 2865.00 ft (KB)

2856.00 ft (CF)

KB to GR/CF: 9.00 ft

Serial #: 8319

Outside

Press@RunDepth: 904.89 psig @ 3891.00 ft (KB)

Start Date: 2014.11.09

End Date:

2014.11.09

Start Time: 01:29:21

End Time:

09:13:20

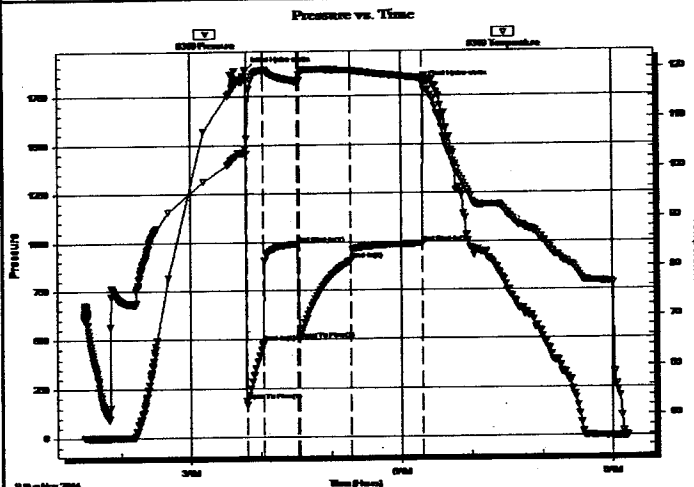
Capacity: 8000.00 psig

Last Calib.: 2014.11.09

Time On Btrn: 2014.11.09 @ 03:47:20

Time Off Btrn: 2014.11.09 @ 06:18:50

TEST COMMENT: 15: B.O.B. in 1 min.
30: No Return.
45: B.O.B in 1 mins 30 sec.
60: Weak surface blow.



PRESSURE SUMMARY

Time (Min.)	Pressure (psig)	Temp (deg F)	Annotation
0	1879.18	104.00	Initial Hydro-static
1	189.15	102.94	Open To Flow (1)
15	482.37	119.77	Shut-In(1)
45	990.77	117.27	End Shut-In(1)
46	495.88	117.60	Open To Flow (2)
90	904.89	119.61	Shut-In(2)
151	988.46	117.94	End Shut-In(2)
152	1801.76	117.44	Final Hydro-static

Recovery

Length (ft)	Description	Volume (bbl)
189.00	gmcw 1g 20m 79w	2.40
31.00	clean oil	0.43
315.00	gw co 5g 5w 90o	4.42
630.00	gocw 10g 10o 80w	8.84
819.00	gocw 1g 5o 94w	11.49

Gas Rates

Choke (Inches)	Pressure (psig)	Gas Rate (Mcf/d)