

**TRILOBITE
TESTING, INC.**

DRILL STEM TEST REPORT

Blake Exploration, LLC
201 S Main, PO Box 150
Bogue KS 67625
ATTN: Mike Davignon

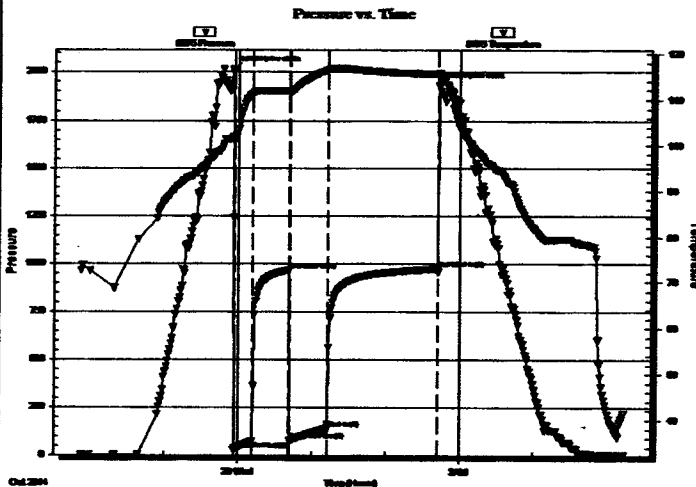
8-14s-32w Logan,KS
Kroneberger #1
Job Ticket: 57293 DST#: 5
Test Start: 2014.10.28 @ 21:52:00

GENERAL INFORMATION:

Formation: **KC 'K'**
Deviated: No Whipstock: ft (KB)
Time Tool Opened: 23:56:30
Time Test Ended: 05:14:00
Interval: **4070.00 ft (KB) To 4100.00 ft (KB) (TVD)**
Total Depth: 4100.00 ft (KB) (TVD)
Hole Diameter: 7.88 inches Hole Condition: Poor
Test Type: Conventional Bottom Hole (Res.)
Tester: Jace McKinney
Unit No: 75
Reference Elevations: 2839.00 ft (KE)
2829.00 ft (CF)
KB to GR/CF: 10.00 ft

Serial #: 8675 Inside
Press@RunDepth: 140.87 psig @ 4071.00 ft (KB) Capacity: 8000.00 psig
Start Date: 2014.10.28 End Date: 2014.10.29 Last Calib.: 2014.10.29
Start Time: 21:52:15 End Time: 05:14:00 Time On Btm: 2014.10.28 @ 23:56:00
Time Off Btm: 2014.10.29 @ 02:43:00

TEST COMMENT: B.O.B. in 12 1/2 min.
Bled off for 5 min. Built to 1/4" return blow
B.O.B. in 13 min.
Bled off for 5 min. Built to 2" return blow, died to surface blow in 90 min.



PRESSURE SUMMARY

Time (Min.)	Pressure (psig)	Temp (deg F)	Annotation
0	2010.16	101.96	Initial Hydro-static
1	30.14	101.27	Open To Flow (1)
16	73.48	111.29	Shut-In(1)
46	964.07	111.83	End Shut-In(1)
47	79.46	111.50	Open To Flow (2)
76	140.87	116.50	Shut-In(2)
166	970.92	115.62	End Shut-In(2)
167	1929.50	115.74	Final Hydro-static

Recovery

Length (ft)	Description	Volume (bbl)
0.00	310 Feet Gas In Pipe	0.00
114.00	gco 5%G 95%O	1.60
62.00	gcom 5%G 5%O 90%M	0.87
124.00	gcomw 5%G 5%O 30%M 60%W	1.74

* Recovery from multiple tests

Gas Rates

	Choke (inches)	Pressure (psig)	Gas Rate (Mscf/d)



**TRILOBITE
TESTING, INC.**

DRILL STEM TEST REPORT

Blake Exploration, LLC
201 S Main, PO Box 150
Bogue KS 67625
ATTN: Mike Davignon

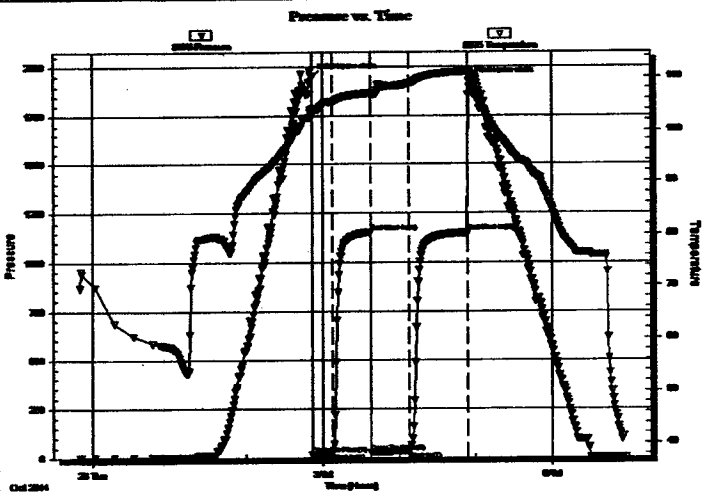
8-14s-32w Logan, KS
Kroneberger #1
Job Ticket: 57292 DST#: 4
Test Start: 2014.10.27 @ 23:50:00

GENERAL INFORMATION:

Formation: **KC 'H'**
Deviated: **No Whipstock** ft (KB)
Time Tool Opened: **02:52:00**
Time Test Ended: **06:56:00**
Interval: **3985.00 ft (KB) To 4019.00 ft (KB) (TVD)**
Total Depth: **4019.00 ft (KB) (TVD)**
Hole Diameter: **7.88 inches** Hole Condition: **Poor**
Test Type: **Conventional Bottom Hole (Reset)**
Tester: **Jace McKinney**
Unit No: **75**
Reference Elevations: **2839.00 ft (KB)**
2829.00 ft (CF)
KB to GR/CF: **10.00 ft**

Serial #: **8675** Inside
Press@RunDepth: **33.32 psig @ 3986.00 ft (KB)** Capacity: **8000.00 psig**
Start Date: **2014.10.27** End Date: **2014.10.28** Last Calib.: **2014.10.28**
Start Time: **23:50:15** End Time: **06:56:00** Time On Btrr: **2014.10.28 @ 02:51:45**
Time Off Btrr: **2014.10.28 @ 04:54:45**

TEST COMMENT: Built to 1" in 10 min, and stayed at 1" blow
No return blow
Built to 3/4" blow
No return blow



PRESSURE SUMMARY

Time (Min.)	Pressure (psig)	Temp (deg F)	Annotation
0	1947.32	103.85	Initial Hydro-static
1	17.87	102.63	Open To Flow (1)
16	25.12	105.43	Shut-In(1)
46	1155.42	107.08	End Shut-In(1)
47	28.17	106.45	Open To Flow (2)
76	33.32	108.86	Shut-In(2)
122	1152.28	111.06	End Shut-In(2)
123	1924.67	111.07	Final Hydro-static

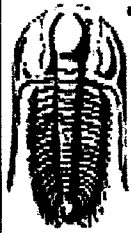
Recovery

Length (ft)	Description	Volume (bbl)
40.00	ocm 5%O 95%M	0.56

* Recovery from multiple tests

Gas Rates

Choke (inches)	Pressure (psig)	Gas Rate (Mcf/d)



**TRILOBITE
TESTING, INC.**

DRILL STEM TEST REPORT

Blake Exploration, LLC
201 S Main, PO Box 150
Bogue KS 67625
ATTN: Mike Davignon

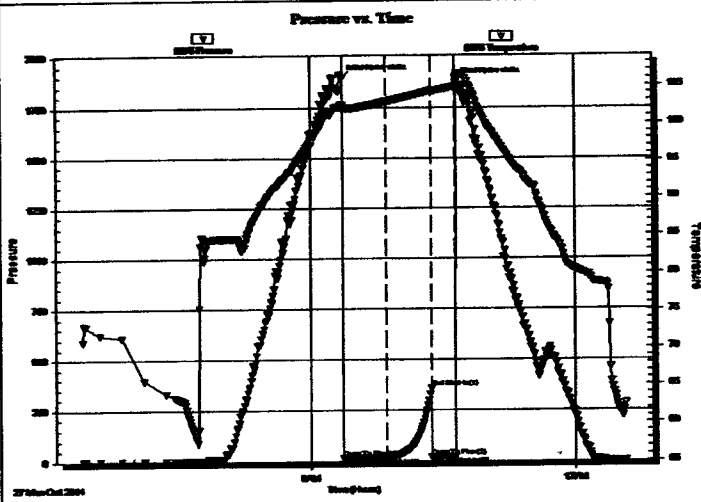
8-14s-32w Logan,KS
Kroneberger #1
Job Ticket: 57291 **DST#: 3**
Test Start: 2014.10.27 @ 06:25:00

GENERAL INFORMATION:

Formation: **KC 'E'**
Deviated: **No Whipstock** **ft (KB)**
Time Tool Opened: 09:22:30
Time Test Ended: 12:34:30
Test Type: **Conventional Bottom Hole (Res.)**
Tester: **Jace McKinney**
Unit No: **75**
Interval: **3905.00 ft (KB) To 3925.00 ft (KB) (TVD)**
Reference Elevations: **2839.00 ft (KE)**
Total Depth: **3925.00 ft (KB) (TVD)** **2829.00 ft (CF)**
Hole Diameter: **7.88 inches** Hole Condition: **Poor** **KB to GR/CF: 10.00 ft**

Serial #: 8675 **Inside**
Press@RunDepth: **19.40 psig @ 3906.00 ft (KB)** Capacity: **8000.00 psig**
Start Date: **2014.10.27** End Date: **2014.10.27** Last Calib.: **2014.10.27**
Start Time: **06:25:15** End Time: **12:34:30** Time On Btm: **2014.10.27 @ 09:22:00**
Time Off Btm: **2014.10.27 @ 10:39:15**

TEST COMMENT: Built to 1/4" blow
No return blow
No blow
Pulled



PRESSURE SUMMARY

Time (Min.)	Pressure (psig)	Temp (deg F)	Annotation
0	1891.69	102.39	Initial Hydro-static
1	17.76	101.77	Open To Flow (1)
30	19.40	102.83	Shut-in(1)
61	359.98	104.26	End Shut-in(1)
61	20.88	104.02	Open To Flow (2)
77	20.63	104.78	Shut-in(2)
78	1871.68	105.80	Final Hydro-static

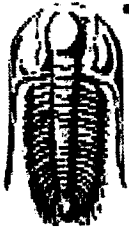
Recovery

Length (ft)	Description	Volume (bbl)
10.00	ocm 2%O 98%M	0.14

* Recovery from multiple tests

Gas Rates

	Choke (inches)	Pressure (psig)	Gas Rate (scf/d)



**TRILOBITE
TESTING, INC.**

DRILL STEM TEST REPORT

Blake Exploration, LLC
201 S Main, PO Box 150
Bogue KS 67625
ATTN: Mike Davignon

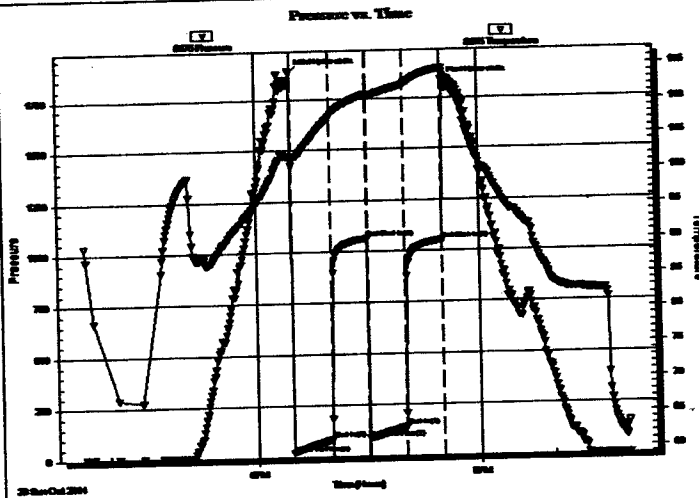
8-14s-32w Logan, KS
Kroneberger #1
Job Ticket: 57290 **DST#: 2**
Test Start: 2014.10.26 @ 15:40:00

GENERAL INFORMATION:

Formation: **KC 'D'**
Deviated: **No** Whipstock: ft (KB)
Time Tool Opened: 18:29:00
Time Test Ended: 23:00:30
Interval: **3875.00 ft (KB) To 3900.00 ft (KB) (TVD)**
Total Depth: **3900.00 ft (KB) (TVD)**
Hole Diameter: **7.88 inches** Hole Condition: **Poor**
Test Type: **Conventional Bottom Hole (Reset)**
Tester: **Jace McKinney**
Unit No: **75**
Reference Elevations: **2839.00 ft (KB)**
2829.00 ft (CF)
KB to GR/CF: **10.00 ft**

Serial #: 8675 **Inside**
Press@RunDepth: **142.99 psig @ 3876.00 ft (KB)**
Start Date: **2014.10.26** End Date: **2014.10.26**
Start Time: **15:40:15** End Time: **23:00:30**
Capacity: **8000.00 psig**
Last Calib.: **2014.10.26**
Time On Btm: **2014.10.26 @ 18:28:00**
Time Off Btm: **2014.10.26 @ 20:31:30**

TEST COMMENT: B.O.B. in 25 min.
Bled off for 5 min. No return blow
Built to 10" blow
Bled off for 5 min. No return blow



PRESSURE SUMMARY

Time (Min.)	Pressure (psig)	Temp (deg F)	Annotation
0	1879.61	102.10	Initial Hydro-static
1	19.49	100.77	Open To Flow (1)
32	86.65	107.76	Shut-In(1)
62	1064.05	111.07	End Shut-In(1)
63	89.77	110.71	Open To Flow (2)
92	142.99	112.35	Shut-In(2)
123	1053.91	114.64	End Shut-In(2)
124	1830.47	114.13	Final Hydro-static

Recovery

Length (ft)	Description	Volume (bbl)
5.00	Clean Oil	0.07
134.00	mco 20%M 80%W	1.88
124.00	100%Water	1.74

Gas Rates

	Choke (inches)	Pressure (psig)	Gas Rate (Mcf/d)

* Recovery from multiple tests

