



DRILL STEM TEST REPORT

Prepared For: **American Warrior Inc**

PO Box 399
Garden City, KS 67846

ATTN: Jim Musgrove

Oeser #2

18-16s-11w Barton,KS

Start Date: 2014.12.17 @ 04:34:00

End Date: 2014.12.17 @ 10:19:00

Job Ticket #: 62037 DST #: 1

Trilobite Testing, Inc
1515 Commerce Parkway Hays, KS 67601
ph: 785-625-4778 fax: 785-625-5620

Printed: 2014.12.19 @ 14:27:43



TRILOBITE TESTING, INC

DRILL STEM TEST REPORT

American Warrior Inc
 PO Box 399
 Garden City, KS 67846
 ATTN: Jim Musgrove

18-16s-11w Barton,KS
Oeser #2
 Job Ticket: 62037 **DST#: 1**
 Test Start: 2014.12.17 @ 04:34:00

GENERAL INFORMATION:

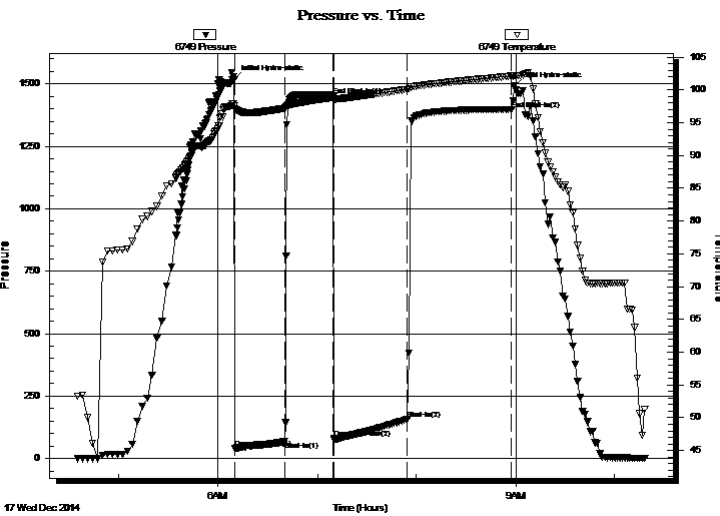
Formation: **LKC A-C**
 Deviated: No Whipstock: ft (KB)
 Time Tool Opened: 06:10:00
 Time Test Ended: 10:19:00
 Interval: **3041.00 ft (KB) To 3094.00 ft (KB) (TVD)**
 Total Depth: 3094.00 ft (KB) (TVD)
 Hole Diameter: 7.88 inches Hole Condition: Fair
 Test Type: Conventional Bottom Hole (Initial)
 Tester: Ken Swinney
 Unit No: S1
 Reference Elevations: 1903.00 ft (KB)
 1895.00 ft (CF)
 KB to GR/CF: 8.00 ft

Serial #: 6749

Inside

Press@RunDepth: 156.54 psig @ 3090.03 ft (KB) Capacity: 8000.00 psig
 Start Date: 2014.12.17 End Date: 2014.12.17 Last Calib.: 2014.12.17
 Start Time: 04:35:00 End Time: 10:19:00 Time On Btm: 2014.12.17 @ 06:09:40
 Time Off Btm: 2014.12.17 @ 08:59:00

TEST COMMENT: IFP 30 Minutes Fair blow built to 10"
 ISI 30 Mintues No blow back
 FFP 45 Minutes BOB n 16 minutes
 FSI 60 Minutes Slight surface blow back



PRESSURE SUMMARY

Time (Min.)	Pressure (psig)	Temp (deg F)	Annotation
0	1516.63	97.62	Initial Hydro-static
1	42.01	97.15	Open To Flow (1)
31	68.60	97.21	Shut-In(1)
60	1453.57	98.88	End Shut-In(1)
61	80.26	98.31	Open To Flow (2)
105	156.54	100.07	Shut-In(2)
168	1397.84	102.12	End Shut-In(2)
170	1490.64	102.15	Final Hydro-static

Recovery

Length (ft)	Description	Volume (bbl)
263.00	Slightly gas cut mud Gas 2% Mud 98%	3.69

Gas Rates

	Choke (inches)	Pressure (psig)	Gas Rate (Mcf/d)



**TRILOBITE
TESTING, INC**

DRILL STEM TEST REPORT

TOOL DIAGRAM

American Warrior Inc
PO Box 399
Garden City, KS 67846
ATTN: Jim Musgrove

18-16s-11w Barton,KS
Oeser #2
Job Ticket: 62037 **DST#: 1**
Test Start: 2014.12.17 @ 04:34:00

Tool Information

Drill Pipe:	Length: 3036.00 ft	Diameter: 3.80 inches	Volume: 42.59 bbl	Tool Weight: 2000.00 lb
Heavy Wt. Pipe:	Length: 0.00 ft	Diameter: 0.00 inches	Volume: 0.00 bbl	Weight set on Packer: 20000.00 lb
Drill Collar:	Length: 0.00 ft	Diameter: 0.00 inches	Volume: 0.00 bbl	Weight to Pull Loose: 48000.00 lb
			<u>Total Volume: 42.59 bbl</u>	Tool Chased 0.00 ft
Drill Pipe Above KB:	15.00 ft			String Weight: Initial 36000.00 lb
Depth to Top Packer:	3041.00 ft			Final 36000.00 lb
Depth to Bottom Packer:	ft			
Interval between Packers:	53.03 ft			
Tool Length:	73.03 ft			
Number of Packers:	2	Diameter: 6.75 inches		

Tool Comments:

Tool Description	Length (ft)	Serial No.	Position	Depth (ft)	Accum. Lengths
-------------------------	--------------------	-------------------	-----------------	-------------------	-----------------------

Shut-In Tool	5.00			3026.00	
Hydraulic tool	5.00			3031.00	
Top Packer	5.00			3036.00	
Packer	5.00			3041.00	20.00 Bottom Of Top Packer
Anchor	5.00			3046.00	
Change Over Sub	0.75			3046.75	
Drill Pipe	31.53			3078.28	
Change Over Sub	0.75			3079.03	
Anchor	10.00			3089.03	
Recorder	1.00	6749	Inside	3090.03	
Recorder	1.00	6663	Outside	3091.03	
Bullnose	3.00			3094.03	53.03 Anchor Tool

Total Tool Length: 73.03



**TRILOBITE
TESTING, INC**

DRILL STEM TEST REPORT

FLUID SUMMARY

American Warrior Inc
PO Box 399
Garden City, KS 67846
ATTN: Jim Musgrove

18-16s-11w Barton,KS
Oeser #2
Job Ticket: 62037 **DST#: 1**
Test Start: 2014.12.17 @ 04:34:00

Mud and Cushion Information

Mud Type: Gel Chem	Cushion Type:	Oil API:	deg API
Mud Weight: 9.00 lb/gal	Cushion Length: ft	Water Salinity:	ppm
Viscosity: 51.00 sec/qt	Cushion Volume: bbl		
Water Loss: 7.98 in ³	Gas Cushion Type:		
Resistivity: ohm.m	Gas Cushion Pressure: psig		
Salinity: 5700.00 ppm			
Filter Cake: 2.00 inches			

Recovery Information

Recovery Table

Length ft	Description	Volume bbl
263.00	Slightly gas cut mud Gas 2% Mud 98%	3.689

Total Length: 263.00 ft Total Volume: 3.689 bbl
Num Fluid Samples: 0 Num Gas Bombs: 0 Serial #:
Laboratory Name: Laboratory Location:
Recovery Comments:

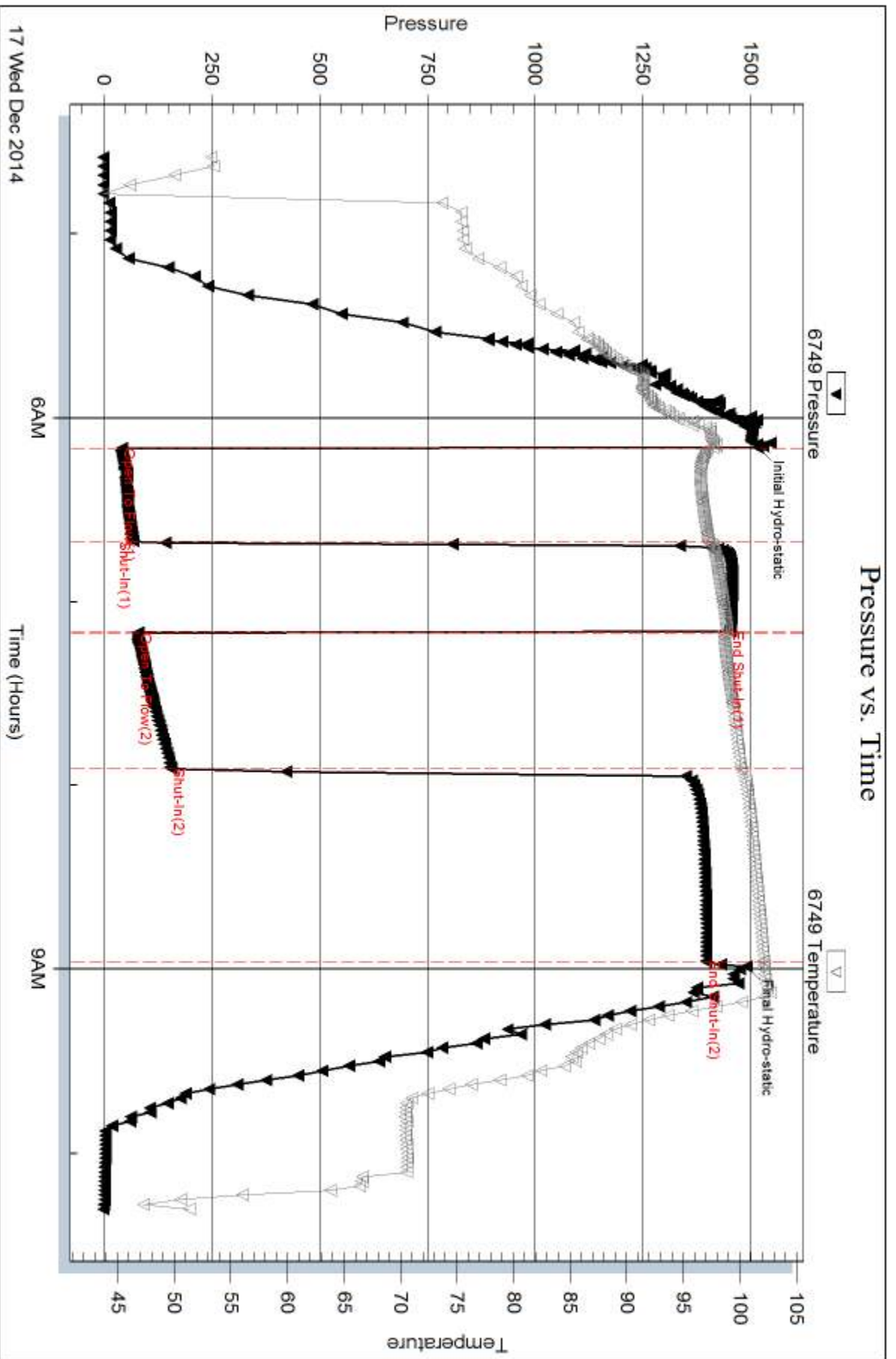
Serial #: 6749

Inside

American Warrior Inc

Oeser #2

DST Test Number: 1



Trilobite Testing, Inc

Ref. No: 62037

Printed: 2014.12.19 @ 14:27:44



DRILL STEM TEST REPORT

Prepared For: **American Warrior Inc**

PO Box 399
Garden City, KS 67846

ATTN: Jim Musgrove

Oeser #2

18-16s-11w Barton,KS

Start Date: 2014.12.18 @ 03:13:00

End Date: 2014.12.18 @ 09:32:00

Job Ticket #: 63038 DST #: 2

Trilobite Testing, Inc
1515 Commerce Parkway Hays, KS 67601
ph: 785-625-4778 fax: 785-625-5620

Printed: 2014.12.19 @ 14:27:20



**TRILOBITE
TESTING, INC**

DRILL STEM TEST REPORT

American Warrior Inc
PO Box 399
Garden City, KS 67846
ATTN: Jim Musgrove

18-16s-11w Barton,KS
Oeser #2
Job Ticket: 63038 **DST#: 2**
Test Start: 2014.12.18 @ 03:13:00

GENERAL INFORMATION:

Formation: **LKC H-J**
Deviated: No Whipstock: ft (KB)
Time Tool Opened: 05:17:30
Time Test Ended: 09:32:00
Interval: **3170.00 ft (KB) To 3250.00 ft (KB) (TVD)**
Total Depth: 3250.00 ft (KB) (TVD)
Hole Diameter: 7.88 inches Hole Condition: Fair
Test Type: Conventional Bottom Hole (Initial)
Tester: Ken Swinney
Unit No: S1
Reference Elevations: 1903.00 ft (KB)
1895.00 ft (CF)
KB to GR/CF: 8.00 ft

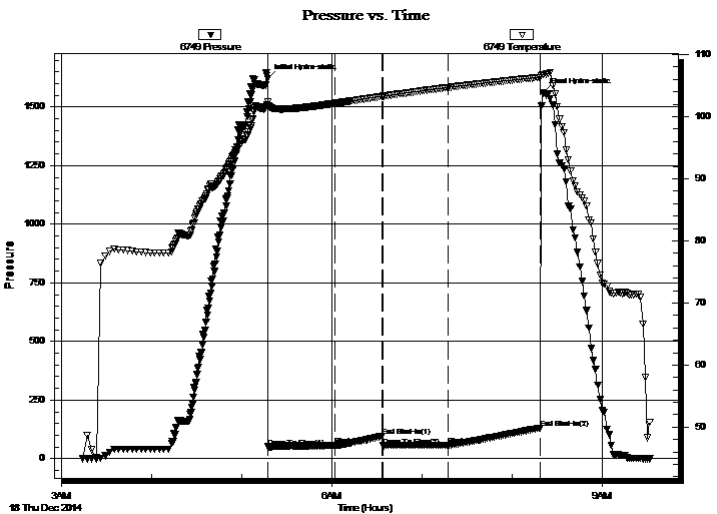
Serial #: 6749

Inside

Press@RunDepth: 58.31 psig @ 3246.20 ft (KB) Capacity: 8000.00 psig
Start Date: 2014.12.18 End Date: 2014.12.18 Last Calib.: 2014.12.18
Start Time: 03:14:00 End Time: 09:32:00 Time On Btm: 2014.12.18 @ 05:17:10
Time Off Btm: 2014.12.18 @ 08:20:30

TEST COMMENT: IFP 45 Mintues Weak blow built to 4 1/2"
ISI 30 Mintues No blow back
FFP 45 Mintues Weak blow built to 4"
FSI 60 Mintues No blow back

PRESSURE SUMMARY



Time (Min.)	Pressure (psig)	Temp (deg F)	Annotation
0	1620.42	102.35	Initial Hydro-static
1	49.93	101.83	Open To Flow (1)
45	56.07	102.15	Shut-In(1)
76	95.44	103.27	End Shut-In(1)
77	54.87	103.29	Open To Flow (2)
120	58.31	104.70	Shut-In(2)
182	130.16	106.34	End Shut-In(2)
184	1559.39	106.81	Final Hydro-static

Recovery

Length (ft)	Description	Volume (bbl)
0.00	45 feet of gas in pipe	0.00
15.00	Mud with show of oil/Mud 100%	0.21

Gas Rates

	Choke (inches)	Pressure (psig)	Gas Rate (Mcf/d)



**TRILOBITE
TESTING, INC**

DRILL STEM TEST REPORT

American Warrior Inc
PO Box 399
Garden City, KS 67846
ATTN: Jim Musgrove

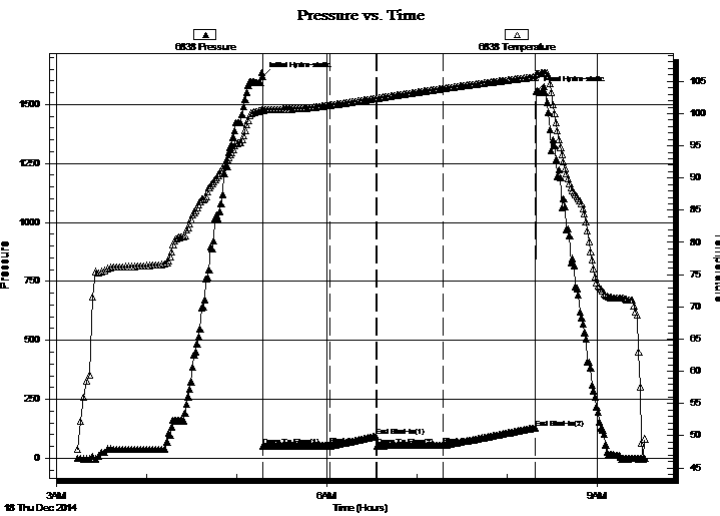
18-16s-11w Barton,KS
Oeser #2
Job Ticket: 63038 **DST#: 2**
Test Start: 2014.12.18 @ 03:13:00

GENERAL INFORMATION:

Formation: **LKC H-J**
Deviated: No Whipstock: ft (KB)
Time Tool Opened: 05:17:30
Time Test Ended: 09:32:00
Interval: **3170.00 ft (KB) To 3250.00 ft (KB) (TVD)**
Total Depth: 3250.00 ft (KB) (TVD)
Hole Diameter: 7.88 inches Hole Condition: Fair
Test Type: Conventional Bottom Hole (Initial)
Tester: Ken Swinney
Unit No: S1
Reference Elevations: 1903.00 ft (KB)
1895.00 ft (CF)
KB to GR/CF: 8.00 ft

Serial #: 6838 Outside
Press@RunDepth: 129.08 psig @ 3247.20 ft (KB) Capacity: 8000.00 psig
Start Date: 2014.12.18 End Date: 2014.12.18 Last Calib.: 2014.12.18
Start Time: 03:14:00 End Time: 09:31:30 Time On Btm: 2014.12.18 @ 05:17:00
Time Off Btm: 2014.12.18 @ 08:20:00

TEST COMMENT: IFP 45 Mintues Weak blow built to 4 1/2"
ISI 30 Mintues No blow back
FFP 45 Mintues Weak blow built to 4"
FSI 60 Mintues No blow back



PRESSURE SUMMARY

Time (Min.)	Pressure (psig)	Temp (deg F)	Annotation
0	1619.14	100.78	Initial Hydro-static
1	49.96	100.47	Open To Flow (1)
45	54.14	101.30	Shut-In(1)
76	94.61	102.36	End Shut-In(1)
77	52.88	102.39	Open To Flow (2)
120	56.37	103.88	Shut-In(2)
182	129.08	105.69	End Shut-In(2)
183	1559.03	106.17	Final Hydro-static

Recovery

Length (ft)	Description	Volume (bbl)
0.00	45 feet of gas in pipe	0.00
15.00	Mud with show of oil/Mud 100%	0.21

Gas Rates

	Choke (inches)	Pressure (psig)	Gas Rate (Mcf/d)



**TRILOBITE
TESTING, INC**

DRILL STEM TEST REPORT

TOOL DIAGRAM

American Warrior Inc
PO Box 399
Garden City, KS 67846
ATTN: Jim Musgrove

18-16s-11w Barton,KS
Oeser #2
Job Ticket: 63038 **DST#: 2**
Test Start: 2014.12.18 @ 03:13:00

Tool Information

Drill Pipe:	Length: 3162.00 ft	Diameter: 3.80 inches	Volume: 44.35 bbl	Tool Weight:	2000.00 lb
Heavy Wt. Pipe:	Length: 0.00 ft	Diameter: 0.00 inches	Volume: 0.00 bbl	Weight set on Packer:	20000.00 lb
Drill Collar:	Length: 0.00 ft	Diameter: 0.00 inches	Volume: 0.00 bbl	Weight to Pull Loose:	40000.00 lb
			<u>Total Volume: 44.35 bbl</u>	Tool Chased	0.00 ft
Drill Pipe Above KB:	12.00 ft			String Weight: Initial	37000.00 lb
Depth to Top Packer:	3170.00 ft			Final	38000.00 lb
Depth to Bottom Packer:	ft				
Interval between Packers:	80.20 ft				
Tool Length:	100.20 ft				
Number of Packers:	2	Diameter: 6.75 inches			

Tool Comments:

Tool Description	Length (ft)	Serial No.	Position	Depth (ft)	Accum. Lengths
-------------------------	--------------------	-------------------	-----------------	-------------------	-----------------------

Shut-In Tool	5.00			3155.00	
Hydraulic tool	5.00			3160.00	
Top Packer	5.00			3165.00	
Packer	5.00			3170.00	20.00 Bottom Of Top Packer
Anchor	5.00			3175.00	
Change Over Sub	0.75			3175.75	
Drill Pipe	31.70			3207.45	
Change Over Sub	0.75			3208.20	
Anchor	37.00			3245.20	
Recorder	1.00	6749	Inside	3246.20	
Recorder	1.00	6838	Outside	3247.20	
Bullnose	3.00			3250.20	80.20 Anchor Tool

Total Tool Length: 100.20



**TRILOBITE
TESTING, INC**

DRILL STEM TEST REPORT

FLUID SUMMARY

American Warrior Inc
PO Box 399
Garden City, KS 67846
ATTN: Jim Musgrove

18-16s-11w Barton,KS
Oeser #2
Job Ticket: 63038 **DST#: 2**
Test Start: 2014.12.18 @ 03:13:00

Mud and Cushion Information

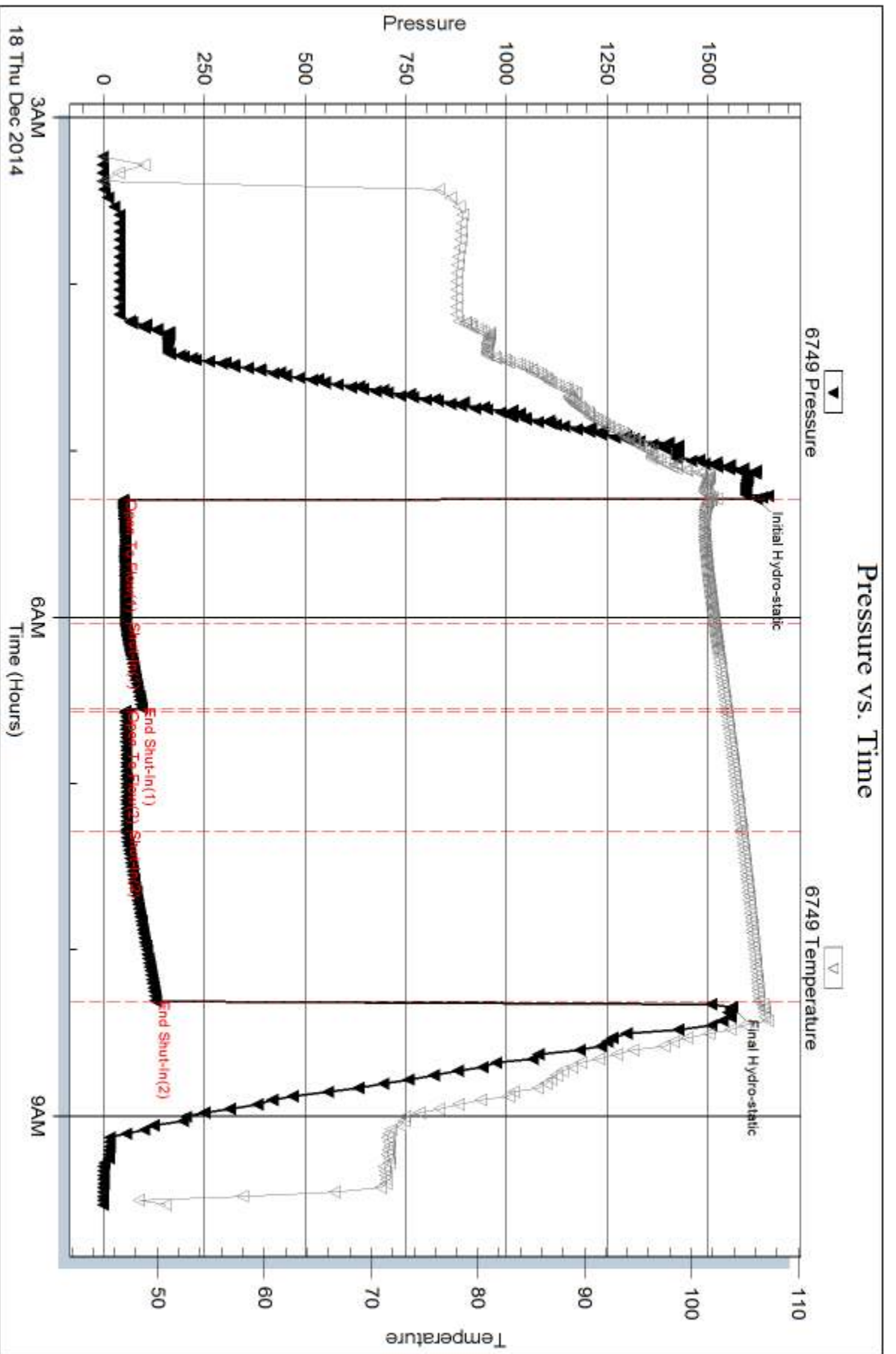
Mud Type: Gel Chem	Cushion Type:	Oil API:	deg API
Mud Weight: 9.00 lb/gal	Cushion Length: ft	Water Salinity:	ppm
Viscosity: 51.00 sec/qt	Cushion Volume: bbl		
Water Loss: 7.99 in ³	Gas Cushion Type:		
Resistivity: ohm.m	Gas Cushion Pressure: psig		
Salinity: 5700.00 ppm			
Filter Cake: 2.00 inches			

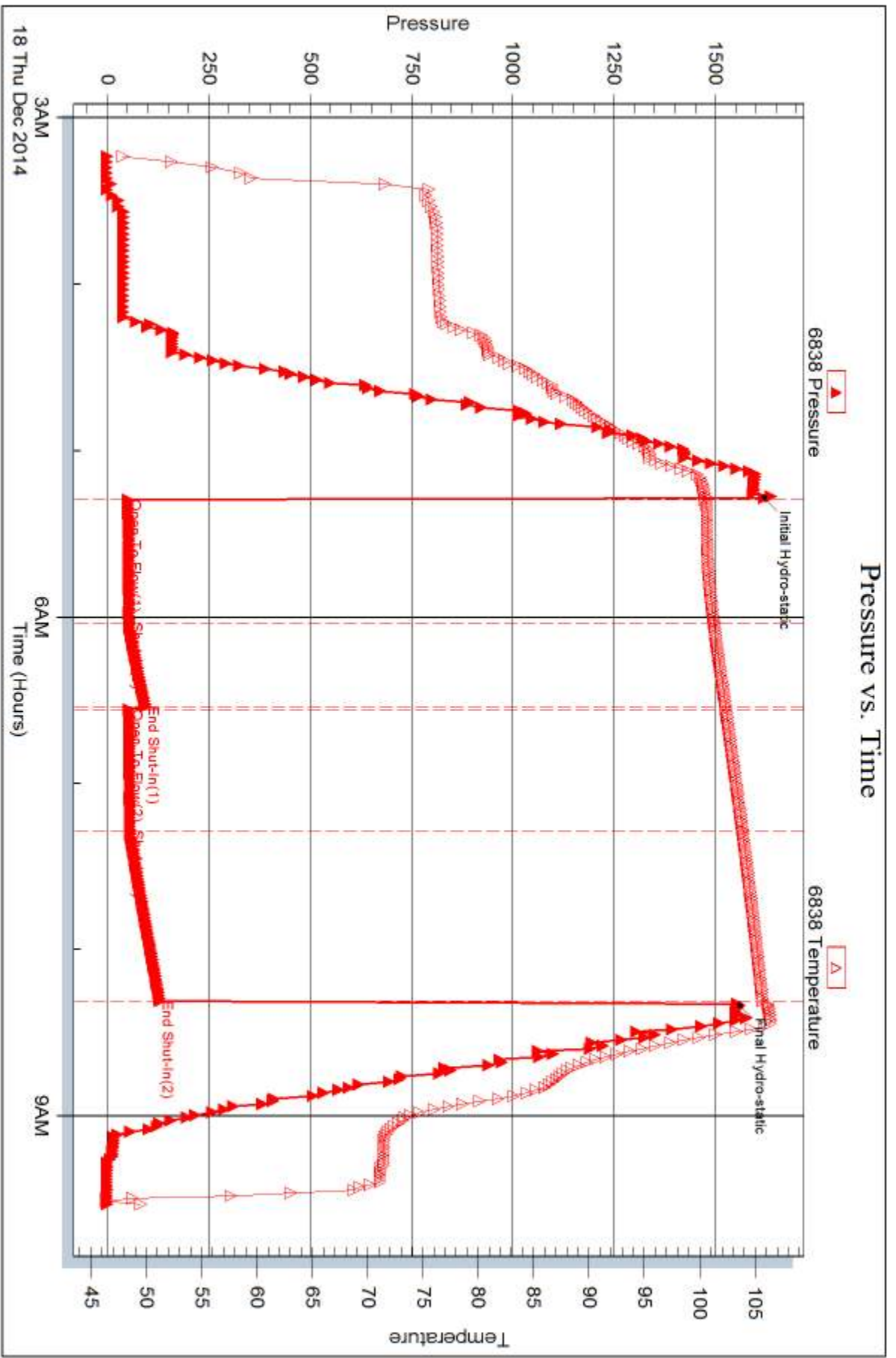
Recovery Information

Recovery Table

Length ft	Description	Volume bbl
0.00	45 feet of gas in pipe	0.000
15.00	Mud with show of oil/Mud 100%	0.210

Total Length: 15.00 ft Total Volume: 0.210 bbl
Num Fluid Samples: 0 Num Gas Bombs: 0 Serial #:
Laboratory Name: Laboratory Location:
Recovery Comments:







DRILL STEM TEST REPORT

Prepared For: **American Warrior Inc**

PO Box 399
Garden City, KS 67846

ATTN: Jim Musgrove

Oeser #2

18-16s-11w Barton,KS

Start Date: 2014.12.19 @ 02:44:00

End Date: 2014.12.19 @ 07:44:30

Job Ticket #: 62039 DST #: 3

Trilobite Testing, Inc
1515 Commerce Parkway Hays, KS 67601
ph: 785-625-4778 fax: 785-625-5620

Printed: 2014.12.19 @ 14:26:49



TRILOBITE TESTING, INC

DRILL STEM TEST REPORT

American Warrior Inc
 PO Box 399
 Garden City, KS 67846
 ATTN: Jim Musgrove

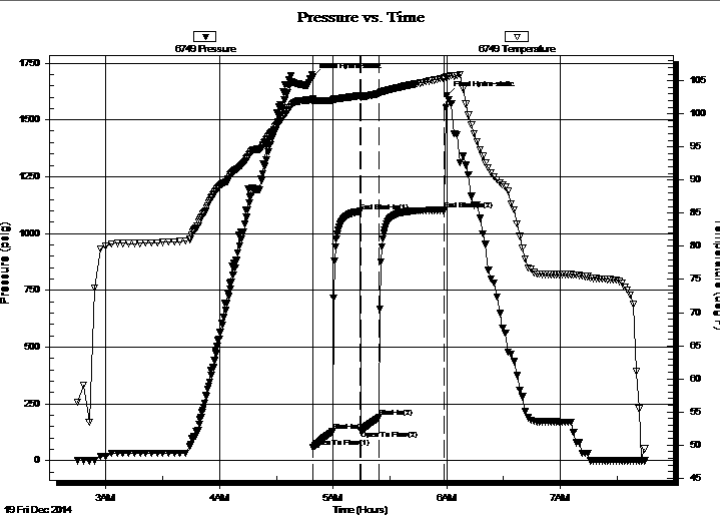
18-16s-11w Barton,KS
Oeser #2
 Job Ticket: 62039 **DST#: 3**
 Test Start: 2014.12.19 @ 02:44:00

GENERAL INFORMATION:

Formation: **Arbuckle**
 Deviated: No Whipstock: ft (KB)
 Time Tool Opened: 04:49:30
 Time Test Ended: 07:44:30
 Interval: **3301.00 ft (KB) To 3361.00 ft (KB) (TVD)**
 Total Depth: 3361.00 ft (KB) (TVD)
 Hole Diameter: 7.88 inches Hole Condition: Fair
 Test Type: Conventional Bottom Hole (Initial)
 Tester: Ken Swinney
 Unit No: S1
 Reference Elevations: 1903.00 ft (KB)
 1895.00 ft (CF)
 KB to GR/CF: 8.00 ft

Serial #: 6749 Inside
 Press@RunDepth: 190.62 psig @ 3357.10 ft (KB) Capacity: 8000.00 psig
 Start Date: 2014.12.19 End Date: 2014.12.19 Last Calib.: 2014.12.19
 Start Time: 02:45:00 End Time: 07:44:30 Time On Btm: 2014.12.19 @ 04:49:10
 Time Off Btm: 2014.12.19 @ 06:00:00

TEST COMMENT: IFP 10 Minutes BOB in 4 minutes 30 seconds
 ISI 15 Minutes No blow back
 FFP 10 Minutes BOB in 5 minutes
 FSI 30 Minutes No blow back



PRESSURE SUMMARY			
Time (Min.)	Pressure (psig)	Temp (deg F)	Annotation
0	1688.28	102.24	Initial Hydro-static
1	58.25	101.86	Open To Flow (1)
11	128.07	102.01	Shut-In(1)
26	1097.03	102.79	End Shut-In(1)
26	132.11	102.46	Open To Flow (2)
36	190.62	103.06	Shut-In(2)
70	1102.68	105.40	End Shut-In(2)
71	1605.84	105.61	Final Hydro-static

Recovery		
Length (ft)	Description	Volume (bbl)
315.00	WM with show of oil Water 30% Mud 70%	4.42

Gas Rates			
	Choke (inches)	Pressure (psig)	Gas Rate (Mcf/d)



**TRILOBITE
TESTING, INC**

DRILL STEM TEST REPORT

American Warrior Inc
PO Box 399
Garden City, KS 67846
ATTN: Jim Musgrove

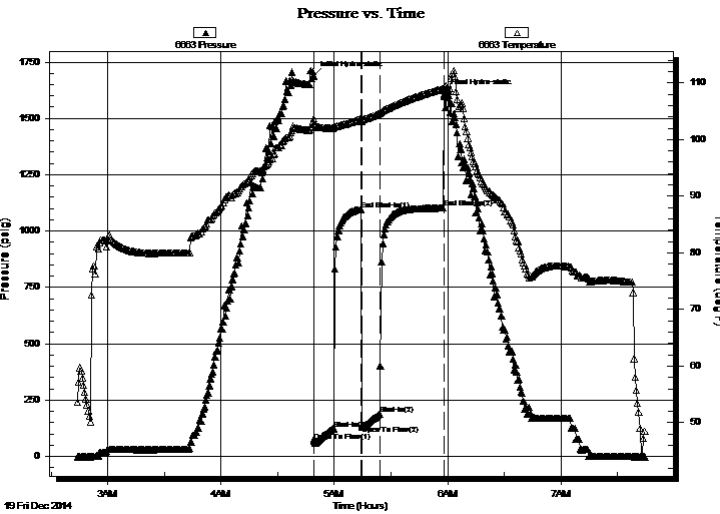
18-16s-11w Barton, KS
Oeser #2
Job Ticket: 62039 **DST#: 3**
Test Start: 2014.12.19 @ 02:44:00

GENERAL INFORMATION:

Formation: **Arbuckle**
Deviated: No Whipstock: ft (KB)
Time Tool Opened: 04:49:30
Time Test Ended: 07:44:30
Interval: **3301.00 ft (KB) To 3361.00 ft (KB) (TVD)**
Total Depth: 3361.00 ft (KB) (TVD)
Hole Diameter: 7.88 inches Hole Condition: Fair
Test Type: Conventional Bottom Hole (Initial)
Tester: Ken Swinney
Unit No: S1
Reference Elevations: 1903.00 ft (KB)
1895.00 ft (CF)
KB to GR/CF: 8.00 ft

Serial #: 6663 Outside
Press@RunDepth: 1102.29 psig @ 3358.10 ft (KB)
Start Date: 2014.12.19 End Date: 2014.12.19
Start Time: 02:44:01 End Time: 07:44:36
Capacity: 8000.00 psig
Last Calib.: 2014.12.19
Time On Btm: 2014.12.19 @ 04:49:06
Time Off Btm: 2014.12.19 @ 05:58:12

TEST COMMENT: IFP 10 Minutes BOB in 4 minutes 30 seconds
ISI 15 Minutes No blow back
FFP 10 Minutes BOB in 5 minutes
FSI 30 Minutes No blow back



PRESSURE SUMMARY

Time (Min.)	Pressure (psig)	Temp (deg F)	Annotation
0	1688.27	103.69	Initial Hydro-static
1	66.53	102.91	Open To Flow (1)
11	122.08	102.05	Shut-In(1)
26	1096.76	103.69	End Shut-In(1)
26	138.20	103.23	Open To Flow (2)
35	188.36	104.61	Shut-In(2)
69	1102.29	109.00	End Shut-In(2)
70	1608.53	109.16	Final Hydro-static

Recovery

Length (ft)	Description	Volume (bbl)
315.00	WM with show of oil Water 30% Mud 70%	4.42

Gas Rates

Choke (inches)	Pressure (psig)	Gas Rate (Mcf/d)



**TRILOBITE
TESTING, INC**

DRILL STEM TEST REPORT

TOOL DIAGRAM

American Warrior Inc
PO Box 399
Garden City, KS 67846
ATTN: Jim Musgrove

18-16s-11w Barton,KS
Oeser #2
Job Ticket: 62039 **DST#: 3**
Test Start: 2014.12.19 @ 02:44:00

Tool Information

Drill Pipe:	Length: 3287.00 ft	Diameter: 3.80 inches	Volume: 46.11 bbl	Tool Weight:	2000.00 lb
Heavy Wt. Pipe:	Length: 0.00 ft	Diameter: 0.00 inches	Volume: 0.00 bbl	Weight set on Packer:	20000.00 lb
Drill Collar:	Length: 0.00 ft	Diameter: 0.00 inches	Volume: 0.00 bbl	Weight to Pull Loose:	48000.00 lb
			<u>Total Volume: 46.11 bbl</u>	Tool Chased	0.00 ft
Drill Pipe Above KB:	6.00 ft			String Weight: Initial	40000.00 lb
Depth to Top Packer:	3301.00 ft			Final	41000.00 lb
Depth to Bottom Packer:	ft				
Interval between Packers:	60.10 ft				
Tool Length:	80.10 ft				
Number of Packers:	2	Diameter: 6.75 inches			

Tool Comments:

Tool Description	Length (ft)	Serial No.	Position	Depth (ft)	Accum. Lengths
-------------------------	--------------------	-------------------	-----------------	-------------------	-----------------------

Shut-In Tool	5.00			3286.00	
Hydraulic tool	5.00			3291.00	
Top Packer	5.00			3296.00	
Packer	5.00			3301.00	20.00 Bottom Of Top Packer
Anchor	5.00			3306.00	
Change Over Sub	0.75			3306.75	
Drill Pipe	31.60			3338.35	
Change Over Sub	0.75			3339.10	
Anchor	17.00			3356.10	
Recorder	1.00	6749	Inside	3357.10	
Recorder	1.00	6663	Outside	3358.10	
Bullnose	3.00			3361.10	60.10 Anchor Tool

Total Tool Length: 80.10



**TRILOBITE
TESTING, INC**

DRILL STEM TEST REPORT

FLUID SUMMARY

American Warrior Inc
PO Box 399
Garden City, KS 67846
ATTN: Jim Musgrove

18-16s-11w Barton,KS
Oeser #2
Job Ticket: 62039 **DST#: 3**
Test Start: 2014.12.19 @ 02:44:00

Mud and Cushion Information

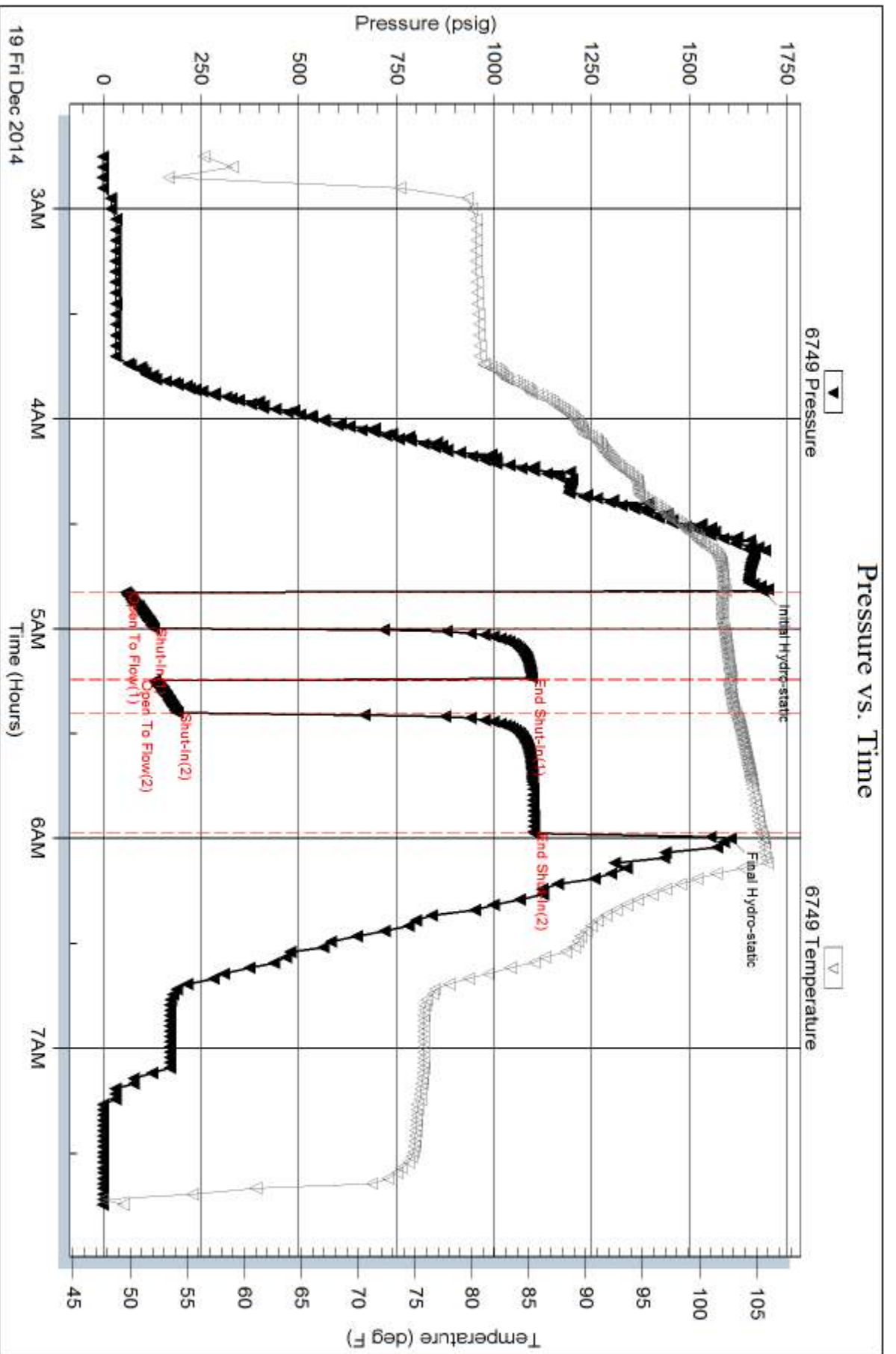
Mud Type: Gel Chem	Cushion Type:	Oil API:	deg API
Mud Weight: 9.00 lb/gal	Cushion Length: ft	Water Salinity:	11000 ppm
Viscosity: 57.00 sec/qt	Cushion Volume: bbl		
Water Loss: 7.98 in ³	Gas Cushion Type:		
Resistivity: ohm.m	Gas Cushion Pressure: psig		
Salinity: 6500.00 ppm			
Filter Cake: 2.00 inches			

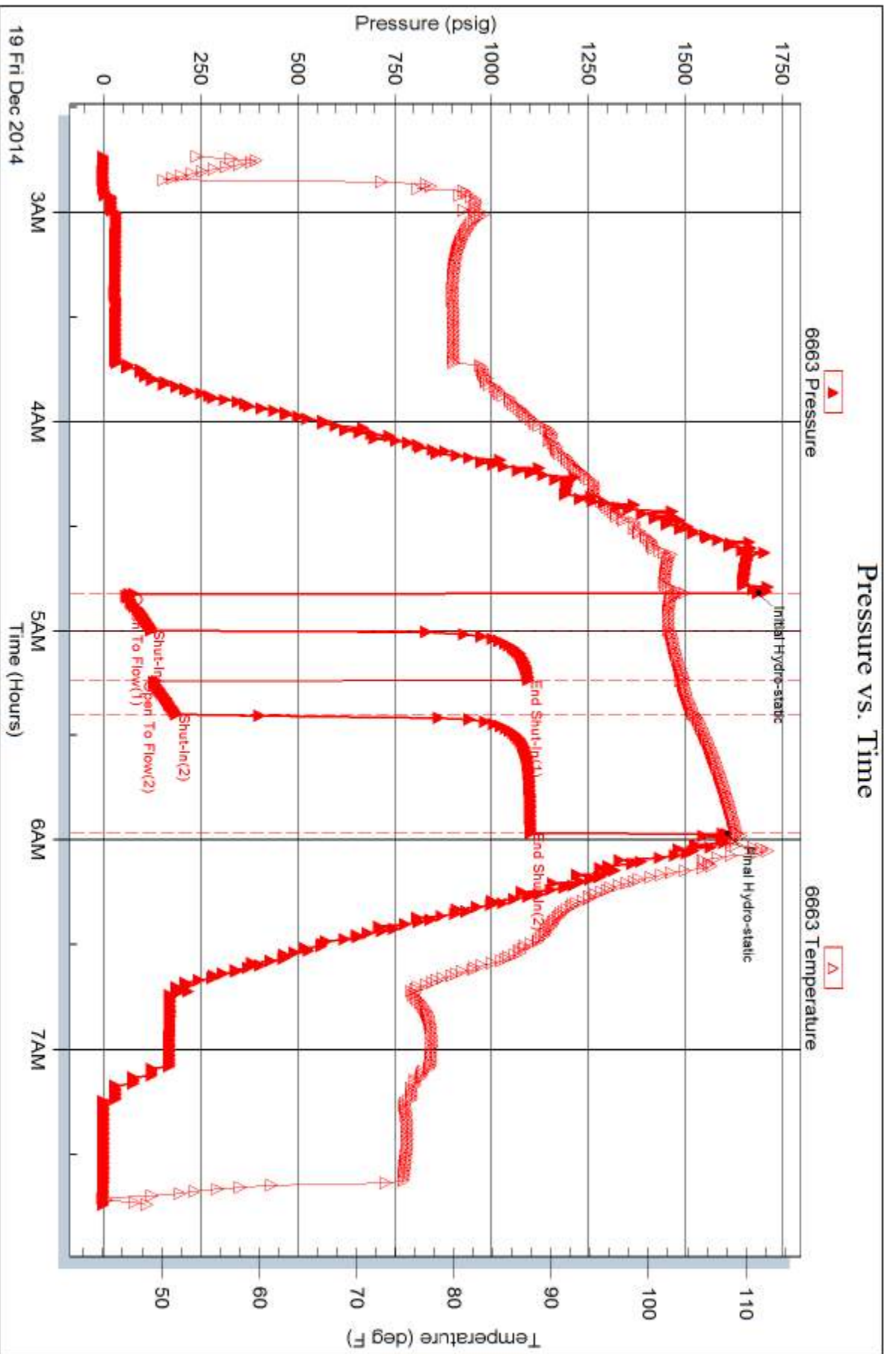
Recovery Information

Recovery Table

Length ft	Description	Volume bbl
315.00	WM with show of oil Water 30% Mud 70%	4.419

Total Length: 315.00 ft Total Volume: 4.419 bbl
Num Fluid Samples: 0 Num Gas Bombs: 0 Serial #:
Laboratory Name: Laboratory Location:
Recovery Comments:







TRILOBITE TESTING INC.

1515 Commerce Parkway • Hays, Kansas 67601

Test Ticket

NO. 62037

Well Name & No. Deser # 2 Test No. 1 Date 12 Dec 14
 Company American Warrior Incorporated Elevation 1903 KB 1895 GL
 Address 3118 Cummings Road PO Box 399 Garden City Kansas 67846
 Co. Rep / Geo. Jim Musgrove Rig Duke Rig #8
 Location: Sec. 18 Twp. 16 S Rge. 11 W Co. Barton State KS

Interval Tested 3041-3094 Zone Tested Lansing/Kansas City cones A-C
 Anchor Length 53 Drill Pipe Run 3036 Mud Wt. 9.2
 Top Packer Depth 3036 Drill Collars Run 0 Vis 51
 Bottom Packer Depth 3041 Wt. Pipe Run 0 WL 8.0
 Total Depth 3094 Chlorides 5700 ppm System LCM 0
 Blow Description Fair blow/ Blow built to 10 inches
No blow back
Good blow/ Blow built to bottom of bucket in 16 minutes
Slight surface blow back

Rec	Feet of	%gas	%oil	%water	%mud
<u>263</u>	<u>Slightly gas cut mud</u>	<u>2</u>			<u>98</u>
Rec	Feet of	%gas	%oil	%water	%mud
Rec	Feet of	%gas	%oil	%water	%mud
Rec	Feet of	%gas	%oil	%water	%mud
Rec	Feet of	%gas	%oil	%water	%mud

Rec Total _____ BHT _____ Gravity _____ API RW _____ @ _____ °F Chlorides _____ ppm

(A) Initial Hydrostatic 1516 Test 1150 T-On Location 1:45 am
 (B) First Initial Flow 40 Jars _____ T-Started 4:34 am
 (C) First Final Flow 68 Safety Joint _____ T-Open 6:11 am
 (D) Initial Shut-In 1453 Circ Sub _____ T-Pulled 8:56 am
 (E) Second Initial Flow 80 Hourly Standby _____ T-Out 10:10 am
 (F) Second Final Flow 156 Mileage 62 96.10 Comments _____
 (G) Final Shut-In 1397 Sampler _____
 (H) Final Hydrostatic 1490 Straddle _____
 Ruined Shale Packer _____
 Ruined Packer _____
 Extra Copies _____
 Initial Open 30 Extra Packer _____
 Initial Shut-In 30 Extra Recorder _____ Sub Total 0
 Final Flow 45 Day Standby _____ Total 1246.10
 Final Shut-In 60 Accessibility _____ MP/DST Disc't _____
 Sub Total 1246.10

Approved By _____ Our Representative [Signature]

Trilobite Testing Inc. shall not be liable for damaged of any kind of the property or personnel of the one for whom a test is made, or for any loss suffered or sustained, directly or indirectly, through the use of its equipment, or its statements or opinion concerning the results of any test, tools lost or damaged in the hole shall be paid for at cost by the party for whom the test is made.



TRILOBITE TESTING INC.

1515 Commerce Parkway • Hays, Kansas 67601

Test Ticket

NO. 62038

Well Name & No. Oeser # 2 Test No. 2 Date 18 Dec 14
 Company American Warrior Incorporated Elevation 1903 KB 1895 GL
 Address 3118 Cummings Road PO Box 399 Garden City, Kansas 67846
 Co. Rep / Geo. Jim Musgrave Rig Duke Rig #8
 Location: Sec. 18 Twp. 16S Rge. 11W Co. Barton State KS

Interval Tested 3170 - 3250 Zone Tested Lansing/Kansas City zones H-J
 Anchor Length 80 Drill Pipe Run 3162 Mud Wt. 9.2
 Top Packer Depth 3165 Drill Collars Run 0 Vis 5-1
 Bottom Packer Depth 3170 Wt. Pipe Run 0 WL 8.0
 Total Depth 3250 Chlorides 5700 ppm System LCM 0
 Blow Description Weak blow/Blow built to 4 1/2 inches
No blow back
Weak blow/Blow built to 4 inches

Rec	Feet of	%gas	%oil	%water	%mud
<u>15</u>	<u>mud with show of oil</u>				<u>100</u>
<u>45</u>	<u>gas in pipe</u>	<u>100</u>			

Rec Total 60 BHT 107 Gravity _____ API RW _____ @ _____ °F Chlorides _____ ppm

(A) Initial Hydrostatic <u>1620</u>	<input type="checkbox"/> Test <u>1150</u>	T-On Location <u>2:30 am</u>
(B) First Initial Flow <u>49</u>	<input type="checkbox"/> Jars _____	T-Started <u>3:13 am</u>
(C) First Final Flow <u>56</u>	<input type="checkbox"/> Safety Joint _____	T-Open <u>5:18 am</u>
(D) Initial Shut-In <u>95</u>	<input type="checkbox"/> Circ Sub _____	T-Pulled <u>8:18 am</u>
(E) Second Initial Flow <u>54</u>	<input type="checkbox"/> Hourly Standby _____	T-Out <u>9:35 am</u>
(F) Second Final Flow <u>58</u>	<input checked="" type="checkbox"/> Mileage <u>62</u> <u>96.10</u>	Comments _____
(G) Final Shut-In <u>130</u>	<input type="checkbox"/> Sampler _____	<input type="checkbox"/> Ruined Shale Packer _____
(H) Final Hydrostatic <u>1559</u>	<input type="checkbox"/> Straddle _____	<input type="checkbox"/> Ruined Packer _____
Initial Open <u>45</u>	<input type="checkbox"/> Shale Packer _____	<input type="checkbox"/> Extra Copies _____
Initial Shut-In <u>30</u>	<input type="checkbox"/> Extra Packer _____	Sub Total <u>0</u>
Final Flow <u>45</u>	<input type="checkbox"/> Extra Recorder _____	Total <u>1246.10</u>
Final Shut-In <u>60</u>	<input type="checkbox"/> Day Standby _____	MP/DST Disc't _____
	<input type="checkbox"/> Accessibility _____	
	Sub Total <u>1246.10</u>	

Approved By _____

Our Representative [Signature]

Trilobite Testing Inc. shall not be liable for damaged of any kind of the property or personnel of the one for whom a test is made, or for any loss suffered or sustained, directly or indirectly, through the use of its equipment, or its statements or opinion concerning the results of any test, tools lost or damaged in the hole shall be paid for at cost by the party for whom the test is made.



TRILOBITE TESTING INC.

1515 Commerce Parkway • Hays, Kansas 67601

Test Ticket

NO. 62039

Well Name & No. Oeser #2 Test No. 3 Date 19 Dec 14
 Company American Warrior Incorporated Elevation 1903 KB 1895 GL
 Address 3118 Cummings Road PO Box 399 Garden City, KS 67846
 Co. Rep / Geo. Jim Masgrove Rig Duke #8
 Location: Sec. 18 Twp. 16S Rge. 11W Co. Beaton State KS

Interval Tested 3301-3361 Zone Tested Arbuckle
 Anchor Length 60 Drill Pipe Run 3287 Mud Wt. 9.4
 Top Packer Depth 3296 Drill Collars Run 0 Vis 57
 Bottom Packer Depth 3301 Wt. Pipe Run 0 WL 8.0
 Total Depth 3361 Chlorides 6500 ppm System LCM 0

Blow Description Good blow/Blow built to bottom of bucket in 4 minutes 30 seconds
No blow back
Good blow/Blow built to bottom of bucket in 5 minutes
No blow back

Rec	Feet of	%gas	%oil	%water	%mud
<u>315</u>	<u>Watery mud with show of oil</u>			<u>30</u>	<u>70</u>
Rec	Feet of	%gas	%oil	%water	%mud
Rec	Feet of	%gas	%oil	%water	%mud
Rec	Feet of	%gas	%oil	%water	%mud
Rec	Feet of	%gas	%oil	%water	%mud

Rec Total 315 BHT 106 Gravity _____ API RW _____ @ _____ °F Chlorides 11,000 ppm

(A) Initial Hydrostatic 1688 Test 1150 T-On Location 1:30 am
 (B) First Initial Flow 58 Jars _____ T-Started 2:44 am
 (C) First Final Flow 128 Safety Joint _____ T-Open 4:50 am
 (D) Initial Shut-In 1097 Circ Sub _____ T-Pulled 5:55 am
 (E) Second Initial Flow 132 Hourly Standby _____ T-Out 7:44 am
 (F) Second Final Flow 190 Mileage 62 96.10 Comments _____
 (G) Final Shut-In 1102 Sampler _____
 (H) Final Hydrostatic 1605 Straddle _____
 Shale Packer _____
 Shale Packer _____
 Extra Packer _____
 Extra Recorder _____
 Day Standby _____
 Accessibility _____

Initial Open 10
 Initial Shut-In 15
 Final Flow 10
 Final Shut-In 30

Sub Total 1246.10
 Total 1246.10
 MP/DST Disc't _____

Approved By _____ Our Representative [Signature]

TriLOBITE TESTING INC. shall not be liable for damaged of any kind of the property or personnel of the one for whom a test is made, or for any loss suffered or sustained, directly or indirectly, through the use of its equipment, or its statements or opinion concerning the results of any test, tools lost or damaged in the hole shall be paid for at cost by the party for whom the test is made.