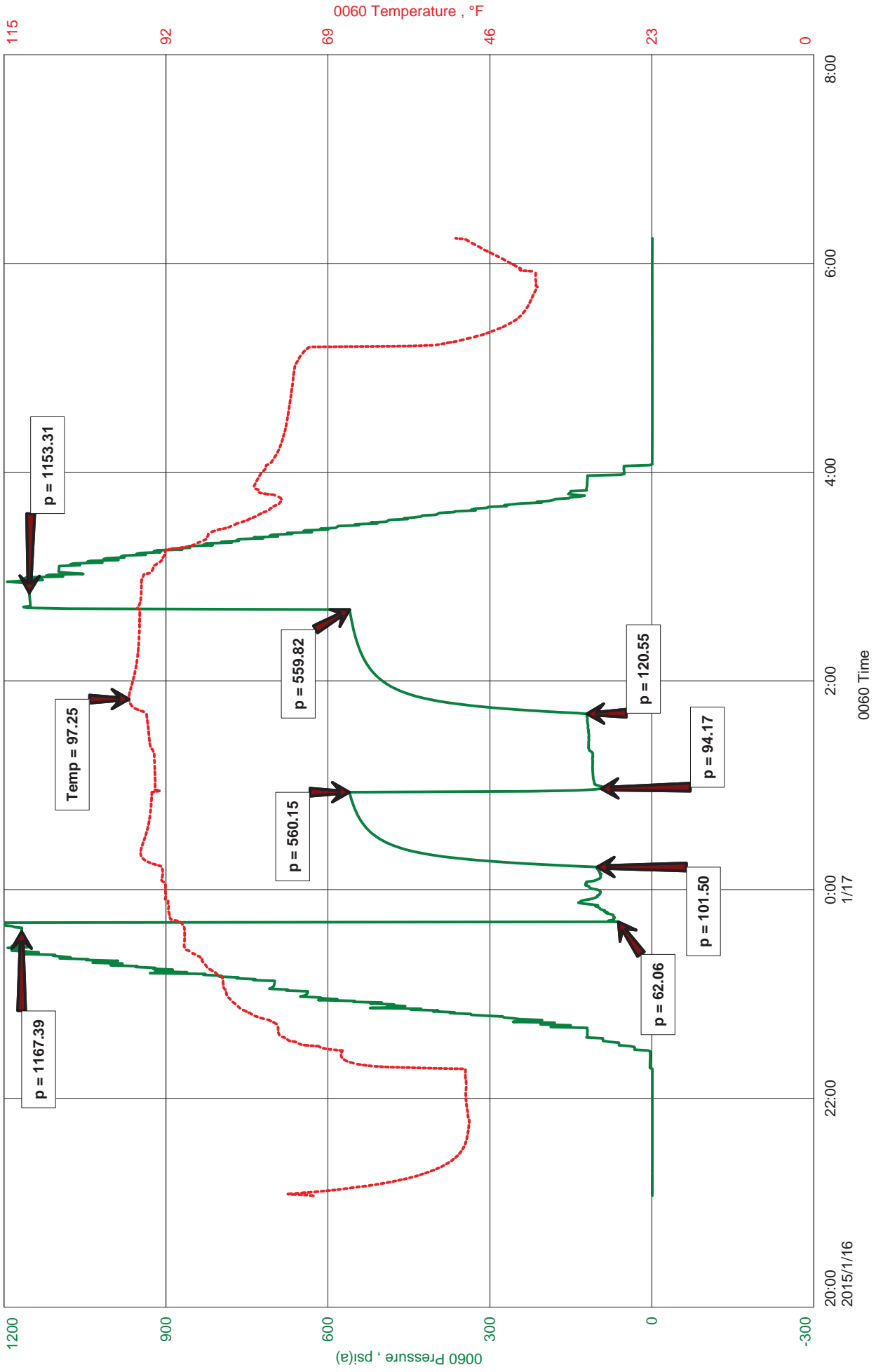
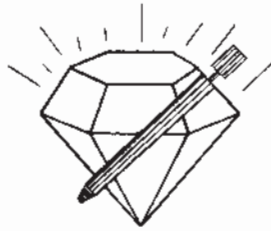


NOBLE PETROLEUM, INC
DST #1 - MISS - 2443 - 2530
Start Test Date: 2015/01/16
Final Test Date: 2015/01/17

SCULLY-CORP #1
Formation: DST #1 - MISS - 2443 - 2530
Pool: WILDCAT
Job Number: JB23

SCULLY-CORP #1





DIAMOND TESTING
 P. O. Box 157
HOISINGTON, KANSAS 67544
 (316) 653-7550
GAS VOLUME REPORT

Company NOBLE PETROLEUM, INC Lease & Well No. SCULLY-CORP #1
 Date 1-16-15 Sec. 27 Twp. 18S Rge. 2W Location _____ County MARION State KS
 Drilling Contractor C & G DRILLING, INC Formation MISS DST No. 1

Remarks: FIRST OPEN; GAS TO SURFACE IN 15 MIN
SECOND OPEN; BLEW IMMEDIATLY OF BOTTOM & GAS TO SURFACE

INITIAL FLOW

Time O'Clock	Orifice Size	Gauge	CF/D
30	1/4 in.	4 PSI in.	18.5
	in.	in.	
	in.	in.	
	in.	in.	
	in.	in.	
	in.	in.	
	in.	in.	
	in.	in.	
	in.	in.	
	in.	in.	

FINAL FLOW PSI

Time O'Clock	Orifice Size	Gauge	CF/D
2	1/4 in.	12 PSI in.	12.7
5	1/4 in.	17 PSI in.	42.4
10	1/4 in.	17.5 PSI in.	43.15
15	1/4 in.	17 PSI in.	42.4
20	1/4 in.	16 PSI in.	40.9
25	1/4 in.	15 PSI in.	39.2
30	1/4 in.	14.5 PSI in.	38.4
35	1/4 in.	14 PSI in.	37.6
40	1/4 in.	14 PSI in.	37.6
45	1/4 in.	13.5 PSI in.	36.75

*SAMPLE TAKEN

FINAL FLOW



Hoisington, Kansas

JEFF BROWN
620-617-6373
brown.dtlc@gmail.com

General Information

Company Name NOBLE PETROLEUM,INC

Test Information

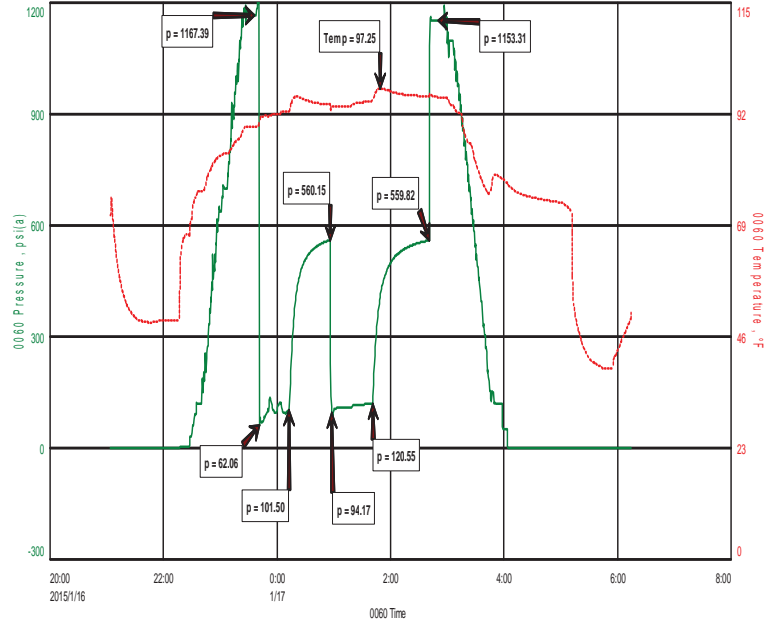
Contact
Well Name
Unique Well ID
Surface Location
Field
Well Operator
Test Type
Formation
Well Fluid Type
Test Purpose (AEUB)
Start Test Date
Start Test Time
Final Test Date
Final Test Time
Job Number
Representative
Prepared By
Report Date

JAY ABLAH
SCULLY-CORP #1
DST #1 - MISS - 2443 - 2530
SEC- 27-18S-2W - MARION, CNTY, KS
WILDCAT
NOBLE PETROLEUM,INC
Drill Stem Test
DST #1 - MISS - 2443 - 2530
01 Oil
Initial Test
2015/01/16
21:04:00
2015/01/17
06:15:00
JB23
JEFF BROWN
JEFF BROWN
2015/01/16

NOBLE PETROLEUM,INC
 DST #1 - MISS - 2443 - 2530
 Start Test Date: 2015/01/16
 Final Test Date: 2015/01/17

SCULLY-CORP #1
 Formation: DST #1 - MISS - 2443 - 2530
 Pool: WILDCAT
 Job Number: JB23

SCULLY-CORP #1



FLUID RECOVERY

FLUID RECOVERY; 302' OF MUD WITH OIL SPOTS
2109'- GIP

TOOL SAMPLE; VSOCGM - 2%O 3%G 95%M



DIAMOND TESTING
P.O. Box 157
HOISINGTON, KANSAS 67544
(800) 542-7313
DRILL-STEM TEST TICKET
FILE: SCULLY-CORP #1 DST1

TIME ON: 21:04
TIME OFF: 06:15

Company NOBLE PETROLEUM, INC Lease & Well No. SCULLY-CORP #1
Contractor C & G DRILLING, INC Charge to NOBLE PETROLEUM, INC
Elevation 1369 KB Formation MISS Effective Pay _____ Ft. Ticket No. JB23
Date 1-16-15 Sec. 27 Twp. _____ 18 S Range _____ 2 W County MARION State KANSAS
Test Approved By FRANK MIZE Diamond Representative JEFF BROWN

Formation Test No. 1 Interval Tested from 2443 ft. to 2530 ft. Total Depth 2530 ft.
Packer Depth 2438 ft. Size 6 3/4 in. Packer depth _____ ft. Size 6 3/4 in.
Packer Depth 2443 ft. Size 6 3/4 in. Packer depth _____ ft. Size 6 3/4 in.

Depth of Selective Zone Set _____
Top Recorder Depth (Inside) 2424 ft. Recorder Number 0060 Cap. 5,000 P.S.I.
Bottom Recorder Depth (Outside) 2512 ft. Recorder Number 5517 Cap. 5000 P.S.I.
Below Straddle Recorder Depth _____ ft. Recorder Number _____ Cap. _____ P.S.I.

Mud Type CHEMICAL Viscosity 34 Drill Collar Length 239 ft. I.D. 2 1/4 in.
Weight 9.5 Water Loss 11.6 cc. Weight Pipe Length 0 ft. I.D. 2 7/8 in.
Chlorides 1050 P.P.M. Drill Pipe Length 2172 ft. I.D. 3 1/2 in.
Jars: Make STERLING Serial Number 11 Test Tool Length 32 ft. Tool Size 3 1/2-IF in.
Did Well Flow? NO Reversed Out NO Anchor Length 87 ft. Size 4 1/2-FH in.
Main Hole Size 7 7/8 Tool Joint Size 4 1/2 XH in. Surface Choke Size 1 in. Bottom Choke Size 5/8 in.

Blow: 1st Open: STRONG BLOW BOB IN 1-1/4 MIN GAS TO SURFACE IN 15 MIN (HAMMER UNION ON HEAD UNSCREWED)
2nd Open: BLEW IMMEDIATLY OF BOTTOM & FAS TO SURFACE (WEAK SURFACE BLOW BACK)

Recovered <u>302</u> ft. of <u>MUD WITH OIL SPOTS</u>	
Recovered _____ ft. of <u>2109 - GIP</u>	
Recovered _____ ft. of _____	
Recovered _____ ft. of _____	
Recovered _____ ft. of _____	Price Job
Recovered _____ ft. of _____	Other Charges
Remarks: <u>TOTAL FLUID; 320' OF TOTAL FLUID</u>	Insurance
<u>TOOL SAMPLE: VSOCGM - 2%O 3%G 95%M</u>	Total

Time Set Packer(s) 11:41 P.M. ^{A.M.}/_{P.M.} Time Started Off Bottom 2:41 A.M. ^{A.M.}/_{P.M.} Maximum Temperature 97

Initial Hydrostatic Pressure..... (A) 1167 P.S.I.
Initial Flow Period..... Minutes 30 (B) 62 P.S.I. to (C) 102 P.S.I.
Initial Closed In Period..... Minutes 45 (D) 560 P.S.I.
Final Flow Period..... Minutes 45 (E) 94 P.S.I. to (F) 121 P.S.I.
Final Closed In Period..... Minutes 60 (G) 560 P.S.I.
Final Hydrostatic Pressure..... (H) 1153 P.S.I.

Diamond Testing shall not be liable for damages of any kind to the property or personnel of the one for whom a test is made or for any loss suffered or sustained, directly or indirectly, through the use of its equipment, or its statement or opinion concerning the result of any test. Tools lost or damaged in the hole shall be paid for at cost by the party for whom the test is made.