



**TRILOBITE TESTING, INC.**

# DRILL STEM TEST REPORT

Brungardt Oil & Leasing, Inc.

**22-11S-15W Russell, KS**

213 W 7th  
PO Box 871  
Russell, KS 67665  
ATTN: Roger Fischer

**Miller #1**

Job Ticket: 60923

**DST#: 3**

Test Start: 2014.10.20 @ 05:52:53

## GENERAL INFORMATION:

Formation: **Cong. Sand**

Deviated: No Whipstock: ft (KB)

Time Tool Opened: 07:43:53

Time Test Ended: 10:18:23

Test Type: Conventional Bottom Hole (Reset)

Tester: Brannan Lonsdale

Unit No: 62

**Interval: 3318.00 ft (KB) To 3340.00 ft (KB) (TVD)**

Reference Elevations: 1854.00 ft (KB)

Total Depth: 3340.00 ft (KB) (TVD)

1849.00 ft (CF)

Hole Diameter: 7.88 inches Hole Condition: Fair

KB to GR/CF: 5.00 ft

**Serial #: 8651**

**Inside**

Press@RunDepth: 430.86 psig @ 3319.00 ft (KB)

Capacity: 8000.00 psig

Start Date: 2014.10.20

End Date:

2014.10.20

Last Calib.: 2014.10.20

Start Time: 05:52:54

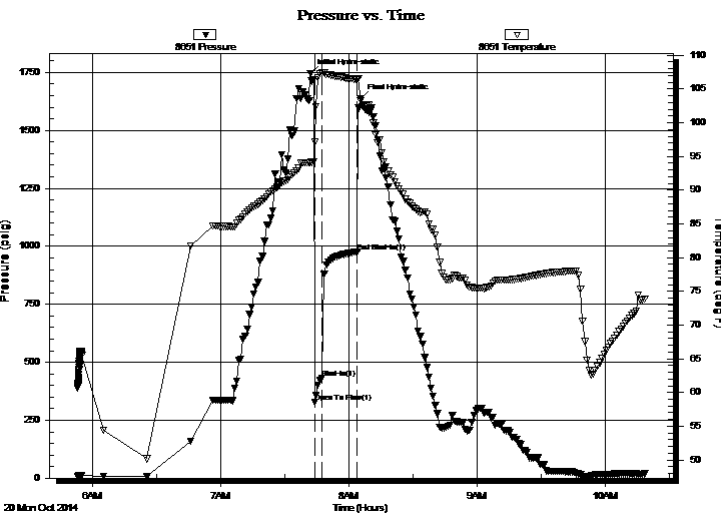
End Time:

10:18:23

Time On Btm: 2014.10.20 @ 07:41:53

Time Off Btm: 2014.10.20 @ 08:05:23

TEST COMMENT: 05- IF- BOB 10secs  
15- IS- Surface blow



## PRESSURE SUMMARY

Time (Min.)	Pressure (psig)	Temp (deg F)	Annotation
0	1746.34	94.10	Initial Hydro-static
2	327.65	97.11	Open To Flow (1)
6	430.86	107.34	Shut-In(1)
22	976.96	106.41	End Shut-In(1)
24	1637.56	103.31	Final Hydro-static

## Recovery

Length (ft)	Description	Volume (bbl)
80.00	CO	0.59
625.00	WO, 35%W 65%O	6.10

\* Recovery from multiple tests

## Gas Rates

Choke (inches)	Pressure (psig)	Gas Rate (Mcf/d)



**TRILOBITE  
TESTING, INC**

# DRILL STEM TEST REPORT

**FLUID SUMMARY**

Brungardt Oil & Leasing, Inc.

**22-11S-15W Russell, KS**

213 W 7th  
PO Box 871  
Russell, KS 67665  
ATTN: Roger Fischer

**Miller #1**

Job Ticket: 60923

**DST#: 3**

Test Start: 2014.10.20 @ 05:52:53

## Mud and Cushion Information

Mud Type: Gel Chem  
Mud Weight: 9.00 lb/gal  
Viscosity: 52.00 sec/qt  
Water Loss: 7.99 in<sup>3</sup>  
Resistivity: ohm.m  
Salinity: 6500.00 ppm  
Filter Cake: inches

Cushion Type:  
Cushion Length: ft  
Cushion Volume: bbl  
Gas Cushion Type:  
Gas Cushion Pressure: psig

Oil API: 27 deg API  
Water Salinity: ppm

## Recovery Information

Recovery Table

Length ft	Description	Volume bbl
80.00	CO	0.588
625.00	WO, 35%W 65%O	6.101

Total Length: 705.00 ft      Total Volume: 6.689 bbl

Num Fluid Samples: 0

Num Gas Bombs: 0

Serial #:

Laboratory Name:

Laboratory Location:

Recovery Comments:

### Pressure vs. Time

