



DRILL STEM TEST REPORT

Prepared For: **McCoy Petroleum Corporation**

9342 E Central
Wichita, KS 67206

ATTN: Dave Williams

HWY A #2-25

25-30s-19w Kiowa,KS

Start Date: 2014.11.11 @ 13:15:08

End Date: 2014.11.11 @ 21:37:38

Job Ticket #: 59884 DST #: 1

Trilobite Testing, Inc
1515 Commerce Parkway Hays, KS 67601
ph: 785-625-4778 fax: 785-625-5620

Printed: 2014.11.13 @ 16:35:13



**TRILOBITE
TESTING, INC**

DRILL STEM TEST REPORT

McCoy Petroleum Corporation

25-30s-19w Kiowa,KS

9342 E Central
Wichita, KS 67206

HWY A #2-25

Job Ticket: 59884

DST#: 1

ATTN: Dave Williams

Test Start: 2014.11.11 @ 13:15:08

GENERAL INFORMATION:

Formation: **Mississippi/Salem**

Deviated: No Whipstock: ft (KB)

Time Tool Opened: 16:15:53

Time Test Ended: 21:37:38

Test Type: Conventional Bottom Hole (Initial)

Tester: Leal Cason

Unit No: 74

Interval: 5090.00 ft (KB) To 5121.00 ft (KB) (TVD)

Reference Elevations: 2241.00 ft (KB)

Total Depth: 5121.00 ft (KB) (TVD)

2232.00 ft (CF)

Hole Diameter: 7.88 inches Hole Condition: Good

KB to GR/CF: 9.00 ft

Serial #: 6798

Inside

Press@RunDepth: 158.37 psig @ 5091.00 ft (KB)

Capacity: 8000.00 psig

Start Date: 2014.11.11

End Date:

2014.11.11

Last Calib.:

2014.11.11

Start Time: 13:15:09

End Time:

21:37:38

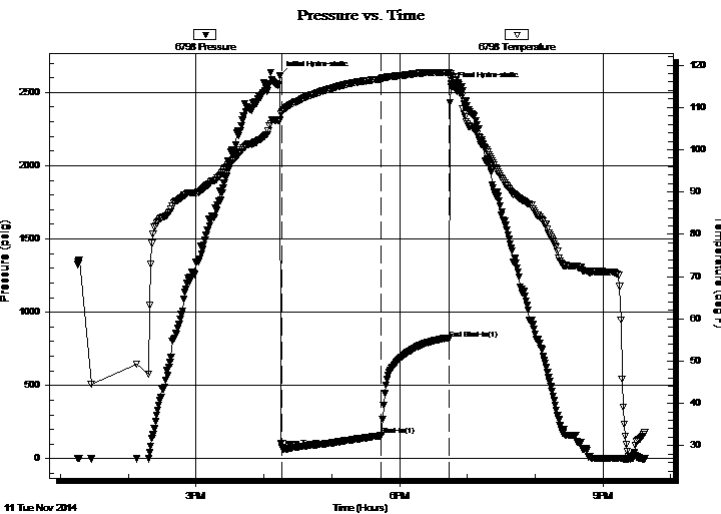
Time On Btm:

2014.11.11 @ 16:13:53

Time Off Btm:

2014.11.11 @ 18:45:38

TEST COMMENT: IF: Strong Blow , BOB in 20 seconds, GTS in 20 minutes, Gauged W/ Merla & Caught Sample, TSTM @ 50 minutes
IS: No Blow Back
Pulled Test



PRESSURE SUMMARY

Time (Min.)	Pressure (psig)	Temp (deg F)	Annotation
0	2612.16	107.01	Initial Hydro-static
2	75.89	108.99	Open To Flow (1)
90	158.37	116.69	Shut-In(1)
150	820.35	118.23	End Shut-In(1)
152	2540.42	117.61	Final Hydro-static

Recovery

Length (ft)	Description	Volume (bbl)
0.00	GTS	0.00
10.00	Water	0.05
114.00	GMOCW 20%G 25%M 25%O 30%W	1.42
186.00	GMWCO 10%G 6%M 12%W 72%O	2.61
62.00	GOCM 5%G 5%O 90%M	0.87

Gas Rates

	Choke (inches)	Pressure (psig)	Gas Rate (Mcf/d)
First Gas Rate	0.50	10.00	164.59
Last Gas Rate	0.25	5.00	30.78



**TRILOBITE
TESTING, INC**

DRILL STEM TEST REPORT

McCoy Petroleum Corporation

25-30s-19w Kiowa,KS

9342 E Central
Wichita, KS 67206

HWY A #2-25

Job Ticket: 59884

DST#: 1

ATTN: Dave Williams

Test Start: 2014.11.11 @ 13:15:08

GENERAL INFORMATION:

Formation: **Mississippi/Salem**

Deviated: No Whipstock: ft (KB)

Time Tool Opened: 16:15:53

Time Test Ended: 21:37:38

Test Type: Conventional Bottom Hole (Initial)

Tester: Leal Cason

Unit No: 74

Interval: **5090.00 ft (KB) To 5121.00 ft (KB) (TVD)**

Total Depth: 5121.00 ft (KB) (TVD)

Hole Diameter: 7.88 inches Hole Condition: Good

Reference Elevations: 2241.00 ft (KB)

2232.00 ft (CF)

KB to GR/CF: 9.00 ft

Serial #: 8367 Outside

Press@RunDepth: psig @ 5091.00 ft (KB)

Capacity: 8000.00 psig

Start Date: 2014.11.11

End Date: 2014.11.11

Last Calib.: 2014.11.11

Start Time: 13:15:09

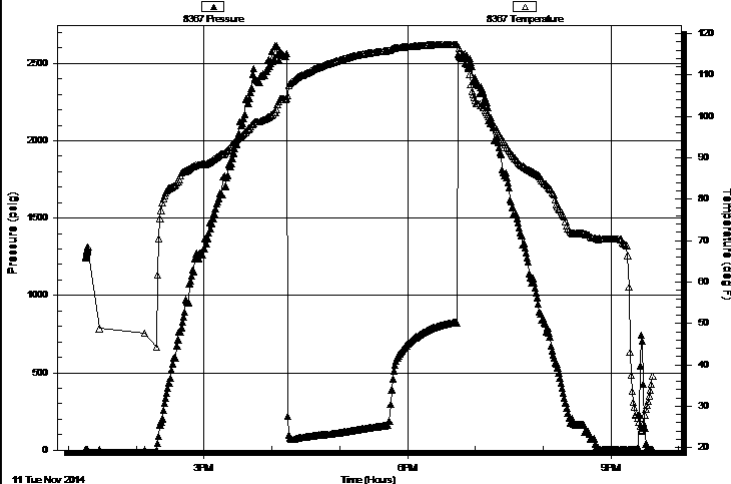
End Time: 21:37:23

Time On Btm:

Time Off Btm:

TEST COMMENT: IF: Strong Blow , BOB in 20 seconds, GTS in 20 minutes, Gauged W/ Merla & Caught Sample, TSTM @ 50 minutes
IS: No Blow Back
Pulled Test

Pressure vs. Time



PRESSURE SUMMARY

Time (Min.)	Pressure (psig)	Temp (deg F)	Annotation

Recovery

Length (ft)	Description	Volume (bbl)
0.00	GTS	0.00
10.00	Water	0.05
114.00	GMOCW 20%G 25%M 25%O 30%W	1.42
186.00	GMWCO 10%G 6%M 12%W 72%O	2.61
62.00	GOCM 5%G 5%O 90%M	0.87

Gas Rates

	Choke (inches)	Pressure (psig)	Gas Rate (Mcf/d)
First Gas Rate	0.50	10.00	164.59
Last Gas Rate	0.25	5.00	30.78



**TRILOBITE
TESTING, INC**

DRILL STEM TEST REPORT

TOOL DIAGRAM

McCoy Petroleum Corporation

25-30s-19w Kiowa,KS

9342 E Central
Wichita, KS 67206

HWY A #2-25

Job Ticket: 59884

DST#: 1

ATTN: Dave Williams

Test Start: 2014.11.11 @ 13:15:08

Tool Information

Drill Pipe:	Length: 5065.00 ft	Diameter: 3.80 inches	Volume: 71.05 bbl	Tool Weight: 2100.00 lb
Heavy Wt. Pipe:	Length: 0.00 ft	Diameter: 0.00 inches	Volume: 0.00 bbl	Weight set on Packer: 30000.00 lb
Drill Collar:	Length: 30.00 ft	Diameter: 2.25 inches	Volume: 0.15 bbl	Weight to Pull Loose: 95000.00 lb
			<u>Total Volume: 71.20 bbl</u>	Tool Chased ft
Drill Pipe Above KB:	31.00 ft			String Weight: Initial 70000.00 lb
Depth to Top Packer:	5090.00 ft			Final 70000.00 lb
Depth to Bottom Packer:	ft			
Interval between Packers:	31.00 ft			
Tool Length:	57.00 ft			
Number of Packers:	2	Diameter: 6.75 inches		

Tool Comments:

Tool Description	Length (ft)	Serial No.	Position	Depth (ft)	Accum. Lengths
------------------	-------------	------------	----------	------------	----------------

Shut In Tool	5.00			5069.00	
Hydraulic tool	5.00			5074.00	
Jars	5.00			5079.00	
Safety Joint	2.00			5081.00	
Packer	5.00			5086.00	26.00 Bottom Of Top Packer
Packer	4.00			5090.00	
Stubb	1.00			5091.00	
Recorder	0.00	6798	Inside	5091.00	
Recorder	0.00	8367	Outside	5091.00	
Perforations	27.00			5118.00	
Bullnose	3.00			5121.00	31.00 Bottom Packers & Anchor

Total Tool Length: 57.00



**TRILOBITE
TESTING, INC**

DRILL STEM TEST REPORT

FLUID SUMMARY

McCoy Petroleum Corporation

25-30s-19w Kiowa,KS

9342 E Central
Wichita, KS 67206

HWY A #2-25

Job Ticket: 59884

DST#: 1

ATTN: Dave Williams

Test Start: 2014.11.11 @ 13:15:08

Mud and Cushion Information

Mud Type: Gel Chem

Cushion Type:

Oil API:

deg API

Mud Weight: 9.00 lb/gal

Cushion Length:

ft

Water Salinity:

80000 ppm

Viscosity: 50.00 sec/qt

Cushion Volume:

bbbl

Water Loss: 4.00 in³

Gas Cushion Type:

Resistivity: ohm.m

Gas Cushion Pressure:

psig

Salinity: 10000.00 ppm

Filter Cake: 0.02 inches

Recovery Information

Recovery Table

Length ft	Description	Volume bbl
0.00	GTS	0.000
10.00	Water	0.049
114.00	GMOCW 20%G 25%M 25%O 30%W	1.417
186.00	GMWCO 10%G 6%M 12%W 72%O	2.609
62.00	GOCM 5%G 5%O 90%M	0.870

Total Length: 372.00 ft Total Volume: 4.945 bbl

Num Fluid Samples: 0

Num Gas Bombs: 0

Serial #:

Laboratory Name:

Laboratory Location:

Recovery Comments: RW w as .25 @ 28 degrees



**TRILOBITE
TESTING, INC.**

DRILL STEM TEST REPORT

GAS RATES

McCoy Petroleum Corporation

25-30s-19w Kiowa,KS

9342 E Central
Wichita, KS 67206

HWY A #2-25

Job Ticket: 59884

DST#: 1

ATTN: Dave Williams

Test Start: 2014.11.11 @ 13:15:08

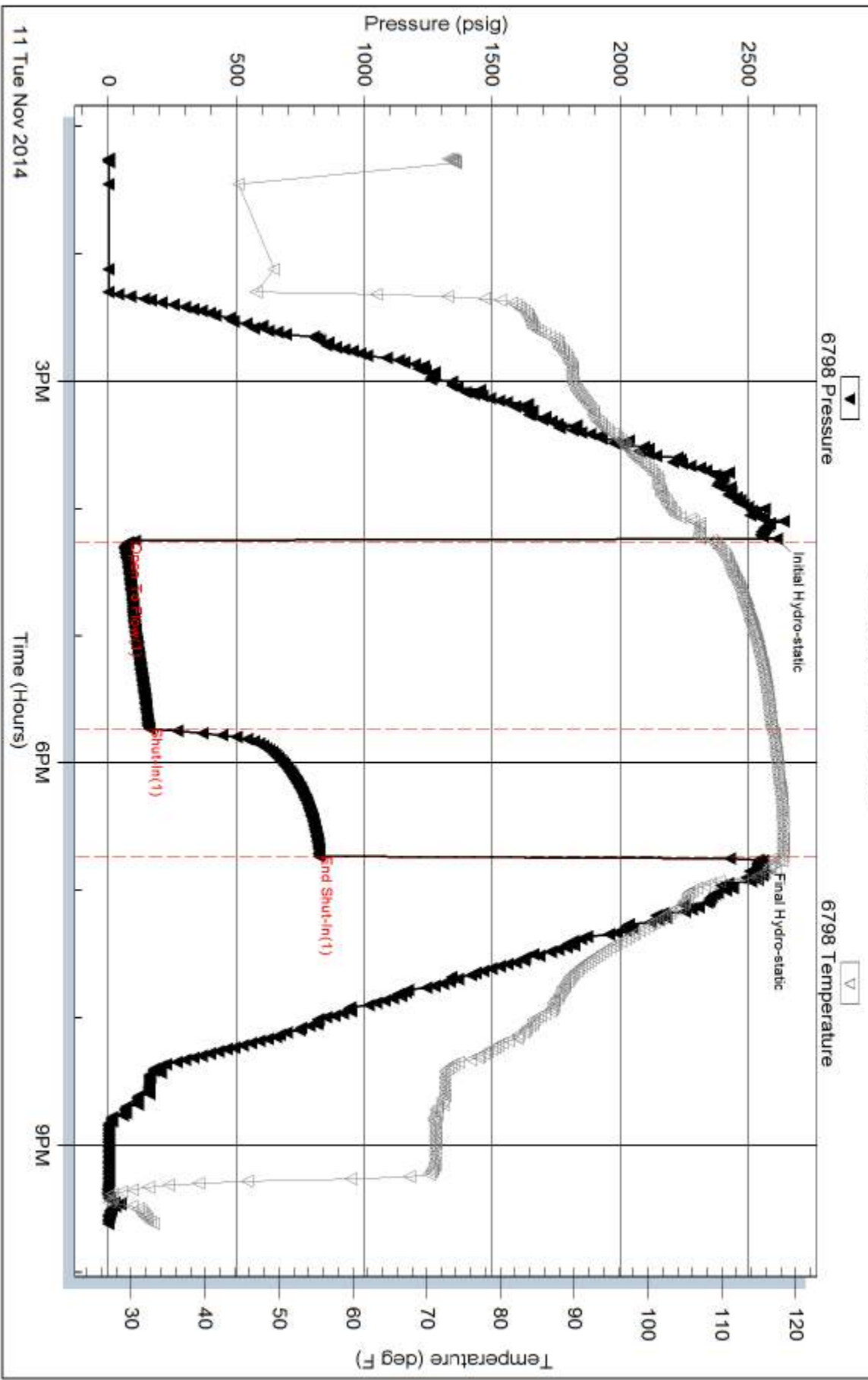
Gas Rates Information

Temperature: 59 (deg F)
Relative Density: 0.65
Z Factor: 0.8

Gas Rates Table

Flow Period	Elapsed Time	Choke (inches)	Pressure (psig)	Gas Rate (Mcf/d)
1	30	0.50	10.00	164.59
1	40	0.25	5.00	30.78

Pressure vs. Time

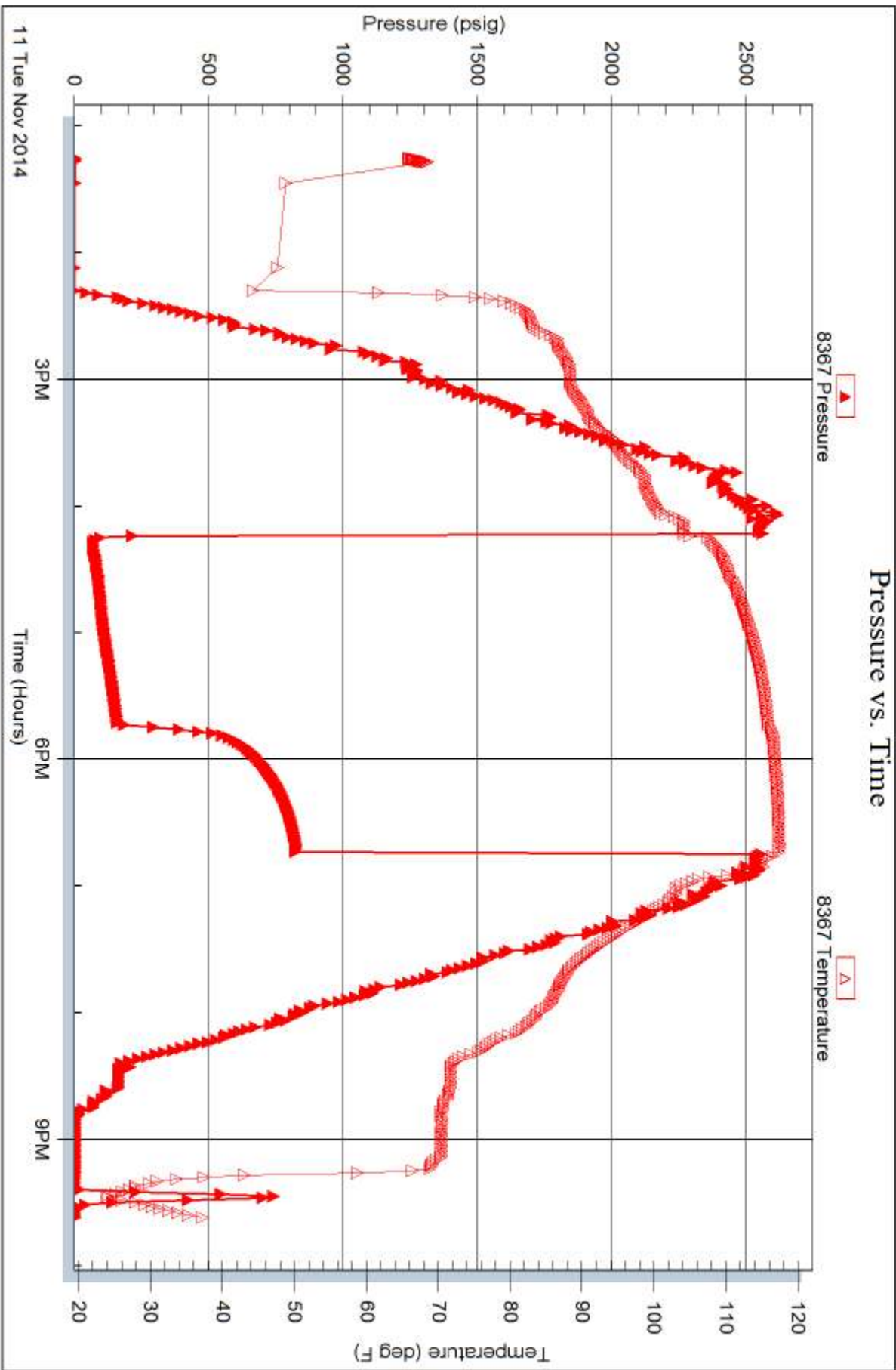


Serial #: 8367

Outside McCoy Petroleum Corporation

HWY A #2-25

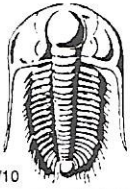
DST Test Number: 1



Trilobite Testing, Inc

Ref. No: 59884

Printed: 2014.11.13 @ 16:35:14



TRILOBITE TESTING INC.

1515 Commerce Parkway • Hays, Kansas 67601

Test Ticket

NO. 59884

Well Name & No. Hwy A 2-25 Test No. 1 Date 11/11/14
 Company McCoy Petroleum Corporation Elevation 2241 KB 2232 GL
 Address 9342 E Central Wichita, KS 67206
 Co. Rep / Geo. Dave Williams Rig Sterling 4
 Location: Sec. 25 Twp. 30S Rge. 19W Co. Kiowa State KS

Interval Tested 5090 - 5121 Zone Tested Mississippi/Salem
 Anchor Length 31 Drill Pipe Run 5065 Mud Wt. 9.3
 Top Packer Depth 5085 Drill Collars Run 30 Vis 50
 Bottom Packer Depth 5090 Wt. Pipe Run 0 WL 4.0
 Total Depth 5121 Chlorides 10000 ppm System LCM 2

Blow Description IFI Strong Blow, BOBIN 20sec, GTS in 20 minutes, Gauged & Caught sample
1STM @ 50 minutes
ISI: NO BLOW BACK

Rec	Feet of	%gas	%oil	%water	%mud
Rec <u>62</u>	Feet of <u>GOCM</u>	<u>5</u> %gas	<u>5</u> %oil	<u>90</u> %water	<u>90</u> %mud
Rec <u>186</u>	Feet of <u>G.M.WCO</u>	<u>10</u> %gas	<u>72</u> %oil	<u>12</u> %water	<u>6</u> %mud
Rec <u>114</u>	Feet of <u>G.MOCW</u>	<u>20</u> %gas	<u>25</u> %oil	<u>30</u> %water	<u>25</u> %mud
Rec <u>10</u>	Feet of <u>WATER</u>	%gas	%oil	%water	%mud
Rec Total <u>372</u>	BHT <u>118</u>	Gravity <u>N/C</u>	API RW <u>.25</u>	@ <u>28</u> °F	Chlorides <u>80,000</u> ppm

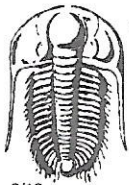
(A) Initial Hydrostatic 2612
 (B) First Initial Flow 76
 (C) First Final Flow 158
 (D) Initial Shut-In 820
 (E) Second Initial Flow N/A
 (F) Second Final Flow N/A
 (G) Final Shut-In N/A
 (H) Final Hydrostatic 2540
 Initial Open 90 @
 Initial Shut-In 60
 Final Flow N/A
 Final Shut-In N/A

Test 1350
 Jars 250
 Safety Joint 75
 Circ Sub
 Hourly Standby
 Mileage 100 155
 Sampler
 Straddle
 Shale Packer
 Extra Packer
 Extra Recorder
 Day Standby
 Accessibility
 Sub Total 1830

T-On Location 11:45
 T-Started 13:15
 T-Open 16:15
 T-Pulled 18:43
 T-Out 21:37
 Comments _____
 Ruined Shale Packer
 Ruined Packer
 Extra Copies
 Sub Total 0
 Total 1830
 MP/DST Disc't _____

Approved By Dave Williams

Our Representative _____



TRILOBITE TESTING INC.

1515 Commerce Parkway • Hays, Kansas 67601

Gas Volume Report

8/12

McCoy Petroleum

Hwy A 2-25

1

Operator
GTS 20 minutes

Well Name and No.

DST No.

Min.	Ins. of Water PSIG	Orifice Size	MCF/D	Min.	Ins. of Water PSIG	Orifice Size	CF/D
30	10	1/2	140.5 140.5				
40	5	1/4	28.9				
50	TSTM	1/8	TSTM				

Remarks: