



**TRILOBITE
TESTING, INC.**

DRILL STEM TEST REPORT

Samuel Gary Jr. & Associates

27/4s/34w Rawlins KS

1515 Wynkoop STE 700
Denver, CO 80202

Leebrick Farms #1-27

ATTN: Clayton Camozzi

Job Ticket: 60095

DST#: 2

Test Start: 2014.10.20 @ 15:41:00

GENERAL INFORMATION:

Formation: **LKC "F - G"**

Deviated: No Whipstock: ft (KB)

Time Tool Opened: 17:58:45

Time Test Ended: 22:58:15

Test Type: Conventional Bottom Hole (Reset)

Tester: James Winder

Unit No: 57

Interval: 4130.00 ft (KB) To 4184.00 ft (KB) (TVD)

Reference Elevations: 3167.00 ft (KB)

Total Depth: 4184.00 ft (KB) (TVD)

3162.00 ft (CF)

Hole Diameter: 7.88 inches Hole Condition: Fair

KB to GR/CF: 5.00 ft

Serial #: 8791

Inside

Press @ Run Depth: 232.39 psig @ 4131.00 ft (KB)

Capacity: 8000.00 psig

Start Date: 2014.10.20 End Date: 2014.10.20

Last Calib.: 2014.10.20

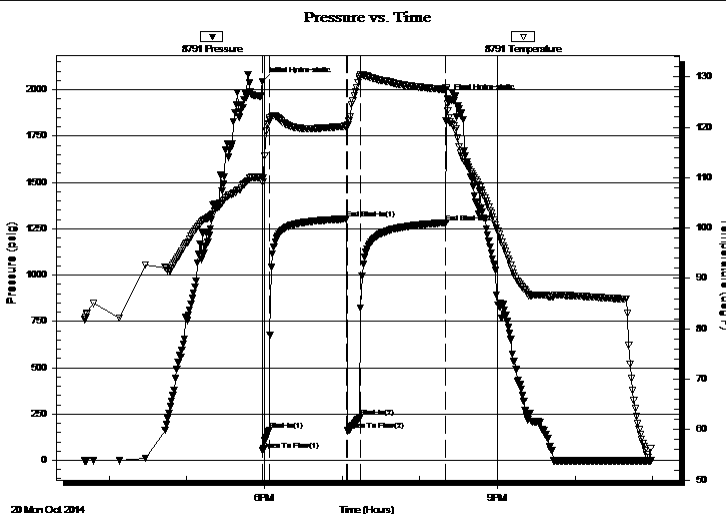
Start Time: 15:41:05 End Time: 22:58:14

Time On Btm: 2014.10.20 @ 17:58:30

Time Off Btm: 2014.10.20 @ 20:21:30

TEST COMMENT: 5 - IF: Blow built to BOB (11") at 5 min.
60 - IS: No blow back
10 - FF: Blow built to BOB at 5 1/4 min.
60 - FS: No blow back

PRESSURE SUMMARY



Time (Min.)	Pressure (psig)	Temp (deg F)	Annotation
0	2044.61	109.92	Initial Hydro-static
1	52.82	109.13	Open To Flow (1)
6	161.63	121.46	Shut-In(1)
65	1302.75	120.20	End Shut-In(1)
66	160.38	120.41	Open To Flow (2)
76	232.39	129.97	Shut-In(2)
142	1282.40	127.50	End Shut-In(2)
143	1952.64	123.34	Final Hydro-static

Recovery

Length (ft)	Description	Volume (bbl)
191.00	MCW w/trace oil 72%w, 28%m	0.98
254.00	WCM w/trace oil 65%m, 35%w	3.56
20.00	Mud w/trace oil 100%m	0.28

Gas Rates

	Choke (inches)	Pressure (psig)	Gas Rate (Mcf/d)

* Recovery from multiple tests



TRILOBITE TESTING, INC.

DRILL STEM TEST REPORT

Samuel Gary Jr. & Associates

27/4s/34w Rawlins KS

1515 Wynkoop STE 700
Denver, CO 80202

Leebrick Farms #1-27

Job Ticket: 60095

DST#: 2

ATTN: Clayton Camozzi

Test Start: 2014.10.20 @ 15:41:00

GENERAL INFORMATION:

Formation: **LKC "F - G"**

Deviated: No Whipstock: ft (KB)

Time Tool Opened: 17:58:45

Time Test Ended: 22:58:15

Test Type: Conventional Bottom Hole (Reset)

Tester: James Winder

Unit No: 57

Interval: 4130.00 ft (KB) To 4184.00 ft (KB) (TVD)

Reference Elevations: 3167.00 ft (KB)

Total Depth: 4184.00 ft (KB) (TVD)

3162.00 ft (CF)

Hole Diameter: 7.88 inches Hole Condition: Fair

KB to GR/CF: 5.00 ft

Serial #: 8320 Outside

Press @ Run Depth: psig @ 4131.00 ft (KB)

Capacity: 8000.00 psig

Start Date: 2014.10.20 End Date: 2014.10.20

Last Calib.: 2014.10.20

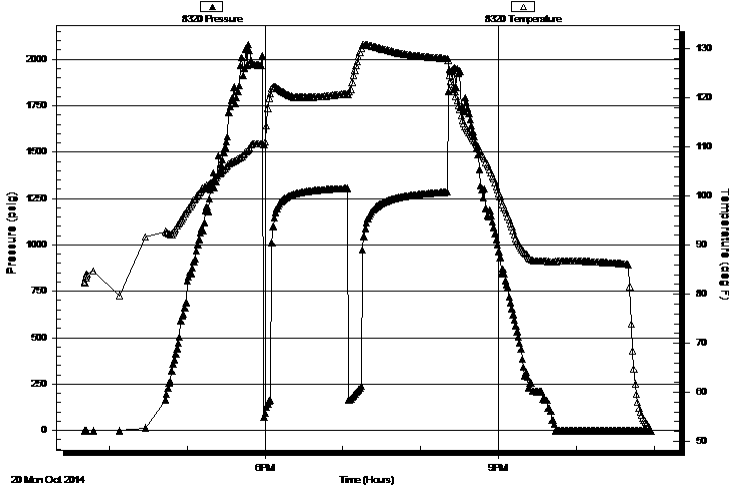
Start Time: 15:41:05 End Time: 22:57:29

Time On Btm:

Time Off Btm:

TEST COMMENT: 5 - IF: Blow built to BOB (11") at 5 min.
60 - IS: No blow back
10 - FF: Blow built to BOB at 5 1/4 min.
60 - FS: No blow back

Pressure vs. Time



PRESSURE SUMMARY

Time (Min.)	Pressure (psig)	Temp (deg F)	Annotation

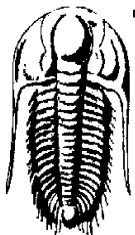
Recovery

Length (ft)	Description	Volume (bbl)
191.00	M CW w /trace oil 72%w, 28%m	0.98
254.00	WCM w /trace oil 65%m, 35%w	3.56
20.00	Mud w /trace oil 100%m	0.28

Gas Rates

	Choke (inches)	Pressure (psig)	Gas Rate (Mcf/d)

* Recovery from multiple tests



**TRILOBITE
TESTING, INC.**

DRILL STEM TEST REPORT

Samuel Gary Jr. & Associates

27/4s/34w Rawlins KS

1515 Wynkoop STE 700
Denver, CO 80202

Leebrick Farms #1-27

Job Ticket: 60095 **DST#: 2**

ATTN: Clayton Camozzi

Test Start: 2014.10.20 @ 15:41:00

GENERAL INFORMATION:

Formation: **LKC "F - G"**

Deviated: No Whipstock: ft (KB)

Time Tool Opened: 17:58:45

Time Test Ended: 22:58:15

Test Type: Conventional Bottom Hole (Reset)

Tester: James Winder

Unit No: 57

Interval: 4130.00 ft (KB) To 4184.00 ft (KB) (TVD)

Reference Elevations: 3167.00 ft (KB)

Total Depth: 4184.00 ft (KB) (TVD)

3162.00 ft (CF)

Hole Diameter: 7.88 inches Hole Condition: Fair

KB to GR/CF: 5.00 ft

Serial #: 8366

Fluid

Press @ Run Depth: psig @ 4095.00 ft (KB)

Capacity: 8000.00 psig

Start Date: 2014.10.20

End Date: 2014.10.20

Last Calib.: 2014.10.20

Start Time: 15:41:05

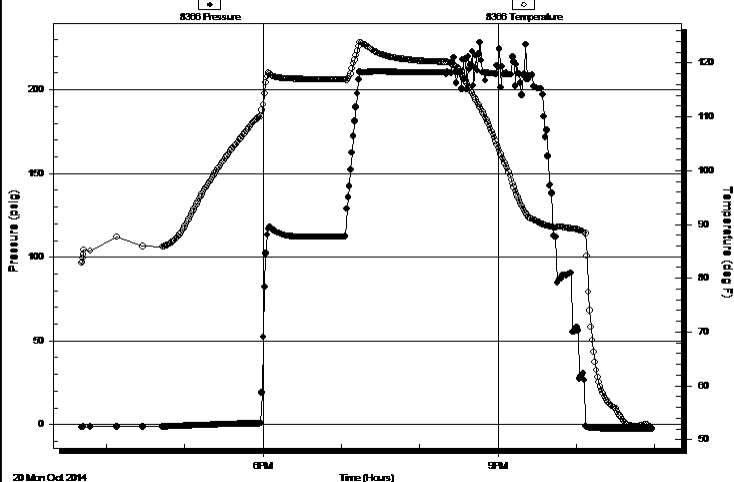
End Time: 22:58:44

Time On Btm:

Time Off Btm:

TEST COMMENT: 5 - IF: Blow built to BOB (11") at 5 min.
60 - IS: No blow back
10 - FF: Blow built to BOB at 5 1/4 min.
60 - FS: No blow back

Pressure vs. Time



PRESSURE SUMMARY

Time (Min.)	Pressure (psig)	Temp (deg F)	Annotation

Recovery

Length (ft)	Description	Volume (bbl)
191.00	MCW w/trace oil 72%w, 28%m	0.98
254.00	WCM w/trace oil 65%w, 35%w	3.56
20.00	Mud w/trace oil 100%w	0.28

Gas Rates

Choke (inches)	Pressure (psig)	Gas Rate (Mcf/d)

* Recovery from multiple tests



**TRILOBITE
TESTING, INC.**

DRILL STEM TEST REPORT

FLUID SUMMARY

Samuel Gary Jr. & Associates

27/4s/34w Rawlins KS

1515 Wynkoop STE 700
Denver, CO 80202

Leebrick Farms #1-27

Job Ticket: 60095

DST#: 2

ATTN: Clayton Camozzi

Test Start: 2014.10.20 @ 15:41:00

Mud and Cushion Information

Mud Type: Gel Chem

Cushion Type:

Oil API:

deg API

Mud Weight: 9.00 lb/gal

Cushion Length:

ft

Water Salinity:

48000 ppm

Viscosity: 54.00 sec/qt

Cushion Volume:

bbbl

Water Loss: 8.75 in³

Gas Cushion Type:

Resistivity: ohm.m

Gas Cushion Pressure:

psig

Salinity: 500.00 ppm

Filter Cake: 1.00 inches

Recovery Information

Recovery Table

Length ft	Description	Volume bbbl
191.00	MCW w/trace oil 72%w , 28%m	0.985
254.00	WCM w/trace oil 65%m, 35%w	3.563
20.00	Mud w/trace oil 100%m	0.281

Total Length: 465.00 ft Total Volume: 4.829 bbl

Num Fluid Samples: 0

Num Gas Bombs: 0

Serial #:

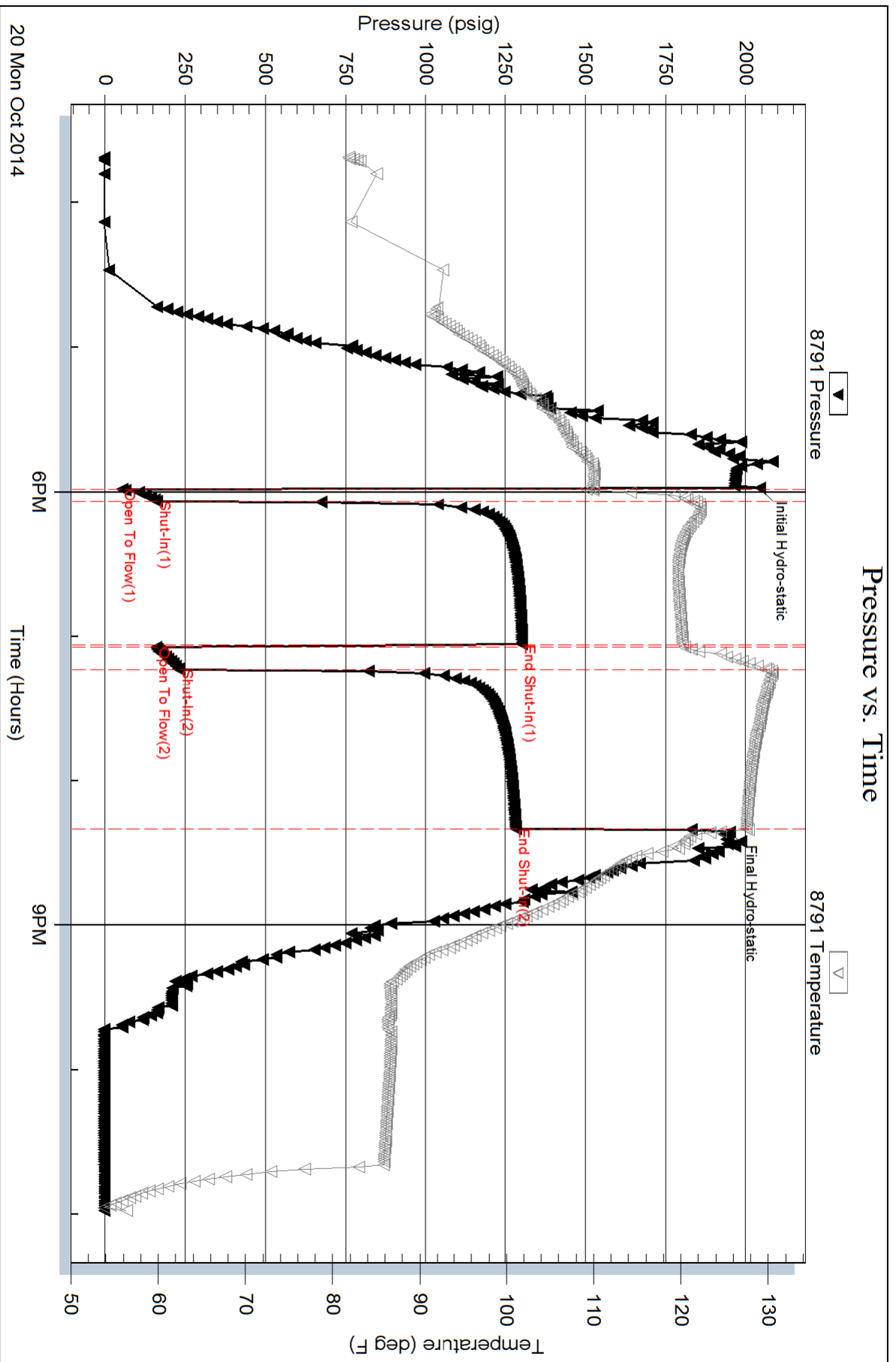
Laboratory Name:

Laboratory Location:

Recovery Comments: RW = . 197 ohms @ 55.7 deg F Chlorides = 48,000 ppm

Sampler = 230 PSI, 2500 mL Water 97%w , 3%m, RW = . 210 ohms @ 53.7 deg F Chlorides = 47,000 ppm

Pressure vs. Time

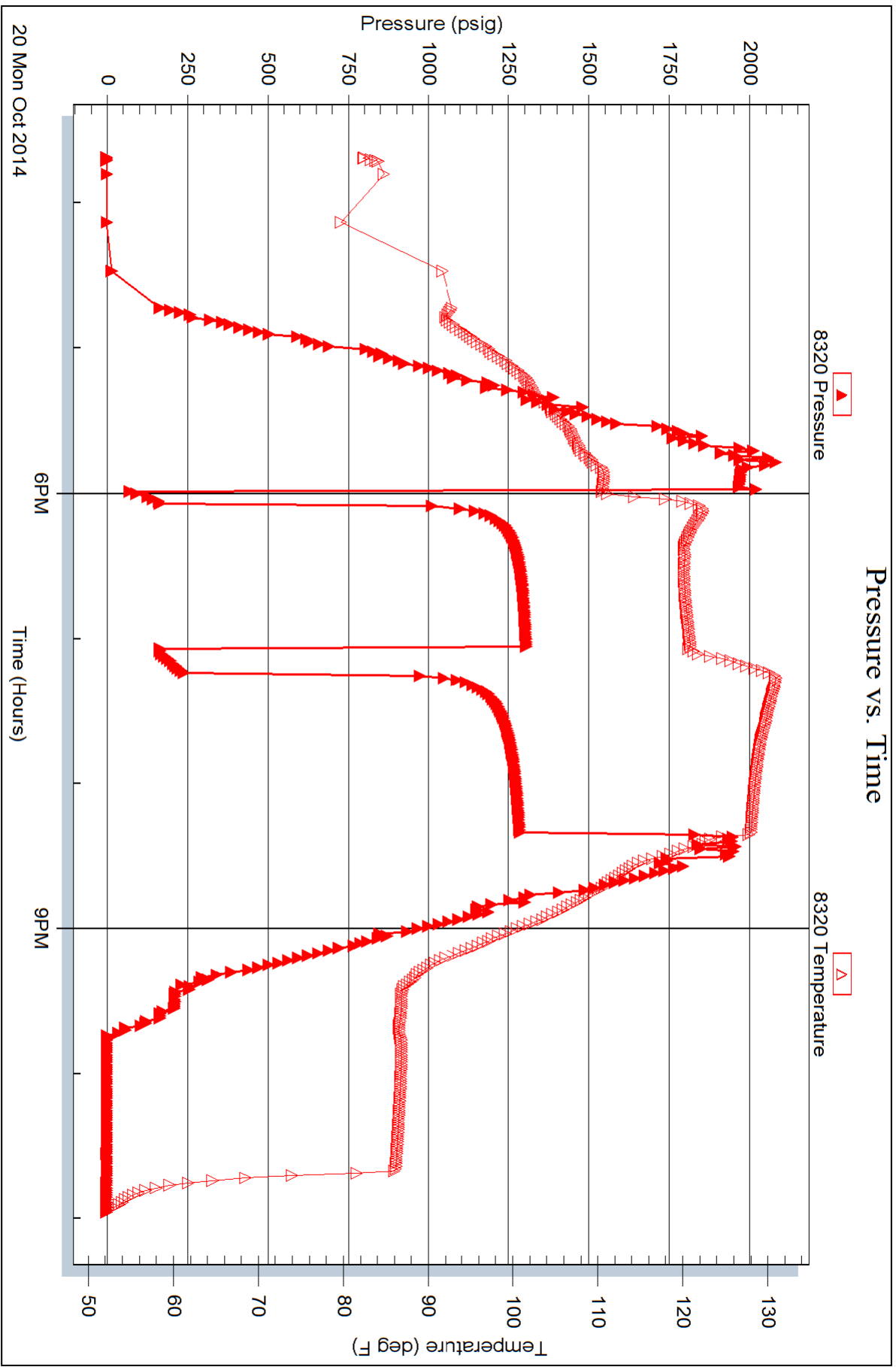


Serial #: 8320

Outside Samuel Gary Jr. & Associates

Leebrick Farms #1-27

DST Test Number: 2



Serial #: 8366

Fluid

Samuel Gary Jr. & Associates

Leebrick Farms #1-27

DST Test Number: 2

