



TRILOBITE TESTING, INC.

DRILL STEM TEST REPORT

Samuel Gary Jr. & Associates

27/4s/34w Rawlins KS

1515 Wynkoop STE 700
Denver, CO 80202

Leebrick Farms #1-27

ATTN: Clayton Camozzi

Job Ticket: 60096

DST#: 3

Test Start: 2014.10.21 @ 07:56:00

GENERAL INFORMATION:

Formation: **LKC "H"**

Deviated: No Whipstock: ft (KB)

Time Tool Opened: 10:40:30

Time Test Ended: 16:07:00

Test Type: Conventional Bottom Hole (Reset)

Tester: James Winder

Unit No: 57

Interval: 4184.00 ft (KB) To 4216.00 ft (KB) (TVD)

Reference Elevations: 3167.00 ft (KB)

Total Depth: 4216.00 ft (KB) (TVD)

3162.00 ft (CF)

Hole Diameter: 7.88 inches Hole Condition: Fair

KB to GR/CF: 5.00 ft

Serial #: 8791

Inside

Press@RunDepth: 519.05 psig @ 4185.00 ft (KB)

Capacity: 8000.00 psig

Start Date: 2014.10.21

End Date:

2014.10.21

Last Calib.:

2014.10.21

Start Time: 07:56:05

End Time:

16:06:59

Time On Btm:

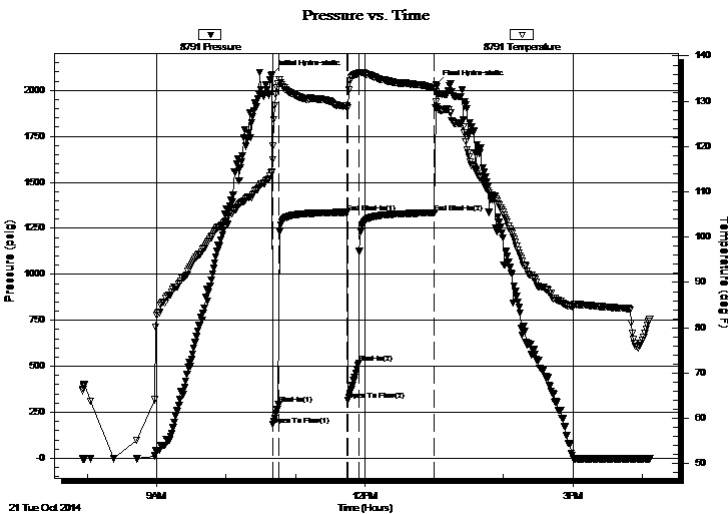
2014.10.21 @ 10:39:30

Time Off Btm:

2014.10.21 @ 13:01:45

TEST COMMENT: 5 - IF: Blow built to BOB (11") at 1 1/2 min.
60 - IS: Blow back built to 1 1/4"
10 - FF: Blow built to BOB at 2 min.
60 - FS: Blow back built to 1/4"

PRESSURE SUMMARY



Time (Min.)	Pressure (psig)	Temp (deg F)	Annotation
0	2083.02	114.48	Initial Hydro-static
1	182.45	120.06	Open To Flow (1)
6	292.13	133.94	Shut-In(1)
65	1336.54	128.90	End Shut-In(1)
66	316.46	128.63	Open To Flow (2)
76	519.05	136.09	Shut-In(2)
141	1334.12	132.89	End Shut-In(2)
143	2029.26	129.78	Final Hydro-static

Recovery

Length (ft)	Description	Volume (bbl)
635.00	SMCW 96%w, 4%m	7.21
380.00	MCW 61%w, 39%m	5.33
25.00	WCM 80%m, 20%w	0.35

* Recovery from multiple tests

Gas Rates

	Choke (inches)	Pressure (psig)	Gas Rate (Mcf/d)



**TRILOBITE
TESTING, INC**

DRILL STEM TEST REPORT

Samuel Gary Jr. & Associates

27/4s/34w Rawlins KS

1515 Wynkoop STE 700
Denver, CO 80202

Leebrick Farms #1-27

Job Ticket: 60096

DST#: 3

ATTN: Clayton Camozzi

Test Start: 2014.10.21 @ 07:56:00

GENERAL INFORMATION:

Formation: **LKC "H"**

Deviated: No Whipstock: ft (KB)

Time Tool Opened: 10:40:30

Time Test Ended: 16:07:00

Test Type: Conventional Bottom Hole (Reset)

Tester: James Winder

Unit No: 57

Interval: 4184.00 ft (KB) To 4216.00 ft (KB) (TVD)

Reference Elevations: 3167.00 ft (KB)

Total Depth: 4216.00 ft (KB) (TVD)

3162.00 ft (CF)

Hole Diameter: 7.88 inches Hole Condition: Fair

KB to GR/CF: 5.00 ft

Serial #: 8366 Fluid

Press@RunDepth: psig @ 4149.00 ft (KB)

Capacity: 8000.00 psig

Start Date: 2014.10.21

End Date:

2014.10.21

Last Calib.:

2014.10.21

Start Time: 07:56:05

End Time:

16:04:14

Time On Btm:

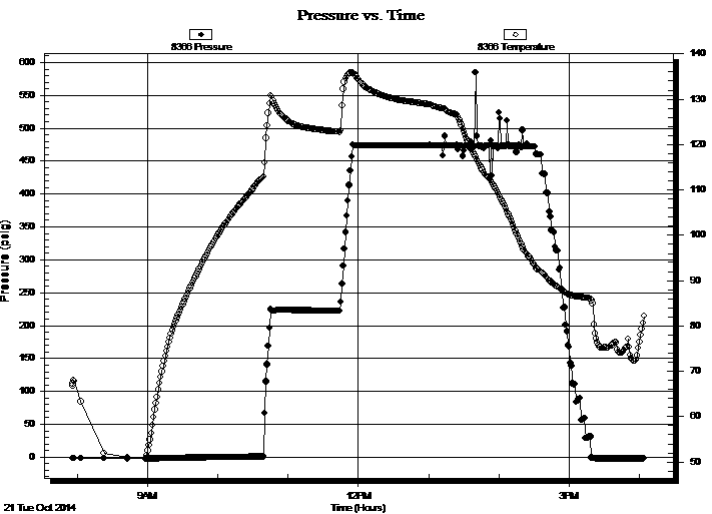
Time Off Btm:

TEST COMMENT: 5 - IF: Blow built to BOB (11") at 1 1/2 min.

60 - ISI: Blow back built to 1 1/4"

10 - FF: Blow built to BOB at 2 min.

60 - FS: Blow back built to 1/4"



PRESSURE SUMMARY

Time (Min.)	Pressure (psig)	Temp (deg F)	Annotation

Recovery

Gas Rates

Length (ft)	Description	Volume (bbl)
635.00	SMCW 96%w, 4%m	7.21
380.00	MCW 61%w, 39%m	5.33
25.00	WCM 80%m, 20%w	0.35

	Choke (inches)	Pressure (psig)	Gas Rate (Mcf/d)

* Recovery from multiple tests



**TRILOBITE
TESTING, INC**

DRILL STEM TEST REPORT

FLUID SUMMARY

Samuel Gary Jr. & Associates

27/4s/34w Rawlins KS

1515 Wynkoop STE 700
Denver, CO 80202

Leebrick Farms #1-27

Job Ticket: 60096

DST#: 3

ATTN: Clayton Camozzi

Test Start: 2014.10.21 @ 07:56:00

Mud and Cushion Information

Mud Type: Gel Chem

Cushion Type:

Oil API:

deg API

Mud Weight: 9.00 lb/gal

Cushion Length:

ft

Water Salinity:

44000 ppm

Viscosity: 55.00 sec/qt

Cushion Volume:

bbbl

Water Loss: 7.99 in³

Gas Cushion Type:

Resistivity: ohm.m

Gas Cushion Pressure:

psig

Salinity: 500.00 ppm

Filter Cake: 1.00 inches

Recovery Information

Recovery Table

Length ft	Description	Volume bbl
635.00	SMCW 96%w , 4%m	7.213
380.00	MCW 61%w , 39%m	5.330
25.00	WCM 80%m, 20%w	0.351

Total Length: 1040.00 ft Total Volume: 12.894 bbl

Num Fluid Samples: 0

Num Gas Bombs: 0

Serial #:

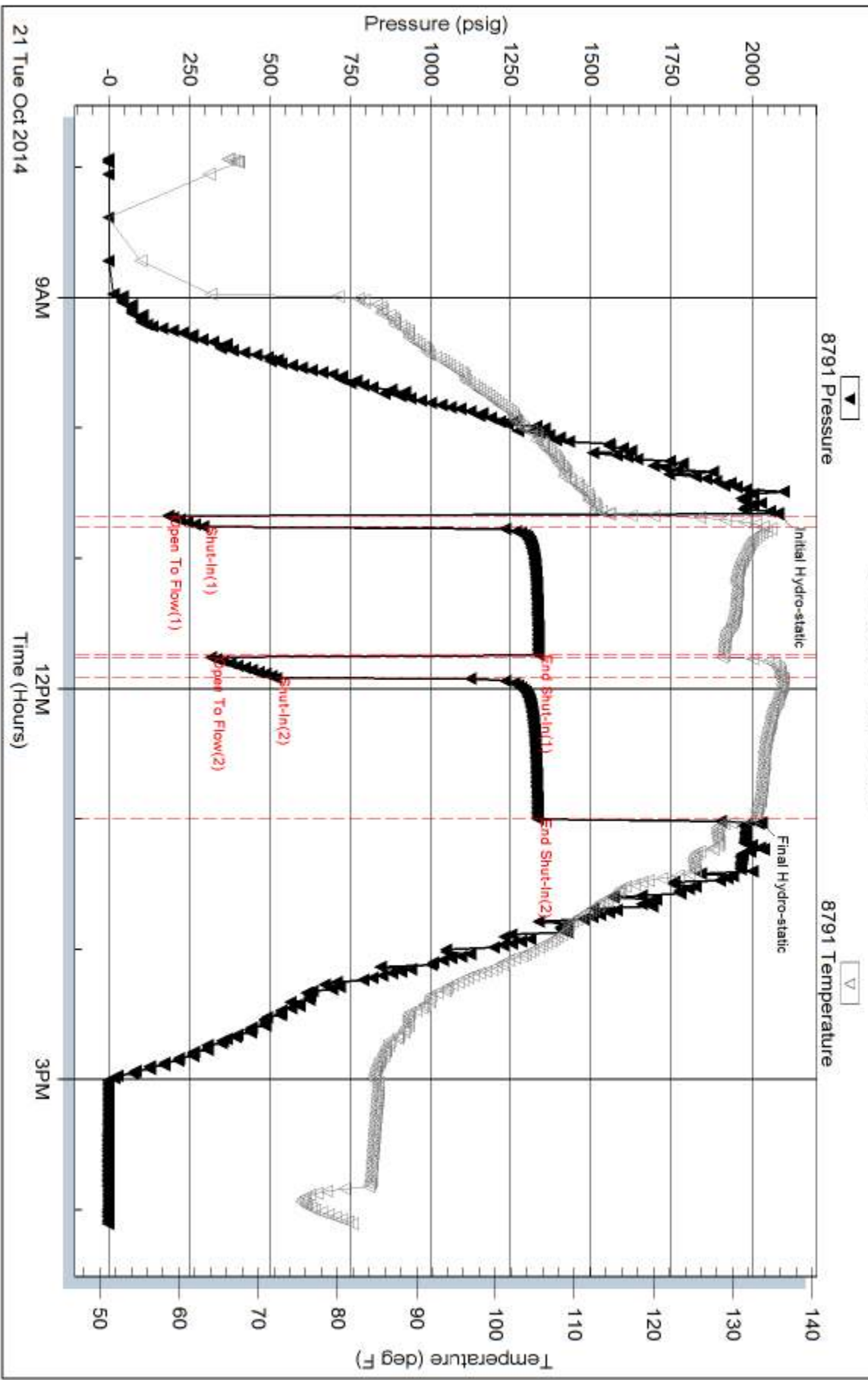
Laboratory Name:

Laboratory Location:

Recovery Comments: RW = .148 ohms @ 81.5 deg F Chlorides = 44,000 ppm

Sampler = 155 PSI, 2500 mL Water 99%w , 1%m, RW = .151 ohms @ 81.4 deg F Chlorides = 44,000 ppm

Pressure vs. Time



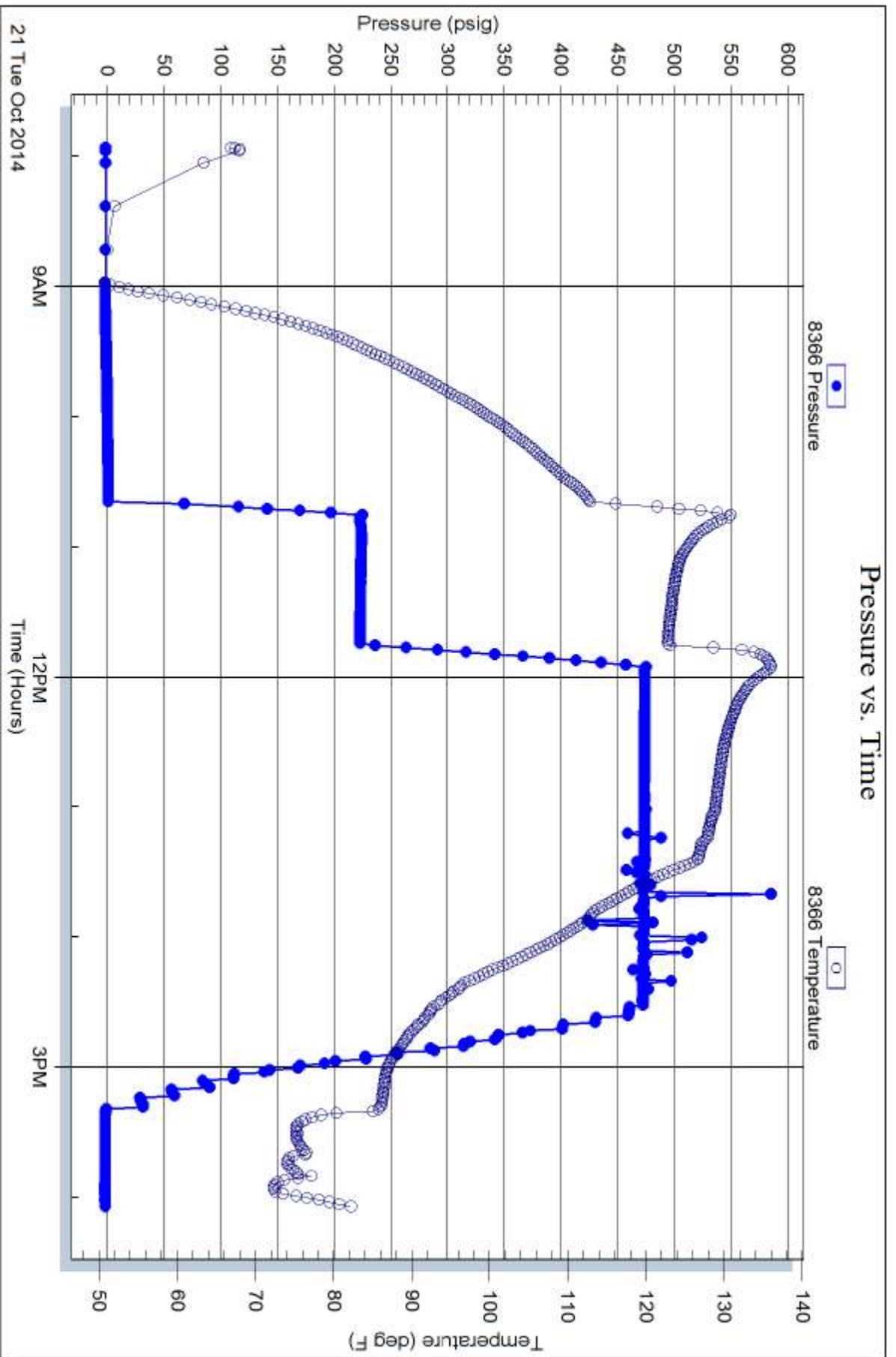
Serial #: 8366

Fluid

Samuel Gary J. & Associates

Leebrick Farms #1-27

DST Test Number: 3



Trilobite Testing, Inc

Ref. No: 60096

Printed: 2014, 10, 21 @ 17:04:04