



**TRILOBITE
TESTING, INC**

DRILL STEM TEST REPORT

Samuel Gary Jr. & Associates

27/4s/34w Rawlins KS

1515 Wynkoop STE 700
Denver, CO 80202

Leebrick Farms #1-27

Job Ticket: 60097

DST#: 4

ATTN: Clayton Camozzi

Test Start: 2014.10.23 @ 23:58:00

GENERAL INFORMATION:

Formation: **LKC "K"**

Deviated: No Whipstock: ft (KB)

Time Tool Opened: 02:16:00

Time Test Ended: 07:54:30

Test Type: Conventional Straddle (Reset)

Tester: James Winder

Unit No: 57

Interval: 4270.00 ft (KB) To 4286.00 ft (KB) (TVD)

Reference Elevations: 3167.00 ft (KB)

Total Depth: 4734.00 ft (KB) (TVD)

3162.00 ft (CF)

Hole Diameter: 7.88 inches Hole Condition: Fair

KB to GR/CF: 5.00 ft

Serial #: 8791

Inside

Press@RunDepth: 15.57 psig @ 4271.00 ft (KB)

Capacity: 8000.00 psig

Start Date: 2014.10.23

End Date:

2014.10.24

Last Calib.: 2014.10.24

Start Time: 23:58:05

End Time:

07:54:29

Time On Btm: 2014.10.24 @ 02:15:30

Time Off Btm: 2014.10.24 @ 05:19:30

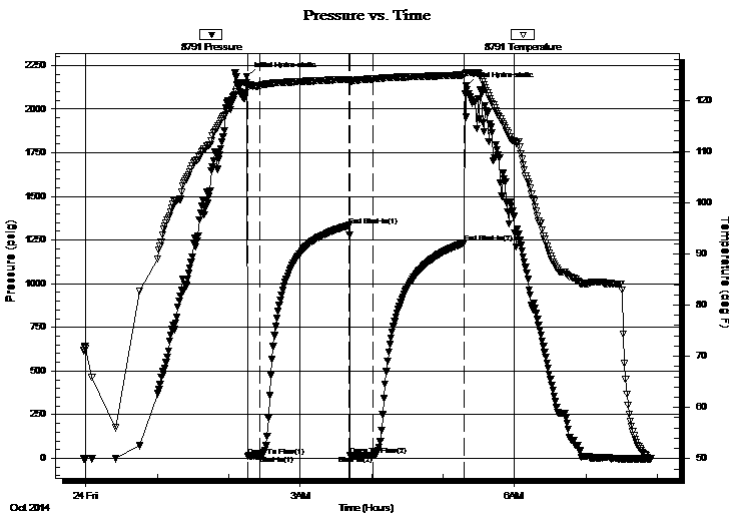
TEST COMMENT: 10 - IF: Blow built to 1/4"

75 - ISI: No blow back

20 - FF: No blow

75 - FSI: No blow back

PRESSURE SUMMARY



Time (Min.)	Pressure (psig)	Temp (deg F)	Annotation
0	2186.51	123.42	Initial Hydro-static
1	12.78	122.71	Open To Flow (1)
11	15.40	122.80	Shut-In(1)
86	1333.70	124.08	End Shut-In(1)
86	16.12	123.64	Open To Flow (2)
106	15.57	124.15	Shut-In(2)
182	1235.13	124.93	End Shut-In(2)
184	2131.55	125.43	Final Hydro-static

Recovery

Length (ft)	Description	Volume (bbl)
3.00	Mud 100%	0.01

* Recovery from multiple tests

Gas Rates

Choke (inches)	Pressure (psig)	Gas Rate (Mcf/d)



**TRILOBITE
TESTING, INC**

DRILL STEM TEST REPORT

Samuel Gary Jr. & Associates

27/4s/34w Rawlins KS

1515 Wynkoop STE 700
Denver, CO 80202

Leebrick Farms #1-27

ATTN: Clayton Camozzi

Job Ticket: 60097

DST#: 4

Test Start: 2014.10.23 @ 23:58:00

GENERAL INFORMATION:

Formation: **LKC "K"**

Deviated: No Whipstock: ft (KB)

Time Tool Opened: 02:16:00

Time Test Ended: 07:54:30

Test Type: Conventional Straddle (Reset)

Tester: James Winder

Unit No: 57

Interval: 4270.00 ft (KB) To 4286.00 ft (KB) (TVD)

Reference Elevations: 3167.00 ft (KB)

Total Depth: 4734.00 ft (KB) (TVD)

3162.00 ft (CF)

Hole Diameter: 7.88 inches Hole Condition: Fair

KB to GR/CF: 5.00 ft

Serial #: 8366 Fluid

Press@RunDepth: psig @ 4235.00 ft (KB)

Capacity: 8000.00 psig

Start Date: 2014.10.23

End Date:

2014.10.24

Last Calib.:

2014.10.24

Start Time: 23:58:05

End Time:

07:54:29

Time On Btm:

Time Off Btm:

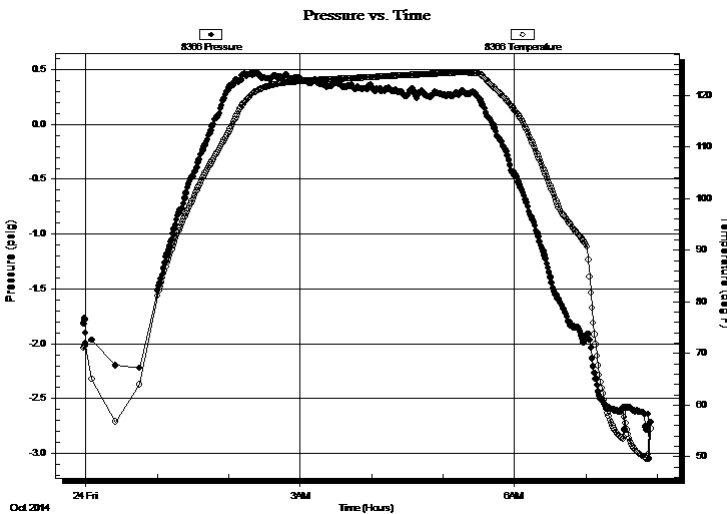
TEST COMMENT: 10 - IF: Blow built to 1/4"

75 - IS: No blow back

20 - FF: No blow

75 - FS: No blow back

PRESSURE SUMMARY



Time (Min.)	Pressure (psig)	Temp (deg F)	Annotation

Recovery

Length (ft)	Description	Volume (bbl)
3.00	Mud 100%	0.01

Gas Rates

Choke (inches)	Pressure (psig)	Gas Rate (Mcf/d)

* Recovery from multiple tests



**TRILOBITE
TESTING, INC**

DRILL STEM TEST REPORT

FLUID SUMMARY

Samuel Gary Jr. & Associates

27/4s/34w Rawlins KS

1515 Wynkoop STE 700
Denver, CO 80202

Leebrick Farms #1-27

Job Ticket: 60097

DST#: 4

ATTN: Clayton Camozzi

Test Start: 2014.10.23 @ 23:58:00

Mud and Cushion Information

Mud Type: Gel Chem

Cushion Type:

Oil API:

deg API

Mud Weight: 9.00 lb/gal

Cushion Length:

ft

Water Salinity:

ppm

Viscosity: 62.00 sec/qt

Cushion Volume:

bbbl

Water Loss: 9.38 in³

Gas Cushion Type:

Resistivity: ohm.m

Gas Cushion Pressure:

psig

Salinity: 500.00 ppm

Filter Cake: 1.00 inches

Recovery Information

Recovery Table

Length ft	Description	Volume bbl
3.00	Mud 100%	0.015

Total Length: 3.00 ft Total Volume: 0.015 bbl

Num Fluid Samples: 0

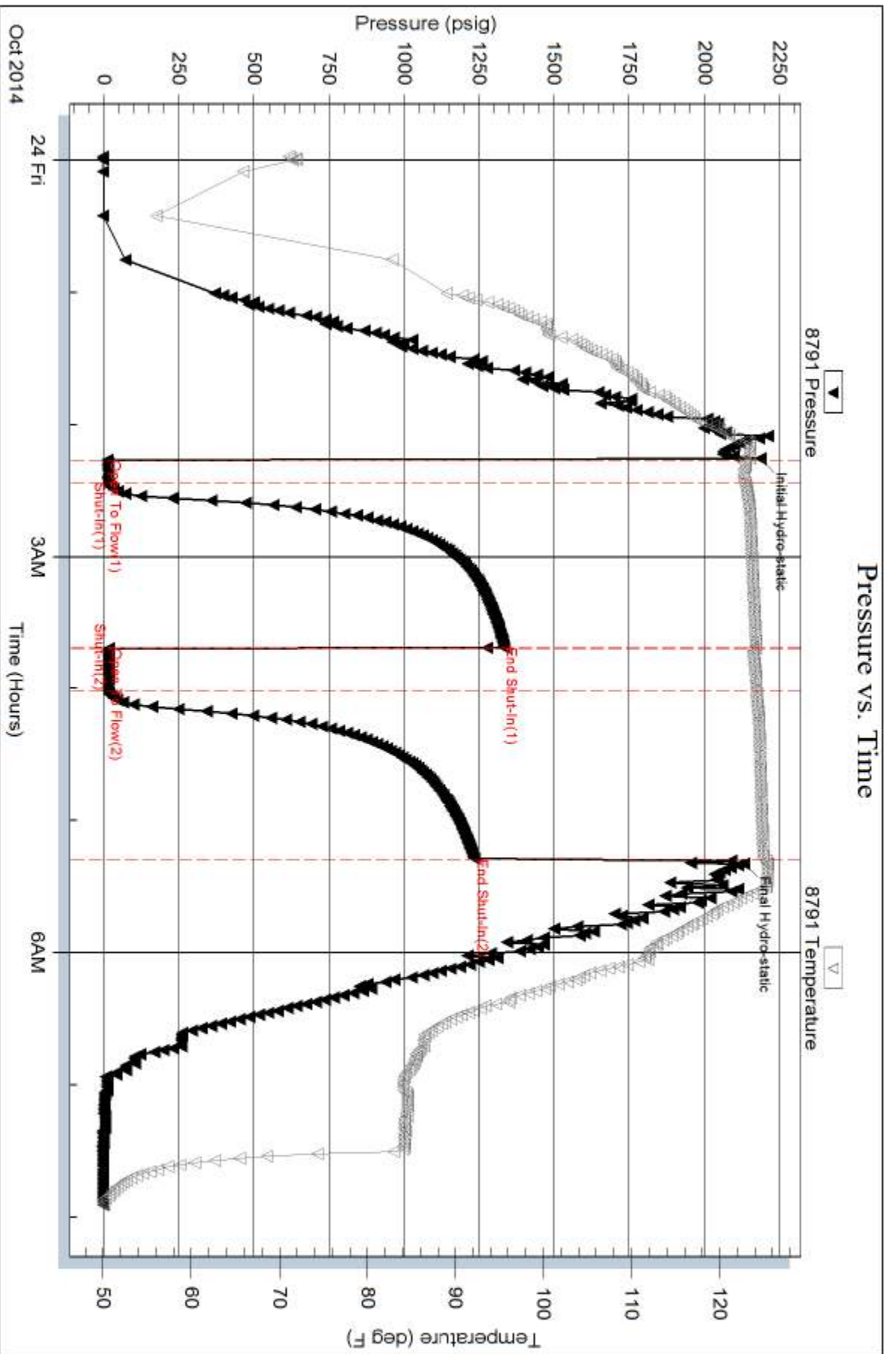
Num Gas Bombs: 0

Serial #:

Laboratory Name:

Laboratory Location:

Recovery Comments: Sampler = 90 PSI, 1000 mL mud 100% m



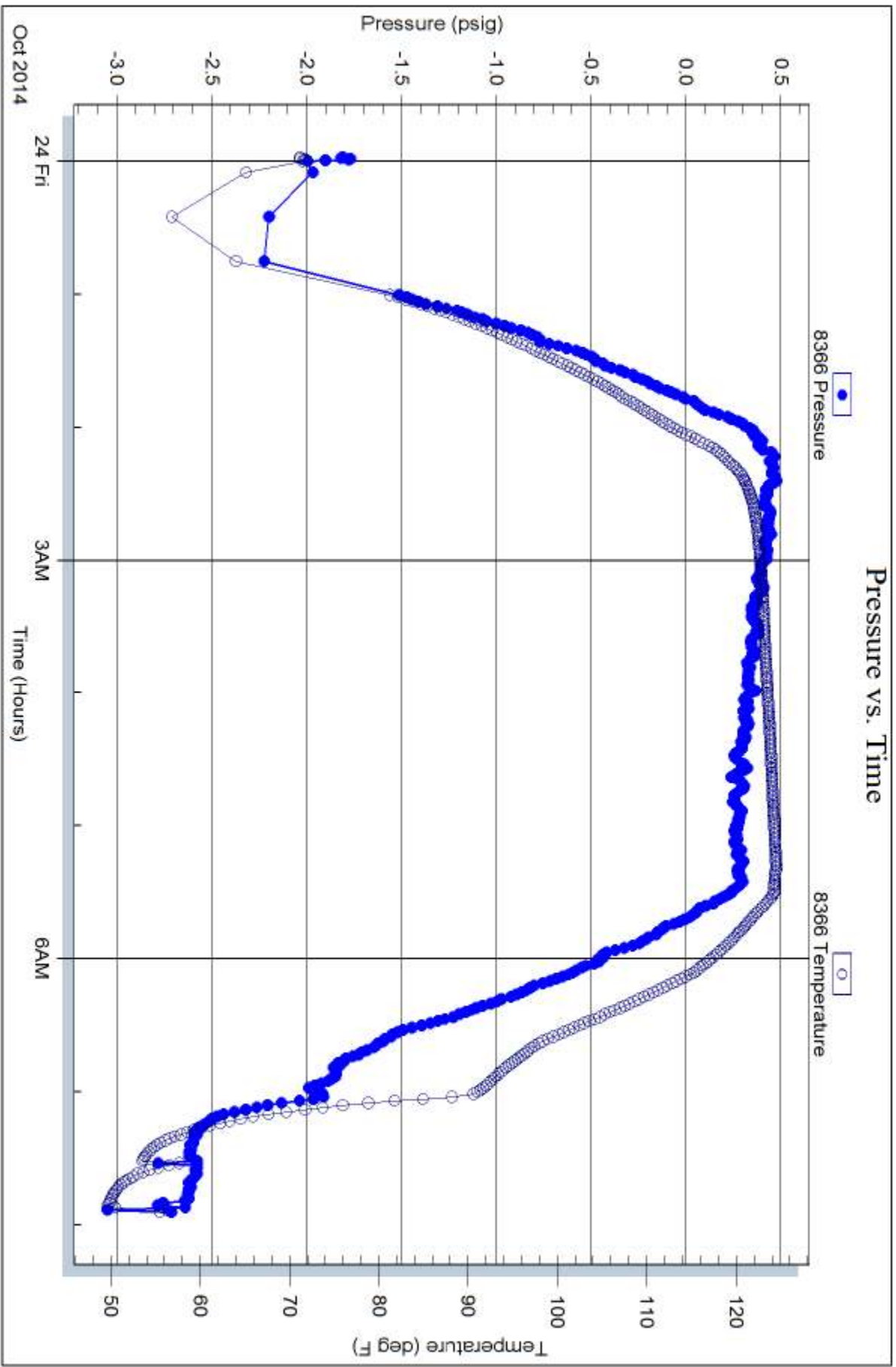
Serial #: 8366

Fluid

Samuel Gary Jr. & Associates

Leebrick Farms #1-27

DST Test Number: 4



Trilobite Testing, Inc

Ref. No: 60097

Printed: 2014, 10, 24 @ 08:36:43

