

DRILL STEM TEST REPORT

Prepared For: **Raydon Exploration, Inc**

1601 NW Expressway
Ste.#1300
Oklahoma City, OK 73118

ATTN: Ed Grieves

Parity #3-34

34-33s-31w-Seward,KS

Start Date: 2014.12.17 @ 00:36:00

End Date: 2014.12.17 @ 14:31:15

Job Ticket #: 56586 DST #: 1

Trilobite Testing, Inc

1515 Commerce Parkway Hays, KS 67601

ph: 785-625-4778 fax: 785-625-5620

Printed: 2014.12.23 @ 09:56:22

Raydon Exploration, Inc 34-33s-31w-Seward,KS Parity #3-34 DST # 1 LKC 'A' 2014.12.17



**TRILOBITE
TESTING, INC.**

DRILL STEM TEST REPORT

Raydon Exploration, Inc
1601 NW Expressway
Ste.#1300
Oklahoma City, OK 73118
ATTN: Ed Grieves

34-33s-31w-Seward,KS

Parity #3-34

Job Ticket: 56586

DST#: 1

Test Start: 2014.12.17 @ 00:36:00

GENERAL INFORMATION:

Formation: **LKC 'A'**

Deviated: No Whipstock: ft (KB)

Time Tool Opened:

Time Test Ended: 14:31:15

Test Type: Conventional Bottom Hole (Initial)

Tester: Cornello Landa III

Unit No: 44

Interval: **4445.00 ft (KB) To 4456.00 ft (KB) (TVD)**

Reference Elevations: 2734.00 ft (KB)

Total Depth: 4456.00 ft (KB) (TVD)

2724.00 ft (CF)

Hole Diameter: 7.88 inches Hole Condition: Good

KB to GR/CF: 10.00 ft

Serial #: 8968

Outside

Press@RunDepth: psig @ 4446.00 ft (KB)

Capacity: 8000.00 psig

Start Date: 2014.12.17

End Date: 2014.12.17

Last Calib.: 2014.12.17

Start Time: 00:36:05

End Time: 14:31:15

Time On Btm: 2014.12.17 @ 07:53:00

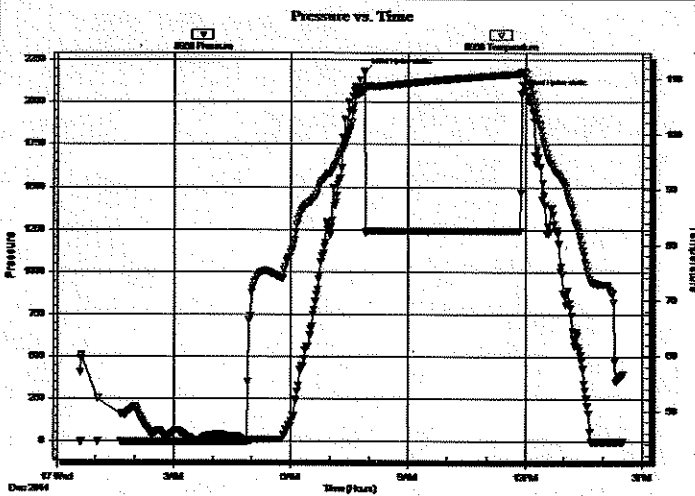
Time Off Btm: 2014.12.17 @ 11:54:15

TEST COMMENT: IF: Weak surface blow -Built to 1/4". -Died back to Weak surface blow

IS: No return

FF: No blow

FS: No return



PRESSURE SUMMARY

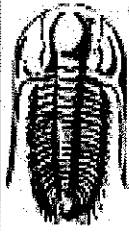
Time (Min.)	Pressure (psig)	Temp (deg F)	Annotation
0	2179.97	108.12	Initial Hydro-static
242	2051.22	111.28	Final Hydro-static

Recovery

Length (ft)	Description	Volume (bbl)
5.00	Mud 100m	0.02

Gas Rates

Choke (inches)	Pressure (psig)	Gas Rate (Mcf/d)



**TRILOBITE
TESTING, INC**

DRILL STEM TEST REPORT

Raydon Exploration, Inc

34-33s-31w-Seward,KS

1601 NW Expressway
Ste.#1300
Oklahoma City, OK 73118
ATTN: Ed Grieves

Parity #3-34

Job Ticket: 56586

DST#: 1

Test Start: 2014.12.17 @ 00:36:00

GENERAL INFORMATION:

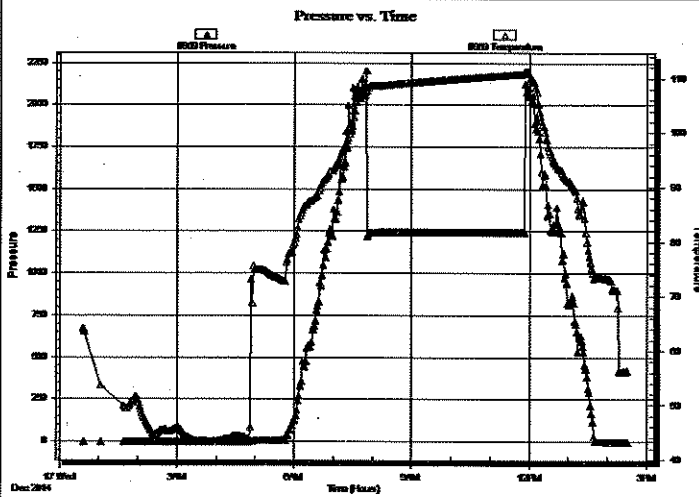
Formation: **LKC 'A'**
 Deviated: No Whipstock: ft (KB)
 Test Type: Conventional Bottom Hole (Initial)
 Time Tool Opened:
 Tester: Cornelio Landa III
 Time Test Ended: 14:31:15
 Unit No: 44
 Interval: **4445.00 ft (KB) To 4456.00 ft (KB) (TVD)**
 Reference Elevations: 2734.00 ft (KB)
 Total Depth: 4456.00 ft (KB) (TVD)
 2724.00 ft (CF)
 Hole Diameter: 7.88 inches Hole Condition: Good
 KB to GR/CF: 10.00 ft

Serial #: 8969

Inside

Press@RunDepth: psig @ 4446.00 ft (KB) Capacity: 8000.00 psig
 Start Date: 2014.12.17 End Date: 2014.12.17 Last Calib.: 2014.12.17
 Start Time: 00:36:05 End Time: 14:30:15 Time On Btm:
 Time Off Btm:

TEST COMMENT: IF: Weak surface blow -Built to 1/4".-Died back to Weak surface blow
 IS: No return
 FF: No blow
 FS: No return



PRESSURE SUMMARY

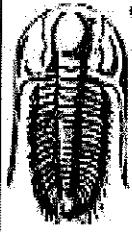
Time (Min.)	Pressure (psig)	Temp (deg F)	Annotation

Recovery

Length (ft)	Description	Volume (bbl)
5.00	Mud 100m	0.02

Gas Rates

Choke (inches)	Pressure (psig)	Gas Rate (Mcf/d)



**TRIOBITE
TESTING, INC.**

DRILL STEM TEST REPORT

TOOL DIAGRAM

Raydon Exploration, Inc

34-33s-31w-Seward,KS

1601 NW Expressway
Ste.#1300
Oklahoma City, OK 73118
ATTN: Ed Grieves

Parity #3-34

Job Ticket: 56586

DST#: 1

Test Start: 2014.12.17 @ 00:36:00

Tool Information

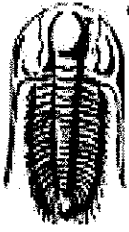
Drill Pipe:	Length: 4194.00 ft	Diameter: 3.80 inches	Volume: 58.83 bbl	Tool Weight: 2500.00 lb
Heavy Wt. Pipe:	Length: 0.00 ft	Diameter: 0.00 inches	Volume: 0.00 bbl	Weight set on Packer: 28000.00 lb
Drill Collar:	Length: 240.00 ft	Diameter: 2.25 inches	Volume: 1.18 bbl	Weight to Pull Loose: 20000.00 lb
			<u>Total Volume: 60.01 bbl</u>	Tool Chased 0.00 ft
Drill Pipe Above KB:	16.00 ft			String Weight: Initial 76000.00 lb
Depth to Top Packer:	4445.00 ft			Final 76000.00 lb
Depth to Bottom Packer:	ft			
Interval between Packers:	11.00 ft			
Tool Length:	38.00 ft			
Number of Packers:	2	Diameter: 6.75 inches		

Tool Comments:

Tool Description

Tool Description	Length (ft)	Serial No.	Position	Depth (ft)	Accum. Lengths
Change Over Sub	1.00			4419.00	
Shut In Tool	5.00			4424.00	
Hydraulic tool	5.00			4429.00	
Jars	5.00			4434.00	
Safety Joint	2.00			4436.00	
Packer	5.00			4441.00	27.00 Bottom Of Top Packer
Packer	4.00			4445.00	
Stubb	1.00			4446.00	
Recorder	0.00	8969	Inside	4446.00	
Recorder	0.00	8968	Outside	4446.00	
Perforations	7.00			4453.00	
Bullnose	3.00			4456.00	11.00 Bottom Packers & Anchor

Total Tool Length: 38.00



**TRILOBITE
TESTING, INC**

DRILL STEM TEST REPORT

FLUID SUMMARY

Raydon Exploration, Inc

34-33s-31w-Seward,KS

1601 NW Expressway
Ste.#1300
Oklahoma City, OK 73118
ATTN: Ed Grieves

Parity #3-34

Job Ticket: 56586

DST#: 1

Test Start: 2014.12.17 @ 00:36:00

Mud and Cushion Information

Mud Type: Gel Chem	Cushion Type:	Oil API:	deg API
Mud Weight: 9.00 lb/gal	Cushion Length: ft	Water Salinity:	ppm
Viscosity: 55.00 sec/qt	Cushion Volume: bbl		
Water Loss: 9.91 in ³	Gas Cushion Type:		
Resistivity: 0.00 ohm.m	Gas Cushion Pressure: psig		
Salinity: 4800.00 ppm			
Filter Cake: 2.00 inches			

Recovery Information

Recovery Table

Length ft	Description	Volume bbl
5.00	Mud 100m	0.025

Total Length: 5.00 ft Total Volume: 0.025 bbl

Num Fluid Samples: 0

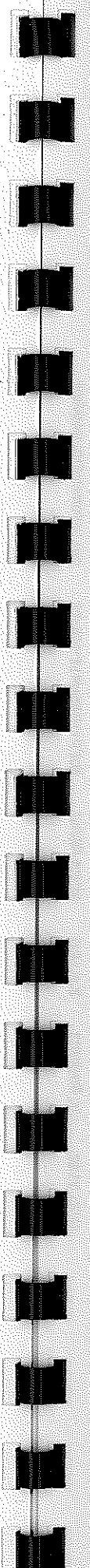
Num Gas Bombs: 0

Serial #:

Laboratory Name:

Laboratory Location:

Recovery Comments:

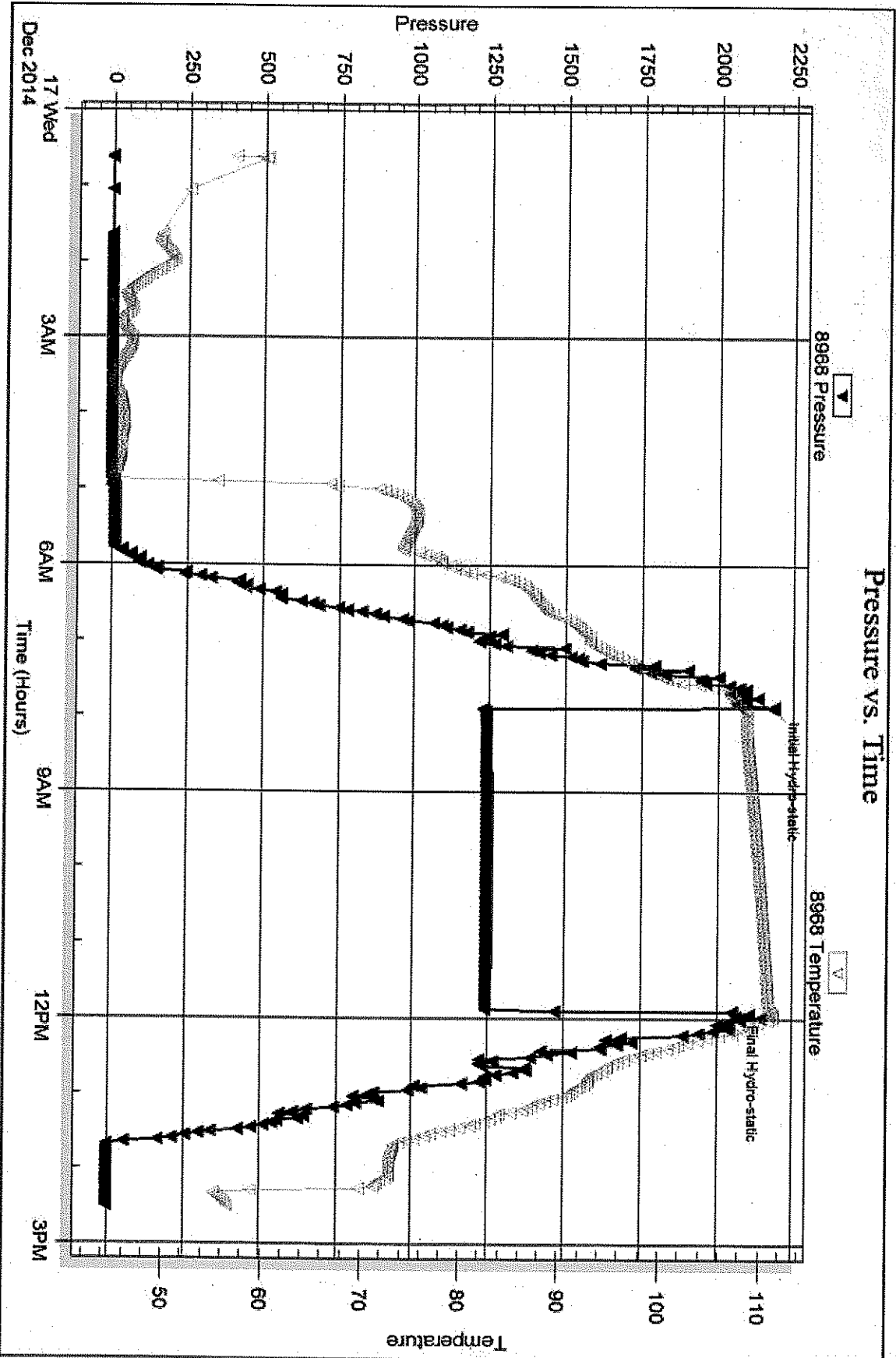


Serial #: 8968

Outlet: Raydon Exploration, Inc

Party #3-34

DST Test Number: 1



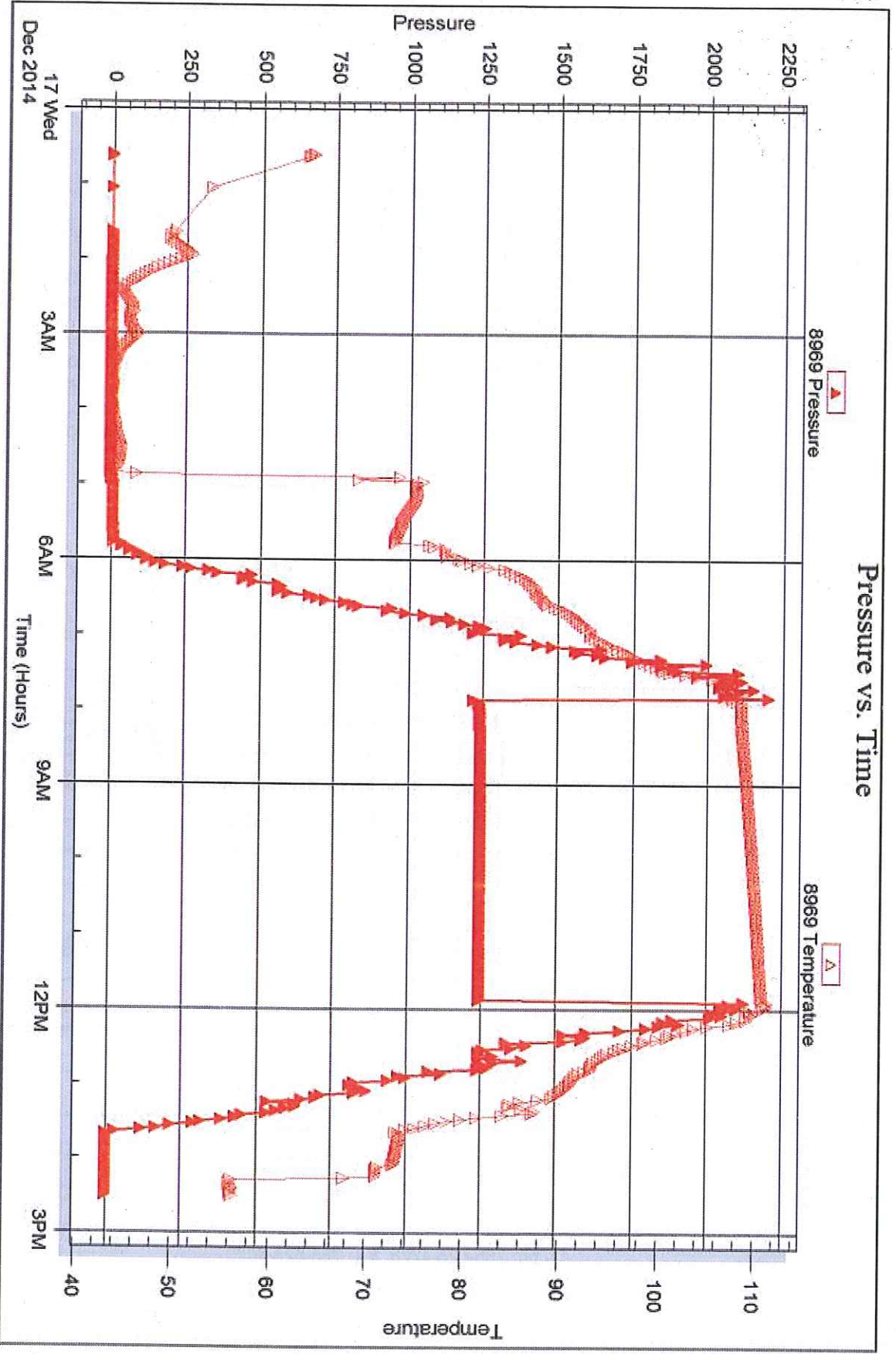
Serial #: 8969

Inside

Raydon Exploration, Inc

Party #3-34

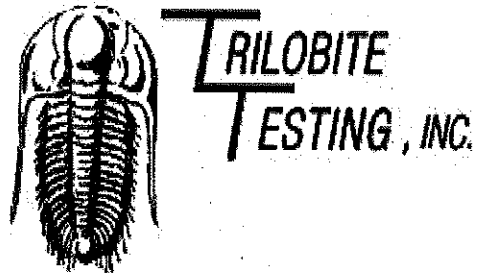
DST Test Number: 1



Tribble Testing, Inc

Ref. No: 56586

Printed: 2014.12.23 @ 09:56:24



DRILL STEM TEST REPORT

Prepared For: **Raydon Exploration, Inc**

1601 NW Expressway
Ste.#1300
Oklahoma City, OK 73118

ATTN: Ed Grieves

Parity #3-34

34-33s-31w-Seward,KS

Start Date: 2014.12.17 @ 23:15:00

End Date: 2014.12.18 @ 13:17:45

Job Ticket #: 56587 DST #: 2

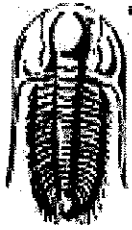
Trilobite Testing, Inc

1515 Commerce Parkway Hays, KS 67601

ph: 785-625-4778 fax: 785-625-5620

Printed: 2014.12.23 @ 09:44:57

Raydon Exploration, Inc
34-33s-31w-Seward,KS
Parity #3-34
DST # 2
Lansing, A
2014.12.17



**TRILOBITE
TESTING, INC.**

DRILL STEM TEST REPORT

Raydon Exploration, Inc

34-33s-31w-Seward,KS

1601 NW Expressway
Ste.#1300
Oklahoma City, OK 73118
ATTN: Ed Grieves

Parity #3-34

Job Ticket: 56587

DST#: 2

Test Start: 2014.12.17 @ 23:15:00

GENERAL INFORMATION:

Formation: **Lansing 'A'**

Deviated: No Whipstock: ft (KB)

Time Tool Opened: 02:07:45

Time Test Ended: 13:17:45

Test Type: Conventional Bottom Hole (Reset)

Tester: Cornelio Landa III

Unit No: 44

Interval: **4446.00 ft (KB) To 4456.00 ft (KB) (TVD)**

Total Depth: 4456.00 ft (KB) (TVD)

Hole Diameter: 7.88 inches Hole Condition: Good

Reference Elevations: 2734.00 ft (KB)

2724.00 ft (CF)

KB to GR/CF: 10.00 ft

Serial #: 8968 Outside

Press@RunDepth: 741.72 psig @ 4447.00 ft (KB)

Start Date: 2014.12.17

End Date: 2014.12.18

Capacity: 8000.00 psig

Last Calib.: 2014.12.18

Start Time: 23:15:05

End Time: 13:17:45

Time On Btm: 2014.12.18 @ 02:07:15

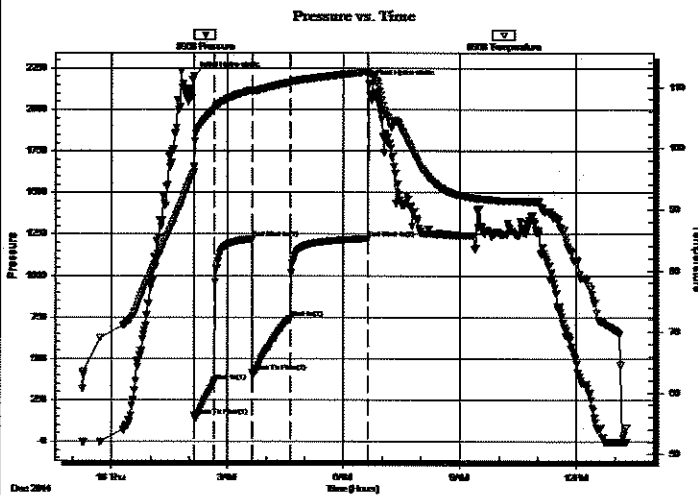
Time Off Btm: 2014.12.18 @ 06:40:15

TEST COMMENT: IF: BOB in 32 seconds - GTS in 20 min.-Gauged gas-See gas report - Wand did light- Yellow w/ slight blue flame

IS: Bled off in 10 min.-BOB in 2 min

FF: BOB immediately-

FS: Bled off in 10 min.- BOB Immediately



PRESSURE SUMMARY

Time (Min.)	Pressure (psig)	Temp (deg F)	Annotation
0	2200.63	96.13	Initial Hydro-static
1	153.17	96.98	Open To Flow (1)
32	358.05	106.35	Shut-In(1)
91	1220.88	109.49	End Shut-In(1)
91	418.30	109.25	Open To Flow (2)
151	741.72	110.77	Shut-In(2)
272	1222.32	112.53	End Shut-In(2)
273	2153.75	112.67	Final Hydro-static

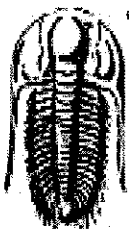
Recovery

Length (ft)	Description	Volume (bbl)
3081.00	Cgo 15g 85o	41.03
120.00	GcW 40g 60w	1.68

* Recovery from multiple tests

Gas Rates

	Choke (inches)	Pressure (psig)	Gas Rate (Mcf/d)
First Gas Rate	0.13	3.00	6.51
Last Gas Rate	0.13	20.00	12.88
Max. Gas Rate	0.13	20.00	12.88



TRILLOBITE TESTING, INC

DRILL STEM TEST REPORT

Raydon Exploration, Inc
1601 NW Expressway
Ste. #1300
Oklahoma City, OK 73118
ATTN: Ed Grieves

34-33s-31w-Seward,KS
Parity #3-34
Job Ticket: 56587 DST#: 2
Test Start: 2014.12.17 @ 23:15:00

GENERAL INFORMATION:

Formation: **Lansing 'A'**

Deviated: No Whipstock: ft (KB)

Time Tool Opened: 02:07:45

Time Test Ended: 13:17:45

Test Type: Conventional Bottom Hole (Reset)

Tester: Cornelio Landa III

Unit No: 44

Interval: **4446.00 ft (KB) To 4456.00 ft (KB) (TVD)**

Reference Elevations: 2734.00 ft (KB)

Total Depth: 4456.00 ft (KB) (TVD)

2724.00 ft (CF)

Hole Diameter: 7.88 inches Hole Condition: Good

KB to GR/CF: 10.00 ft

Serial #: 8969

Inside

Press@RunDepth: psig @ 4447.00 ft (KB)

Capacity: 8000.00 psig

Start Date: 2014.12.17

End Date: 2014.12.18

Last Calib.: 2014.12.18

Start Time: 23:15:05

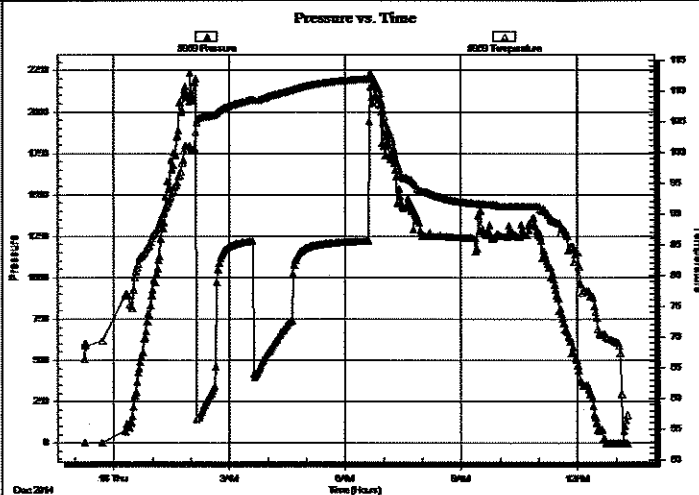
End Time: 13:17:30

Time On Btm:

Time Off Btm:

TEST COMMENT: IF: BOB in 32 seconds - GTS in 20 min.-Gauged gas-See gas report - Wand did light- Yellow w/ slight blue flame
IS: Bled off in 10 min.-BOB in 2 min
FF: BOB immediately-
FS: Bled off in 10 min.- BOB Immediately

PRESSURE SUMMARY



Time (Min.)	Pressure (psig)	Temp (deg F)	Annotation

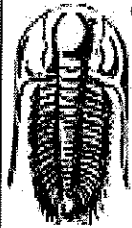
Recovery

Length (ft)	Description	Volume (bbl)
3081.00	Cgo 15g 85o	41.03
120.00	GcW 40g 60w	1.68

* Recovery from multiple tests

Gas Rates

	Choke (inches)	Pressure (psig)	Gas Rate (Mcf/d)
First Gas Rate	0.13	3.00	6.51
Last Gas Rate	0.13	20.00	12.88
Max. Gas Rate	0.13	20.00	12.88



**TRILOBITE
TESTING, INC**

DRILL STEM TEST REPORT

TOOL DIAGRAM

Raydon Exploration, Inc

34-33s-31w-Seward,KS

1601 NW Expressway
Ste.#1300
Oklahoma City, OK 73118
ATTN: Ed Grieves

Parity #3-34

Job Ticket: 56587

DST#: 2

Test Start: 2014.12.17 @ 23:15:00

Tool Information

Drill Pipe:	Length: 4194.00 ft	Diameter: 3.80 inches	Volume: 58.83 bbl	Tool Weight: 2500.00 lb
Heavy Wt. Pipe:	Length: 0.00 ft	Diameter: 0.00 inches	Volume: 0.00 bbl	Weight set on Packer: 30000.00 lb
Drill Collar:	Length: 240.00 ft	Diameter: 2.25 inches	Volume: 1.18 bbl	Weight to Pull Loose: 20000.00 lb
			<u>Total Volume: 60.01 bbl</u>	Tool Chased 0.00 ft
Drill Pipe Above KB:	16.00 ft			String Weight: Initial 70000.00 lb
Depth to Top Packer:	4446.00 ft			Final 76000.00 lb
Depth to Bottom Packer:	ft			
Interval between Packers:	10.00 ft			
Tool Length:	38.00 ft			
Number of Packers:	2	Diameter: 6.75 inches		

Tool Comments:

Tool Description	Length (ft)	Serial No.	Position	Depth (ft)	Accum. Lengths
Change Over Sub	1.00			4419.00	
Shut In Tool	5.00			4424.00	
Hydraulic tool	5.00			4429.00	
Jars	5.00			4434.00	
Safety Joint	2.00			4436.00	
Change Over Sub	1.00			4437.00	
Packer	5.00			4442.00	28.00 Bottom Of Top Packer
Packer	4.00			4446.00	
Stubb	1.00			4447.00	
Recorder	0.00	8969	Inside	4447.00	
Recorder	0.00	8968	Outside	4447.00	
Perforations	6.00			4453.00	
Bullnose	3.00			4456.00	10.00 Bottom Packers & Anchor
Total Tool Length:	38.00				



**TRILOBITE
TESTING, INC**

DRILL STEM TEST REPORT

FLUID SUMMARY

Raydon Exploration, Inc

34-33s-31w-Seward,KS

1601 NW Expressway
Ste.#1300
Oklahoma City, OK 73118
ATTN: Ed Grieves

Parity #3-34

Job Ticket: 56587

DST#: 2

Test Start: 2014.12.17 @ 23:15:00

Mud and Cushion Information

Mud Type: Gel Chem	Cushion Type:	Oil API: 40 deg API
Mud Weight: 9.00 lb/gal	Cushion Length: ft	Water Salinity: 150000 ppm
Viscosity: 52.00 sec/qt	Cushion Volume: bbl	
Water Loss: 9.95 in ³	Gas Cushion Type:	
Resistivity: 0.00 ohm.m	Gas Cushion Pressure: psig	
Salinity: 2500.00 ppm		
Filter Cake: 2.00 inches		

Recovery Information

Recovery Table

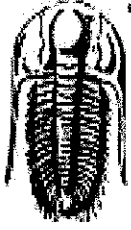
Length ft	Description	Volume bbl
3081.00	Cgo 15g 85o	41.032
120.00	GcW 40g 60w	1.683

Total Length: 3201.00 ft Total Volume: 42.715 bbl

Num Fluid Samples: 0 Num Gas Bombs: 0 Serial #:

Laboratory Name: Laboratory Location:

Recovery Comments: Pipe unloaded fluid for 5 min.-Dropped bar-Reserved fluid into truck caught 5 min. samples for 30 min. RW.880 @48=150000



**TRILOBITE
TESTING, INC.**

DRILL STEM TEST REPORT

GAS RATES

Raydon Exploration, Inc

34-33s-31w-Seward,KS

1601 NW Expressway
Ste.#1300
Oklahoma City, OK 73118
ATTN: Ed Grieves

Parity #3-34

Job Ticket: 56587

DST#: 2

Test Start: 2014.12.17 @ 23:15:00

Gas Rates Information

Temperature: 59 (deg F)
Relative Density: 0.65
Z Factor: 0.8

Gas Rates Table

Flow Period	Elapsed Time	Choke (inches)	Pressure (psig)	Gas Rate (Mcf/d)
1	20	0.13	3.00	6.51
1	25	0.13	4.00	6.89
1	30	0.13	5.00	7.26
2	10	0.13	8.00	8.38
2	20	0.13	9.50	8.95
2	30	0.13	11.00	9.51
2	40	0.13	14.00	10.63
2	50	0.13	18.00	12.13
2	60	0.13	20.00	12.88

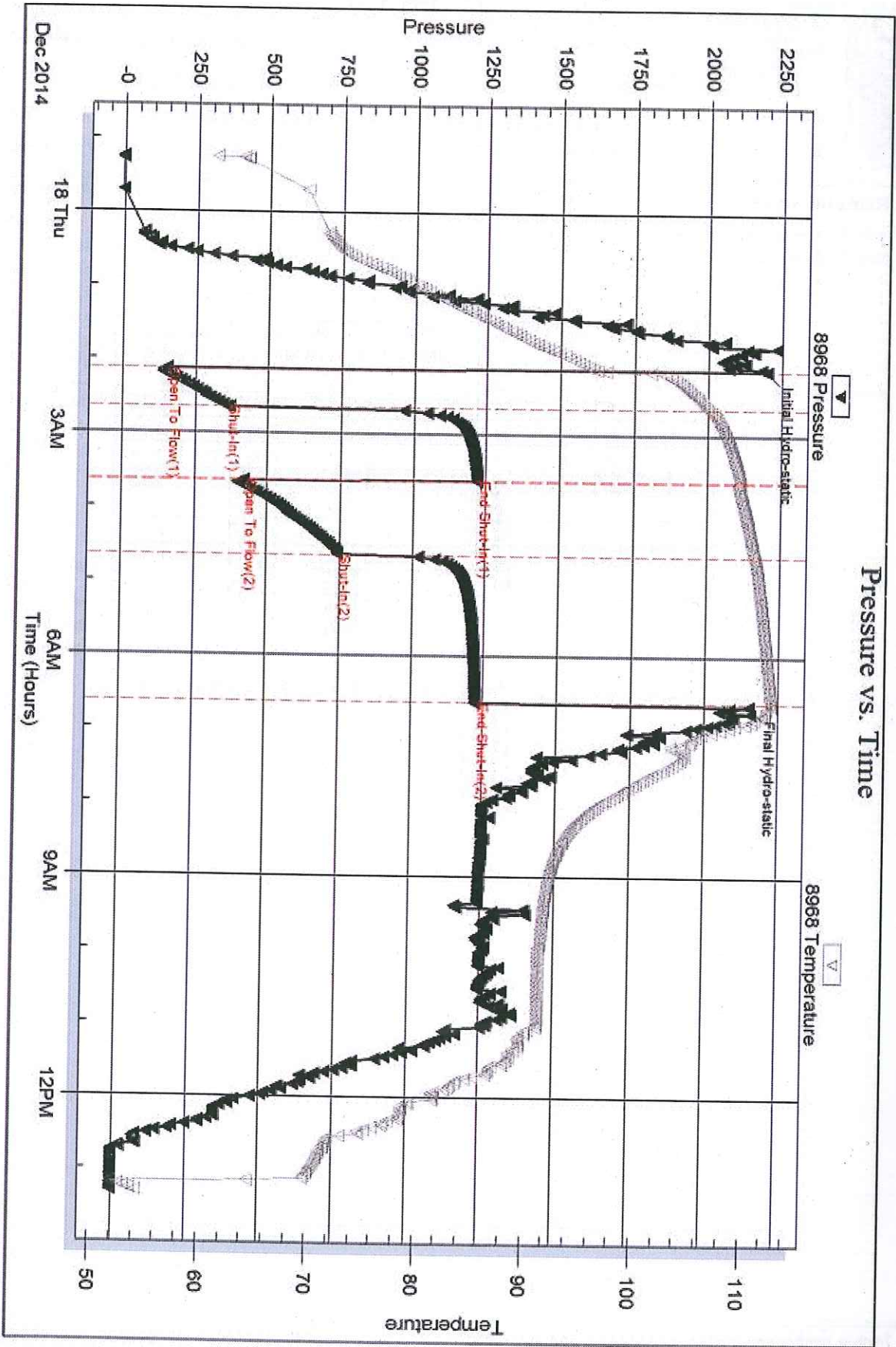
Serial #: 8968

Outside Raydon Exploration, Inc

Part# #3-34

DST Test Number: 2

Pressure vs. Time





TRILOBITE TESTING INC.

1515 Commerce Parkway • Hays, Kansas 67601

Test Ticket

NO. **56586**

Well Name & No. Parity # 3-34 Test No. 1 Date 12-17-14
 Company Raydon Exploration, Inc. Elevation 2734 KB 2724 GL
 Address 1601 NW Expressway - Ste # 1300 - Oklahoma City, OK 73118
 Co. Rep / Geo. Ed Greaves Rig Tomcat #4
 Location: Sec. 34 Twp. 33S Rge. 31W Co. Seward State KS

Interval Tested 4445-4456 Zone Tested Leasing 'A'
 Anchor Length 11' Drill Pipe Run 4194 Mud Wt. 9.0
 Top Packer Depth 4441 Drill Collars Run 240' Vis 55
 Bottom Packer Depth 4445 Wt. Pipe Run Ø WL 10.0
 Total Depth 4456 Chlorides 4800 ppm System LCM #4

Blow Description TF: Weak surface blow - Built to 1/4 in. - Dried back to weak surface blow
ISI: No Return
FF: NO Blow
FST: No Return

Rec	Feet of	%gas	%oil	%water	%mud
Rec	Feet of	%gas	%oil	%water	%mud
Rec <u>5</u>	Feet of <u>mud</u>	%gas	%oil	%water <u>100</u>	%mud
Rec	Feet of	%gas	%oil	%water	%mud
Rec	Feet of	%gas	%oil	%water	%mud

Rec Total 5 BHT 111 Gravity — API RW — @ — °F Chlorides — ppm

(A) Initial Hydrostatic <u>2180</u>	<input checked="" type="checkbox"/> Test <u>1050</u>	T-On Location <u>00:35</u>
(B) First Initial Flow	<input checked="" type="checkbox"/> Jars <u>250</u>	T-Started <u>00:36</u>
(C) First Final Flow	<input checked="" type="checkbox"/> Safety Joint <u>75</u>	T-Open <u>07:53</u>
(D) Initial Shut-In	<input checked="" type="checkbox"/> Circ Sub <u>NIC</u> <u>400</u>	T-Pulled <u>11:53</u>
(E) Second Initial Flow	<input checked="" type="checkbox"/> Hourly Standby <u>4 hrs over a better fine</u>	T-Out <u>14:31</u>
(F) Second Final Flow	<input checked="" type="checkbox"/> Mileage <u>116 R/T</u> <u>170.50</u>	Comments
(G) Final Shut-In	<input type="checkbox"/> Sampler	
(H) Final Hydrostatic <u>2051</u>	<input type="checkbox"/> Straddle	<input type="checkbox"/> Ruined Shale Packer
Initial Open <u>30</u>	<input checked="" type="checkbox"/> Shale Packer <u>250</u>	<input type="checkbox"/> Ruined Packer
Initial Shut-In <u>60</u>	<input type="checkbox"/> Extra Packer	<input type="checkbox"/> Extra Copies
Final Flow <u>30</u>	<input type="checkbox"/> Extra Recorder	Sub Total <u>0</u>
Final Shut-In <u>120</u>	<input type="checkbox"/> Day Standby	Total <u>2345.50</u>
	<input checked="" type="checkbox"/> Accessibility <u>150</u>	MP/DST Disc't
	Sub Total <u>2345.50</u>	

Approved By Ed Greaves Our Representative Ed Greaves

Trilobite Testing Inc. shall not be liable for damaged of any kind of the property or personnel of the one for whom a test is made, or for any loss suffered or sustained, directly or indirectly, through the use of its equipment, or its statements or opinion concerning the results of any test, tools lost or damaged in the hole shall be paid for at cost by the party for whom the test is made.



TRILOBITE TESTING INC.

1515 Commerce Parkway • Hays, Kansas 67601

Test Ticket

NO. 56587

Well Name & No. Party # 3-34 Test No. 2 Date 12-17-14
 Company Raydon Exploration, Inc Elevation 2734 KB 2734 GL
 Address 1601 NW Expressway Ste. #1300 - Oklahoma City, OK 73118
 Co. Rep / Geo. Ed Griever Rig Tomcat #4
 Location: Sec. 34 Twp. 33S Rge. 31W Co. Seward State KS

Interval Tested 4446-4456 Zone Tested Lansing 'A'
 Anchor Length 10' Drill Pipe Run 4194' Mud Wt. 8.9
 Top Packer Depth 4442 Drill Collars Run 240' Vis 52
 Bottom Packer Depth 4446 Wt. Pipe Run 8' WL 10.0
 Total Depth 4456 Chlorides 2500 ppm System LCM #4

Blow Description IF: B.O.B. in 32 seconds - G.T.S. in 20 min - Took Gas Sample - Gauged Gas
ISI: Bled off in 10 min - B.O.B. in 2 min - G.T.S. | See Gas Report
FF: B.O.B. Immediately - G.T.S. - Gauged Gas - See Gas Report
FSI: Bled off in 10 min - B.O.B. Immediately

Rec	Feet of	%gas	%oil	%water	%mud
<u>120</u>	<u>GCW</u>	<u>40</u>	<u>60</u>		
<u>3081</u>	<u>CGO</u>	<u>15</u>	<u>85</u>		
Rec	Feet of	%gas	%oil	%water	%mud
Rec	Feet of	%gas	%oil	%water	%mud
Rec	Feet of	%gas	%oil	%water	%mud

Rec Total 3201 BHT 113 Gravity 40 API RW 88 @ 48 °F Chlorides 15000 ppm

(A) Initial Hydrostatic 2201 Test 1250
 (B) First Initial Flow 153 Jars 250
 (C) First Final Flow 358 Safety Joint 75
 (D) Initial Shut-In 1221 Circ Sub 350 50
 (E) Second Initial Flow 418 Hourly Standby 2 hrs over slotted
 (F) Second Final Flow 742 Mileage 170.50 fine
 (G) Final Shut-In 1222 Sampler
 (H) Final Hydrostatic 2154 Straddle
 Shale Packer X2 500
 Extra Packer
 Extra Recorder
 Day Standby 1.5d 14h
 Accessibility 14 hrs at 150
 Sub Total 2845 Standby since last test

T-On Location 23:15
 T-Started 0 23:15
 T-Open 02:07
 T-Pulled 06:37
 T-Out 13:17
 Comments Dropped Bar - reversed fluid into truck on loc @ 15:15 on 12-20-14
 Ruined Shale Packer
 Ruined Packer
 Extra Copies
 Sub Total 800
 Total 3645.50
 MP/DST Disc't

Initial Open 30
 Initial Shut-In 60
 Final Flow 60
 Final Shut-In 120

Approved By [Signature] Our Representative [Signature]

Trilobite Testing Inc. shall not be liable for damaged of any kind of the property or personnel of the one for whom a test is made, or for any loss suffered or sustained, directly or indirectly, through the use of its equipment, or its statements or opinion concerning the results of any test, tools lost or damaged in the hole shall be paid for at cost by the party for whom the test is made.

