



TRILOBITE TESTING, INC.

DRILL STEM TEST REPORT

McElvain Energy Inc.

27-10s-22w-Graham Co.

1050 17th STE 2500
Denver CO 80265

Faulkner #27-13

Job Ticket: 60690

DST#: 1

ATTN: Rodney Gonzales

Test Start: 2014.11.20 @ 10:55:52

GENERAL INFORMATION:

Formation: **LKC "D"**

Deviated: No Whipstock: ft (KB)

Time Tool Opened: 13:57:52

Time Test Ended: 19:52:41

Test Type: Conventional Bottom Hole (Initial)

Tester: Tate Lang

Unit No: 77

Interval: 3617.00 ft (KB) To 3627.00 ft (KB) (TVD)

Reference Elevations: 2301.00 ft (KB)

Total Depth: 3637.00 ft (KB) (TVD)

2291.00 ft (CF)

Hole Diameter: 7.88 inches Hole Condition: Good

KB to GR/CF: 10.00 ft

Serial #: 8898 Outside

Press @ Run Depth: 105.44 psig @ 3618.00 ft (KB)

Capacity: 8000.00 psig

Start Date: 2014.11.20

End Date:

2014.11.20

Last Calib.:

2014.11.20

Start Time: 10:55:53

End Time:

19:52:41

Time On Btm:

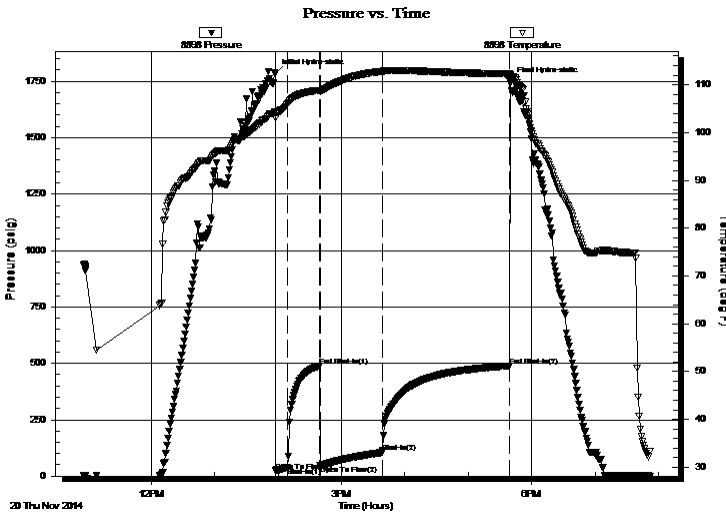
2014.11.20 @ 13:57:42

Time Off Btm:

2014.11.20 @ 17:39:42

TEST COMMENT: 10-Fair blow built to 6 in.
30-Weak surface blow back
60-B.O.B. in 20 mins
120-Weak surface blow back died in 55 mins

PRESSURE SUMMARY



| Time (Min.) | Pressure (psig) | Temp (deg F) | Annotation |
|-------------|-----------------|--------------|----------------------|
| 0 | 1784.27 | 104.31 | Initial Hydro-static |
| 1 | 23.32 | 103.10 | Open To Flow (1) |
| 12 | 40.87 | 106.08 | Shut-In(1) |
| 42 | 488.91 | 108.81 | End Shut-In(1) |
| 42 | 48.49 | 108.67 | Open To Flow (2) |
| 102 | 105.44 | 112.78 | Shut-In(2) |
| 222 | 488.87 | 112.25 | End Shut-In(2) |
| 223 | 1748.67 | 112.05 | Final Hydro-static |

Recovery

| Length (ft) | Description | Volume (bbl) |
|-------------|---------------------|--------------|
| 15.00 | 100%O | 0.21 |
| 45.00 | OCWM 20%O 20%W 60%M | 0.63 |
| 120.00 | SOCMW 2%O 8%M 90%W | 1.68 |
| 0.00 | 240 GIP | 0.00 |
| | | |
| | | |

Gas Rates

| | Choke (inches) | Pressure (psig) | Gas Rate (Mcf/d) |
|--|----------------|-----------------|------------------|
| | | | |



**TRILOBITE
TESTING, INC.**

DRILL STEM TEST REPORT

FLUID SUMMARY

McElvain Energy Inc.

27-10s-22w-Graham Co.

1050 17th STE 2500
Denver CO 80265

Faulkner #27-13

Job Ticket: 60690

DST#: 1

ATTN: Rodney Gonzales

Test Start: 2014.11.20 @ 10:55:52

Mud and Cushion Information

Mud Type: Gel Chem

Cushion Type:

Oil API:

deg API

Mud Weight: 9.00 lb/gal

Cushion Length:

ft

Water Salinity:

65000 ppm

Viscosity: 52.00 sec/qt

Cushion Volume:

bbbl

Water Loss: 6.80 in³

Gas Cushion Type:

Resistivity: ohm.m

Gas Cushion Pressure:

psig

Salinity: 1100.00 ppm

Filter Cake: 1.00 inches

Recovery Information

Recovery Table

| Length ft | Description | Volume bbbl |
|--------------|---------------------|----------------|
| 15.00 | 100%O | 0.210 |
| 45.00 | OCWM 20%O 20%W 60%M | 0.631 |
| 120.00 | SOCMW 2%O 8%M 90%W | 1.683 |
| 0.00 | 240 GIP | 0.000 |

Total Length: 180.00 ft Total Volume: 2.524 bbl

Num Fluid Samples: 0

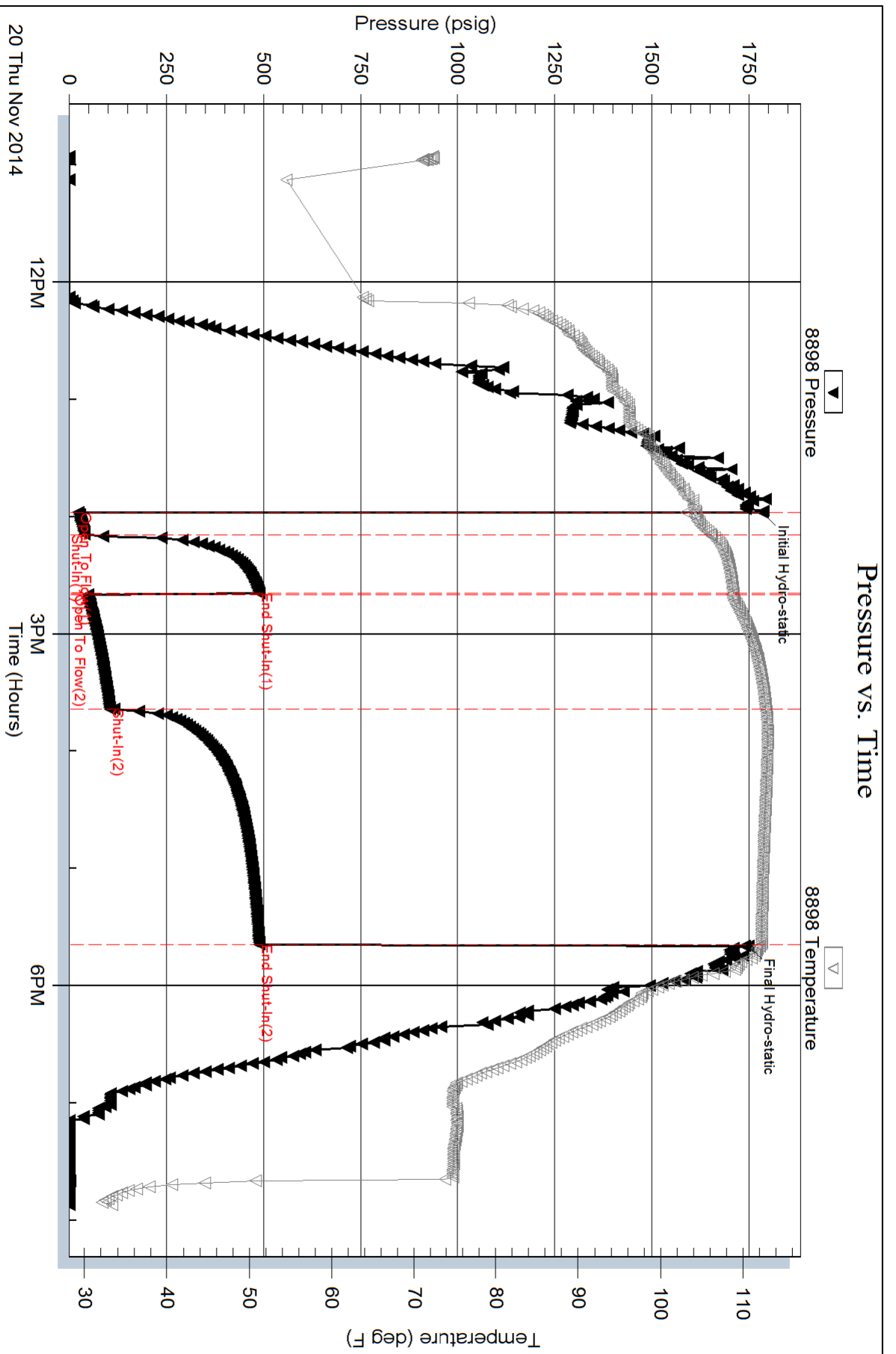
Num Gas Bombs: 0

Serial #:

Laboratory Name:

Laboratory Location:

Recovery Comments: .211 @ 40 F = 65000



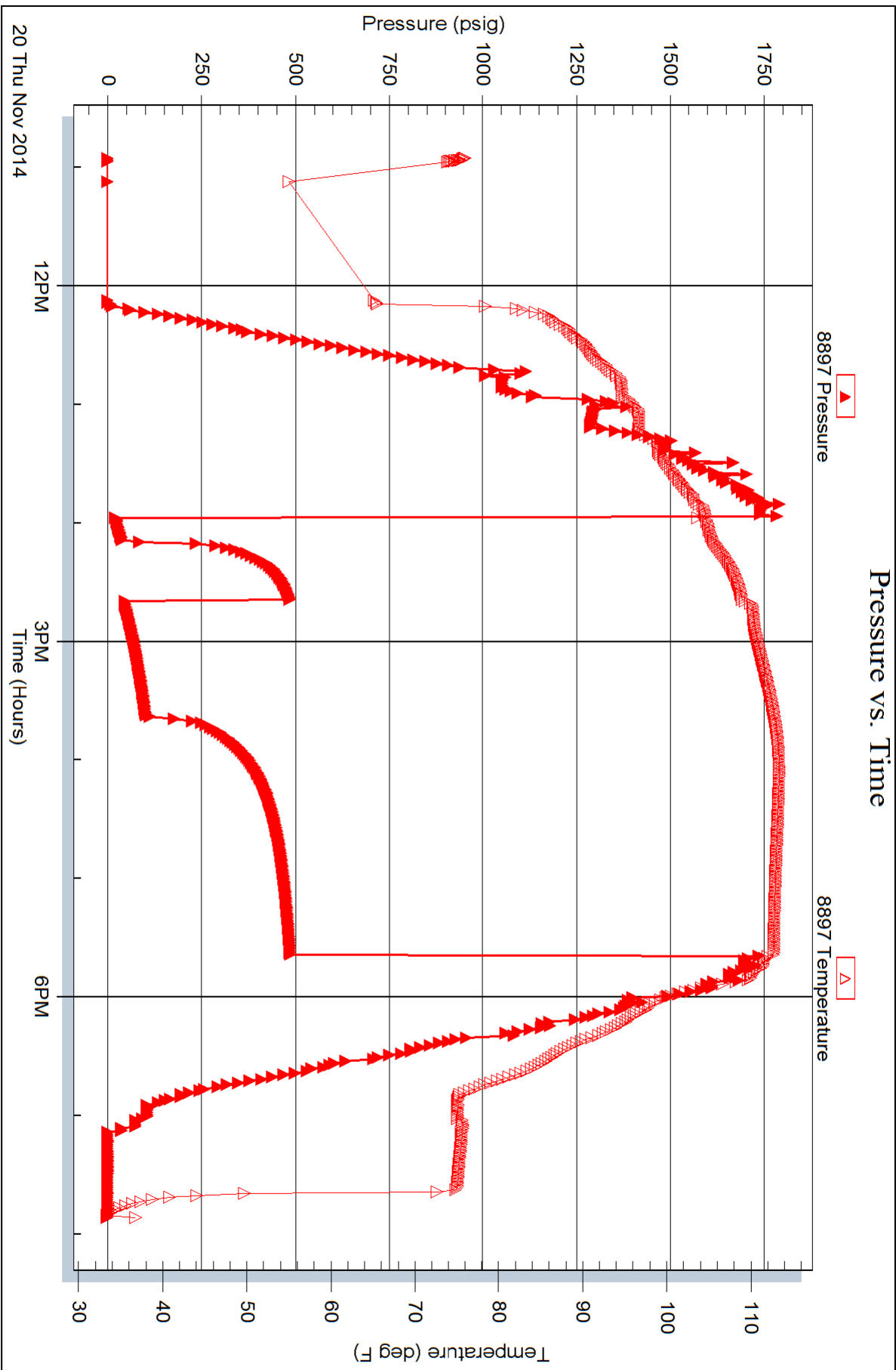
Serial #: 8897

Inside

McElvain Energy Inc.

Faulkner #27-13

DST Test Number: 1



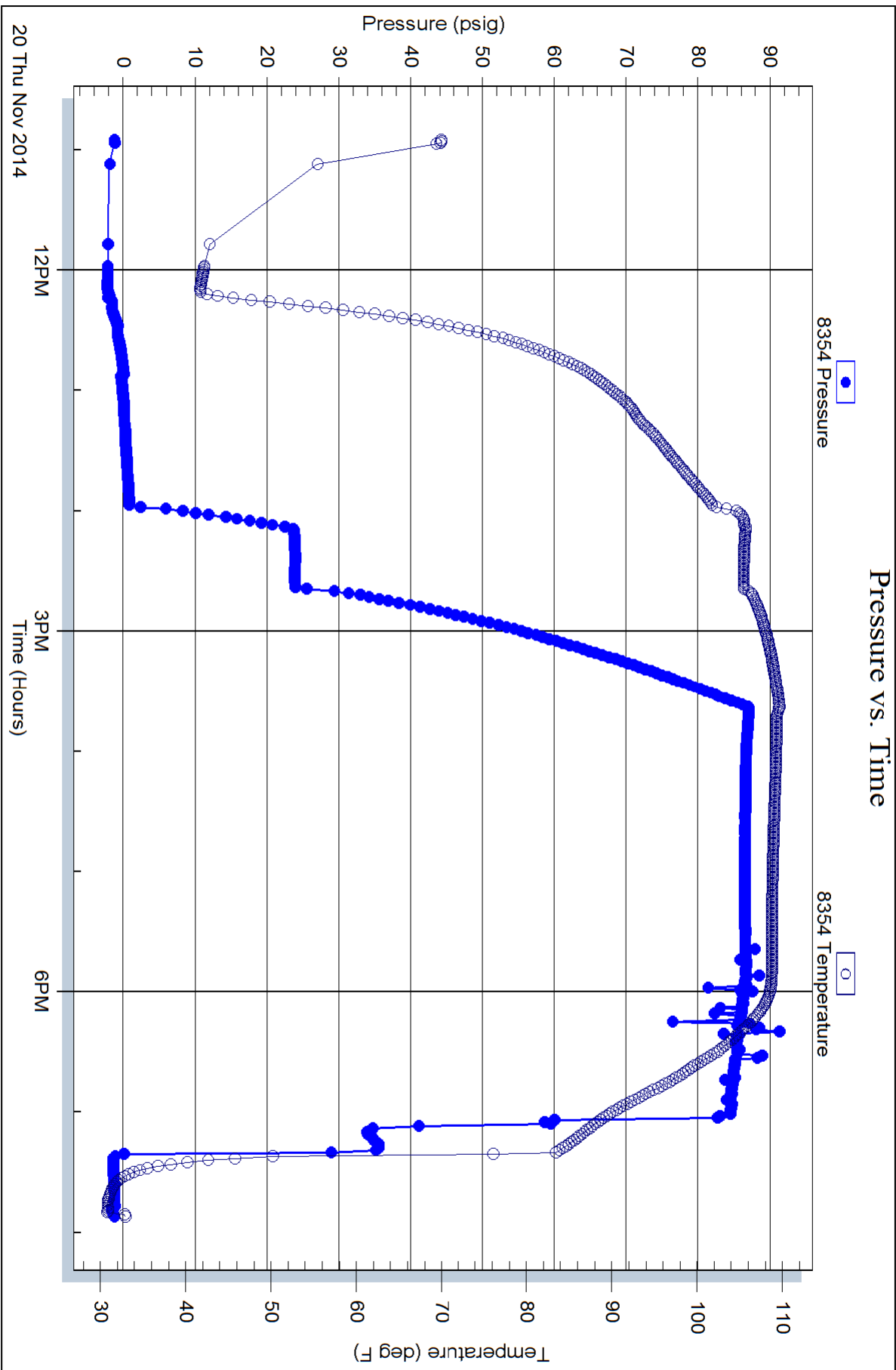
Serial #: 8354

Fluid

McElvain Energy Inc.

Faulkner #27-13

DST Test Number: 1



Trilobite Testing, Inc

Ref. No: 60690

Printed: 2014.11.20 @ 22:51:32