



**TRILOBITE TESTING, INC.**

# DRILL STEM TEST REPORT

McElvain Energy Inc.

**27-10s-22w-Graham Co.**

1050 17th STE 2500  
Denver CO 80265

**Faulkner #27-13**

Job Ticket: 60691

**DST#: 2**

ATTN: Rodney Gonzales

Test Start: 2014.11.21 @ 12:25:16

## GENERAL INFORMATION:

Formation: **LKC I-J**  
 Deviated: No Whipstock: ft (KB)  
 Test Type: Conventional Bottom Hole (Reset)  
 Time Tool Opened: 14:29:46  
 Tester: Tate Lang  
 Time Test Ended: 20:05:06  
 Unit No: 77  
 Interval: **3714.00 ft (KB) To 3744.00 ft (KB) (TVD)**  
 Reference Elevations: 2301.00 ft (KB)  
 Total Depth: 3744.00 ft (KB) (TVD)  
 2291.00 ft (CF)  
 Hole Diameter: 7.88 inches  
 Hole Condition: Good  
 KB to GR/CF: 10.00 ft

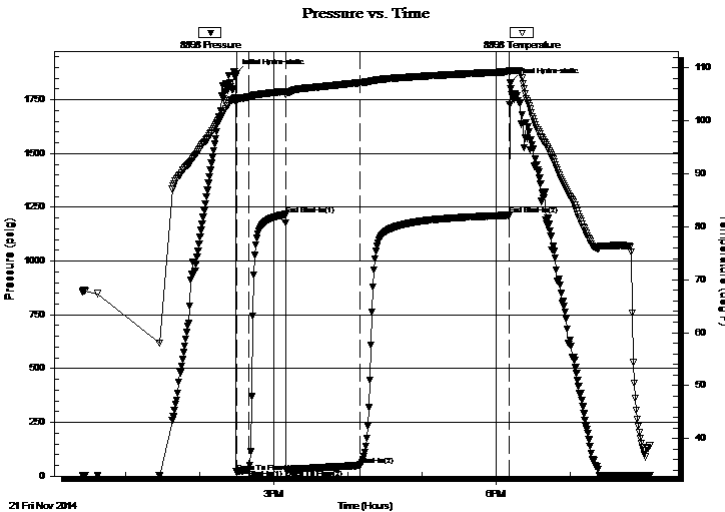
## Serial #: 8898

Outside

Press@RunDepth: 49.48 psig @ 3715.00 ft (KB) Capacity: 8000.00 psig  
 Start Date: 2014.11.21 End Date: 2014.11.21 Last Calib.: 2014.11.21  
 Start Time: 12:25:17 End Time: 20:05:06 Time On Btm: 2014.11.21 @ 14:29:36  
 Time Off Btm: 2014.11.21 @ 18:11:55

TEST COMMENT: 10-Weak surface blow built to 1 1/2 in  
 30-Dead no blow back  
 60-Strong blow built to 10 in  
 120-Dead no blow back

## PRESSURE SUMMARY



Time (Min.)	Pressure (psig)	Temp (deg F)	Annotation
0	1871.92	104.31	Initial Hydro-static
1	19.24	103.56	Open To Flow (1)
11	29.76	104.50	Shut-In(1)
40	1216.83	105.56	End Shut-In(1)
41	30.97	104.93	Open To Flow (2)
101	49.48	107.18	Shut-In(2)
222	1212.85	109.26	End Shut-In(2)
223	1827.92	109.39	Final Hydro-static

## Recovery

Length (ft)	Description	Volume (bbl)
2.00	100% Free Oil	0.03
65.00	GOCM 10%G 40%O 50%M	0.91
0.00	120 GIP	0.00

\* Recovery from multiple tests

## Gas Rates

	Choke (inches)	Pressure (psig)	Gas Rate (Mcf/d)



# TRILOBITE TESTING, INC

## DRILL STEM TEST REPORT

McElvain Energy Inc.

**27-10s-22w-Graham Co.**

1050 17th STE 2500  
Denver CO 80265

**Faulkner #27-13**

ATTN: Rodney Gonzales

Job Ticket: 60691

**DST#: 2**

Test Start: 2014.11.21 @ 12:25:16

### GENERAL INFORMATION:

Formation: **LKC I-J**

Deviated: No Whipstock: ft (KB)

Test Type: Conventional Bottom Hole (Reset)

Time Tool Opened: 14:29:46

Tester: Tate Lang

Time Test Ended: 20:05:06

Unit No: 77

**Interval: 3714.00 ft (KB) To 3744.00 ft (KB) (TVD)**

Reference Elevations: 2301.00 ft (KB)

Total Depth: 3744.00 ft (KB) (TVD)

2291.00 ft (CF)

Hole Diameter: 7.88 inches Hole Condition: Good

KB to GR/CF: 10.00 ft

**Serial #: 8354** Fluid

Press@RunDepth: psig @ 3678.00 ft (KB)

Capacity: 8000.00 psig

Start Date: 2014.11.21

End Date:

2014.11.21

Last Calib.:

2014.11.21

Start Time: 12:25:59

End Time:

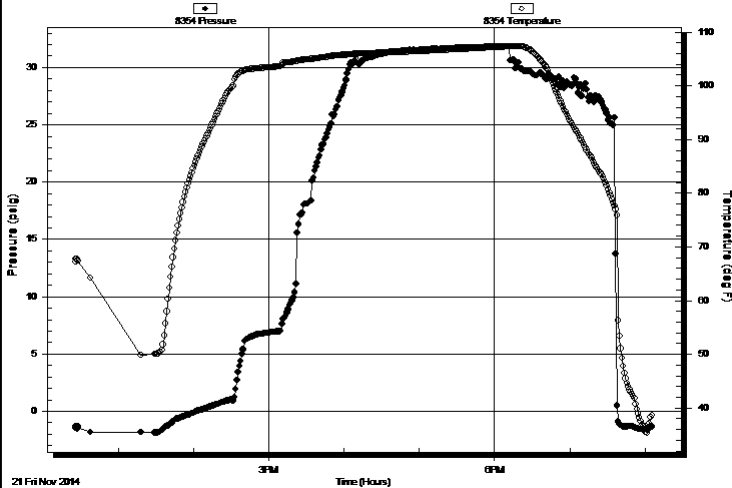
20:05:53

Time On Btm:

Time Off Btm:

**TEST COMMENT:** 10-Weak surface blow built to 1 1/2 in  
30-Dead no blow back  
60-Strong blow built to 10 in  
120-Dead no blow back

### Pressure vs. Time



### PRESSURE SUMMARY

Time (Min.)	Pressure (psig)	Temp (deg F)	Annotation

### Recovery

Length (ft)	Description	Volume (bbl)
2.00	100% Free Oil	0.03
65.00	GOCM 10%G 40%O 50%M	0.91
0.00	120 GIP	0.00

### Gas Rates

	Choke (inches)	Pressure (psig)	Gas Rate (Mcf/d)

\* Recovery from multiple tests



**TRILOBITE  
TESTING, INC**

# DRILL STEM TEST REPORT

**FLUID SUMMARY**

McElvain Energy Inc.

**27-10s-22w-Graham Co.**

1050 17th STE 2500  
Denver CO 80265

**Faulkner #27-13**

Job Ticket: 60691

**DST#: 2**

ATTN: Rodney Gonzales

Test Start: 2014.11.21 @ 12:25:16

## Mud and Cushion Information

Mud Type: Gel Chem

Cushion Type:

Oil API:

deg API

Mud Weight: 9.00 lb/gal

Cushion Length:

ft

Water Salinity:

ppm

Viscosity: 53.00 sec/qt

Cushion Volume:

bbbl

Water Loss: 6.80 in<sup>3</sup>

Gas Cushion Type:

Resistivity: ohm.m

Gas Cushion Pressure:

psig

Salinity: 1900.00 ppm

Filter Cake: 1.00 inches

## Recovery Information

Recovery Table

Length ft	Description	Volume bbl
2.00	100% Free Oil	0.028
65.00	GOCM 10%G 40%O 50%M	0.912
0.00	120 GIP	0.000

Total Length: 67.00 ft      Total Volume: 0.940 bbl

Num Fluid Samples: 0

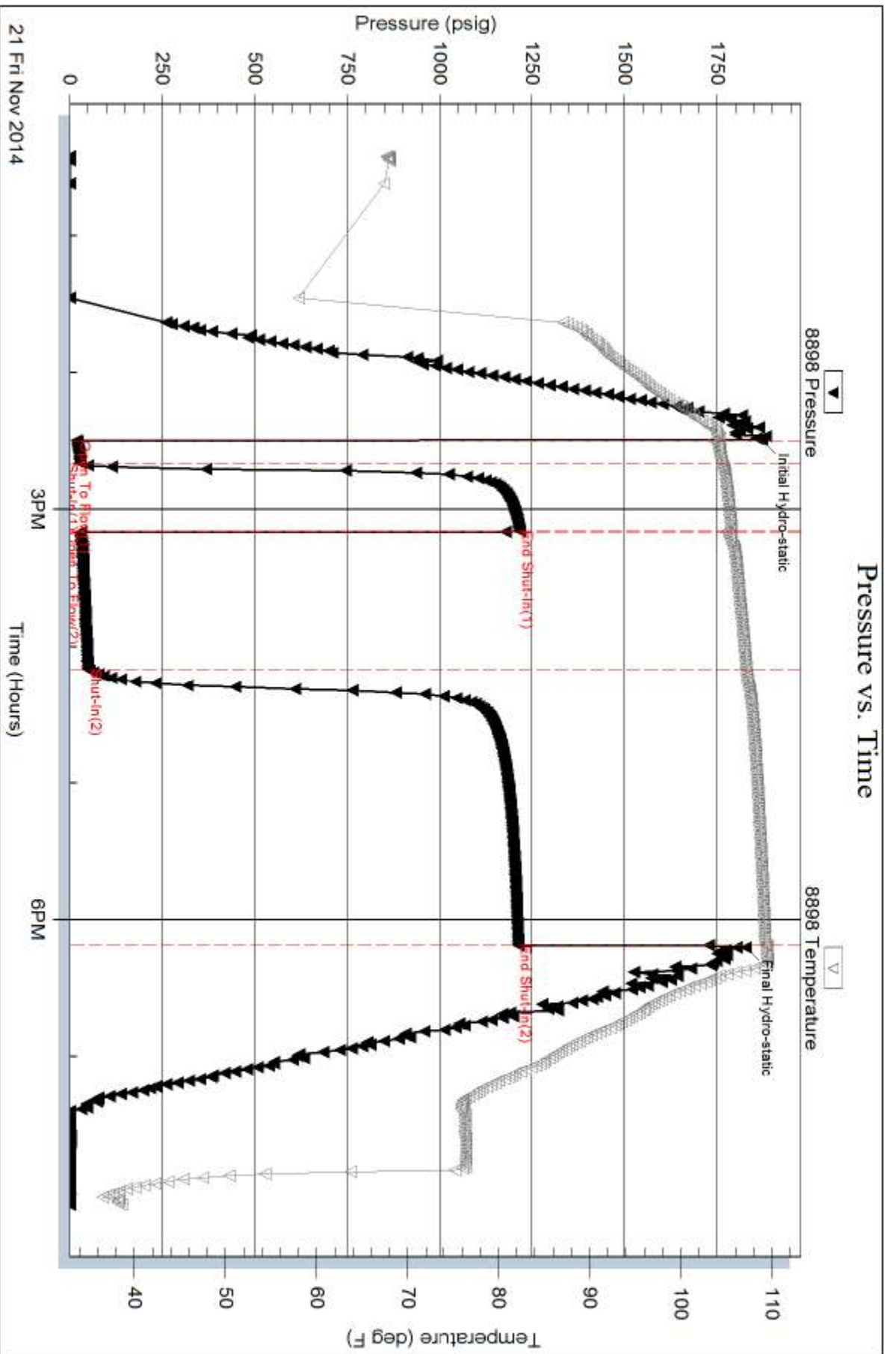
Num Gas Bombs: 0

Serial #:

Laboratory Name:

Laboratory Location:

Recovery Comments: Sampler 500ML Mud, 2000ML Oil, 2000ML Gas PSI 235  
Gravity 29



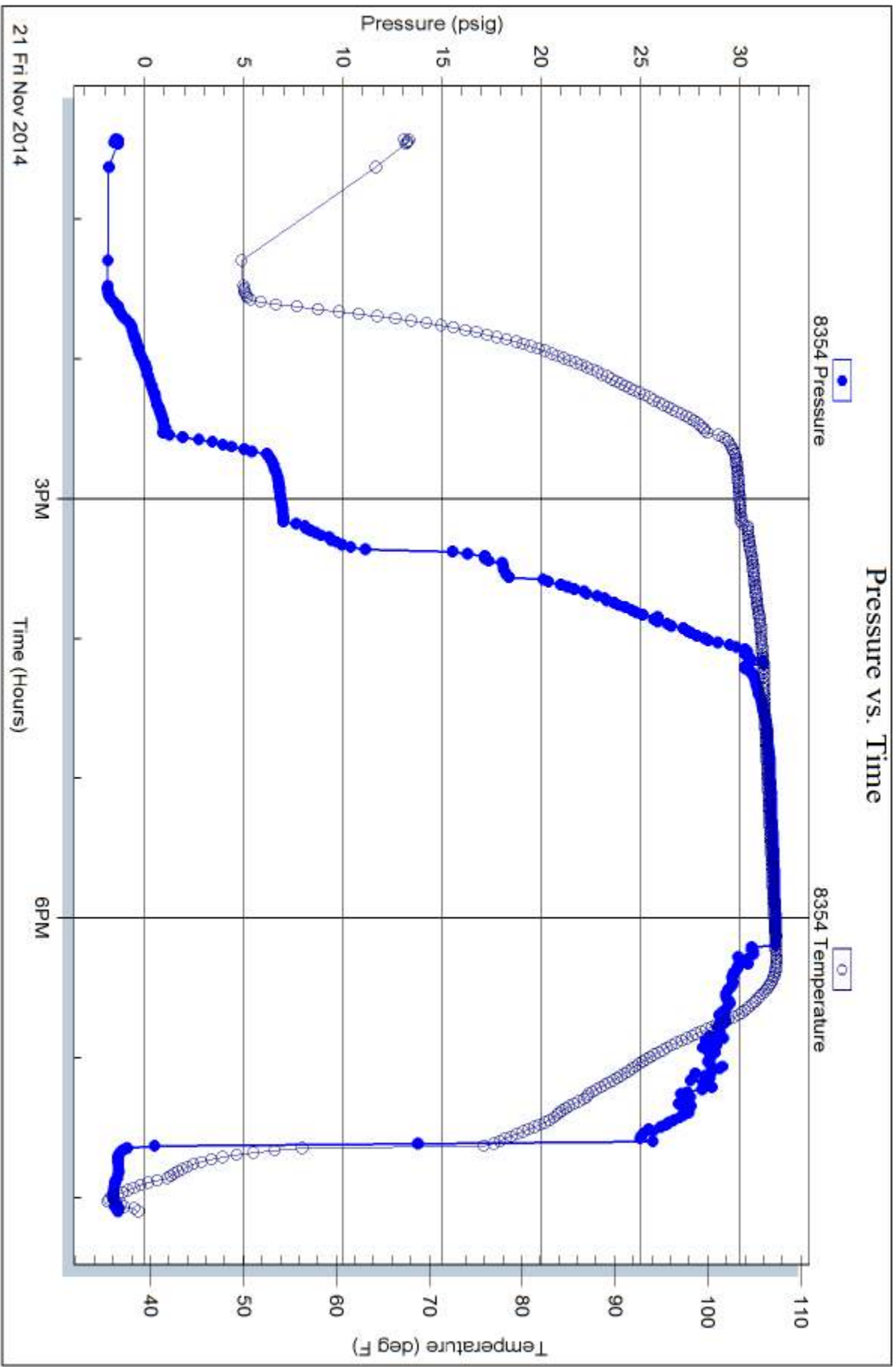
Serial #: 8354

Fluid

McElvain Energy Inc.

Faulkner #27-13

DST Test Number: 2



Trilobite Testing, Inc

Ref. No: 60691

Printed: 2014.11.21 @ 21:00:00