



TRILOBITE TESTING, INC.

DRILL STEM TEST REPORT

Vincent Oil Corp.
 155 N. Market Ste. 700
 Wichita, KS 67202-1821
 ATTN: Tom Dudgeon

34-28s-23w Ford Co., KS
Keough 2-34
 Job Ticket: 59917 **DST#: 4**
 Test Start: 2014.10.25 @ 16:45:45

GENERAL INFORMATION:

Formation: **Miss.**
 Deviated: No Whipstock: 0.00 ft (KB)
 Time Tool Opened: 19:17:30
 Time Test Ended: 02:16:15
 Interval: **5205.00 ft (KB) To 5220.00 ft (KB) (TVD)**
 Total Depth: 5220.00 ft (KB) (TVD)
 Hole Diameter: 7.88 inches Hole Condition: Fair
 Test Type: Conventional Bottom Hole (Reset)
 Tester: Ryan Reynolds
 Unit No: 68
 Reference Elevations: 2514.00 ft (KB)
 2505.00 ft (CF)
 KB to GR/CF: 9.00 ft

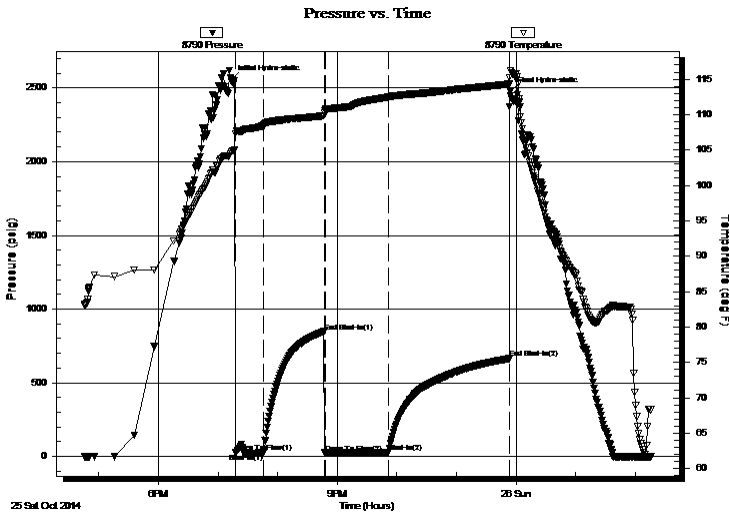
Serial #: 8790

Inside

Press @ Run Depth: 28.80 psig @ 5206.00 ft (KB) Capacity: 8000.00 psig
 Start Date: 2014.10.25 End Date: 2014.10.26 Last Calib.: 2014.10.26
 Start Time: 16:45:50 End Time: 02:16:15 Time On Btm: 2014.10.25 @ 19:13:45
 Time Off Btm: 2014.10.25 @ 23:54:15

TEST COMMENT: IF: Strong blow . BOB @ 20sec. No GTS.
 IS: No blow
 FF: Strong blow . BOB immed. GTS @ 57min. TSTM
 FS: No blow

PRESSURE SUMMARY



| Time (Min.) | Pressure (psig) | Temp (deg F) | Annotation |
|-------------|-----------------|--------------|----------------------|
| 0 | 2553.24 | 104.79 | Initial Hydro-static |
| 4 | 30.30 | 107.34 | Open To Flow (1) |
| 33 | 24.54 | 108.46 | Shut-In(1) |
| 93 | 847.57 | 109.83 | End Shut-In(1) |
| 94 | 21.68 | 110.55 | Open To Flow (2) |
| 158 | 28.80 | 112.50 | Shut-In(2) |
| 280 | 664.17 | 114.32 | End Shut-In(2) |
| 281 | 2475.33 | 116.25 | Final Hydro-static |

Recovery

| Length (ft) | Description | Volume (bbl) |
|-------------|-----------------------|--------------|
| 50.00 | GOCM 15%g, 25%o, 60%m | 0.70 |
| | | |
| | | |
| | | |
| | | |

* Recovery from multiple tests

Gas Rates

| Choke (inches) | Pressure (psig) | Gas Rate (Mcf/d) |
|----------------|-----------------|------------------|
| | | |



**TRILOBITE
TESTING, INC.**

DRILL STEM TEST REPORT

FLUID SUMMARY

Vincent Oil Corp.

34-28s-23w Ford Co., KS

155 N. Market Ste. 700
Wichita, KS 67202-1821

Keough 2-34

Job Ticket: 59917

DST#: 4

ATTN: Tom Dudgeon

Test Start: 2014.10.25 @ 16:45:45

Mud and Cushion Information

Mud Type: Gel Chem

Cushion Type:

Oil API:

deg API

Mud Weight: 9.00 lb/gal

Cushion Length:

ft

Water Salinity:

9100 ppm

Viscosity: 60.00 sec/qt

Cushion Volume:

bbbl

Water Loss: 11.59 in³

Gas Cushion Type:

Resistivity: ohm.m

Gas Cushion Pressure:

psig

Salinity: 9100.00 ppm

Filter Cake: 0.05 inches

Recovery Information

Recovery Table

| Length ft | Description | Volume bbl |
|--------------|-----------------------|---------------|
| 50.00 | GOCM 15%g, 25%o, 60%m | 0.701 |

Total Length: 50.00 ft

Total Volume: 0.701 bbl

Num Fluid Samples: 1

Num Gas Bombs: 3

Serial #: RR-3

Laboratory Name: Caraway

Laboratory Location: Liberal, KS

Recovery Comments:

Serial #: 8790

Inside

Vincent Oil Corp.

Keough 2-34

DST Test Number: 4

