



## DRILL STEM TEST REPORT

Prepared For: **Landmark Resources, Inc.**

1616 Voss Rd STE 600  
Houston TX 77057-2641

ATTN: Terry McLeod

### **Krebs #2-6**

### **6-17s-33w Scott,KS**

Start Date: 2015.01.01 @ 13:40:00

End Date: 2015.01.01 @ 22:37:15

Job Ticket #: 58516                      DST #: 1

Trilobite Testing, Inc  
1515 Commerce Parkway Hays, KS 67601  
ph: 785-625-4778 fax: 785-625-5620

Printed: 2015.01.05 @ 10:07:23



**TRILOBITE TESTING, INC**

# DRILL STEM TEST REPORT

Landmark Resources, Inc.

**6-17s-33w Scott,KS**

1616 Voss Rd STE 600  
Houston TX 77057-2641

**Krebs #2-6**

Job Ticket: 58516

**DST#: 1**

ATTN: Terry McLeod

Test Start: 2015.01.01 @ 13:40:00

## GENERAL INFORMATION:

Formation: **Marmaton - Altamont**

Deviated: No Whipstock: ft (KB)

Time Tool Opened: 16:13:00

Time Test Ended: 22:37:15

Test Type: Conventional Bottom Hole (Initial)

Tester: Jace McKinney

Unit No: 75

Interval: **4418.00 ft (KB) To 4530.00 ft (KB) (TVD)**

Reference Elevations: 3090.00 ft (KB)

Total Depth: 4530.00 ft (KB) (TVD)

3085.00 ft (CF)

Hole Diameter: 7.88 inches Hole Condition: Poor

KB to GR/CF: 5.00 ft

**Serial #: 8675**

**Inside**

Press@RunDepth: 237.56 psig @ 4419.00 ft (KB)

Capacity: 8000.00 psig

Start Date: 2015.01.01

End Date:

2015.01.01

Last Calib.: 2015.01.01

Start Time: 13:40:15

End Time:

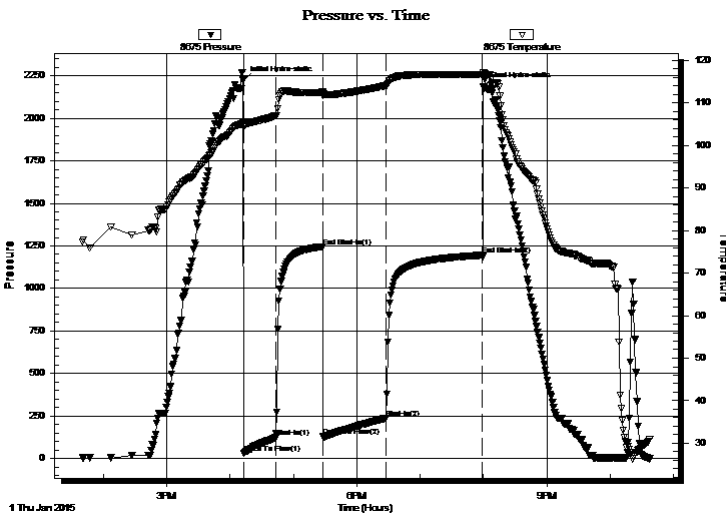
22:37:15

Time On Btm: 2015.01.01 @ 16:12:45

Time Off Btm: 2015.01.01 @ 20:00:00

**TEST COMMENT:** B.O.B. in 13 min.  
Bled off for 5 min, No return blow  
B.O.B. in 15 min.  
Bled off for 5 min, Built to 2 1/2" return blow

## PRESSURE SUMMARY



Time (Min.)	Pressure (psig)	Temp (deg F)	Annotation
0	2223.91	105.36	Initial Hydro-static
1	31.05	104.33	Open To Flow (1)
30	122.21	106.99	Shut-In(1)
75	1245.78	112.49	End Shut-In(1)
76	130.05	111.76	Open To Flow (2)
135	237.56	114.05	Shut-In(2)
226	1195.53	116.69	End Shut-In(2)
228	2187.72	117.17	Final Hydro-static

## Recovery

Length (ft)	Description	Volume (bbl)
0.00	456 Feet Weak Gas In Pipe	0.00
108.00	ocm 2%O 98%M	1.51
126.00	ocmg 20%O 30%M 50%G	1.77
63.00	w cogm 5%W 15%O 20%G 60%M	0.88
63.00	w cogm 5%W 10%G 15%O 55%M	0.88
63.00	ocw m 2%O 48%W 50%M	0.88

## Gas Rates

	Choke (inches)	Pressure (psig)	Gas Rate (Mcf/d)



**TRILOBITE TESTING, INC.**

**DRILL STEM TEST REPORT**

Landmark Resources, Inc.

**6-17s-33w Scott, KS**

1616 Voss Rd STE 600  
Houston TX 77057-2641

**Krebs #2-6**

Job Ticket: 58516

**DST#: 1**

ATTN: Terry McLeod

Test Start: 2015.01.01 @ 13:40:00

**GENERAL INFORMATION:**

Formation: **Marmaton - Altamont**

Deviated: No Whipstock: ft (KB)

Time Tool Opened: 16:13:00

Time Test Ended: 22:37:15

Test Type: Conventional Bottom Hole (Initial)

Tester: Jace McKinney

Unit No: 75

Interval: **4418.00 ft (KB) To 4530.00 ft (KB) (TVD)**

Reference Elevations: 3090.00 ft (KB)

Total Depth: 4530.00 ft (KB) (TVD)

3085.00 ft (CF)

Hole Diameter: 7.88 inches Hole Condition: Poor

KB to GR/CF: 5.00 ft

**Serial #: 8650** **Outside**

Press@RunDepth: psig @ 4419.00 ft (KB)

Capacity: 8000.00 psig

Start Date: 2015.01.01

End Date:

2015.01.01

Last Calib.:

2015.01.01

Start Time: 13:40:15

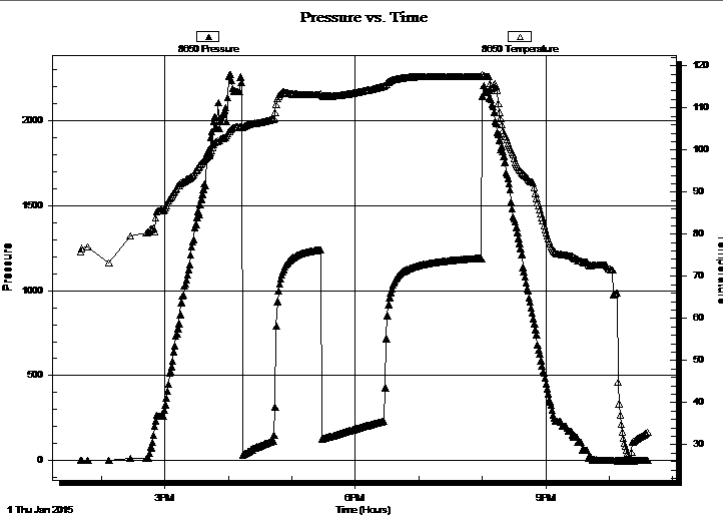
End Time:

22:37:00

Time On Btm:

Time Off Btm:

**TEST COMMENT:** B.O.B. in 13 min.  
Bled off for 5 min, No return blow  
B.O.B. in 15 min.  
Bled off for 5 min, Built to 2 1/2" return blow



**PRESSURE SUMMARY**

Time (Min.)	Pressure (psig)	Temp (deg F)	Annotation

**Recovery**

Length (ft)	Description	Volume (bbl)
0.00	456 Feet Weak Gas In Pipe	0.00
108.00	ocm 2%O 98%M	1.51
126.00	ocmg 20%O 30%M 50%G	1.77
63.00	w cgom 5%W 15%O 20%G 60%M	0.88
63.00	w cgom 5%W 10%G 15%O 55%M	0.88
63.00	ocw m 2%O 48%W 50%M	0.88

**Gas Rates**

Choke (inches)	Pressure (psig)	Gas Rate (Mcf/d)



**TRILOBITE  
TESTING, INC**

# DRILL STEM TEST REPORT

**TOOL DIAGRAM**

Landmark Resources, Inc.

**6-17s-33w Scott,KS**

1616 Voss Rd STE 600  
Houston TX 77057-2641

**Krebs #2-6**

Job Ticket: 58516

**DST#: 1**

ATTN: Terry McLeod

Test Start: 2015.01.01 @ 13:40:00

## Tool Information

Drill Pipe:	Length: 4412.73 ft	Diameter: 3.80 inches	Volume: 61.90 bbl	Tool Weight: 1500.00 lb
Heavy Wt. Pipe:	Length: 0.00 ft	Diameter: 0.00 inches	Volume: 0.00 bbl	Weight set on Packer: 30000.00 lb
Drill Collar:	Length: 0.00 ft	Diameter: 0.00 inches	Volume: 0.00 bbl	Weight to Pull Loose: 79000.00 lb
			<u>Total Volume: 61.90 bbl</u>	Tool Chased 0.00 ft
Drill Pipe Above KB:	17.23 ft			String Weight: Initial 52000.00 lb
Depth to Top Packer:	4418.00 ft			Final 59000.00 lb
Depth to Bottom Packer:	ft			
Interval between Packers:	112.00 ft			
Tool Length:	134.50 ft			
Number of Packers:	2	Diameter: 6.75 inches		

Tool Comments:

Tool Description	Length (ft)	Serial No.	Position	Depth (ft)	Accum. Lengths
------------------	-------------	------------	----------	------------	----------------

Change Over Sub	1.00			4396.50	
Shut In Tool	5.00			4401.50	
Hydraulic tool	5.00			4406.50	
Safety Joint	2.50			4409.00	
Packer	5.00			4414.00	22.50 Bottom Of Top Packer
Packer	4.00			4418.00	
Stubb	1.00			4419.00	
Recorder	0.00	8675	Inside	4419.00	
Recorder	0.00	8650	Outside	4419.00	
perforations	11.00			4430.00	
Change Over Sub	1.00			4431.00	
Drill Pipe	95.00			4526.00	
Change Over Sub	1.00			4527.00	
Bullnose	3.00			4530.00	112.00 Bottom Packers & Anchor

**Total Tool Length: 134.50**



**TRILOBITE  
TESTING, INC**

# DRILL STEM TEST REPORT

**FLUID SUMMARY**

Landmark Resources, Inc.

**6-17s-33w Scott,KS**

1616 Voss Rd STE 600  
Houston TX 77057-2641

**Krebs #2-6**

Job Ticket: 58516

**DST#: 1**

ATTN: Terry McLeod

Test Start: 2015.01.01 @ 13:40:00

## Mud and Cushion Information

Mud Type: Gel Chem

Cushion Type:

Oil API:

deg API

Mud Weight: 10.00 lb/gal

Cushion Length:

ft

Water Salinity:

40000 ppm

Viscosity: 51.00 sec/qt

Cushion Volume:

bbbl

Water Loss: 8.78 in<sup>3</sup>

Gas Cushion Type:

Resistivity: ohm.m

Gas Cushion Pressure:

psig

Salinity: 4200.00 ppm

Filter Cake: 1.00 inches

## Recovery Information

Recovery Table

Length ft	Description	Volume bbbl
0.00	456 Feet Weak Gas In Pipe	0.000
108.00	ocm 2%O 98%M	1.515
126.00	ocmg 20%O 30%M 50%G	1.767
63.00	w cogm 5%W 15%O 20%G 60%M	0.884
63.00	w cgom 5%W 10%G 15%O 55%M	0.884
63.00	ocw m 2%O 48%W 50%M	0.884

Total Length: 423.00 ft      Total Volume: 5.934 bbl

Num Fluid Samples: 0

Num Gas Bombs: 0

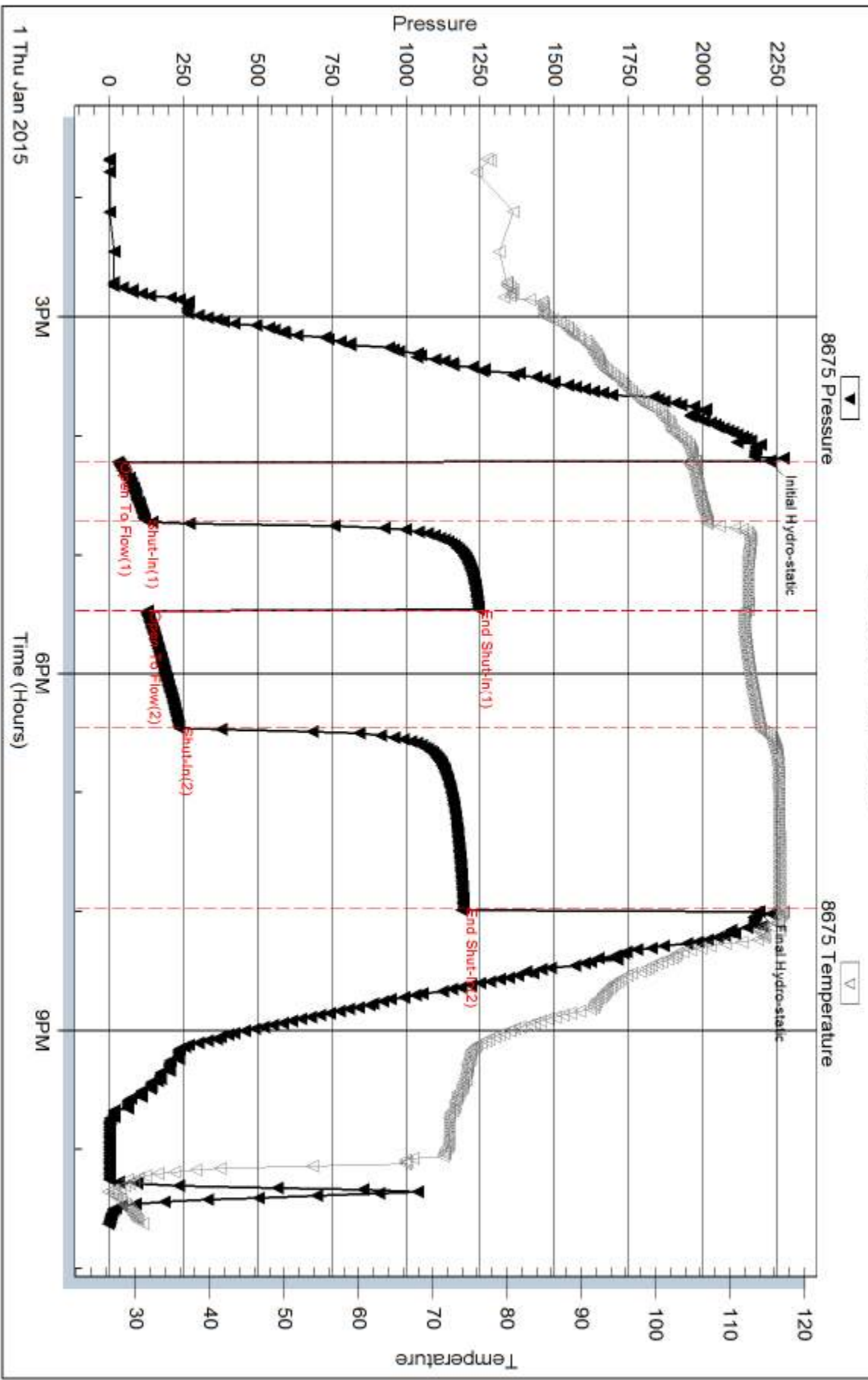
Serial #:

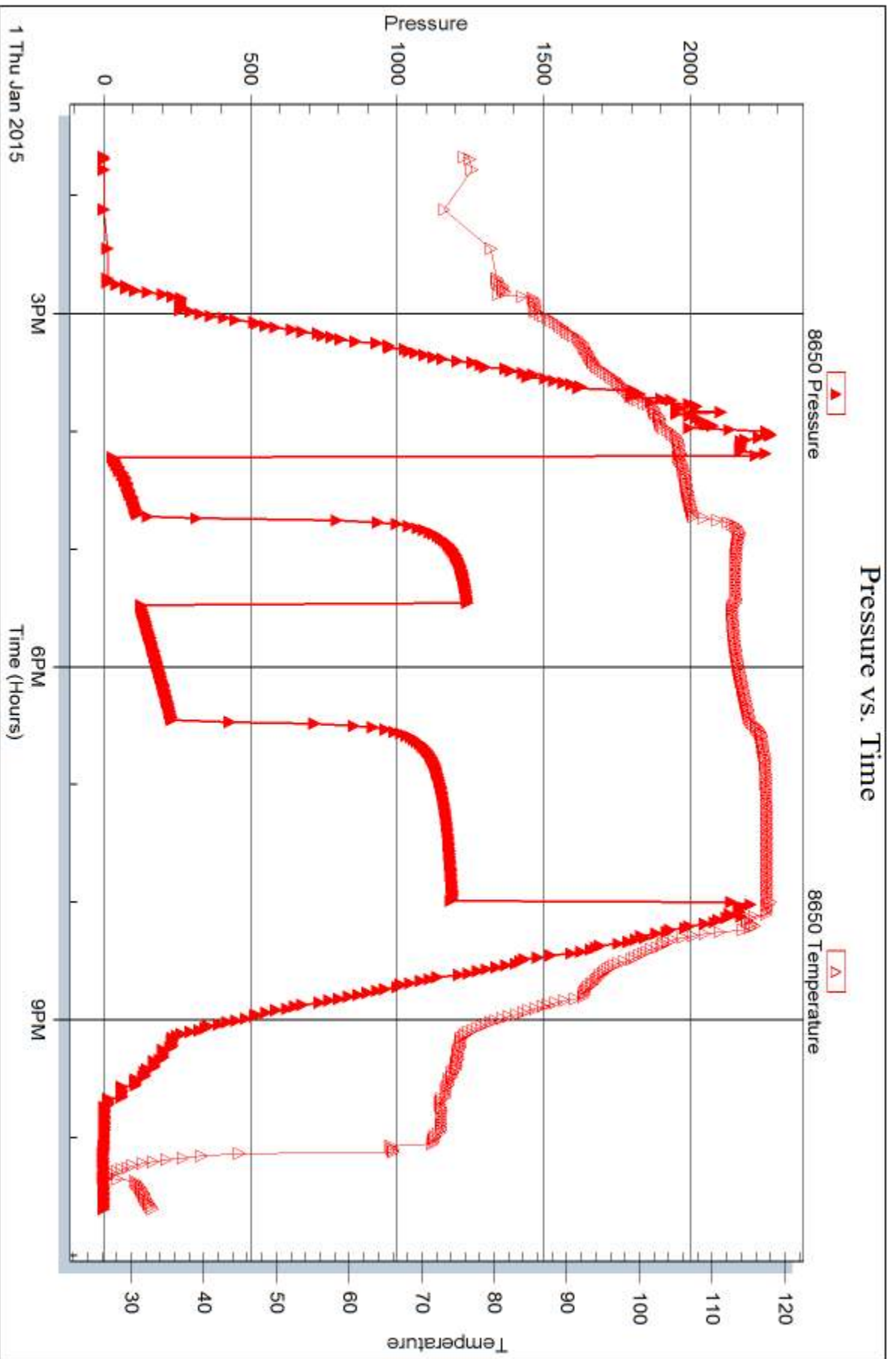
Laboratory Name:

Laboratory Location:

Recovery Comments: RW: .50 @ 25 F = 40,000

### Pressure vs. Time







## DRILL STEM TEST REPORT

Prepared For: **Landmark Resources, Inc.**

1616 Voss Rd STE 600  
Houston TX 77057-2641

ATTN: Terry McLeod

### **Krebs #2-6**

### **6-17s-33w Scott,KS**

Start Date: 2015.01.02 @ 22:30:00

End Date: 2015.01.03 @ 07:33:00

Job Ticket #: 58517                      DST #: 2

Trilobite Testing, Inc  
1515 Commerce Parkway Hays, KS 67601  
ph: 785-625-4778 fax: 785-625-5620

Printed: 2015.01.05 @ 10:06:51





**TRILOBITE TESTING, INC**

# DRILL STEM TEST REPORT

Landmark Resources, Inc.

**6-17s-33w Scott,KS**

1616 Voss Rd STE 600  
Houston TX 77057-2641

**Krebs #2-6**

Job Ticket: 58517

**DST#: 2**

ATTN: Terry McLeod

Test Start: 2015.01.02 @ 22:30:00

## GENERAL INFORMATION:

Formation: **Fort Scott - Johnson**

Deviated: No Whipstock: ft (KB)

Time Tool Opened: 01:21:00

Time Test Ended: 07:33:00

Test Type: Conventional Bottom Hole (Reset)

Tester: Jace McKinney

Unit No: 75

**Interval: 4578.00 ft (KB) To 4730.00 ft (KB) (TVD)**

Reference Elevations: 3090.00 ft (KB)

Total Depth: 4730.00 ft (KB) (TVD)

3085.00 ft (CF)

Hole Diameter: 7.88 inches Hole Condition: Poor

KB to GR/CF: 5.00 ft

**Serial #: 8675**

**Inside**

Press@RunDepth: 99.43 psig @ 4579.00 ft (KB)

Capacity: 8000.00 psig

Start Date: 2015.01.02

End Date:

2015.01.03

Last Calib.:

2015.01.03

Start Time: 22:30:15

End Time:

07:33:00

Time On Btm:

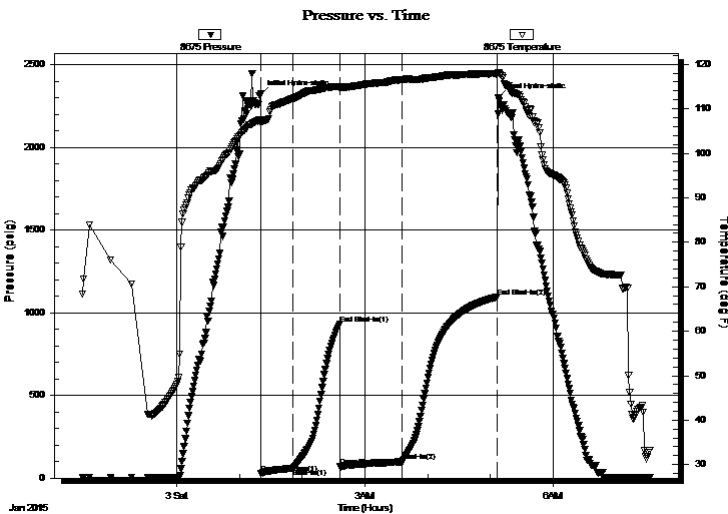
2015.01.03 @ 01:20:30

Time Off Btm:

2015.01.03 @ 05:07:45

**TEST COMMENT:** B.O.B. in 20 min.  
Bled off for 5 min, No return blow  
B.O.B. in 36 min.  
Bled off for 5 min, No return blow

## PRESSURE SUMMARY



Time (Min.)	Pressure (psig)	Temp (deg F)	Annotation
0	2322.95	107.62	Initial Hydro-static
1	28.72	106.90	Open To Flow (1)
31	60.40	112.33	Shut-In(1)
76	930.51	115.05	End Shut-In(1)
76	69.88	114.52	Open To Flow (2)
135	99.43	116.56	Shut-In(2)
226	1095.70	117.77	End Shut-In(2)
228	2301.12	118.13	Final Hydro-static

## Recovery

Length (ft)	Description	Volume (bbl)
0.00	156 Feet on weak gas in pipe	0.00
158.00	gcom 5%G 5%O 90%M	2.22

## Gas Rates

	Choke (inches)	Pressure (psig)	Gas Rate (Mcf/d)

\* Recovery from multiple tests



**TRILOBITE  
TESTING, INC**

# DRILL STEM TEST REPORT

Landmark Resources, Inc.

**6-17s-33w Scott,KS**

1616 Voss Rd STE 600  
Houston TX 77057-2641

**Krebs #2-6**

Job Ticket: 58517

**DST#: 2**

ATTN: Terry McLeod

Test Start: 2015.01.02 @ 22:30:00

## GENERAL INFORMATION:

Formation: **Fort Scott - Johnson**

Deviated: No Whipstock: ft (KB)

Time Tool Opened: 01:21:00

Time Test Ended: 07:33:00

Test Type: Conventional Bottom Hole (Reset)

Tester: Jace McKinney

Unit No: 75

**Interval: 4578.00 ft (KB) To 4730.00 ft (KB) (TVD)**

Total Depth: 4730.00 ft (KB) (TVD)

Hole Diameter: 7.88 inches Hole Condition: Poor

Reference Elevations: 3090.00 ft (KB)

3085.00 ft (CF)

KB to GR/CF: 5.00 ft

**Serial #: 8650 Outside**

Press@RunDepth: psig @ 4579.00 ft (KB)

Start Date: 2015.01.02

End Date:

2015.01.03

Start Time: 22:30:15

End Time:

07:32:45

Capacity: 8000.00 psig

Last Calib.:

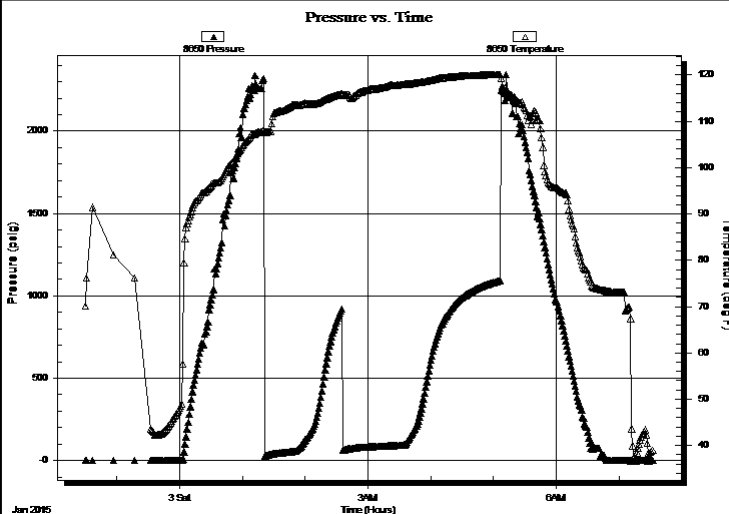
2015.01.03

Time On Btm:

Time Off Btm:

**TEST COMMENT:** B.O.B. in 20 min.  
Bled off for 5 min, No return blow  
B.O.B. in 36 min.  
Bled off for 5 min, No return blow

## PRESSURE SUMMARY



Time (Min.)	Pressure (psig)	Temp (deg F)	Annotation

## Recovery

Length (ft)	Description	Volume (bbl)
0.00	156 Feet on weak gas in pipe	0.00
158.00	gcom 5%G 5%O 90%M	2.22

## Gas Rates

	Choke (inches)	Pressure (psig)	Gas Rate (Mcf/d)

\* Recovery from multiple tests



**TRILOBITE  
TESTING, INC**

# DRILL STEM TEST REPORT

**TOOL DIAGRAM**

Landmark Resources, Inc.

**6-17s-33w Scott,KS**

1616 Voss Rd STE 600  
Houston TX 77057-2641

**Krebs #2-6**

Job Ticket: 58517

**DST#: 2**

ATTN: Terry McLeod

Test Start: 2015.01.02 @ 22:30:00

## Tool Information

Drill Pipe:	Length: 4570.82 ft	Diameter: 3.80 inches	Volume: 64.12 bbl	Tool Weight:	1500.00 lb
Heavy Wt. Pipe:	Length: 0.00 ft	Diameter: 0.00 inches	Volume: 0.00 bbl	Weight set on Packer:	30000.00 lb
Drill Collar:	Length: 0.00 ft	Diameter: 0.00 inches	Volume: 0.00 bbl	Weight to Pull Loose:	79000.00 lb
			<u>Total Volume: 64.12 bbl</u>	Tool Chased	0.00 ft
Drill Pipe Above KB:	15.32 ft			String Weight: Initial	56000.00 lb
Depth to Top Packer:	4578.00 ft			Final	59000.00 lb
Depth to Bottom Packer:	ft				
Interval between Packers:	152.00 ft				
Tool Length:	174.50 ft				
Number of Packers:	2	Diameter: 6.75 inches			

Tool Comments:

## Tool Description

Tool Description	Length (ft)	Serial No.	Position	Depth (ft)	Accum. Lengths
Change Over Sub	1.00			4556.50	
Shut In Tool	5.00			4561.50	
Hydraulic tool	5.00			4566.50	
Safety Joint	2.50			4569.00	
Packer	5.00			4574.00	22.50 Bottom Of Top Packer
Packer	4.00			4578.00	
Stubb	1.00			4579.00	
Recorder	0.00	8675	Inside	4579.00	
Recorder	0.00	8650	Outside	4579.00	
perforations	14.00			4593.00	
Change Over Sub	1.00			4594.00	
Drill Pipe	127.00			4721.00	
Change Over Sub	1.00			4722.00	
Bullnose	8.00			4730.00	152.00 Bottom Packers & Anchor

**Total Tool Length: 174.50**



**TRILOBITE  
TESTING, INC**

# DRILL STEM TEST REPORT

**FLUID SUMMARY**

Landmark Resources, Inc.

**6-17s-33w Scott,KS**

1616 Voss Rd STE 600  
Houston TX 77057-2641

**Krebs #2-6**

Job Ticket: 58517

**DST#: 2**

ATTN: Terry McLeod

Test Start: 2015.01.02 @ 22:30:00

## Mud and Cushion Information

Mud Type: Gel Chem  
Mud Weight: 9.00 lb/gal  
Viscosity: 55.00 sec/qt  
Water Loss: 9.19 in<sup>3</sup>  
Resistivity: ohm.m  
Salinity: 5000.00 ppm  
Filter Cake: 1.00 inches

Cushion Type:  
Cushion Length: ft  
Cushion Volume: bbl  
Gas Cushion Type:  
Gas Cushion Pressure: psig

Oil API: deg API  
Water Salinity: ppm

## Recovery Information

Recovery Table

Length ft	Description	Volume bbl
0.00	156 Feet on weak gas in pipe	0.000
158.00	gcom 5%G 5%O 90%M	2.216

Total Length: 158.00 ft      Total Volume: 2.216 bbl

Num Fluid Samples: 0

Num Gas Bombs: 0

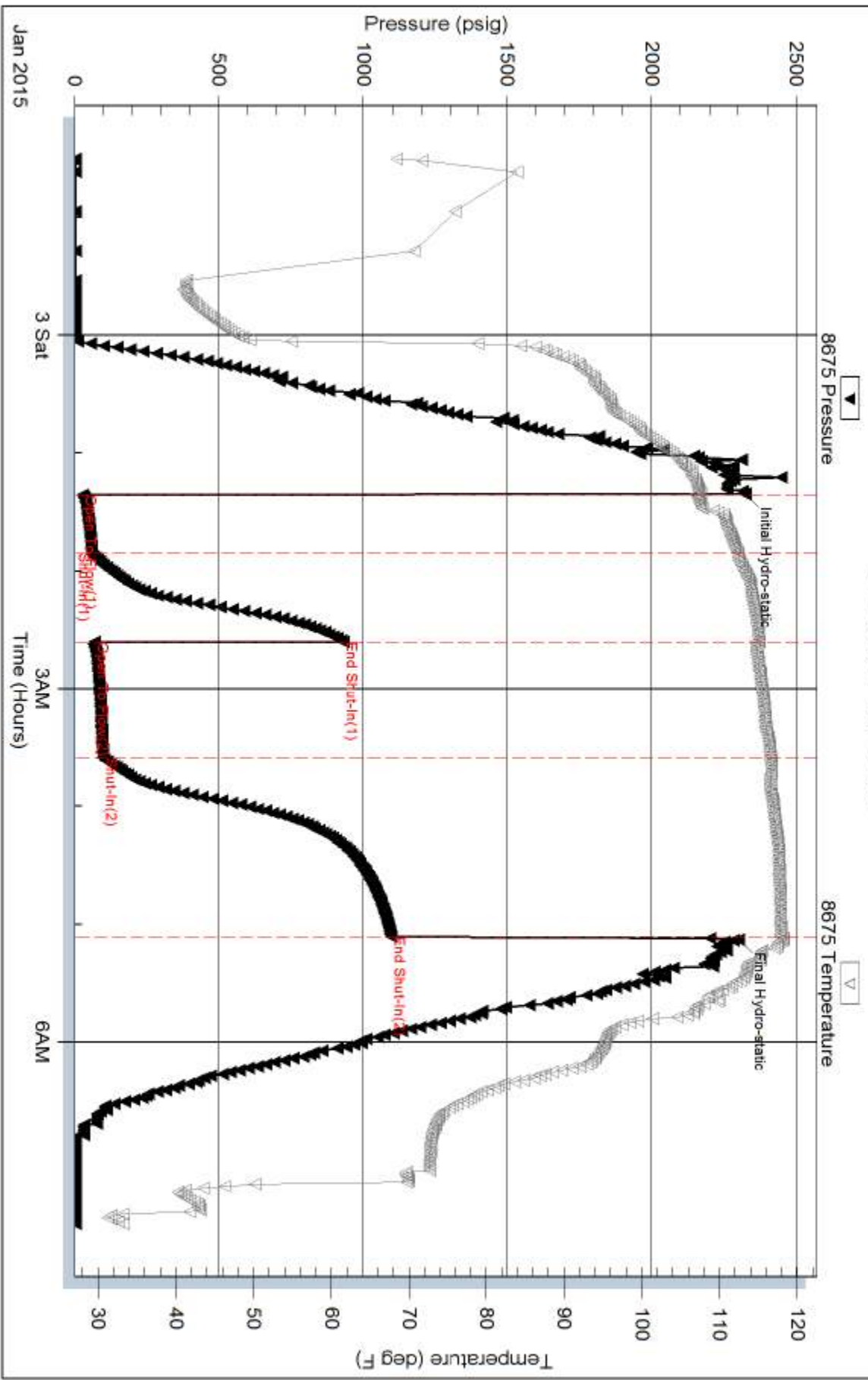
Serial #:

Laboratory Name:

Laboratory Location:

Recovery Comments:

### Pressure vs. Time

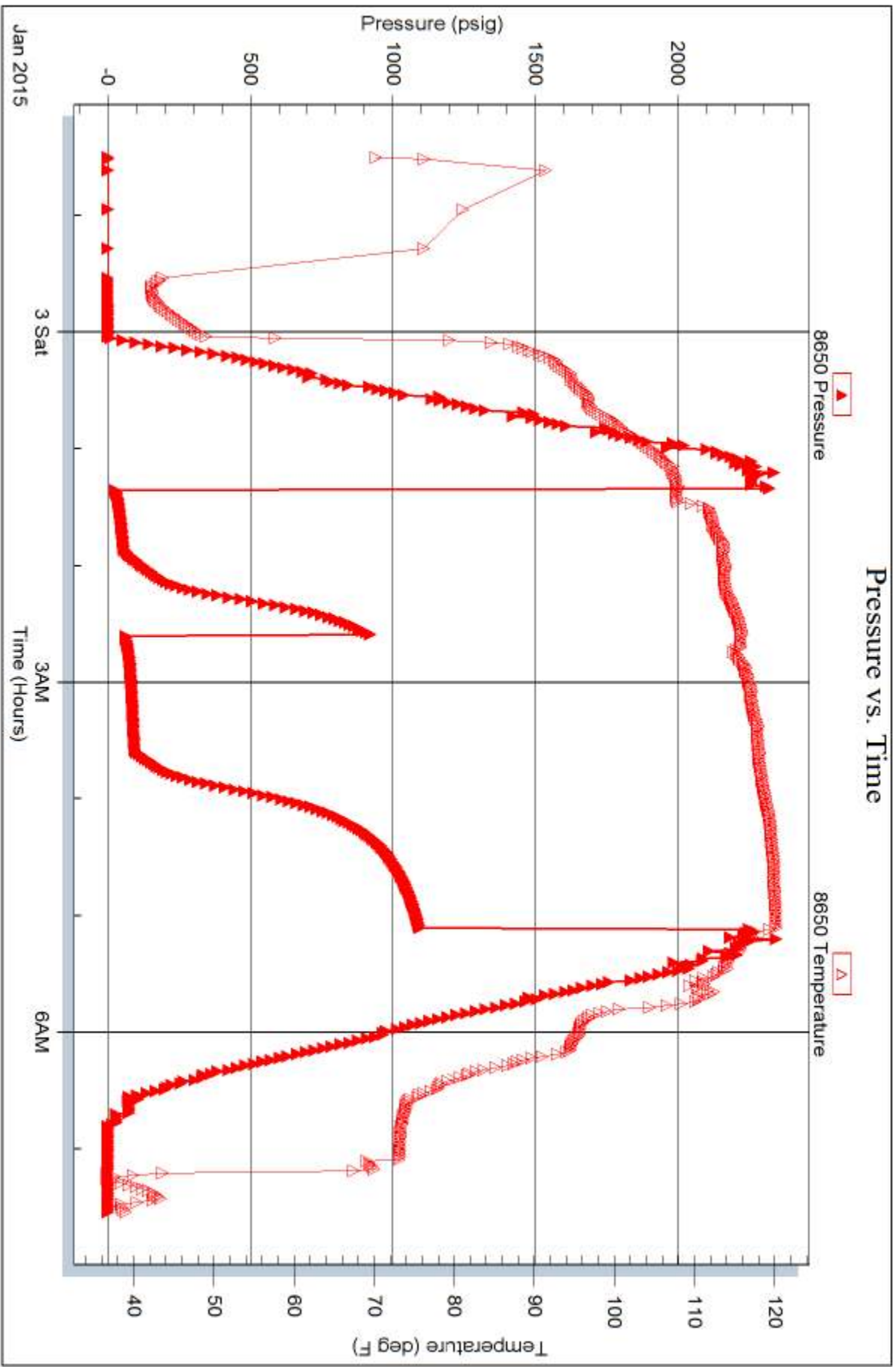


Serial #: 8650

Outside Landmark Resources, Inc.

Kebs #2-6

DST Test Number: 2



Trilobite Testing, Inc

Ref. No: 58517

Printed: 2015.01.05 @ 10:06:53



# TRILOBITE TESTING INC.

1515 Commerce Parkway • Hays, Kansas 67601

## Test Ticket

NO. 58516

4/10

Well Name & No. Krelo 2-6 Test No. 1 Date 1/1/15  
 Company Landmark Resources, Inc Elevation ~~3090~~ 3085 GL  
 Address 16016 S Voss Rd STE 600, Houston TX, 77057-2647  
 Co. Rep / Geo. Terry McLeod Rig LD Drilling  
 Location: Sec. 6 Twp. 17S Rge. 33W Co. Scott County State KS

Interval Tested 4418-4530 Zone Tested Marmaton - Altament  
 Anchor Length 112 Drill Pipe Run 4412.73 Mud Wt. 9.5  
 Top Packer Depth 4414 Drill Collars Run \_\_\_\_\_ Vis 51  
 Bottom Packer Depth 4418 Wt. Pipe Run \_\_\_\_\_ WL 8.8  
 Total Depth 4530 Chlorides 4200 ppm System LCM 1#

Blow Description B.O.B. in 13 min.  
Bled off for 5 min. no return below

B.O.B. in 15 min.  
Bled off for 5 min. Built to 2 1/2" return below

Rec	Feet of	%gas	%oil	%water	%mud
<u>108</u>	<u>OCM</u>	<u>2</u>		<u>98</u>	
<u>126</u>	<u>OCMC</u>	<u>50</u>	<u>20</u>	<u>30</u>	
<u>63</u>	<u>WCOGM</u>	<u>20</u>	<u>15</u>	<u>5</u>	<u>60</u>
<u>63</u>	<u>WCOOM</u>	<u>10</u>	<u>15</u>	<u>5</u>	<u>55</u>
<u>63</u>	<u>OCWM</u>	<u>2</u>	<u>48</u>	<u>50</u>	

Rec Total 423 BHT 117 Gravity \_\_\_\_\_ API RW 50 @ 25 °F Chlorides 40,000 ppm

(A) Initial Hydrostatic 2,224  Test 1150 T-On Location 12:50  
 (B) First Initial Flow 31  Jars \_\_\_\_\_ T-Started 13:40  
 (C) First Final Flow 122  Safety Joint 75 T-Open 16:15  
 (D) Initial Shut-In 1,246  Circ Sub N/C T-Pulled 20:00  
 (E) Second Initial Flow 130  Hourly Standby \_\_\_\_\_ T-Out 22:37  
 (F) Second Final Flow 238  Mileage 32 RT x 2 49.60  
 (G) Final Shut-In 1,196  Sampler \_\_\_\_\_  
 (H) Final Hydrostatic 2,188  Straddle \_\_\_\_\_  
 Shale Packer 250  Ruined Shale Packer \_\_\_\_\_  
 Extra Packer \_\_\_\_\_  Ruined Packer \_\_\_\_\_  
 Extra Recorder \_\_\_\_\_  Extra Copies \_\_\_\_\_

Initial Open 30  
 Initial Shut-In 45  
 Final Flow 60  
 Final Shut-In 90  
 Accessibility \_\_\_\_\_  
 Sub Total 1574.20  
 Sub Total \_\_\_\_\_  
 Total 1574.20  
 MP/DST Disc't \_\_\_\_\_

Approved By Terry McLeod Our Representative \_\_\_\_\_

TriLOBITE TESTING INC. shall not be liable for damaged of any kind of the property or personnel of the one for whom a test is made, or for any loss suffered or sustained, directly or indirectly, through the use of its equipment, or its statements or opinion concerning the results of any test, tools lost or damaged in the hole shall be paid for at cost by the party for whom the test is made.



# TRILOBITE TESTING INC.

1515 Commerce Parkway • Hays, Kansas 67601

## Test Ticket

NO. 58517

4/10

Well Name & No. Kreles 2-6 Test No. 2 Date 1/2/15 1/3/15  
 Company Landmark Resources, Inc. Elevation 3090 KB 3085 GL  
 Address 1166 S Voss Rd STE 600, Houston TX, 77057-2647  
 Co. Rep / Geo. Terry McLeod Rig LD Drilling  
 Location: Sec. 6 Twp. 17s Rge. 33w Co. Scott County State KS

Interval Tested 4578 - 4730 Zone Tested Fort Scott - Johnson Zone  
 Anchor Length 152 Drill Pipe Run 4570.82 Mud Wt. 9.2  
 Top Packer Depth 4574 Drill Collars Run \_\_\_\_\_ Vis 55  
 Bottom Packer Depth 4578 Wt. Pipe Run \_\_\_\_\_ WL 9.2  
 Total Depth 4730 Chlorides 5,000 ppm System LCM 2#

Blow Description B.O.B. in 20 min.  
Bled off for 5 min. No return below

B.O.B. in ~~20~~ 36 min.  
Bled off for 5 min. No return below

Rec	Feet of	%gas	%oil	%water	%mud
<u>0</u>	<u>156' Weak Coas In Pipe</u>				
<u>158</u>	<u>gcom</u>	<u>5</u>	<u>5</u>		<u>90</u>
Rec	Feet of	%gas	%oil	%water	%mud
Rec	Feet of	%gas	%oil	%water	%mud
Rec	Feet of	%gas	%oil	%water	%mud

Rec Total 158 BHT 118 Gravity \_\_\_\_\_ API RW \_\_\_\_\_ @ \_\_\_\_\_ °F Chlorides \_\_\_\_\_ ppm  
 (A) Initial Hydrostatic 2,323  Test 1150 T-On Location 21:00  
 (B) First Initial Flow 29  Jars \_\_\_\_\_ T-Started 22:30  
 (C) First Final Flow 60  Safety Joint 75 T-Open 01:22  
 (D) Initial Shut-In 931  Circ Sub w/c T-Pulled 05:07  
 (E) Second Initial Flow 70  Hourly Standby 1/2 hour T-Out 07:33  
 (F) Second Final Flow 99  Mileage 32 RT X 2 49.60  
 (G) Final Shut-In 1,096  Sampler \_\_\_\_\_ 49.60  
 (H) Final Hydrostatic 2,301  Straddle \_\_\_\_\_  
 Shale Packer 250  Ruined Shale Packer \_\_\_\_\_  
 Extra Packer \_\_\_\_\_  Ruined Packer \_\_\_\_\_  
 Extra Recorder \_\_\_\_\_  Extra Copies \_\_\_\_\_

Initial Open 30  
 Initial Shut-In 45  
 Final Flow 60  
 Final Shut-In 90  
 Sub Total 1574.20  
 Total 1574.20  
 MP/DST Disc't \_\_\_\_\_

Approved By Terry McLeod Our Representative \_\_\_\_\_

Trilobite Testing Inc. shall not be liable for damaged of any kind of the property or personnel of the one for whom a test is made, or for any loss suffered or sustained, directly or indirectly, through the use of its equipment, or its statements or opinion concerning the results of any test, tools lost or damaged in the hole shall be paid for at cost by the party for whom the test is made.