



**TRILOBITE  
TESTING, INC**

# DRILL STEM TEST REPORT

Samuel Gary Jr. & Associates

**9/5s/22w Norton KS**

1515 Wynkoop St. STE 700  
Denver, CO 80202

**Jacobs Trust #1-9**

Job Ticket: 60781

**DST#: 3**

ATTN: Dan Pritchard

Test Start: 2014.11.08 @ 08:08:00

## GENERAL INFORMATION:

Formation: **LKC "B - C"**

Deviated: No Whipstock: ft (KB)

Time Tool Opened: 09:57:30

Time Test Ended: 16:35:00

Test Type: Conventional Bottom Hole (Reset)

Tester: James Winder

Unit No: 57

**Interval: 3343.00 ft (KB) To 3378.00 ft (KB) (TVD)**

Reference Elevations: 2179.00 ft (KB)

Total Depth: 3378.00 ft (KB) (TVD)

2171.00 ft (CF)

Hole Diameter: 7.88 inches Hole Condition: Fair

KB to GR/CF: 8.00 ft

**Serial #: 8791**

**Inside**

Press@RunDepth: 120.78 psig @ 3344.00 ft (KB)

Capacity: 8000.00 psig

Start Date: 2014.11.08

End Date:

2014.11.08

Last Calib.:

2014.11.08

Start Time: 08:08:05

End Time:

16:34:59

Time On Btm:

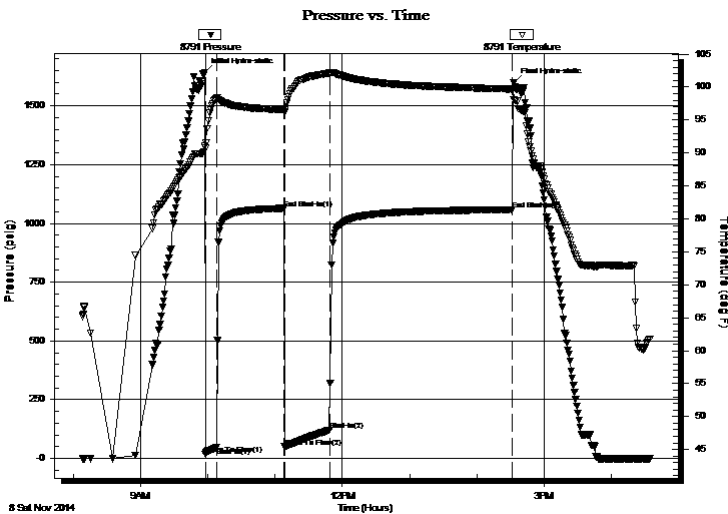
2014.11.08 @ 09:57:15

Time Off Btm:

2014.11.08 @ 14:33:00

**TEST COMMENT:** 10 - IF: Blow built to 4"  
60 - ISI: No blow back  
40 - FF: Blow built to 5 1/4"  
160 - FSI: No blow back

## PRESSURE SUMMARY



Time (Min.)	Pressure (psig)	Temp (deg F)	Annotation
0	1642.61	91.09	Initial Hydro-static
1	18.47	90.75	Open To Flow (1)
11	46.73	98.32	Shut-In(1)
71	1064.12	96.60	End Shut-In(1)
71	49.22	96.22	Open To Flow (2)
112	120.78	102.09	Shut-In(2)
274	1058.57	99.69	End Shut-In(2)
276	1600.70	98.09	Final Hydro-static

## Recovery

Length (ft)	Description	Volume (bbl)
218.00	SMCW w/trace oil 96%w, 4%m	2.78
1.00	Oil 100%o	0.01
0.00	GIP = 155'	0.00

\* Recovery from multiple tests

## Gas Rates

Choke (inches)	Pressure (psig)	Gas Rate (Mcf/d)







**TRILOBITE  
TESTING, INC**

# DRILL STEM TEST REPORT

**FLUID SUMMARY**

Samuel Gary Jr. & Associates

**9/5s/22w Norton KS**

1515 Wynkoop St. STE 700  
Denver, CO 80202

**Jacobs Trust #1-9**

Job Ticket: 60781

**DST#: 3**

ATTN: Dan Pritchard

Test Start: 2014.11.08 @ 08:08:00

## Mud and Cushion Information

Mud Type: Gel Chem

Cushion Type:

Oil API:

deg API

Mud Weight: 9.00 lb/gal

Cushion Length:

ft

Water Salinity:

68000 ppm

Viscosity: 77.00 sec/qt

Cushion Volume:

bbbl

Water Loss: 7.60 in<sup>3</sup>

Gas Cushion Type:

Resistivity: ohm.m

Gas Cushion Pressure:

psig

Salinity: 500.00 ppm

Filter Cake: 1.00 inches

## Recovery Information

Recovery Table

Length ft	Description	Volume bbl
218.00	SMCW w /trace oil 96%w , 4%m	2.776
1.00	Oil 100%o	0.014
0.00	GIP = 155'	0.000

Total Length: 219.00 ft      Total Volume: 2.790 bbl

Num Fluid Samples: 0

Num Gas Bombs: 0

Serial #:

Laboratory Name:

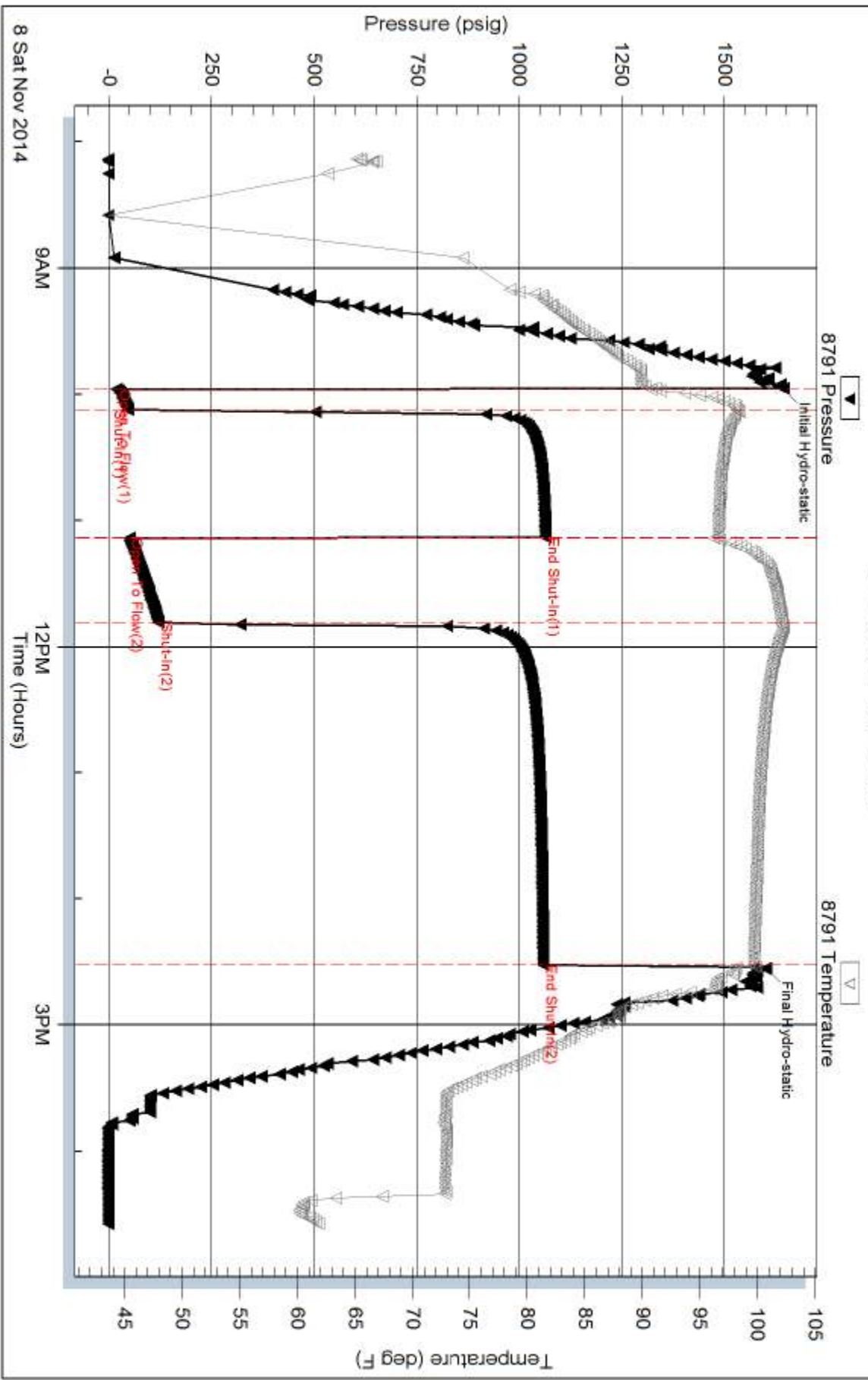
Laboratory Location:

Recovery Comments: RW = . 124 ohms @ 64 deg F Chlorides = 68,000 ppm

Sampler = 410 PSI, 2200 mL Water 98%w , 2%m, trace oil, 200 mL oil

Signs of Very low level H2S gas, too low to register on meter but had odor and staining of equipment (recorders, perf)

### Pressure vs. Time

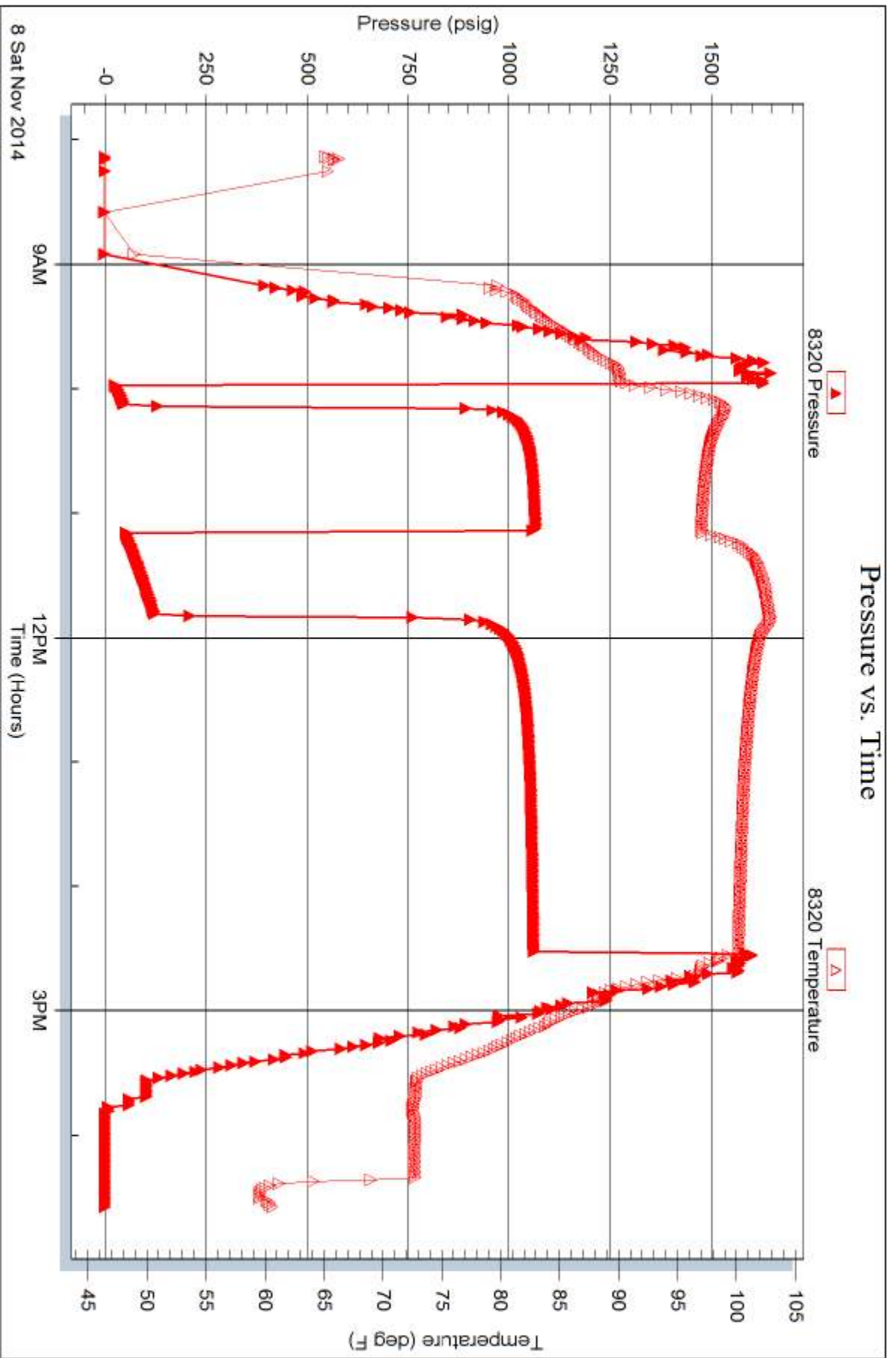


Serial #: 8320

Outside Samuel Gary Jr. & Associates

Jacobs Trust #1-9

DST Test Number: 3



Trilobite Testing, Inc

Ref. No: 60781

Printed: 2014.11.08 @ 22:58:11

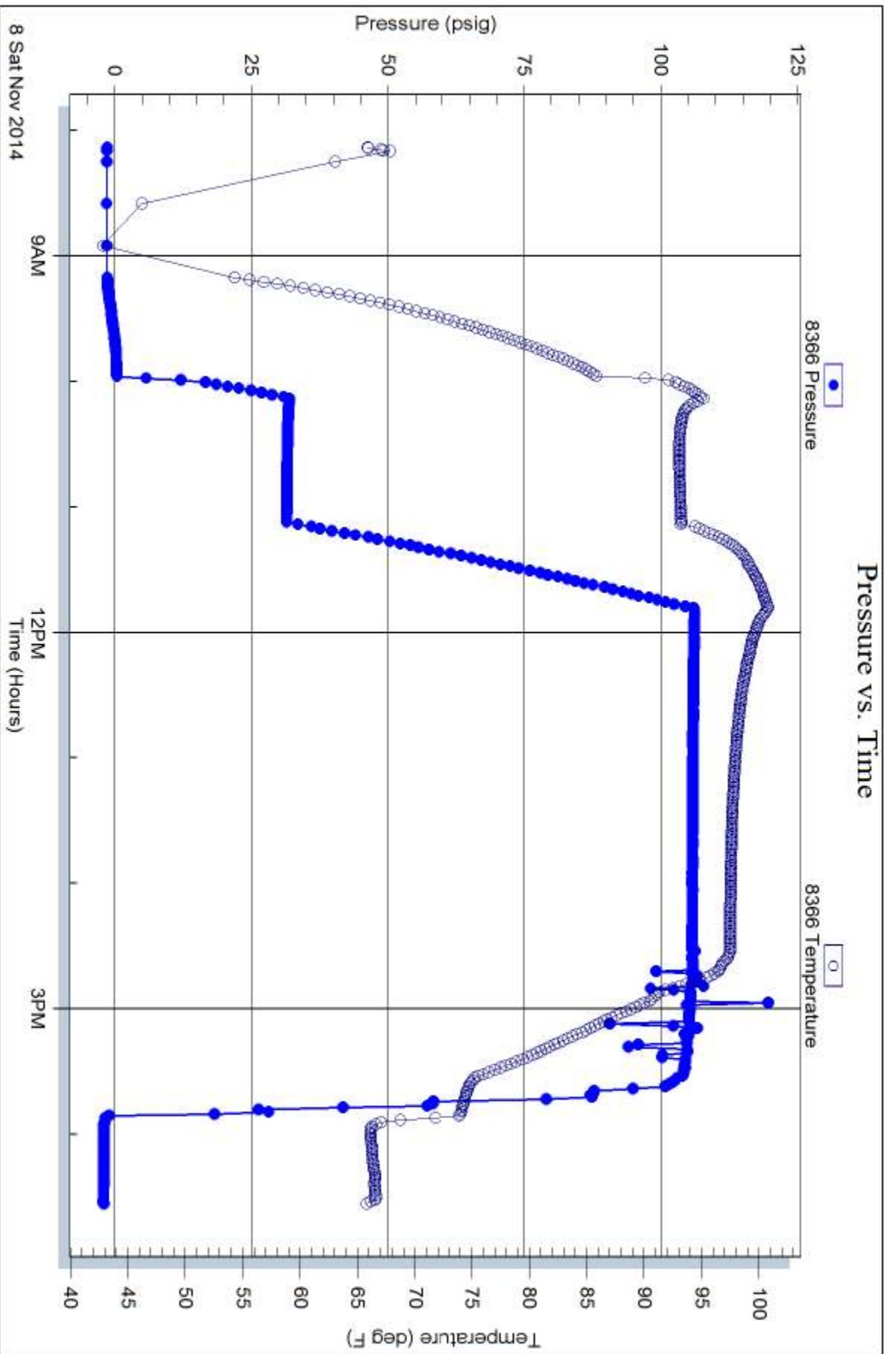
Serial #: 8366

Fluid

Samuel Gary Jr. & Associates

Jacobs Trust #1-9

DST Test Number: 3



Trilobite Testing, Inc

Ref. No: 60781

Printed: 2014.11.08 @ 22:58:11