



TRILOBITE TESTING, INC.

DRILL STEM TEST REPORT

Source Energy MidCom, LLC.

16-24s-2e Harvey, Co. Ks.

1805 Shea Center Dr. STE 100
Highland Ranch, Co. 80129

Nattier # 16-34-24

Job Ticket: 57807

DST#: 1

ATTN: Roger Martin

Test Start: 2015.02.06 @ 00:46:48

GENERAL INFORMATION:

Formation: **Burgess Sand**

Deviated: No Whipstock: 0.00 ft (KB)

Time Tool Opened: 07:39:03

Time Test Ended: 23:34:33

Test Type: Conventional Bottom Hole (Initial)

Tester: Matt Smith

Unit No: 53

Interval: 2842.00 ft (KB) To 2871.00 ft (KB) (TVD)

Reference Elevations: 1445.00 ft (KB)

Total Depth: 2871.00 ft (KB) (TVD)

1435.00 ft (CF)

Hole Diameter: 8.75 inches Hole Condition: Fair

KB to GR/CF: 10.00 ft

Serial #: 8931 Inside

Press @ Run Depth: 629.27 psig @ 2843.00 ft (KB)

Capacity: 8000.00 psig

Start Date: 2015.02.06

End Date: 2015.02.06

Last Calib.: 2015.02.06

Start Time: 00:46:53

End Time: 23:34:32

Time On Btm: 2015.02.06 @ 07:30:18

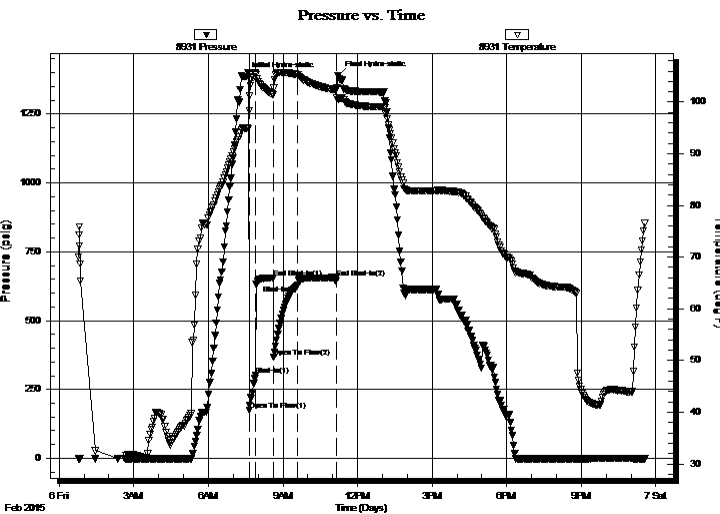
Time Off Btm: 2015.02.06 @ 11:13:03

TEST COMMENT: IF: Fair - Strong blow . B.O.B. in 1 min 40 secs.

IS: No blow . Bleed off in 3 mins.

FF: Fair - Strong blow . B.O.B. in 1 1/2 mins. G.T.S. in 3 mins. Gauged gas. See gas report.

FS: Weak - Fair blow . Surf., - 4 1/2". Blow back started 13 mins into shut in.



PRESSURE SUMMARY

Time (Min.)	Pressure (psig)	Temp (deg F)	Annotation
0	1386.39	94.94	Initial Hydro-static
9	173.78	101.17	Open To Flow (1)
24	300.61	105.60	Shut-In(1)
67	655.02	101.44	End Shut-In(1)
68	367.31	102.70	Open To Flow (2)
126	629.27	105.26	Shut-In(2)
219	656.36	102.33	End Shut-In(2)
223	1389.20	100.47	Final Hydro-static

Recovery

Length (ft)	Description	Volume (bbl)
312.00	OspecMCW 5% m 95% w	1.53
360.00	SltOMCW 4% m 96% w	2.66
360.00	OCMW 5% o 15% m 80% w	2.66
361.00	GOMCW 5% g 5% o 35% m 55% w	2.67
0.00	G.T.S. G.I.P 100% g	0.00
0.00	RW .21 @ 48 = 85000 chlorides ppm	0.00

Gas Rates

	Choke (inches)	Pressure (psig)	Gas Rate (Mcf/d)
First Gas Rate	0.13	2.00	6.14
Last Gas Rate	0.13	0.00	5.39
Max. Gas Rate	0.13	2.00	6.14



**TRILOBITE
TESTING, INC.**

DRILL STEM TEST REPORT

FLUID SUMMARY

Source Energy MidCom,LLC.

16-24s-2e Harvey, Co. Ks.

1805 Shea Center Dr.STE 100
Highland Ranch, Co.80129

Nattier # 16-34-24

Job Ticket: 57807

DST#: 1

ATTN: Roger Martin

Test Start: 2015.02.06 @ 00:46:48

Mud and Cushion Information

Mud Type: Gel Chem

Cushion Type:

Oil API:

deg API

Mud Weight: 9.00 lb/gal

Cushion Length:

ft

Water Salinity:

85000 ppm

Viscosity: 48.00 sec/qt

Cushion Volume:

bbf

Water Loss: 8.79 in³

Gas Cushion Type:

Resistivity: 0.21 ohm.m

Gas Cushion Pressure:

psig

Salinity: 1300.00 ppm

Filter Cake: 0.20 inches

Recovery Information

Recovery Table

Length ft	Description	Volume bbf
312.00	OspecMCW 5%m 95%w	1.534
360.00	SlitOMCW 4%m 96%w	2.664
360.00	OCMW5%o 15%m 80%w	2.664
361.00	GOMCW 5%g 5%o 35%m 55%w	2.671
0.00	G.T.S. G.I.P 100% g	0.000
0.00	RW .21 @ 48 = 85000 chlorides ppm	0.000

Total Length: 1393.00 ft

Total Volume: 9.533 bbf

Num Fluid Samples: 1

Num Gas Bombs: 1

Serial #: MAS Pratt

Laboratory Name: Caraway

Laboratory Location: Liberal, KS

Recovery Comments:



**TRILOBITE
TESTING, INC.**

DRILL STEM TEST REPORT

GAS RATES

Source Energy MidCom, LLC.

16-24s-2e Harvey, Co. Ks.

1805 Shea Center Dr. STE 100
Highland Ranch, Co. 80129

Nattier # 16-34-24

Job Ticket: 57807

DST#: 1

ATTN: Roger Martin

Test Start: 2015.02.06 @ 00:46:48

Gas Rates Information

Temperature: 59 (deg F)
Relative Density: 0.65
Z Factor: 0.8

Gas Rates Table

Flow Period	Elapsed Time	Choke (inches)	Pressure (psig)	Gas Rate (Mcf/d)
2	10	0.13	2.00	6.14
2	20	0.13	2.00	6.14
2	30	0.13	2.00	6.14
2	40	0.13	1.00	5.76
2	50	0.13	0.00	5.39
2	60	0.13	0.00	5.39

Pressure vs. Time

