



**TRILOBITE TESTING, INC.**

# DRILL STEM TEST REPORT

Russell Oil, Inc.  
 PO Box 8050  
 Edmond OK, 73083  
 ATTN: Kitt Noah

**6-16s-34w Scott Co, KS**

**Edwards Trust G 6-1**

Job Ticket: 58507 **DST#: 2**

Test Start: 2014.12.02 @ 10:05:00

## GENERAL INFORMATION:

Formation: **Johnson Zone**  
 Deviated: No Whipstock: ft (KB)  
 Time Tool Opened: 12:47:45  
 Time Test Ended: 18:06:00  
 Interval: **4592.00 ft (KB) To 4618.00 ft (KB) (TVD)**  
 Total Depth: 4618.00 ft (KB) (TVD)  
 Hole Diameter: 7.88 inches Hole Condition: Poor  
 Test Type: Conventional Bottom Hole (Reset)  
 Tester: Jace McKinney  
 Unit No: 75  
 Reference Elevations: 3084.00 ft (KB)  
 3073.00 ft (CF)  
 KB to GR/CF: 11.00 ft

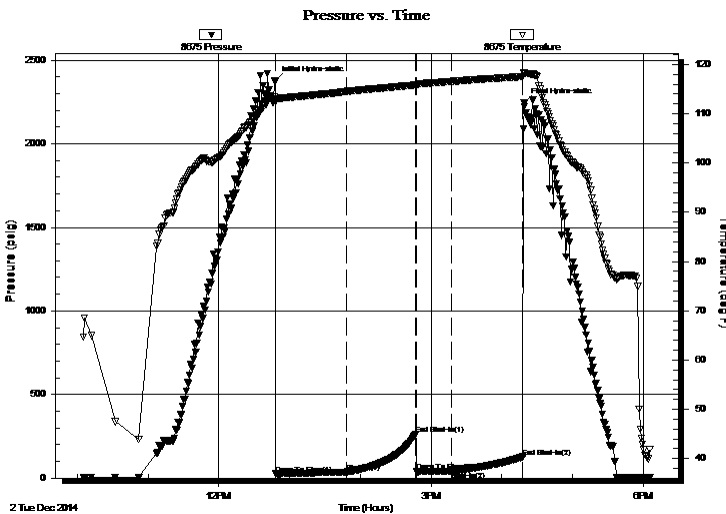
## Serial #: 8675

Inside

Press @ Run Depth: 41.78 psig @ 4615.00 ft (KB) Capacity: 8000.00 psig  
 Start Date: 2014.12.02 End Date: 2014.12.02 Last Calib.: 2014.12.02  
 Start Time: 10:05:15 End Time: 18:06:00 Time On Btm: 2014.12.02 @ 12:47:30  
 Time Off Btm: 2014.12.02 @ 16:18:45

**TEST COMMENT:** Built to 1" in 30 min, stayed there for 60 min  
 Bled off for 3 min, No return blow  
 No blow, Flushed tool 20 min into, Surge blow  
 Bled off for 3 min, No return blow

## PRESSURE SUMMARY



Time (Min.)	Pressure (psig)	Temp (deg F)	Annotation
0	2375.76	113.39	Initial Hydro-static
1	24.66	112.33	Open To Flow (1)
61	35.82	114.51	Shut-In(1)
120	262.02	115.83	End Shut-In(1)
120	39.71	115.80	Open To Flow (2)
150	41.78	116.56	Shut-In(2)
211	126.40	117.56	End Shut-In(2)
212	2242.95	118.39	Final Hydro-static

## Recovery

Length (ft)	Description	Volume (bbl)
45.00	ocm 10%O 90%M	0.22

\* Recovery from multiple tests

## Gas Rates

Choke (inches)	Pressure (psig)	Gas Rate (Mcf/d)



**TRILOBITE TESTING, INC.**

# DRILL STEM TEST REPORT

Russell Oil, Inc.  
 PO Box 8050  
 Edmond OK, 73083  
 ATTN: Kitt Noah

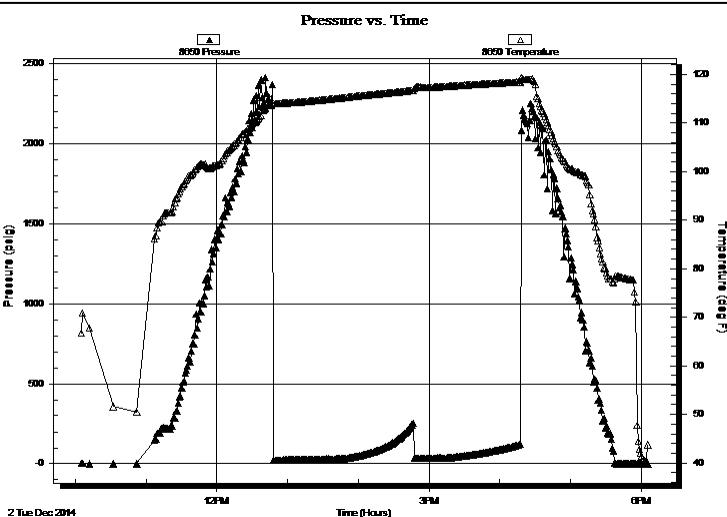
**6-16s-34w Scott Co, KS**  
**Edwards Trust G 6-1**  
 Job Ticket: 58507 **DST#: 2**  
 Test Start: 2014.12.02 @ 10:05:00

**GENERAL INFORMATION:**

Formation: **Johnson Zone**  
 Deviated: No Whipstock: ft (KB)  
 Time Tool Opened: 12:47:45  
 Time Test Ended: 18:06:00  
**Interval: 4592.00 ft (KB) To 4618.00 ft (KB) (TVD)**  
 Total Depth: 4618.00 ft (KB) (TVD)  
 Hole Diameter: 7.88 inches  
 Hole Condition: Poor  
 Test Type: Conventional Bottom Hole (Reset)  
 Tester: Jace McKinney  
 Unit No: 75  
 Reference Elevations: 3084.00 ft (KB)  
 3073.00 ft (CF)  
 KB to GR/CF: 11.00 ft

**Serial #: 8650 Outside**  
 Press @ RunDepth: psig @ 4615.00 ft (KB)  
 Start Date: 2014.12.02 End Date: 2014.12.02  
 Start Time: 10:05:15 End Time: 18:05:45  
 Capacity: 8000.00 psig  
 Last Calib.: 2014.12.02  
 Time On Btm:  
 Time Off Btm:

**TEST COMMENT:** Built to 1" in 30 min, stayed there for 60 min  
 Bled off for 3 min, No return blow  
 No blow, Flushed tool 20 min into, Surge blow  
 Bled off for 3 min, No return blow



**PRESSURE SUMMARY**

Time (Min.)	Pressure (psig)	Temp (deg F)	Annotation

**Recovery**

Length (ft)	Description	Volume (bbl)
45.00	ocm 10%O 90%M	0.22

**Gas Rates**

Choke (inches)	Pressure (psig)	Gas Rate (Mcf/d)

\* Recovery from multiple tests



**TRILOBITE  
TESTING, INC.**

# DRILL STEM TEST REPORT

**FLUID SUMMARY**

Russell Oil, Inc.

**6-16s-34w Scott Co, KS**

PO Box 8050  
Edmond OK, 73083

**Edwards Trust G 6-1**

Job Ticket: 58507

**DST#: 2**

ATTN: Kitt Noah

Test Start: 2014.12.02 @ 10:05:00

## Mud and Cushion Information

Mud Type: Gel Chem

Cushion Type:

Oil API:

deg API

Mud Weight: 9.00 lb/gal

Cushion Length:

ft

Water Salinity:

ppm

Viscosity: 49.00 sec/qt

Cushion Volume:

bbbl

Water Loss: 9.59 in<sup>3</sup>

Gas Cushion Type:

Resistivity: ohm.m

Gas Cushion Pressure:

psig

Salinity: 6700.00 ppm

Filter Cake: 2.00 inches

## Recovery Information

Recovery Table

Length ft	Description	Volume bbl
45.00	ocm 10%O 90%M	0.221

Total Length: 45.00 ft      Total Volume: 0.221 bbl

Num Fluid Samples: 0

Num Gas Bombs: 0

Serial #:

Laboratory Name:

Laboratory Location:

Recovery Comments:

