



TRILOBITE TESTING, INC

DRILL STEM TEST REPORT

Herman L. Loeb LLC
 P.O. Box 838
 Lawrenceville IL 62439
 ATTN: Keith Revis

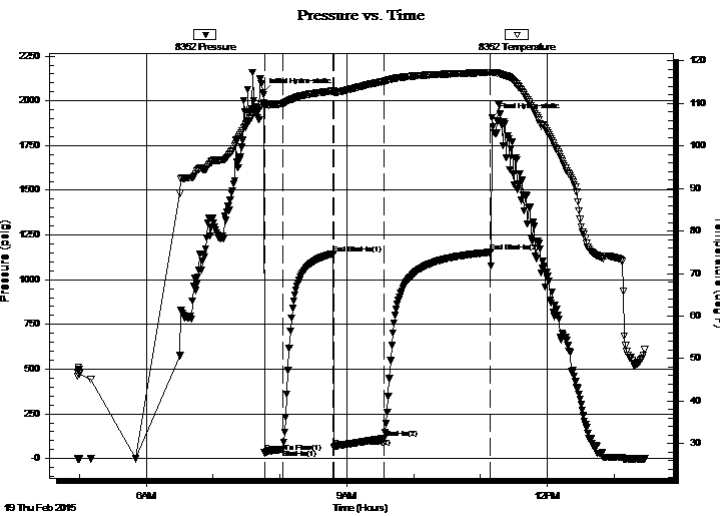
27-26s-15w Pratt Ks.
Kodiak A#1-27
 Job Ticket: 59743 **DST#: 2**
 Test Start: 2015.02.19 @ 04:58:21

GENERAL INFORMATION:

Formation: **Lans. B**
 Deviated: No Whipstock: ft (KB)
 Time Tool Opened: 07:46:06
 Time Test Ended: 13:27:21
 Interval: **3917.00 ft (KB) To 3937.00 ft (KB) (TVD)**
 Total Depth: 3937.00 ft (KB) (TVD)
 Hole Diameter: 7.88 inches Hole Condition: Fair
 Test Type: Conventional Bottom Hole (Reset)
 Tester: Gary Pevoteaux
 Unit No: 80
 Reference Elevations: 2053.00 ft (KB)
 2044.00 ft (CF)
 KB to GR/CF: 9.00 ft

Serial #: 8352 Outside
 Press@RunDepth: 112.44 psig @ 3918.00 ft (KB) Capacity: 8000.00 psig
 Start Date: 2015.02.19 End Date: 2015.02.19 Last Calib.: 1899.12.30
 Start Time: 04:58:26 End Time: 13:27:20 Time On Btm: 2015.02.19 @ 07:44:21
 Time Off Btm: 2015.02.19 @ 11:10:36

TEST COMMENT: IF: Strong blow . B.O.B. in 2 1/2 mins.
 IS: No blow .
 FF: Fair to strong blow . B.O.B. in 3 mins.
 FS: Weak blow . 1/2 - 3/4".



PRESSURE SUMMARY

Time (Min.)	Pressure (psig)	Temp (deg F)	Annotation
0	2048.25	109.93	Initial Hydro-static
2	33.25	109.74	Open To Flow (1)
18	52.94	110.01	Shut-In(1)
64	1145.44	112.90	End Shut-In(1)
64	60.29	112.59	Open To Flow (2)
110	112.44	115.20	Shut-In(2)
205	1153.69	117.30	End Shut-In(2)
207	1907.64	117.29	Final Hydro-static

Recovery

Length (ft)	Description	Volume (bbl)
62.00	SW /trace of oil Rw .14ohms@50deg	0.30
62.00	MW / w o specs 28%m 72%w	0.30
62.00	SOCM 1%o 99%m	0.30
0.00	125 ft.of GIP	0.00

* Recovery from multiple tests

Gas Rates

Choke (inches)	Pressure (psig)	Gas Rate (Mcf/d)



**TRILOBITE
TESTING, INC**

DRILL STEM TEST REPORT

FLUID SUMMARY

Herman L. Loeb LLC
P.O. Box 838
Lawrenceville IL 62439
ATTN: Keith Revis

27-26s-15w Pratt Ks.
Kodiak A#1-27
Job Ticket: 59743 **DST#: 2**
Test Start: 2015.02.19 @ 04:58:21

Mud and Cushion Information

Mud Type: Gel Chem	Cushion Type:	Oil API:	deg API
Mud Weight: 10.00 lb/gal	Cushion Length: ft	Water Salinity:	82000 ppm
Viscosity: 63.00 sec/qt	Cushion Volume: bbl		
Water Loss: 9.99 in ³	Gas Cushion Type:		
Resistivity: 0.00 ohm.m	Gas Cushion Pressure: psig		
Salinity: 5000.00 ppm			
Filter Cake: 0.20 inches			

Recovery Information

Recovery Table

Length ft	Description	Volume bbl
62.00	SW /trace of oil Rw .14ohms@50deg	0.305
62.00	MW / w o specs 28%m 72%w	0.305
62.00	SOCM 1%o 99%m	0.305
0.00	125 ft.of GIP	0.000

Total Length: 186.00 ft Total Volume: 0.915 bbl
Num Fluid Samples: 0 Num Gas Bombs: 0 Serial #: none
Laboratory Name: Laboratory Location:
Recovery Comments:

