



**TRILOBITE  
TESTING, INC**

# DRILL STEM TEST REPORT

Vicent Oil Corporation  
155 N Market Suite 700  
Wichita, Ks. 67202  
ATTN: Jim Hall

**8-29s-22w Ford Co., Ks.**

**Feikert Farms 4-8**

Job Ticket: 57795

**DST#: 3**

Test Start: 2014.11.08 @ 14:56:29

## GENERAL INFORMATION:

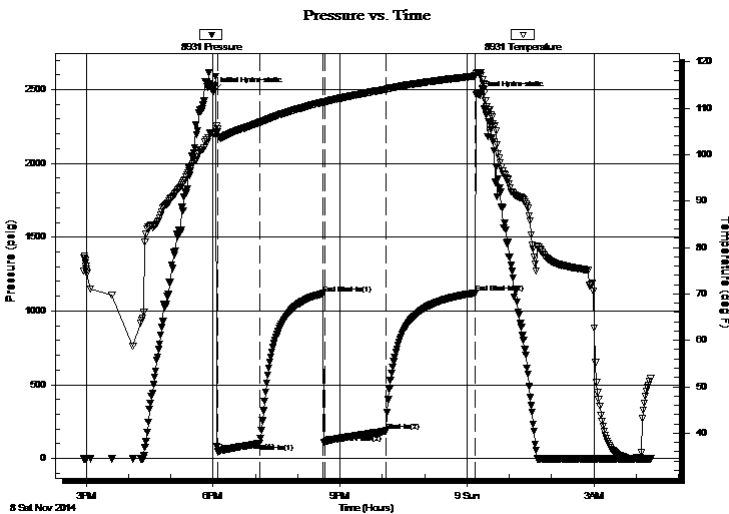
Formation: **Mississippi**  
 Deviated: No Whipstock: 0.00 ft (KB)  
 Time Tool Opened: 18:06:44  
 Time Test Ended: 04:20:59  
 Interval: **5260.00 ft (KB) To 5316.00 ft (KB) (TVD)**  
 Total Depth: 5316.00 ft (KB) (TVD)  
 Hole Diameter: 7.88 inches Hole Condition: Fair  
 Test Type: Conventional Bottom Hole (Reset)  
 Tester: Matt Smith  
 Unit No: 53  
 Reference Elevations: 2510.00 ft (KB)  
 2500.00 ft (CF)  
 KB to GR/CF: 10.00 ft

## Serial #: 8931

Inside

Press@RunDepth: 185.59 psig @ 5261.00 ft (KB) Capacity: 8000.00 psig  
 Start Date: 2014.11.08 End Date: 2014.11.09 Last Calib.: 2014.11.09  
 Start Time: 14:56:34 End Time: 04:20:59 Time On Btm: 2014.11.08 @ 18:00:59  
 Time Off Btm: 2014.11.09 @ 00:12:59

TEST COMMENT: IF: Strong blow . B.O.B. in 50 secs.  
 IS: Fair blow . Surf., - 5 1/2". Bleed off for 10 mins.  
 FF: Strong blow . B.O.B. immediate. G.T.S., in 57 mins. Gauged gas, see gas report.  
 FS: Strong blow . B.O.B. in 55 mins. Bleed off for 15 mins.



## PRESSURE SUMMARY

Time (Min.)	Pressure (psig)	Temp (deg F)	Annotation
0	2485.41	104.57	Initial Hydro-static
6	46.16	105.50	Open To Flow (1)
65	101.47	106.89	Shut-In(1)
155	1117.53	111.29	End Shut-In(1)
157	105.31	111.21	Open To Flow (2)
245	185.59	114.05	Shut-In(2)
370	1121.12	116.90	End Shut-In(2)
372	2462.61	117.47	Final Hydro-static

## Recovery

Length (ft)	Description	Volume (bbl)
62.00	GOMCW 1%g 1%o 2%m 96%w	0.87
62.00	MCW 2%m 98%w	0.87
62.00	MCVOG 10%m 20%w 32%o 38%g	0.87
62.00	WGMCO 15%w 22%g 25%m 38%o	0.87
62.00	WMCOG 14%w 15%m 35%o 36%g	0.87
52.00	WGOCM 1%w 10%g 19%o 70%m	0.73

\* Recovery from multiple tests

## Gas Rates

	Choke (inches)	Pressure (psig)	Gas Rate (Mcf/d)
First Gas Rate	0.13	3.00	6.51
Last Gas Rate	0.13	5.00	7.26
Max. Gas Rate	0.13	5.00	7.26



**TRILOBITE  
TESTING, INC**

# DRILL STEM TEST REPORT

**FLUID SUMMARY**

Vicent Oil Corporation

**8-29s-22w Ford Co., Ks.**

155 N Market Suite 700  
Wichita, Ks. 67202

**Feikert Farms 4-8**

Job Ticket: 57795

**DST#: 3**

ATTN: Jim Hall

Test Start: 2014.11.08 @ 14:56:29

## Mud and Cushion Information

Mud Type: Gel Chem  
Mud Weight: 9.00 lb/gal  
Viscosity: 58.00 sec/qt  
Water Loss: 9.59 in<sup>3</sup>  
Resistivity: ohm.m  
Salinity: 8500.00 ppm  
Filter Cake: 0.20 inches

Cushion Type:  
Cushion Length: ft  
Cushion Volume: bbl  
Gas Cushion Type:  
Gas Cushion Pressure: psig

Oil API: deg API  
Water Salinity: 86000 ppm

## Recovery Information

Recovery Table

Length ft	Description	Volume bbl
62.00	GOMCW 1%g 1%o 2%m 96%w	0.870
62.00	MCW 2%m 98%w	0.870
62.00	MCWOG 10%m 20%w 32%o 38%g	0.870
62.00	WGMCO 15%w 22%g 25%m 38%o	0.870
62.00	WMCOG 14%w 15%m 35%o 36%g	0.870
52.00	WGOCM 1%w 10%g 19%o 70%m	0.729
0.00	G.I.P. G.T.S. 100%g	0.000
0.00	RW is .16 @ 40 = 86000 chorides	0.000

Total Length: 362.00 ft      Total Volume: 5.079 bbl

Num Fluid Samples: 0

Num Gas Bombs: 1

Serial #: MAS Pratt

Laboratory Name: Caraway

Laboratory Location: Liberal, KS

Recovery Comments: RW is .16 @ 40 degrees = 86000 chorides. Too frothy of gassy oil to get gravity.



**TRILOBITE  
TESTING, INC.**

## DRILL STEM TEST REPORT

**GAS RATES**

Vicent Oil Corporation

**8-29s-22w Ford Co., Ks.**

155 N Market Suite 700  
Wichita, Ks. 67202

**Feikert Farms 4-8**

Job Ticket: 57795

**DST#: 3**

ATTN: Jim Hall

Test Start: 2014.11.08 @ 14:56:29

### Gas Rates Information

Temperature: 59 (deg F)  
Relative Density: 0.65  
Z Factor: 0.8

Gas Rates Table

Flow Period	Elapsed Time	Choke (inches)	Pressure (psig)	Gas Rate (Mcf/d)
2	60	0.13	3.00	6.51
2	70	0.13	4.00	6.89
2	80	0.13	4.50	7.07
2	90	0.13	5.00	7.26

Serial #: 8931

Inside

Vicent Oil Corporation

Felkert Farms 4-8

DST Test Number: 3

