



TRILOBITE TESTING, INC.

DRILL STEM TEST REPORT

Shelby Resources

15-18s-14w Barton

2717 Canal Blvd
Hays KS 67601

W-S #2-15

Job Ticket: 62904

DST#: 1

ATTN: Jermey Schwartz

Test Start: 2015.01.31 @ 08:25:00

GENERAL INFORMATION:

Formation: **Lansing H zone**

Deviated: No Whipstock: ft (KB)

Time Tool Opened: 10:14:30

Time Test Ended: 15:37:00

Test Type: Conventional Bottom Hole (Initial)

Tester: Jared Scheck

Unit No: 55-Great Bend - 25 R

Interval: 3312.00 ft (KB) To 3340.00 ft (KB) (TVD)

Reference Elevations: 1934.00 ft (KB)

Total Depth: 3340.00 ft (KB) (TVD)

1925.00 ft (CF)

Hole Diameter: 7.88 inches Hole Condition: Fair

KB to GR/CF: 9.00 ft

Serial #: 8400

Press @ Run Depth: 151.14 psig @ ft (KB)

Capacity: 5000.00 psig

Start Date: 2015.01.31

End Date: 2015.01.31

Last Calib.: 2015.01.31

Start Time: 08:26:00

End Time: 15:37:00

Time On Btm: 2015.01.31 @ 10:13:30

Time Off Btm: 2015.01.31 @ 13:26:30

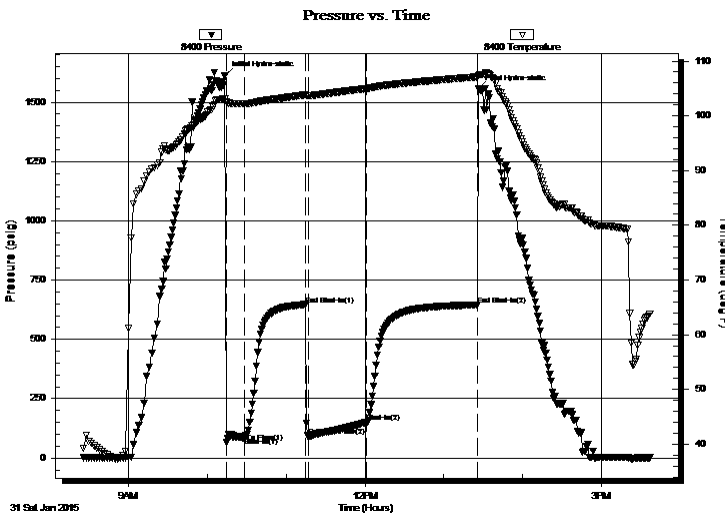
TEST COMMENT: IFP-15 Minutes-Strong blow built bottom of bucket in 2 1/2 minutes

ISIP-45 Minutes-Very Weak blow back

FFP-45 Minutes-Strong blow built bottom of bucket in 2 minutes gas to surface 35 minutes into open see gas report

FSIP-90 Minutes-Bottom of bucket blow

PRESSURE SUMMARY



Time (Min.)	Pressure (psig)	Temp (deg F)	Annotation
0	1612.85	103.13	Initial Hydro-static
1	64.69	102.55	Open To Flow (1)
15	88.31	102.19	Shut-In(1)
61	646.55	103.83	End Shut-In(1)
64	93.80	103.67	Open To Flow (2)
108	151.14	104.98	Shut-In(2)
192	645.51	107.13	End Shut-In(2)
193	1554.76	107.41	Final Hydro-static

Recovery

Length (ft)	Description	Volume (bbl)
60.00	GOM 40%gas 30%oil 30%mud	0.30
60.00	GOM 50%gas 20%oil 30%mud	0.30
300.00	GO 20%gas 80%oil	3.39
0.00	gas in pipe	0.00

Gas Rates

	Choke (inches)	Pressure (psig)	Gas Rate (Mcf/d)
First Gas Rate	0.13		



**TRILOBITE
TESTING, INC.**

DRILL STEM TEST REPORT

Shelby Resources

15-18s-14w Barton

2717 Canal Blvd
Hays KS 67601

W-S #2-15

Job Ticket: 62904

DST#: 1

ATTN: Jermey Schwartz

Test Start: 2015.01.31 @ 08:25:00

GENERAL INFORMATION:

Formation: **Lansing H zone**

Deviated: No Whipstock: ft (KB)

Time Tool Opened: 10:14:30

Time Test Ended: 15:37:00

Test Type: Conventional Bottom Hole (Initial)

Tester: Jared Scheck

Unit No: 55-Great Bend - 25 R

Interval: 3312.00 ft (KB) To 3340.00 ft (KB) (TVD)

Reference Elevations: 1934.00 ft (KB)

Total Depth: 3340.00 ft (KB) (TVD)

1925.00 ft (CF)

Hole Diameter: 7.88 inches Hole Condition: Fair

KB to GR/CF: 9.00 ft

Serial #: 6999

Press @ Run Depth: 646.70 psig @ ft (KB)

Capacity: 5000.00 psig

Start Date: 2015.01.31

End Date: 2015.01.31

Last Calib.: 2015.01.31

Start Time: 08:26:00

End Time: 15:36:30

Time On Btm: 2015.01.31 @ 10:13:30

Time Off Btm: 2015.01.31 @ 13:26:30

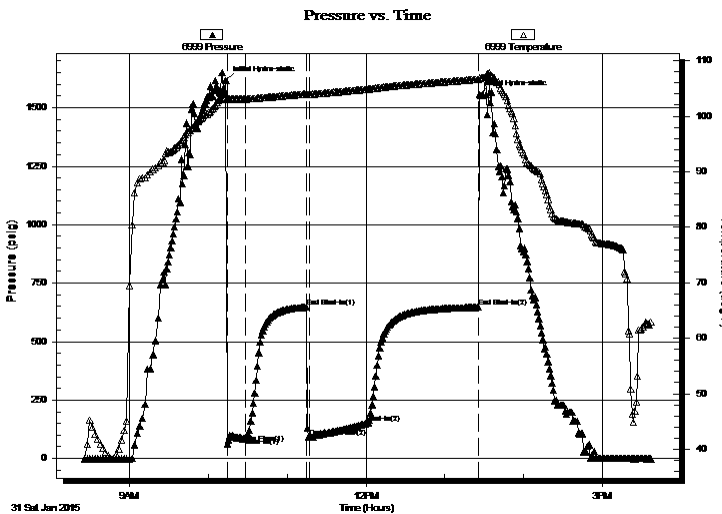
TEST COMMENT: IFP-15 Minutes-Strong blow built bottom of bucket in 2 1/2 minutes

ISIP-45 Minutes-Very Weak blow back

FFP-45 Minutes-Strong blow built bottom of bucket in 2 minutes gas to surface 35 minutes into open see gas report

FSIP-90 Minutes-Bottom of bucket blow

PRESSURE SUMMARY



Time (Min.)	Pressure (psig)	Temp (deg F)	Annotation
0	1615.04	103.37	Initial Hydro-static
1	63.25	103.06	Open To Flow (1)
15	89.22	103.09	Shut-In(1)
61	647.37	104.00	End Shut-In(1)
64	92.89	103.93	Open To Flow (2)
107	150.76	104.86	Shut-In(2)
192	646.70	106.63	End Shut-In(2)
193	1555.62	106.87	Final Hydro-static

Recovery

Length (ft)	Description	Volume (bbl)
60.00	GOM 40% gas 30% oil 30% mud	0.30
60.00	GOM 50% gas 20% oil 30% mud	0.30
300.00	GO 20% gas 80% oil	3.39
0.00	gas in pipe	0.00

Gas Rates

	Choke (inches)	Pressure (psig)	Gas Rate (Mcf/d)
First Gas Rate	0.13		



**TRILOBITE
TESTING, INC.**

DRILL STEM TEST REPORT

FLUID SUMMARY

Shelby Resources

15-18s-14w Barton

2717 Canal Blvd
Hays KS 67601

W-S #2-15

Job Ticket: 62904

DST#: 1

ATTN: Jermey Schwartz

Test Start: 2015.01.31 @ 08:25:00

Mud and Cushion Information

Mud Type: Gel Chem

Cushion Type:

Oil API:

deg API

Mud Weight: 9.00 lb/gal

Cushion Length:

ft

Water Salinity:

ppm

Viscosity: 61.00 sec/qt

Cushion Volume:

bbbl

Water Loss: 7.20 in³

Gas Cushion Type:

Resistivity: ohm.m

Gas Cushion Pressure:

psig

Salinity: 5100.00 ppm

Filter Cake: 1.00 inches

Recovery Information

Recovery Table

Length ft	Description	Volume bbbl
60.00	GOM 40%gas 30%oil 30%mud	0.295
60.00	GOM 50%gas 20%oil 30%mud	0.295
300.00	GO 20%gas 80%oil	3.388
0.00	gas in pipe	0.000

Total Length: 420.00 ft Total Volume: 3.978 bbl

Num Fluid Samples: 0

Num Gas Bombs: 0

Serial #:

Laboratory Name:

Laboratory Location:

Recovery Comments: Gravity oil 42

