

## DRILL STEM TEST REPORT

Prepared For: **Raydon Exploration Inc.**

1601 nw Expressway  
Ste 1300  
Oklahoma City, OK 73118

ATTN: Edwin H Grieves

### **Toro #1-25**

#### **25-28s-34w Haskell,KS**

Start Date: 2014.11.21 @ 07:29:29

End Date: 2014.11.21 @ 17:56:58

Job Ticket #: 58604                      DST #: 1

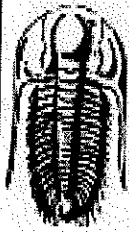
Trilobite Testing, Inc

1515 Commerce Parkway Hays, KS 67601

ph: 785-625-4778 fax: 785-625-5620

Printed: 2014.12.02 @ 09:48:25

Raydon Exploration Inc. 25-28s-34w Haskell,KS Toro #1-25 DST # 1 LKC B 2014.11.21



**TRILOBITE TESTING, INC**

# DRILL STEM TEST REPORT

Raydon Exploration Inc.  
1601 nw Expressway  
Ste 1300  
Oklahoma City, OK 73118  
ATTN: Edw in H Grieves

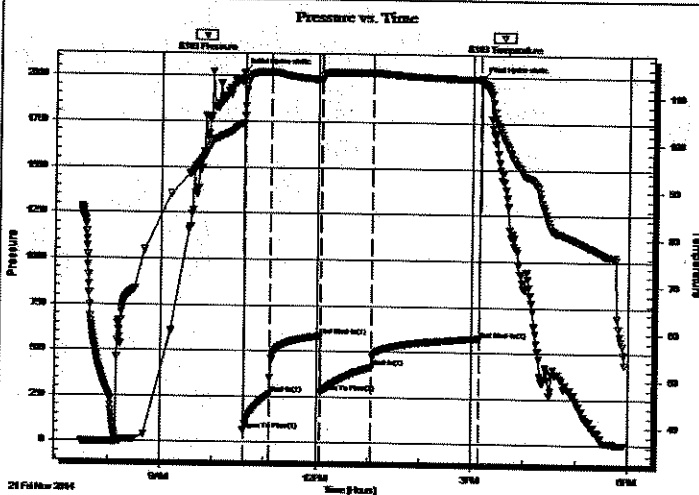
**25-28s-34w Haskell, KS**  
**Toro #1-25**  
Job Ticket: 58604 **DST#: 1**  
Test Start: 2014.11.21 @ 07:29:29

## GENERAL INFORMATION:

Formation: **LKC B**  
Deviated: No. Whipstock: ft (KB)  
Time Tool Opened: 10:35:58  
Time Test Ended: 17:56:58  
Interval: **4172.00 ft (KB) To 4185.00 ft (KB) (TVD)**  
Total Depth: 4185.00 ft (KB) (TVD)  
Hole Diameter: 7.88 inches Hole Condition: Poor  
Test Type: Conventional Bottom Hole (Initial)  
Tester: James Geier  
Unit No: 58  
Reference Elevations: 2982.00 ft (KB)  
2974.00 ft (CF)  
KB to GR/CF: 8.00 ft

**Serial #: 8319** Outside  
Press@RunDepth: 414.81 psig @ 4173.00 ft (KB) Capacity: 8000.00 psig  
Start Date: 2014.11.21 End Date: 2014.11.21 Last Calib.: 2014.11.21  
Start Time: 07:29:29 End Time: 17:56:58 Time On Btm: 2014.11.21 @ 10:34:28  
Time Off Btm: 2014.11.21 @ 15:09:58

**TEST COMMENT:** IF: 30 BOB in 5 min.  
IS: 60 No return / Bled off 5 min.  
FF: 60 BOB in 11 min.  
FS: 120 No return / Bled off 5 min.



## PRESSURE SUMMARY

Time (Min.)	Pressure (psig)	Temp (deg F)	Annotation
0	2017.23	104.12	Initial Hydro-static
2	65.74	105.83	Open To Flow (1)
32	264.82	115.22	Shut-in(1)
90	583.33	113.51	End Shut-in(1)
90	273.78	113.40	Open To Flow (2)
150	414.81	115.09	Shut-in(2)
274	576.27	113.88	End Shut-in(2)
276	1988.13	113.72	Final Hydro-static

## Recovery

Length (ft)	Description	Volume (bbl)
28.00	o 100% o	0.14
797.00	g c o w 5% g 3% o 92% w	9.26

## Gas Rates

	Choke (inches)	Pressure (psig)	Gas Rate (Mcf/d)



**TRILOBITE  
TESTING, INC.**

# DRILL STEM TEST REPORT

Raydon Exploration Inc.  
1601 nw Expressway  
Ste 1300  
Oklahoma City, OK 73118  
ATTN: Edw in H Grieves

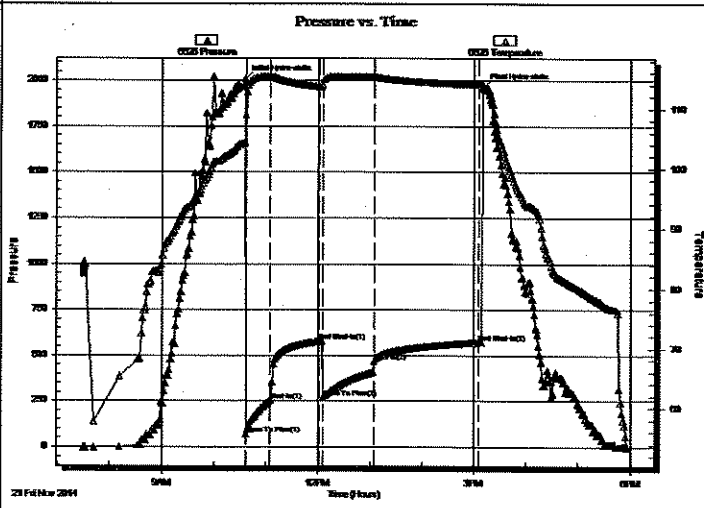
**25-28s-34w Haskell,KS**  
**Toro #1-25**  
Job Ticket: 58604      **DST#: 1**  
Test Start: 2014.11.21 @ 07:29:29

## GENERAL INFORMATION:

Formation: **LKC B**  
Deviated: No Whipstock: ft (KB)  
Time Tool Opened: 10:35:58  
Time Test Ended: 17:56:58  
Interval: **4172.00 ft (KB) To 4185.00 ft (KB) (TVD)**  
Total Depth: 4185.00 ft (KB) (TVD)  
Hole Diameter: 7.88 inches Hole Condition: Poor  
Test Type: Conventional Bottom Hole (Initial)  
Tester: James Geier  
Unit No: 58  
Reference Elevations: 2982.00 ft (KB)  
2974.00 ft (CF)  
KB to GR/CF: 8.00 ft

**Serial #: 6625**      **Outside**  
Press@RunDepth: 572.33 psig @ 4173.00 ft (KB)      Capacity: 8000.00 psig  
Start Date: 2014.11.21      End Date: 2014.11.21      Last Calib.: 2014.11.21  
Start Time: 07:29:50      End Time: 17:57:19      Time On Btm: 2014.11.21 @ 10:35:19  
Time Off Btm: 2014.11.21 @ 15:11:19

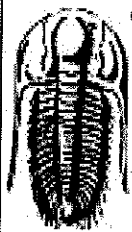
**TEST COMMENT:** IF: 30 BOB in 5 min.  
IS: 60 No return / Bled off 5 min.  
FF: 60 BOB in 11 min.  
FS: 120 No return / Bled off 5 min.



PRESSURE SUMMARY			
Time (Min.)	Pressure (psig)	Temp (deg F)	Annotation
0	2008.46	104.40	Initial Hydro-static
2	67.33	109.00	Open To Flow (1)
29	251.73	115.38	Shut-In(1)
86	577.48	113.70	End Shut-In(1)
90	270.30	113.93	Open To Flow (2)
150	468.43	115.35	Shut-In(2)
270	572.33	114.06	End Shut-In(2)
276	1964.61	113.37	Final Hydro-static

Recovery		
Length (ft)	Description	Volume (bbl)
28.00	o 100% o	0.14
797.00	g c o w 5% g 3% o 92% w	9.26

Gas Rates			
	Choke (inches)	Pressure (psig)	Gas Rate (Mcf/d)



**TRILOBITE  
TESTING, INC.**

## DRILL STEM TEST REPORT

**TOOL DIAGRAM**

Raydon Exploration Inc.

**25-28s-34w Haskell, KS**

1601 nw Expressway  
Ste 1300  
Oklahoma City, OK 73118  
ATTN: Edw in H Grieves

**Toro #1-25**

Job Ticket: 58604

**DST#: 1**

Test Start: 2014.11.21 @ 07:29:29

### Tool Information

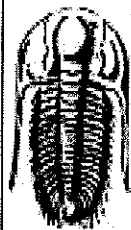
Drill Pipe:	Length: 3924.00 ft	Diameter: 3.80 inches	Volume: 55.04 bbl	Tool Weight: 1500.00 lb
Heavy Wt. Pipe:	Length: ft	Diameter: inches	Volume: - bbl	Weight set on Packer: 25000.00 lb
Drill Collar:	Length: 239.00 ft	Diameter: 2.25 inches	Volume: 1.18 bbl	Weight to Pull Loose: 90000.00 lb
			<u>Total Volume: - bbl</u>	Tool Chased 0.00 ft
Drill Pipe Above KB:	19.00 ft			String Weight: Initial 65000.00 lb
Depth to Top Packer:	4172.00 ft			Final 70000.00 lb
Depth to Bottom Packer:	ft			
Interval between Packers:	13.00 ft			
Tool Length:	41.00 ft			
Number of Packers:	1	Diameter: 6.75 inches		

Tool Comments:

### Tool Description

Tool Description	Length (ft)	Serial No.	Position	Depth (ft)	Accum. Lengths
Change Over Sub	1.00			4145.00	
Shut In Tool	5.00		Fluid	4150.00	
Hydraulic tool	5.00			4155.00	
Jars	5.00			4160.00	
Safety Joint	3.00			4163.00	
Packer	5.00			4168.00	28.00 Bottom Of Top Packer
Packer	4.00			4172.00	
Stubb	1.00			4173.00	
Recorder	0.00	8319	Outside	4173.00	
Recorder	0.00	6625	Outside	4173.00	
Perforations	9.00			4182.00	
Bullnose	3.00			4185.00	13.00 Bottom Packers & Anchor

**Total Tool Length: 41.00**



**TRILOBITE  
TESTING, INC.**

# DRILL STEM TEST REPORT

**FLUID SUMMARY**

Raydon Exploration Inc.

**25-28s-34w Haskell, KS**

1601 nw Expressway  
Ste 1300  
Oklahoma City, OK 73118  
ATTN: Edw in H Grieves

**Toro #1-25**

Job Ticket: 58604

**DST#: 1**

Test Start: 2014.11.21 @ 07:29:29

## Mud and Cushion Information

Mud Type: Gel Chem

Cushion Type:

Oil API:

0 deg API

Mud Weight: 9.00 lb/gal

Cushion Length:

ft

Water Salinity:

6500 ppm

Viscosity: 42.00 sec/qt

Cushion Volume:

bbbl

Water Loss: 6.38 in<sup>3</sup>

Gas Cushion Type:

Resistivity: ohm.m

Gas Cushion Pressure:

psig

Salinity: 2800.00 ppm

Filter Cake: 1.00 inches

## Recovery Information

Recovery Table

Length ft	Description	Volume bbl
28.00	o 100% o	0.138
797.00	g c o w 5% g 3% o 92% w	9.258

Total Length: 825.00 ft      Total Volume: 9.396 bbl

Num Fluid Samples: 0

Num Gas Bombs: 0

Serial #:

Laboratory Name:

Laboratory Location:

Recovery Comments:

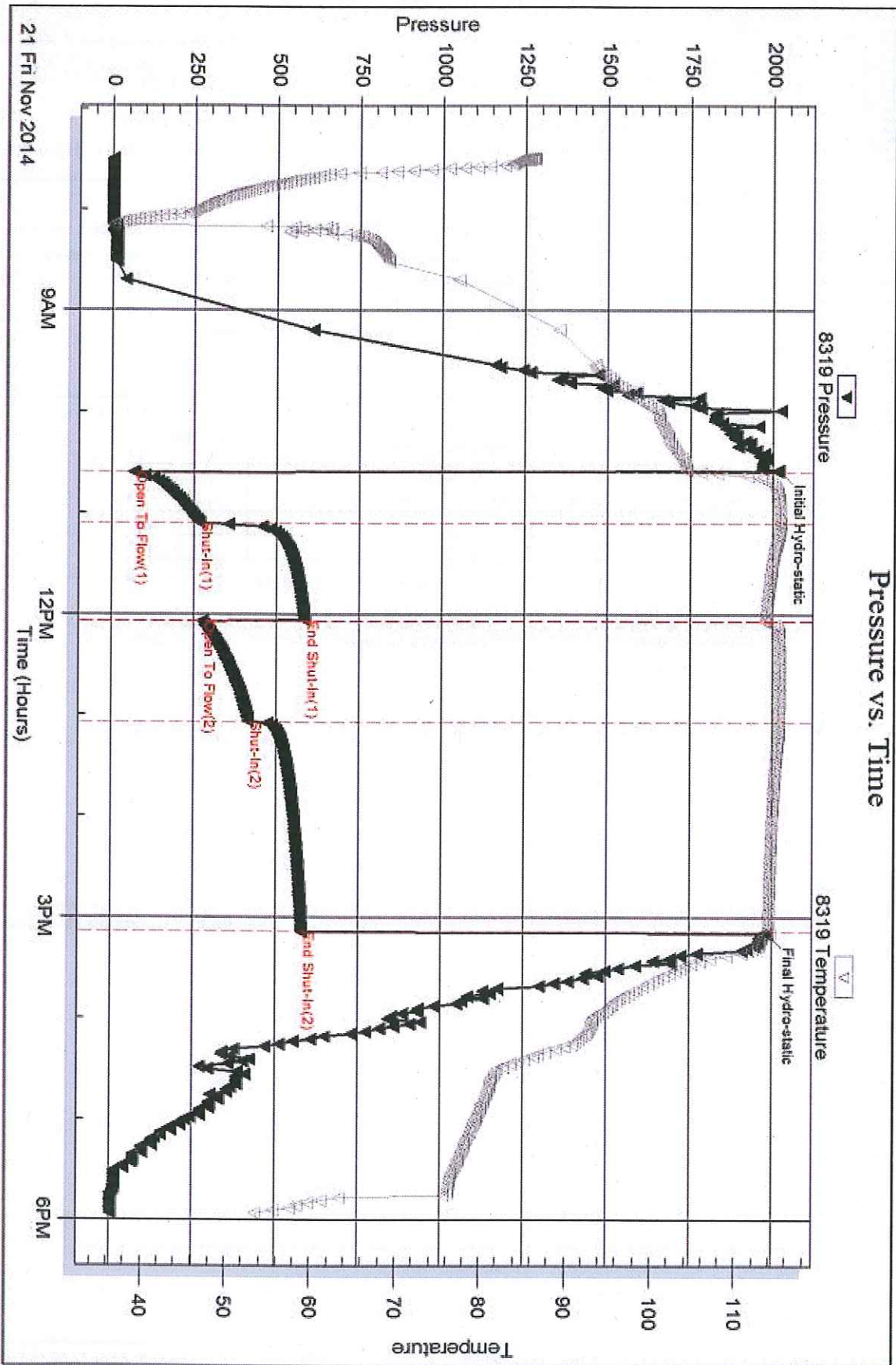
Serial #: 8319

Outside Raydon Exploration Inc.

Toro #1-25

DST Test Number: 1

### Pressure vs. Time

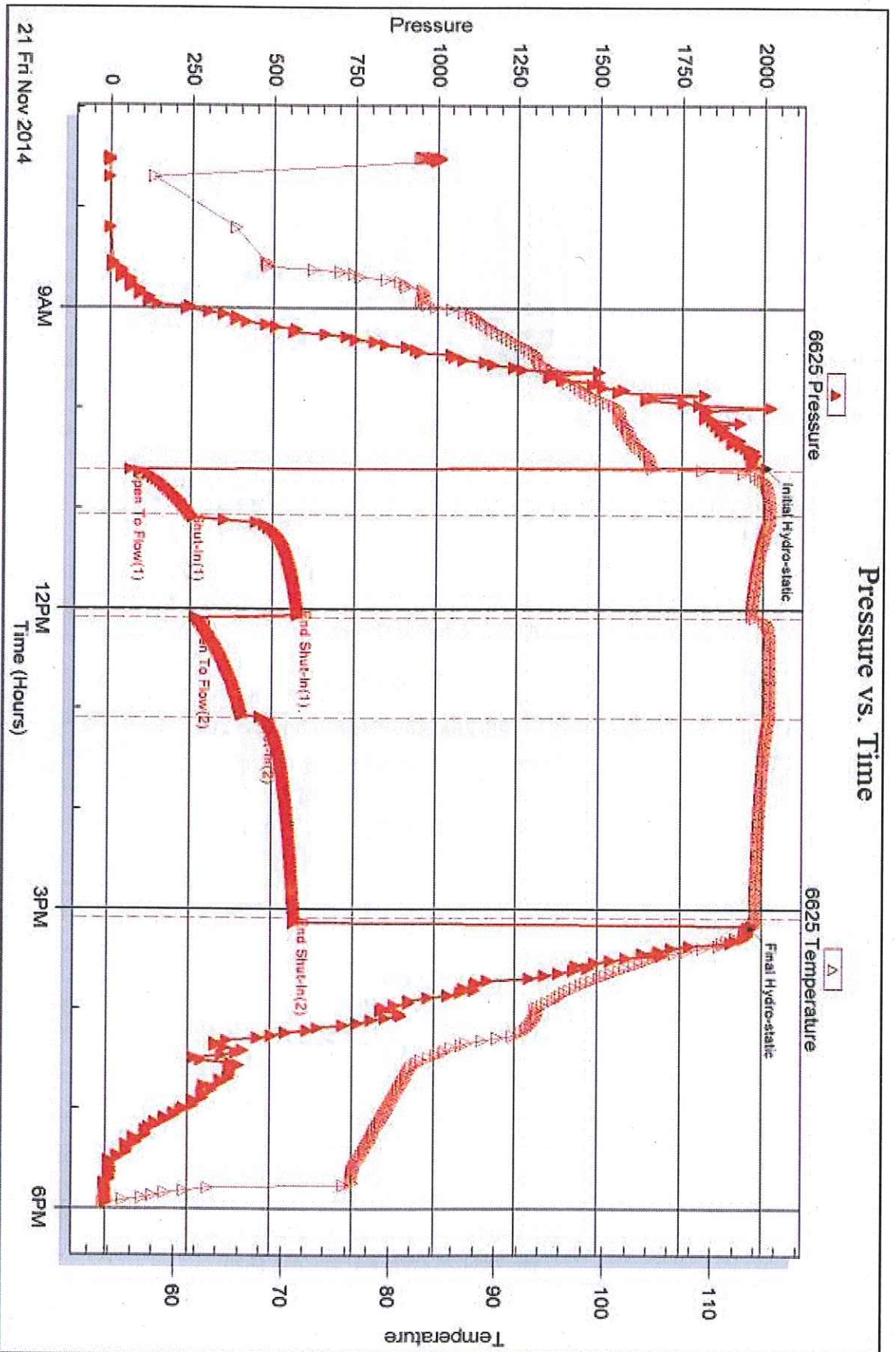


Serial #: 6625

Outside Raydon Exploration Inc.

Toro #1-25

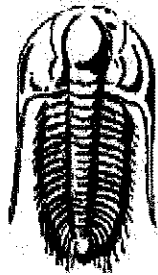
DST Test Number: 1



Triobite Testing, Inc

Ref. No: 59604

Printed: 2014.12.02 @ 09:48:27



**TRILOBITE  
TESTING, INC.**

## DRILL STEM TEST REPORT

Prepared For: **Raydon Exploration Inc.**

1601 nw Expressway  
Ste 1300  
Oklahoma City, OK 73118

ATTN: Edwin H Grieves

**Toro #1-25**

**25-28s-34w Haskell,KS**

Start Date: 2014.11.24 @ 02:00:00

End Date: 2014.11.24 @ 12:30:30

Job Ticket #: 58633                      DST #: 2

Trilobite Testing, Inc

1515 Commerce Parkway Hays, KS 67601

ph: 785-625-4778 fax: 785-625-5620

Printed: 2014.12.02 @ 09:48:03

Raydon Exploration Inc.  
25-28s-34w Haskell,KS  
Toro #1-25  
DST # 2  
Marmaton B  
2014.11.24





**TRILOBITE  
TESTING, INC**

# DRILL STEM TEST REPORT

Raydon Exploration Inc.  
1601 nw Expressway  
Ste 1300  
Oklahoma City, OK 73118  
ATTN: Edw in H Grieves

**25-28s-34w Haskell,KS**

**Toro #1-25**

Job Ticket: 58633

**DST#: 2**

Test Start: 2014.11.24 @ 02:00:00

## GENERAL INFORMATION:

Formation: **Marmaton B**

Deviated: No Whipstock: ft (KB)

Time Tool Opened: 05:26:30

Time Test Ended: 12:30:30

Test Type: Conventional Bottom Hole (Reset)

Tester: Justin Harris

Unit No: 58

Interval: **4670.00 ft (KB) To 4730.00 ft (KB) (TVD)**

Total Depth: 4730.00 ft (KB) (TVD)

Hole Diameter: 7.88 inches Hole Condition: Poor

Reference Elevations: 2982.00 ft (KB)

2974.00 ft (CF)

KB to GR/CF: 8.00 ft

**Serial #: 6625**

**Outside**

Press@RunDepth: 146.40 psig @ 4706.00 ft (KB)

Start Date: 2014.11.24

End Date: 2014.11.24

Start Time: 02:00:01

End Time: 12:30:30

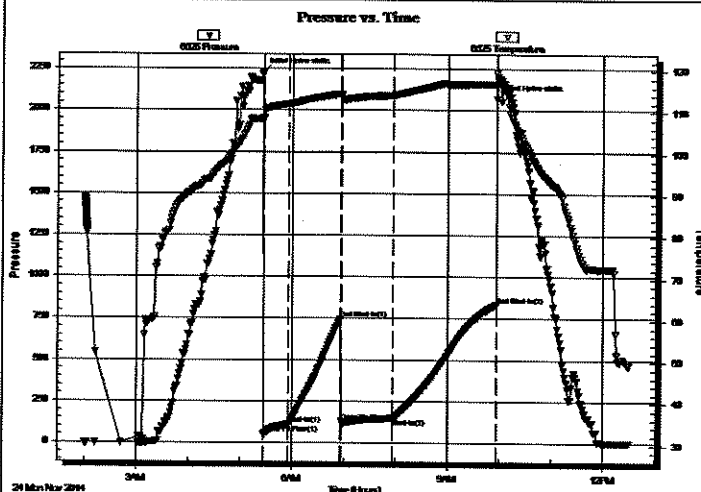
Capacity: 8000.00 psig

Last Calib.: 2014.11.24

Time On Btm: 2014.11.24 @ 05:26:00

Time Off Btm: 2014.11.24 @ 09:57:00

**TEST COMMENT:** 30: B.O.B in 2 1/2 mins  
60: No Return.  
60: B.O.B in 1 min.  
120: No Return.



## PRESSURE SUMMARY

Time (Min.)	Pressure (psig)	Temp (deg F)	Annotation
0	2228.82	108.70	Initial Hydro-static
1	53.29	108.35	Open To Flow (1)
30	109.18	111.95	Shut-in(1)
90	747.35	114.31	End Shut-in(1)
91	126.23	113.92	Open To Flow (2)
151	146.40	114.04	Shut-in(2)
271	834.00	116.87	End Shut-in(2)
271	2069.64	119.63	Final Hydro-static

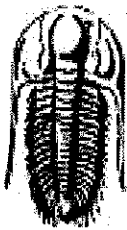
## Recovery

Length (ft)	Description	Volume (bbl)
252.00	gmco 60g 20m 20o	1.36
63.00	gocm 5g 10o 85m	0.88
30.00	gocm 10g 20o 70m	0.42

\* Recovery from multiple tests

## Gas Rates

	Choke (inches)	Pressure (psig)	Gas Rate (Mcf/d)



# TRILOBITE TESTING, INC

## DRILL STEM TEST REPORT

Raydon Exploration Inc.  
1601 nw Expressway  
Ste 1300  
Oklahoma City, OK 73118  
ATTN: Edw in H Grieves

25-28s-34w Haskell,KS  
**Toro #1-25**  
Job Ticket: 58633      **DST#: 2**  
Test Start: 2014.11.24 @ 02:00:00

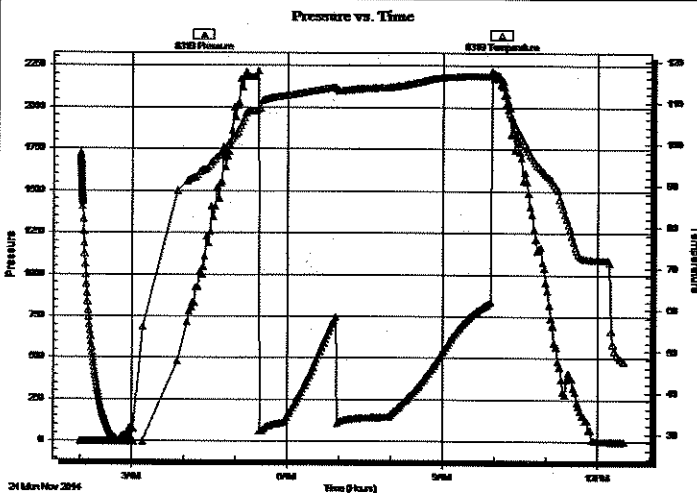
### GENERAL INFORMATION:

Formation: **Marmaton B**  
Deviated: No      Whipstock:      ft (KB)  
Time Tool Opened: 05:26:30  
Time Test Ended: 12:30:30  
Interval: **4670.00 ft (KB) To 4730.00 ft (KB) (TVD)**  
Total Depth: 4730.00 ft (KB) (TVD)  
Hole Diameter: 7.88 inches      Hole Condition: Poor

Test Type: Conventional Bottom Hole (Reset)  
Tester: Justin Harris  
Unit No: 58  
Reference Elevations: 2982.00 ft (KB)  
2974.00 ft (CF)  
KB to GR/CF: 8.00 ft

**Serial #: 8319**      **Inside**  
Press@RunDepth:      psig @      4706.00 ft (KB)      Capacity: 8000.00 psig  
Start Date: 2014.11.24      End Date: 2014.11.24      Last Calib.: 2014.11.24  
Start Time: 02:00:01      End Time: 12:31:00      Time On Btm:  
Time Off Btm:

TEST COMMENT: 30: B.O.B in 2 1/2 mins  
60: No Return.  
60: B.O.B in 1 min.  
120: No Return.



### PRESSURE SUMMARY

Time (Min.)	Pressure (psig)	Temp (deg F)	Annotation
-------------	-----------------	--------------	------------

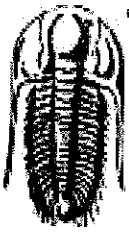
### Recovery

Length (ft)	Description	Volume (bbl)
252.00	gmco 60g 20m 20o	1.36
63.00	gocm 5g 10o 85m	0.88
30.00	gocm 10g 20o 70m	0.42

\* Recovery from multiple tests

### Gas Rates

Choke (inches)	Pressure (psig)	Gas Rate (Mcf/d)
----------------	-----------------	------------------



**TRILOBITE  
TESTING, INC.**

## DRILL STEM TEST REPORT

**TOOL DIAGRAM**

Raydon Exploration Inc.

**25-28s-34w Haskell,KS**

1601 nw Expressway  
Ste 1300  
Oklahoma City, OK 73118  
ATTN: Edw in H Grieves

**Toro #1-25**

Job Ticket: 58633

**DST#: 2**

Test Start: 2014.11.24 @ 02:00:00

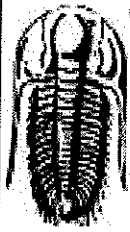
### Tool Information

Drill Pipe:	Length: 4417.00 ft	Diameter: 3.80 inches	Volume: 61.96 bbl	Tool Weight: 2500.00 lb
Heavy Wt. Pipe:	Length: 0.00 ft	Diameter: inches	Volume: 0.00 bbl	Weight set on Packer: 30000.00 lb
Drill Collar:	Length: 239.00 ft	Diameter: 2.25 inches	Volume: 1.18 bbl	Weight to Pull Loose: 85000.00 lb
			<u>Total Volume: 63.14 bbl</u>	Tool Chased 0.00 ft
Drill Pipe Above KB:	13.00 ft			String Weight: Initial 72000.00 lb
Depth to Top Packer:	4670.00 ft			Final 74000.00 lb
Depth to Bottom Packer:	ft			
Interval between Packers:	60.00 ft			
Tool Length:	87.00 ft			
Number of Packers:	2	Diameter: 6.75 inches		

Tool Comments:

### Tool Description

Tool Description	Length (ft)	Serial No.	Position	Depth (ft)	Accum. Lengths
Change Over Sub	1.00			4644.00	
Shut In Tool	5.00			4649.00	
Hydraulic tool	5.00			4654.00	
Jars	5.00			4659.00	
Safety Joint	2.00			4661.00	
Packer	5.00			4666.00	27.00 Bottom Of Top Packer
Packer	4.00			4670.00	
Stubb	1.00			4671.00	
Perforations	2.00			4673.00	
Change Over Sub	1.00			4674.00	
Drill Pipe	31.00			4705.00	
Change Over Sub	1.00			4706.00	
Recorder	0.00	6625	Outside	4706.00	
Recorder	0.00	8319	Inside	4706.00	
Perforations	20.00			4726.00	
Bullnose	4.00			4730.00	60.00 Bottom Packers & Anchor
<b>Total Tool Length:</b>	<b>87.00</b>				



**TRILOBITE  
TESTING, INC**

# DRILL STEM TEST REPORT

**FLUID SUMMARY**

Raydon Exploration Inc.

**25-28s-34w Haskell,KS**

1601 nw Expressway  
Ste 1300  
Oklahoma City, OK 73118  
ATTN: Edw in H Grieves

**Toro #1-25**  
Job Ticket: 58633      **DST#: 2**  
Test Start: 2014.11.24 @ 02:00:00

## Mud and Cushion Information

Mud Type: Gel Chem	Cushion Type:	Oil API:	0 deg API
Mud Weight: 9.00 lb/gal	Cushion Length: ft	Water Salinity:	0 ppm
Viscosity: 56.00 sec/qt	Cushion Volume: bbl		
Water Loss: 5.59 in <sup>3</sup>	Gas Cushion Type:		
Resistivity: ohm.m	Gas Cushion Pressure: psig		
Salinity: 1500.00 ppm			
Filter Cake: 1.00 inches			

## Recovery Information

Recovery Table

Length ft	Description	Volume bbl
252.00	gmco 60g 20m 20o	1.358
63.00	gocm 5g 10o 85m	0.884
30.00	gocm 10g 20o 70m	0.421

Total Length: 345.00 ft      Total Volume: 2.663 bbl

Num Fluid Samples: 0      Num Gas Bombs: 0      Serial #:

Laboratory Name:      Laboratory Location:

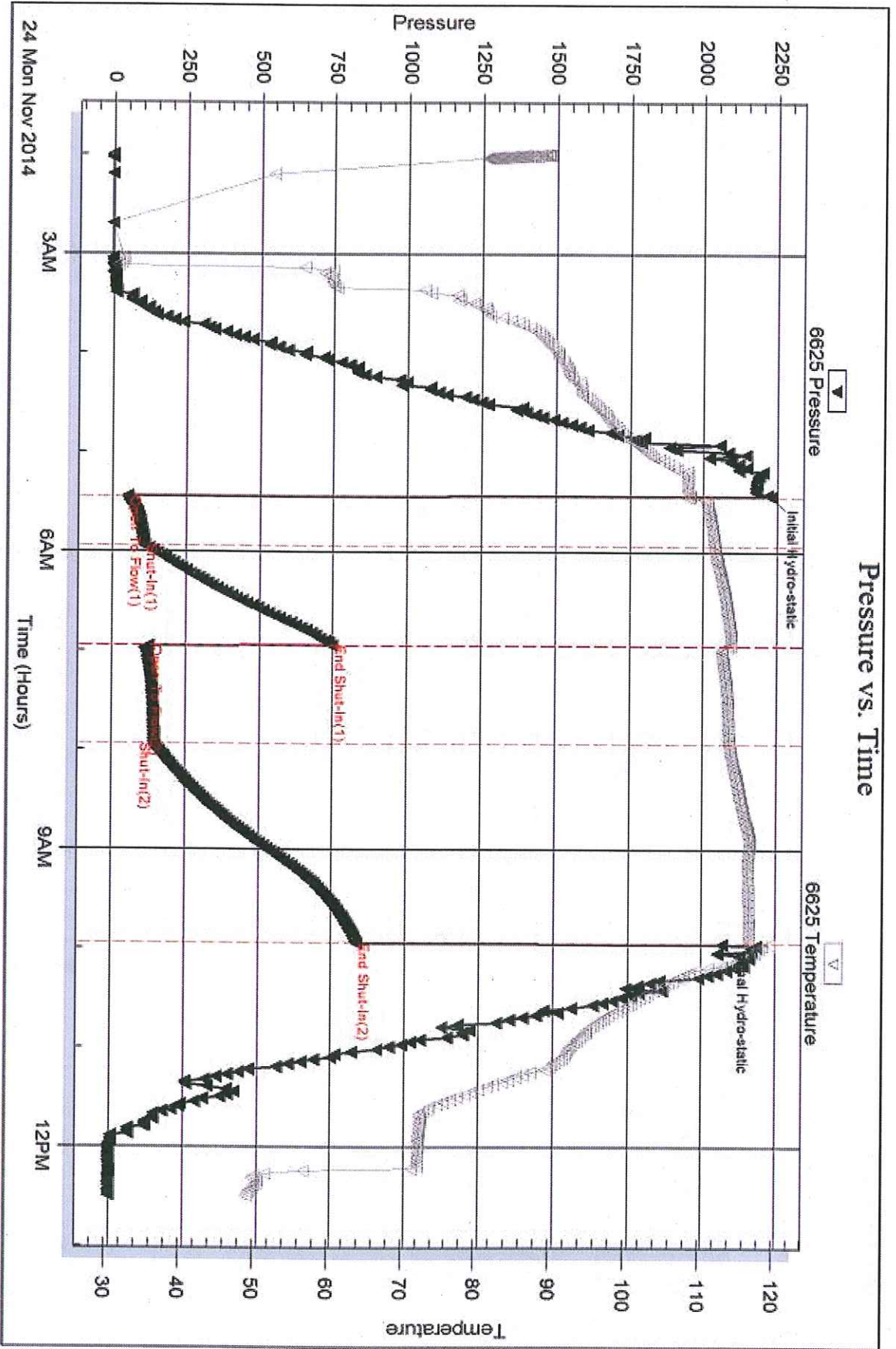
Recovery Comments:

Serial #: 6625

Outside Raydon Exploration Inc.

Toro #1-25

DST Test Number: 2



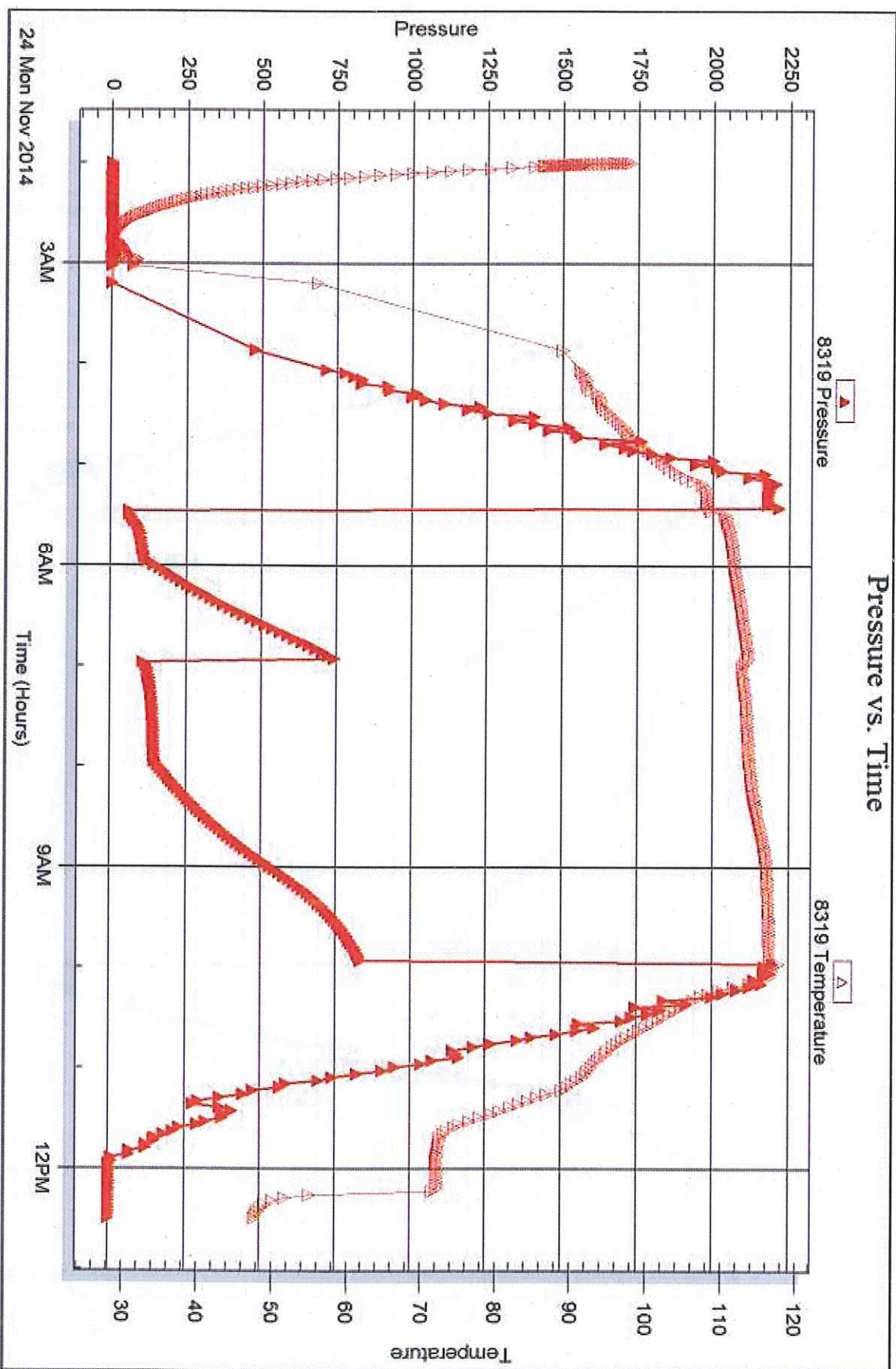
Serial #: 8319

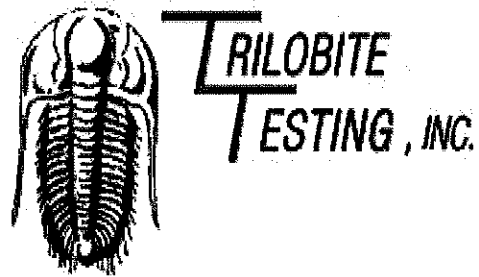
Inside

Raydon Exploration Inc.

Toro #1-25

DST Test Number: 2





## DRILL STEM TEST REPORT

Prepared For: **Raydon Exploration Inc.**

1601 nw Expressway  
Ste 1300  
Oklahoma City, OK 73118

ATTN: Edwin H Grieves

**Toro #1-25**

**25-28s-34w Haskell,KS**

Start Date: 2014.11.27 @ 08:53:00

End Date: 2014.11.27 @ 21:10:30

Job Ticket #: 56580                      DST #: 3

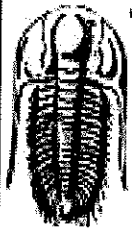
Trilobite Testing, Inc

1515 Commerce Parkway Hays, KS 67601

ph: 785-625-4778 fax: 785-625-5620

Printed: 2014.12.02 @ 09:47:27

Raydon Exploration Inc. 25-28s-34w Haskell,KS Toro #1-25 DST # 3 Morrow Sand 2014.11.27



**TRILOBITE TESTING, INC**

# DRILL STEM TEST REPORT

Raydon Exploration Inc.  
1601 nw Expressway  
Ste 1300  
Oklahoma City, OK 73118  
ATTN: Edw in H Grieves

**25-28s-34w Haskell,KS**  
**Toro #1-25**  
Job Ticket: 56580 **DST#: 3**  
Test Start: 2014.11.27 @ 08:53:00

## GENERAL INFORMATION:

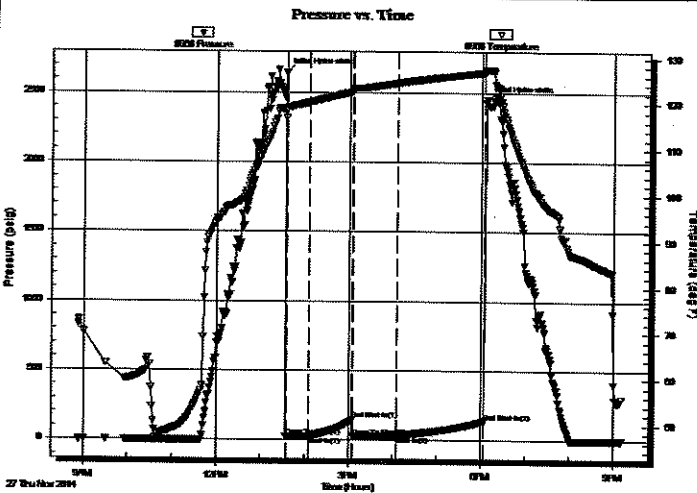
Formation: **Morrow Sand**  
Deviated: No Whipstock: ft (KB)  
Time Tool Opened: 13:34:45  
Time Test Ended: 21:10:30  
Interval: **5317.00 ft (KB) To 5347.00 ft (KB) (TVD)**  
Total Depth: 5347.00 ft (KB) (TVD)  
Hole Diameter: 7.88 inches Hole Condition: Good  
Test Type: Conventional Bottom Hole (Initial)  
Tester: Cornelio Landa III  
Unit No: 44  
Reference Elevations: 2982.00 ft (KB)  
2974.00 ft (CF)  
KB to GR/CF: 8.00 ft

## Serial #: 8968

Outside

Press@RunDepth: 30.87 psig @ 5319.00 ft (KB)  
Start Date: 2014.11.27 End Date: 2014.11.27  
Start Time: 08:53:05 End Time: 21:10:30  
Capacity: 8000.00 psig  
Last Calib.: 2014.11.27  
Time On Btm: 2014.11.27 @ 13:34:30  
Time Off Btm: 2014.11.27 @ 18:07:00

TEST COMMENT: IF: Weak surface blow -Built to 1/4"  
IS: No return  
FF: No blow  
FS: No return



## PRESSURE SUMMARY

Time (Min.)	Pressure (psig)	Temp (deg F)	Annotation
0	2640.42	118.61	Initial Hydro-static
1	20.88	117.00	Open To Flow (1)
31	23.19	120.28	Shut-in(1)
90	143.63	122.61	End Shut-in(1)
91	24.89	123.03	Open To Flow (2)
151	30.87	124.48	Shut-in(2)
270	135.41	126.84	End Shut-in(2)
273	2447.31	127.46	Final Hydro-static

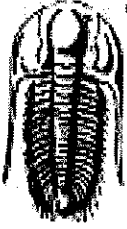
## Recovery

Length (ft)	Description	Volume (bbl)
5.00	Mud w/traces of oil 100m	0.02

## Gas Rates

	Choke (inches)	Pressure (psig)	Gas Rate (Mcf/d)





**TRILOBITE  
TESTING, INC**

# DRILL STEM TEST REPORT

Raydon Exploration Inc.  
1601 nw Expressway  
Ste 1300  
Oklahoma City, OK 73118  
ATTN: Edw in H Grieves

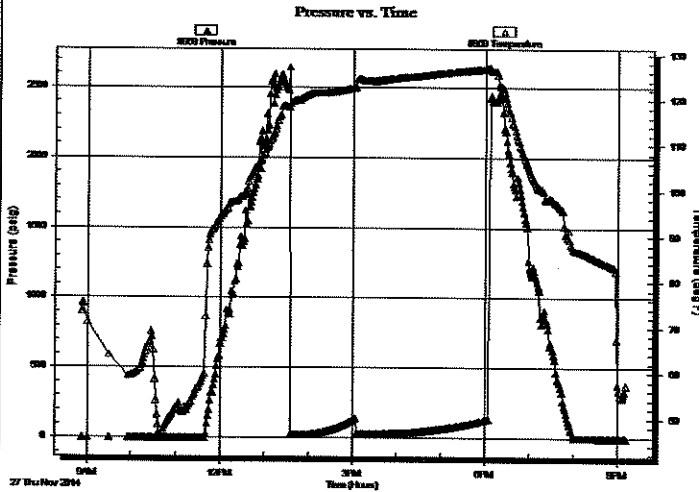
**25-28s-34w Haskell,KS**  
**Toro #1-25**  
Job Ticket: 56580      **DST#: 3**  
Test Start: 2014.11.27 @ 08:53:00

## GENERAL INFORMATION:

Formation: **Morrow Sand**  
Deviated: No      Whipstock:      ft (KB)  
Time Tool Opened: 13:34:45  
Time Test Ended: 21:10:30  
Interval: **5317.00 ft (KB) To 5347.00 ft (KB) (TVD)**  
Total Depth: 5347.00 ft (KB) (TVD)  
Hole Diameter: 7.88 inches      Hole Condition: Good  
Test Type: Conventional Bottom Hole (Initial)  
Tester: Cornelio Landa III  
Unit No: 44  
Reference Elevations: 2982.00 ft (KB)  
2974.00 ft (CF)  
KB to GR/CF: 8.00 ft

**Serial #: 8969      Inside**  
Press@RunDepth:      psig @      5319.00 ft (KB)      Capacity: 8000.00 psig  
Start Date: 2014.11.27      End Date: 2014.11.27      Last Calib.: 2014.11.27  
Start Time: 08:53:05      End Time: 21:10:30      Time On Btm:  
Time Off Btm:

TEST COMMENT: IF: Weak surface blow -Built to 1/4"  
IS: No return  
FF: No blow  
FS: No return



## PRESSURE SUMMARY

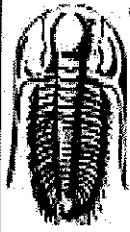
Time (Min.)	Pressure (psig)	Temp (deg F)	Annotation

## Recovery

Length (ft)	Description	Volume (bbl)
5.00	Mud w /traces of oil 100m	0.02

## Gas Rates

Choke (inches)	Pressure (psig)	Gas Rate (Mcf/d)



**TRILOBITE  
TESTING, INC.**

# DRILL STEM TEST REPORT

**TOOL DIAGRAM**

Raydon Exploration Inc.

**25-28s-34w Haskell, KS**

1601 nw Expressway  
Ste 1300  
Oklahoma City, OK 73118  
ATTN: Edw in H Grieves

**Toro #1-25**  
Job Ticket: 56580      **DST#: 3**  
Test Start: 2014.11.27 @ 08:53:00

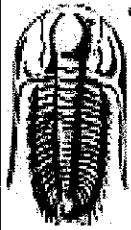
**Tool Information**

Drill Pipe:	Length: 5075.00 ft	Diameter: 3.80 inches	Volume: 71.19 bbl	Tool Weight: 2500.00 lb
Heavy Wt. Pipe:	Length: 0.00 ft	Diameter: 0.00 inches	Volume: 0.00 bbl	Weight set on Packer: 28000.00 lb
Drill Collar:	Length: 240.00 ft	Diameter: 2.25 inches	Volume: 1.18 bbl	Weight to Pull Loose: 10000.00 lb
			<u>Total Volume: 72.37 bbl</u>	Tool Chased 0.00 ft
Drill Pipe Above KB:	25.00 ft			String Weight: Initial 78000.00 lb
Depth to Top Packer:	5317.00 ft			Final 78000.00 lb
Depth to Bottom Packer:	ft			
Interval between Packers:	30.00 ft			
Tool Length:	57.00 ft			
Number of Packers:	2	Diameter: 6.75 inches		

Tool Comments:

Tool Description	Length (ft)	Serial No.	Position	Depth (ft)	Accum. Lengths
Change Over Sub	1.00			5291.00	
Shut In Tool	5.00			5296.00	
Hydraulic tool	5.00			5301.00	
Jars	5.00			5306.00	
Safety Joint	2.00			5308.00	
Packer	5.00			5313.00	27.00      Bottom Of Top Packer
Packer	4.00			5317.00	
Stubb	1.00			5318.00	
Perforations	1.00			5319.00	
Recorder	0.00	8969	Inside	5319.00	
Recorder	0.00	8968	Outside	5319.00	
Perforations	25.00			5344.00	
Bullnose	3.00			5347.00	30.00      Bottom Packers & Anchor

**Total Tool Length: 57.00**



**TRILOBITE  
TESTING, INC.**

## DRILL STEM TEST REPORT

**FLUID SUMMARY**

Raydon Exploration Inc.

**25-28s-34w Haskell,KS**

1601 nw Expressway  
Ste 1300  
Oklahoma City, OK 73118  
ATTN: Edw in H Grieves

**Toro #1-25**

Job Ticket: 56580

**DST#: 3**

Test Start: 2014.11.27 @ 08:53:00

### Mud and Cushion Information

Mud Type: Gel Chem  
Mud Weight: 9.00 lb/gal  
Viscosity: 60.00 sec/qt  
Water Loss: 5.98 in<sup>3</sup>  
Resistivity: 0.00 ohm.m  
Salinity: 800.00 ppm  
Filter Cake: 1.00 inches

Cushion Type:  
Cushion Length: ft  
Cushion Volume: bbl  
Gas Cushion Type:  
Gas Cushion Pressure: psig

Oil API: deg API  
Water Salinity: ppm

### Recovery Information

Recovery Table

Length ft	Description	Volume bbl
5.00	Mud w/traces of oil 100m	0.025

Total Length: 5.00 ft      Total Volume: 0.025 bbl

Num Fluid Samples: 0

Num Gas Bombs: 0

Serial #:

Laboratory Name:

Laboratory Location:

Recovery Comments:

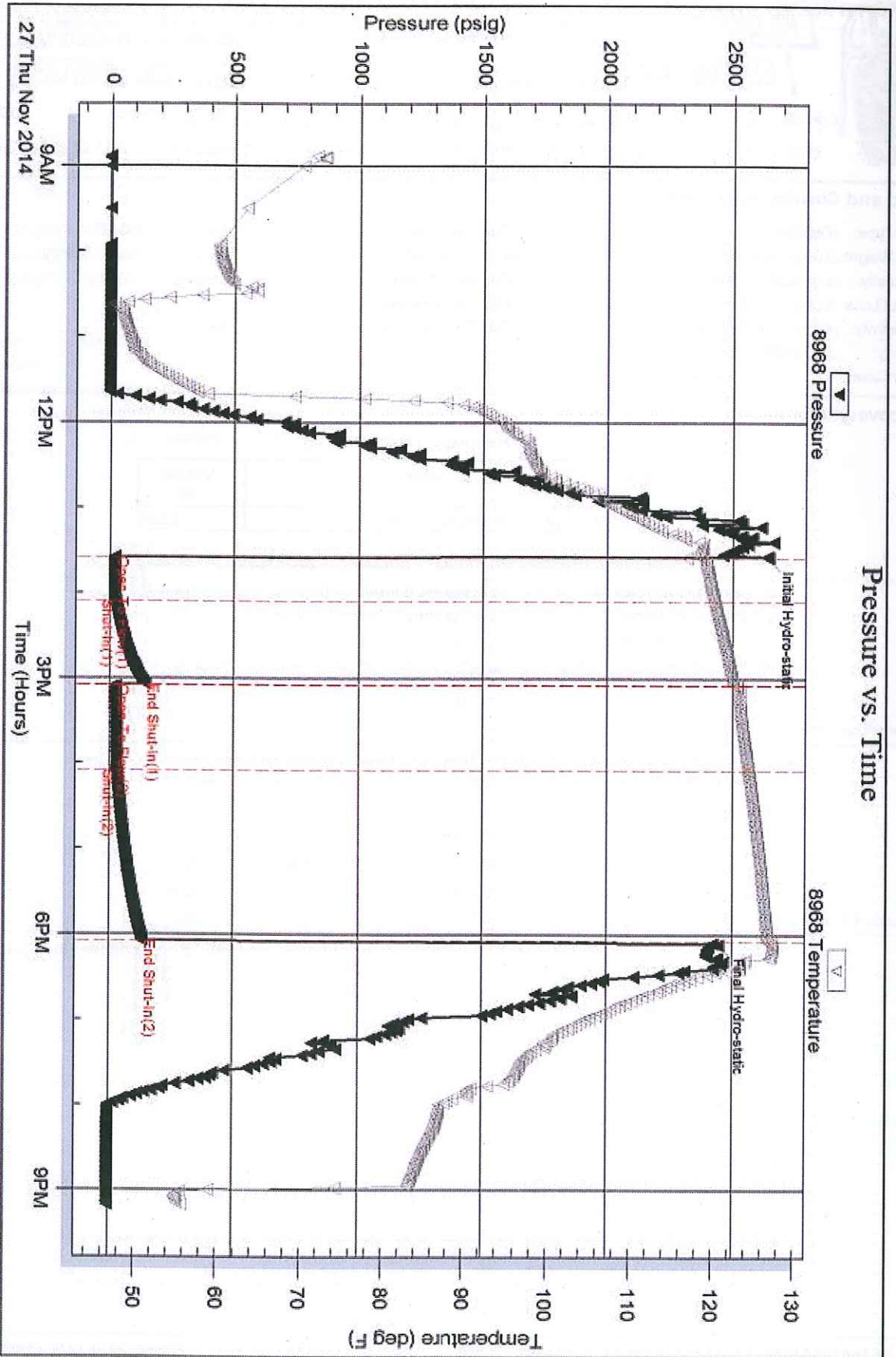
Serial #: 8968

Outside Raydon Exploration Inc.

Toro #1-25

DST Test Number: 3

### Pressure vs. Time



Tribble Testing, Inc

Ref. No: 56560

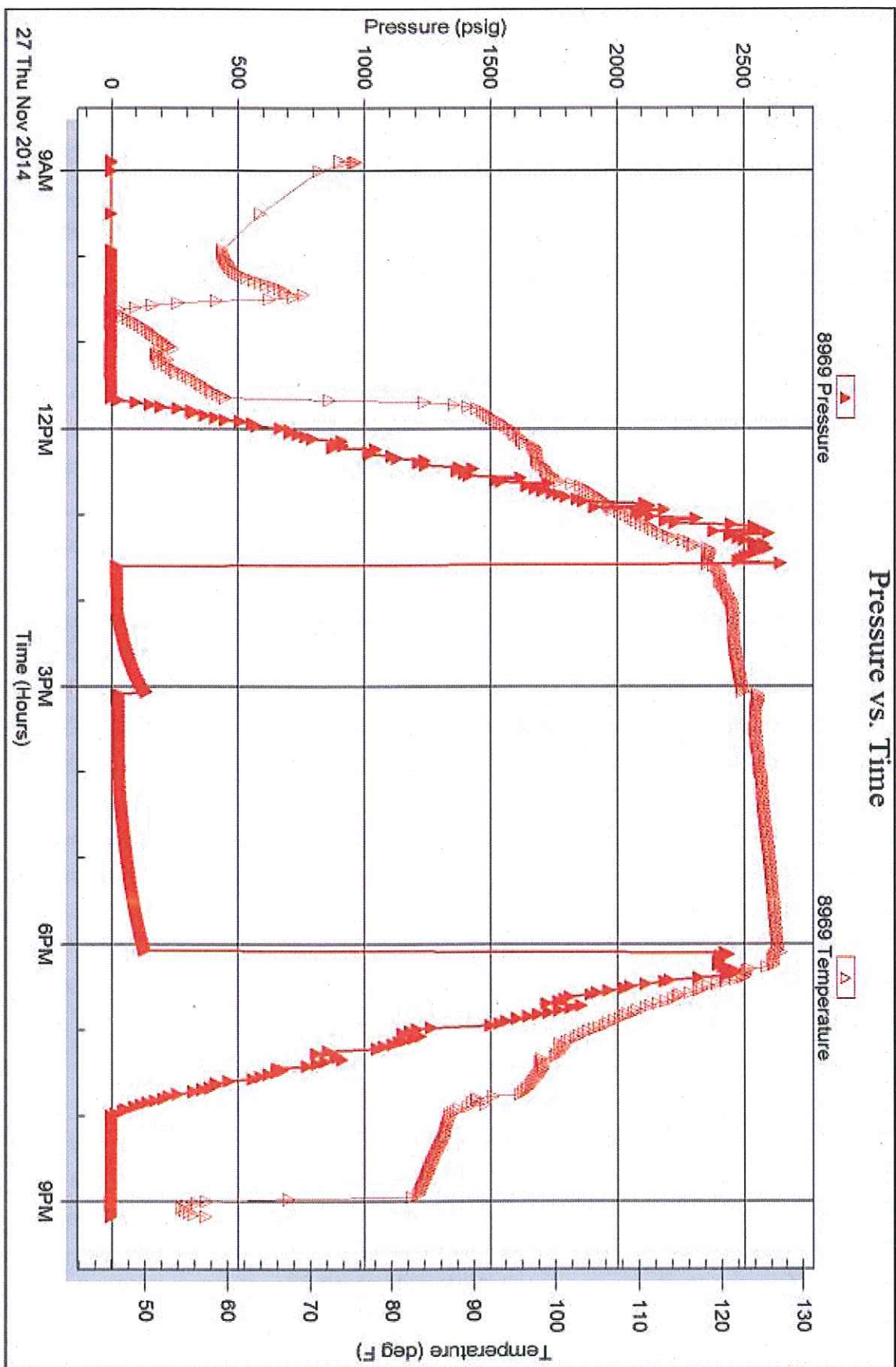
Printed: 2014, 12:02 @ 09:47:28

Serial #: 8969

Inside Raydon Exploration Inc.

Toro #1-25

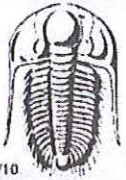
DST Test Number: 3



Tribble Testing, Inc

Ref. No: 56590

Printed: 2014, 12:02 @ 09:47:29



# TRILOBITE TESTING INC.

1515 Commerce Parkway • Hays, Kansas 67601

## Test Ticket

NO. 58604

Well Name & No. Toro #1-25 Test No. 1 Date 11/21/14  
 Company Raydon Exploration Inc Elevation \_\_\_\_\_ KB 2974 GL \_\_\_\_\_  
 Address 1601 NW Expressway 941300 OK City, OK 73118  
 Co. Rep / Geo. Edwin H Brivenc Rig Tom Cat Rig 4  
 Location: Sec. 25 Twp. 28 Rge. 34 Co. Haskell State KS

Interval Tested 4170 - 4185 Zone Tested LANSING "3"  
 Anchor Length 13' Drill Pipe Run 2924 Mud Wt. 42/9.2  
 Top Packer Depth 4168 Drill Collars Run 239 Vis 42  
 Bottom Packer Depth 4170 Wt. Pipe Run Ø WL 6.4  
 Total Depth 4185 Chlorides 2800 ppm System LCM 4

Blow Description IF: BOB in 5 min  
ISI: NO RETURN / Bled off 5 min  
FP: BOB in 11 min  
FST: NO RETURN / Bled off 5 min

Rec	Feet of	%gas	%oil	%water	%mud
<u>797</u>	<u>9 C.O.W</u>	<u>5</u>	<u>3</u>	<u>92</u>	
<u>28</u>	<u>Oil</u>		<u>100</u>		
	<u>OTP 204</u>				

Rec Total 825 BHT 114 Gravity \_\_\_\_\_ API RW 1.6 @ 43 °F Chlorides 6500 ppm

(A) Initial Hydrostatic 2008  Test 1250 T-On Location 0500  
 (B) First Initial Flow 67  Jars 250 T-Started 0601  
 (C) First Final Flow 251  Safety Joint 75 T-Open 0907  
 (D) Initial Shut-In 577  Circ Sub 1/2 T-Pulled 1337  
 (E) Second Initial Flow 270  Hourly Standby .5h 50 T-Out 1629  
 (F) Second Final Flow 408  Mileage 150% 120.90  
 (G) Final Shut-In 572  Sampler \_\_\_\_\_  
 (H) Final Hydrostatic 1964  Straddle \_\_\_\_\_  
 Shale Packer \_\_\_\_\_  
 Extra Packer \_\_\_\_\_  
 Extra Recorder \_\_\_\_\_  
 Day Standby \_\_\_\_\_

Initial Open 30  Ruined Shale Packer \_\_\_\_\_  
 Initial Shut-In 60  Ruined Packer \_\_\_\_\_  
 Final Flow 60  Extra Copies \_\_\_\_\_  
 Final Shut-In 120  Day Standby \_\_\_\_\_  
 Accessibility 150 150 Sub Total 0  
 Sub Total 1895.90 Total 1895.90  
 MP/DST Disc't \_\_\_\_\_

Approved By \_\_\_\_\_ Our Representative [Signature]

Trilobite Testing Inc. shall not be liable for damaged of any kind of the property or personnel of the one for whom a test is made, or for any loss suffered or sustained, directly or indirectly, through the use of its equipment, or its statements or opinion concerning the results of any test, tools lost or damaged in the hole shall be paid for at cost by the party for whom the test is made.



# TRILOBITE TESTING INC.

1515 Commerce Parkway • Hays, Kansas 67601

## Test Ticket

NO. 58605

Well Name & No. <u>1020 # 1-25</u>	Test No. <u>YA</u>	Date <u>11/23/14</u>
Company <u>Raydon Exp. Inc</u>	Elevation <u>2983</u>	KB <u>2974</u> GL
Address <u>1601 NW Expressway Ste 1300 Ok City, OK 73118</u>		
Co. Rep / Geo <u>Edwin H Brieves</u>	Rig <u>Sam Cat Rig</u>	
Location: Sec. <u>25</u> Twp <u>28</u> Rge <u>34</u>	Co. <u>Haskell</u>	State <u>KS</u>

Interval Tested _____	Zone Tested _____
Anchor Length _____	Drill Pipe Run _____ Mud Wt. _____
Top Packer Depth _____	Drill Collars Run _____ Vis _____
Bottom Packer Depth _____	Wt. Pipe Run _____ WL _____
Total Depth _____	Chlorides _____ ppm System LCM _____
Blow Description _____	

Rec	Feet of	%gas	%oil	%water	%mud
Rec	Feet of	%gas	%oil	%water	%mud
Rec	Feet of	%gas	%oil	%water	%mud
Rec	Feet of	%gas	%oil	%water	%mud
Rec	Feet of	%gas	%oil	%water	%mud

Rec Total _____	BHT _____	Gravity _____	API RW _____	@ _____	F Chlorides _____	ppm
(A) Initial Hydrostatic _____	<input checked="" type="checkbox"/> Test <u>Stand by</u>	T-On Location _____				
(B) First Initial Flow _____	<input checked="" type="checkbox"/> Jars _____	T-Started _____				
(C) First Final Flow _____	<input checked="" type="checkbox"/> Safety Joint _____	T-Open _____				
(D) Initial Shut-In _____	<input checked="" type="checkbox"/> Circ Sub <u>nc</u>	T-Pulled _____				
(E) Second Initial Flow _____	<input type="checkbox"/> Hourly Standby _____	T-Out _____				
(F) Second Final Flow _____	<input type="checkbox"/> Mileage _____	Comments _____				
(G) Final Shut-In _____	<input type="checkbox"/> Sampler _____					
(H) Final Hydrostatic _____	<input type="checkbox"/> Straddle _____	<input type="checkbox"/> Ruined Shale Packer _____				
	<input type="checkbox"/> Shale Packer _____	<input type="checkbox"/> Ruined Packer _____				
Initial Open _____	<input type="checkbox"/> Extra Packer _____	<input type="checkbox"/> Extra Copies _____				
Initial Shut-In _____	<input type="checkbox"/> Extra Recorder _____	Sub Total _____				
Final Flow _____	<input checked="" type="checkbox"/> Day Standby _____	Total _____				
Final Shut-In _____	<input type="checkbox"/> Accessibility _____	MP/DST Disc't _____				
	Sub Total _____					

Approved By \_\_\_\_\_ Our Representative [Signature]

Trilobite Testing Inc. shall not be liable for damaged of any kind of the property or personnel of the one for whom a test is made, or for any loss suffered or sustained, directly or indirectly, through the use of its equipment, or its statements or opinion concerning the results of any test, tools lost or damaged in the hole shall be paid for at cost by the party for whom the test is made.



# TRILOBITE TESTING INC.

1515 Commerce Parkway • Hays, Kansas 67601

## Test Ticket

NO. 58633

Well Name & No. Toro 1-25 Test No. 2 Date 11-24-14  
 Company Raydon Exploration Inc Elevation 2982 KB 2977 GL  
 Address 1601 nw expressway street BCO Oklahoma City, OK 73118  
 Co. Rep / Geo. Edwin H Gries Rig Tom Cat #4  
 Location: Sec. 25 Twp. 28S Rge. 34W Co. Haskell State KS

Interval Tested 4670 4730 Zone Tested Marmaton "B"  
 Anchor Length 60 Drill Pipe Run 4417 Mud Wt. 8.9  
 Top Packer Depth 4666 Drill Collars Run 239 Vis 56  
 Bottom Packer Depth 4670 Wt. Pipe Run Ø WL 5.6  
 Total Depth 4730 Chlorides 1500 ppm System LCM 6  
 Blow Description 30 B.O.B in 2 1/2 min.  
60 No Return  
60 B.O.B in 1 min  
120 No Return

Rec	Feet of	%gas	%oil	%water	%mud
<u>252</u>	<u>gmco</u>	<u>60%</u>	<u>20%</u>	<u>20%</u>	<u>20%</u>
<u>63</u>	<u>gocm</u>	<u>5%</u>	<u>10%</u>	<u>85%</u>	<u>85%</u>
<u>30</u>	<u>gocm</u>	<u>10%</u>	<u>20%</u>	<u>70%</u>	<u>70%</u>
Rec	Feet of	%gas	%oil	%water	%mud
Rec	Feet of	%gas	%oil	%water	%mud

Rec Total 345 BHT 111 Gravity - API RW - @ - °F Chlorides - ppm  
 (A) Initial Hydrostatic 2229  Test 1250 T-On Location 1:50  
 (B) First Initial Flow 53  Jars 250 T-Started 2:00  
 (C) First Final Flow 109  Safety Joint 75 T-Open 5:26  
 (D) Initial Shut-In 747  Circ Sub N/C T-Pulled 9:56  
 (E) Second Initial Flow 124  Hourly Standby .5h 50 T-Out 12:30  
 (F) Second Final Flow 144  Mileage 156 RT 78rt 120.90 Comments \_\_\_\_\_  
 (G) Final Shut-In 834  Sampler \_\_\_\_\_  
 (H) Final Hydrostatic 2070  Straddle \_\_\_\_\_

Initial Open 30  Shale Packer 250  Ruined Shale Packer \_\_\_\_\_  
 Initial Shut-In 60  Extra Packer \_\_\_\_\_  Ruined Packer \_\_\_\_\_  
 Final Flow 60  Extra Recorder \_\_\_\_\_ Sub Total 1108.33  
 Final Shut-In 120  Day Standby 2d 9.25h Total 3254.23  
 Accessibility 150 MP/DST Disc't \_\_\_\_\_  
 Sub Total 2145.90

Approved By [Signature] Our Representative [Signature]  
 Trilobite Testing Inc. shall not be liable for damaged or any kind of the property or personnel of the one for whom a test is made, or for any loss suffered or sustained, directly or indirectly, through the use of its equipment, or its statements or opinion concerning the results of any test, tools lost or damaged in the hole shall be paid for at cost by the party for whom the test is made.





# TRILOBITE TESTING INC.

1515 Commerce Parkway • Hays, Kansas 67601

## Test Ticket

NO. 56580

Well Name & No. Toro # 1-25 Test No. 3 Date 11-27-14  
 Company Raydon Exploration, Inc. Elevation 2984 KB 2974 -GL  
 Address 1601 NW Expressway, Ste #1300 - Oklahoma City, OK 73168  
 Co. Rep / Geo. Ed Grieres Rig Tom cat #4  
 Location: Sec. 25 Twp. 28-S Rge. 34-W Co. Haskell State KS

Interval Tested 5317-5347 Zone Tested Morrow Sands  
 Anchor Length 30' Drill Pipe Run 5075 Mud Wt. 9.0  
 Top Packer Depth 5313 Drill Collars Run 240 Vis 600  
 Bottom Packer Depth 5317 Wt. Pipe Run 0 WL 6.0  
 Total Depth 5347 Chlorides 800 ppm System LCM #8 Pan Plug

Blow Description IF: Weak surface blow - Built to 14 in. blow  
ISI: No Return  
FF: No Blow  
F&I: No Return

Rec	Feet of	%gas	%oil	%water	%mud
Rec	Feet of	%gas	%oil	%water	%mud
Rec <u>5</u>	Feet of <u>Mud w/ traces of oil</u>	%gas	%oil	%water	<u>100% mud</u>
Rec	Feet of	%gas	%oil	%water	%mud
Rec	Feet of	%gas	%oil	%water	%mud

Rec Total 5 BHT 128 Gravity — API RW — @ — ° F Chlorides — ppm

(A) Initial Hydrostatic 2640  Test 1350 T-On Location 8:50  
 (B) First Initial Flow 21  Jars 250 T-Started 8:53  
 (C) First Final Flow 23  Safety Joint 75 T-Open 13:35  
 (D) Initial Shut-In 144  Circ Sub NIC T-Pulled 18:05  
 (E) Second Initial Flow 25  Hourly Standby — T-Out 2:10  
 (F) Second Final Flow 31  Mileage 104 RIT 241.80 Comments on location 11-30-14 @  
 (G) Final Shut-In 135  Sampler — 14:40 = 29 1/2 hrs stand by  
 (H) Final Hydrostatic 2447  Straddle —  Ruined Shale Packer —

Shale Packer x 2 Top & Bottom  Ruined Packer —  
 Initial Open 30  Extra Packer —  Extra Copies —  
 Initial Shut-In 60  Extra Recorder — Sub Total 1600  
 Final Flow 60  Day Standby 1.5d 29.5h Total 4166.80  
 Final Shut-In 120  Accessibility No steps to Rig 150MP/DST Disc't —  
 Sub Total 2566.80

Approved By [Signature] Our Representative [Signature]  
 Trilobite Testing Inc. shall not be liable for damaged or any kind of the property or personnel of the one for whom a test is made, or for any loss suffered or sustained, directly or indirectly, through the use of its equipment, or its statements or opinion concerning the results of any test, tools lost or damaged in the hole shall be paid for at cost by the party for whom the test is made.