



DRILL STEM TEST REPORT

Prepared For: **Shelby Resources LLC**

445 Union Blvd Suite 208
Lakewood ,Colorado

ATTN: Jeremy Schwartz

Janice Unit #1-2

2-28s-14w Barton

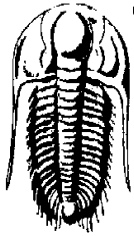
Start Date: 2015.02.09 @ 00:00:00

End Date: 2015.02.09 @ 00:00:00

Job Ticket #: 62070 DST #: 1

Trilobite Testing, Inc
PO Box 362 Hays, KS 67601
ph: 785-625-4778 fax: 785-625-5620

Printed: 2015.02.09 @ 15:07:43



TRILOBITE TESTING, INC.

DRILL STEM TEST REPORT

Shelby Resources LLC
 445 Union Blvd Suite 208
 Lakewood, Colorado
 ATTN: Jeremy Schwartz

2-28s-14w Barton
Janice Unit #1-2
 Job Ticket: 62070 **DST#: 1**
 Test Start: 2015.02.09 @ 00:00:00

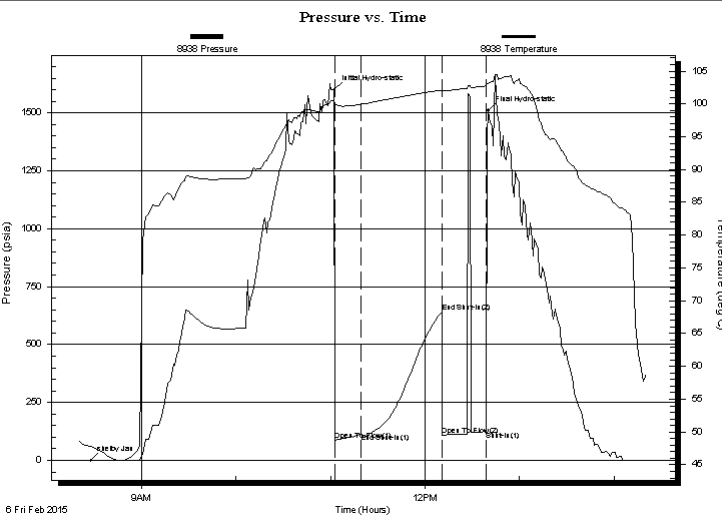
GENERAL INFORMATION:

Formation: **Lansing "A-F"**
 Deviated: No Whipstock: ft (KB)
 Time Tool Opened: 00:00:00
 Time Test Ended: 00:00:00
 Interval: **3106.00 ft (KB) To 3181.00 ft (KB) (TVD)**
 Total Depth: 3181.00 ft (KB) (TVD)
 Hole Diameter: 7.88 inches Hole Condition: Fair
 Test Type: Conventional Bottom Hole (Initial)
 Tester: Gene Budig
 Unit No: 60
 Reference Elevations: 1850.00 ft (KB)
 1841.00 ft (CF)
 KB to GR/CF: 9.00 ft

Serial #: 8938

Press @ RunDepth: 642.57 psia @ ft (KB) Capacity: psia
 Start Date: 2015.02.06 End Date: 2015.02.06 Last Calib.: 1899.12.30
 Start Time: 08:21:00 End Time: 14:20:30 Time On Btm: 2015.02.06 @ 11:02:30
 Time Off Btm: 2015.02.06 @ 12:40:00

TEST COMMENT: 1st Opening 15 Minutes weak blow build to 3 1/2 inches into the water
 1st Shut-In 45 Minutes no blow back
 2nd Opening 25 Minutes-Weak blow for 12 minutes and died flushed tool good surge weak blow for 2 minutes and died came out of the hole no final shut-in taken



PRESSURE SUMMARY

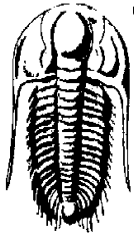
Time (Min.)	Pressure (psia)	Temp (deg C)	Annotation
0	-1.83	47.78	shelby Jan
155	1599.30	100.47	Initial Hydro-static
155	84.70	100.00	Open To Flow (1)
172	117.43	99.95	End Shut-In(1)
223	642.57	102.09	End Shut-In(2)
223	108.47	101.97	Open To Flow (2)
251	123.63	102.74	Shut-In(1)
252	1509.76	103.14	Final Hydro-static

Recovery

Length (ft)	Description	Volume (bbl)
130.00	drilling mud with a good show of dead	0.64
0.00	oil between the tools	0.00

Gas Rates

	Choke (inches)	Pressure (psia)	Gas Rate (Mcf/d)



**TRILOBITE
TESTING, INC.**

DRILL STEM TEST REPORT

TOOL DIAGRAM

Shelby Resources LLC

2-28s-14w Barton

445 Union Blvd Suite 208
Lakewood, Colorado

Janice Unit #1-2

Job Ticket: 62070

DST#: 1

ATTN: Jeremy Schwartz

Test Start: 2015.02.09 @ 00:00:00

Tool Information

Drill Pipe:	Length: 2885.00 ft	Diameter: 3.80 inches	Volume: 40.47 bbl	Tool Weight: 2000.00 lb
Heavy Wt. Pipe:	Length: 0.00 ft	Diameter: 0.00 inches	Volume: 0.00 bbl	Weight set on Packer: 20000.00 lb
Drill Collar:	Length: 208.00 ft	Diameter: 2.25 inches	Volume: 1.02 bbl	Weight to Pull Loose: 72000.00 lb
			<u>Total Volume: 41.49 bbl</u>	Tool Chased 0.00 ft
Drill Pipe Above KB:	15.00 ft			String Weight: Initial 60000.00 lb
Depth to Top Packer:	3106.00 ft			Final 60000.00 lb
Depth to Bottom Packer:	ft			
Interval between Packers:	74.47 ft			
Tool Length:	102.47 ft			
Number of Packers:	2	Diameter: 6.75 inches		

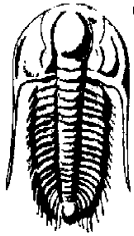
Tool Comments:

Tool Description

Length (ft) Serial No. Position Depth (ft) Accum. Lengths

Tool Description	Length (ft)	Serial No.	Position	Depth (ft)	Accum. Lengths
Shut In Tool	5.00			3083.00	
Hydraulic tool	5.00			3088.00	
Jars	6.00			3094.00	
Safety Joint	2.00			3096.00	
Top Packer	5.00			3101.00	
Packer	5.00			3106.00	28.00 Bottom Of Top Packer
Anchor	6.00			3112.00	
Change Over Sub	0.75			3112.75	
Drill Pipe	31.97			3144.72	
Change Over Sub	0.75			3145.47	
Anchor	30.00			3175.47	
Recorder	0.00		Inside	3175.47	
Recorder	0.00		Outside	3175.47	
Bullnose	5.00			3180.47	74.47 Anchor Tool

Total Tool Length: 102.47



**TRILOBITE
TESTING, INC.**

DRILL STEM TEST REPORT

FLUID SUMMARY

Shelby Resources LLC

2-28s-14w Barton

445 Union Blvd Suite 208
Lakewood, Colorado

Janice Unit #1-2

Job Ticket: 62070

DST#: 1

ATTN: Jeremy Schwartz

Test Start: 2015.02.09 @ 00:00:00

Mud and Cushion Information

Mud Type: Gel Chem

Cushion Type:

Oil API:

deg API

Mud Weight: 9.00 lb/gal

Cushion Length:

ft

Water Salinity:

ppm

Viscosity: 68.00 sec/qt

Cushion Volume:

bbbl

Water Loss: 9.39 in³

Gas Cushion Type:

Resistivity: ohm.m

Gas Cushion Pressure:

psia

Salinity: 8200.00 ppm

Filter Cake: inches

Recovery Information

Recovery Table

Length ft	Description	Volume bbbl
130.00	drilling mud with a good show of dead	0.639
0.00	oil between the tools	0.000

Total Length: 130.00 ft

Total Volume: 0.639 bbl

Num Fluid Samples: 0

Num Gas Bombs: 0

Serial #:

Laboratory Name:

Laboratory Location:

Recovery Comments:

