



**TRILOBITE
TESTING, INC.**

DRILL STEM TEST REPORT

Culbreath Oil & Gas Co. Inc.

22 10s 30w Sheridan KS

1532 S Peiria Ave
Tulsa OK 74120-6202

Hawkeye 1-22

Job Ticket: 61388

DST#: 3

ATTN: Anthony Luna

Test Start: 2015.01.08 @ 21:32:00

GENERAL INFORMATION:

Formation: **LKC " H "**

Deviated: No Whipstock: ft (KB)

Time Tool Opened: 23:33:00

Time Test Ended: 04:18:00

Test Type: Conventional Bottom Hole (Reset)

Tester: Jim Svaty

Unit No: 76

Interval: 4056.00 ft (KB) To 4090.00 ft (KB) (TVD)

Reference Elevations: 2828.00 ft (KB)

Total Depth: 4090.00 ft (KB) (TVD)

2823.00 ft (CF)

Hole Diameter: 7.88 inches Hole Condition: Fair

KB to GR/CF: 5.00 ft

Serial #: 8289 Outside

Press @ Run Depth: 97.35 psig @ 4062.00 ft (KB)

Capacity: 8000.00 psig

Start Date: 2015.01.08

End Date:

2015.01.09

Last Calib.:

2015.01.09

Start Time: 21:32:02

End Time:

04:17:45

Time On Btm:

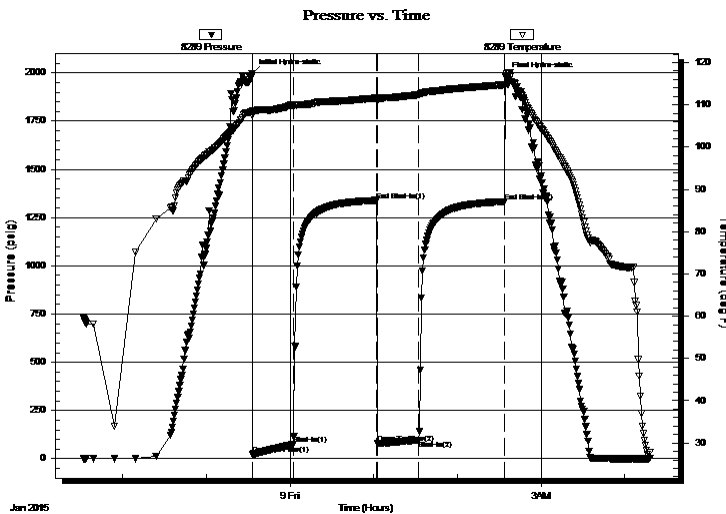
2015.01.08 @ 23:32:45

Time Off Btm:

2015.01.09 @ 02:34:15

TEST COMMENT: 30-IFP- Surface Blow Building to 5 3/4in.
60-ISIP- No Blow
30-FFP- Surface Blow Building to 3 1/2in.
60-FSIP- No Blow

PRESSURE SUMMARY



Time (Min.)	Pressure (psig)	Temp (deg F)	Annotation
0	1997.84	108.40	Initial Hydro-static
1	21.92	107.50	Open To Flow (1)
30	75.58	109.78	Shut-In(1)
90	1339.11	111.63	End Shut-In(1)
90	80.40	110.80	Open To Flow (2)
120	97.35	112.38	Shut-In(2)
181	1332.76	114.73	End Shut-In(2)
182	1981.25	116.75	Final Hydro-static

Recovery

Length (ft)	Description	Volume (bbl)
132.00	MCW 10% m 90% w Show of Oil in Too	0.74

* Recovery from multiple tests

Gas Rates

Choke (inches)	Pressure (psig)	Gas Rate (Mcf/d)



**TRILOBITE
TESTING, INC.**

DRILL STEM TEST REPORT

FLUID SUMMARY

Culbreath Oil & Gas Co. Inc.

22 10s 30w Sheridan KS

1532 S Peiria Ave
Tulsa OK 74120-6202

Hawkeye 1-22

Job Ticket: 61388

DST#: 3

ATTN: Anthony Luna

Test Start: 2015.01.08 @ 21:32:00

Mud and Cushion Information

Mud Type: Gel Chem

Cushion Type:

Oil API:

deg API

Mud Weight: 9.00 lb/gal

Cushion Length:

ft

Water Salinity:

44000 ppm

Viscosity: 48.00 sec/qt

Cushion Volume:

bbbl

Water Loss: 9.17 in³

Gas Cushion Type:

Resistivity: ohm.m

Gas Cushion Pressure:

psig

Salinity: 5000.00 ppm

Filter Cake: 1.00 inches

Recovery Information

Recovery Table

Length ft	Description	Volume bbbl
132.00	MCW 10%m 90%w Show of Oil in Tool	0.740

Total Length: 132.00 ft Total Volume: 0.740 bbl

Num Fluid Samples: 0

Num Gas Bombs: 0

Serial #:

Laboratory Name:

Laboratory Location:

Recovery Comments: .397 @ 30

