



TRILOBITE TESTING, INC

DRILL STEM TEST REPORT

Culbreath Oil And Gas Company

18-10s-30w Sheridan Co KS

1532 S Peoria Ave
Tulsa OK
74120
ATTN: Steve Murphy

Bixenman Brothers118

Job Ticket: 58569 **DST#: 4**
Test Start: 2015.01.22 @ 04:24:15

GENERAL INFORMATION:

Formation: **Pawnee-Myrick Statio**

Deviated: No Whipstock: ft (KB)

Time Tool Opened: 06:22:15

Time Test Ended: 11:22:00

Test Type: Conventional Bottom Hole (Reset)

Tester: Mike Roberts

Unit No: 65

Interval: 4389.00 ft (KB) To 4458.00 ft (KB) (TVD)

Reference Elevations: 2948.00 ft (KB)

Total Depth: 4458.00 ft (KB) (TVD)

2943.00 ft (CF)

Hole Diameter: 7.88 inches Hole Condition: Fair

KB to GR/CF: 5.00 ft

Serial #: 8846

Inside

Press@RunDepth: 166.75 psig @ 4395.00 ft (KB)

Capacity: 8000.00 psig

Start Date: 2015.01.22 End Date: 2015.01.22

Last Calib.: 2015.01.22

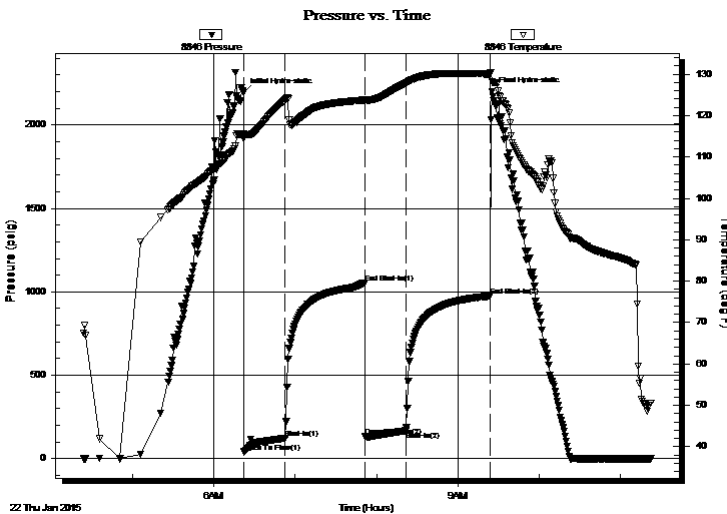
Start Time: 04:24:15 End Time: 11:22:00

Time On Btm: 2015.01.22 @ 06:22:00

Time Off Btm: 2015.01.22 @ 09:25:00

TEST COMMENT: IF:BOB in 27 min.
IS:No return blow
FF:Built to 8" blow
FS:No return blow

PRESSURE SUMMARY



Time (Min.)	Pressure (psig)	Temp (deg F)	Annotation
0	2195.76	115.54	Initial Hydro-static
1	40.90	114.39	Open To Flow (1)
31	123.98	123.72	Shut-In(1)
90	1055.52	123.73	End Shut-In(1)
90	132.69	123.57	Open To Flow (2)
120	166.75	127.82	Shut-In(2)
182	975.48	130.02	End Shut-In(2)
183	2201.50	128.11	Final Hydro-static

Recovery

Length (ft)	Description	Volume (bbl)
61.00	mcw 30% m 70% w	0.30
61.00	w cm 26% m 74% m	0.30
186.00	ocm 2% o 98% m	2.61
0.00	62 Ft GIP	0.00

* Recovery from multiple tests

Gas Rates

	Choke (inches)	Pressure (psig)	Gas Rate (MMcf/d)



**TRILOBITE
TESTING, INC**

DRILL STEM TEST REPORT

FLUID SUMMARY

Culbreath Oil And Gas Company

18-10s-30w Sheridan Co KS

1532 S Peoria Ave
Tulsa OK
74120

Bixenman Brothers118

Job Ticket: 58569

DST#: 4

ATTN: Steve Murphy

Test Start: 2015.01.22 @ 04:24:15

Mud and Cushion Information

Mud Type: Gel Chem

Cushion Type:

Oil API:

0 deg API

Mud Weight: 9.00 lb/gal

Cushion Length:

ft

Water Salinity:

35000 ppm

Viscosity: 51.00 sec/qt

Cushion Volume:

bbbl

Water Loss: 7.97 in³

Gas Cushion Type:

Resistivity: 0.00 ohm.m

Gas Cushion Pressure:

psig

Salinity: 3000.00 ppm

Filter Cake: 1.00 inches

Recovery Information

Recovery Table

Length ft	Description	Volume bbbl
61.00	mcw 30%m 70%w	0.300
61.00	w cm 26%m 74%m	0.300
186.00	ocm 2%o 98%m	2.609
0.00	62 Ft GIP	0.000

Total Length: 308.00 ft

Total Volume: 3.209 bbl

Num Fluid Samples: 0

Num Gas Bombs: 0

Serial #:

Laboratory Name:

Laboratory Location:

Recovery Comments: RW= 40.0 @ 39.4*= 35,000 ppm

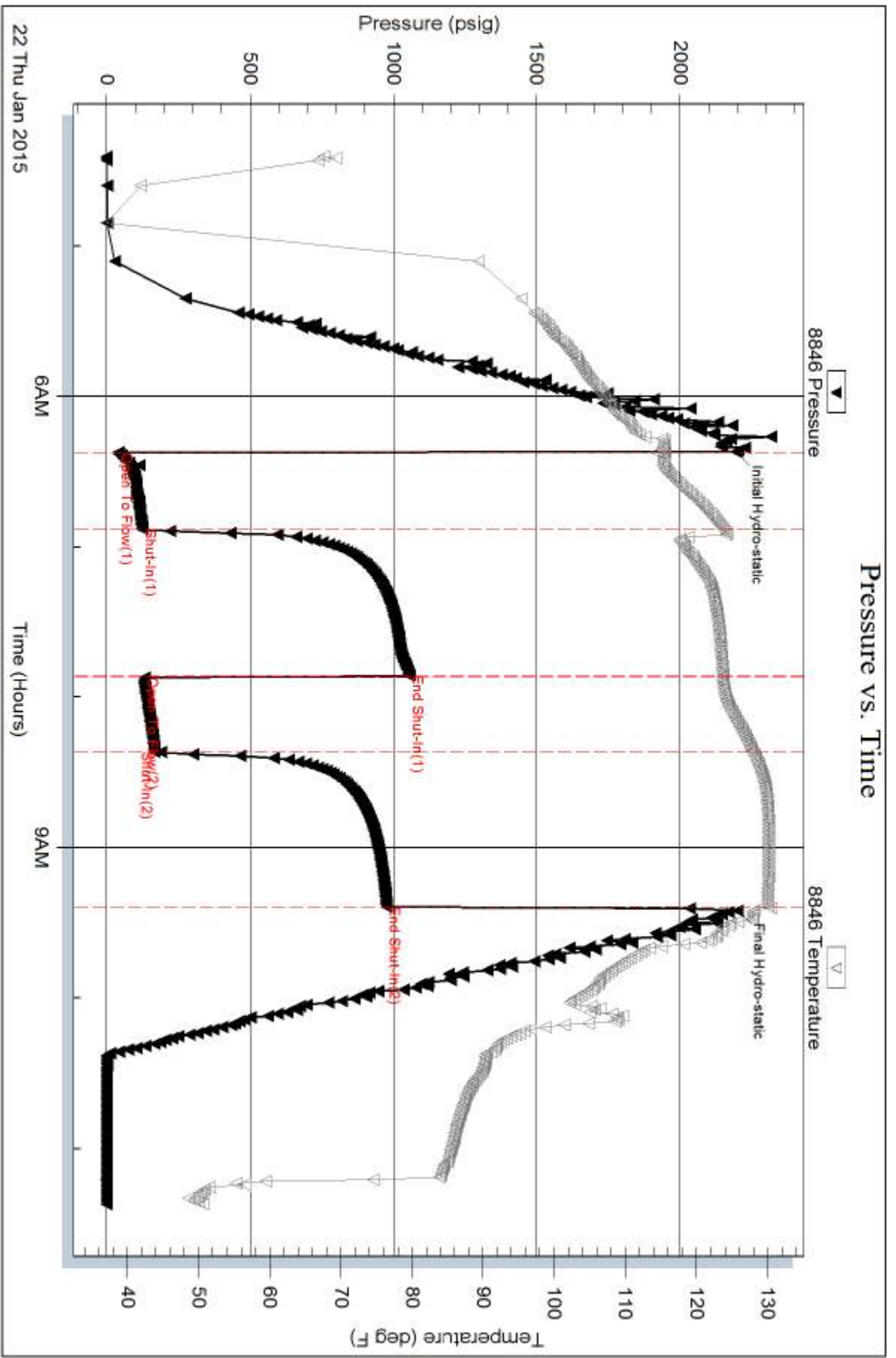
Serial #: 8846

Inside

Culbreath Oil And Gas Company

Bixenman Brothers 118

DST Test Number: 4



Triobite Testing, Inc

Ref. No: 58569

Printed: 2015.01.22 @ 13:28:38