



TRILOBITE TESTING, INC.

DRILL STEM TEST REPORT

Samuel Gary Jr. & Associates, Inc.

34/3s/36w Rawlins KS

1515 Wynkoop STE 700
Denver, CO 80202

Fisher Cattle #1-34

ATTN: Dan Pritchard

Job Ticket: 60799

DST#: 4

Test Start: 2014.11.26 @ 16:30:00

GENERAL INFORMATION:

Formation: **Upper Pawnee**

Deviated: No Whipstock: ft (KB)

Time Tool Opened: 18:57:30

Time Test Ended: 00:58:15

Test Type: Conventional Bottom Hole (Reset)

Tester: James Winder

Unit No: 57

Interval: 4570.00 ft (KB) To 4604.00 ft (KB) (TVD)

Reference Elevations: 3309.00 ft (KB)

Total Depth: 4604.00 ft (KB) (TVD)

3304.00 ft (CF)

Hole Diameter: 7.88 inches Hole Condition: Fair

KB to GR/CF: 5.00 ft

Serial #: 8791

Inside

Press @ Run Depth: 127.96 psig @ 4571.00 ft (KB)

Capacity: 8000.00 psig

Start Date: 2014.11.26 End Date: 2014.11.27

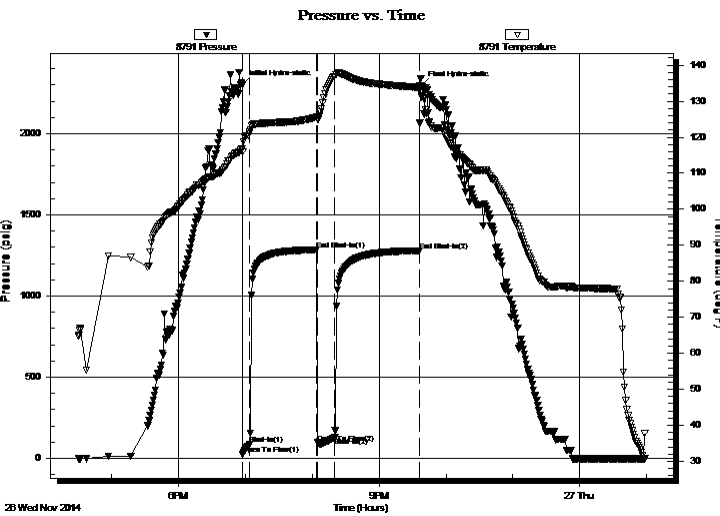
Last Calib.: 2014.11.27

Start Time: 16:30:05 End Time: 00:58:14

Time On Btm: 2014.11.26 @ 18:57:00

Time Off Btm: 2014.11.26 @ 21:37:45

TEST COMMENT: 7 - IF: Blow built to 10 1/2" at close (6 1/2 min.)
60 - IS: Blow back built to 1" then died back to surface blow
15 - FF: Blow built to BOB (11") at 5 min.
60 - FS: Blow back built to 9 1/4"



PRESSURE SUMMARY

Time (Min.)	Pressure (psig)	Temp (deg F)	Annotation
0	2299.61	116.88	Initial Hydro-static
1	23.65	116.00	Open To Flow (1)
7	85.77	121.35	Shut-In(1)
67	1285.04	125.54	End Shut-In(1)
68	95.70	125.02	Open To Flow (2)
83	127.96	136.89	Shut-In(2)
159	1279.63	133.88	End Shut-In(2)
161	2296.15	131.42	Final Hydro-static

Recovery

Length (ft)	Description	Volume (bbl)
130.00	GOCM 59%o, 21%g, 20%g	0.64
185.00	SMCGO 89%o, 9%g, 2%m	2.08
0.00	GIP = 540'	0.00

Gas Rates

	Choke (inches)	Pressure (psig)	Gas Rate (Mcf/d)

* Recovery from multiple tests



**TRILOBITE
TESTING, INC.**

DRILL STEM TEST REPORT

FLUID SUMMARY

Samuel Gary Jr. & Associates, Inc.

34/3s/36w Rawlins KS

1515 Wynkoop STE 700
Denver, CO 80202

Fisher Cattle #1-34

Job Ticket: 60799

DST#: 4

ATTN: Dan Pritchard

Test Start: 2014.11.26 @ 16:30:00

Mud and Cushion Information

Mud Type: Gel Chem
Mud Weight: 9.00 lb/gal
Viscosity: 73.00 sec/qt
Water Loss: 7.19 in³
Resistivity: ohm.m
Salinity: 700.00 ppm
Filter Cake: 1.00 inches

Cushion Type:
Cushion Length: ft
Cushion Volume: bbl
Gas Cushion Type:
Gas Cushion Pressure: psig

Oil API: 36 deg API
Water Salinity: ppm

Recovery Information

Recovery Table

Length ft	Description	Volume bbl
130.00	GOCM 59% <i>m</i> , 21% <i>o</i> , 20% <i>g</i>	0.639
185.00	SMCGO 89% <i>o</i> , 9% <i>g</i> , 2% <i>m</i>	2.085
0.00	GIP = 540'	0.000

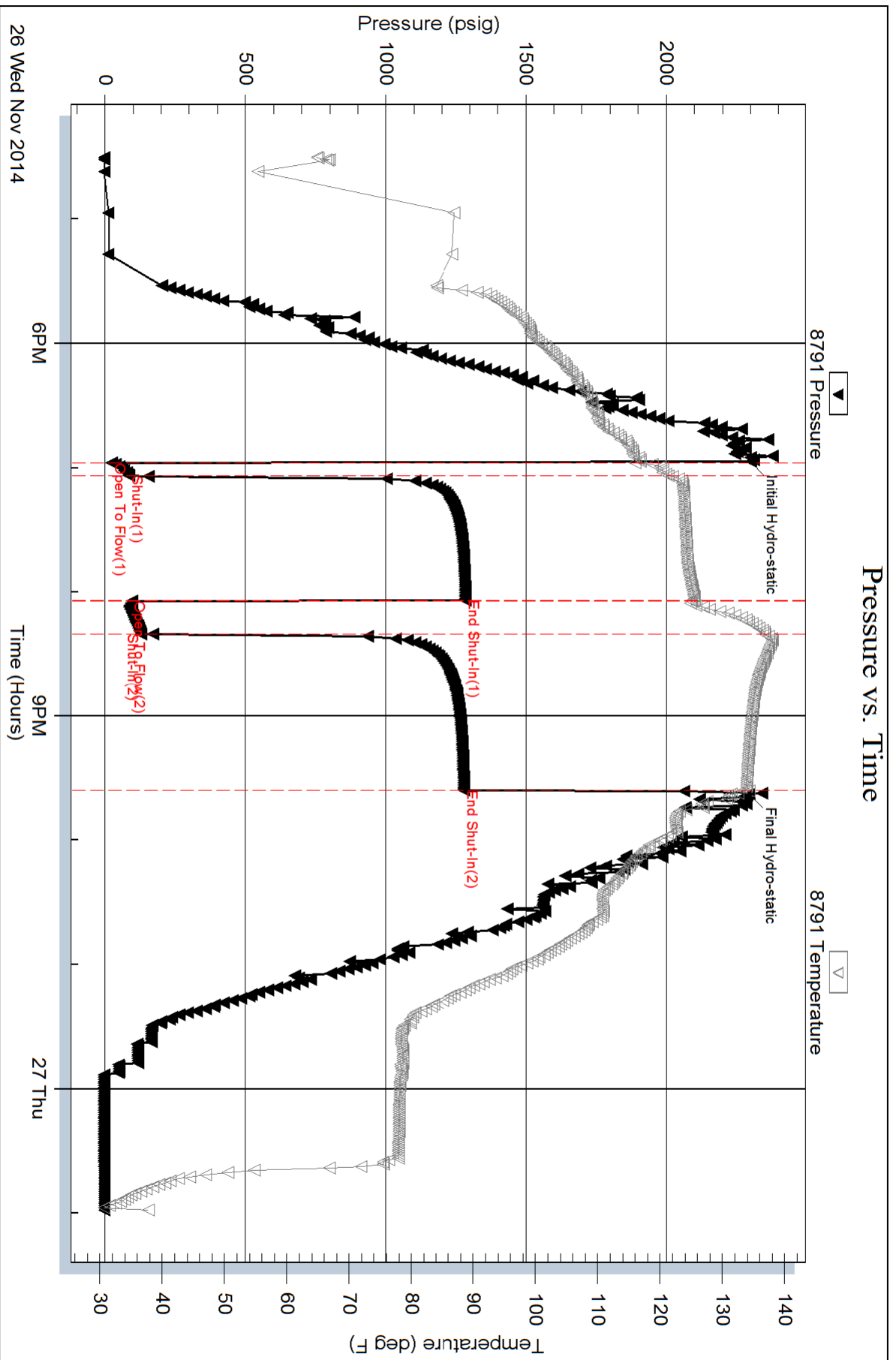
Total Length: 315.00 ft Total Volume: 2.724 bbl

Num Fluid Samples: 0 Num Gas Bombs: 0 Serial #:

Laboratory Name: Laboratory Location:

Recovery Comments: Gravity = 33.8 api @ 38 deg F Corrected Gravity = 36 api

Pressure vs. Time

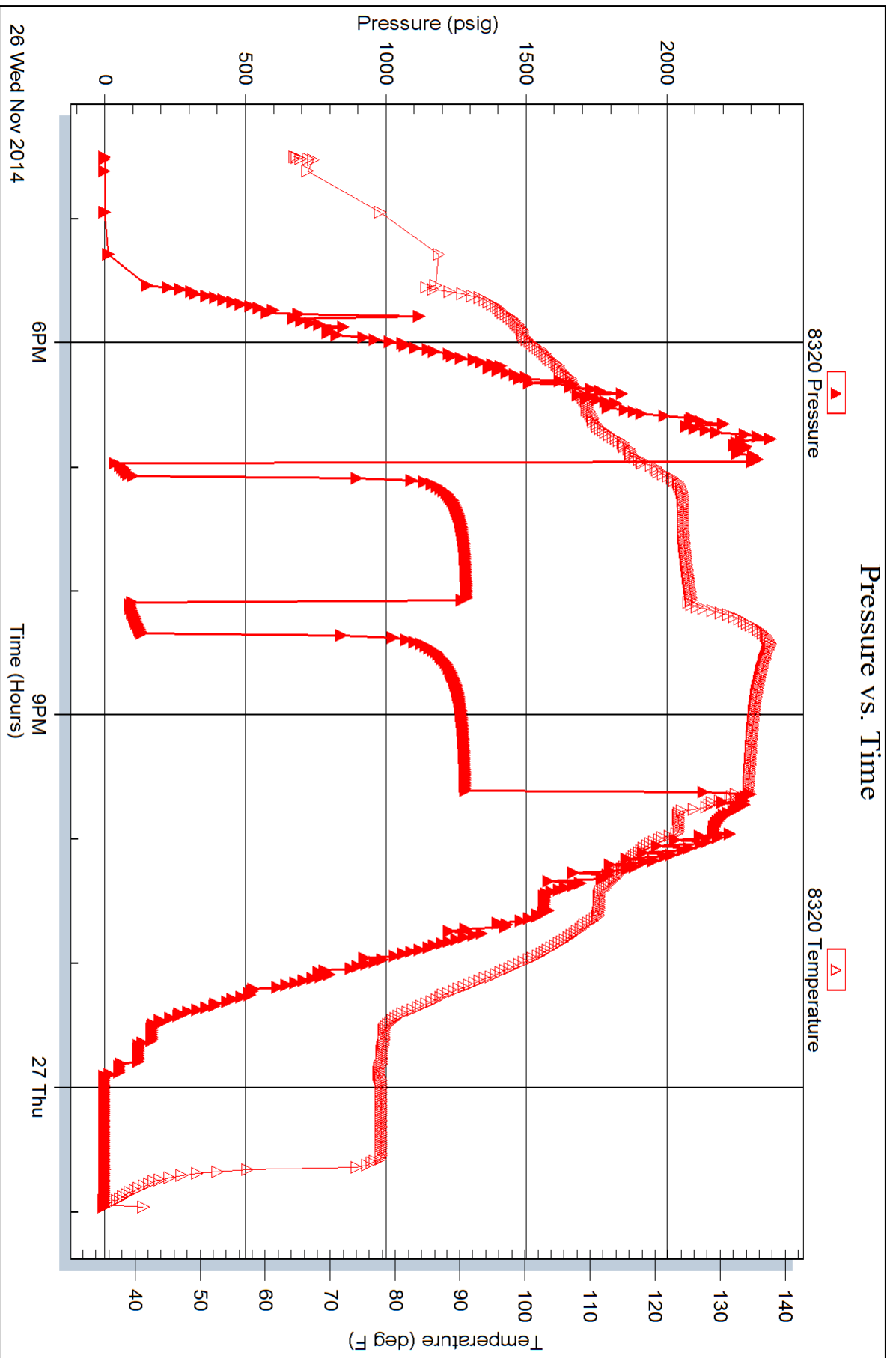


Serial #: 8320

Outside Samuel Gary Jr. & Associates, Inc.

Fisher Cattle #1-34

DST Test Number: 4



Serial #: 8366

Fluid

Samuel Gary Jr. & Associates, Inc.

Fisher Cattle #1-34

DST Test Number: 4

