



**TRILOBITE
TESTING, INC.**

DRILL STEM TEST REPORT

Samuel Gary Jr. & Associates, Inc.

34/3s/36w Rawlins KS

1515 Wynkoop STE 700
Denver, CO 80202

Fisher Cattle #1-34

Job Ticket: 60826

DST#: 6

ATTN: Dan Pritchard

Test Start: 2014.11.27 @ 23:20:00

GENERAL INFORMATION:

Formation: **Cherokee**

Deviated: No Whipstock: ft (KB)

Time Tool Opened: 03:01:15

Time Test Ended: 10:07:00

Test Type: Conventional Bottom Hole (Reset)

Tester: James Winder

Unit No: 57

Interval: 4646.00 ft (KB) To 4697.00 ft (KB) (TVD)

Reference Elevations: 3309.00 ft (KB)

Total Depth: 4697.00 ft (KB) (TVD)

3304.00 ft (CF)

Hole Diameter: 7.88 inches Hole Condition: Fair

KB to GR/CF: 5.00 ft

Serial #: 8791 Inside

Press@RunDepth: 112.52 psig @ 4647.00 ft (KB)

Capacity: 8000.00 psig

Start Date: 2014.11.27

End Date:

2014.11.28

Last Calib.:

2014.11.28

Start Time: 22:20:05

End Time:

09:07:00

Time On Btm:

2014.11.28 @ 02:01:00

Time Off Btm:

2014.11.28 @ 05:50:30

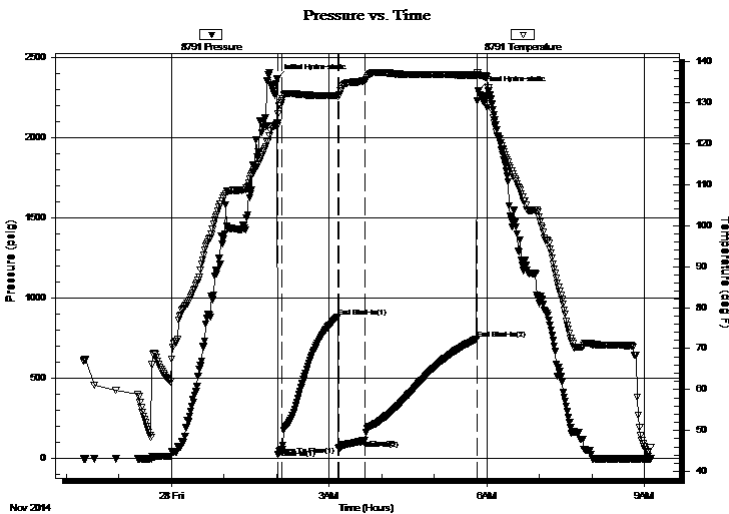
TEST COMMENT: 5 - IF: Blow built to 4"

60 - ISI: Surface blow back for 6 min., then dead

30 - FF: Blow built to BOB (11") at 19 1/2 min.

120 - FSI: Blow back built to 2"

PRESSURE SUMMARY



Time (Min.)	Pressure (psig)	Temp (deg F)	Annotation
0	2368.16	125.14	Initial Hydro-static
1	21.66	124.45	Open To Flow (1)
6	55.62	130.59	Shut-In(1)
69	884.39	131.80	End Shut-In(1)
70	63.58	131.52	Open To Flow (2)
101	112.52	135.55	Shut-In(2)
228	744.72	136.73	End Shut-In(2)
230	2297.39	136.81	Final Hydro-static

Recovery

Length (ft)	Description	Volume (bbl)
72.00	GOCM 65% m, 19% o, 16% g	0.35
57.00	SMCGO 54% o, 39% g, 7% m	0.28
125.00	SMCGO 82% m, 14% g, 4% m	1.23
6.00	CO 94% o, 5% g, 1% m	0.08
0.00	GIP = 160'	0.00

* Recovery from multiple tests

Gas Rates

Choke (inches)	Pressure (psig)	Gas Rate (Mcf/d)



**TRILOBITE
TESTING, INC**

DRILL STEM TEST REPORT

FLUID SUMMARY

Samuel Gary Jr. & Associates, Inc.

34/3s/36w Rawlins KS

1515 Wynkoop STE 700
Denver, CO 80202

Fisher Cattle #1-34

Job Ticket: 60826

DST#: 6

ATTN: Dan Pritchard

Test Start: 2014.11.27 @ 23:20:00

Mud and Cushion Information

Mud Type: Gel Chem
Mud Weight: 10.00 lb/gal
Viscosity: 68.00 sec/qt
Water Loss: 8.79 in³
Resistivity: ohm.m
Salinity: 700.00 ppm
Filter Cake: 1.00 inches

Cushion Type:
Cushion Length: ft
Cushion Volume: bbl
Gas Cushion Type:
Gas Cushion Pressure: psig

Oil API: 27.4 deg API
Water Salinity: ppm

Recovery Information

Recovery Table

Length ft	Description	Volume bbl
72.00	GOCM 65% <i>m</i> , 19% <i>o</i> , 16% <i>g</i>	0.354
57.00	SMCGO 54% <i>o</i> , 39% <i>g</i> , 7% <i>m</i>	0.280
125.00	SMCGO 82% <i>m</i> , 14% <i>g</i> , 4% <i>m</i>	1.234
6.00	CO 94% <i>o</i> , 5% <i>g</i> , 1% <i>m</i>	0.084
0.00	GIP = 160'	0.000

Total Length: 260.00 ft Total Volume: 1.952 bbl

Num Fluid Samples: 0 Num Gas Bombs: 0 Serial #:

Laboratory Name: Laboratory Location:

Recovery Comments: Gravity = 26 api @ 46 deg F Corrected Gravity = 27.4 api

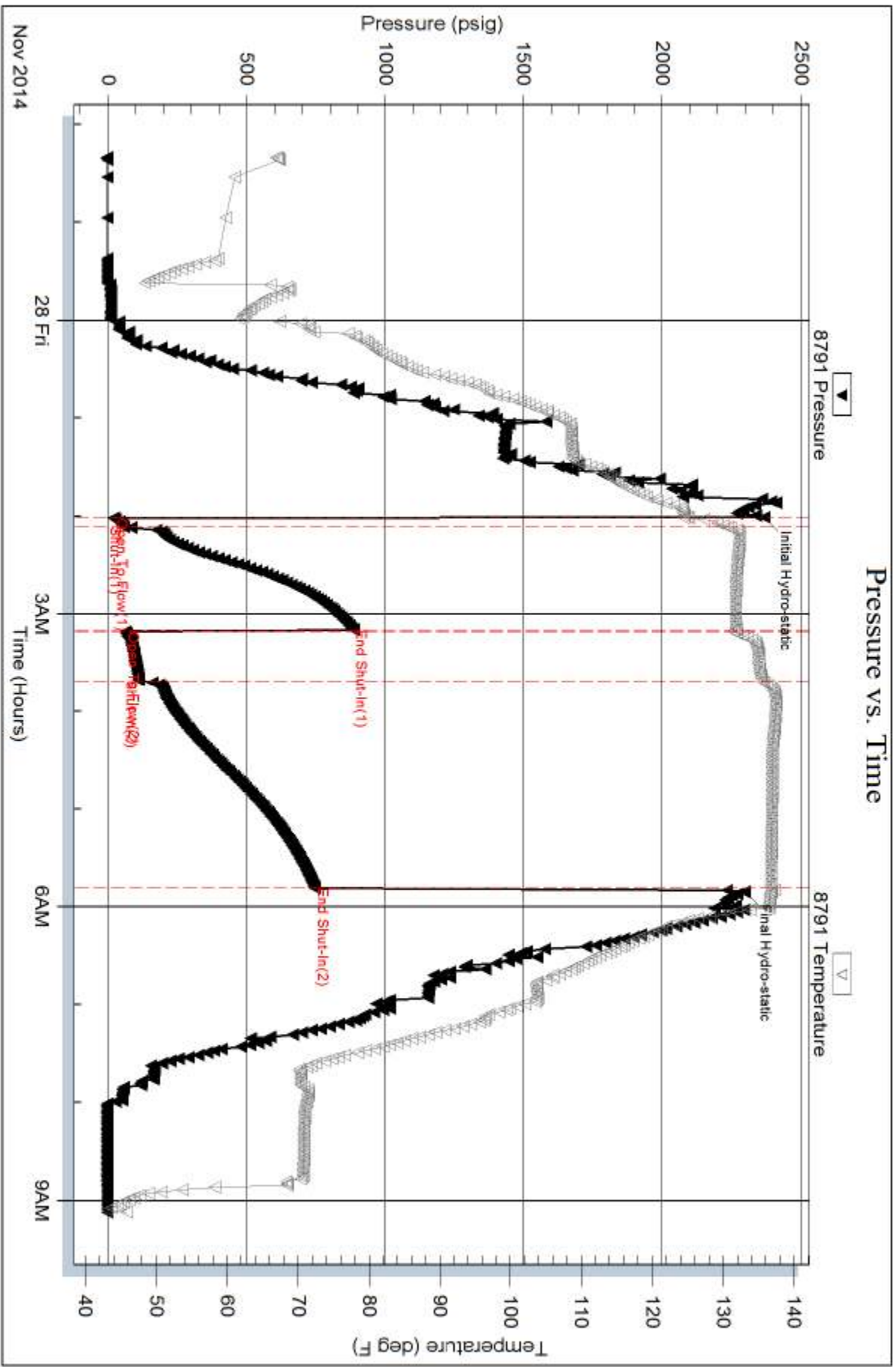
Serial #: 8791

Inside

Samuel Gary Jr. & Associates, Inc.

Fisher Cattle #1-34

DST Test Number: 6



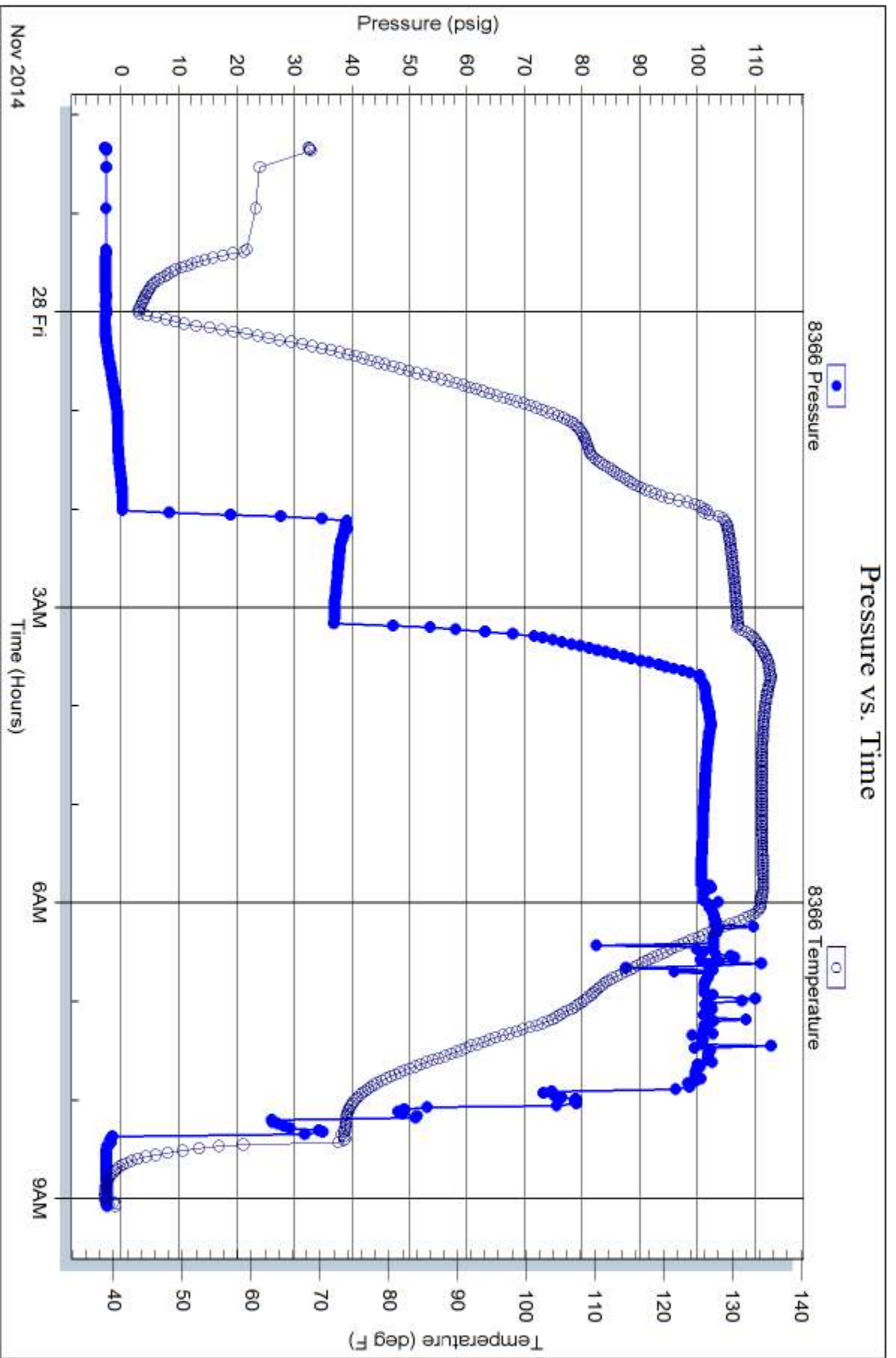
Serial #: 8366

Fluid

Samuel Gary Jr. & Associates, Inc.

Fisher Cattle #1-34

DST Test Number: 6



Tribble Testing, Inc

Ref. No: 60826

Printed: 2014.11.28 @ 09:54:25