



**TRILOBITE TESTING, INC.**

# DRILL STEM TEST REPORT

Berexco LLC  
 2020 N. Bramblewood  
 Wichita KS, 67206 1094  
 ATTN: Bryan Bynog

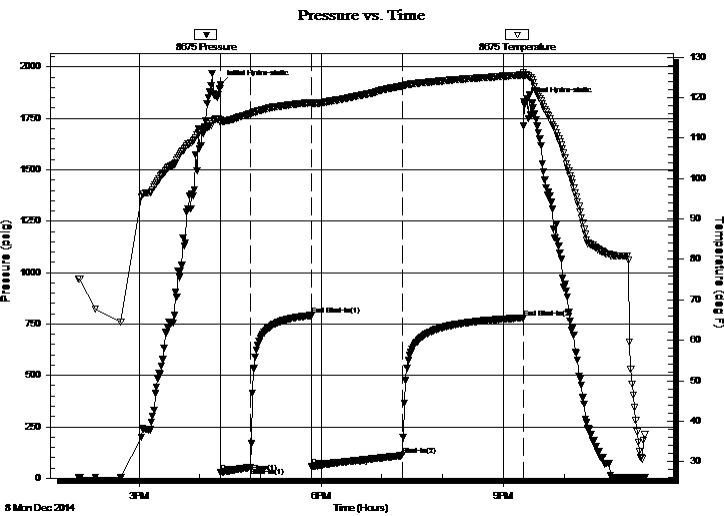
**4-1s-36w Rawlins Co, KS**  
**Moser 5-4**  
 Job Ticket: 58511      **DST#: 1**  
 Test Start: 2014.12.08 @ 14:00:00

## GENERAL INFORMATION:

Formation: **Oread**  
 Deviated: No Whipstock: ft (KB)  
 Time Tool Opened: 16:20:30  
 Time Test Ended: 23:19:45  
 Interval: **3880.00 ft (KB) To 3950.00 ft (KB) (TVD)**  
 Total Depth: 3950.00 ft (KB) (TVD)  
 Hole Diameter: 7.88 inches Hole Condition: Poor  
 Test Type: Conventional Bottom Hole (Initial)  
 Tester: Jace McKinney  
 Unit No: 75  
 Reference Elevations: 3066.00 ft (KB)  
 3055.00 ft (CF)  
 KB to GR/CF: 11.00 ft

**Serial #: 8675 Inside**  
 Press @ Run Depth: 109.65 psig @ 3899.00 ft (KB) Capacity: 8000.00 psig  
 Start Date: 2014.12.08 End Date: 2014.12.08 Last Calib.: 2014.12.08  
 Start Time: 14:00:15 End Time: 23:19:45 Time On Btm: 2014.12.08 @ 16:20:15  
 Time Off Btm: 2014.12.08 @ 21:20:30

**TEST COMMENT:** Built to 2 3/4" blow  
 Bled off for 3 min, No return blow  
 Built to 1 1/4" blow  
 Bled off for 3 min, No return blow



## PRESSURE SUMMARY

Time (Min.)	Pressure (psig)	Temp (deg F)	Annotation
0	1912.48	114.59	Initial Hydro-static
1	25.91	113.84	Open To Flow (1)
30	52.16	116.01	Shut-In(1)
90	791.57	118.81	End Shut-In(1)
91	55.51	118.37	Open To Flow (2)
180	109.65	122.86	Shut-In(2)
300	779.44	125.62	End Shut-In(2)
301	1830.71	125.73	Final Hydro-static

## Recovery

Length (ft)	Description	Volume (bbl)
116.00	100% Mud w with oil scum	0.57
68.00	ocm 10%O 90%M	0.33

## Gas Rates

	Choke (inches)	Pressure (psig)	Gas Rate (Mcf/d)



**TRILOBITE  
TESTING, INC.**

# DRILL STEM TEST REPORT

## FLUID SUMMARY

Berexco LLC  
2020 N. Bramblewood  
Wichita KS, 67206 1094  
ATTN: Bryan Bynog

**4-1s-36w Rawlins Co, KS**  
**Moser 5-4**  
Job Ticket: 58511      **DST#: 1**  
Test Start: 2014.12.08 @ 14:00:00

### Mud and Cushion Information

Mud Type: Gel Chem	Cushion Type:	Oil API:	deg API
Mud Weight: 9.00 lb/gal	Cushion Length: ft	Water Salinity:	ppm
Viscosity: 48.00 sec/qt	Cushion Volume: bbl		
Water Loss: 6.80 in <sup>3</sup>	Gas Cushion Type:		
Resistivity: ohm.m	Gas Cushion Pressure: psig		
Salinity: 500.00 ppm			
Filter Cake: 2.00 inches			

### Recovery Information

Recovery Table

Length ft	Description	Volume bbl
116.00	100% Mud with oil scum	0.570
68.00	ocm 10%O 90%M	0.334

Total Length: 184.00 ft      Total Volume: 0.904 bbl  
 Num Fluid Samples: 0      Num Gas Bombs: 0      Serial #:  
 Laboratory Name:      Laboratory Location:  
 Recovery Comments:

