



DRILL STEM TEST REPORT

Prepared For: **Gore Oil Company**

PO Box 2757
Wichita, KS 67202

ATTN: Chuck Schmultz

Kingsley #5

17-14s-20w Ellis,KS

Start Date: 2014.10.24 @ 16:47:00

End Date: 2014.10.25 @ 02:52:30

Job Ticket #: 60716 DST #: 1

Trilobite Testing, Inc
1515 Commerce Parkway Hays, KS 67601
ph: 785-625-4778 fax: 785-625-5620

Printed: 2014.10.31 @ 08:31:37



TRILOBITE TESTING, INC

DRILL STEM TEST REPORT

Gore Oil Company

17-14s-20w Ellis,KS

PO Box 2757
Wichita, KS 67202

Kingsley #5

Job Ticket: 60716

DST#: 1

ATTN: Chuck Schmultz

Test Start: 2014.10.24 @ 16:47:00

GENERAL INFORMATION:

Formation: **Oread**

Deviated: No Whipstock: ft (KB)

Time Tool Opened: 21:28:30

Time Test Ended: 02:52:30

Test Type: Conventional Bottom Hole (Initial)

Tester: Phillip Gage

Unit No: 70

Interval: 3345.00 ft (KB) To 3430.00 ft (KB) (TVD)

Reference Elevations: 2170.00 ft (KB)

Total Depth: 3430.00 ft (KB) (TVD)

2162.00 ft (CF)

Hole Diameter: 7.88 inches Hole Condition: Fair

KB to GR/CF: 8.00 ft

Serial #: 8700 Outside

Press@RunDepth: 91.19 psig @ 3346.00 ft (KB)

Capacity: 8000.00 psig

Start Date: 2014.10.24

End Date:

2014.10.25

Last Calib.: 2014.10.25

Start Time: 16:47:05

End Time:

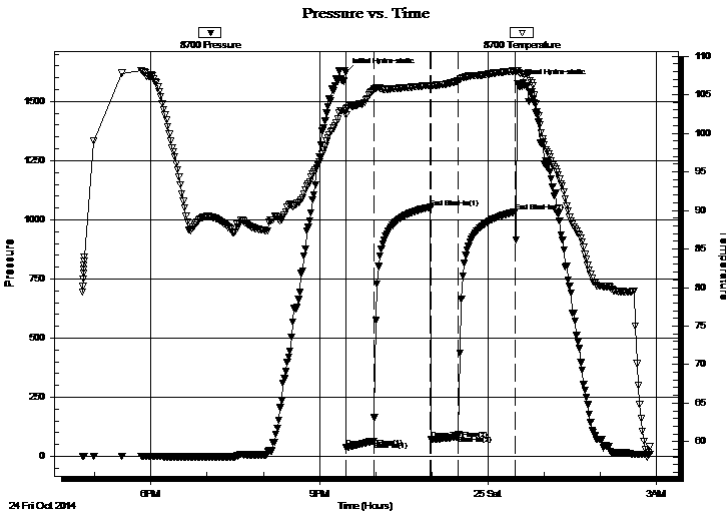
02:52:30

Time On Btm: 2014.10.24 @ 21:28:00

Time Off Btm: 2014.10.25 @ 00:31:30

TEST COMMENT: 30-IF-Built to 3 1/4"
60-ISI-No Return
30-FF-Built to 1 1/4"
60-FSI-No Return

PRESSURE SUMMARY



Time (Min.)	Pressure (psig)	Temp (deg F)	Annotation
0	1623.18	103.12	Initial Hydro-static
1	38.73	102.42	Open To Flow (1)
30	64.98	105.64	Shut-In(1)
90	1052.57	106.18	End Shut-In(1)
91	72.42	105.97	Open To Flow (2)
121	91.19	106.86	Shut-In(2)
181	1032.70	108.08	End Shut-In(2)
184	1574.28	108.16	Final Hydro-static

Recovery

Length (ft)	Description	Volume (bbl)
141.00	M, w ith oil spots 100% m	0.88

Gas Rates

Choke (inches)	Pressure (psig)	Gas Rate (Mcf/d)



**TRILOBITE
TESTING, INC**

DRILL STEM TEST REPORT

Gore Oil Company

17-14s-20w Ellis, KS

PO Box 2757
Wichita, KS 67202

Kingsley #5

Job Ticket: 60716

DST#: 1

ATTN: Chuck Schmultz

Test Start: 2014.10.24 @ 16:47:00

GENERAL INFORMATION:

Formation: **Oread**

Deviated: No Whipstock: ft (KB)

Time Tool Opened: 21:28:30

Time Test Ended: 02:52:30

Test Type: Conventional Bottom Hole (Initial)

Tester: Phillip Gage

Unit No: 70

Interval: 3345.00 ft (KB) To 3430.00 ft (KB) (TVD)

Reference Elevations: 2170.00 ft (KB)

Total Depth: 3430.00 ft (KB) (TVD)

2162.00 ft (CF)

Hole Diameter: 7.88 inches Hole Condition: Fair

KB to GR/CF: 8.00 ft

Serial #: 8018 Inside

Press@RunDepth: psig @ 3346.00 ft (KB)

Capacity: 8000.00 psig

Start Date: 2014.10.24 End Date: 2014.10.25

Last Calib.: 2014.10.25

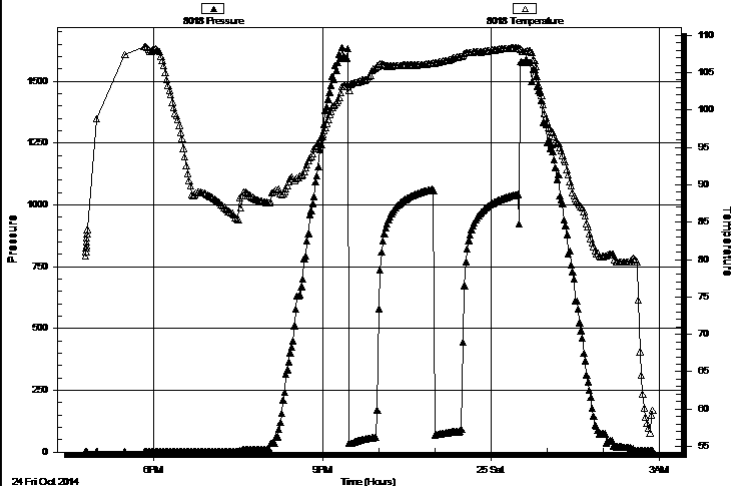
Start Time: 16:47:05 End Time: 02:52:30

Time On Btm:

Time Off Btm:

TEST COMMENT: 30-IF-Built to 3 1/4"
60-ISI-No Return
30-FF-Built to 1 1/4"
60-FSI-No Return

Pressure vs. Time



PRESSURE SUMMARY

Time (Min.)	Pressure (psig)	Temp (deg F)	Annotation

Recovery

Length (ft)	Description	Volume (bbl)
141.00	M, w ith oil spots 100% m	0.88

Gas Rates

	Choke (inches)	Pressure (psig)	Gas Rate (Mcf/d)



**TRILOBITE
TESTING, INC**

DRILL STEM TEST REPORT

TOOL DIAGRAM

Gore Oil Company

17-14s-20w Ellis,KS

PO Box 2757
Wichita, KS 67202

Kingsley #5

Job Ticket: 60716

DST#: 1

ATTN: Chuck Schmultz

Test Start: 2014.10.24 @ 16:47:00

Tool Information

Drill Pipe:	Length: 3212.00 ft	Diameter: 3.80 inches	Volume: 45.06 bbl	Tool Weight: 2500.00 lb
Heavy Wt. Pipe:	Length: 0.00 ft	Diameter: 2.75 inches	Volume: 0.00 bbl	Weight set on Packer: 25000.00 lb
Drill Collar:	Length: 120.00 ft	Diameter: 2.25 inches	Volume: 0.59 bbl	Weight to Pull Loose: 60000.00 lb
			<u>Total Volume: 45.65 bbl</u>	Tool Chased 0.00 ft
Drill Pipe Above KB:	15.00 ft			String Weight: Initial 46000.00 lb
Depth to Top Packer:	3345.00 ft			Final 49000.00 lb
Depth to Bottom Packer:	ft			
Interval between Packers:	85.00 ft			
Tool Length:	113.00 ft			
Number of Packers:	2	Diameter: 6.75 inches		

Tool Comments:

Tool Description

Tool Description	Length (ft)	Serial No.	Position	Depth (ft)	Accum. Lengths
Change Over Sub	1.00			3318.00	
Shut In Tool	5.00			3323.00	
Hydraulic tool	5.00			3328.00	
Jars	5.00			3333.00	
Safety Joint	2.00			3335.00	
Packer	5.00			3340.00	28.00 Bottom Of Top Packer
Packer	5.00			3345.00	
Stubb	1.00			3346.00	
Recorder	0.00	8018	Inside	3346.00	
Recorder	0.00	8700	Outside	3346.00	
Perforations	16.00			3362.00	
Change Over Sub	1.00			3363.00	
Drill Pipe	63.00			3426.00	
Change Over Sub	1.00			3427.00	
Bullnose	3.00			3430.00	85.00 Bottom Packers & Anchor

Total Tool Length: 113.00



**TRILOBITE
TESTING, INC**

DRILL STEM TEST REPORT

FLUID SUMMARY

Gore Oil Company

17-14s-20w Ellis,KS

PO Box 2757
Wichita, KS 67202

Kingsley #5

Job Ticket: 60716

DST#: 1

ATTN: Chuck Schmultz

Test Start: 2014.10.24 @ 16:47:00

Mud and Cushion Information

Mud Type: Gel Chem

Cushion Type:

Oil API:

deg API

Mud Weight: 9.00 lb/gal

Cushion Length:

ft

Water Salinity:

ppm

Viscosity: 50.00 sec/qt

Cushion Volume:

bbbl

Water Loss: 9.67 in³

Gas Cushion Type:

Resistivity: ohm.m

Gas Cushion Pressure:

psig

Salinity: 2500.00 ppm

Filter Cake: 2.00 inches

Recovery Information

Recovery Table

Length ft	Description	Volume bbl
141.00	M, w ith oil spots 100% m	0.885

Total Length: 141.00 ft Total Volume: 0.885 bbl

Num Fluid Samples: 0

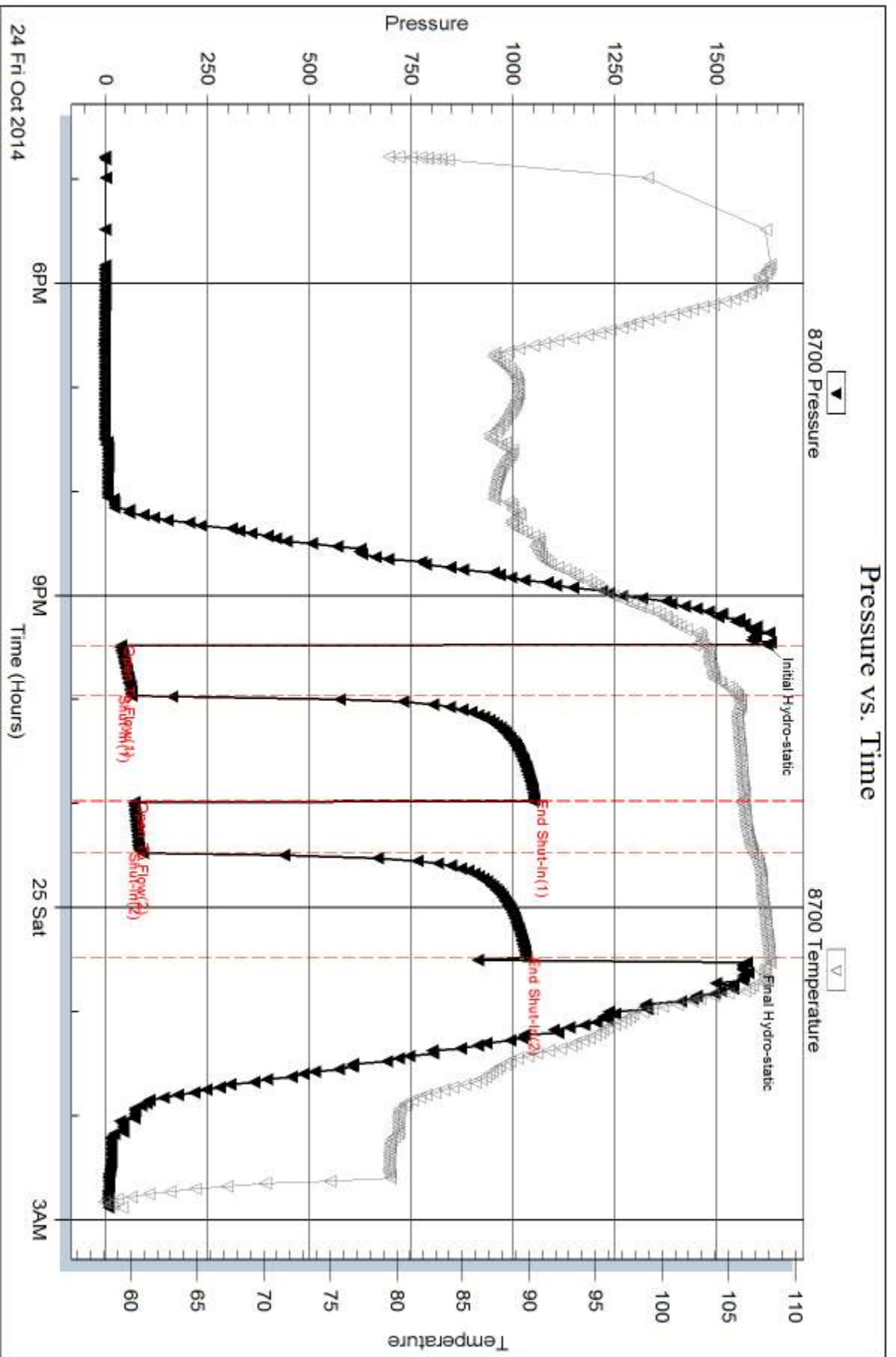
Num Gas Bombs: 0

Serial #:

Laboratory Name:

Laboratory Location:

Recovery Comments:



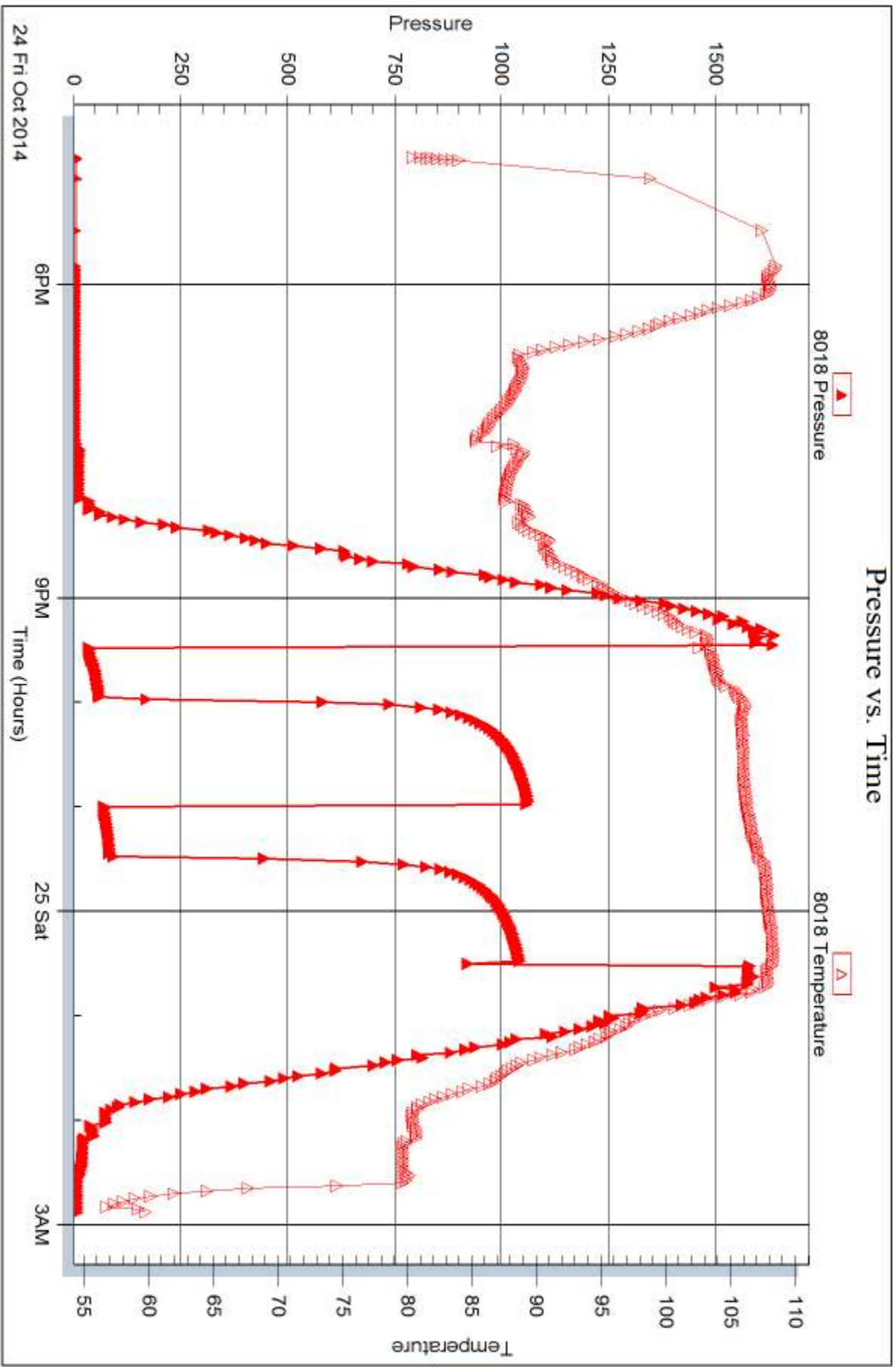
Serial #: 8018

Inside

Gore Oil Company

Kingsley #5

DST Test Number: 1





DRILL STEM TEST REPORT

Prepared For: **Gore Oil Company**

PO Box 2757
Wichita, KS 67202

ATTN: Chuck Schmultz

Kingsley #5

17-14s-20w Ellis,KS

Start Date: 2014.10.25 @ 13:42:00

End Date: 2014.10.25 @ 23:31:00

Job Ticket #: 60717 DST #: 2

Trilobite Testing, Inc
1515 Commerce Parkway Hays, KS 67601
ph: 785-625-4778 fax: 785-625-5620

Printed: 2014.10.31 @ 08:31:15



TRILOBITE TESTING, INC

DRILL STEM TEST REPORT

Gore Oil Company

17-14s-20w Ellis,KS

PO Box 2757
Wichita, KS 67202

Kingsley #5

Job Ticket: 60717

DST#: 2

ATTN: Chuck Schmultz

Test Start: 2014.10.25 @ 13:42:00

GENERAL INFORMATION:

Formation: **LKC "A - C"**
 Deviated: No Whipstock: ft (KB)
 Time Tool Opened: 16:59:30
 Time Test Ended: 23:31:00
 Interval: **3447.00 ft (KB) To 3502.00 ft (KB) (TVD)**
 Total Depth: 3502.00 ft (KB) (TVD)
 Hole Diameter: 7.88 inches Hole Condition: Fair
 Test Type: Conventional Bottom Hole (Reset)
 Tester: Phillip Gage
 Unit No: 70
 Reference Elevations: 2170.00 ft (KB)
 2162.00 ft (CF)
 KB to GR/CF: 8.00 ft

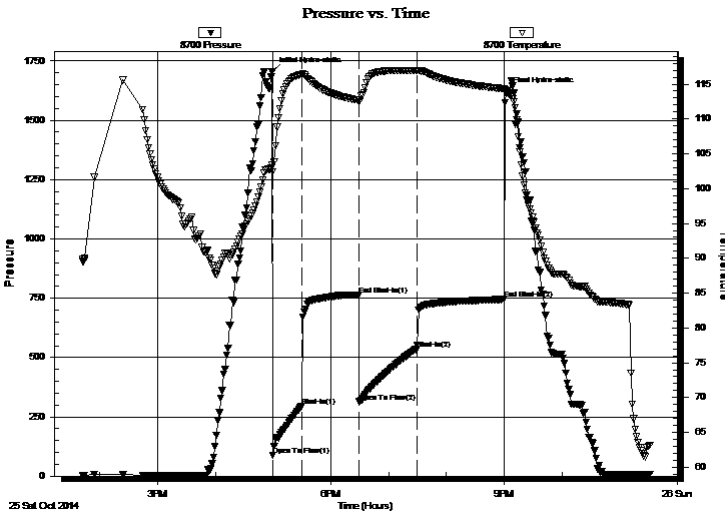
Serial #: 8700

Outside

Press@RunDepth: 536.70 psig @ 3448.00 ft (KB) Capacity: 8000.00 psig
 Start Date: 2014.10.25 End Date: 2014.10.25 Last Calib.: 2014.10.25
 Start Time: 13:42:05 End Time: 23:31:00 Time On Btm: 2014.10.25 @ 16:59:00
 Time Off Btm: 2014.10.25 @ 21:01:30

TEST COMMENT: 30-IF-BOB in 5 mins.
 60-ISI-No Return
 60-FF-BOB in 7 mins.
 90-FSI-No Return

PRESSURE SUMMARY



Time (Min.)	Pressure (psig)	Temp (deg F)	Annotation
0	1706.78	103.38	Initial Hydro-static
1	86.88	102.44	Open To Flow (1)
31	296.04	116.41	Shut-In(1)
90	764.88	112.68	End Shut-In(1)
91	313.53	112.51	Open To Flow (2)
150	536.70	116.95	Shut-In(2)
241	745.58	114.33	End Shut-In(2)
243	1623.11	114.00	Final Hydro-static

Recovery

Length (ft)	Description	Volume (bbl)
819.00	SMCW, w ith oil spots, 10%m, 90%w	10.40
315.00	MCW, w ith oil spots, 30%m, 70%w	4.42

* Recovery from multiple tests

Gas Rates

	Choke (inches)	Pressure (psig)	Gas Rate (Mcf/d)



TRILOBITE TESTING, INC

DRILL STEM TEST REPORT

Gore Oil Company

17-14s-20w Ellis,KS

PO Box 2757
Wichita, KS 67202

Kingsley #5

Job Ticket: 60717

DST#: 2

ATTN: Chuck Schmultz

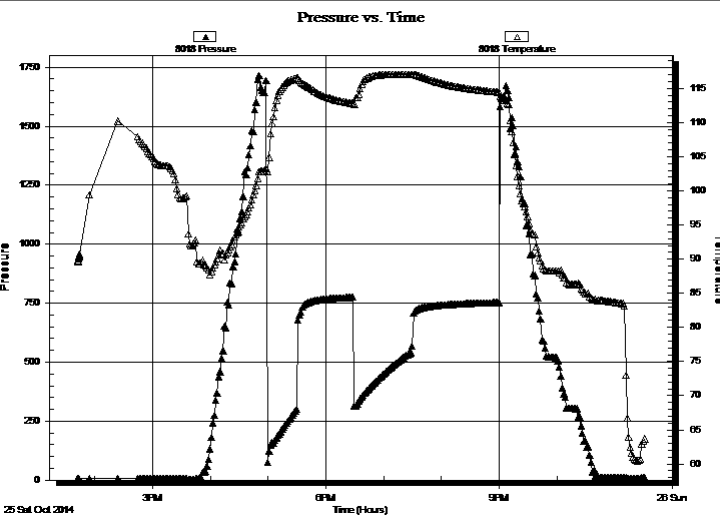
Test Start: 2014.10.25 @ 13:42:00

GENERAL INFORMATION:

Formation: **LKC "A - C"**
 Deviated: No Whipstock: ft (KB) Test Type: Conventional Bottom Hole (Reset)
 Time Tool Opened: 16:59:30 Tester: Phillip Gage
 Time Test Ended: 23:31:00 Unit No: 70
Interval: 3447.00 ft (KB) To 3502.00 ft (KB) (TVD) Reference Elevations: 2170.00 ft (KB)
 Total Depth: 3502.00 ft (KB) (TVD) 2162.00 ft (CF)
 Hole Diameter: 7.88 inches Hole Condition: Fair KB to GR/CF: 8.00 ft

Serial #: 8018 Inside
 Press@RunDepth: psig @ 3448.00 ft (KB) Capacity: 8000.00 psig
 Start Date: 2014.10.25 End Date: 2014.10.25 Last Calib.: 2014.10.25
 Start Time: 13:42:05 End Time: 23:31:00 Time On Btm:
 Time Off Btm:

TEST COMMENT: 30-IF-BOB in 5 mins.
 60-ISI-No Return
 60-FF-BOB in 7 mins.
 90-FSI-No Return



PRESSURE SUMMARY			
Time (Min.)	Pressure (psig)	Temp (deg F)	Annotation

Recovery		
Length (ft)	Description	Volume (bbl)
819.00	SMCW, w ith oil spots, 10% m, 90% w	10.40
315.00	MCW, w ith oil spots, 30% m, 70% w	4.42

Gas Rates			
	Choke (inches)	Pressure (psig)	Gas Rate (Mcf/d)

* Recovery from multiple tests



**TRILOBITE
TESTING, INC**

DRILL STEM TEST REPORT

TOOL DIAGRAM

Gore Oil Company

17-14s-20w Ellis,KS

PO Box 2757
Wichita, KS 67202

Kingsley #5

Job Ticket: 60717

DST#: 2

ATTN: Chuck Schmultz

Test Start: 2014.10.25 @ 13:42:00

Tool Information

Drill Pipe:	Length: 3305.00 ft	Diameter: 3.80 inches	Volume: 46.36 bbl	Tool Weight: 2500.00 lb
Heavy Wt. Pipe:	Length: 0.00 ft	Diameter: 2.75 inches	Volume: 0.00 bbl	Weight set on Packer: 25000.00 lb
Drill Collar:	Length: 120.00 ft	Diameter: 2.25 inches	Volume: 0.59 bbl	Weight to Pull Loose: 54000.00 lb
			<u>Total Volume: 46.95 bbl</u>	Tool Chased 0.00 ft
Drill Pipe Above KB:	6.00 ft			String Weight: Initial 45000.00 lb
Depth to Top Packer:	3447.00 ft			Final 50000.00 lb
Depth to Bottom Packer:	ft			
Interval between Packers:	55.00 ft			
Tool Length:	83.00 ft			
Number of Packers:	2	Diameter: 6.75 inches		

Tool Comments:

Tool Description

Tool Description	Length (ft)	Serial No.	Position	Depth (ft)	Accum. Lengths
Change Over Sub	1.00			3420.00	
Shut In Tool	5.00			3425.00	
Hydraulic tool	5.00			3430.00	
Jars	5.00			3435.00	
Safety Joint	2.00			3437.00	
Packer	5.00			3442.00	28.00 Bottom Of Top Packer
Packer	5.00			3447.00	
Stubb	1.00			3448.00	
Recorder	0.00	8018	Inside	3448.00	
Recorder	0.00	8700	Outside	3448.00	
Perforations	18.00			3466.00	
Change Over Sub	1.00			3467.00	
Drill Pipe	31.00			3498.00	
Change Over Sub	1.00			3499.00	
Bullnose	3.00			3502.00	55.00 Bottom Packers & Anchor

Total Tool Length: 83.00



**TRILOBITE
TESTING, INC**

DRILL STEM TEST REPORT

FLUID SUMMARY

Gore Oil Company

17-14s-20w Ellis,KS

PO Box 2757
Wichita, KS 67202

Kingsley #5

Job Ticket: 60717

DST#: 2

ATTN: Chuck Schmultz

Test Start: 2014.10.25 @ 13:42:00

Mud and Cushion Information

Mud Type: Gel Chem

Cushion Type:

Oil API:

deg API

Mud Weight: 9.00 lb/gal

Cushion Length:

ft

Water Salinity:

57000 ppm

Viscosity: 50.00 sec/qt

Cushion Volume:

bbbl

Water Loss: 9.18 in³

Gas Cushion Type:

Resistivity: ohm.m

Gas Cushion Pressure:

psig

Salinity: 2500.00 ppm

Filter Cake: 2.00 inches

Recovery Information

Recovery Table

Length ft	Description	Volume bbl
819.00	SMCW, with oil spots, 10%m, 90%w	10.395
315.00	MCW, with oil spots, 30%m, 70%w	4.419

Total Length: 1134.00 ft Total Volume: 14.814 bbl

Num Fluid Samples: 0

Num Gas Bombs: 0

Serial #:

Laboratory Name:

Laboratory Location:

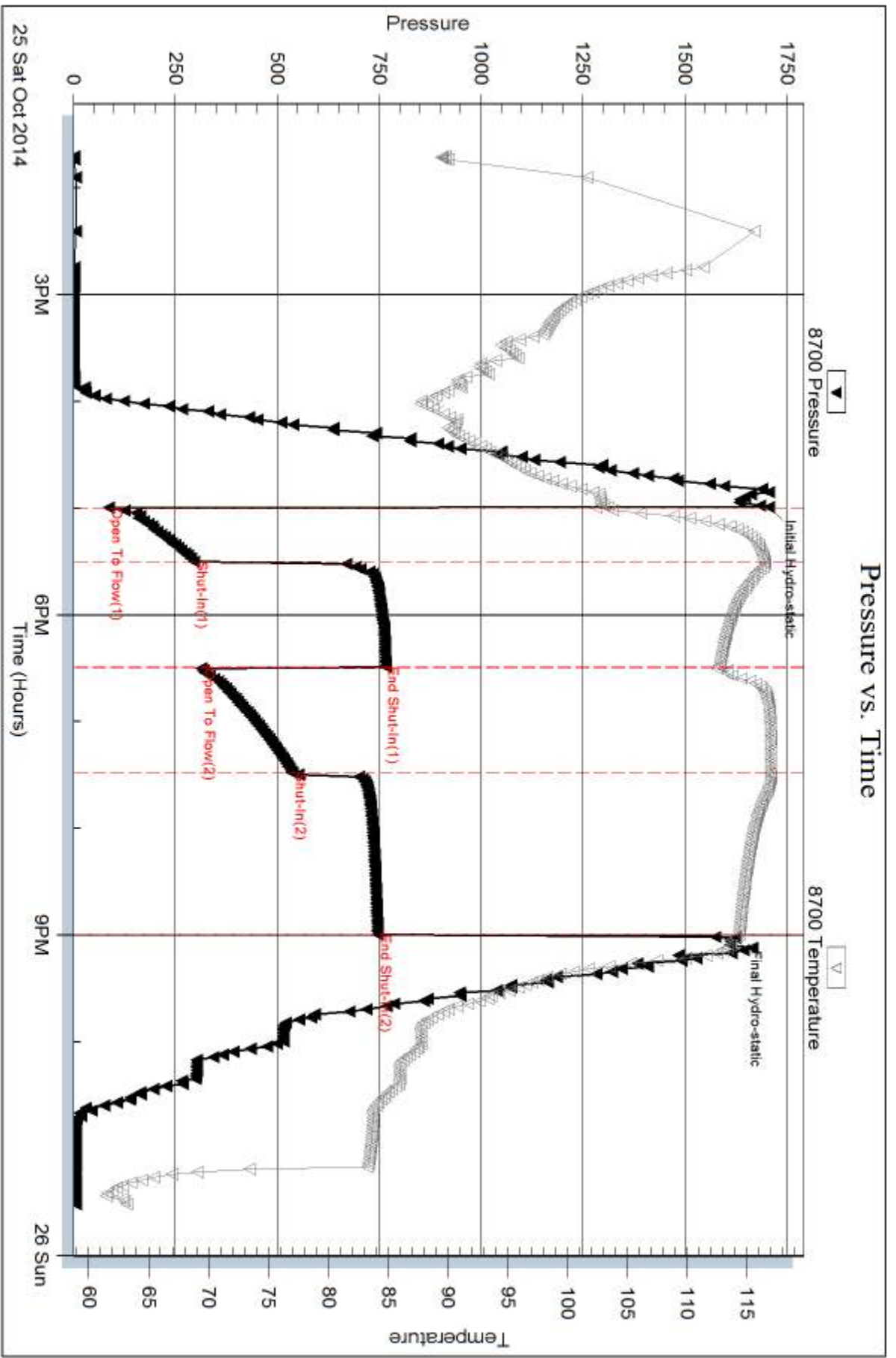
Recovery Comments: .17 @ 61 degrees = 57,000 Salinity

Serial #: 8700

Outside Gore Oil Company

Kingsley #5

DST Test Number: 2



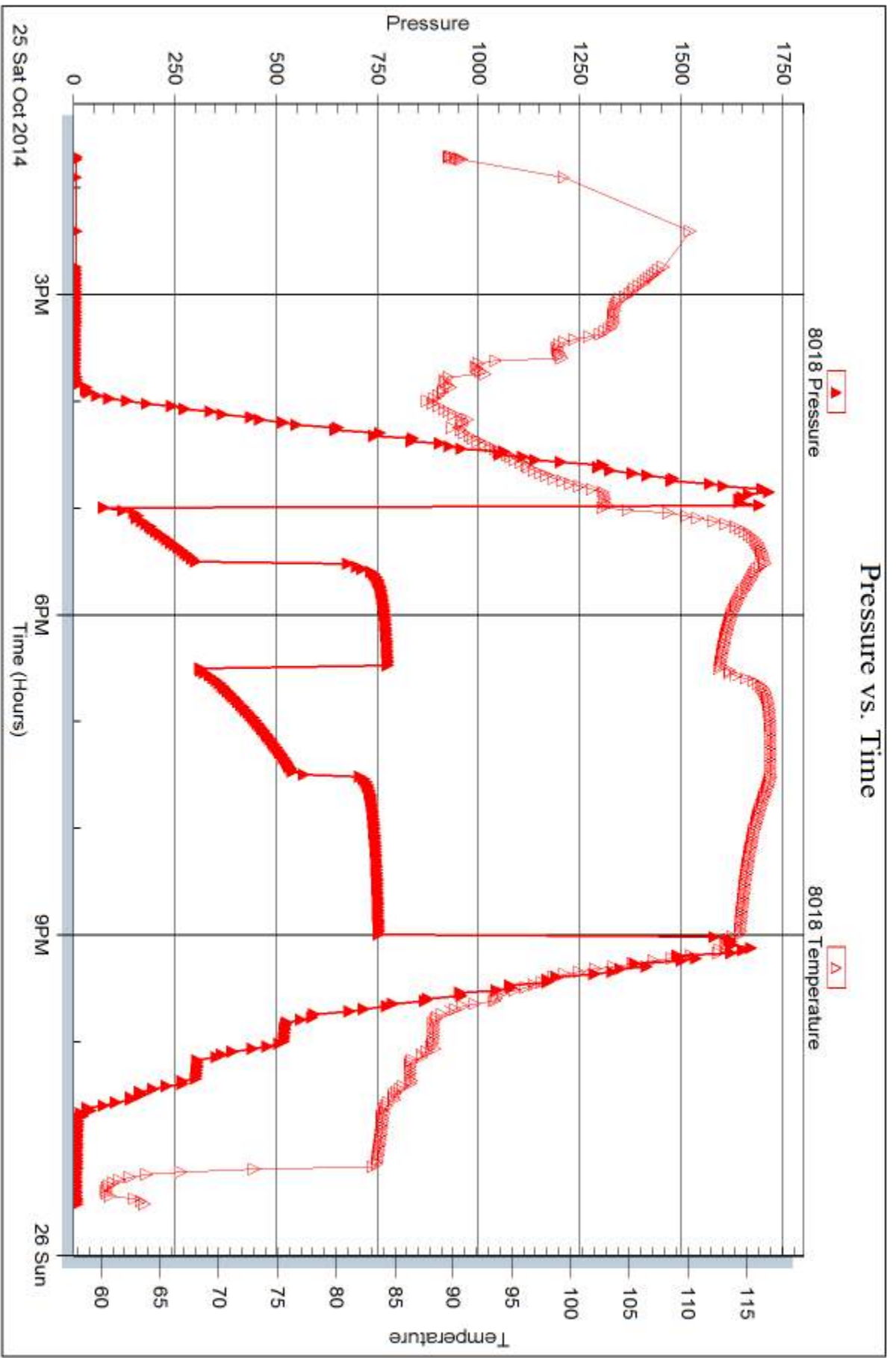
Serial #: 8018

Inside

Gore Oil Company

Kingsley #5

DST Test Number: 2



Trilobite Testing, Inc

Ref. No: 60717

Printed: 2014, 10, 31 @ 08:31:16



DRILL STEM TEST REPORT

Prepared For: **Gore Oil Company**

PO Box 2757
Wichita, KS 67202

ATTN: Chuck Schmultz

Kingsley #5

17-14s-20w Ellis,KS

Start Date: 2014.10.26 @ 16:08:00

End Date: 2014.10.27 @ 02:19:00

Job Ticket #: 60718 DST #: 3

Trilobite Testing, Inc
1515 Commerce Parkway Hays, KS 67601
ph: 785-625-4778 fax: 785-625-5620

Printed: 2014.10.31 @ 08:30:52

Gore Oil Company
17-14s-20w Ellis,KS
Kingsley #5
DST # 3
LKC "H - J"
2014.10.26



TRILOBITE TESTING, INC

DRILL STEM TEST REPORT

Gore Oil Company

17-14s-20w Ellis,KS

PO Box 2757
Wichita, KS 67202

Kingsley #5

Job Ticket: 60718

DST#: 3

ATTN: Chuck Schmultz

Test Start: 2014.10.26 @ 16:08:00

GENERAL INFORMATION:

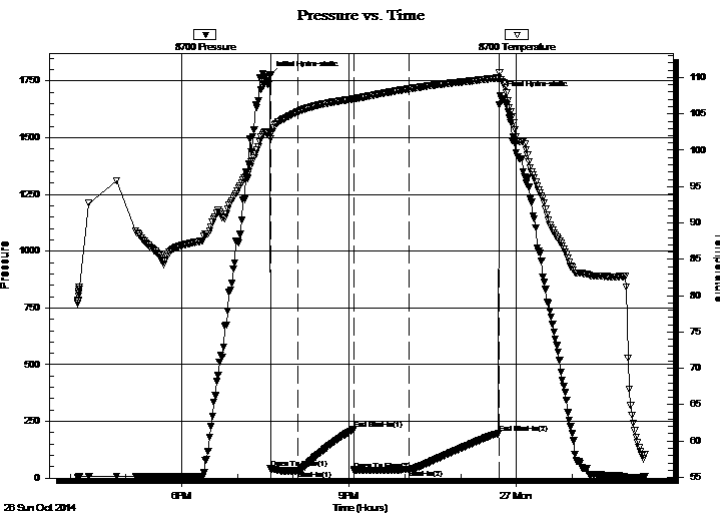
Formation: **LKC "H - J"**
 Deviated: No Whipstock: ft (KB)
 Time Tool Opened: 19:35:30
 Time Test Ended: 02:19:00
 Interval: **3575.00 ft (KB) To 3658.00 ft (KB) (TVD)**
 Total Depth: 3658.00 ft (KB) (TVD)
 Hole Diameter: 7.88 inches Hole Condition: Fair
 Test Type: Conventional Bottom Hole (Reset)
 Tester: Phillip Gage
 Unit No: 70
 Reference Elevations: 2170.00 ft (KB)
 2162.00 ft (CF)
 KB to GR/CF: 8.00 ft

Serial #: 8700

Outside

Press@RunDepth: 37.97 psig @ 3576.00 ft (KB) Capacity: 8000.00 psig
 Start Date: 2014.10.26 End Date: 2014.10.27 Last Calib.: 2014.10.27
 Start Time: 16:08:05 End Time: 02:19:00 Time On Btm: 2014.10.26 @ 19:35:00
 Time Off Btm: 2014.10.26 @ 23:42:30

TEST COMMENT: 30-IF-Built to 6"
 60-ISI-No Return.
 60-FF-Built to 8"
 90-FSI-No Return.



PRESSURE SUMMARY

Time (Min.)	Pressure (psig)	Temp (deg F)	Annotation
0	1773.01	102.56	Initial Hydro-static
1	42.31	101.64	Open To Flow (1)
30	32.31	105.28	Shut-In(1)
90	214.94	107.07	End Shut-In(1)
91	34.98	107.03	Open To Flow (2)
150	37.97	108.45	Shut-In(2)
246	196.77	109.94	End Shut-In(2)
248	1685.53	110.67	Final Hydro-static

Recovery

Length (ft)	Description	Volume (bbl)
20.00	M, w ith oil spots, 100%m	0.10
0.00	GIP-229'	0.00

* Recovery from multiple tests

Gas Rates

Choke (inches)	Pressure (psig)	Gas Rate (Mcf/d)



TRILOBITE TESTING, INC

DRILL STEM TEST REPORT

Gore Oil Company

17-14s-20w Ellis, KS

PO Box 2757
Wichita, KS 67202

Kingsley #5

Job Ticket: 60718

DST#: 3

ATTN: Chuck Schmultz

Test Start: 2014.10.26 @ 16:08:00

GENERAL INFORMATION:

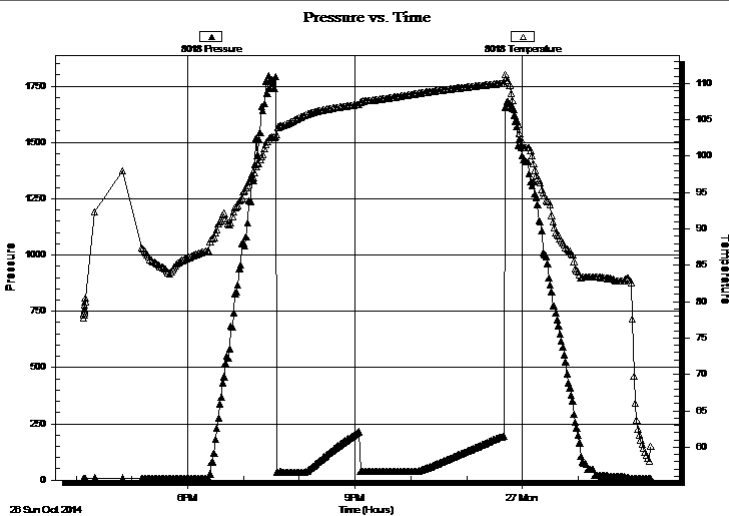
Formation:	LKC "H - J"		Test Type:	Conventional Bottom Hole (Reset)	
Deviated:	No Whipstock:	ft (KB)	Tester:	Phillip Gage	
Time Tool Opened:	19:35:30		Unit No:	70	
Time Test Ended:	02:19:00		Reference Elevations:	2170.00 ft (KB)	
Interval:	3575.00 ft (KB) To 3658.00 ft (KB) (TVD)			2162.00 ft (CF)	
Total Depth:	3658.00 ft (KB) (TVD)		KB to GR/CF:	8.00 ft	
Hole Diameter:	7.88 inches		Hole Condition:	Fair	

Serial #: 8018

Inside

Press@RunDepth:	psig @	3576.00 ft (KB)	Capacity:	8000.00 psig
Start Date:	2014.10.26	End Date:	2014.10.27	Last Calib.:
Start Time:	16:08:05	End Time:	02:19:00	Time On Btm:
				Time Off Btm:

TEST COMMENT: 30-IF-Built to 6"
60-ISI-No Return.
60-FF-Built to 8"
90-FSI-No Return.



PRESSURE SUMMARY

Time (Min.)	Pressure (psig)	Temp (deg F)	Annotation

Recovery

Length (ft)	Description	Volume (bbl)
20.00	M, w ith oil spots, 100%m	0.10
0.00	GIP-229'	0.00

Gas Rates

	Choke (inches)	Pressure (psig)	Gas Rate (Mcf/d)

* Recovery from multiple tests



**TRILOBITE
TESTING, INC**

DRILL STEM TEST REPORT

TOOL DIAGRAM

Gore Oil Company

17-14s-20w Ellis,KS

PO Box 2757
Wichita, KS 67202

Kingsley #5

Job Ticket: 60718

DST#: 3

ATTN: Chuck Schmultz

Test Start: 2014.10.26 @ 16:08:00

Tool Information

Drill Pipe:	Length: 3460.00 ft	Diameter: 3.80 inches	Volume: 48.53 bbl	Tool Weight: 2500.00 lb
Heavy Wt. Pipe:	Length: 0.00 ft	Diameter: 2.75 inches	Volume: 0.00 bbl	Weight set on Packer: 25000.00 lb
Drill Collar:	Length: 120.00 ft	Diameter: 2.25 inches	Volume: 0.59 bbl	Weight to Pull Loose: 54000.00 lb
			<u>Total Volume: 49.12 bbl</u>	Tool Chased 0.00 ft
Drill Pipe Above KB:	33.00 ft			String Weight: Initial 48000.00 lb
Depth to Top Packer:	3575.00 ft			Final 50000.00 lb
Depth to Bottom Packer:	ft			
Interval between Packers:	83.00 ft			
Tool Length:	111.00 ft			
Number of Packers:	2	Diameter: 6.75 inches		

Tool Comments:

Tool Description

Tool Description	Length (ft)	Serial No.	Position	Depth (ft)	Accum. Lengths
Change Over Sub	1.00			3548.00	
Shut In Tool	5.00			3553.00	
Hydraulic tool	5.00			3558.00	
Jars	5.00			3563.00	
Safety Joint	2.00			3565.00	
Packer	5.00			3570.00	28.00 Bottom Of Top Packer
Packer	5.00			3575.00	
Stubb	1.00			3576.00	
Recorder	0.00	8018	Inside	3576.00	
Recorder	0.00	8700	Outside	3576.00	
Perforations	14.00			3590.00	
Change Over Sub	1.00			3591.00	
Drill Pipe	63.00			3654.00	
Change Over Sub	1.00			3655.00	
Bullnose	3.00			3658.00	83.00 Bottom Packers & Anchor

Total Tool Length: 111.00



**TRILOBITE
TESTING, INC**

DRILL STEM TEST REPORT

FLUID SUMMARY

Gore Oil Company

17-14s-20w Ellis,KS

PO Box 2757
Wichita, KS 67202

Kingsley #5

Job Ticket: 60718

DST#: 3

ATTN: Chuck Schmultz

Test Start: 2014.10.26 @ 16:08:00

Mud and Cushion Information

Mud Type: Gel Chem

Cushion Type:

Oil API:

deg API

Mud Weight: 9.00 lb/gal

Cushion Length:

ft

Water Salinity:

ppm

Viscosity: 44.00 sec/qt

Cushion Volume:

bbbl

Water Loss: 9.38 in³

Gas Cushion Type:

Resistivity: ohm.m

Gas Cushion Pressure:

psig

Salinity: 3200.00 ppm

Filter Cake: 1.50 inches

Recovery Information

Recovery Table

Length ft	Description	Volume bbl
20.00	M, with oil spots, 100%m	0.098
0.00	GIP-229'	0.000

Total Length: 20.00 ft Total Volume: 0.098 bbl

Num Fluid Samples: 0

Num Gas Bombs: 0

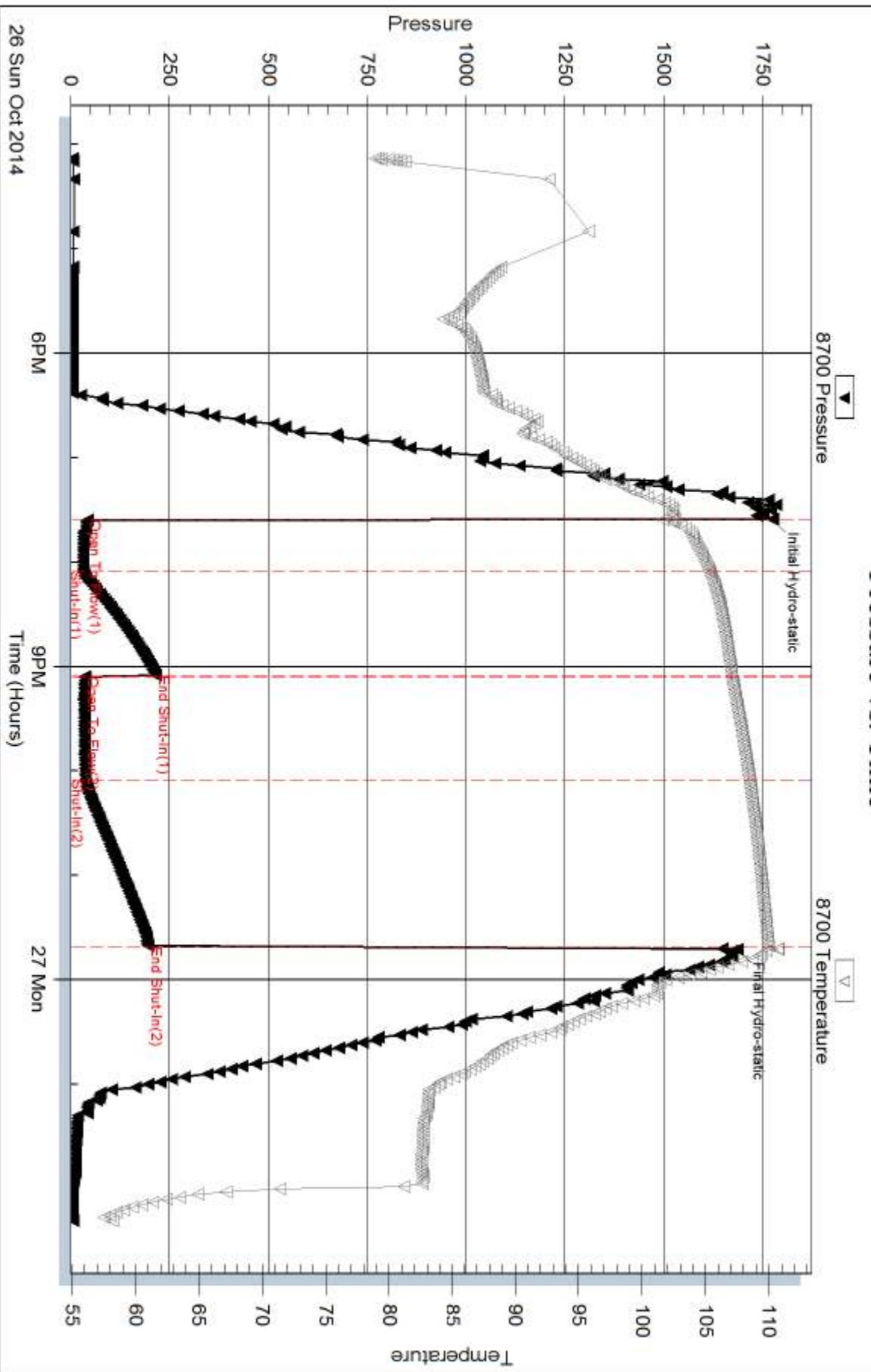
Serial #:

Laboratory Name:

Laboratory Location:

Recovery Comments:

Pressure vs. Time



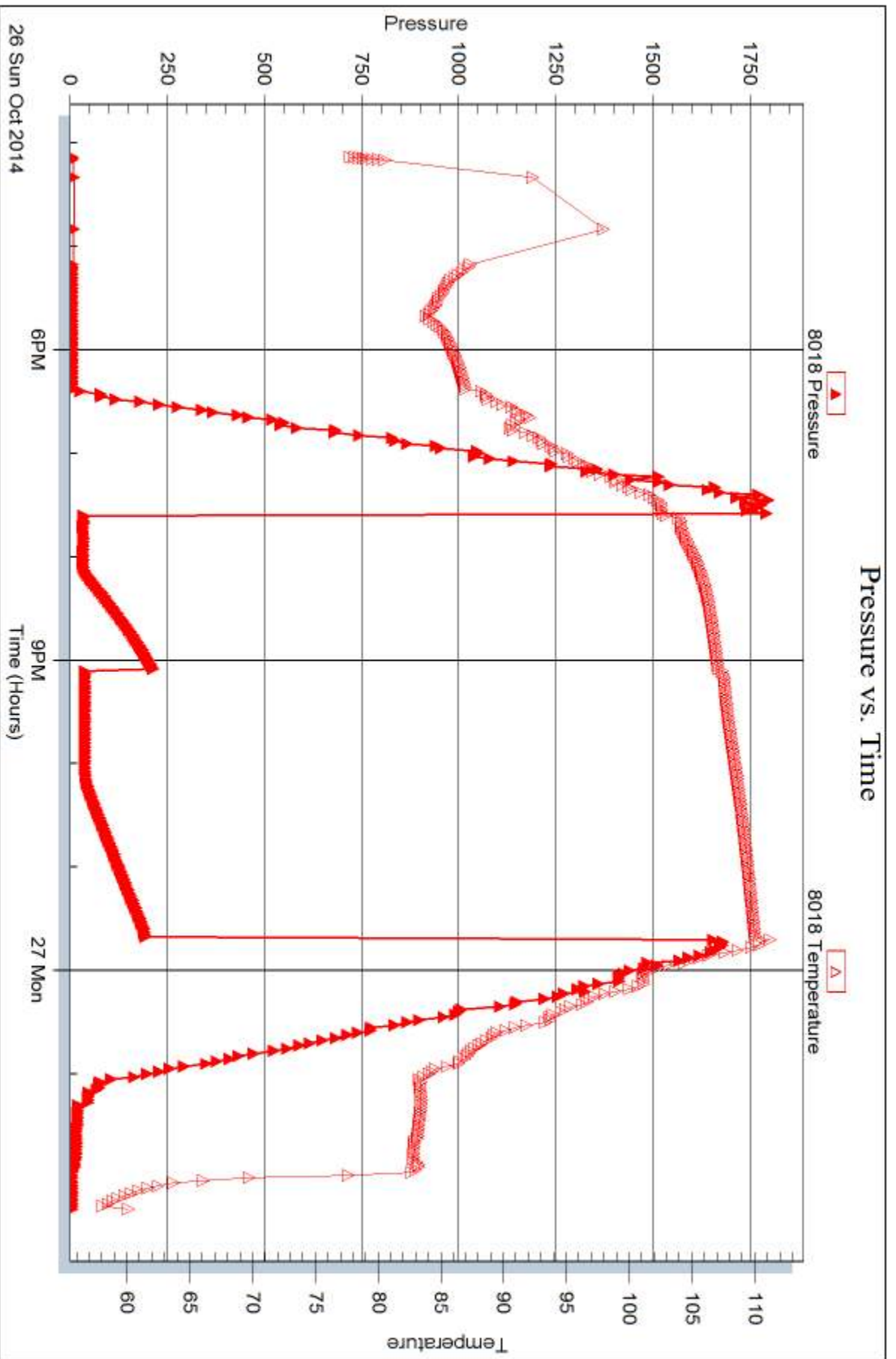
Serial #: 8018

Inside

Gore Oil Company

Kingsley #5

DST Test Number: 3





DRILL STEM TEST REPORT

Prepared For: **Gore Oil Company**

PO Box 2757
Wichita, KS 67202

ATTN: Chuck Schmultz

Kingsley #5

17-14s-20w Ellis,KS

Start Date: 2014.10.27 @ 22:26:00

End Date: 2014.10.28 @ 07:20:30

Job Ticket #: 60719 DST #: 4

Trilobite Testing, Inc
1515 Commerce Parkway Hays, KS 67601
ph: 785-625-4778 fax: 785-625-5620

Printed: 2014.10.31 @ 08:30:32



TRILOBITE TESTING, INC

DRILL STEM TEST REPORT

Gore Oil Company

17-14s-20w Ellis,KS

PO Box 2757
Wichita, KS 67202

Kingsley #5

Job Ticket: 60719

DST#: 4

ATTN: Chuck Schmultz

Test Start: 2014.10.27 @ 22:26:00

GENERAL INFORMATION:

Formation: **Arbuckle**

Deviated: No Whipstock: ft (KB)

Time Tool Opened: 02:34:30

Time Test Ended: 07:20:30

Test Type: Conventional Bottom Hole (Reset)

Tester: Phillip Gage

Unit No: 70

Interval: 3807.00 ft (KB) To 3838.00 ft (KB) (TVD)

Reference Elevations: 2170.00 ft (KB)

Total Depth: 3838.00 ft (KB) (TVD)

2162.00 ft (CF)

Hole Diameter: 7.88 inches Hole Condition: Fair

KB to GR/CF: 8.00 ft

Serial #: 8700 Outside

Press@RunDepth: 25.78 psig @ 3808.00 ft (KB)

Capacity: 8000.00 psig

Start Date: 2014.10.27

End Date:

2014.10.28

Last Calib.: 2014.10.28

Start Time: 22:26:05

End Time:

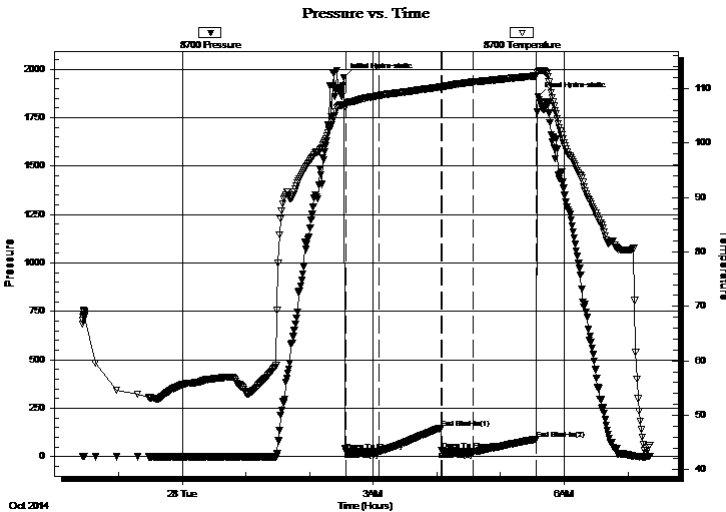
07:20:30

Time On Btm: 2014.10.28 @ 02:32:30

Time Off Btm: 2014.10.28 @ 05:35:30

TEST COMMENT: 30-IF-Built to 1"
60-ISI-No Return
30-FF-No Blow
60-FSI-No Return

PRESSURE SUMMARY



Time (Min.)	Pressure (psig)	Temp (deg F)	Annotation
0	1958.06	107.03	Initial Hydro-static
2	28.45	107.00	Open To Flow (1)
33	26.41	108.72	Shut-In(1)
91	148.12	110.30	End Shut-In(1)
92	30.44	110.30	Open To Flow (2)
122	25.78	111.22	Shut-In(2)
182	89.23	112.37	End Shut-In(2)
183	1860.82	113.13	Final Hydro-static

Recovery

Length (ft)	Description	Volume (bbl)
10.00	SOCM, 10%o, 90%m	0.05
10.00	O, 100%o	0.05

Gas Rates

	Choke (inches)	Pressure (psig)	Gas Rate (Mcf/d)

* Recovery from multiple tests



TRILOBITE TESTING, INC

DRILL STEM TEST REPORT

Gore Oil Company

17-14s-20w Ellis, KS

PO Box 2757
Wichita, KS 67202

Kingsley #5

Job Ticket: 60719

DST#: 4

ATTN: Chuck Schmultz

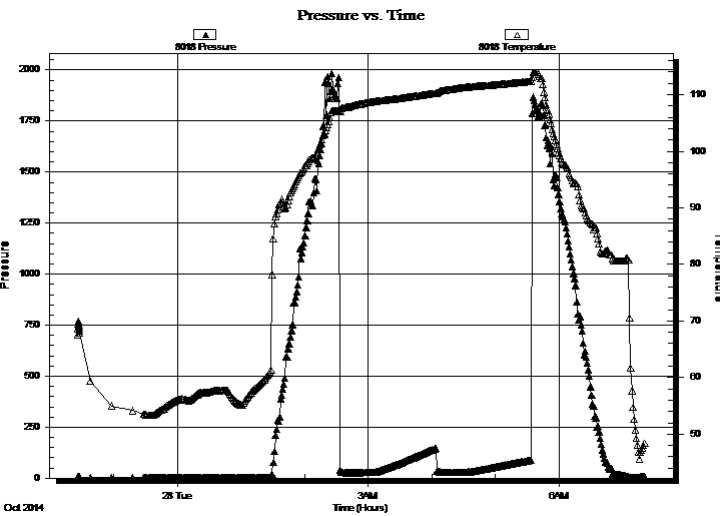
Test Start: 2014.10.27 @ 22:26:00

GENERAL INFORMATION:

Formation: Arbuckle	Test Type: Conventional Bottom Hole (Reset)
Deviated: No Whipstock: ft (KB)	Tester: Phillip Gage
Time Tool Opened: 02:34:30	Unit No: 70
Time Test Ended: 07:20:30	Reference Elevations: 2170.00 ft (KB)
Interval: 3807.00 ft (KB) To 3838.00 ft (KB) (TVD)	2162.00 ft (CF)
Total Depth: 3838.00 ft (KB) (TVD)	KB to GR/CF: 8.00 ft
Hole Diameter: 7.88 inches	Hole Condition: Fair

Serial #: 8018	Inside	Capacity: 8000.00 psig
Press@RunDepth: psig @ 3808.00 ft (KB)	Start Date: 2014.10.27	Last Calib.: 2014.10.28
End Date: 2014.10.28	End Time: 07:20:30	Time On Btm:
Start Time: 22:26:05	End Time: 07:20:30	Time Off Btm:

TEST COMMENT: 30-IF-Built to 1"
60-ISI-No Return
30-FF-No Blow
60-FSI-No Return



PRESSURE SUMMARY

Time (Min.)	Pressure (psig)	Temp (deg F)	Annotation

Recovery

Length (ft)	Description	Volume (bbl)
10.00	SOCM, 10%o, 90%m	0.05
10.00	O, 100%o	0.05

Gas Rates

Choke (inches)	Pressure (psig)	Gas Rate (Mcf/d)

* Recovery from multiple tests



**TRILOBITE
TESTING, INC**

DRILL STEM TEST REPORT

TOOL DIAGRAM

Gore Oil Company

17-14s-20w Ellis,KS

PO Box 2757
Wichita, KS 67202

Kingsley #5

Job Ticket: 60719

DST#: 4

ATTN: Chuck Schmultz

Test Start: 2014.10.27 @ 22:26:00

Tool Information

Drill Pipe:	Length: 3679.00 ft	Diameter: 3.80 inches	Volume: 51.61 bbl	Tool Weight: 2500.00 lb
Heavy Wt. Pipe:	Length: 0.00 ft	Diameter: 2.75 inches	Volume: 0.00 bbl	Weight set on Packer: 25000.00 lb
Drill Collar:	Length: 120.00 ft	Diameter: 2.25 inches	Volume: 0.59 bbl	Weight to Pull Loose: 58000.00 lb
			<u>Total Volume: 52.20 bbl</u>	Tool Chased 0.00 ft
Drill Pipe Above KB:	20.00 ft			String Weight: Initial 52000.00 lb
Depth to Top Packer:	3807.00 ft			Final 52000.00 lb
Depth to Bottom Packer:	ft			
Interval between Packers:	31.00 ft			
Tool Length:	59.00 ft			
Number of Packers:	2	Diameter: 6.75 inches		

Tool Comments:

Tool Description

Tool Description	Length (ft)	Serial No.	Position	Depth (ft)	Accum. Lengths
Change Over Sub	1.00			3780.00	
Shut In Tool	5.00			3785.00	
Hydraulic tool	5.00			3790.00	
Jars	5.00			3795.00	
Safety Joint	2.00			3797.00	
Packer	5.00			3802.00	28.00 Bottom Of Top Packer
Packer	5.00			3807.00	
Stubb	1.00			3808.00	
Recorder	0.00	8018	Inside	3808.00	
Recorder	0.00	8700	Outside	3808.00	
Perforations	27.00			3835.00	
Bullnose	3.00			3838.00	31.00 Bottom Packers & Anchor

Total Tool Length: 59.00



**TRILOBITE
TESTING, INC**

DRILL STEM TEST REPORT

FLUID SUMMARY

Gore Oil Company

17-14s-20w Ellis,KS

PO Box 2757
Wichita, KS 67202

Kingsley #5

Job Ticket: 60719

DST#: 4

ATTN: Chuck Schmultz

Test Start: 2014.10.27 @ 22:26:00

Mud and Cushion Information

Mud Type: Gel Chem

Cushion Type:

Oil API:

37 deg API

Mud Weight: 9.00 lb/gal

Cushion Length:

ft

Water Salinity:

ppm

Viscosity: 54.00 sec/qt

Cushion Volume:

bbbl

Water Loss: 9.19 in³

Gas Cushion Type:

Resistivity: ohm.m

Gas Cushion Pressure:

psig

Salinity: 3500.00 ppm

Filter Cake: 2.00 inches

Recovery Information

Recovery Table

Length ft	Description	Volume bbbl
10.00	SOCM, 10%o, 90%m	0.049
10.00	O, 100%o	0.049

Total Length: 20.00 ft Total Volume: 0.098 bbl

Num Fluid Samples: 0

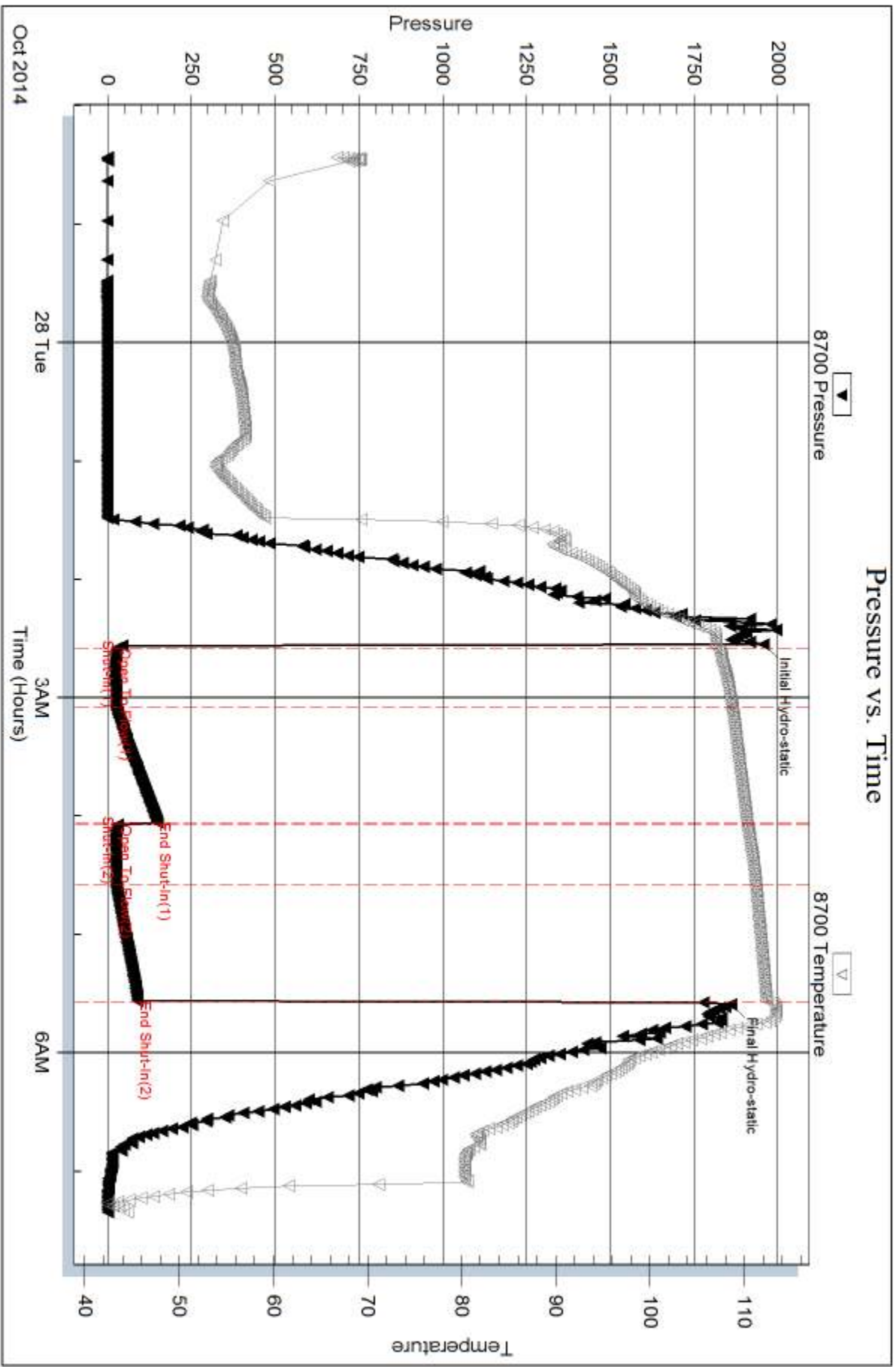
Num Gas Bombs: 0

Serial #:

Laboratory Name:

Laboratory Location:

Recovery Comments:



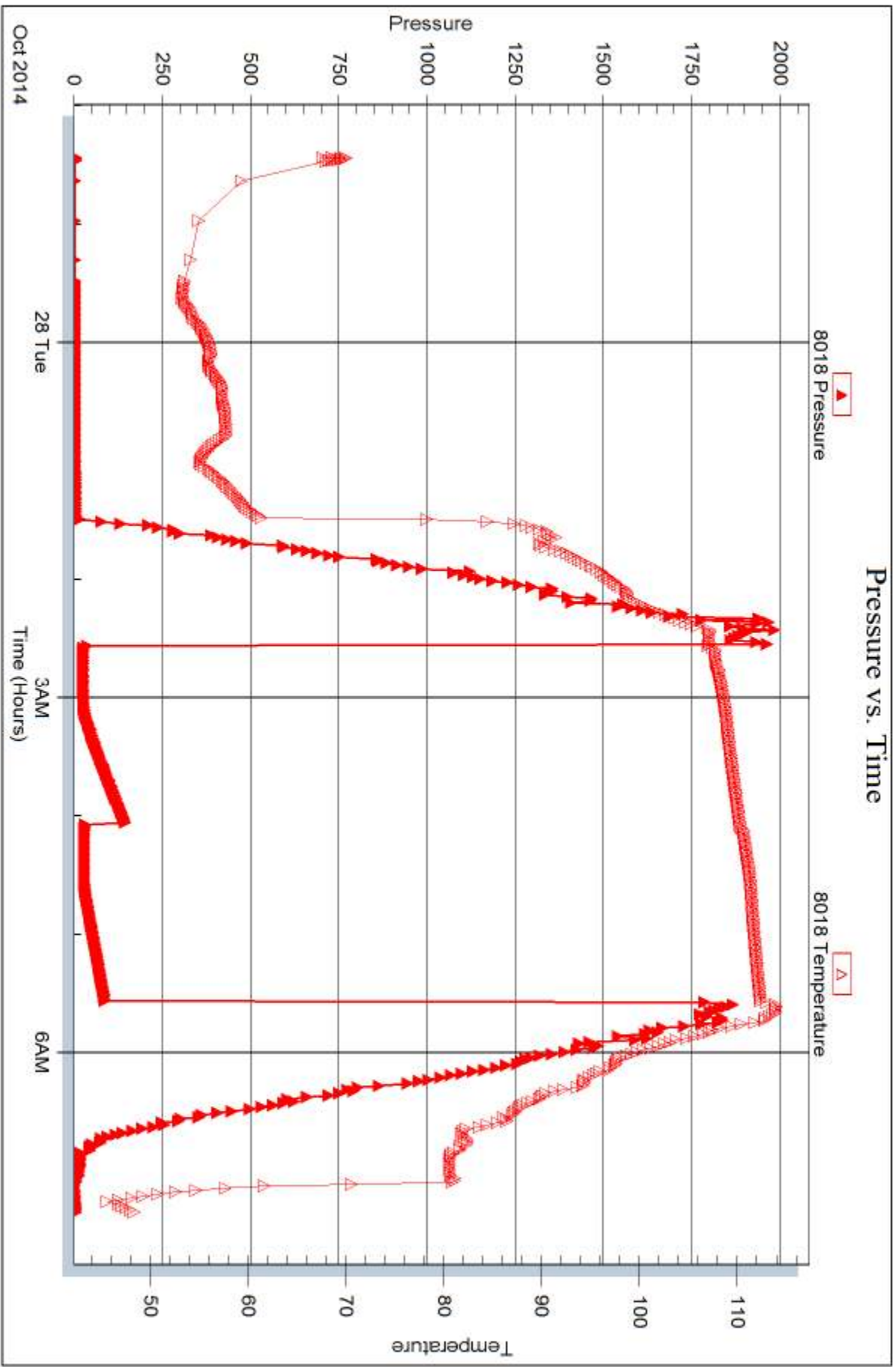
Serial #: 8018

Inside

Gore Oil Company

Kingsley #5

DST Test Number: 4



Trilobite Testing, Inc

Ref. No: 60719

Printed: 2014, 10, 31 @ 08:30:33



DRILL STEM TEST REPORT

Prepared For: **Gore Oil Company**

PO Box 2757
Wichita, KS 67202

ATTN: Chuck Schmultz

Kingsley #5

17-14s-20w Ellis,KS

Start Date: 2014.10.28 @ 14:10:00

End Date: 2014.10.28 @ 21:53:00

Job Ticket #: 60720 DST #: 5

Trilobite Testing, Inc
1515 Commerce Parkway Hays, KS 67601
ph: 785-625-4778 fax: 785-625-5620

Printed: 2014.10.31 @ 08:30:04



TRILOBITE TESTING, INC

DRILL STEM TEST REPORT

Gore Oil Company

17-14s-20w Ellis,KS

PO Box 2757
Wichita, KS 67202

Kingsley #5

Job Ticket: 60720

DST#: 5

ATTN: Chuck Schmultz

Test Start: 2014.10.28 @ 14:10:00

GENERAL INFORMATION:

Formation: **Reagan Sand**

Deviated: No Whipstock: ft (KB)

Time Tool Opened: 16:53:30

Time Test Ended: 21:53:00

Test Type: Conventional Bottom Hole (Reset)

Tester: Phillip Gage

Unit No: 70

Interval: 3804.00 ft (KB) To 3846.00 ft (KB) (TVD)

Reference Elevations: 2170.00 ft (KB)

Total Depth: 3846.00 ft (KB) (TVD)

2162.00 ft (CF)

Hole Diameter: 7.88 inches Hole Condition: Fair

KB to GR/CF: 8.00 ft

Serial #: 8700 Outside

Press@RunDepth: 1165.42 psig @ 3805.00 ft (KB)

Capacity: 8000.00 psig

Start Date: 2014.10.28

End Date:

2014.10.28

Last Calib.:

2014.10.28

Start Time: 14:10:05

End Time:

21:52:59

Time On Btm:

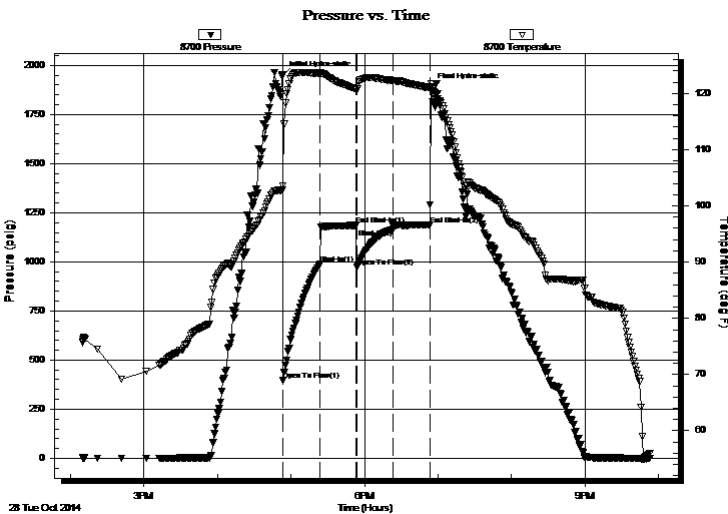
2014.10.28 @ 16:53:00

Time Off Btm:

2014.10.28 @ 18:54:00

TEST COMMENT: 30-IF-BOB in 1 min.
30-ISI-No Return
30-FF-BOB in 1 min.
30-FSI-No Return

PRESSURE SUMMARY



Time (Min.)	Pressure (psig)	Temp (deg F)	Annotation
0	1950.00	102.87	Initial Hydro-static
1	395.69	103.62	Open To Flow (1)
31	987.22	123.51	Shut-In(1)
60	1186.19	120.87	End Shut-In(1)
61	971.92	120.73	Open To Flow (2)
90	1165.42	122.26	Shut-In(2)
120	1187.68	120.96	End Shut-In(2)
121	1885.93	121.09	Final Hydro-static

Recovery

Length (ft)	Description	Volume (bbl)
1638.00	SMCW, 10%m, 90%w	21.88
315.00	MCW, 20%m, 80%w	4.42
645.00	MCW, 50%m, 50%w	9.05

* Recovery from multiple tests

Gas Rates

Choke (inches)	Pressure (psig)	Gas Rate (Mcf/d)



DRILL STEM TEST REPORT

Gore Oil Company

17-14s-20w Ellis, KS

PO Box 2757
Wichita, KS 67202

Kingsley #5

Job Ticket: 60720

DST#: 5

ATTN: Chuck Schmultz

Test Start: 2014.10.28 @ 14:10:00

GENERAL INFORMATION:

Formation: **Reagan Sand**

Deviated: No Whipstock: ft (KB)

Time Tool Opened: 16:53:30

Time Test Ended: 21:53:00

Interval: 3804.00 ft (KB) To 3846.00 ft (KB) (TVD)

Total Depth: 3846.00 ft (KB) (TVD)

Hole Diameter: 7.88 inches Hole Condition: Fair

Test Type: Conventional Bottom Hole (Reset)

Tester: Phillip Gage

Unit No: 70

Reference Elevations: 2170.00 ft (KB)

2162.00 ft (CF)

KB to GR/CF: 8.00 ft

Serial #: 8018 Inside

Press@RunDepth: psig @ 3805.00 ft (KB)

Start Date: 2014.10.28

End Date: 2014.10.28

Capacity: 8000.00 psig

Last Calib.: 2014.10.28

Start Time: 14:10:05

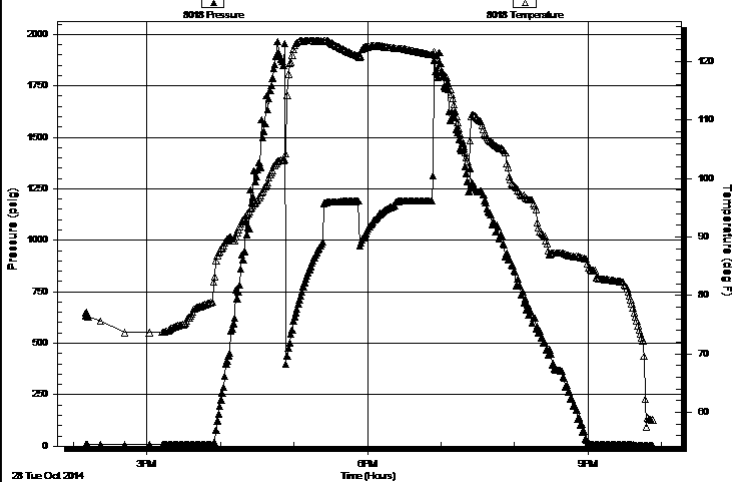
End Time: 21:52:59

Time On Btm:

Time Off Btm:

TEST COMMENT: 30-IF-BOB in 1 min.
30-ISI-No Return
30-FF-BOB in 1 min.
30-FSI-No Return

Pressure vs. Time



PRESSURE SUMMARY

Time (Min.)	Pressure (psig)	Temp (deg F)	Annotation

Recovery

Length (ft)	Description	Volume (bbl)
1638.00	SMCW, 10%m, 90%w	21.88
315.00	MCW, 20%m, 80%w	4.42
645.00	MCW, 50%m, 50%w	9.05

Gas Rates

Choke (inches)	Pressure (psig)	Gas Rate (Mcf/d)

* Recovery from multiple tests



**TRILOBITE
TESTING, INC**

DRILL STEM TEST REPORT

TOOL DIAGRAM

Gore Oil Company

17-14s-20w Ellis,KS

PO Box 2757
Wichita, KS 67202

Kingsley #5

Job Ticket: 60720

DST#: 5

ATTN: Chuck Schmultz

Test Start: 2014.10.28 @ 14:10:00

Tool Information

Drill Pipe:	Length: 3680.00 ft	Diameter: 3.80 inches	Volume: 51.62 bbl	Tool Weight: 2500.00 lb
Heavy Wt. Pipe:	Length: 0.00 ft	Diameter: 2.75 inches	Volume: 0.00 bbl	Weight set on Packer: 25000.00 lb
Drill Collar:	Length: 120.00 ft	Diameter: 2.25 inches	Volume: 0.59 bbl	Weight to Pull Loose: 62000.00 lb
			<u>Total Volume: 52.21 bbl</u>	Tool Chased 0.00 ft
Drill Pipe Above KB:	24.00 ft			String Weight: Initial 50000.00 lb
Depth to Top Packer:	3804.00 ft			Final 61000.00 lb
Depth to Bottom Packer:	ft			
Interval between Packers:	42.00 ft			
Tool Length:	70.00 ft			
Number of Packers:	2	Diameter: 6.75 inches		

Tool Comments:

Tool Description

Tool Description	Length (ft)	Serial No.	Position	Depth (ft)	Accum. Lengths
Change Over Sub	1.00			3777.00	
Shut In Tool	5.00			3782.00	
Hydraulic tool	5.00			3787.00	
Jars	5.00			3792.00	
Safety Joint	2.00			3794.00	
Packer	5.00			3799.00	28.00 Bottom Of Top Packer
Packer	5.00			3804.00	
Stubb	1.00			3805.00	
Recorder	0.00	8018	Inside	3805.00	
Recorder	0.00	8700	Outside	3805.00	
Perforations	5.00			3810.00	
Change Over Sub	1.00			3811.00	
Drill Pipe	31.00			3842.00	
Change Over Sub	1.00			3843.00	
Bullnose	3.00			3846.00	42.00 Bottom Packers & Anchor

Total Tool Length: 70.00



**TRILOBITE
TESTING, INC**

DRILL STEM TEST REPORT

FLUID SUMMARY

Gore Oil Company

17-14s-20w Ellis,KS

PO Box 2757
Wichita, KS 67202

Kingsley #5

Job Ticket: 60720

DST#: 5

ATTN: Chuck Schmultz

Test Start: 2014.10.28 @ 14:10:00

Mud and Cushion Information

Mud Type: Gel Chem
Mud Weight: 9.00 lb/gal
Viscosity: 48.00 sec/qt
Water Loss: 9.19 in³
Resistivity: ohm.m
Salinity: 5000.00 ppm
Filter Cake: 1.50 inches

Cushion Type:
Cushion Length: ft
Cushion Volume: bbl
Gas Cushion Type:
Gas Cushion Pressure: psig

Oil API: deg API
Water Salinity: 71000 ppm

Recovery Information

Recovery Table

Length ft	Description	Volume bbl
1638.00	SMCW, 10%m, 90%w	21.884
315.00	MCW, 20%m, 80%w	4.419
645.00	MCW, 50%m, 50%w	9.048

Total Length: 2598.00 ft Total Volume: 35.351 bbl

Num Fluid Samples: 0

Num Gas Bombs: 0

Serial #:

Laboratory Name:

Laboratory Location:

Recovery Comments: .28 @ 41 degrees = 71,000 Salinity

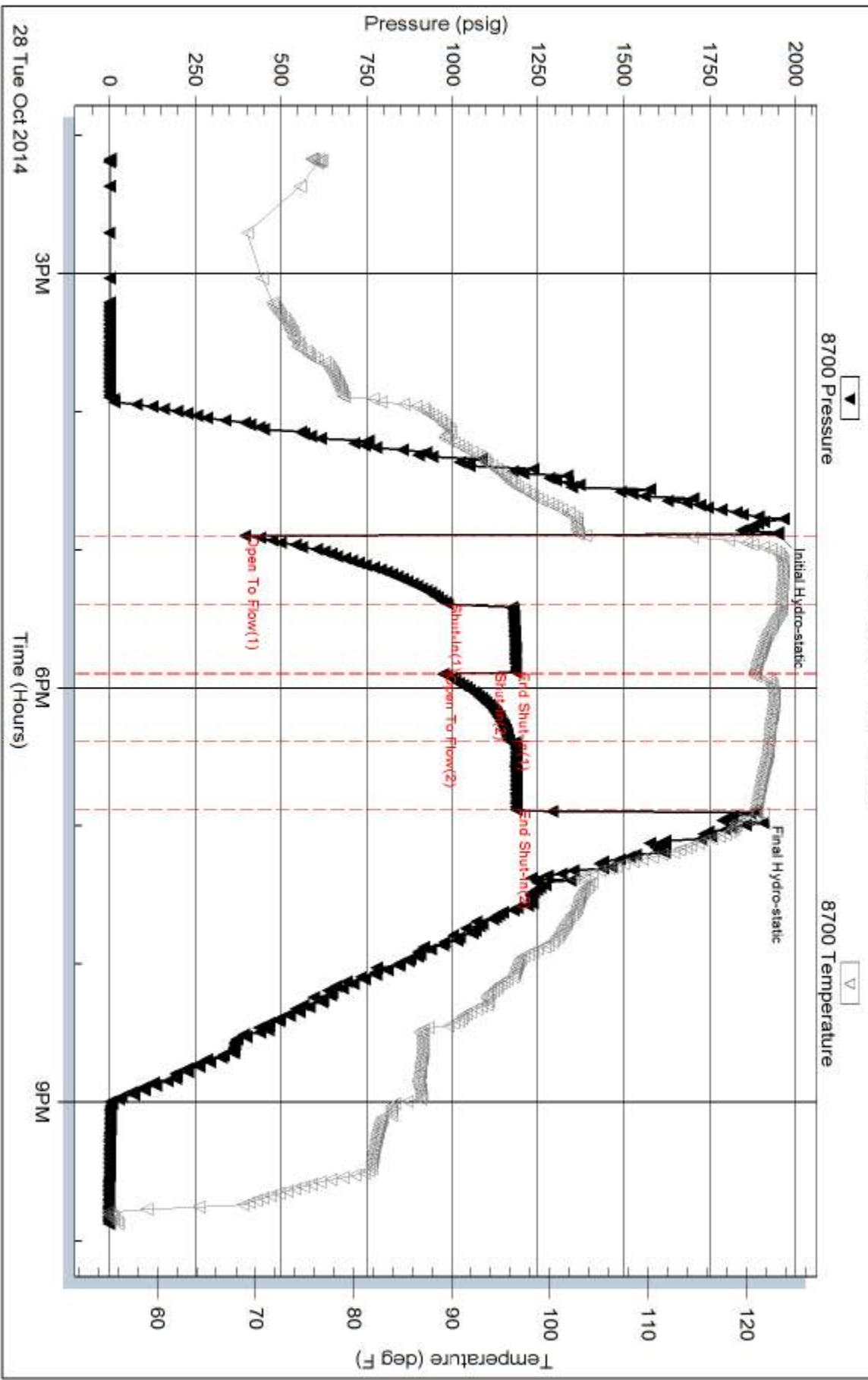
Serial #: 8700

Outside Gore Oil Company

Kingsley #5

DST Test Number: 5

Pressure vs. Time



Trilobite Testing, Inc

Ref. No: 60720

Printed: 2014, 10, 31 @ 08:30:05

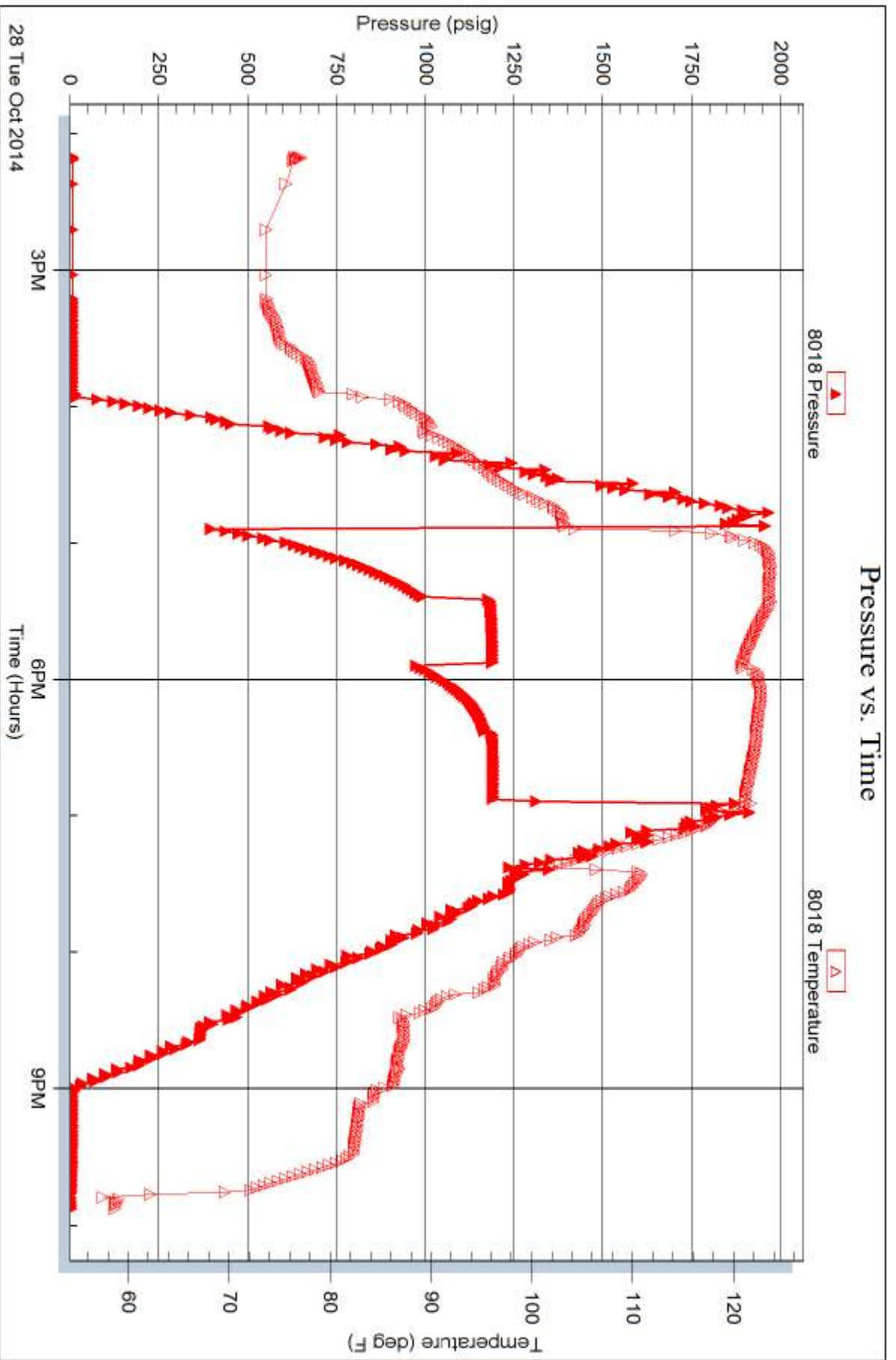
Serial #: 8018

Inside

Gore Oil Company

Kingsley #5

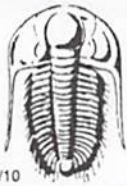
DST Test Number: 5



Trilobite Testing, Inc

Ref. No: 60720

Printed: 2014, 10, 31 @ 08:30:05



TRILOBITE TESTING INC.

1515 Commerce Parkway • Hays, Kansas 67601

Test Ticket

NO. **60716**

4/10

Well Name & No. Kingsley #5 Test No. 1 Date 10-24-14
 Company Gore Oil Company Elevation 2170 KB 2162 GL
 Address 202 S St Francis P.O. Box 2757 Wichita, KS 67202
 Co. Rep / Geo. Chuck Schmutz Rig Maverick 102
 Location: Sec. 17 Twp. 14g Rge. 20w Co. Ellis State KS

Interval Tested 3345-3430 Zone Tested Oread
 Anchor Length 85' Drill Pipe Run 3212 Mud Wt. 8.7
 Top Packer Depth 3340 Drill Collars Run 120 Vis 50
 Bottom Packer Depth 3345 Wt. Pipe Run 0 WL 9.7
 Total Depth 3430 Chlorides 2,500 ppm System LCM 2#
 Blow Description IF Built to 3 1/4"
ISI - No Return
FF Built to 1 1/4"
FSE - No Return

Rec	Feet of	%gas	%oil	%water	%mud
<u>141'</u>	<u>M, with oil spots</u>				<u>100%</u>
Rec	Feet of	%gas	%oil	%water	%mud
Rec	Feet of	%gas	%oil	%water	%mud
Rec	Feet of	%gas	%oil	%water	%mud

Rec Total 141' BHT 108 Gravity _____ API RW _____ @ _____ ° F Chlorides _____ ppm

(A) Initial Hydrostatic <u>1,623</u>	<input checked="" type="checkbox"/> Test <u>1150</u>	T-On Location <u>16:40</u>
(B) First Initial Flow <u>38</u>	<input checked="" type="checkbox"/> Jars <u>250</u>	T-Started <u>16:47</u>
(C) First Final Flow <u>64</u>	<input checked="" type="checkbox"/> Safety Joint <u>75</u>	T-Open <u>21:28</u>
(D) Initial Shut-In <u>1,052</u>	<input type="checkbox"/> Circ Sub _____	T-Pulled <u>00:28</u>
(E) Second Initial Flow <u>72</u>	<input checked="" type="checkbox"/> Hourly Standby <u>1h 100</u>	T-Out <u>02:52</u>
(F) Second Final Flow <u>91</u>	<input checked="" type="checkbox"/> Mileage <u>52 RT 80.60</u>	Comments _____
(G) Final Shut-In <u>1,032</u>	<input type="checkbox"/> Sampler _____	<input type="checkbox"/> Ruined Shale Packer _____
(H) Final Hydrostatic <u>1,574</u>	<input type="checkbox"/> Straddle _____	<input type="checkbox"/> Ruined Packer _____
Initial Open <u>30</u>	<input type="checkbox"/> Shale Packer _____	<input type="checkbox"/> Extra Copies _____
Initial Shut-In <u>60</u>	<input type="checkbox"/> Extra Packer _____	Sub Total <u>0</u>
Final Flow <u>30</u>	<input type="checkbox"/> Extra Recorder _____	Total <u>1655.60</u>
Final Shut-In <u>60</u>	<input type="checkbox"/> Day Standby _____	MP/DST Disc't _____
	<input type="checkbox"/> Accessibility _____	
	Sub Total <u>1655.60</u>	

Approved By _____ Our Representative Phil G. Thank You
 Trilobite Testing Inc. shall not be liable for damaged of any kind of the property or personnel of the one for whom a test is made, or for any loss suffered or sustained, directly or indirectly, through the use of its equipment, or its statements or opinion concerning the results of any test, tools lost or damaged in the hole shall be paid for at cost by the party for whom the test is made.



TRILOBITE TESTING INC.

1515 Commerce Parkway • Hays, Kansas 67601

Test Ticket

NO. **60717**

4/10

Well Name & No. Kingsley #5 Test No. 2 Date 10-25-14
 Company Cove Oil Company Elevation 2170 KB 2162 GL
 Address 202 S St Francis P.O. Box 2757 Wichita, KS 67202
 Co. Rep / Geo. Chuck Schmultz Rig Maverick 10'2
 Location: Sec. 17 Twp. 14S Rge. 20W Co. Ellis State KS

Interval Tested 3447-3502 Zone Tested Lansing "A-B-C"
 Anchor Length 55' Drill Pipe Run 3305 Mud Wt. 8.7
 Top Packer Depth 3447 Drill Collars Run 120 Vis 50
 Bottom Packer Depth 3447 Wt. Pipe Run 0 WL 9.2
 Total Depth 3502 Chlorides 2,500 ppm System LCM 2#

Blow Description IF BOBIN 5mins
EST No Return
FF BOBIN 7mins
FST - No Return

Rec	Feet of	%gas	%oil	%water	%mud
<u>819'</u>	<u>SMCW, with oil spots</u>		<u>90</u>	<u>10</u>	
<u>315'</u>	<u>MCW, with oil spots</u>		<u>70</u>	<u>30</u>	
Rec	Feet of	%gas	%oil	%water	%mud
Rec	Feet of	%gas	%oil	%water	%mud
Rec	Feet of	%gas	%oil	%water	%mud

Rec Total 1,134 BHT 114 Gravity — API RW 17 @ 61 °F Chlorides 53,000 ppm

(A) Initial Hydrostatic <u>1706</u>	<input checked="" type="checkbox"/> Test <u>1150</u>	T-On Location <u>13:41</u>
(B) First Initial Flow <u>86</u>	<input checked="" type="checkbox"/> Jars <u>250</u>	T-Started <u>13:42</u>
(C) First Final Flow <u>296</u>	<input checked="" type="checkbox"/> Safety Joint <u>75</u>	T-Open <u>17:00</u>
(D) Initial Shut-In <u>764</u>	<input type="checkbox"/> Circ Sub	T-Pulled <u>21:00</u>
(E) Second Initial Flow <u>313</u>	<input type="checkbox"/> Hourly Standby	T-Out <u>23:32</u>
(F) Second Final Flow <u>536</u>	<input checked="" type="checkbox"/> Mileage <u>52 RT</u> 80.60	Comments
(G) Final Shut-In <u>745</u>	<input type="checkbox"/> Sampler	
(H) Final Hydrostatic <u>1,623</u>	<input type="checkbox"/> Straddle	<input type="checkbox"/> Ruined Shale Packer
	<input type="checkbox"/> Shale Packer	<input type="checkbox"/> Ruined Packer
	<input type="checkbox"/> Extra Packer	<input type="checkbox"/> Extra Copies

Initial Open 30
 Initial Shut-In 60
 Final Flow 60
 Final Shut-In 90

Sub Total 1555.60 Total 1555.60 MP/DST Disc't

Approved By _____ Our Representative Phil Gray Thank You
 Trilobite Testing Inc. shall not be liable for damaged of any kind of the property or personnel of the one for whom a test is made, or for any loss suffered or sustained, directly or indirectly, through the use of its equipment, or its statements or opinion concerning the results of any test, tools lost or damaged in the hole shall be paid for at cost by the party for whom the test is made.



TRILOBITE TESTING INC.

1515 Commerce Parkway • Hays, Kansas 67601

Test Ticket

NO. **60718**

4/10

Well Name & No. Kingsley #5 Test No. 3 Date 10-26-14
 Company Cave Oil Company Elevation 2170 KB 2162 GL
 Address 202 S St Francis P.O. Box 2757 Wichita, KS 67202
 Co. Rep / Geo. Chuck Schmeltz Rig Maverick 102
 Location: Sec. 17 Twp. 14S Rge. 20W Co. ELLIS State KS

Interval Tested 3575-3658 Zone Tested LKC "H-I-J"
 Anchor Length 83' Drill Pipe Run 3460 Mud Wt. 9.2
 Top Packer Depth 3570 Drill Collars Run 120 Vis 44
 Bottom Packer Depth 3575 Wt. Pipe Run 0 WL 9.4
 Total Depth 3658 Chlorides 3,200 ppm System LCM 1 1/2 #
 Blow Description IF- Built to 6"
ISI- No Return
FF- Built to 8"
FSI- No Return.

Rec	Feet of	%gas	%oil	%water	%mud
<u>20'</u>	<u>M, with oil spots</u>				<u>100</u>
<u>0</u>	<u>GIP-229"</u>	<u>100</u>			
Rec	Feet of	%gas	%oil	%water	%mud
Rec	Feet of	%gas	%oil	%water	%mud
Rec	Feet of	%gas	%oil	%water	%mud

Rec Total 20' BHT 110 Gravity _____ API RW _____ @ _____ ° F Chlorides _____ ppm

(A) Initial Hydrostatic 1,773 Test 1150 T-On Location 16:05
 (B) First Initial Flow 42 Jars 250 T-Started 16:08
 (C) First Final Flow 32 Safety Joint 75 T-Open 19:35
 (D) Initial Shut-In 214 Circ Sub _____ T-Pulled 23:35
 (E) Second Initial Flow 34 Hourly Standby _____ T-Out 02:19
 (F) Second Final Flow 37 Mileage 52 RT 80.60 Comments _____
 (G) Final Shut-In 196 Sampler _____
 (H) Final Hydrostatic 1,685 Straddle _____ Ruined Shale Packer _____
 Shale Packer _____ Ruined Packer _____
 Extra Packer _____ Extra Copies _____
 Initial Open 30 Extra Recorder _____ Sub Total 0
 Initial Shut-In 60 Day Standby _____ Total 1555.60
 Final Flow 60 Accessibility _____ MP/DST Disc't _____
 Final Shut-In 90 Sub Total 1555.60

Approved By _____

Our Representative Philip Lee thank You

Trilobite Testing Inc. shall not be liable for damaged of any kind of the property or personnel of the one for whom a test is made, or for any loss suffered or sustained, directly or indirectly, through the use of its equipment, or its statements or opinion concerning the results of any test, tools lost or damaged in the hole shall be paid for at cost by the party for whom the test is made.



TRILOBITE TESTING INC.

1515 Commerce Parkway • Hays, Kansas 67601

Test Ticket

NO. 60719

4/10

Well Name & No. Kingsley #5 Test No. 4 Date 10-27-14
 Company Gore Oil Company Elevation 2170 KB 2162 GL
 Address 202 S St Francis P.O. Box 2757 Wichita, KS 67202
 Co. Rep / Geo. Chuck Schmutz Rig Mareack 102
 Location: Sec. 17 Twp. 14S Rge. 20W Co. Ellis State KS

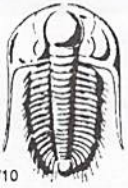
Interval Tested 3807-3838 Zone Tested ~~Wagon Wheel~~ Arbuckle
 Anchor Length 31' Drill Pipe Run 3679 Mud Wt. 9.1
 Top Packer Depth 3802 Drill Collars Run 120 Vis 54
 Bottom Packer Depth 3807 Wt. Pipe Run 0 WL 9.2
 Total Depth 3838 Chlorides 3,500 ppm System LCM 2#
 Blow Description IF Built to 1"
ISF No Return
FF- No Blow
FSE No Return

Rec	Feet of	%gas	%oil	%water	%mud
<u>10'</u>	<u>50CM</u>		<u>10</u>		<u>90</u>
<u>10'</u>	<u>0</u>		<u>100</u>		
Rec	Feet of	%gas	%oil	%water	%mud
Rec	Feet of	%gas	%oil	%water	%mud
Rec	Feet of	%gas	%oil	%water	%mud

Rec Total 20' BHT 113 Gravity 37 API RW — F Chlorides — ppm

(A) Initial Hydrostatic <u>1,958</u>	<input checked="" type="checkbox"/> Test <u>1150</u>	T-On Location <u>22:25</u>
(B) First Initial Flow <u>28</u>	<input checked="" type="checkbox"/> Jars <u>250</u>	T-Started <u>22:26</u>
(C) First Final Flow <u>26</u>	<input checked="" type="checkbox"/> Safety Joint <u>75</u>	T-Open <u>02:34</u>
(D) Initial Shut-In <u>148</u>	<input type="checkbox"/> Circ Sub	T-Pulled <u>05:34</u>
(E) Second Initial Flow <u>30</u>	<input type="checkbox"/> Hourly Standby	T-Out <u>07:21</u>
(F) Second Final Flow <u>25</u>	<input checked="" type="checkbox"/> Mileage <u>57 RT</u> 80.60	Comments
(G) Final Shut-In <u>89</u>	<input type="checkbox"/> Sampler	
(H) Final Hydrostatic <u>1,860</u>	<input type="checkbox"/> Straddle	<input type="checkbox"/> Ruined Shale Packer
Initial Open <u>30</u>	<input type="checkbox"/> Shale Packer	<input type="checkbox"/> Ruined Packer
Initial Shut-In <u>60</u>	<input type="checkbox"/> Extra Packer	<input type="checkbox"/> Extra Copies
Final Flow <u>30</u>	<input type="checkbox"/> Extra Recorder	Sub Total <u>0</u>
Final Shut-In <u>60</u>	<input type="checkbox"/> Day Standby	Total <u>1555.60</u>
	<input type="checkbox"/> Accessibility	MP/DST Disc't
	Sub Total <u>1555.60</u>	

Approved By _____ Our Representative Phillip Long Thank You
 Trilobite Testing Inc. shall not be liable for damaged of any kind of the property or personnel of the one for whom a test is made, or for any loss suffered or sustained, directly or indirectly, through the use of its equipment, or its statements or opinion concerning the results of any test, tools lost or damaged in the hole shall be paid for at cost by the party for whom the test is made.



TRILOBITE TESTING INC.

1515 Commerce Parkway • Hays, Kansas 67601

Test Ticket

NO. 60720

4/10

Well Name & No. Kingsley #5 Test No. 5 Date 10-28-14
 Company Core Oil Company Elevation 2170 KB 2162 GL
 Address 202 S St Francis P.O. Box 2757 Wichita, KS 67202
 Co. Rep / Geo. Chuck Schmutz Rig Maverick 102
 Location: Sec. 17 Twp. 14S Rge. 20W Co. Ellis State KS

Interval Tested 3804 - 3846 Zone Tested Reagan Sand
 Anchor Length 42' Drill Pipe Run 368 Mud Wt. 9.2
 Top Packer Depth 3799 Drill Collars Run 120 Vis 48
 Bottom Packer Depth 3804 Wt. Pipe Run 0 WL 9.2
 Total Depth 3846 Chlorides 5,000 ppm System LCM 1 1/2#

Blow Description IF- BOB in 1 min.
ISI- No Return
FF- BOB in 1 min.
FSI- No Return.

Rec	Feet of	%gas	%oil	%water	%mud
<u>1638'</u>	<u>SNCW</u>		<u>90</u>	<u>10</u>	
<u>3151'</u>	<u>MCW</u>		<u>80</u>	<u>20</u>	
<u>645'</u>	<u>MCW</u>		<u>50</u>	<u>50</u>	
Rec	Feet of	%gas	%oil	%water	%mud
Rec	Feet of	%gas	%oil	%water	%mud

Rec Total ~~2598~~ 2598 BHT 123 Gravity — API RW +28 @ 41 °F Chlorides 7,000 ppm
 (A) Initial Hydrostatic 1950 Test 1150 T-On Location 14.08
 (B) First Initial Flow 395' Jars 250 T-Started 14.10
 (C) First Final Flow 987 Safety Joint 75 T-Open 16.54
 (D) Initial Shut-In 1,186 Circ Sub _____ T-Pulled 18.54
 (E) Second Initial Flow 971 Hourly Standby _____ T-Out 21.54
 (F) Second Final Flow 1,165 Mileage 52 RT x 2 Comments Loaded Tools
 (G) Final Shut-In 1,187 Sampler _____ 80.60+80.60 on 10-29-14 at 10:30am
 (H) Final Hydrostatic 1,885 Straddle _____
 Shale Packer _____
 Shale Packer _____
 Extra Packer _____
 Extra Recorder _____
 Day Standby _____
 Accessibility _____

Initial Open 30
 Initial Shut-In 0030
 Final Flow 30
 Final Shut-In 30
 Sub Total 1636.20
 Total 1636.20
 MP/DST Disc't _____

Approved By _____ Our Representative Phillip Long Ray Hank Lee

Trilobite Testing Inc. shall not be liable for damaged of any kind of the property or personnel of the one for whom a test is made, or for any loss suffered or sustained, directly or indirectly, through the use of its equipment, or its statements or opinion concerning the results of any test, tools lost or damaged in the hole shall be paid for at cost by the party for whom the test is made.