



**TRILOBITE TESTING, INC.**

# DRILL STEM TEST REPORT

McElvain Energy Inc  
 1050 17th St  
 STE 2500  
 Denver Co 80265-2080  
 ATTN: Jim McKinney, Rodney

**3-12s-21w Trego**  
**Spalsbury 3-2#1**  
 Job Ticket: 61135 **DST#: 2**  
 Test Start: 2014.12.15 @ 14:40:12

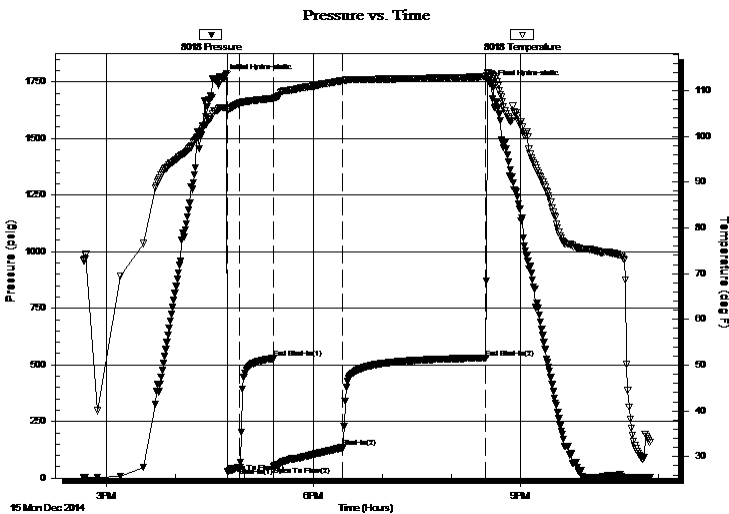
## GENERAL INFORMATION:

Formation: **LKC C-F**  
 Deviated: No Whipstock: ft (KB)  
 Test Type: Conventional Bottom Hole (Reset)  
 Time Tool Opened: 16:45:37 Tester: Ray Schwager  
 Time Test Ended: 22:53:06 Unit No: 70  
 Interval: **3635.00 ft (KB) To 3716.00 ft (KB) (TVD)** Reference Elevations: 2315.00 ft (KB)  
 Total Depth: 3716.00 ft (KB) (TVD) 2305.00 ft (CF)  
 Hole Diameter: 7.85 inches Hole Condition: Fair KB to GR/CF: 10.00 ft

**Serial #: 8018 Inside**  
 Press @ Run Depth: 134.89 psig @ 3637.00 ft (KB) Capacity: 8000.00 psig  
 Start Date: 2014.12.15 End Date: 2014.12.15 Last Calib.: 2014.12.15  
 Start Time: 14:40:12 End Time: 22:53:06 Time On Btm: 2014.12.15 @ 16:42:07  
 Time Off Btm: 2014.12.15 @ 20:34:36

**TEST COMMENT:** 10-IFP-w k to a fr bl 1/2" to 6" bl  
 30-ISIP-no bl  
 60-FFP-w k to a strg bl in 40 min , BOB  
 120-FSIP-surface bl bk

## PRESSURE SUMMARY



Time (Min.)	Pressure (psig)	Temp (deg F)	Annotation
0	1766.19	106.28	Initial Hydro-static
4	27.36	105.97	Open To Flow (1)
14	48.23	107.26	Shut-In(1)
43	528.35	108.28	End Shut-In(1)
44	53.08	108.22	Open To Flow (2)
104	134.89	112.17	Shut-In(2)
228	530.62	113.04	End Shut-In(2)
233	1739.97	113.61	Final Hydro-static

## Recovery

Length (ft)	Description	Volume (bbl)
250.00	GIP	3.51
125.00	HO&GCM 10%G35%O55%M	1.75
130.00	O&GCM 10%G10%O80%M	1.82

\* Recovery from multiple tests

## Gas Rates

Choke (inches)	Pressure (psig)	Gas Rate (Mcf/d)





**TRILOBITE  
TESTING, INC.**

# DRILL STEM TEST REPORT

**FLUID SUMMARY**

McElvain Energy Inc

**3-12s-21w Trego**

1050 17th St  
STE 2500  
Denver Co 80265-2080  
ATTN: Jim McKinney, Rodney

**Spalsbury 3-2#1**

Job Ticket: 61135

**DST#: 2**

Test Start: 2014.12.15 @ 14:40:12

## Mud and Cushion Information

Mud Type: Gel Chem  
Mud Weight: 9.00 lb/gal  
Viscosity: 53.00 sec/qt  
Water Loss: 7.38 in<sup>3</sup>  
Resistivity: ohm.m  
Salinity: 2700.00 ppm  
Filter Cake: 1.00 inches

Cushion Type:  
Cushion Length: ft  
Cushion Volume: bbl  
Gas Cushion Type:  
Gas Cushion Pressure: psig

Oil API: deg API  
Water Salinity: ppm

## Recovery Information

Recovery Table

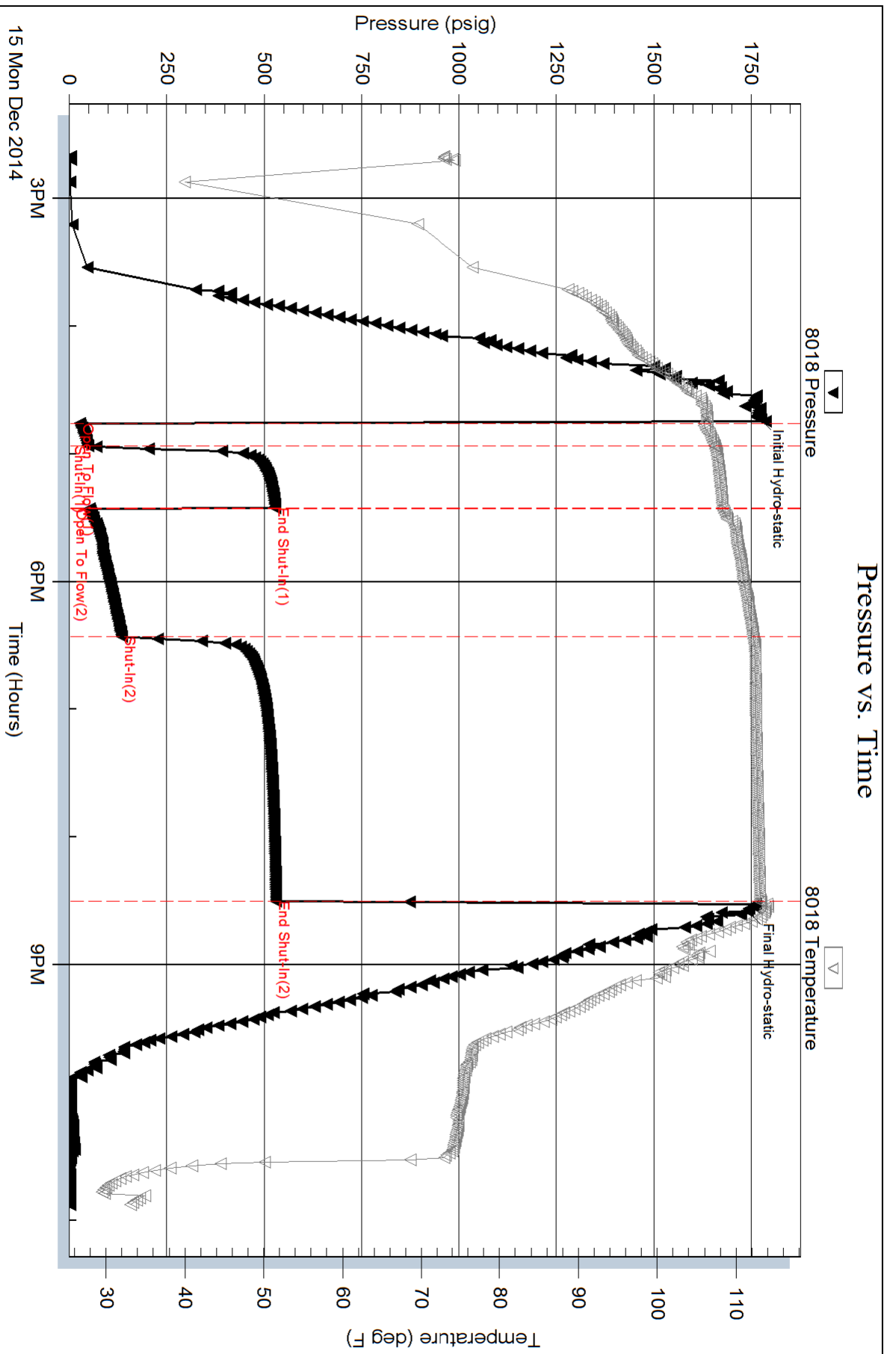
Length ft	Description	Volume bbl
250.00	GIP	3.507
125.00	HO&GCM 10%G35%O55%M	1.753
130.00	O&GCM 10%G10%O80%M	1.824

Total Length: 505.00 ft      Total Volume: 7.084 bbl

Num Fluid Samples: 0      Num Gas Bombs: 0      Serial #:

Laboratory Name:      Laboratory Location:

Recovery Comments: Sampler Data: PSI 170 # 200ML Gas 700 ML Oil 1100ML mud



Serial #: 8374

Fluid

McElvain Energy Inc

Spalsbury 3-2#1

DST Test Number: 2

