



DRILL STEM TEST REPORT

Prepared For: **American Warrior Inc.**

PO Box 399
Garden City KS 67846

ATTN: Jason T Alm

Schniepp-Anslover #1

33-18s-21w Ness,KS

Start Date: 2014.11.25 @ 03:45:00

End Date: 2014.11.25 @ 10:00:00

Job Ticket #: 60413 DST #: 1

Trilobite Testing, Inc
1515 Commerce Parkway Hays, KS 67601
ph: 785-625-4778 fax: 785-625-5620

Printed: 2014.11.26 @ 14:07:23



**TRILOBITE
TESTING, INC**

DRILL STEM TEST REPORT

American Warrior Inc.
PO Box 399
Garden City KS 67846
ATTN: Jason T Alm

33-18s-21w Ness, KS
Schniepp-Anslover #1
Job Ticket: 60413 **DST#: 1**
Test Start: 2014.11.25 @ 03:45:00

GENERAL INFORMATION:

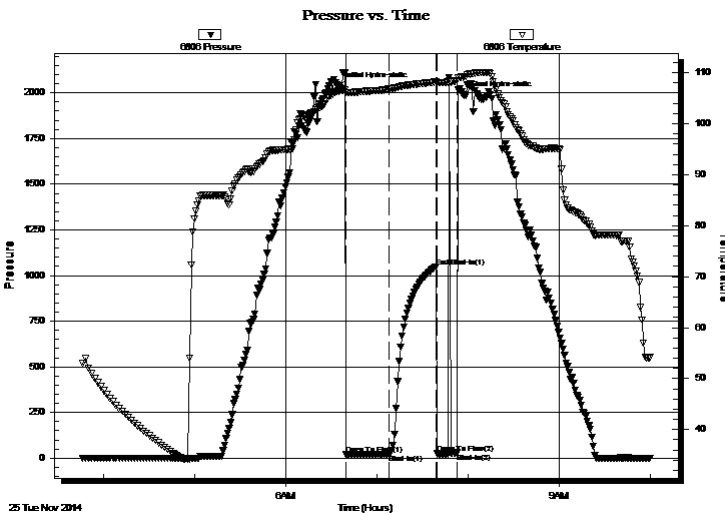
Formation: **Mississippian**
Deviated: No Whipstock: ft (KB)
Time Tool Opened: 06:39:30
Time Test Ended: 10:00:00
Test Type: Conventional Bottom Hole (Initial)
Tester: Shane Konzem
Unit No: S3
Interval: **4212.00 ft (KB) To 4220.00 ft (KB) (TVD)**
Reference Elevations: 2123.00 ft (KB)
Total Depth: 4220.00 ft (KB) (TVD) 2115.00 ft (CF)
Hole Diameter: 7.88 inches Hole Condition: Fair KB to GR/CF: 8.00 ft

Serial #: 6806

Inside

Press@RunDepth: 22.93 psig @ 4216.00 ft (KB) Capacity: 8000.00 psig
Start Date: 2014.11.25 End Date: 2014.11.25 Last Calib.: 2014.11.25
Start Time: 03:46:00 End Time: 10:00:00 Time On Btm: 2014.11.25 @ 06:34:30
Time Off Btm: 2014.11.25 @ 07:57:30

TEST COMMENT: IFP 30 Minutes. Weak blow built to 1 1/2"
ISI 30 Minutes. No blow back.
FFP 10 Minutes. Weak surface blow, flushed tool, had good flush bubble and remained at weak surface blow. Pulled test per Geo.



PRESSURE SUMMARY

Time (Min.)	Pressure (psig)	Temp (deg F)	Annotation
0	2036.74	106.38	Initial Hydro-static
5	18.98	106.08	Open To Flow (1)
34	22.93	106.80	Shut-In(1)
64	1047.57	108.20	End Shut-In(1)
65	24.11	108.02	Open To Flow (2)
78	28.90	108.51	Shut-In(2)
83	1987.75	109.22	Final Hydro-static

Recovery

Length (ft)	Description	Volume (bbl)
5.00	100% mud	0.02

Gas Rates

	Choke (inches)	Pressure (psig)	Gas Rate (Mcf/d)



**TRILOBITE
TESTING, INC**

DRILL STEM TEST REPORT

American Warrior Inc.
PO Box 399
Garden City KS 67846
ATTN: Jason T Alm

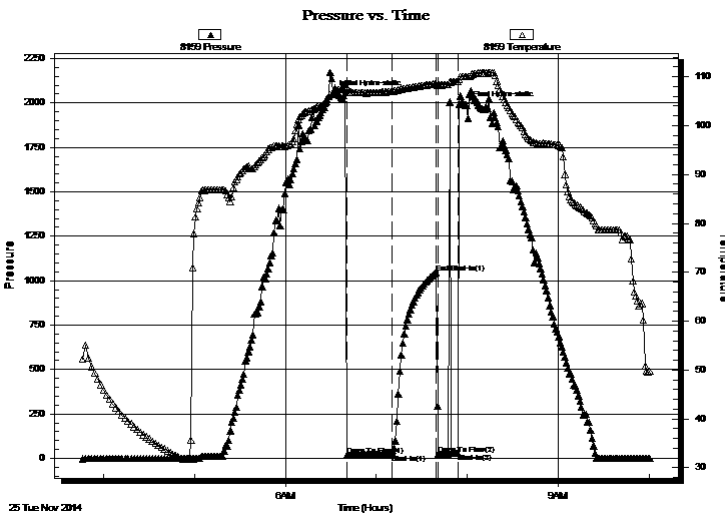
33-18s-21w Ness,KS
Schniepp-Anslover #1
Job Ticket: 60413 **DST#: 1**
Test Start: 2014.11.25 @ 03:45:00

GENERAL INFORMATION:

Formation: **Mississippian**
Deviated: No Whipstock: ft (KB)
Time Tool Opened: 06:39:30
Time Test Ended: 10:00:00
Interval: **4212.00 ft (KB) To 4220.00 ft (KB) (TVD)**
Total Depth: 4220.00 ft (KB) (TVD)
Hole Diameter: 7.88 inches Hole Condition: Fair
Test Type: Conventional Bottom Hole (Initial)
Tester: Shane Konzem
Unit No: S3
Reference Elevations: 2123.00 ft (KB)
2115.00 ft (CF)
KB to GR/CF: 8.00 ft

Serial #: 8159 Outside
Press@RunDepth: 1046.05 psig @ 4217.00 ft (KB) Capacity: 8000.00 psig
Start Date: 2014.11.25 End Date: 2014.11.25 Last Calib.: 2014.11.25
Start Time: 03:46:00 End Time: 10:01:00 Time On Btm: 2014.11.25 @ 06:31:30
Time Off Btm: 2014.11.25 @ 07:59:00

TEST COMMENT: IFP 30 Minutes. Weak blow built to 1 1/2"
ISI 30 Minutes. No blow back.
FFP 10 Minutes. Weak surface blow, flushed tool, had good flush bubble and remained at weak surface blow. Pulled test per Geo.



PRESSURE SUMMARY

Time (Min.)	Pressure (psig)	Temp (deg F)	Annotation
0	2048.48	106.76	Initial Hydro-static
9	17.46	106.90	Open To Flow (1)
39	22.49	107.00	Shut-In(1)
68	1046.05	108.57	End Shut-In(1)
70	24.34	108.31	Open To Flow (2)
83	28.46	108.97	Shut-In(2)
88	1987.65	110.10	Final Hydro-static

Recovery

Length (ft)	Description	Volume (bbl)
5.00	100% mud	0.02

Gas Rates

	Choke (inches)	Pressure (psig)	Gas Rate (Mcf/d)



**TRILOBITE
TESTING, INC**

DRILL STEM TEST REPORT

TOOL DIAGRAM

American Warrior Inc.
PO Box 399
Garden City KS 67846
ATTN: Jason T Alm

33-18s-21w Ness, KS
Schniepp-Anslover #1
Job Ticket: 60413 **DST#: 1**
Test Start: 2014.11.25 @ 03:45:00

Tool Information

Drill Pipe:	Length: 4182.00 ft	Diameter: 3.80 inches	Volume: 58.66 bbl	Tool Weight: 2000.00 lb
Heavy Wt. Pipe:	Length: 0.00 ft	Diameter: 0.00 inches	Volume: 0.00 bbl	Weight set on Packer: 20000.00 lb
Drill Collar:	Length: 31.35 ft	Diameter: 2.25 inches	Volume: 0.15 bbl	Weight to Pull Loose: 70000.00 lb
		Total Volume: 58.81 bbl		Tool Chased 0.00 ft
Drill Pipe Above KB:	29.35 ft			String Weight: Initial 58000.00 lb
Depth to Top Packer:	4212.00 ft			Final 58000.00 lb
Depth to Bottom Packer:	ft			
Interval between Packers:	8.00 ft			
Tool Length:	36.00 ft			
Number of Packers:	2	Diameter: 6.75 inches		

Tool Comments:

Tool Description	Length (ft)	Serial No.	Position	Depth (ft)	Accum. Lengths
------------------	-------------	------------	----------	------------	----------------

Shut-In Tool	5.00			4189.00	
Hydraulic tool	5.00			4194.00	
Jars	6.00			4200.00	
Safety Joint	2.00			4202.00	
Top Packer	5.00			4207.00	
Packer	5.00			4212.00	28.00 Bottom Of Top Packer
Anchor	3.00			4215.00	
Recorder	1.00	6806	Inside	4216.00	
Recorder	1.00	8159	Outside	4217.00	
Bull Plug	3.00			4220.00	8.00 Anchor Tool
Total Tool Length:	36.00				



**TRILOBITE
TESTING, INC**

DRILL STEM TEST REPORT

FLUID SUMMARY

American Warrior Inc.

33-18s-21w Ness,KS

PO Box 399
Garden City KS 67846

Schniepp-Anslover #1

Job Ticket: 60413 **DST#: 1**

ATTN: Jason T Alm

Test Start: 2014.11.25 @ 03:45:00

Mud and Cushion Information

Mud Type: Gel Chem	Cushion Type:	Oil API:	deg API
Mud Weight: 9.00 lb/gal	Cushion Length: ft	Water Salinity:	ppm
Viscosity: 48.00 sec/qt	Cushion Volume: bbl		
Water Loss: 8.76 in ³	Gas Cushion Type:		
Resistivity: ohm.m	Gas Cushion Pressure: psig		
Salinity: 8000.00 ppm			
Filter Cake: 1.00 inches			

Recovery Information

Recovery Table

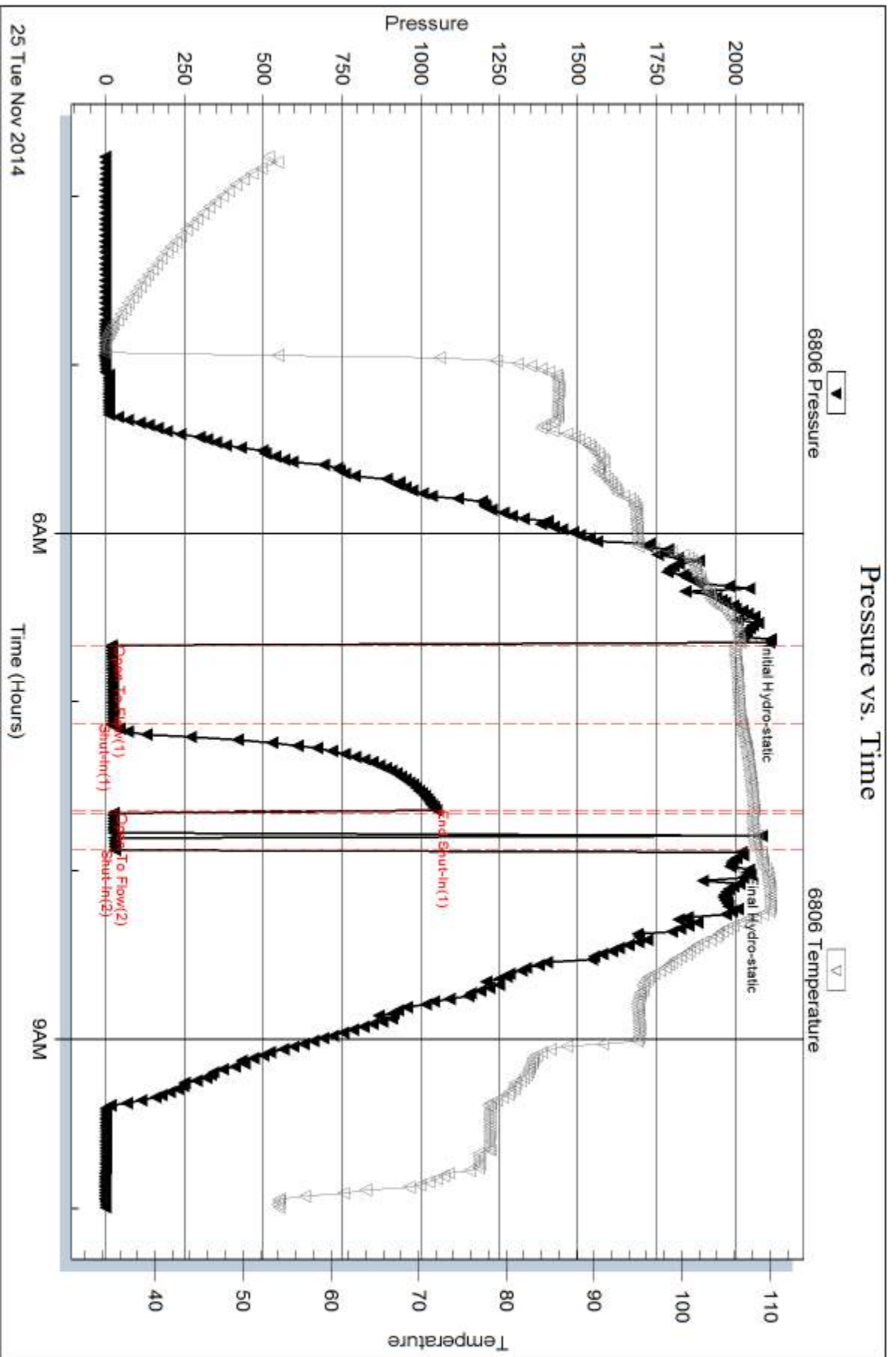
Length ft	Description	Volume bbl
5.00	100% mud	0.025

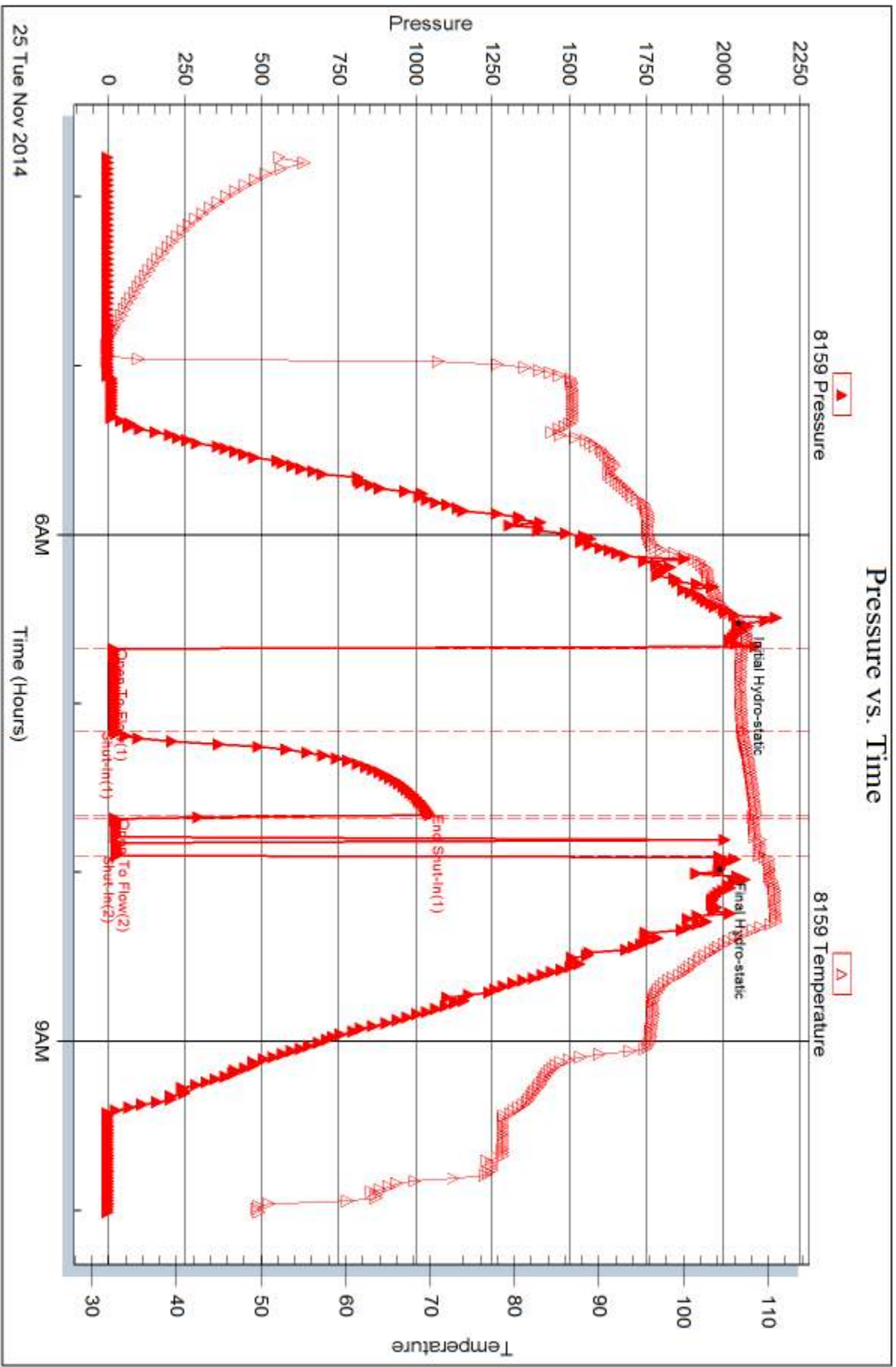
Total Length: 5.00 ft Total Volume: 0.025 bbl

Num Fluid Samples: 0 Num Gas Bombs: 0 Serial #:

Laboratory Name: Laboratory Location:

Recovery Comments:







DRILL STEM TEST REPORT

Prepared For: **American Warrior Inc.**

PO Box 399
Garden City KS 67846

ATTN: Jason T Alm

Schniepp-Anslover #1

33-18s-21w Ness,KS

Start Date: 2014.11.25 @ 16:08:00

End Date: 2014.11.25 @ 22:02:30

Job Ticket #: 60414 DST #: 2

Trilobite Testing, Inc
1515 Commerce Parkway Hays, KS 67601
ph: 785-625-4778 fax: 785-625-5620

Printed: 2014.11.26 @ 14:06:58



**TRILOBITE
TESTING, INC**

DRILL STEM TEST REPORT

American Warrior Inc.
PO Box 399
Garden City KS 67846
ATTN: Jason T Alm

33-18s-21w Ness,KS
Schniepp-Anslover #1
Job Ticket: 60414 **DST#: 2**
Test Start: 2014.11.25 @ 16:08:00

GENERAL INFORMATION:

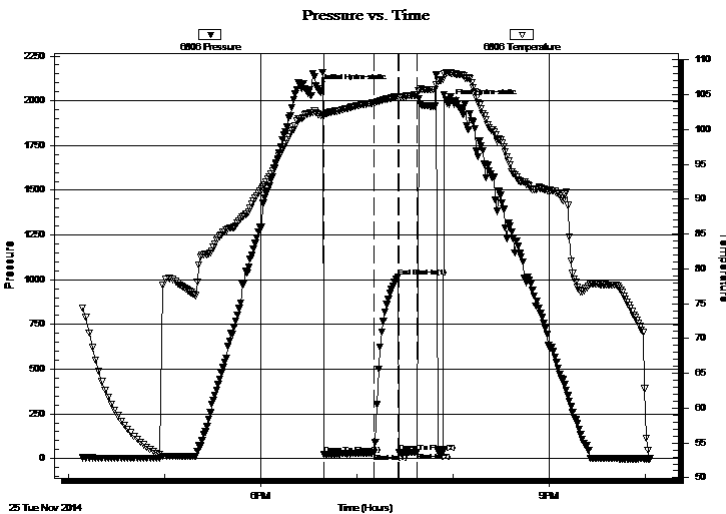
Formation: **Mississippian**
Deviated: No Whipstock: ft (KB)
Time Tool Opened: 18:39:30
Time Test Ended: 22:02:30
Interval: **4213.00 ft (KB) To 4225.00 ft (KB) (TVD)**
Total Depth: 4225.00 ft (KB) (TVD)
Hole Diameter: 7.88 inches Hole Condition: Fair
Test Type: Conventional Bottom Hole (Initial)
Tester: Shane Konzem
Unit No: S3
Reference Elevations: 2123.00 ft (KB)
2115.00 ft (CF)
KB to GR/CF: 8.00 ft

Serial #: 6806

Inside

Press@RunDepth: 31.36 psig @ 4221.00 ft (KB) Capacity: 8000.00 psig
Start Date: 2014.11.25 End Date: 2014.11.25 Last Calib.: 2014.11.25
Start Time: 16:09:00 End Time: 22:02:30 Time On Btm: 2014.11.25 @ 18:35:30
Time Off Btm: 2014.11.25 @ 19:57:30

TEST COMMENT: IFP 30 Minutes. Weak blow built to 1"
ISI 15 Minutes. No blow back.
FFP 10 Minutes. Weak surface blow, flushed tool had good flush bubbles blow remained weak surface blow. Pulled test per Geo



PRESSURE SUMMARY

Time (Min.)	Pressure (psig)	Temp (deg F)	Annotation
0	2068.25	102.21	Initial Hydro-static
4	23.72	101.96	Open To Flow (1)
35	31.36	103.84	Shut-In(1)
50	1014.94	104.74	End Shut-In(1)
51	32.92	104.58	Open To Flow (2)
62	36.53	105.00	Shut-In(2)
82	1981.95	108.20	Final Hydro-static

Recovery

Length (ft)	Description	Volume (bbl)
33.00	100% mud	0.18

Gas Rates

	Choke (inches)	Pressure (psig)	Gas Rate (Mcf/d)



**TRILOBITE
TESTING, INC**

DRILL STEM TEST REPORT

American Warrior Inc.
PO Box 399
Garden City KS 67846
ATTN: Jason T Alm

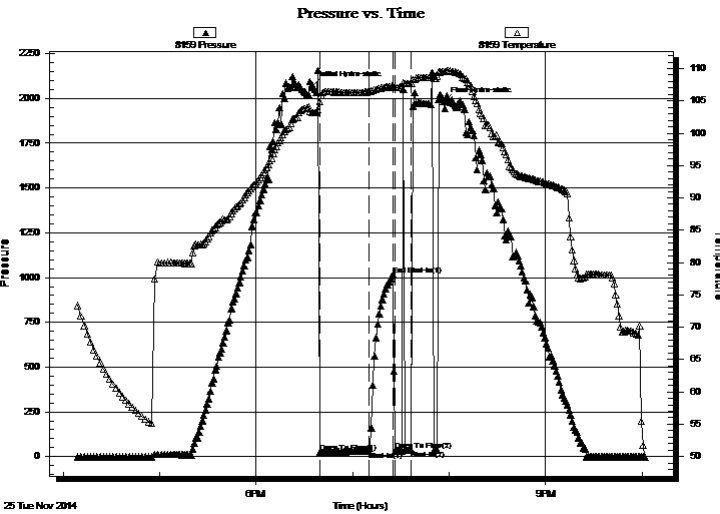
33-18s-21w Ness,KS
Schniepp-Anslover #1
Job Ticket: 60414 **DST#: 2**
Test Start: 2014.11.25 @ 16:08:00

GENERAL INFORMATION:

Formation: **Mississippian**
Deviated: No Whipstock: ft (KB) Test Type: Conventional Bottom Hole (Initial)
Time Tool Opened: 18:39:30 Tester: Shane Konzem
Time Test Ended: 22:02:30 Unit No: S3
Interval: 4213.00 ft (KB) To 4225.00 ft (KB) (TVD) Reference Elevations: 2123.00 ft (KB)
Total Depth: 4225.00 ft (KB) (TVD) 2115.00 ft (CF)
Hole Diameter: 7.88 inches Hole Condition: Fair KB to GR/CF: 8.00 ft

Serial #: 8159 Outside
Press@RunDepth: 1016.48 psig @ 4222.00 ft (KB) Capacity: 8000.00 psig
Start Date: 2014.11.25 End Date: 2014.11.25 Last Calib.: 2014.11.25
Start Time: 16:09:00 End Time: 22:02:00 Time On Btm: 2014.11.25 @ 18:35:00
Time Off Btm: 2014.11.25 @ 19:56:30

TEST COMMENT: IFP 30 Minutes. Weak blow built to 1"
ISI 15 Minutes. No blow back.
FFP 10 Minutes. Weak surface blow, flushed tool had good flush bubbles blow remained weak surface blow. Pulled test per Geo



PRESSURE SUMMARY

Time (Min.)	Pressure (psig)	Temp (deg F)	Annotation
0	2069.81	103.19	Initial Hydro-static
5	22.81	104.85	Open To Flow (1)
35	31.03	106.42	Shut-In(1)
50	1016.48	107.33	End Shut-In(1)
52	32.49	107.06	Open To Flow (2)
62	36.05	107.73	Shut-In(2)
82	1983.97	109.56	Final Hydro-static

Recovery

Length (ft)	Description	Volume (bbl)
33.00	100% mud	0.18

Gas Rates

Choke (inches)	Pressure (psig)	Gas Rate (Mcf/d)



**TRILOBITE
TESTING, INC**

DRILL STEM TEST REPORT

TOOL DIAGRAM

American Warrior Inc.

33-18s-21w Ness, KS

PO Box 399
Garden City KS 67846

Schniepp-Anslover #1

Job Ticket: 60414

DST#: 2

ATTN: Jason T Alm

Test Start: 2014.11.25 @ 16:08:00

Tool Information

Drill Pipe:	Length: 4184.00 ft	Diameter: 3.80 inches	Volume: 58.69 bbl	Tool Weight: 2000.00 lb
Heavy Wt. Pipe:	Length: 0.00 ft	Diameter: 0.00 inches	Volume: 0.00 bbl	Weight set on Packer: 20000.00 lb
Drill Collar:	Length: 31.35 ft	Diameter: 2.25 inches	Volume: 0.15 bbl	Weight to Pull Loose: 66000.00 lb
		Total Volume: 58.84 bbl		Tool Chased 0.50 ft
Drill Pipe Above KB:	30.35 ft			String Weight: Initial 58000.00 lb
Depth to Top Packer:	4213.00 ft			Final 58000.00 lb
Depth to Bottom Packer:	ft			
Interval between Packers:	12.00 ft			
Tool Length:	40.00 ft			
Number of Packers:	2	Diameter: 6.75 inches		

Tool Comments: Upon pulling test found a loose connection on head equipment tightened connection and set tool on bottom again to ensure valid blows on test. Had a weak surface blow upon reopening tool. pulled test after three minutes.

Tool Description	Length (ft)	Serial No.	Position	Depth (ft)	Accum. Lengths
Shut-In Tool	5.00			4190.00	
Hydraulic tool	5.00			4195.00	
Jars	6.00			4201.00	
Safety Joint	2.00			4203.00	
Top Packer	5.00			4208.00	
Packer	5.00			4213.00	28.00 Bottom Of Top Packer
Anchor	7.00			4220.00	
Recorder	1.00	6806	Inside	4221.00	
Recorder	1.00	8159	Outside	4222.00	
Bull Plug	3.00			4225.00	12.00 Anchor Tool
Total Tool Length:	40.00				



**TRILOBITE
TESTING, INC**

DRILL STEM TEST REPORT

FLUID SUMMARY

American Warrior Inc.

33-18s-21w Ness,KS

PO Box 399
Garden City KS 67846

Schniepp-Anslover #1

Job Ticket: 60414 **DST#: 2**

ATTN: Jason T Alm

Test Start: 2014.11.25 @ 16:08:00

Mud and Cushion Information

Mud Type: Gel Chem	Cushion Type:	Oil API:	deg API
Mud Weight: 9.00 lb/gal	Cushion Length: ft	Water Salinity:	ppm
Viscosity: 48.00 sec/qt	Cushion Volume: bbl		
Water Loss: 8.77 in ³	Gas Cushion Type:		
Resistivity: ohm.m	Gas Cushion Pressure: psig		
Salinity: 8000.00 ppm			
Filter Cake: 1.00 inches			

Recovery Information

Recovery Table

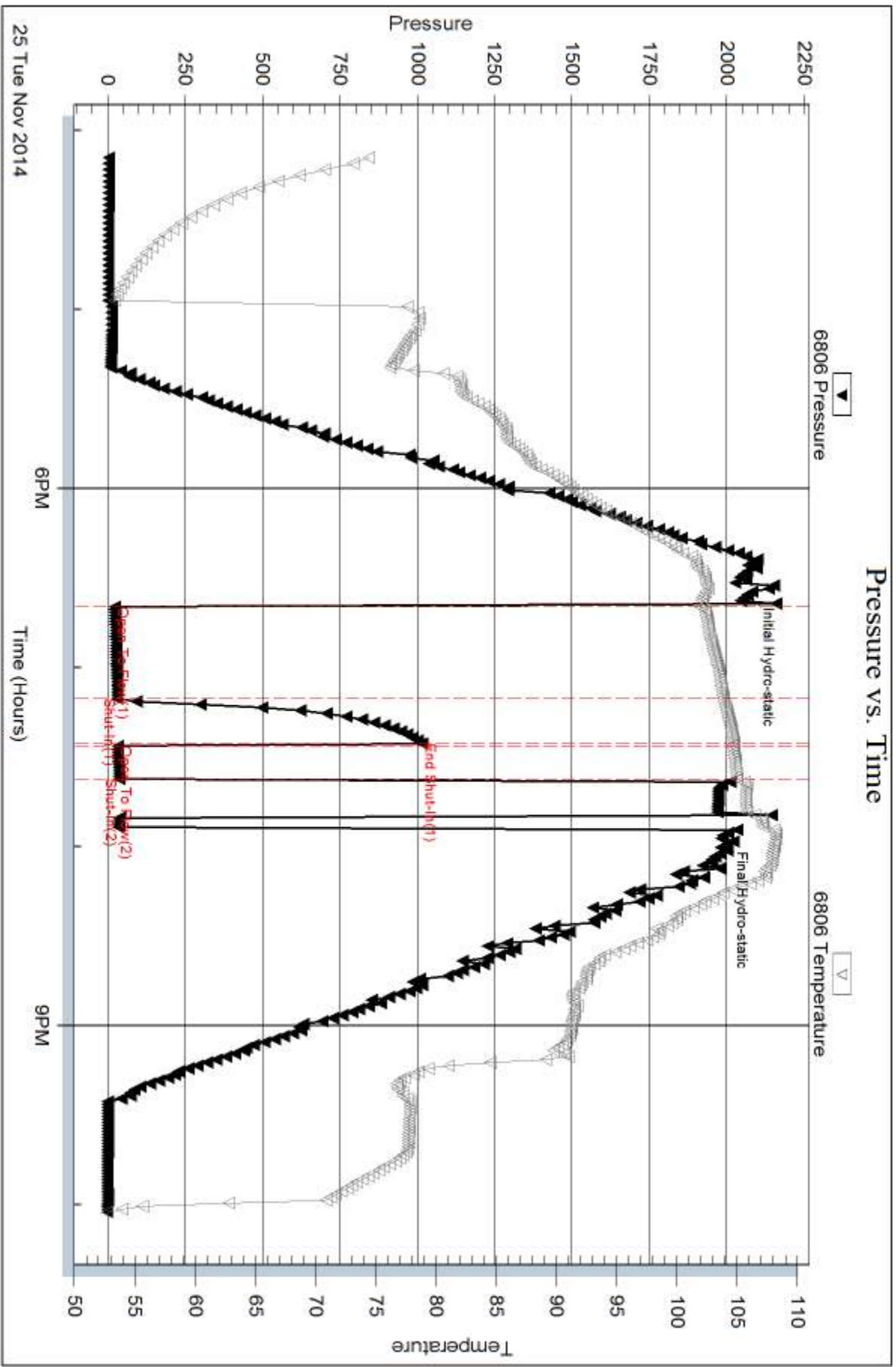
Length ft	Description	Volume bbl
33.00	100% mud	0.177

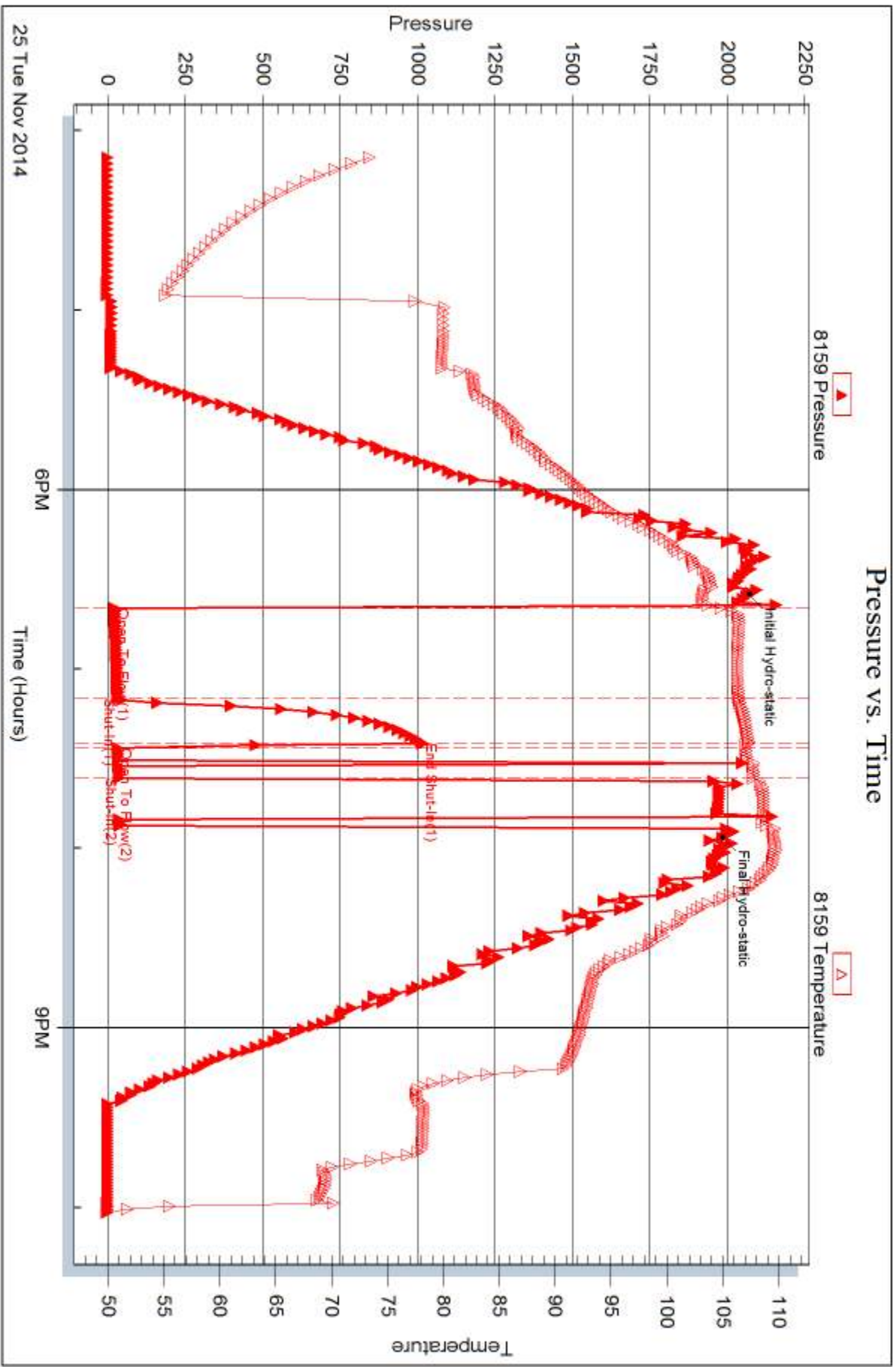
Total Length: 33.00 ft Total Volume: 0.177 bbl

Num Fluid Samples: 0 Num Gas Bombs: 0 Serial #:

Laboratory Name: Laboratory Location:

Recovery Comments:







DRILL STEM TEST REPORT

Prepared For: **American Warrior Inc.**

PO Box 399
Garden City KS 67846

ATTN: Jason T Alm

Schniepp-Anslover #1

33-18s-21w Ness,KS

Start Date: 2014.11.26 @ 03:40:00

End Date: 2014.11.26 @ 10:33:00

Job Ticket #: 60415 DST #: 3

Trilobite Testing, Inc
1515 Commerce Parkway Hays, KS 67601
ph: 785-625-4778 fax: 785-625-5620

Printed: 2014.11.26 @ 14:06:21



TRILOBITE TESTING, INC

DRILL STEM TEST REPORT

American Warrior Inc.
 PO Box 399
 Garden City KS 67846
 ATTN: Jason T Alm

33-18s-21w Ness, KS
Schniepp-Anslover #1
 Job Ticket: 60415 **DST#: 3**
 Test Start: 2014.11.26 @ 03:40:00

GENERAL INFORMATION:

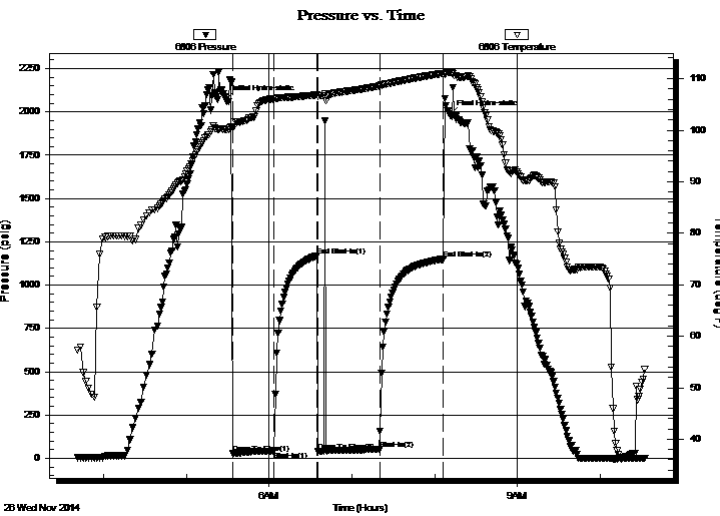
Formation: **Mississippian**
 Deviated: No Whipstock: ft (KB)
 Time Tool Opened: 05:33:30
 Time Test Ended: 10:33:00
 Interval: **4214.00 ft (KB) To 4230.00 ft (KB) (TVD)**
 Total Depth: 4230.00 ft (KB) (TVD)
 Hole Diameter: 7.88 inches Hole Condition: Fair
 Test Type: Conventional Bottom Hole (Initial)
 Tester: Shane Konzem
 Unit No: S3
 Reference Elevations: 2123.00 ft (KB)
 2115.00 ft (CF)
 KB to GR/CF: 8.00 ft

Serial #: 6806

Inside

Press@RunDepth: 53.11 psig @ 4226.00 ft (KB) Capacity: 8000.00 psig
 Start Date: 2014.11.26 End Date: 2014.11.26 Last Calib.: 2014.11.26
 Start Time: 03:41:00 End Time: 10:33:00 Time On Btm: 2014.11.26 @ 05:28:30
 Time Off Btm: 2014.11.26 @ 08:11:30

TEST COMMENT: IFP 30 minutes Weak blow built to 2"
 ISI 30 minutes No blow back.
 FFP 45 minutes Weak surface blow, flushed tool, weak blow built to 2" by end of open.
 FSI 45 minutes No blow back.



PRESSURE SUMMARY

Time (Min.)	Pressure (psig)	Temp (deg F)	Annotation
0	2070.34	100.12	Initial Hydro-static
5	26.73	100.49	Open To Flow (1)
35	40.68	106.03	Shut-In(1)
66	1168.04	106.83	End Shut-In(1)
67	41.33	106.62	Open To Flow (2)
112	53.11	108.58	Shut-In(2)
158	1150.64	111.03	End Shut-In(2)
163	1981.71	111.21	Final Hydro-static

Recovery

Length (ft)	Description	Volume (bbl)
65.00	100% Mud	0.63

Gas Rates

Choke (inches)	Pressure (psig)	Gas Rate (Mcf/d)



**TRILOBITE
TESTING, INC**

DRILL STEM TEST REPORT

American Warrior Inc.
PO Box 399
Garden City KS 67846
ATTN: Jason T Alm

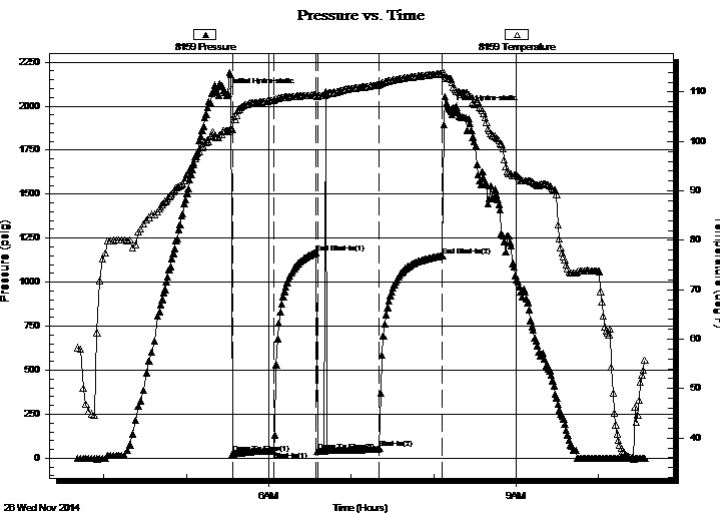
33-18s-21w Ness,KS
Schniepp-Anslover #1
Job Ticket: 60415 **DST#: 3**
Test Start: 2014.11.26 @ 03:40:00

GENERAL INFORMATION:

Formation: **Mississippian**
Deviated: No Whipstock: ft (KB)
Time Tool Opened: 05:33:30
Time Test Ended: 10:33:00
Interval: **4214.00 ft (KB) To 4230.00 ft (KB) (TVD)**
Total Depth: 4230.00 ft (KB) (TVD)
Hole Diameter: 7.88 inches Hole Condition: Fair
Test Type: Conventional Bottom Hole (Initial)
Tester: Shane Konzem
Unit No: S3
Reference Elevations: 2123.00 ft (KB)
2115.00 ft (CF)
KB to GR/CF: 8.00 ft

Serial #: 8159 Outside
Press@RunDepth: 1150.30 psig @ 4227.00 ft (KB) Capacity: 8000.00 psig
Start Date: 2014.11.26 End Date: 2014.11.26 Last Calib.: 2014.11.26
Start Time: 03:41:00 End Time: 10:33:30 Time On Btm: 2014.11.26 @ 05:28:30
Time Off Btm: 2014.11.26 @ 08:12:00

TEST COMMENT: IFP 30 minutes Weak blow built to 2"
ISI 30 minutes No blow back.
FFP 45 minutes Weak surface blow, flushed tool, weak blow built to 2" by end of open.
FSI 45 minutes No blow back.



PRESSURE SUMMARY

Time (Min.)	Pressure (psig)	Temp (deg F)	Annotation
0	2076.24	102.13	Initial Hydro-static
5	25.46	102.43	Open To Flow (1)
35	39.83	108.37	Shut-In(1)
66	1168.48	109.42	End Shut-In(1)
68	40.88	109.28	Open To Flow (2)
112	55.85	111.48	Shut-In(2)
158	1150.30	113.71	End Shut-In(2)
164	1981.36	112.68	Final Hydro-static

Recovery

Length (ft)	Description	Volume (bbl)
65.00	100% Mud	0.63

Gas Rates

	Choke (inches)	Pressure (psig)	Gas Rate (Mcf/d)



**TRILOBITE
TESTING, INC**

DRILL STEM TEST REPORT

TOOL DIAGRAM

American Warrior Inc.
PO Box 399
Garden City KS 67846
ATTN: Jason T Alm

33-18s-21w Ness,KS
Schniepp-Anslover #1
Job Ticket: 60415 **DST#: 3**
Test Start: 2014.11.26 @ 03:40:00

Tool Information

Drill Pipe:	Length: 4184.00 ft	Diameter: 3.80 inches	Volume: 58.69 bbl	Tool Weight: 2000.00 lb
Heavy Wt. Pipe:	Length: 0.00 ft	Diameter: 0.00 inches	Volume: 0.00 bbl	Weight set on Packer: 20000.00 lb
Drill Collar:	Length: 31.35 ft	Diameter: 2.25 inches	Volume: 0.15 bbl	Weight to Pull Loose: 70000.00 lb
			<u>Total Volume: 58.84 bbl</u>	Tool Chased 0.00 ft
Drill Pipe Above KB:	29.35 ft			String Weight: Initial 58000.00 lb
Depth to Top Packer:	4214.00 ft			Final 59000.00 lb
Depth to Bottom Packer:	ft			
Interval between Packers:	16.00 ft			
Tool Length:	44.00 ft			
Number of Packers:	2	Diameter: 6.75 inches		

Tool Comments:

Tool Description

Tool Description	Length (ft)	Serial No.	Position	Depth (ft)	Accum. Lengths
Shut-In Tool	5.00			4191.00	
Hydraulic tool	5.00			4196.00	
Jars	6.00			4202.00	
Safety Joint	2.00			4204.00	
Top Packer	5.00			4209.00	
Packer	5.00			4214.00	28.00 Bottom Of Top Packer
Anchor	11.00			4225.00	
Recorder	1.00	6806	Inside	4226.00	
Recorder	1.00	8159	Outside	4227.00	
Bull Plug	3.00			4230.00	16.00 Anchor Tool
Total Tool Length:	44.00				



**TRILOBITE
TESTING, INC**

DRILL STEM TEST REPORT

FLUID SUMMARY

American Warrior Inc.

33-18s-21w Ness,KS

PO Box 399
Garden City KS 67846

Schniepp-Anslover #1

Job Ticket: 60415 **DST#: 3**

ATTN: Jason T Alm

Test Start: 2014.11.26 @ 03:40:00

Mud and Cushion Information

Mud Type: Gel Chem

Cushion Type:

Oil API:

deg API

Mud Weight: 9.00 lb/gal

Cushion Length: ft

Water Salinity: ppm

Viscosity: 49.00 sec/qt

Cushion Volume: bbl

Water Loss: 1.00 in³

Gas Cushion Type:

Resistivity: ohm.m

Gas Cushion Pressure: psig

Salinity: 8000.00 ppm

Filter Cake: 0.00 inches

Recovery Information

Recovery Table

Length ft	Description	Volume bbl
65.00	100% Mud	0.626

Total Length: 65.00 ft Total Volume: 0.626 bbl

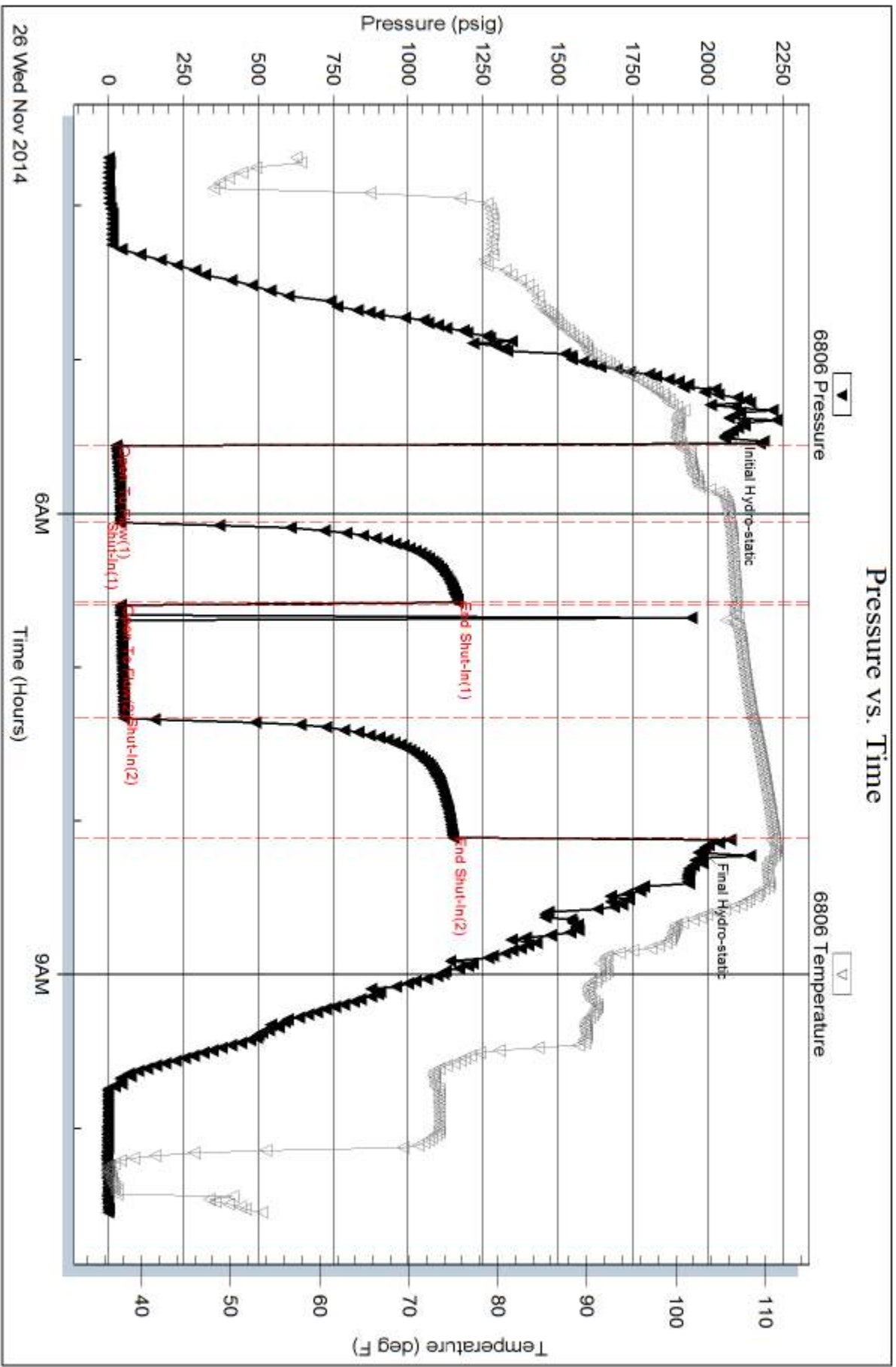
Num Fluid Samples: 0

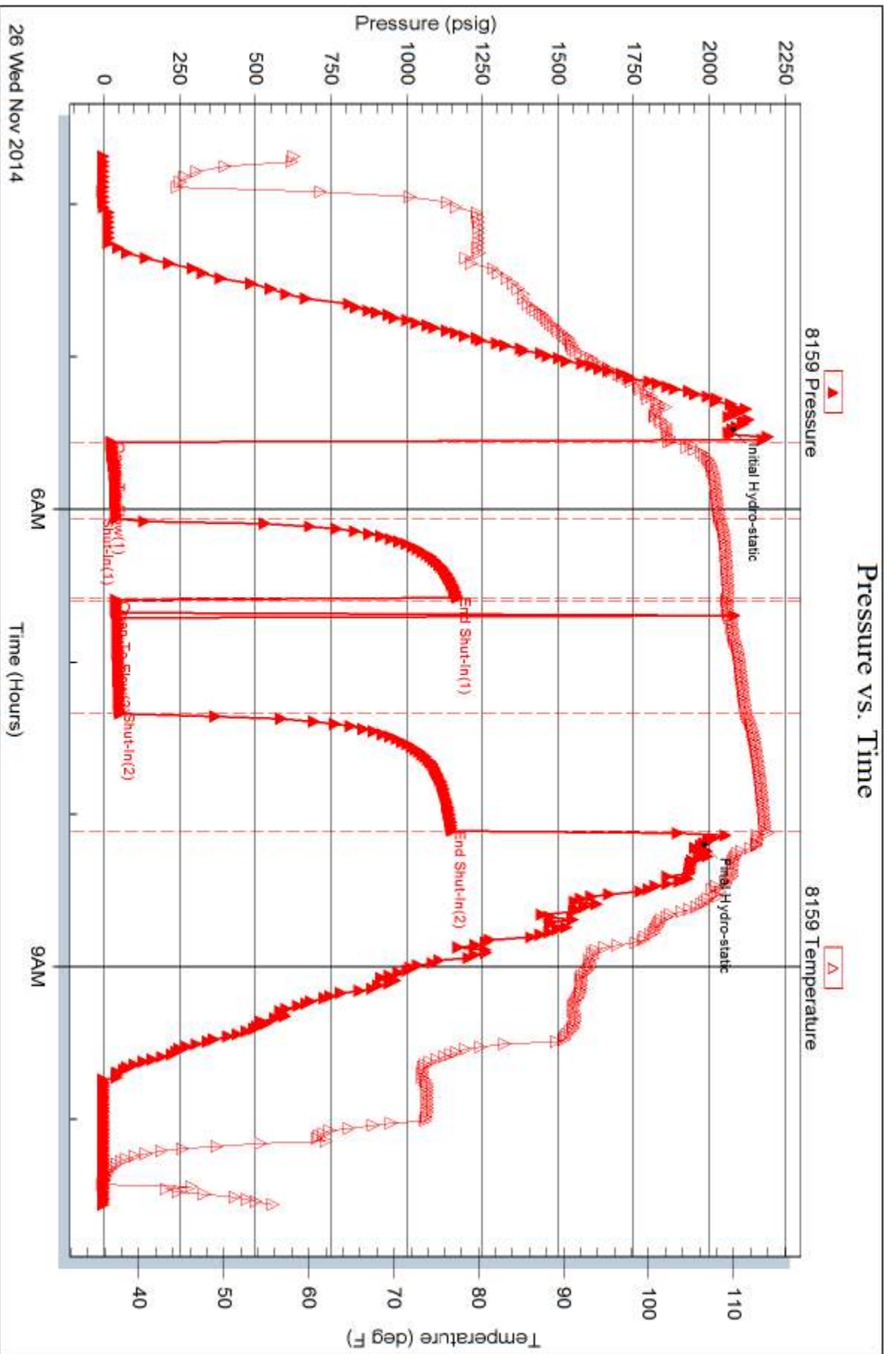
Num Gas Bombs: 0 Serial #:

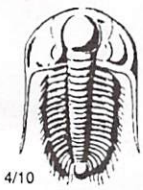
Laboratory Name:

Laboratory Location:

Recovery Comments:







TRILOBITE TESTING INC.

1515 Commerce Parkway • Hays, Kansas 67601

Test Ticket

NO. 60413

Well Name & No. Schniepp-Anslover Unit #1 Test No. 1 Date 11-25-14
 Company American Warrior Inc. Elevation 2123 KB 2115 GL
 Address 3118 Cummings Rd. P.O. Box 399 Garden City KS 67846
 Co. Rep / Geo. Jason T Alm Rig Discovery 3
 Location: Sec. 33 Twp. 18 S Rge. 21 W Co. Ness State KS

Interval Tested 4212 - 4220 Zone Tested Mississippian
 Anchor Length 8 Drill Pipe Run 4182 Mud Wt. 9.2
 Top Packer Depth 4207 Drill Collars Run 31.35 Vis 48
 Bottom Packer Depth 4212 Wt. Pipe Run 0 WL 8.8
 Total Depth 4220 Chlorides 8000 ppm System LCM 1#

Blow Description 1st open - weak blow built to 1 1/2 inches. 1st shut in - no blow back. 2nd open - weak surface blow. finished tool per Geo had good flush bubbles and blow remained weak surface blow. Pulled test per Geo

Rec	Feet of	%gas	%oil	%water	%mud
<u>5</u>	<u>mud</u>			<u>100</u>	

Rec Total 5 BHT _____ Gravity 1 API RW 1 @ 1 °F Chlorides 1 ppm

(A) Initial Hydrostatic 2036 Test 1250 T-On Location 0315
 (B) First Initial Flow 18 Jars 250 T-Started 0445
 (C) First Final Flow 22 Safety Joint 75 T-Open 0640
 (D) Initial Shut-In 1047 Circ Sub _____ T-Pulled 0750
 (E) Second Initial Flow 24 Hourly Standby _____ T-Out 0945
 (F) Second Final Flow 28 Mileage 102 158.10 Comments _____
 (G) Final Shut-In N/A Sampler _____
 (H) Final Hydrostatic 1987 Straddle _____ Ruined Shale Packer _____
 Shale Packer _____ Ruined Packer _____
 Extra Packer _____ Extra Copies _____
 Extra Recorder _____ Sub Total 0
 Day Standby _____ Total 1733.10
 Accessibility _____ MP/DST Disc't _____
 Sub Total 1733.10

Approved By _____ Our Representative [Signature]
 Trilobite Testing Inc. shall not be liable for damaged of any kind of the property or personnel of the one for whom a test is made, or for any loss suffered or sustained, directly or indirectly, through the use of its equipment, or its statements or opinion concerning the results of any test, tools lost or damaged in the hole shall be paid for at cost by the party for whom the test is made.



TRILOBITE TESTING INC.

1515 Commerce Parkway • Hays, Kansas 67601

Test Ticket

NO. 60414

Well Name & No. Schniepp - Anslorer Unit # 1 Test No. 2 Date 11-25-14
 Company American Warrior Inc. Elevation 2123 KB 2115 GL _____
 Address 3158 Cummings Rd. P.O. Box 399 Garden City KS 67846
 Co. Rep / Geo. Jason T Alm Rig Discovery 3
 Location: Sec. 33 Twp. 18s Rge. 21w Co. Ness State KS

Interval Tested 4213 - 4225 Zone Tested Mississippian
 Anchor Length 12 Drill Pipe Run 4184 Mud Wt. 9.2
 Top Packer Depth 4208 Drill Collars Run 31.35 Vis 48
 Bottom Packer Depth 4223 Wt. Pipe Run Ø WL 8.8
 Total Depth 4225 Chlorides 8000 ppm System LCM 1#
 Blow Description 1st Open - 1 inch weak blow. 1st shut in - No blow back. 2nd Open - weak surface blow; flushed had no improvement. Pulled test.

Rec	Feet of	%gas	%oil	%water	%mud
<u>33</u>	<u>mud</u>			<u>100</u>	
_____	_____				
_____	_____				
_____	_____				
_____	_____				

Rec Total _____ BHT _____ Gravity _____ API RW _____ @ _____ °F Chlorides _____ ppm

(A) Initial Hydrostatic 2068 Test 1250 T-On Location from last test
 (B) First Initial Flow 23 Jars 250 T-Started 1700
 (C) First Final Flow 31 Safety Joint 75 T-Open 1840
 (D) Initial Shut-In 1014 Circ Sub _____ T-Pulled 1950
 (E) Second Initial Flow 32 Hourly Standby _____ T-Out 2145
 (F) Second Final Flow 36 Mileage 102 158.10 Comments _____
 (G) Final Shut-In _____ Sampler _____
 (H) Final Hydrostatic 1981 Straddle _____ Ruined Shale Packer _____
 Shale Packer _____ Ruined Packer _____
 Extra Packer _____ Extra Copies _____
 Initial Open 30 Extra Recorder _____ Sub Total 0
 Initial Shut-In 15 Day Standby _____ Total 1733.10
 Final Flow 20 Accessibility _____ MP/DST Disc't _____
 Final Shut-In N/A Sub Total 1733.10

Approved By _____ Our Representative: [Signature]
 Trilobite Testing Inc. shall not be liable for damaged of any kind of the property or personnel of the one for whom a test is made, or for any loss suffered or sustained, directly or indirectly, through the use of its equipment, or its statements or opinion concerning the results of any test, tools lost or damaged in the hole shall be paid for at cost by the party for whom the test is made.



TRILOBITE TESTING INC.

1515 Commerce Parkway • Hays, Kansas 67601

Test Ticket

NO. **60415**

4/10

Well Name & No. Schniepp-Anslover Unit #1 Test No. 2 Date 11-26-14
 Company American Warrior Inc. Elevation 2123 KB 2115 GL
 Address 3118 Cummings Rd P.O. Box 399 Garden City KS 67846
 Co. Rep / Geo. Jason T Alm Rig Discovery 3
 Location: Sec. 33 Twp. 18S Rge. 21W Co. Ness State Ks

Interval Tested 4214 - 4230 Zone Tested Mississippian
 Anchor Length 16 Drill Pipe Run 4184 Mud Wt. 9.3
 Top Packer Depth 4209 Drill Collars Run 31.35 Vis 49
 Bottom Packer Depth 4214 Wt. Pipe Run 0 WL 1.0
 Total Depth 4230 Chlorides 20000 ppm System LCM 1#

Blow Description 1st Open - Weak blow built to 2 inches into water. 1st Shut-In
No blow back; 2nd Open - Blow built to 2 inches after flush. 2nd Shut In -
No blow back.

Rec	Feet of	%gas	%oil	%water	%mud
<u>65</u>	<u>mud</u>			<u>100</u>	
Rec	Feet of	%gas	%oil	%water	%mud
Rec	Feet of	%gas	%oil	%water	%mud
Rec	Feet of	%gas	%oil	%water	%mud
Rec	Feet of	%gas	%oil	%water	%mud

Rec Total 65 BHT _____ Gravity 1 API RW 1 @ 1 °F Chlorides 1 ppm

(A) Initial Hydrostatic 2070 Test 1250 T-On Location from last test
 (B) First Initial Flow 26 Jars 250 T-Started 0340
 (C) First Final Flow 40 Safety Joint 75 T-Open 0535
 (D) Initial Shut-In 1168 Circ Sub _____ T-Pulled 0805
 (E) Second Initial Flow 41 Hourly Standby _____ T-Out 1000
 (F) Second Final Flow 53 Mileage 152 158.10 Comments _____
 (G) Final Shut-In 1150 Sampler _____
 (H) Final Hydrostatic 1981 Straddle _____ Ruined Shale Packer _____
 Shale Packer _____ Ruined Packer _____
 Extra Packer _____ Extra Copies _____
 Initial Open 30 Extra Recorder _____ Sub Total 0
 Initial Shut-In 30 Day Standby _____ Total 1733.10
 Final Flow 45 Accessibility _____ MP/DST Disc't _____
 Final Shut-In 45 Sub Total 1733.10

Approved By _____

Our Representative Shawn Key

Trilobite Testing Inc. shall not be liable for damaged of any kind of the property or personnel of the one for whom a test is made, or for any loss suffered or sustained, directly or indirectly, through the use of its equipment, or its statements or opinion concerning the results of any test, tools lost or damaged in the hole shall be paid for at cost by the party for whom the test is made.