



**TRILOBITE  
TESTING, INC.**

# DRILL STEM TEST REPORT

Vincent Oil Corp.  
155 N. Market Ste. 700  
Wichita, KS 67202-1821  
ATTN: Jim Hall

**29-29s-24w**  
**Scheib 1-29**  
Job Ticket: 59954      **DST#: 3**  
Test Start: 2014.12.05 @ 00:16:29

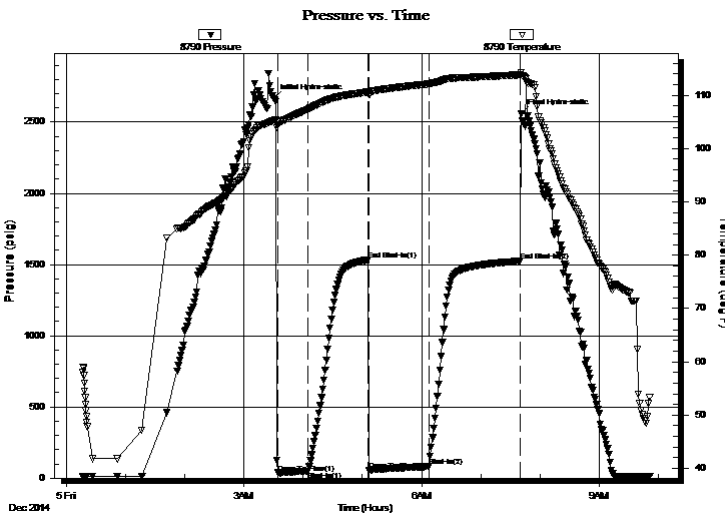
## GENERAL INFORMATION:

Formation: **Mississippi**  
Deviated: No Whipstock: 0.00 ft (KB)  
Time Tool Opened: 03:34:29  
Time Test Ended: 09:51:59  
Interval: **5334.00 ft (KB) To 5410.00 ft (KB) (TVD)**  
Total Depth: 5410.00 ft (KB) (TVD)  
Hole Diameter: 7.88 inches Hole Condition: Fair  
Test Type: Conventional Bottom Hole (Reset)  
Tester: Ryan Reynolds  
Unit No: 68  
Reference Elevations: 2586.00 ft (KB)  
2574.00 ft (CF)  
KB to GR/CF: 12.00 ft

**Serial #: 8790**      **Inside**  
Press@RunDepth: 81.83 psig @ 5338.00 ft (KB)      Capacity: 8000.00 psig  
Start Date: 2014.12.05      End Date: 2014.12.05      Last Calib.: 2014.12.05  
Start Time: 00:16:34      End Time: 09:51:59      Time On Btm: 2014.12.05 @ 03:29:44  
Time Off Btm: 2014.12.05 @ 07:40:59

**TEST COMMENT:** IF: Strong blow . BOB @ 7min.  
IS: No blow .  
FF: Strong blow . BOB immed. NO GTS.  
FS: No blow .

## PRESSURE SUMMARY



Time (Min.)	Pressure (psig)	Temp (deg F)	Annotation
0	2665.42	105.22	Initial Hydro-static
5	36.10	104.94	Open To Flow (1)
36	49.97	107.37	Shut-In(1)
96	1533.46	110.61	End Shut-In(1)
98	54.68	110.14	Open To Flow (2)
158	81.83	112.10	Shut-In(2)
250	1524.70	113.83	End Shut-In(2)
252	2556.64	114.29	Final Hydro-static

## Recovery

Length (ft)	Description	Volume (bbl)
60.00	GWOCM 2%w, 25%o, 35%m, 38%g	0.84
60.00	GOCM 6%o, 14%g, 80%m	0.84
0.00	4255' GIP	0.00

\* Recovery from multiple tests

## Gas Rates

	Choke (inches)	Pressure (psig)	Gas Rate (m <sup>3</sup> /d)



**TRILOBITE  
TESTING, INC**

# DRILL STEM TEST REPORT

## FLUID SUMMARY

Vincent Oil Corp.

**29-29s-24w**

155 N. Market Ste. 700  
Wichita, KS 67202-1821

**Scheib 1-29**

Job Ticket: 59954

**DST#: 3**

ATTN: Jim Hall

Test Start: 2014.12.05 @ 00:16:29

### Mud and Cushion Information

Mud Type: Gel Chem

Cushion Type:

Oil API:

deg API

Mud Weight: 9.00 lb/gal

Cushion Length:

ft

Water Salinity:

9600 ppm

Viscosity: 66.00 sec/qt

Cushion Volume:

bbbl

Water Loss: 11.58 in<sup>3</sup>

Gas Cushion Type:

Resistivity: ohm.m

Gas Cushion Pressure:

psig

Salinity: 9600.00 ppm

Filter Cake: 0.06 inches

### Recovery Information

Recovery Table

Length ft	Description	Volume bbl
60.00	GWOCM 2%w, 25%o, 35%m, 38%g	0.842
60.00	GOCM 6%o, 14%g, 80%m	0.842
0.00	4255' GIP	0.000

Total Length: 120.00 ft

Total Volume: 1.684 bbl

Num Fluid Samples: 0

Num Gas Bombs: 0

Serial #: none

Laboratory Name:

Laboratory Location:

Recovery Comments:

