



**TRILOBITE
TESTING, INC**

DRILL STEM TEST REPORT

Pauley Oil

8-2s-29w Decatur, KS

314 5th St
Clafin KS 67525

Mary #1

Job Ticket: 58268

DST#: 1

ATTN: Jake Eastes

Test Start: 2014.07.08 @ 04:21:00

GENERAL INFORMATION:

Formation: LKC "A - D"

Deviated: No Whipstock: ft (KB)

Time Tool Opened: 06:45:10

Time Test Ended: 11:51:09

Test Type: Conventional Bottom Hole (Initial)

Tester: Ryan Nichols

Unit No: 78

Interval: 3772.00 ft (KB) To 3872.00 ft (KB) (TVD)

Total Depth: 3872.00 ft (KB) (TVD)

Hole Diameter: 7.88 inches Hole Condition: Good

Reference Elevations: 2786.00 ft (KB)

2778.00 ft (CF)

KB to GR/CF: 8.00 ft

Serial #: 6752

Inside

Press@RunDepth: 121.83 psig @ 3763.00 ft (KB)

Start Date: 2014.07.08

End Date:

2014.07.08

Capacity: 8000.00 psig

Last Calib.: 2014.07.08

Start Time: 04:21:01

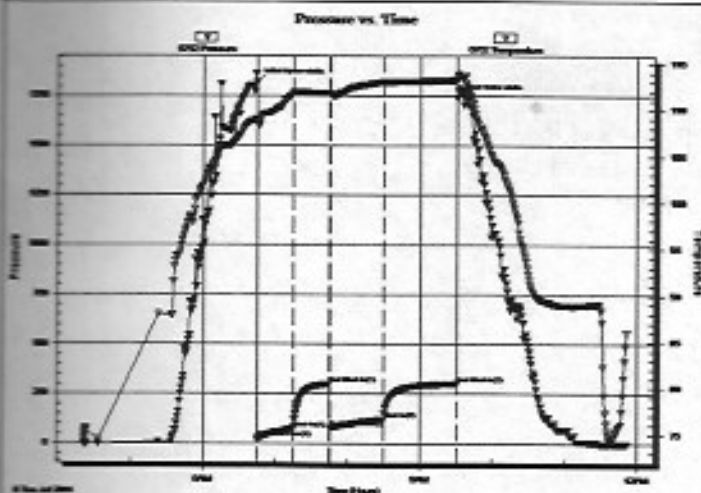
End Time:

11:51:10

Time On Btm: 2014.07.08 @ 06:44:40

Time Off Btm: 2014.07.08 @ 09:30:30

TEST COMMENT: 30 F - 1" blow built to BoB @ 12 mins
30 ISI - Surface blow
45 FF - Surface blow built to BoB @ 15 mins
60 FSI - Surface blow built to 1/2" @ 20 mins died back to surface blow



PRESSURE SUMMARY

Time (Min.)	Pressure (psig)	Temp (deg F)	Annotation
0	1818.50	108.81	Initial Hydro-static
1	23.49	108.47	Open To Flow (1)
31	73.97	111.79	Shut-in(1)
60	300.69	111.77	End Shut-in(1)
61	76.56	111.65	Open To Flow (2)
105	121.83	112.97	Shut-in(2)
166	301.15	113.19	End Shut-in(2)
166	1738.46	113.58	Final Hydro-static

Recovery

Length (ft)	Description	Volume (bbl)
63.00	OCM - 20%o - 80%M	0.88
126.00	GOCM - 5%G - 20%o - 75%M	1.77
63.00	GO - 50%G - 50%o	0.88
5.00	Oil 100%O	0.07
0.00	441' GP	0.00

Gas Rates

	Choke (inches)	Pressure (psig)	Gas Rate (Mc/d)