



TRILOBITE TESTING, INC.

DRILL STEM TEST REPORT

Sam Gary Jr. and Associates, Inc.

6-10S-29W

1515 Wynkoop, Ste 700
Denver Co. 80202

Baalman 1-6

Job Ticket: 61018

DST#: 2

ATTN: Chris Micheal

Test Start: 2014.12.06 @ 12:57:00

GENERAL INFORMATION:

Formation: **Lans. - 'B'**

Deviated: No Whipstock: ft (KB)

Time Tool Opened: 15:15:00

Time Test Ended: 20:42:45

Test Type: Conventional Bottom Hole (Initial)

Tester: Royal Fisher

Unit No: #54

Interval: 3987.00 ft (KB) To 4017.00 ft (KB) (TVD)

Reference Elevations: 2903.00 ft (KB)

Total Depth: 4017.00 ft (KB) (TVD)

2895.00 ft (CF)

Hole Diameter: 7.88 inches Hole Condition: Good

KB to GR/CF: 8.00 ft

Serial #: 6753 Outside

Press @ Run Depth: 49.68 psig @ 3988.00 ft (KB)

Capacity: 8000.00 psig

Start Date: 2014.12.06

End Date:

2014.12.06

Last Calib.:

2014.12.06

Start Time: 12:57:05

End Time:

20:42:44

Time On Btm:

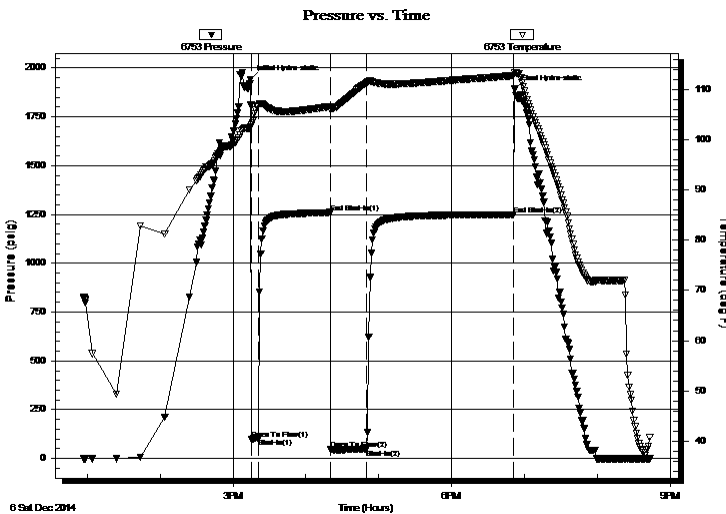
2014.12.06 @ 15:14:30

Time Off Btm:

2014.12.06 @ 18:51:45

TEST COMMENT: 5 - IF - Surface blow built to 3 1/2"
60 - ISI - No Return
30 - FF - Surface blow built to 1 1/2"
120 - FSI - No Return

PRESSURE SUMMARY



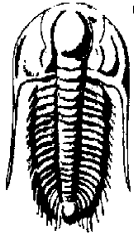
Time (Min.)	Pressure (psig)	Temp (deg F)	Annotation
0	1941.55	102.57	Initial Hydro-static
1	97.46	102.93	Open To Flow (1)
6	105.62	106.73	Shut-In(1)
66	1259.85	106.63	End Shut-In(1)
66	47.38	106.01	Open To Flow (2)
96	49.68	111.40	Shut-In(2)
217	1249.49	112.77	End Shut-In(2)
218	1891.09	113.42	Final Hydro-static

Recovery

Length (ft)	Description	Volume (bbl)
72.00	OCM - 85M - 15o	0.72

Gas Rates

Choke (inches)	Pressure (psig)	Gas Rate (Mcf/d)



TRILOBITE TESTING, INC.

DRILL STEM TEST REPORT

Sam Gary Jr. and Associates, Inc.

6-10S-29W

1515 Wynkoop, Ste 700
Denver Co. 80202

Baalman 1-6

Job Ticket: 61018

DST#: 2

ATTN: Chris Micheal

Test Start: 2014.12.06 @ 12:57:00

GENERAL INFORMATION:

Formation: **Lans. - 'B'**

Deviated: No Whipstock: ft (KB)

Time Tool Opened: 15:15:00

Time Test Ended: 20:42:45

Test Type: Conventional Bottom Hole (Initial)

Tester: Royal Fisher

Unit No: #54

Interval: 3987.00 ft (KB) To 4017.00 ft (KB) (TVD)

Total Depth: 4017.00 ft (KB) (TVD)

Hole Diameter: 7.88 inches Hole Condition: Good

Reference Elevations: 2903.00 ft (KB)

2895.00 ft (CF)

KB to GR/CF: 8.00 ft

Serial #: 8368

Press @RunDepth: psig @ ft (KB)

Start Date: 2014.12.06

End Date: 2014.12.06

Start Time: 12:57:05

End Time: 20:42:44

Capacity: 8000.00 psig

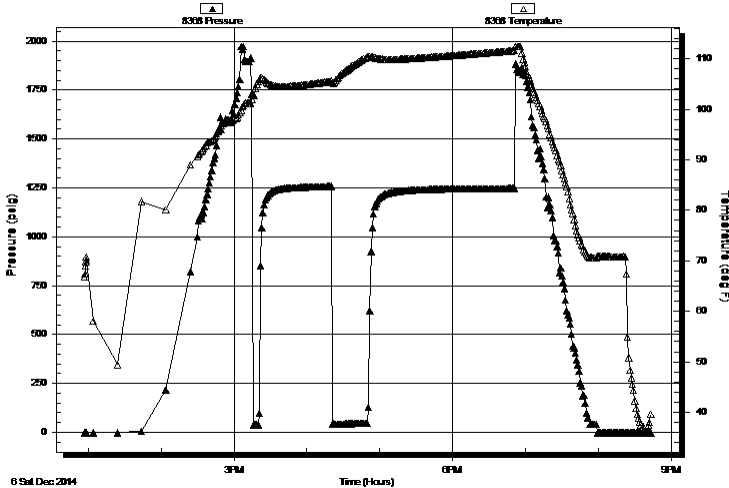
Last Calib.: 2014.12.06

Time On Btm:

Time Off Btm:

TEST COMMENT: 5 - IF - Surface blow built to 3 1/2"
60 - ISI - No Return
30 - FF - Surface blow built to 1 1/2"
120 - FSI - No Return

Pressure vs. Time



PRESSURE SUMMARY

Time (Min.)	Pressure (psig)	Temp (deg F)	Annotation

Recovery

Length (ft)	Description	Volume (bbl)
72.00	OCM - 85M - 15o	0.72

Gas Rates

	Choke (inches)	Pressure (psig)	Gas Rate (Mcf/d)



TRILOBITE TESTING, INC.

DRILL STEM TEST REPORT

Sam Gary Jr. and Associates, Inc.

6-10S-29W

1515 Wynkoop, Ste 700
Denver Co. 80202

Baalman 1-6

Job Ticket: 61018

DST#: 2

ATTN: Chris Micheal

Test Start: 2014.12.06 @ 12:57:00

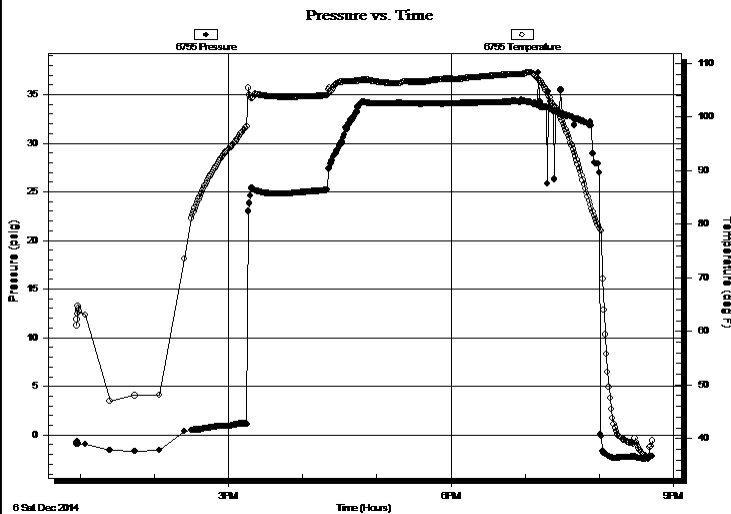
GENERAL INFORMATION:

Formation: Lans. - 'B'		Test Type: Conventional Bottom Hole (Initial)
Deviated: No Whipstock: ft (KB)		Tester: Royal Fisher
Time Tool Opened: 15:15:00		Unit No: #54
Time Test Ended: 20:42:45		Reference Elevations: 2903.00 ft (KB)
Interval: 3987.00 ft (KB) To 4017.00 ft (KB) (TVD)		2895.00 ft (CF)
Total Depth: 4017.00 ft (KB) (TVD)		KB to GR/CF: 8.00 ft
Hole Diameter: 7.88 inches	Hole Condition: Good	

Serial #: 6755

Press @RunDepth: psig @ ft (KB)	Capacity: 8000.00 psig
Start Date: 2014.12.06	End Date: 2014.12.06
Start Time: 12:57:05	End Time: 20:42:44
Last Calib.: 2014.12.06	Time On Btm:
	Time Off Btm:

TEST COMMENT: 5 - IF - Surface blow built to 3 1/2"
60 - ISI - No Return
30 - FF - Surface blow built to 1 1/2"
120 - FSI - No Return



PRESSURE SUMMARY

Time (Min.)	Pressure (psig)	Temp (deg F)	Annotation

Recovery

Length (ft)	Description	Volume (bbl)
72.00	OCM - 85M - 15o	0.72

Gas Rates

	Choke (inches)	Pressure (psig)	Gas Rate (Mcf/d)



**TRILOBITE
TESTING, INC.**

DRILL STEM TEST REPORT

FLUID SUMMARY

Sam Gary Jr. and Associates, Inc.

6-10S-29W

1515 Wynkoop, Ste 700
Denver Co. 80202

Baalman 1-6

Job Ticket: 61018

DST#: 2

ATTN: Chris Micheal

Test Start: 2014.12.06 @ 12:57:00

Mud and Cushion Information

Mud Type: Gel Chem

Cushion Type:

Oil API:

deg API

Mud Weight: 9.00 lb/gal

Cushion Length:

ft

Water Salinity:

ppm

Viscosity: 52.00 sec/qt

Cushion Volume:

bbbl

Water Loss: 7.99 in³

Gas Cushion Type:

Resistivity: 0.00 ohm.m

Gas Cushion Pressure:

psig

Salinity: 700.00 ppm

Filter Cake: 1.00 inches

Recovery Information

Recovery Table

Length ft	Description	Volume bbl
72.00	OCM - 85M - 15o	0.723

Total Length: 72.00 ft Total Volume: 0.723 bbl

Num Fluid Samples: 0

Num Gas Bombs: 0

Serial #:

Laboratory Name:

Laboratory Location:

Recovery Comments:

