



## DRILL STEM TEST REPORT

Prepared For: **Omimex Petroleum, Inc.**

7950 John T. White Road  
Fort Worth, TX 76120-3570

ATTN: Rajeev Lal/Tom Willi

### **Clark #6-21**

### **21-27s-16w Kiowa, KS**

Start Date: 2014.10.28 @ 23:52:00

End Date: 2014.10.29 @ 10:27:45

Job Ticket #: 59919                      DST #: 1

Trilobite Testing, Inc  
1515 Commerce Parkway Hays, KS 67601  
ph: 785-625-4778 fax: 785-625-5620

Printed: 2014.10.31 @ 09:56:35



**TRILOBITE TESTING, INC**

# DRILL STEM TEST REPORT

Omimex Petroleum, Inc.  
7950 John T. White Road  
Fort Worth, TX 76120-3570  
ATTN: Rajeev Lal/Tom Willi

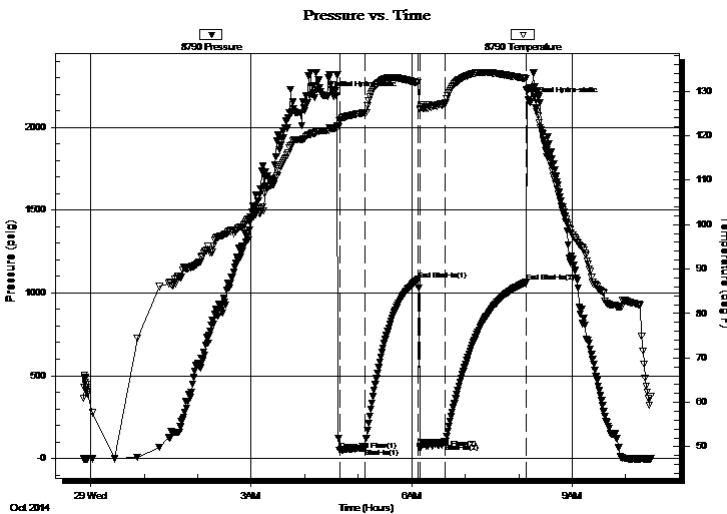
**21-27s-16w Kiowa, KS**  
**Clark #6-21**  
Job Ticket: 59919 **DST#: 1**  
Test Start: 2014.10.28 @ 23:52:00

## GENERAL INFORMATION:

Formation: **Mississippian**  
Deviated: No Whipstock: ft (KB)  
Time Tool Opened: 04:39:15  
Time Test Ended: 10:27:45  
Interval: **4515.00 ft (KB) To 4645.00 ft (KB) (TVD)**  
Total Depth: 4645.00 ft (KB) (TVD)  
Hole Diameter: 7.88 inches Hole Condition: Fair  
Reference Elevations: 2106.00 ft (KB)  
2095.00 ft (CF)  
KB to GR/CF: 11.00 ft

**Serial #: 8790 Inside**  
Press@RunDepth: 89.36 psig @ 4542.00 ft (KB) Capacity: 8000.00 psig  
Start Date: 2014.10.28 End Date: 2014.10.29 Last Calib.: 1899.12.30  
Start Time: 23:52:05 End Time: 10:27:45 Time On Btm: 2014.10.29 @ 04:25:15  
Time Off Btm: 2014.10.29 @ 08:12:45

**TEST COMMENT:** Weak blow building to strong blow (bottom of bucket) 2 minutes into initial flow period.  
Strong blow throughout final flow period. Gas to surface 3 minutes into final flow period.



## PRESSURE SUMMARY

Time (Min.)	Pressure (psig)	Temp (deg F)	Annotation
0	2190.45	121.15	Initial Hydro-static
14	47.38	123.57	Open To Flow (1)
43	64.15	125.25	Shut-In(1)
102	1081.26	131.92	End Shut-In(1)
105	61.21	126.16	Open To Flow (2)
132	89.36	127.52	Shut-In(2)
223	1063.73	132.91	End Shut-In(2)
228	2154.06	130.67	Final Hydro-static

## Recovery

Length (ft)	Description	Volume (bbl)
195.00	Drilling mud 100% M	0.96
0.00	GTS	0.00

## Gas Rates

	Choke (inches)	Pressure (psig)	Gas Rate (Mcf/d)
First Gas Rate	0.25	3.00	27.60
Last Gas Rate	0.25	3.00	27.60
Max. Gas Rate	0.25	3.00	27.60



# DRILL STEM TEST REPORT

Omimex Petroleum, Inc.  
 7950 John T. White Road  
 Fort Worth, TX 76120-3570  
 ATTN: Rajeev Lal/Tom Willi

**21-27s-16w Kiowa, KS**

**Clark #6-21**

Job Ticket: 59919 **DST#: 1**  
 Test Start: 2014.10.28 @ 23:52:00

## GENERAL INFORMATION:

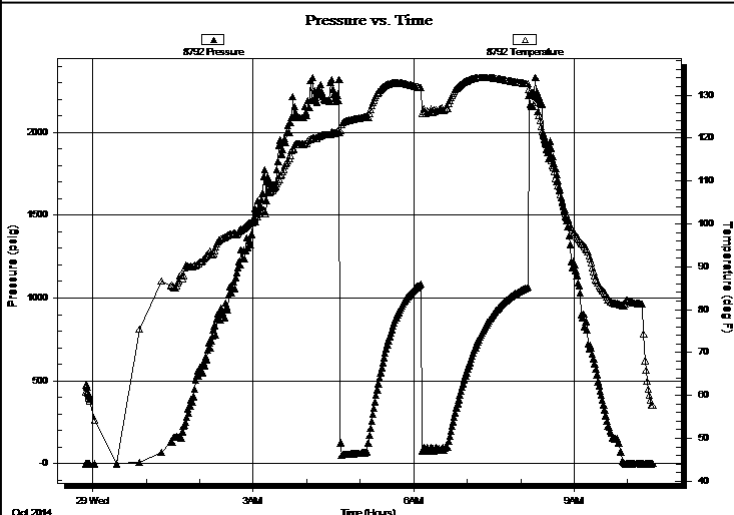
Formation: **Mississippian**  
 Deviated: No Whipstock: ft (KB)  
 Time Tool Opened: 04:39:15  
 Time Test Ended: 10:27:45  
**Interval: 4515.00 ft (KB) To 4645.00 ft (KB) (TVD)**  
 Total Depth: 4645.00 ft (KB) (TVD)  
 Hole Diameter: 7.88 inches Hole Condition: Fair  
 Test Type: Inflate Bottom Hole (Initial)  
 Tester: Jimmy Ricketts  
 Unit No: 68  
 Reference Elevations: 2106.00 ft (KB)  
 2095.00 ft (CF)  
 KB to GR/CF: 11.00 ft

## Serial #: 8792

**Outside**

Press@RunDepth: psig @ 4542.00 ft (KB) Capacity: 8000.00 psig  
 Start Date: 2014.10.28 End Date: 2014.10.29 Last Calib.: 1899.12.30  
 Start Time: 23:52:05 End Time: 10:27:45 Time On Btm:  
 Time Off Btm:

TEST COMMENT: Weak blow building to strong blow (bottom of bucket) 2 minutes into initial flow period.  
 Strong blow throughout final flow period. Gas to surface 3 minutes into final flow period.



## PRESSURE SUMMARY

Time (Min.)	Pressure (psig)	Temp (deg F)	Annotation

## Recovery

Length (ft)	Description	Volume (bbl)
195.00	Drilling mud 100% M	0.96
0.00	GTS	0.00

## Gas Rates

	Choke (inches)	Pressure (psig)	Gas Rate (Mcf/d)
First Gas Rate	0.25	3.00	27.60
Last Gas Rate	0.25	3.00	27.60
Max. Gas Rate	0.25	3.00	27.60



**TRILOBITE  
TESTING, INC.**

# DRILL STEM TEST REPORT

**TOOL DIAGRAM**

Omimex Petroleum, Inc.  
7950 John T. White Road  
Fort Worth, TX 76120-3570  
ATTN: Rajeev Lal/Tom Willi

**21-27s-16w Kiowa, KS**  
**Clark #6-21**  
Job Ticket: 59919      **DST#: 1**  
Test Start: 2014.10.28 @ 23:52:00

**Tool Information**

Drill Pipe:	Length: 4206.00 ft	Diameter: 3.80 inches	Volume: 59.00 bbl	Tool Weight: 2600.00 lb
Heavy Wt. Pipe:	Length: 0.00 ft	Diameter: inches	Volume: 0.00 bbl	Weight set on Packer: 20000.00 lb
Drill Collar:	Length: 307.00 ft	Diameter: 2.25 inches	Volume: 1.51 bbl	Weight to Pull Loose: 56000.00 lb
			<u>Total Volume: 60.51 bbl</u>	Tool Chased 1.00 ft
Drill Pipe Above KB:	25.00 ft			String Weight: Initial 50000.00 lb
Depth to Top Packer:	4515.00 ft			Final 52000.00 lb
Depth to Bottom Packer:	ft			
Interval between Packers:	130.00 ft			
Tool Length:	157.00 ft			
Number of Packers:	2	Diameter: 6.75 inches		

Tool Comments:

**Tool Description**

**Length (ft)    Serial No.    Position    Depth (ft)    Accum. Lengths**

Change Over Sub	1.00			4489.00	
Shut In Tool	5.00			4494.00	
Hydraulic tool	5.00			4499.00	
Jars	5.00			4504.00	
Safety Joint	2.00			4506.00	
Packer	5.00			4511.00	27.00      Bottom Of Top Packer
Packer	4.00			4515.00	
Stubb	1.00			4516.00	
Perforations	25.00			4541.00	
Change Over Sub	1.00			4542.00	
Recorder	0.00	8790	Inside	4542.00	
Recorder	0.00	8792	Outside	4542.00	
Drill Pipe	94.00			4636.00	
Change Over Sub	1.00			4637.00	
Perforations	5.00			4642.00	
Bullnose	3.00			4645.00	130.00      Bottom Packers & Anchor
<b>Total Tool Length:</b>	<b>157.00</b>				



**TRILOBITE  
TESTING, INC**

# DRILL STEM TEST REPORT

## FLUID SUMMARY

Omimex Petroleum, Inc.

**21-27s-16w Kiowa, KS**

7950 John T. White Road  
Fort Worth, TX 76120-3570

**Clark #6-21**

Job Ticket: 59919

**DST#: 1**

ATTN: Rajeev Lal/Tom Willi

Test Start: 2014.10.28 @ 23:52:00

### Mud and Cushion Information

Mud Type: Gel Chem

Mud Weight: 10.00 lb/gal

Viscosity: 50.00 sec/qt

Water Loss: 8.99 in<sup>3</sup>

Resistivity: ohm.m

Salinity: 4000.00 ppm

Filter Cake: inches

Cushion Type:

Cushion Length: ft

Cushion Volume: bbl

Gas Cushion Type:

Gas Cushion Pressure: psig

Oil API:

Water Salinity: deg API

ppm

### Recovery Information

Recovery Table

Length ft	Description	Volume bbl
195.00	Drilling mud 100% M	0.959
0.00	GTS	0.000

Total Length: 195.00 ft      Total Volume: 0.959 bbl

Num Fluid Samples: 1

Num Gas Bombs: 0

Serial #:

Laboratory Name:

Laboratory Location:

Recovery Comments:



**TRILOBITE  
TESTING, INC.**

## DRILL STEM TEST REPORT

**GAS RATES**

Omimex Petroleum, Inc.

**21-27s-16w Kiowa, KS**

7950 John T. White Road  
Fort Worth, TX 76120-3570

**Clark #6-21**

Job Ticket: 59919

**DST#: 1**

ATTN: Rajeev Lal/Tom Willi

Test Start: 2014.10.28 @ 23:52:00

### Gas Rates Information

Temperature: 59 (deg F)  
Relative Density: 0.65  
Z Factor: 0.8

Gas Rates Table

Flow Period	Elapsed Time	Choke (inches)	Pressure (psig)	Gas Rate (Mcf/d)
2	13	0.25	3.00	27.60
2	13	0.25	3.00	27.60
2	13	0.25	3.00	27.60

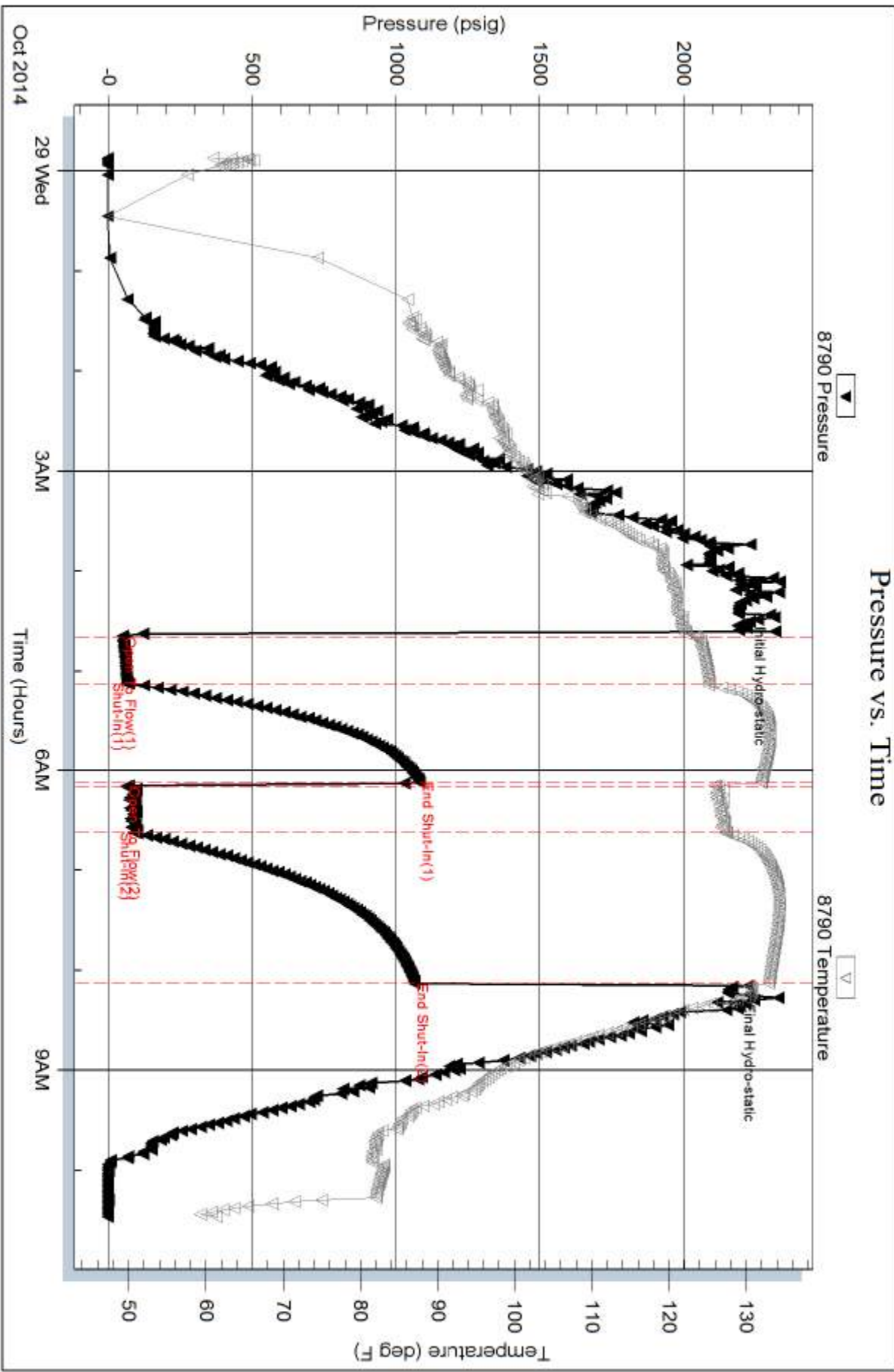
Serial #: 8790

Inside

Ominex Petroleum, Inc.

Clark #6-21

DST Test Number: 1



Serial #: 8792

Outside Ominex Petroleum, Inc.

Clark #6-21

DST Test Number: 1

