



**TRILOBITE  
TESTING, INC.**

# DRILL STEM TEST REPORT

Herman L. Loeb, LLC.  
P.O. Box 838  
Lawrenceville, IL 62439  
ATTN: Jon Christensen

**28-27s-18w Kiowa, Co., Ks.**

**Yost #2-28**

Job Ticket: 57812

**DST#: 1**

Test Start: 2015.03.27 @ 19:33:45

## GENERAL INFORMATION:

Formation: **Lansing "I"**

Deviated: No Whipstock: 0.00 ft (KB)

Time Tool Opened: 22:40:15

Time Test Ended: 04:41:45

Test Type: Conventional Bottom Hole (Initial)

Tester: Matt Smith

Unit No: 53

**Interval: 4416.00 ft (KB) To 4434.00 ft (KB) (TVD)**

Total Depth: 4434.00 ft (KB) (TVD)

Hole Diameter: 7.88 inches Hole Condition: Fair

Reference Elevations: 2225.00 ft (KB)

2212.00 ft (CF)

KB to GR/CF: 13.00 ft

**Serial #: 8931**

**Inside**

Press @ Run Depth: 40.32 psig @ 4417.00 ft (KB)

Start Date: 2015.03.27

End Date:

2015.03.28

Start Time: 19:33:50

End Time:

04:41:45

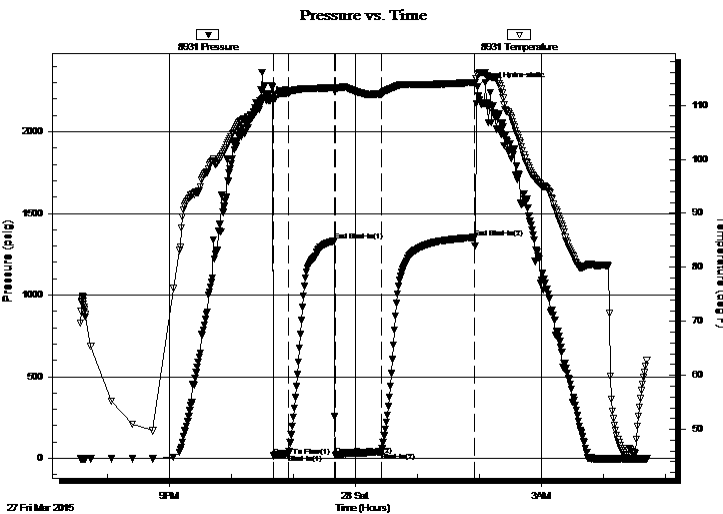
Capacity: 8000.00 psig

Last Calib.: 2015.03.28

Time On Btm: 2015.03.27 @ 22:36:30

Time Off Btm: 2015.03.28 @ 01:57:30

**TEST COMMENT:** IF: Strong blow . B.O.B. in 7 1/2 mins.  
IS: Weak blow . Surf., - 2". 4 min bleed off. Blow back started after 20 mins.  
FF: Strong blow . B.O.B. immediate.  
FSI: Weak blow . Surf., - 2". Blow back started in 15 mins. Died back to 1", in 65 mins.



## PRESSURE SUMMARY

Time (Min.)	Pressure (psig)	Temp (deg F)	Annotation
0	2192.78	112.12	Initial Hydro-static
4	15.53	110.82	Open To Flow (1)
19	24.93	112.25	Shut-In(1)
63	1330.69	113.26	End Shut-In(1)
64	19.99	113.17	Open To Flow (2)
109	40.32	112.06	Shut-In(2)
199	1352.63	114.23	End Shut-In(2)
201	2273.62	115.69	Final Hydro-static

## Recovery

Length (ft)	Description	Volume (bbl)
60.00	MWOCG 5%w 10%w 35%oc 50%g	0.30
20.00	WGOCM3%w 29%g 34%oc 34%m	0.28
0.00	3,368' G.I.P. 100%g	0.00

## Gas Rates

	Choke (inches)	Pressure (psig)	Gas Rate (Mcf/d)



**TRILOBITE  
TESTING, INC.**

# DRILL STEM TEST REPORT

**FLUID SUMMARY**

Herman L. Loeb, LLC.  
P.O. Box 838  
Lawrenceville, IL. 62439  
ATTN: Jon Christensen

**28-27s-18w Kiowa, Co., Ks.**  
**Yost #2-28**  
Job Ticket: 57812      **DST#: 1**  
Test Start: 2015.03.27 @ 19:33:45

## Mud and Cushion Information

Mud Type: Gel Chem	Cushion Type:	Oil API:	deg API
Mud Weight: 9.00 lb/gal	Cushion Length: ft	Water Salinity:	5100 ppm
Viscosity: 58.00 sec/qt	Cushion Volume: bbl		
Water Loss: 8.79 in <sup>3</sup>	Gas Cushion Type:		
Resistivity: ohm.m	Gas Cushion Pressure: psig		
Salinity: 5100.00 ppm			
Filter Cake: 0.20 inches			

## Recovery Information

Recovery Table

Length ft	Description	Volume bbl
60.00	MWOCG 5% <i>m</i> 10% <i>w</i> 35% <i>oc</i> 50% <i>g</i>	0.295
20.00	WGOCM3% <i>w</i> 29% <i>g</i> 34% <i>oc</i> 34% <i>m</i>	0.281
0.00	3,368' G.I.P. 100% <i>g</i>	0.000

Total Length: 80.00 ft      Total Volume: 0.576 bbl  
Num Fluid Samples: 0      Num Gas Bombs: 0      Serial #: none  
Laboratory Name:      Laboratory Location:  
Recovery Comments: Rw 5100

Serial #: 8931

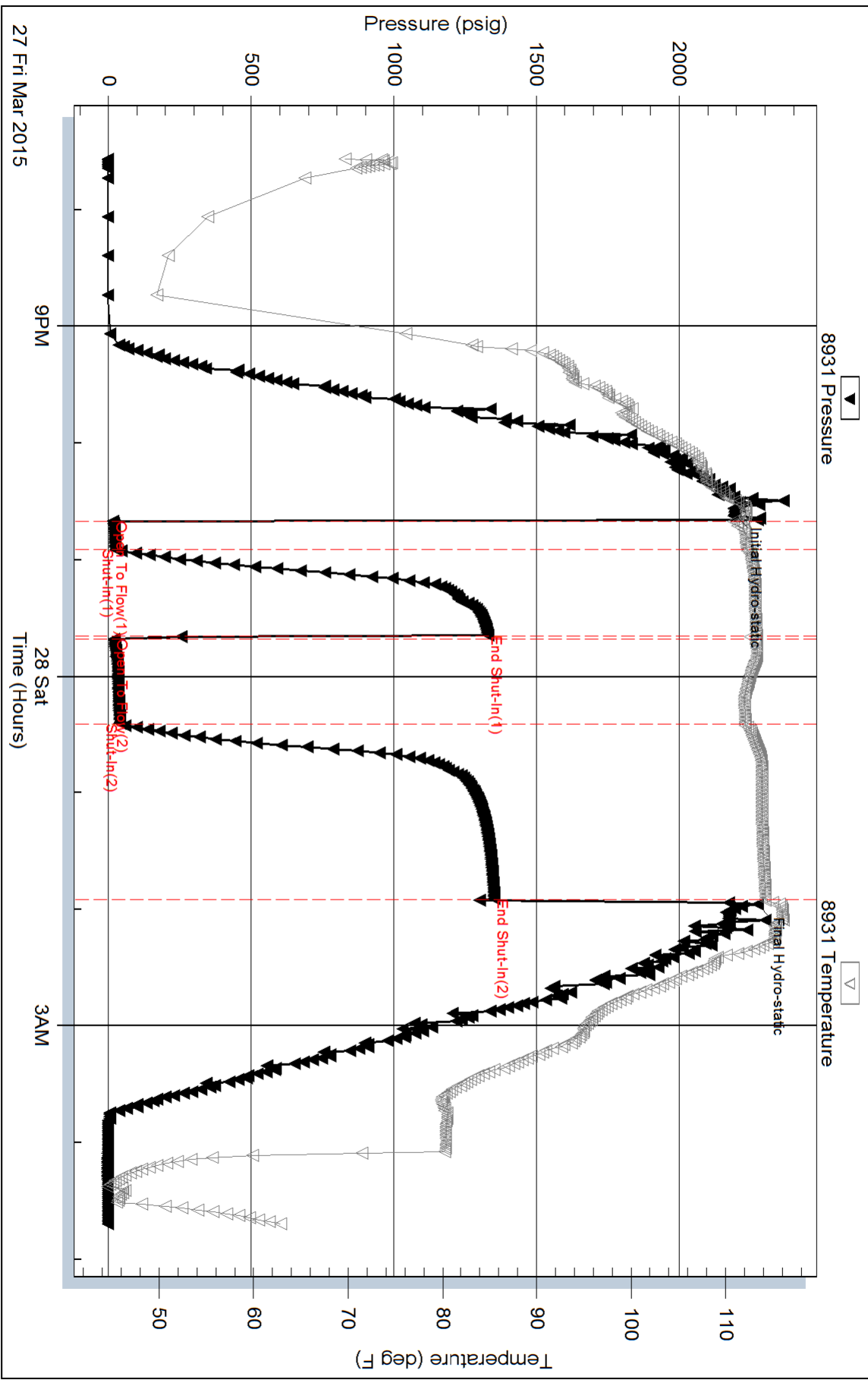
Inside

Herrman L. Loeb, LLC.

Yost #2-28

DST Test Number: 1

# Pressure vs. Time



Triobite Testing, Inc

Ref. No: 57812

Printed: 2015.03.28 @ 07:03:27