



**TRILOBITE
TESTING, INC**

DRILL STEM TEST REPORT

Herman L. Loeb, LLC.
P.O. Box 838
Lawrenceville, IL. 62439
ATTN: Jon Christensen

28-27s-18w Kiowa, Co., Ks.

Yost #2-28

Job Ticket: 57814

DST#: 3

Test Start: 2015.03.30 @ 05:15:23

GENERAL INFORMATION:

Formation: **Mississippi**

Deviated: No Whipstock: 0.00 ft (KB)

Time Tool Opened: 08:29:23

Time Test Ended: 14:18:53

Test Type: Conventional Bottom Hole (Reset)

Tester: Matt Smith

Unit No: 53

Interval: 4760.00 ft (KB) To 4810.00 ft (KB) (TVD)

Total Depth: 4810.00 ft (KB) (TVD)

Hole Diameter: 7.88 inches Hole Condition: Fair

Reference Elevations: 2225.00 ft (KB)

2212.00 ft (CF)

KB to GR/CF: 13.00 ft

Serial #: 8931

Inside

Press@RunDepth: 45.60 psig @ 4761.00 ft (KB)

Start Date: 2015.03.30

End Date:

2015.03.30

Start Time: 05:15:28

End Time:

14:18:53

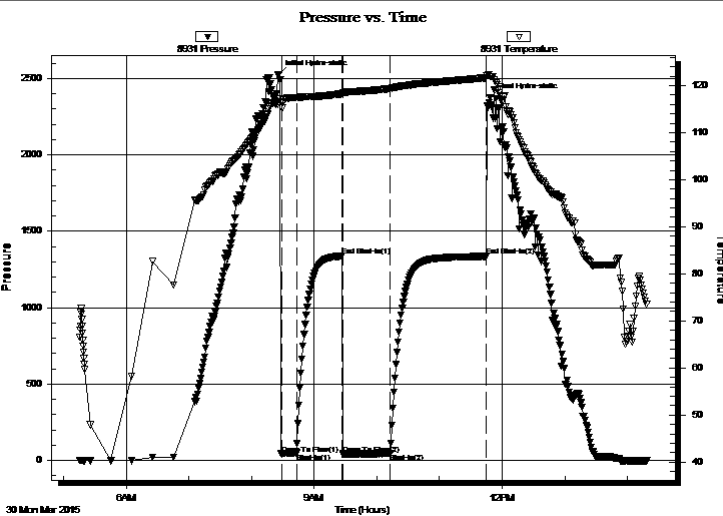
Capacity: 8000.00 psig

Last Calib.: 2015.03.30

Time On Btm: 2015.03.30 @ 08:26:23

Time Off Btm: 2015.03.30 @ 11:48:23

TEST COMMENT: IF: Strong blow . B.O.B. in 1 min.
IS: Weak blow . Surf., - 1". 6 mins., to bleed off. Blow back in 15 mins.
FF: Strong blow . B.O.B. immediate. G.T.S. in 10 mins. Gauged gas, see gass report.
FS: No blow .



PRESSURE SUMMARY

Time (Min.)	Pressure (psig)	Temp (deg F)	Annotation
0	2525.13	117.15	Initial Hydro-static
3	41.53	115.23	Open To Flow (1)
17	49.53	117.46	Shut-In(1)
61	1338.35	118.26	End Shut-In(1)
62	39.49	118.38	Open To Flow (2)
107	45.60	119.37	Shut-In(2)
199	1336.16	121.66	End Shut-In(2)
202	2372.88	121.97	Final Hydro-static

Recovery

Length (ft)	Description	Volume (bbl)
40.00	Oil spec GM 5%g 95%m	0.20
0.00	G.I.P. G.T.S. 100%g	0.00

Gas Rates

	Choke (inches)	Pressure (psig)	Gas Rate (Mcf/d)
First Gas Rate	0.25	9.00	37.12
Last Gas Rate	0.25	9.50	37.91
Max. Gas Rate	0.25	9.50	37.91

* Recovery from multiple tests



**TRILOBITE
TESTING, INC**

DRILL STEM TEST REPORT

FLUID SUMMARY

Herman L. Loeb, LLC.
P.O. Box 838
Lawrenceville, IL. 62439
ATTN: Jon Christensen

28-27s-18w Kiowa, Co., Ks.
Yost #2-28
Job Ticket: 57814 **DST#: 3**
Test Start: 2015.03.30 @ 05:15:23

Mud and Cushion Information

Mud Type: Gel Chem	Cushion Type:	Oil API:	deg API
Mud Weight: 9.00 lb/gal	Cushion Length: ft	Water Salinity:	6300 ppm
Viscosity: 62.00 sec/qt	Cushion Volume: bbl		
Water Loss: 9.19 in ³	Gas Cushion Type:		
Resistivity: ohm.m	Gas Cushion Pressure: psig		
Salinity: 6300.00 ppm			
Filter Cake: 0.20 inches			

Recovery Information

Recovery Table

Length ft	Description	Volume bbl
40.00	Oil spec GM 5%g 95%m	0.197
0.00	G.I.P. G.T.S. 100%g	0.000

Total Length: 40.00 ft Total Volume: 0.197 bbl

Num Fluid Samples: 1 Num Gas Bombs: 3 Serial #: MAS Pratt

Laboratory Name: Caraway Laboratory Location: Liberal, KS

Recovery Comments:



**TRILOBITE
TESTING, INC.**

DRILL STEM TEST REPORT

GAS RATES

Herman L. Loeb, LLC.

28-27s-18w Kiowa, Co., Ks.

P.O. Box 838
Lawrenceville, IL. 62439

Yost #2-28

Job Ticket: 57814

DST#: 3

ATTN: Jon Christensen

Test Start: 2015.03.30 @ 05:15:23

Gas Rates Information

Temperature: 59 (deg F)
Relative Density: 0.65
Z Factor: 0.8

Gas Rates Table

Flow Period	Elapsed Time	Choke (inches)	Pressure (psig)	Gas Rate (Mcf/d)
2	10	0.25	9.00	37.12
2	10	0.25	9.00	37.12
2	20	0.25	9.00	37.12
2	30	0.25	9.00	37.12
2	40	0.25	9.50	37.91

