



**TRILOBITE
TESTING, INC**

DRILL STEM TEST REPORT

Vincent Oil Corp.
155 N. Market Ste. 700
Wichita, KS 67202-1821
ATTN: Tom Dudgeon

28-28s-23w. Ford Co. Ks

Brown 2-28

Job Ticket: 59960

DST#: 5

Test Start: 2015.01.05 @ 23:54:15

GENERAL INFORMATION:

Formation: **Miss.**

Deviated: No Whipstock: 0.00 ft (KB)

Time Tool Opened: 02:11:00

Time Test Ended: 08:51:45

Test Type: Conventional Bottom Hole (Reset)

Tester: Ryan Reynolds

Unit No: 68

Interval: 5182.00 ft (KB) To 5208.00 ft (KB) (TVD)

Reference Elevations: 2483.00 ft (KB)

Total Depth: 5208.00 ft (KB) (TVD)

2473.00 ft (CF)

Hole Diameter: 7.88 inches Hole Condition: Fair

KB to GR/CF: 10.00 ft

Serial #: 8790

Inside

Press@RunDepth: 38.38 psig @ 5183.00 ft (KB)

Capacity: 8000.00 psig

Start Date: 2015.01.05

End Date:

2015.01.06

Last Calib.:

2015.01.06

Start Time: 23:54:20

End Time:

08:51:45

Time On Btm:

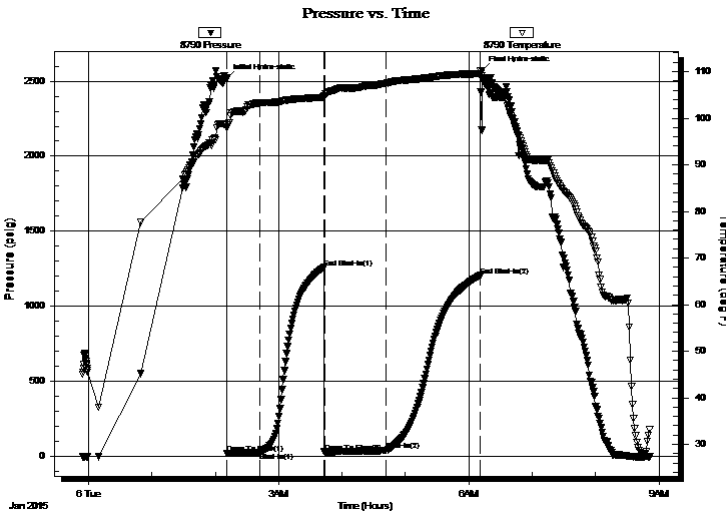
2015.01.06 @ 02:10:30

Time Off Btm:

2015.01.06 @ 06:12:45

TEST COMMENT: IF: Weak blow . surf. - 1"
IS: No blow .
FF: Fair blow . surf. - 7"
FS: No blow .

PRESSURE SUMMARY



| Time (Min.) | Pressure (psig) | Temp (deg F) | Annotation |
|-------------|-----------------|--------------|----------------------|
| 0 | 2519.79 | 98.49 | Initial Hydro-static |
| 1 | 18.97 | 97.93 | Open To Flow (1) |
| 32 | 27.03 | 103.28 | Shut-In(1) |
| 93 | 1258.33 | 104.49 | End Shut-In(1) |
| 93 | 29.33 | 104.78 | Open To Flow (2) |
| 152 | 38.38 | 107.43 | Shut-In(2) |
| 241 | 1204.93 | 109.54 | End Shut-In(2) |
| 243 | 2571.95 | 108.15 | Final Hydro-static |

Recovery

| Length (ft) | Description | Volume (bbl) |
|-------------|-------------------------|--------------|
| 60.00 | SLI GOCM 1%o, 4%g, 95%m | 0.84 |
| 0.00 | 120' GIP | 0.00 |
| | | |
| | | |
| | | |

Gas Rates

| | Choke (inches) | Pressure (psig) | Gas Rate (Mcf/d) |
|--|----------------|-----------------|------------------|
| | | | |

* Recovery from multiple tests



**TRILOBITE
TESTING, INC**

DRILL STEM TEST REPORT

FLUID SUMMARY

Vincent Oil Corp.

28-28s-23w. Ford Co. Ks

155 N. Market Ste. 700
Wichita, KS 67202-1821

Brown 2-28

Job Ticket: 59960

DST#: 5

ATTN: Tom Dudgeon

Test Start: 2015.01.05 @ 23:54:15

Mud and Cushion Information

Mud Type: Gel Chem

Cushion Type:

Oil API:

deg API

Mud Weight: 9.00 lb/gal

Cushion Length:

ft

Water Salinity:

14800 ppm

Viscosity: 74.00 sec/qt

Cushion Volume:

bbbl

Water Loss: 14.79 in³

Gas Cushion Type:

Resistivity: ohm.m

Gas Cushion Pressure:

psig

Salinity: 14800.00 ppm

Filter Cake: 0.06 inches

Recovery Information

Recovery Table

| Length ft | Description | Volume bbbl |
|--------------|-------------------------|----------------|
| 60.00 | SLI GOCM 1%o, 4%g, 95%m | 0.842 |
| 0.00 | 120' GIP | 0.000 |

Total Length: 60.00 ft

Total Volume: 0.842 bbl

Num Fluid Samples: 0

Num Gas Bombs: 0

Serial #: none

Laboratory Name:

Laboratory Location:

Recovery Comments:

