



DRILL STEM TEST REPORT

Prepared For: **American Warrior Inc.**

3118 Cummings Rd.
Garden City, KS 67846

ATTN: Kevin Timson

O'Brate-Finney #7-5

5-23s-32w-Finney,KS

Start Date: 2015.03.09 @ 20:51:00

End Date: 2015.03.10 @ 04:28:30

Job Ticket #: 56599 DST #: 1

Trilobite Testing, Inc
1515 Commerce Parkway Hays, KS 67601
ph: 785-625-4778 fax: 785-625-5620

Printed: 2015.03.16 @ 13:15:19



**TRILOBITE
TESTING, INC**

DRILL STEM TEST REPORT

American Warrior Inc.

5-23s-32w-Finney,KS

3118 Cummings Rd.
Garden City, KS 67846

O'Brate-Finney #7-5

Job Ticket: 56599

DST#: 1

ATTN: Kevin Timson

Test Start: 2015.03.09 @ 20:51:00

GENERAL INFORMATION:

Formation: **Pawnee**

Deviated: No Whipstock: ft (KB)

Time Tool Opened: 00:40:45

Time Test Ended: 04:28:30

Test Type: Conventional Bottom Hole (Initial)

Tester: Cornelio Landa III

Unit No: 67

Interval: 4445.00 ft (KB) To 4474.00 ft (KB) (TVD)

Reference Elevations: 2864.00 ft (KB)

Total Depth: 4474.00 ft (KB) (TVD)

2853.00 ft (CF)

Hole Diameter: 7.88 inches Hole Condition: Good

KB to GR/CF: 11.00 ft

Serial #: 8968 Outside

Press@RunDepth: 19.46 psig @ 4446.00 ft (KB)

Capacity: 8000.00 psig

Start Date: 2015.03.09

End Date:

2015.03.10

Last Calib.:

2015.03.10

Start Time: 20:51:05

End Time:

04:28:29

Time On Btm:

2015.03.10 @ 00:40:30

Time Off Btm:

2015.03.10 @ 02:41:45

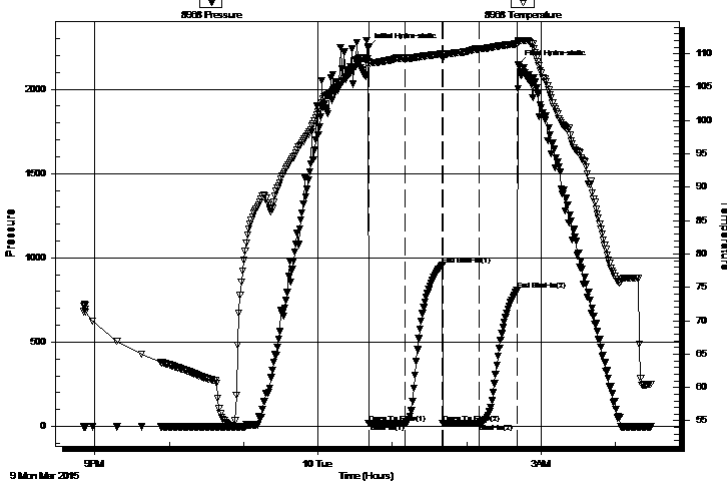
TEST COMMENT: IF: Weak surface blow

IS: No return

FF: No blow

FS: No return

Pressure vs. Time



PRESSURE SUMMARY

Time (Min.)	Pressure (psig)	Temp (deg F)	Annotation
0	2247.68	109.29	Initial Hydro-static
1	16.92	108.24	Open To Flow (1)
30	16.70	109.33	Shut-In(1)
60	959.05	109.98	End Shut-In(1)
60	18.69	109.34	Open To Flow (2)
90	19.46	110.71	Shut-In(2)
120	808.66	111.48	End Shut-In(2)
122	2146.60	111.89	Final Hydro-static

Recovery

Length (ft)	Description	Volume (bbl)
5.00	Mud 100m w/traces of oil	0.07

Gas Rates

	Choke (inches)	Pressure (psig)	Gas Rate (Mcf/d)



**TRILOBITE
TESTING, INC**

DRILL STEM TEST REPORT

American Warrior Inc.

3118 Cummings Rd.
Garden City, KS 67846

ATTN: Kevin Timson

5-23s-32w-Finney,KS

O'Brate-Finney #7-5

Job Ticket: 56599

DST#: 1

Test Start: 2015.03.09 @ 20:51:00

GENERAL INFORMATION:

Formation: **Pawnee**

Deviated: No Whipstock: ft (KB)

Time Tool Opened: 00:40:45

Time Test Ended: 04:28:30

Interval: 4445.00 ft (KB) To 4474.00 ft (KB) (TVD)

Total Depth: 4474.00 ft (KB) (TVD)

Hole Diameter: 7.88 inches Hole Condition: Good

Test Type: Conventional Bottom Hole (Initial)

Tester: Cornelio Landa III

Unit No: 67

Reference Elevations: 2864.00 ft (KB)

2853.00 ft (CF)

KB to GR/CF: 11.00 ft

Serial #: 8969 Inside

Press@RunDepth: psig @ 4446.00 ft (KB)

Start Date: 2015.03.09

End Date:

2015.03.10

Start Time: 20:51:05

End Time:

04:28:14

Capacity: 8000.00 psig

Last Calib.: 2015.03.10

Time On Btm:

Time Off Btm:

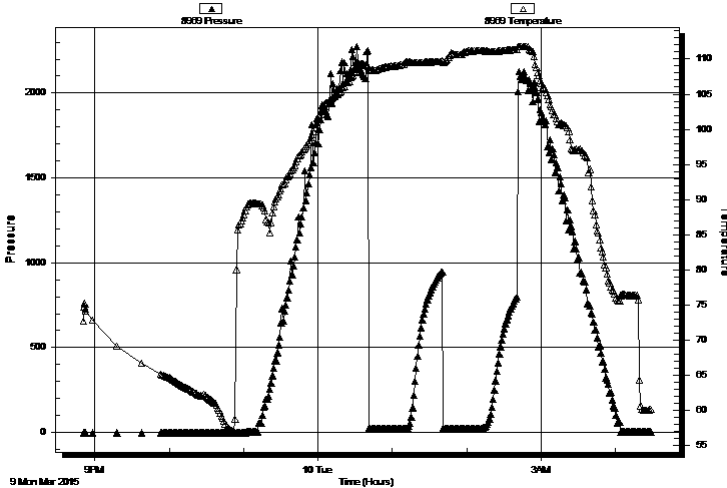
TEST COMMENT: IF: Weak surface blow

IS: No return

FF: No blow

FS: No return

Pressure vs. Time



PRESSURE SUMMARY

Time (Min.)	Pressure (psig)	Temp (deg F)	Annotation

Recovery

Length (ft)	Description	Volume (bbl)
5.00	Mud 100m w/traces of oil	0.07

Gas Rates

	Choke (inches)	Pressure (psig)	Gas Rate (Mcf/d)



**TRILOBITE
TESTING, INC**

DRILL STEM TEST REPORT

TOOL DIAGRAM

American Warrior Inc.

5-23s-32w-Finney,KS

3118 Cummings Rd.
Garden City, KS 67846

O'Brate-Finney #7-5

Job Ticket: 56599

DST#: 1

ATTN: Kevin Timson

Test Start: 2015.03.09 @ 20:51:00

Tool Information

Drill Pipe:	Length: 4425.00 ft	Diameter: 3.80 inches	Volume: 62.07 bbl	Tool Weight: 2500.00 lb
Heavy Wt. Pipe:	Length: 0.00 ft	Diameter: 0.00 inches	Volume: 0.00 bbl	Weight set on Packer: 28000.00 lb
Drill Collar:	Length: 0.00 ft	Diameter: 0.00 inches	Volume: 0.00 bbl	Weight to Pull Loose: 10000.00 lb
			<u>Total Volume: 62.07 bbl</u>	Tool Chased 0.00 ft
Drill Pipe Above KB:	7.00 ft			String Weight: Initial 60000.00 lb
Depth to Top Packer:	4445.00 ft			Final 60000.00 lb
Depth to Bottom Packer:	ft			
Interval between Packers:	29.00 ft			
Tool Length:	56.00 ft			
Number of Packers:	2	Diameter: 6.75 inches		

Tool Comments:

Tool Description

Tool Description	Length (ft)	Serial No.	Position	Depth (ft)	Accum. Lengths
Change Over Sub	1.00			4419.00	
Shut In Tool	5.00			4424.00	
Hydraulic tool	5.00			4429.00	
Jars	5.00			4434.00	
Safety Joint	2.00			4436.00	
Packer	5.00			4441.00	27.00 Bottom Of Top Packer
Packer	4.00			4445.00	
Stubb	1.00			4446.00	
Recorder	0.00	8969	Inside	4446.00	
Recorder	0.00	8968	Outside	4446.00	
Perforations	25.00			4471.00	
Bullnose	3.00			4474.00	29.00 Bottom Packers & Anchor

Total Tool Length: 56.00



**TRILOBITE
TESTING, INC**

DRILL STEM TEST REPORT

FLUID SUMMARY

American Warrior Inc.

5-23s-32w-Finney,KS

3118 Cummings Rd.
Garden City, KS 67846

O'Brate-Finney #7-5

Job Ticket: 56599

DST#: 1

ATTN: Kevin Timson

Test Start: 2015.03.09 @ 20:51:00

Mud and Cushion Information

Mud Type: Gel Chem

Cushion Type:

Oil API:

deg API

Mud Weight: 9.00 lb/gal

Cushion Length:

ft

Water Salinity:

ppm

Viscosity: 53.00 sec/qt

Cushion Volume:

bbbl

Water Loss: 7.18 in³

Gas Cushion Type:

Resistivity: 0.00 ohm.m

Gas Cushion Pressure:

psig

Salinity: 2100.00 ppm

Filter Cake: 1.00 inches

Recovery Information

Recovery Table

Length ft	Description	Volume bbl
5.00	Mud 100m w/traces of oil	0.070

Total Length: 5.00 ft Total Volume: 0.070 bbl

Num Fluid Samples: 0

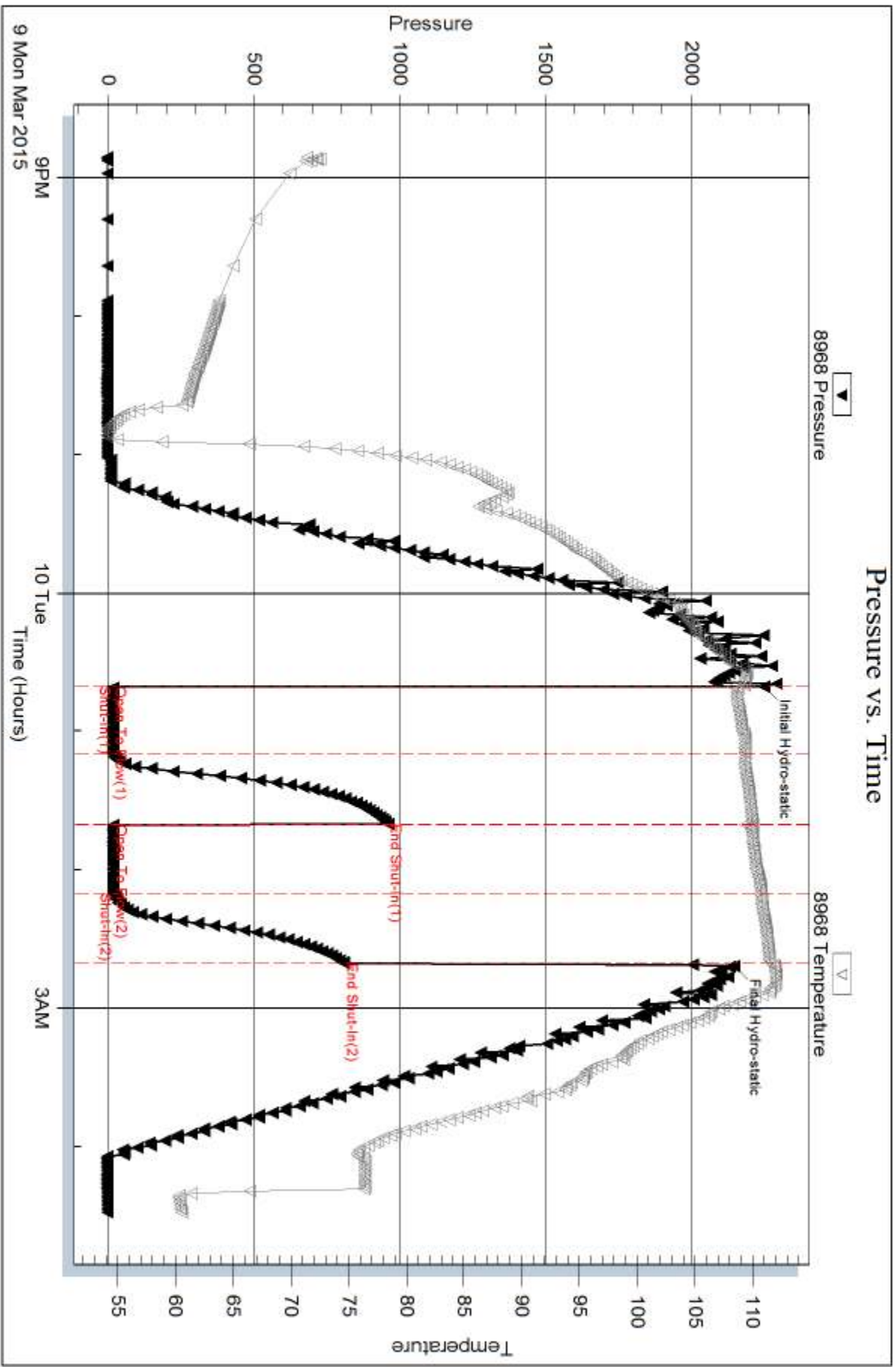
Num Gas Bombs: 0

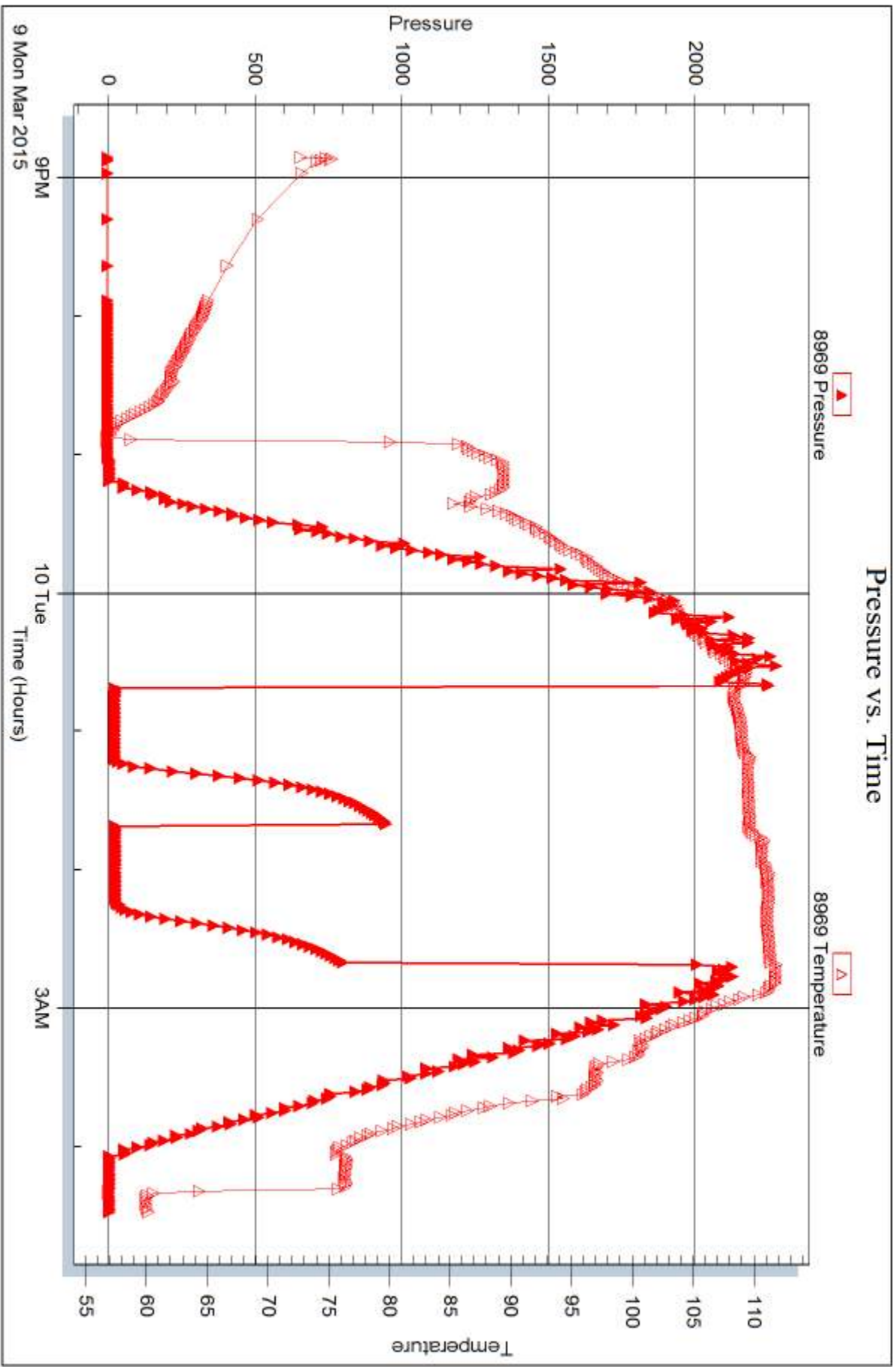
Serial #:

Laboratory Name:

Laboratory Location:

Recovery Comments:







DRILL STEM TEST REPORT

Prepared For: **American Warrior Inc.**

3118 Cummings Rd.
Garden City, KS 67846

ATTN: Kevin Timson

O'Brate-Finney #7-5

5-23s-32w-Finney,KS

Start Date: 2015.03.11 @ 03:56:00

End Date: 2015.03.11 @ 12:12:30

Job Ticket #: 56600 DST #: 2

Trilobite Testing, Inc
1515 Commerce Parkway Hays, KS 67601
ph: 785-625-4778 fax: 785-625-5620

Printed: 2015.03.16 @ 13:14:42



**TRILOBITE
TESTING, INC**

DRILL STEM TEST REPORT

American Warrior Inc.
3118 Cummings Rd.
Garden City, KS 67846
ATTN: Kevin Timson

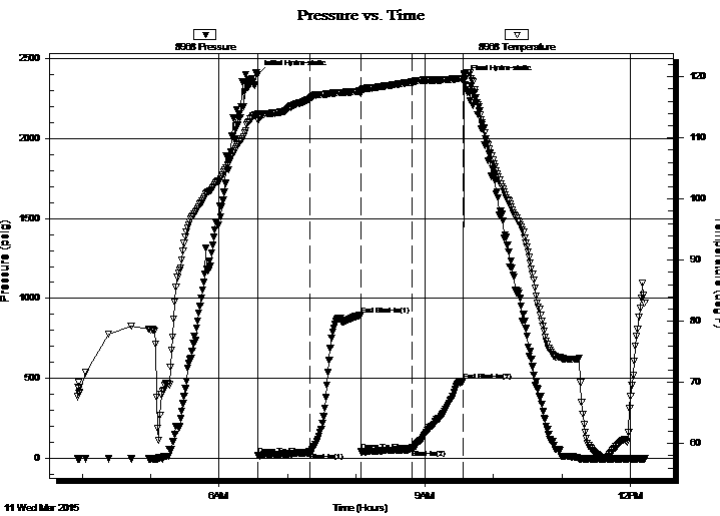
5-23s-32w-Finney,KS
O'Brate-Finney #7-5
Job Ticket: 56600 **DST#: 2**
Test Start: 2015.03.11 @ 03:56:00

GENERAL INFORMATION:

Formation: **St. Louis**
Deviated: No Whipstock: ft (KB)
Time Tool Opened: 06:34:00
Time Test Ended: 12:12:30
Test Type: Conventional Bottom Hole (Reset)
Tester: Cornelio Landa III
Unit No: 67
Interval: **4760.00 ft (KB) To 4780.00 ft (KB) (TVD)**
Reference Elevations: 2864.00 ft (KB)
Total Depth: 4780.00 ft (KB) (TVD) 2853.00 ft (CF)
Hole Diameter: 7.88 inches Hole Condition: Good KB to GR/CF: 11.00 ft

Serial #: 8968 Outside
Press@RunDepth: 55.60 psig @ 4762.00 ft (KB) Capacity: 8000.00 psig
Start Date: 2015.03.11 End Date: 2015.03.11 Last Calib.: 2015.03.11
Start Time: 03:56:05 End Time: 12:12:29 Time On Btm: 2015.03.11 @ 06:33:45
Time Off Btm: 2015.03.11 @ 09:34:30

TEST COMMENT: IF: Strong surface blow built to BOB in 45 min.
IS: Bled off in 2 min.- Weak surface blow back built to 1 1/4"
FF: 2". Immediately-built to BOB in 3 min.
FS: Bled off in 2 min.-Weak surface blow back built to 7"



PRESSURE SUMMARY

Time (Min.)	Pressure (psig)	Temp (deg F)	Annotation
0	2398.35	113.91	Initial Hydro-static
1	17.85	112.92	Open To Flow (1)
46	35.40	116.44	Shut-In(1)
90	896.29	117.68	End Shut-In(1)
91	45.17	117.32	Open To Flow (2)
135	55.60	119.16	Shut-In(2)
180	481.80	119.74	End Shut-In(2)
181	2368.51	120.35	Final Hydro-static

Recovery

Length (ft)	Description	Volume (bbl)
30.00	Mco & G 15m 35o 50g	0.42
94.00	Mcg & O 10m 15g 75o	1.32
0.00	GIP=909	0.00

* Recovery from multiple tests

Gas Rates

Choke (inches)	Pressure (psig)	Gas Rate (Mcf/d)



TRILOBITE TESTING, INC

DRILL STEM TEST REPORT

American Warrior Inc.
 3118 Cummings Rd.
 Garden City, KS 67846
 ATTN: Kevin Timson

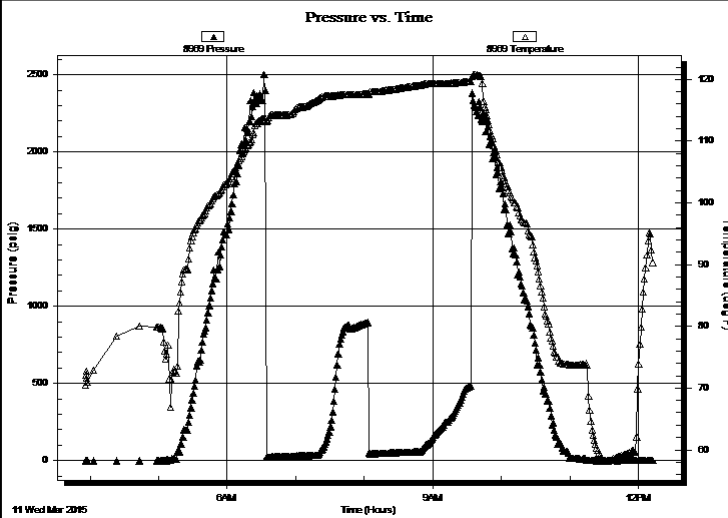
5-23s-32w-Finney,KS
O'Brate-Finney #7-5
 Job Ticket: 56600 **DST#: 2**
 Test Start: 2015.03.11 @ 03:56:00

GENERAL INFORMATION:

Formation: **St. Louis**
 Deviated: No Whipstock: ft (KB)
 Time Tool Opened: 06:34:00
 Time Test Ended: 12:12:30
 Interval: **4760.00 ft (KB) To 4780.00 ft (KB) (TVD)**
 Total Depth: 4780.00 ft (KB) (TVD)
 Hole Diameter: 7.88 inches Hole Condition: Good
 Test Type: Conventional Bottom Hole (Reset)
 Tester: Cornelio Landa III
 Unit No: 67
 Reference Elevations: 2864.00 ft (KB)
 2853.00 ft (CF)
 KB to GR/CF: 11.00 ft

Serial #: 8969 Inside
 Press@RunDepth: psig @ 4762.00 ft (KB) Capacity: 8000.00 psig
 Start Date: 2015.03.11 End Date: 2015.03.11 Last Calib.: 2015.03.11
 Start Time: 03:56:05 End Time: 12:12:29 Time On Btm:
 Time Off Btm:

TEST COMMENT: IF: Strong surface blow built to BOB in 45 min.
 IS: Bled off in 2 min.- Weak surface blow back built to 1 1/4"
 FF: 2". Immediately-built to BOB in 3 min.
 FS: Bled off in 2 min.-Weak surface blow back built to 7"



PRESSURE SUMMARY			
Time (Min.)	Pressure (psig)	Temp (deg F)	Annotation

Recovery		
Length (ft)	Description	Volume (bbl)
30.00	Mco & G 15m 35o 50g	0.42
94.00	Mcg & O 10m 15g 75o	1.32
0.00	GIP=909	0.00

Gas Rates			
	Choke (inches)	Pressure (psig)	Gas Rate (Mcf/d)

* Recovery from multiple tests



**TRILOBITE
TESTING, INC.**

DRILL STEM TEST REPORT

TOOL DIAGRAM

American Warrior Inc.

5-23s-32w-Finney,KS

3118 Cummings Rd.
Garden City, KS 67846

O'Brate-Finney #7-5

Job Ticket: 56600

DST#: 2

ATTN: Kevin Timson

Test Start: 2015.03.11 @ 03:56:00

Tool Information

Drill Pipe:	Length: 4740.00 ft	Diameter: 3.80 inches	Volume: 66.49 bbl	Tool Weight: 2500.00 lb
Heavy Wt. Pipe:	Length: 0.00 ft	Diameter: 0.00 inches	Volume: 0.00 bbl	Weight set on Packer: 26000.00 lb
Drill Collar:	Length: 0.00 ft	Diameter: 0.00 inches	Volume: 0.00 bbl	Weight to Pull Loose: 10000.00 lb
			<u>Total Volume: 66.49 bbl</u>	Tool Chased 0.00 ft
Drill Pipe Above KB:	7.00 ft			String Weight: Initial 62000.00 lb
Depth to Top Packer:	4760.00 ft			Final 60000.00 lb
Depth to Bottom Packer:	ft			
Interval between Packers:	20.00 ft			
Tool Length:	47.00 ft			
Number of Packers:	2	Diameter: 6.75 inches		

Tool Comments:

Tool Description

Tool Description	Length (ft)	Serial No.	Position	Depth (ft)	Accum. Lengths
Change Over Sub	1.00			4734.00	
Shut In Tool	5.00			4739.00	
Hydraulic tool	5.00			4744.00	
Jars	5.00			4749.00	
Safety Joint	2.00			4751.00	
Packer	5.00			4756.00	27.00 Bottom Of Top Packer
Packer	4.00			4760.00	
Stubb	1.00			4761.00	
Perforations	1.00			4762.00	
Recorder	0.00	8969	Inside	4762.00	
Recorder	0.00	8968	Outside	4762.00	
Perforations	15.00			4777.00	
Bullnose	3.00			4780.00	20.00 Bottom Packers & Anchor

Total Tool Length: 47.00



**TRILOBITE
TESTING, INC**

DRILL STEM TEST REPORT

FLUID SUMMARY

American Warrior Inc.

5-23s-32w-Finney,KS

3118 Cummings Rd.
Garden City, KS 67846

O'Brate-Finney #7-5

Job Ticket: 56600

DST#: 2

ATTN: Kevin Timson

Test Start: 2015.03.11 @ 03:56:00

Mud and Cushion Information

Mud Type: Gel Chem

Cushion Type:

Oil API:

deg API

Mud Weight: 9.00 lb/gal

Cushion Length:

ft

Water Salinity:

ppm

Viscosity: 62.00 sec/qt

Cushion Volume:

bbbl

Water Loss: 7.58 in³

Gas Cushion Type:

Resistivity: 0.00 ohm.m

Gas Cushion Pressure:

psig

Salinity: 2700.00 ppm

Filter Cake: 1.00 inches

Recovery Information

Recovery Table

Length ft	Description	Volume bbl
30.00	Mco & G 15m 35o 50g	0.421
94.00	Mcg & O 10m 15g 75o	1.319
0.00	GIP=909	0.000

Total Length: 124.00 ft

Total Volume: 1.740 bbl

Num Fluid Samples: 0

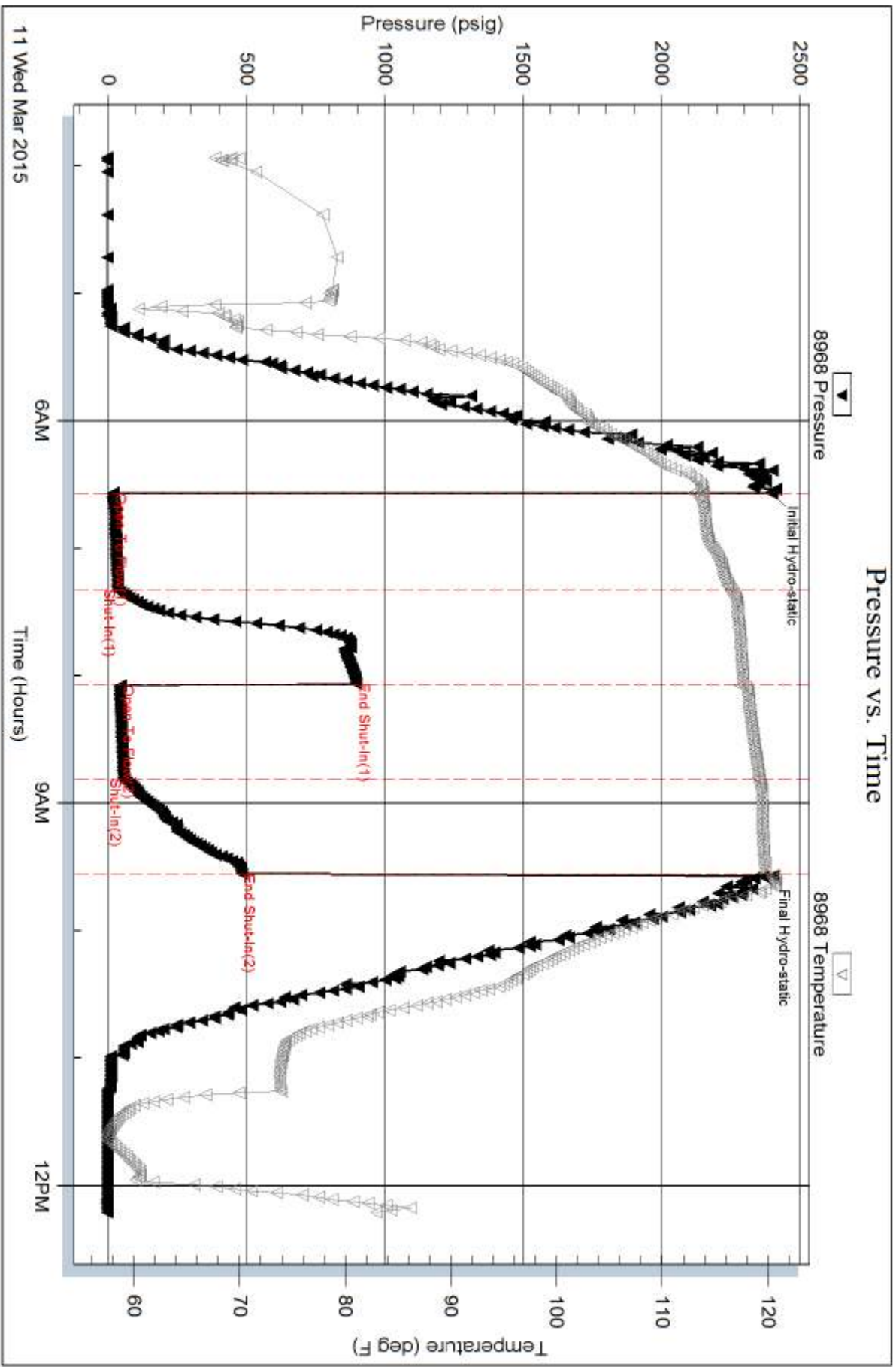
Num Gas Bombs: 0

Serial #:

Laboratory Name:

Laboratory Location:

Recovery Comments:



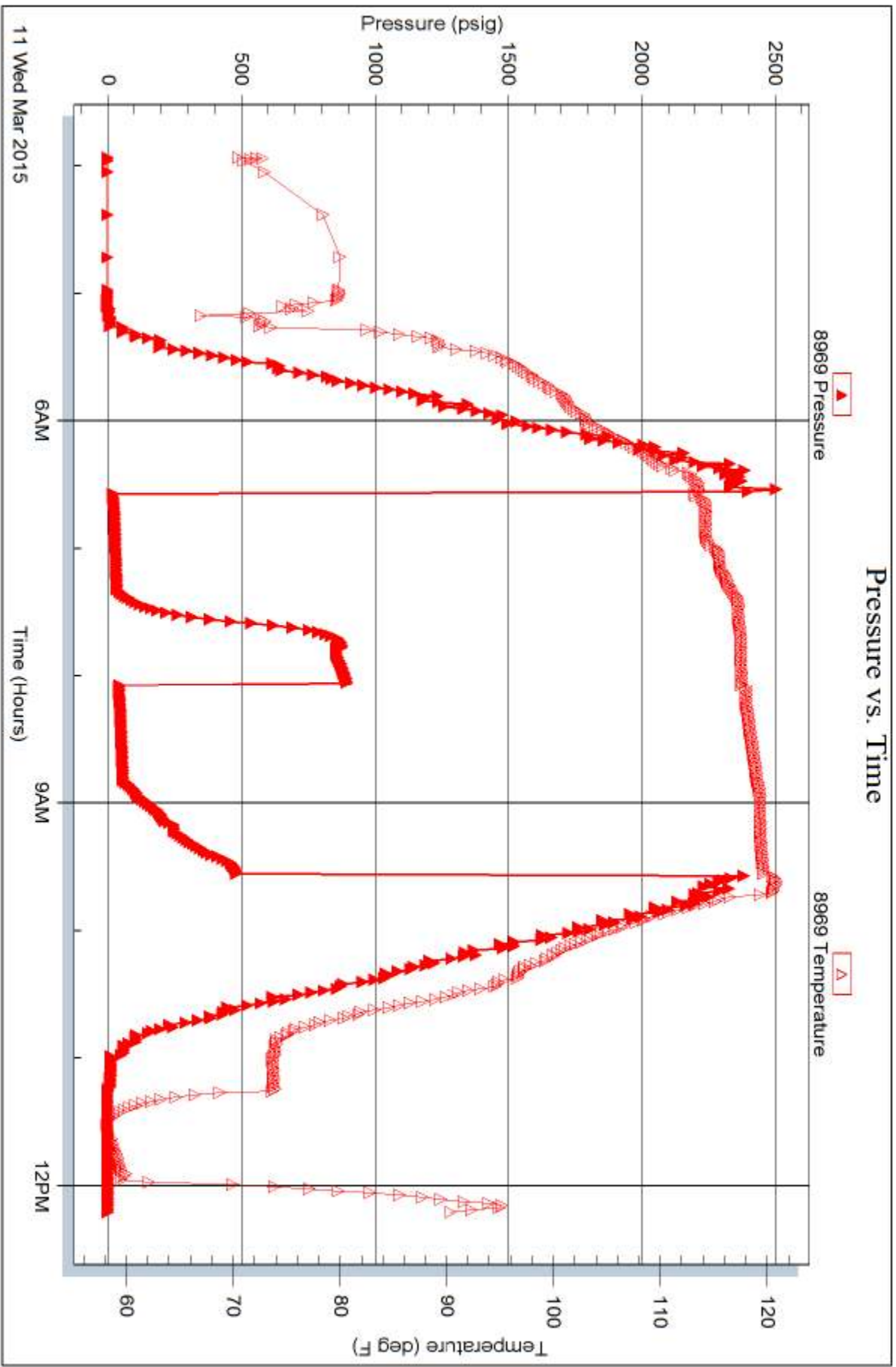
Serial #: 8969

Inside

American Warrior Inc.

OBrate-Finney #7.5

DST Test Number: 2



Trilobite Testing, Inc

Ref. No: 56600

Printed: 2015.03.16 @ 13:14:44



TRILOBITE TESTING INC.

1515 Commerce Parkway • Hays, Kansas 67601

Test Ticket

NO. 56599

4/10

Well Name & No. O'Brake Finney # 7-5 Test No. 1 Date 3-9-15
 Company American Warrior Inc. Elevation 2864 KB 2853 GL
 Address 3118 Cummings Rd - Garden City, KS 67846
 Co. Rep / Geo. Kevin Tomson Rig Duke #10
 Location: Sec. 5 Twp. 23-S Rge. 32 Co. Finney State KS

Interval Tested 4445 - 4474 Zone Tested Pawnee
 Anchor Length 29' Drill Pipe Run 4425 Mud Wt. 9.4
 Top Packer Depth 4441 Drill Collars Run 0 Vis 53
 Bottom Packer Depth 4445 Wt. Pipe Run 0 WL 7.2
 Total Depth 4474 Chlorides 2100 ppm System LCM #4

Blow Description IF: Weak surface Blow
~~ISF: No Return~~
FF: No Blow
~~FSI: No Return~~

Rec	Feet of	%gas	%oil	%water	%mud
Rec	Feet of	%gas	%oil	%water	%mud
Rec <u>5</u>	Feet of <u>mud w/ traces of oil</u>	%gas	%oil	%water <u>100</u>	%mud
Rec	Feet of	%gas	%oil	%water	%mud
Rec	Feet of	%gas	%oil	%water	%mud

Rec Total 5 BHT 112 Gravity — API RW — @ — ° F Chlorides — ppm

(A) Initial Hydrostatic 2248 Test 1150 T-On Location 20:50
 (B) First Initial Flow 17 Jars 250 T-Started 20:51
 (C) First Final Flow 17 Safety Joint MC 75 T-Open 00:40
 (D) Initial Shut-In 959 Circ Sub — T-Pulled 02:40
 (E) Second Initial Flow 19 Hourly Standby — T-Out 04:28
 (F) Second Final Flow 19 Mileage 70 RT X 2 Comments —
 (G) Final Shut-In 809 Sampler 70+70
 (H) Final Hydrostatic 2147 Straddle — Ruined Shale Packer —
 Shale Packer — Ruined Packer —
 Extra Packer — Extra Copies —
 Extra Recorder — Sub Total 0
 Day Standby — Total 1615
 Accessibility — MP/DST Disc't —
 Sub Total 1615

Initial Open 30
 Initial Shut-In 30
 Final Flow 30
 Final Shut-In 30

Approved By _____ Our Representative [Signature]

Trilobite Testing Inc. shall not be liable for damaged of any kind of the property or personnel of the one for whom a test is made, or for any loss suffered or sustained, directly or indirectly, through the use of its equipment, or its statements or opinion concerning the results of any test, tools lost or damaged in the hole shall be paid for at cost by the party for whom the test is made.



TRIOBITE TESTING INC.

1515 Commerce Parkway • Hays, Kansas 67601

Test Ticket

NO. **56600**

Well Name & No. O'Brater-Finney #75 Test No. 2 Date 3-11-15
 Company American Warrior Inc. Elevation 2864 KB 2853 GL
 Address 3118 Cummings Rd - Garden City, KS 67846
 Co. Rep / Geo. Kevin Timson Rig Duke #10
 Location: Sec. 5 Twp. 23-S Rge. 32-W Co. Finney State KS

Interval Tested 4760' - 4780' Zone Tested St. Louis
 Anchor Length 20' Drill Pipe Run 4740' Mud Wt. 9.2
 Top Packer Depth 4756' Drill Collars Run Ø Vis 6.0
 Bottom Packer Depth 4760' Wt. Pipe Run Ø WL 7.6
 Total Depth 4780' Chlorides 2700 ppm System LCM 1/2

Blow Description IF: Strong surface blowback - Built to B.o.b. in 45 min.
ISI: Bled off in 2 min. - Weak surface blowback - Built to 1 1/4" Blowback
FF: 2 in. Immediately - Built to B.o.b. in 3 min.
FSI: Bled off in 2 min. - Weak surface blowback - Built to 7 in. of Blowback

Rec	Feet of	%gas	%oil	%water	%mud
30	MCO + G	50	35		15
94	MCG + O	15	75		10
	909 GIP				

Rec Total 124' BHT 170 Gravity _____ API RW _____ @ _____ °F Chlorides _____ ppm

(A) Initial Hydrostatic 2398 Test 1150
 (B) First Initial Flow 18 Jars 250
 (C) First Final Flow 35 Safety Joint 75
 (D) Initial Shut-In 896 Circ Sub N/C
 (E) Second Initial Flow 45 Hourly Standby _____
 (F) Second Final Flow 56 Mileage 70
 (G) Final Shut-In 482 Sampler _____
 (H) Final Hydrostatic 2369 Straddle _____
 Shale Packer _____
 Extra Packer _____
 Extra Recorder _____
 Day Standby _____
 Accessibility _____

Initial Open 45
 Initial Shut-In 45
 Final Flow 45
 Final Shut-In 45

Sub Total 1545

T-On Location 03:56
 T-Started 03:56
 T-Open 06:34
 T-Pulled 09:34
 T-Out 12:12
 Comments _____
 Ruined Shale Packer _____
 Ruined Packer _____
 Extra Copies _____
 Sub Total 0
 Total 1545
 MP/DST Disc't _____

Approved By [Signature] Our Representative [Signature]

Triobite Testing Inc. shall not be liable for damaged of any kind of the property or personnel of the one for whom a test is made, or for any loss suffered or sustained, directly or indirectly, through the use of its equipment, or its statements of opinion concerning the results of any test, tools lost or damaged in the hole shall be paid for at cost by the party for whom the test is made.