



TRILOBITE TESTING, INC.

DRILL STEM TEST REPORT

Berexco LLC.
 2020 N. Bramblewood
 Wichita Ks, 67206
 ATTN: Pete Vollmer

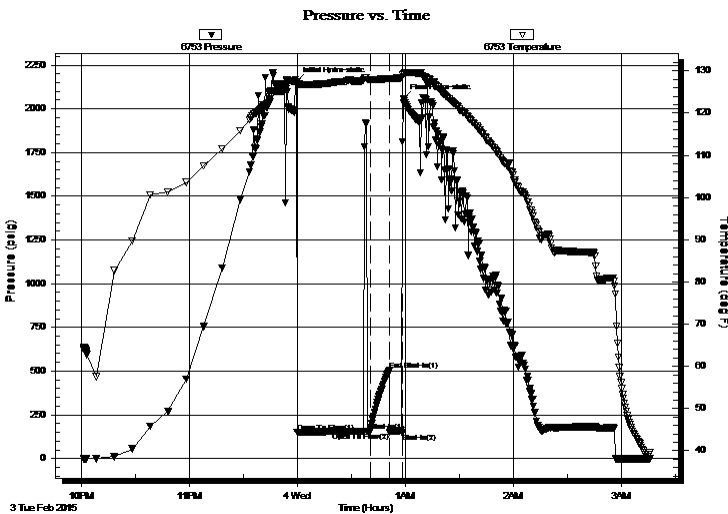
19-1S-37W
Owens - Trust #2-19
 Job Ticket: 61088 **DST#: 1**
 Test Start: 2015.02.03 @ 22:01:00

GENERAL INFORMATION:

Formation: **KCL - 'B'**
 Deviated: No Whipstock: ft (KB)
 Time Tool Opened: 23:59:45
 Time Test Ended: 03:15:45
 Interval: **4214.00 ft (KB) To 4274.00 ft (KB) (TVD)**
 Total Depth: 4274.00 ft (KB) (TVD)
 Hole Diameter: 7.88 inches Hole Condition: Good
 Test Type: Conventional Bottom Hole (Initial)
 Tester: Royal Fisher
 Unit No: #54
 Reference Elevations: 3236.00 ft (KB)
 3223.00 ft (CF)
 KB to GR/CF: 13.00 ft

Serial #: 6753 Outside
 Press @ Run Depth: 154.70 psig @ 4215.00 ft (KB) Capacity: 8000.00 psig
 Start Date: 2015.02.03 End Date: 2015.02.04 Last Calib.: 2015.02.04
 Start Time: 22:01:05 End Time: 03:15:44 Time On Btm: 2015.02.03 @ 23:59:30
 Time Off Btm: 2015.02.04 @ 00:59:00

TEST COMMENT: 40 - IF - Surface blow started w with a weak blow then died off in 7 mins. Flushed tool before shut in.
 10 - ISI - No Return
 20 - FF - No Surface blow



PRESSURE SUMMARY

Time (Min.)	Pressure (psig)	Temp (deg F)	Annotation
0	2155.63	127.38	Initial Hydro-static
1	149.74	126.63	Open To Flow (1)
41	154.70	127.95	Shut-In(1)
52	503.08	128.17	End Shut-In(1)
52	149.45	127.99	Open To Flow (2)
59	147.02	128.34	Shut-In(2)
60	2059.11	129.30	Final Hydro-static

Recovery

Length (ft)	Description	Volume (bbl)
257.00	Mud - 100M	1.26

Gas Rates

	Choke (inches)	Pressure (psig)	Gas Rate (Mcf/d)



TRILOBITE TESTING, INC.

DRILL STEM TEST REPORT

Berexco LLC.

19-1S-37W

2020 N. Bramblewood
Wichita Ks, 67206

Owens - Trust #2-19

Job Ticket: 61088

DST#: 1

ATTN: Pete Vollmer

Test Start: 2015.02.03 @ 22:01:00

GENERAL INFORMATION:

Formation: **KCL - 'B'**

Deviated: No Whipstock: ft (KB)

Time Tool Opened: 23:59:45

Time Test Ended: 03:15:45

Test Type: Conventional Bottom Hole (Initial)

Tester: Royal Fisher

Unit No: #54

Interval: **4214.00 ft (KB) To 4274.00 ft (KB) (TVD)**

Total Depth: 4274.00 ft (KB) (TVD)

Hole Diameter: 7.88 inches Hole Condition: Good

Reference Elevations: 3236.00 ft (KB)

3223.00 ft (CF)

KB to GR/CF: 13.00 ft

Serial #: 8368

Press @ Run Depth: psig @ ft (KB)

Start Date: 2015.02.03

End Date:

2015.02.04

Start Time: 22:01:05

End Time:

03:15:29

Capacity: 8000.00 psig

Last Calib.: 2015.02.04

Time On Btm:

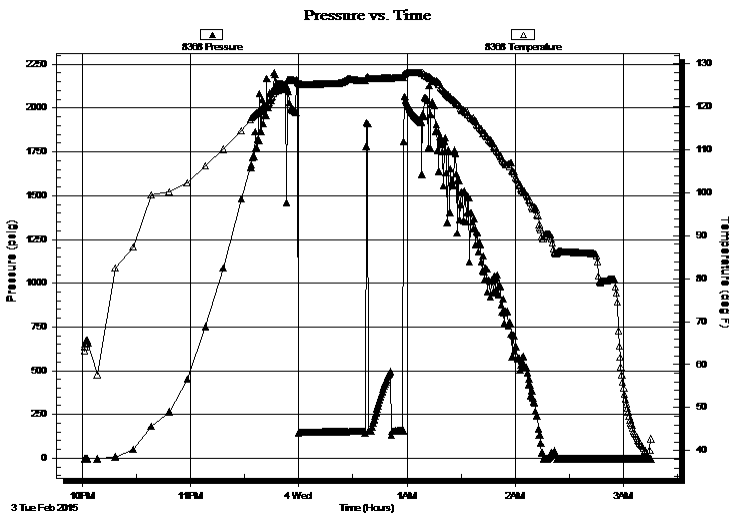
Time Off Btm:

TEST COMMENT: 40 - IF - Surface blow started w with a weak blow then died off in 7 mins. Flushed tool before shut in.

10 - ISI - No Return

20 - FF - No Surface blow

PRESSURE SUMMARY



Time (Min.)	Pressure (psig)	Temp (deg F)	Annotation

Recovery

Length (ft)	Description	Volume (bbl)
257.00	Mud - 100M	1.26

Gas Rates

Choke (inches)	Pressure (psig)	Gas Rate (Mcf/d)

