



TRILOBITE TESTING, INC.

DRILL STEM TEST REPORT

Berexco LLC.
 2020 N. Bramblewood
 Wichita Ks, 67206
 ATTN: Pete Vollmer

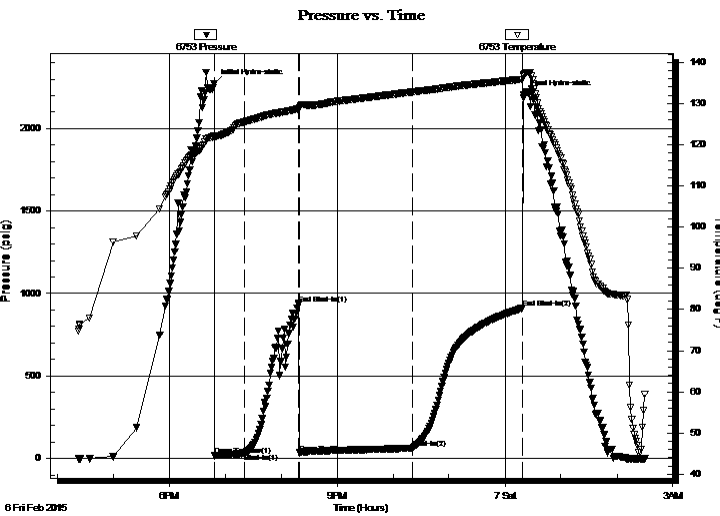
19-1S-37W
Owens - Trust #2-19
 Job Ticket: 61091 **DST#: 4**
 Test Start: 2015.02.06 @ 16:23:00

GENERAL INFORMATION:

Formation: **Pawnee**
 Deviated: No Whipstock: ft (KB)
 Test Type: Conventional Bottom Hole (Initial)
 Time Tool Opened: 18:48:30 Tester: Royal Fisher
 Time Test Ended: 02:29:45 Unit No: #54
 Interval: **4566.00 ft (KB) To 4618.00 ft (KB) (TVD)** Reference Elevations: 3236.00 ft (KB)
 Total Depth: 4618.00 ft (KB) (TVD) 3223.00 ft (CF)
 Hole Diameter: 7.88 inches Hole Condition: Good KB to GR/CF: 13.00 ft

Serial #: 6753 Outside
 Press @ Run Depth: 62.02 psig @ 4567.00 ft (KB) Capacity: 8000.00 psig
 Start Date: 2015.02.06 End Date: 2015.02.07 Last Calib.: 2015.02.07
 Start Time: 16:23:05 End Time: 02:29:45 Time On Btm: 2015.02.06 @ 18:48:15
 Time Off Btm: 2015.02.07 @ 00:20:15

TEST COMMENT: 30 - IF - Surface blow built up to 2"
 60 - ISI - No Return
 120 - FF - Surface blow started right away and built up to 8 1/2"
 120 - FSI - No Return



PRESSURE SUMMARY

Time (Min.)	Pressure (psig)	Temp (deg F)	Annotation
0	2270.54	122.23	Initial Hydro-static
1	17.43	121.59	Open To Flow (1)
33	30.51	125.51	Shut-In(1)
91	939.06	128.66	End Shut-In(1)
92	33.62	128.79	Open To Flow (2)
213	62.02	132.80	Shut-In(2)
331	910.97	135.88	End Shut-In(2)
332	2207.30	137.02	Final Hydro-static

Recovery

Length (ft)	Description	Volume (bbl)
95.00	OCM - 60M - 40o	0.47

Gas Rates

Choke (inches)	Pressure (psig)	Gas Rate (Mcf/d)



**TRILOBITE
TESTING, INC.**

DRILL STEM TEST REPORT

FLUID SUMMARY

Berexco LLC.

19-1S-37W

2020 N. Bramblewood
Wichita Ks, 67206

Owens - Trust #2-19

Job Ticket: 61091

DST#: 4

ATTN: Pete Vollmer

Test Start: 2015.02.06 @ 16:23:00

Mud and Cushion Information

Mud Type: Gel Chem

Cushion Type:

Oil API:

deg API

Mud Weight: 10.00 lb/gal

Cushion Length:

ft

Water Salinity:

ppm

Viscosity: 50.00 sec/qt

Cushion Volume:

bbbl

Water Loss: 7.60 in³

Gas Cushion Type:

Resistivity: 0.00 ohm.m

Gas Cushion Pressure:

psig

Salinity: 600.00 ppm

Filter Cake: 2.00 inches

Recovery Information

Recovery Table

Length ft	Description	Volume bbl
95.00	OCM - 60M - 40o	0.467

Total Length: 95.00 ft Total Volume: 0.467 bbl

Num Fluid Samples: 0

Num Gas Bombs: 0

Serial #:

Laboratory Name:

Laboratory Location:

Recovery Comments:

