



**TRILOBITE
TESTING, INC.**

DRILL STEM TEST REPORT

Venture Resources, Inc
2255 S Wadsworth STE 205
Lakewood, CO 80227
ATTN: Brad Rine/Myc Smith

Sec 14-10s-20w Rooks, KS
Moore #6
Job Ticket: 62459 **DST#: 1**
Test Start: 2015.03.16 @ 10:39:00

GENERAL INFORMATION:

Formation: **LKC "H-L"**
Deviated: No Whipstock: ft (KB)
Time Tool Opened: 13:44:50
Time Test Ended: 18:11:30
Interval: 3606.00 ft (KB) To 3700.00 ft (KB) (TVD)
Total Depth: 3700.00 ft (KB) (TVD)
Hole Diameter: 7.88 inches Hole Condition: Fair

Test Type: Conventional Bottom Hole (Initial)
Tester: Phillip Gage
Unit No: 77
Reference Elevations: 2223.00 ft (KB)
2216.00 ft (CF)
KB to GR/CF: 7.00 ft

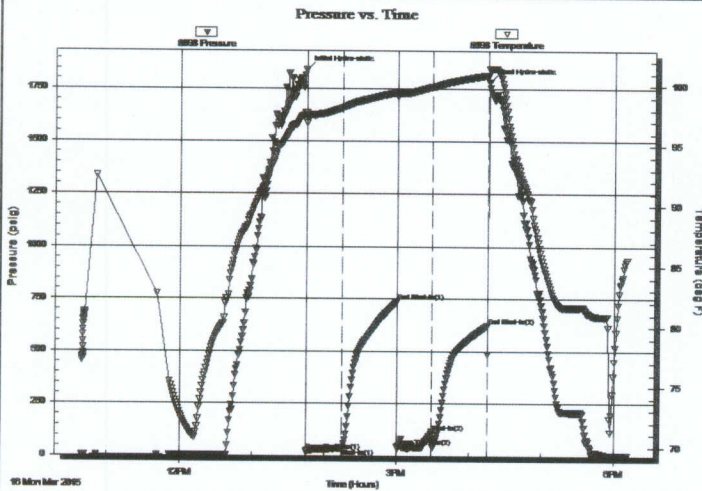
Serial #: 8898

Outside

Press@RunDepth: 114.79 psig @ 3607.00 ft (KB)
Start Date: 2015.03.16 End Date: 2015.03.16
Start Time: 10:39:01 End Time: 18:11:30

Capacity: 8000.00 psig
Last Calib.: 2015.03.16
Time On Btm: 2015.03.16 @ 13:44:40
Time Off Btm: 2015.03.16 @ 16:16:00

TEST COMMENT: 30-IF-Built to 2 1/4"
45-ISI-No Return
30-FF-Built to 1 1/2"
45-FSI-No Return



PRESSURE SUMMARY

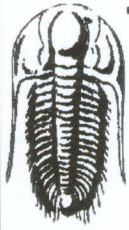
Time (Min.)	Pressure (psig)	Temp (deg F)	Annotation
0	1843.71	97.82	Initial Hydro-static
1	22.04	96.89	Open To Flow (1)
30	36.87	98.23	Shut-In(1)
75	737.41	99.49	End Shut-In(1)
76	42.69	99.11	Open To Flow (2)
104	114.79	99.94	Shut-In(2)
150	625.54	100.93	End Shut-In(2)
152	1784.33	101.47	Final Hydro-static

Recovery

Length (ft)	Description	Volume (bbl)
50.00	SOCM, 10%o, 90%m	0.44

Gas Rates

	Choke (inches)	Pressure (psig)	Gas Rate (Mcf/d)



TRILOBITE
TESTING, INC.

DRILL STEM TEST REPORT

FLUID SUMMARY

Venture Resources, Inc
2255 S Wadsworth STE 205
Lakewood, CO 80227
ATTN: Brad Rine/Myc Smith

Sec 14-10s-20w Rooks, KS
Moore #6
Job Ticket: 62459 **DST#: 1**
Test Start: 2015.03.16 @ 10:39:00

Mud and Cushion Information

Mud Type: Gel Chem	Cushion Type:	Oil API:	deg API
Mud Weight: 9.00 lb/gal	Cushion Length: ft	Water Salinity:	ppm
Viscosity: 57.00 sec/qt	Cushion Volume: bbl		
Water Loss: 6.80 in ³	Gas Cushion Type:		
Resistivity: ohm.m	Gas Cushion Pressure: psig		
Salinity: 800.00 ppm			
Filter Cake: 6.00 inches			

Recovery Information

Recovery Table

Length ft	Description	Volume bbl
50.00	SOCM, 10%o, 90%m	0.437

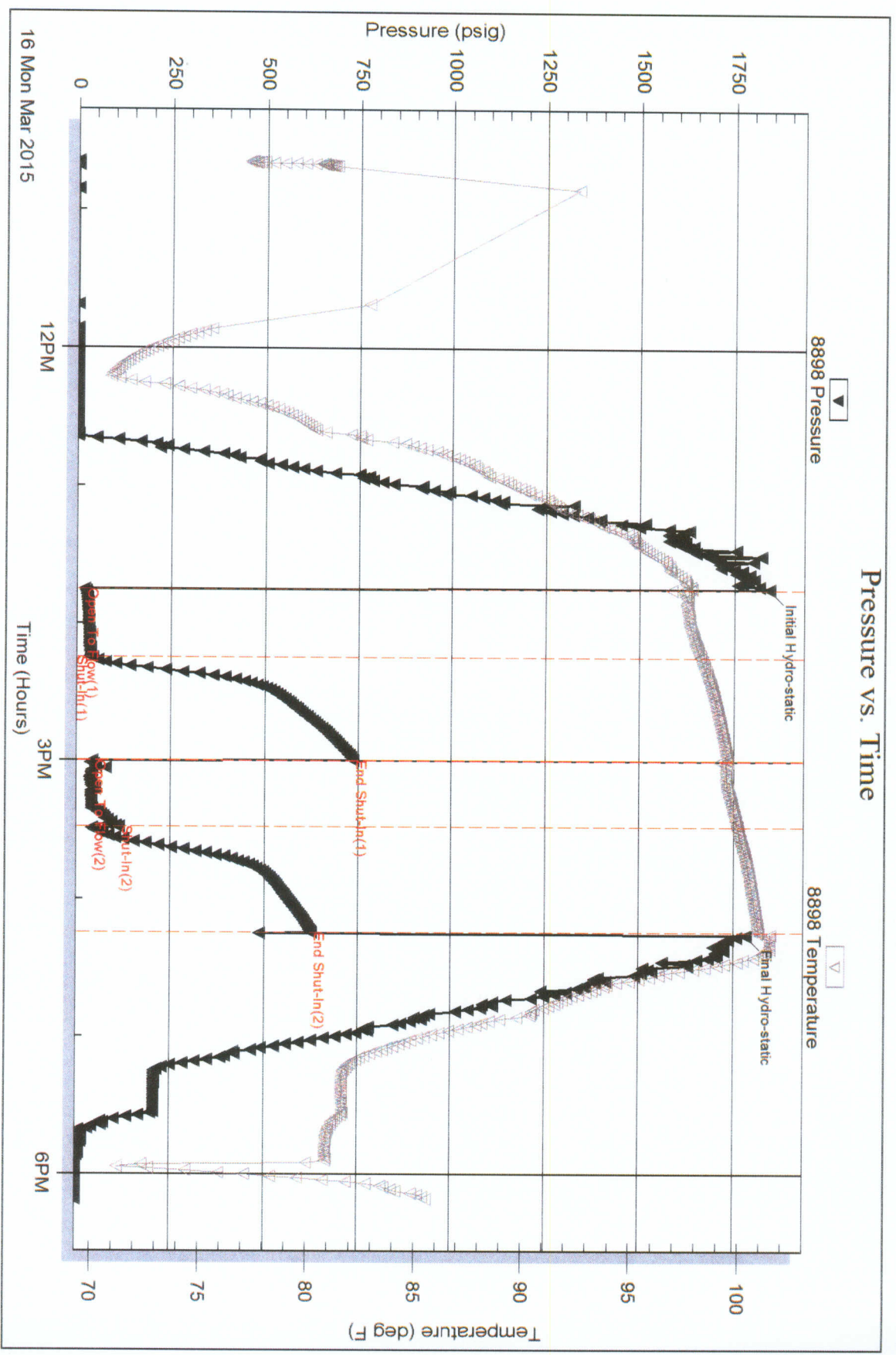
Total Length: 50.00 ft Total Volume: 0.437 bbl
Num Fluid Samples: 0 Num Gas Bombs: 0 Serial #:
Laboratory Name: Laboratory Location:
Recovery Comments:

Serial #: 8898

Outside Venture Resources, Inc

Mbore #6

DST Test Number: 1



Trilobite Testing, Inc

Ref. No: 62459

Printed: 2015.03.17 @ 00:18:55



**TRILOBITE
TESTING, INC**

DRILL STEM TEST REPORT

Venture Resources, Inc
2255 S Wadsworth STE 205
Lakewood, CO 80227
ATTN: Brad Rine/Myc Smith

Sec 14-10s-20w Rooks, KS

Moore #6

Job Ticket: 62460

DST#: 2

Test Start: 2015.03.17 @ 11:49:00

GENERAL INFORMATION:

Formation: **Arbuckle**
Deviated: No Whipstock: ft (KB)
Time Tool Opened: 15:18:40
Time Test Ended: 20:56:19
Interval: **3687.00 ft (KB) To 3775.00 ft (KB) (TVD)**
Total Depth: 3775.00 ft (KB) (TVD)
Hole Diameter: 7.88 inches Hole Condition: Fair

Test Type: Conventional Bottom Hole (Reset)
Tester: Phillip Gage
Unit No: 77
Reference Elevations: 2223.00 ft (KB)
2216.00 ft (CF)
KB to GR/CF: 7.00 ft

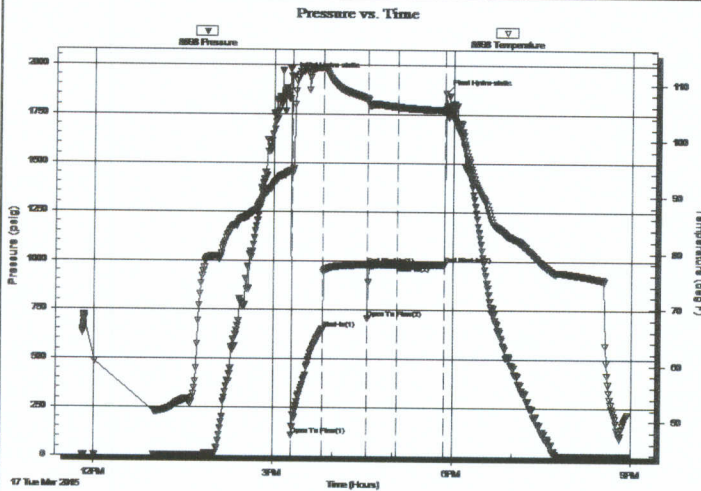
Serial #: 8898

Outside

Press@RunDepth: 980.14 psig @ 3688.00 ft (KB)
Start Date: 2015.03.17 End Date: 2015.03.17
Start Time: 11:49:01 End Time: 20:56:19

Capacity: 8000.00 psig
Last Calib.: 2015.03.17
Time On Btm: 2015.03.17 @ 15:18:20
Time Off Btm: 2015.03.17 @ 17:52:00

TEST COMMENT: 30-IF-BOB in 1 1/2 mins
45-ISI-Surface Return at 6 mins, died in 20 mins
30-FF-Built to 4", died back to 2 1/2"
45-FSI-No Return



PRESSURE SUMMARY

Time (Min.)	Pressure (psig)	Temp (deg F)	Annotation
0	1941.43	94.51	Initial Hydro-static
1	107.36	93.87	Open To Flow (1)
31	651.68	112.83	Shut-In(1)
76	979.07	107.41	End Shut-In(1)
77	703.33	107.23	Open To Flow (2)
106	980.14	105.97	Shut-In(2)
153	982.27	105.41	End Shut-In(2)
154	1857.92	105.58	Final Hydro-static

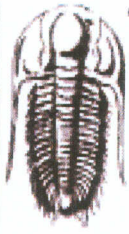
Recovery

Length (ft)	Description	Volume (bbl)
252.00	VSGOMCW, 5%g, 10%o, 10%m, 75%w	3.27
567.00	SGOMCW, 10%g, 10%o, 40%m, 40%w	7.95
315.00	SOGMCW, 10%o, 15%g, 20%m, 55%w	4.42
277.00	OMCW, 20%o, 40%m, 40%w	3.89

* Recovery from multiple tests

Gas Rates

	Choke (inches)	Pressure (psig)	Gas Rate (Mcf/d)



**TRILOBITE
TESTING, INC.**

DRILL STEM TEST REPORT

FLUID SUMMARY

Venture Resources, Inc

Sec 14-10s-20w Rooks, KS

2255 S Wadsworth STE 205
Lakewood, CO 80227

Moore #6

Job Ticket: 62460

DST#: 2

ATTN: Brad Rine/Myc Smith

Test Start: 2015.03.17 @ 11:49:00

Mud and Cushion Information

Mud Type: Gel Chem

Cushion Type:

Oil API:

deg API

Mud Weight: 9.00 lb/gal

Cushion Length:

ft

Water Salinity:

33000 ppm

Viscosity: 65.00 sec/qt

Cushion Volume:

bbl

Water Loss: 7.20 in³

Gas Cushion Type:

Resistivity: ohm.m

Gas Cushion Pressure:

psig

Salinity: 1900.00 ppm

Filter Cake: 5.00 inches

Recovery Information

Recovery Table

Length ft	Description	Volume bbl
252.00	VSGOMCW, 5%g, 10%o, 10%m, 75%w	3.271
567.00	SGOMCW, 10%g, 10%o, 40%m, 40%w	7.954
315.00	SOGMCW, 10%o, 15%g, 20%m, 55%w	4.419
277.00	OMCW, 20%o, 40%m, 40%w	3.886

Total Length: 1411.00 ft Total Volume: 19.530 bbl

Num Fluid Samples: 0

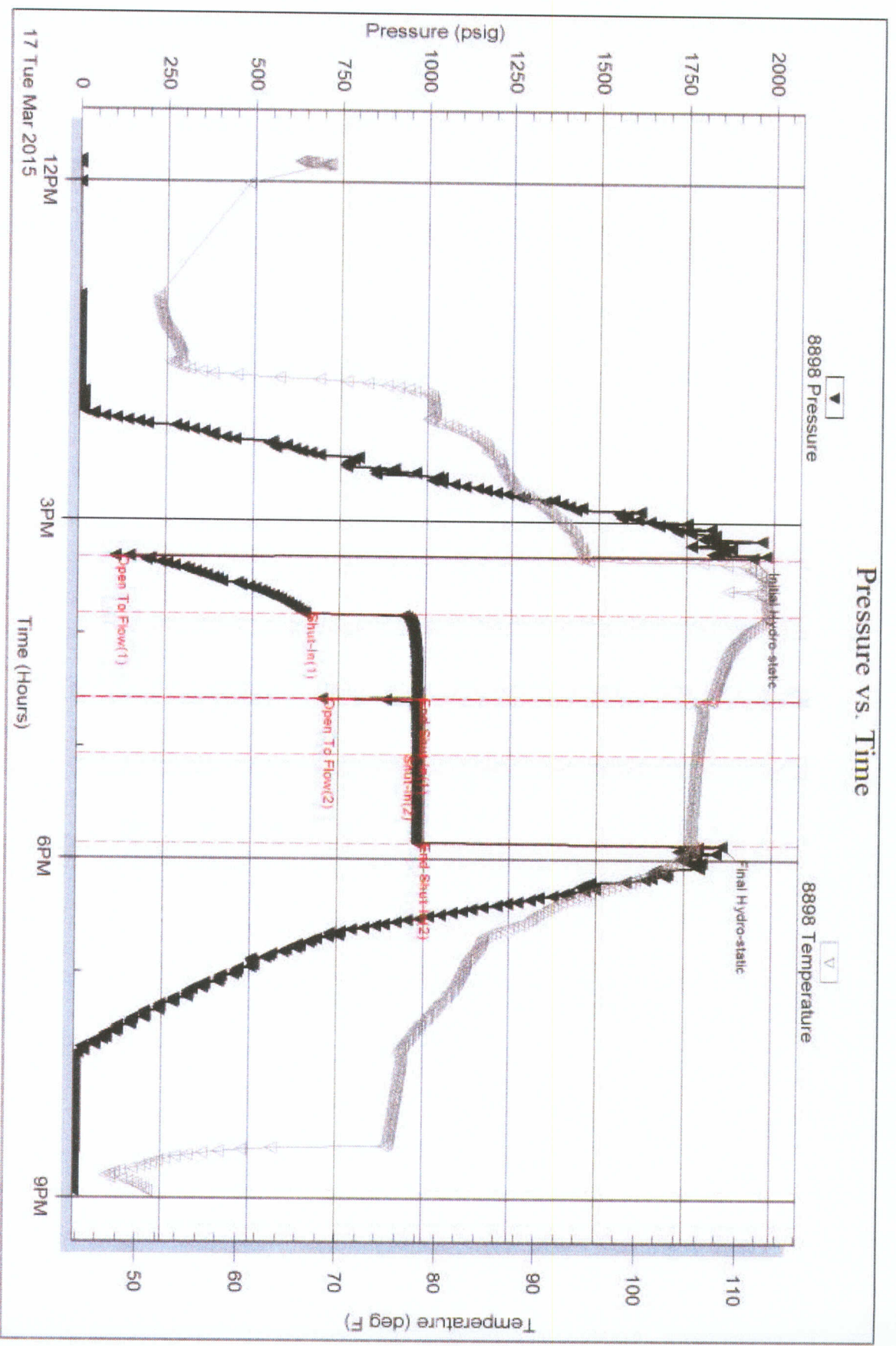
Num Gas Bombs: 0

Serial #:

Laboratory Name:

Laboratory Location:

Recovery Comments: .4 @ 40 degree = 33,000





**TRILOBITE
TESTING, INC**

DRILL STEM TEST REPORT

Venture Resources, Inc

2255 S Wadsworth STE 205
Lakewood, CO 80227

ATTN: Brad Rine/Myc Smith

Sec 14-10s-20w Rooks, KS

Moore #6

Job Ticket: 62461

DST#: 3

Test Start: 2015.03.18 @ 05:08:00

GENERAL INFORMATION:

Formation: **Arbuckle**

Deviated: No Whipstock: ft (KB)

Time Tool Opened: 08:09:20

Time Test Ended: 13:32:39

Interval: **3792.00 ft (KB) To 3806.00 ft (KB) (TVD)**

Total Depth: 3806.00 ft (KB) (TVD)

Hole Diameter: 7.88 inches Hole Condition: Fair

Test Type: Conventional Bottom Hole (Reset)

Tester: Phillip Gage

Unit No: 77

Reference Elevations: 2223.00 ft (KB)

2216.00 ft (CF)

KB to GR/CF: 7.00 ft

Serial #: 8898

Outside

Press@RunDepth: 822.59 psig @ 3793.00 ft (KB)

Start Date: 2015.03.18 End Date: 2015.03.18

Start Time: 05:08:01 End Time: 13:32:40

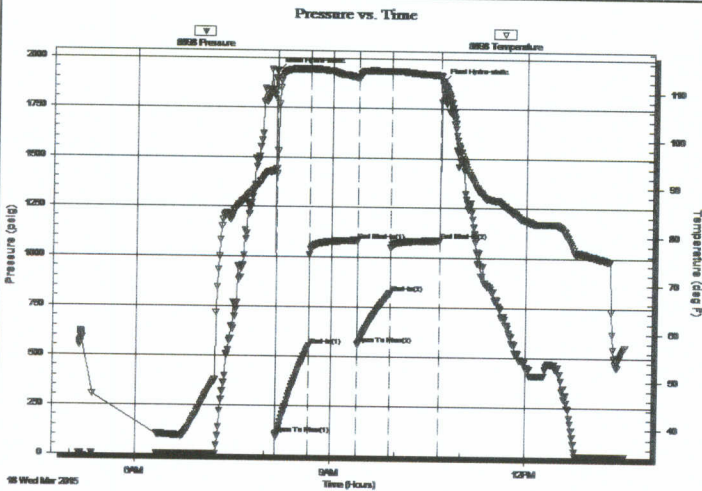
Capacity: 8000.00 psig

Last Calib.: 2015.03.18

Time On Btm: 2015.03.18 @ 08:09:10

Time Off Btm: 2015.03.18 @ 10:41:39

TEST COMMENT: 30-IF-BOB in 2 mins.
45-ISI-Surface Return at 35 mins
30-FF-BOB in 2 mins.
45-FSI-Weak Surface Return at 10 mins, died at 15 mins.



PRESSURE SUMMARY

Time (Min.)	Pressure (psig)	Temp (deg F)	Annotation
0	1932.99	93.87	Initial Hydro-static
1	103.97	92.76	Open To Flow (1)
31	550.78	114.56	Shut-In(1)
76	1082.84	112.96	End Shut-In(1)
76	562.69	112.72	Open To Flow (2)
106	822.59	114.25	Shut-In(2)
151	1083.90	113.48	End Shut-In(2)
153	1885.05	112.33	Final Hydro-static

Recovery

Length (ft)	Description	Volume (bbl)
1197.00	VSOMCW, 5%o, 10%m, 85%w	16.53
441.00	VSGOMCW, 5%g, 5%o, 80%w, 10%m	6.19
169.00	SGOMCW, 10%g, 20%o, 40%w, 30%m	2.37
30.00	O, 100% o	0.42

* Recovery from multiple tests

Gas Rates

Choke (inches)	Pressure (psig)	Gas Rate (Mcf/d)



**TRILOBITE
TESTING, INC**

DRILL STEM TEST REPORT

FLUID SUMMARY

Venture Resources, Inc

Sec 14-10s-20w Rooks, KS

2255 S Wadsworth STE 205
Lakewood, CO 80227

Moore #6

Job Ticket: 62461

DST#: 3

ATTN: Brad Rine/Myc Smith

Test Start: 2015.03.18 @ 05:08:00

Mud and Cushion Information

Mud Type: Gel Chem
Mud Weight: 9.00 lb/gal
Viscosity: 65.00 sec/qt
Water Loss: 7.20 in³
Resistivity: ohm.m
Salinity: 1900.00 ppm
Filter Cake: 5.00 inches

Cushion Type:
Cushion Length: ft
Cushion Volume: bbl
Gas Cushion Type:
Gas Cushion Pressure: psig

Oil API: 30 deg API
Water Salinity: 26000 ppm

Recovery Information

Recovery Table

Length ft	Description	Volume bbl
1197.00	VSOMCW, 5%o, 10%m, 85%w	16.527
441.00	VSGOMCW, 5%g, 5%o, 80%w, 10%m	6.186
169.00	SGOMCW, 10%g, 20%o, 40%w, 30%m	2.371
30.00	O, 100% o	0.421

Total Length: 1837.00 ft Total Volume: 25.505 bbl

Num Fluid Samples: 0

Num Gas Bombs: 0

Serial #:

Laboratory Name:

Laboratory Location:

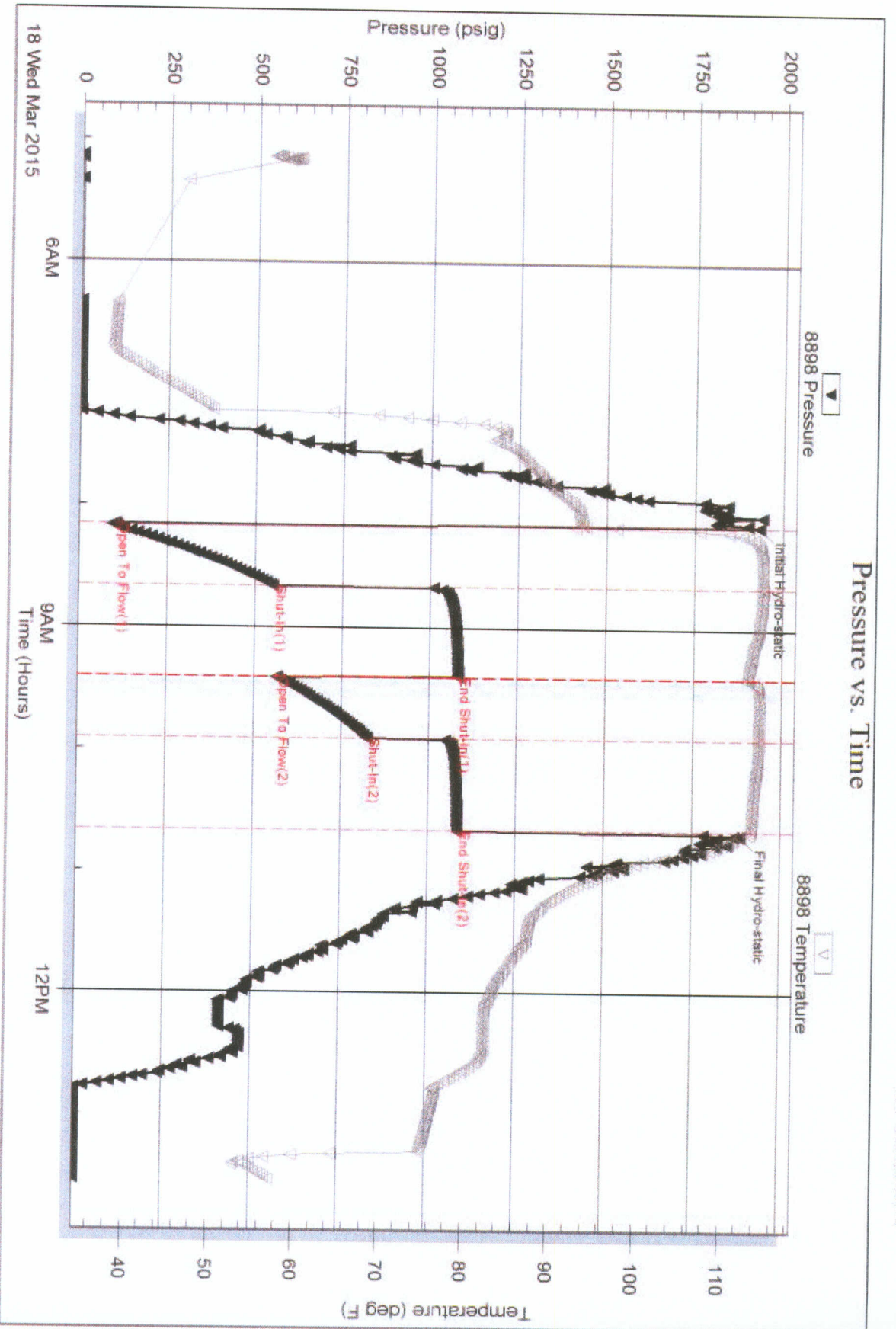
Recovery Comments: .4 @ 52 degrees = 26,000 Salinity

Serial #: 8898

Outside Venture Resources, Inc

Moore #6

DST Test Number: 3



Tripple Testing, Inc

Ref. No: 62461

Printed: 2015.03.18 @ 14:35:41