



TRILOBITE TESTING, INC.

DRILL STEM TEST REPORT

CMX Incorporated
 1700 N Waterfront Parkway
 Building 300B
 Wichita, Kansas 67206
 ATTN: Ken LaBlanc

35/16S/11W/Barton

Homolke #1-35

Job Ticket: 63027

DST#: 3

Test Start: 2015.03.22 @ 21:58:00

GENERAL INFORMATION:

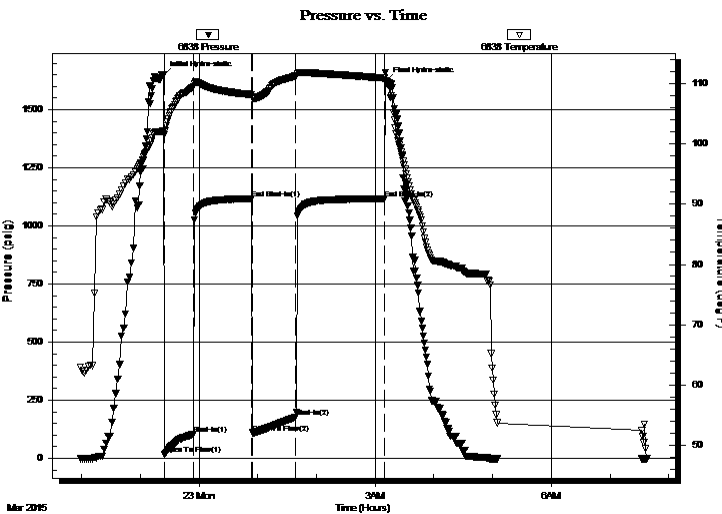
Formation: **Arbuckle**
 Deviated: No Whipstock: ft (KB)
 Time Tool Opened: 23:24:30
 Time Test Ended: 07:38:00
 Interval: **3352.00 ft (KB) To 3372.00 ft (KB) (TVD)**
 Total Depth: 3372.00 ft (KB) (TVD)
 Hole Diameter: 7.80 inches Hole Condition: Fair
 Test Type: Conventional Bottom Hole (Initial)
 Tester: Ken Swinney
 Unit No: 58 Great Bend/68
 Reference Elevations: 1932.00 ft (KB)
 1919.00 ft (CF)
 KB to GR/CF: 13.00 ft

Serial #: 6838

Inside

Press @ Run Depth: 177.94 psig @ 3368.00 ft (KB) Capacity: 8000.00 psig
 Start Date: 2015.03.22 End Date: 2015.03.23 Last Calib.: 2015.03.23
 Start Time: 21:59:00 End Time: 07:38:00 Time On Btm: 2015.03.22 @ 23:23:30
 Time Off Btm: 2015.03.23 @ 03:11:00

TEST COMMENT: 1ST Open 30 Minutes/Fair blow/Blow built to bottom of bucket in 19 minutes
 1ST Shut In 60 Minutes/No blow back
 2ND Open 45 Minutes/Fair blow/Blow built to bottom of bucket in 17 minutes
 2ND Shut In 90 Minutes/No blow back



PRESSURE SUMMARY

Time (Min.)	Pressure (psig)	Temp (deg F)	Annotation
0	1648.25	102.17	Initial Hydro-static
1	15.89	101.49	Open To Flow (1)
31	104.96	109.50	Shut-In(1)
91	1116.39	108.21	End Shut-In(1)
91	109.49	107.65	Open To Flow (2)
136	177.94	111.31	Shut-In(2)
226	1116.31	110.95	End Shut-In(2)
228	1620.63	110.47	Final Hydro-static

Recovery

Length (ft)	Description	Volume (bbl)
126.00	Muddy Oil	0.62
0.00	Mud 30% Oil 70%	0.00
346.00	Mud cut Gassy Oil	4.33
0.00	Mud 5% Gas 20% Oil 75%	0.00
0.00	157 feet of gas in pipe	0.00

Gas Rates

Choke (inches)	Pressure (psig)	Gas Rate (Mcf/d)



**TRILOBITE
TESTING, INC.**

DRILL STEM TEST REPORT

FLUID SUMMARY

CMX Incorporated

35/16S/11W/Barton

1700 N Waterfront Parkway
Building 300B
Wichita, Kansas 67206
ATTN: Ken LaBlanc

Homolke #1-35

Job Ticket: 63027

DST#: 3

Test Start: 2015.03.22 @ 21:58:00

Mud and Cushion Information

Mud Type: Gel Chem
Mud Weight: 9.00 lb/gal
Viscosity: 46.00 sec/qt
Water Loss: 8.99 in³
Resistivity: ohm.m
Salinity: 3900.00 ppm
Filter Cake: 1.00 inches

Cushion Type:
Cushion Length: ft
Cushion Volume: bbl
Gas Cushion Type:
Gas Cushion Pressure: psig

Oil API: deg API
Water Salinity: ppm

Recovery Information

Recovery Table

Length ft	Description	Volume bbl
126.00	Muddy Oil	0.620
0.00	Mud 30% Oil 70%	0.000
346.00	Mud cut Gassy Oil	4.326
0.00	Mud 5% Gas 20% Oil 75%	0.000
0.00	157 feet of gas in pipe	0.000

Total Length: 472.00 ft Total Volume: 4.946 bbl

Num Fluid Samples: 0

Num Gas Bombs: 0

Serial #:

Laboratory Name:

Laboratory Location:

Recovery Comments:

