



**TRILOBITE
TESTING, INC.**

DRILL STEM TEST REPORT

Berexco LLC
2020 N. Bramblewood
Wichita, KS, 67206
ATTN: Bryan Bynog

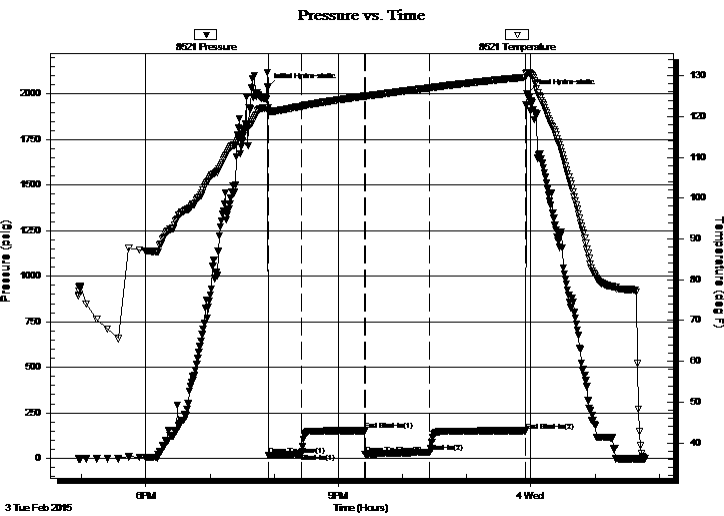
23-1S-36W / Rawlins
SDMS # 1-23
Job Ticket: 62149 **DST#: 1**
Test Start: 2015.02.03 @ 16:57:00

GENERAL INFORMATION:

Formation: **Oread**
Deviated: No Whipstock: ft (KB)
Time Tool Opened: 19:54:30
Time Test Ended: 01:47:00
Interval: **4110.00 ft (KB) To 4148.00 ft (KB) (TVD)**
Total Depth: 4148.00 ft (KB) (TVD)
Hole Diameter: 7.88 inches Hole Condition: Good
Test Type: Conventional Bottom Hole (Initial)
Tester: Donovan Baumann
Unit No: 66
Reference Elevations: 3313.00 ft (KB)
3302.00 ft (CF)
KB to GR/CF: 11.00 ft

Serial #: 8521 Inside
Press @ Run Depth: 35.74 psig @ 4111.00 ft (KB) Capacity: 8000.00 psig
Start Date: 2015.02.03 End Date: 2015.02.04 Last Calib.: 2015.02.04
Start Time: 16:57:05 End Time: 01:47:00 Time On Btm: 2015.02.03 @ 19:54:00
Time Off Btm: 2015.02.03 @ 23:56:30

TEST COMMENT: 30 - IF - No surface blow (In Diesel)
60 - ISI - No return
60 - FF - No surface blow
90 - FSI - No return



PRESSURE SUMMARY

Time (Min.)	Pressure (psig)	Temp (deg F)	Annotation
0	2037.48	122.05	Initial Hydro-static
1	17.60	121.14	Open To Flow (1)
31	26.65	122.49	Shut-In(1)
90	152.91	124.97	End Shut-In(1)
91	24.81	124.96	Open To Flow (2)
152	35.74	127.01	Shut-In(2)
241	152.18	129.64	End Shut-In(2)
243	2000.84	130.67	Final Hydro-static

Recovery

Length (ft)	Description	Volume (bbl)
10.00	Mud - 100M	0.05

Gas Rates

	Choke (inches)	Pressure (psig)	Gas Rate (Mcf/d)

