



DRILL STEM TEST REPORT

Prepared For: **American Warrior Inc**

PO Box 399
Garden City, KS 67846

ATTN: Jason Alm

Felder #3-13

13-20s-21w Ness,KS

Start Date: 2015.02.21 @ 20:32:00

End Date: 2015.02.22 @ 03:53:00

Job Ticket #: 62046 DST #: 1

Trilobite Testing, Inc
1515 Commerce Parkway Hays, KS 67601
ph: 785-625-4778 fax: 785-625-5620

Printed: 2015.02.23 @ 14:18:41



TRILOBITE TESTING, INC.

DRILL STEM TEST REPORT

American Warrior Inc
 PO Box 399
 Garden City, KS 67846
 ATTN: Jason Alm

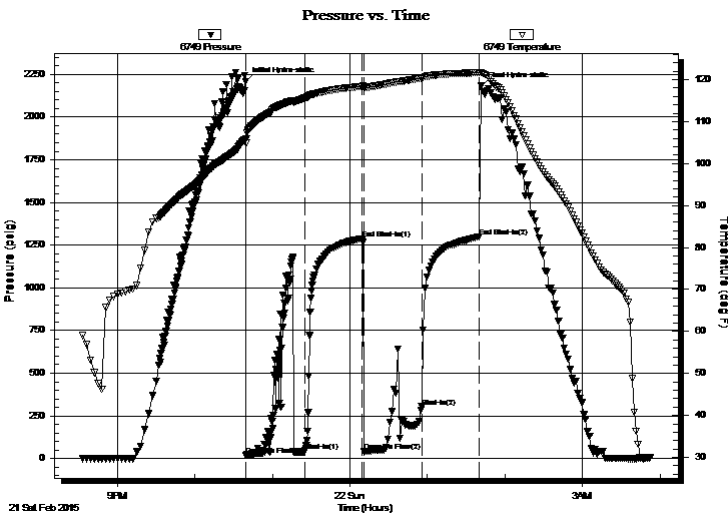
13-20s-21w Ness, KS
Felder #3-13
 Job Ticket: 62046 **DST#: 1**
 Test Start: 2015.02.21 @ 20:32:00

GENERAL INFORMATION:

Formation: **Mississippi**
 Deviated: No Whipstock: ft (KB)
 Time Tool Opened: 22:39:30
 Time Test Ended: 03:53:00
 Interval: **4370.00 ft (KB) To 4379.00 ft (KB) (TVD)**
 Total Depth: 4379.00 ft (KB) (TVD)
 Hole Diameter: 7.88 inches Hole Condition: Fair
 Test Type: Conventional Bottom Hole (Initial)
 Tester: Ken Swinney
 Unit No: 58
 Reference Elevations: 2224.00 ft (KB)
 2216.00 ft (CF)
 KB to GR/CF: 8.00 ft

Serial #: 6749 Inside
 Press@RunDepth: 302.87 psig @ 4375.00 ft (KB) Capacity: 8000.00 psig
 Start Date: 2015.02.21 End Date: 2015.02.22 Last Calib.: 2015.02.21
 Start Time: 20:33:00 End Time: 03:53:00 Time On Btm: 2015.02.21 @ 22:39:10
 Time Off Btm: 2015.02.22 @ 01:41:30

TEST COMMENT: IFP 45 Minutes Weak blow built to 5" with surging
 ISI 45 Minutes No blow back
 FFP 45 Minutes Weak blow with surging built to 1/2" - Flush tool good surge - Blow died to surging surface blow
 FSI 45 Minutes No blow back



PRESSURE SUMMARY

Time (Min.)	Pressure (psig)	Temp (deg F)	Annotation
0	2209.66	105.85	Initial Hydro-static
1	20.18	104.81	Open To Flow (1)
46	40.12	115.59	Shut-In(1)
91	1287.88	118.40	End Shut-In(1)
92	41.78	118.10	Open To Flow (2)
137	302.87	120.37	Shut-In(2)
181	1297.53	121.66	End Shut-In(2)
183	2181.14	121.72	Final Hydro-static

Recovery

Length (ft)	Description	Volume (bbl)
45.00	Mud cut Oil/Mud 10% Oil 90%	0.36
60.00	Oily Mud/Oil 20% Mud 80%	0.84

Gas Rates

	Choke (inches)	Pressure (psig)	Gas Rate (Mcf/d)



**TRILOBITE
TESTING, INC**

DRILL STEM TEST REPORT

American Warrior Inc
PO Box 399
Garden City, KS 67846
ATTN: Jason Alm

13-20s-21w Ness, KS
Felder #3-13
Job Ticket: 62046 **DST#: 1**
Test Start: 2015.02.21 @ 20:32:00

GENERAL INFORMATION:

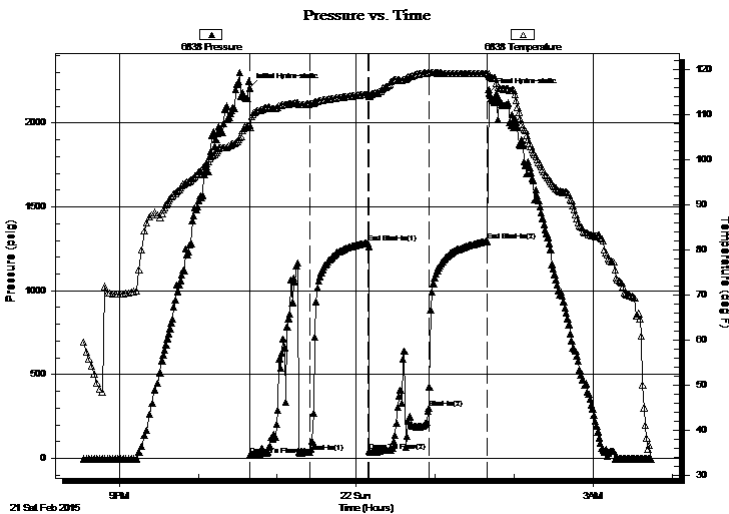
Formation: **Mississippi**
Deviated: No Whipstock: ft (KB)
Time Tool Opened: 22:39:30
Time Test Ended: 03:53:00
Interval: **4370.00 ft (KB) To 4379.00 ft (KB) (TVD)**
Total Depth: 4379.00 ft (KB) (TVD)
Hole Diameter: 7.88 inches Hole Condition: Fair
Test Type: Conventional Bottom Hole (Initial)
Tester: Ken Swinney
Unit No: 58
Reference Elevations: 2224.00 ft (KB)
2216.00 ft (CF)
KB to GR/CF: 8.00 ft

Serial #: 6838

Outside

Press@RunDepth: 1295.18 psig @ 4376.00 ft (KB) Capacity: 8000.00 psig
Start Date: 2015.02.21 End Date: 2015.02.22 Last Calib.: 1899.12.30
Start Time: 20:33:00 End Time: 03:44:00 Time On Btm: 2015.02.21 @ 22:39:00
Time Off Btm: 2015.02.22 @ 01:41:00

TEST COMMENT: IFP 45 Minutes Weak blow built to 5" with surging
ISI 45 Minutes No blow back
FFP 45 Minutes Weak blow with surging built to 1/2" - Flush tool good surge - Blow died to surging surface blow
FSI 45 Minutes No blow back



PRESSURE SUMMARY

Time (Min.)	Pressure (psig)	Temp (deg F)	Annotation
0	2208.61	107.69	Initial Hydro-static
1	18.69	107.12	Open To Flow (1)
46	37.10	112.33	Shut-In(1)
90	1285.35	114.50	End Shut-In(1)
91	43.99	114.04	Open To Flow (2)
136	300.47	119.23	Shut-In(2)
181	1295.18	119.04	End Shut-In(2)
182	2178.91	118.45	Final Hydro-static

Recovery

Length (ft)	Description	Volume (bbl)
45.00	Mud cut Oil/Mud 10% Oil 90%	0.36
60.00	Oily Mud/Oil 20% Mud 80%	0.84

Gas Rates

	Choke (inches)	Pressure (psig)	Gas Rate (Mcf/d)



**TRILOBITE
TESTING, INC**

DRILL STEM TEST REPORT

TOOL DIAGRAM

American Warrior Inc
PO Box 399
Garden City, KS 67846
ATTN: Jason Alm

13-20s-21w Ness, KS
Felder #3-13
Job Ticket: 62046 **DST#: 1**
Test Start: 2015.02.21 @ 20:32:00

Tool Information

Drill Pipe:	Length: 4344.00 ft	Diameter: 3.80 inches	Volume: 60.93 bbl	Tool Weight: 2000.00 lb
Heavy Wt. Pipe:	Length: 0.00 ft	Diameter: 0.00 inches	Volume: 0.00 bbl	Weight set on Packer: 20000.00 lb
Drill Collar:	Length: 30.00 ft	Diameter: 2.25 inches	Volume: 0.15 bbl	Weight to Pull Loose: 62000.00 lb
		Total Volume: 61.08 bbl		Tool Chased 0.00 ft
Drill Pipe Above KB:	31.00 ft			String Weight: Initial 58000.00 lb
Depth to Top Packer:	4370.00 ft			Final 58000.00 lb
Depth to Bottom Packer:	ft			
Interval between Packers:	9.00 ft			
Tool Length:	36.00 ft			
Number of Packers:	2	Diameter: 6.75 inches		

Tool Comments:

Tool Description	Length (ft)	Serial No.	Position	Depth (ft)	Accum. Lengths
-------------------------	--------------------	-------------------	-----------------	-------------------	-----------------------

Shut-In Tool	5.00			4348.00	
Hydraulic tool	5.00			4353.00	
Jars	5.00			4358.00	
Safety Joint	2.00			4360.00	
Top Packer	5.00			4365.00	
Packer	5.00			4370.00	27.00 Bottom Of Top Packer
Anchor	4.00			4374.00	
Recorder	1.00	6749	Inside	4375.00	
Recorder	1.00	6838	Outside	4376.00	
Bullnose	3.00			4379.00	9.00 Anchor Tool
Total Tool Length:	36.00				



**TRILOBITE
TESTING, INC**

DRILL STEM TEST REPORT

FLUID SUMMARY

American Warrior Inc
PO Box 399
Garden City, KS 67846
ATTN: Jason Alm

13-20s-21w Ness,KS
Felder #3-13
Job Ticket: 62046 **DST#: 1**
Test Start: 2015.02.21 @ 20:32:00

Mud and Cushion Information

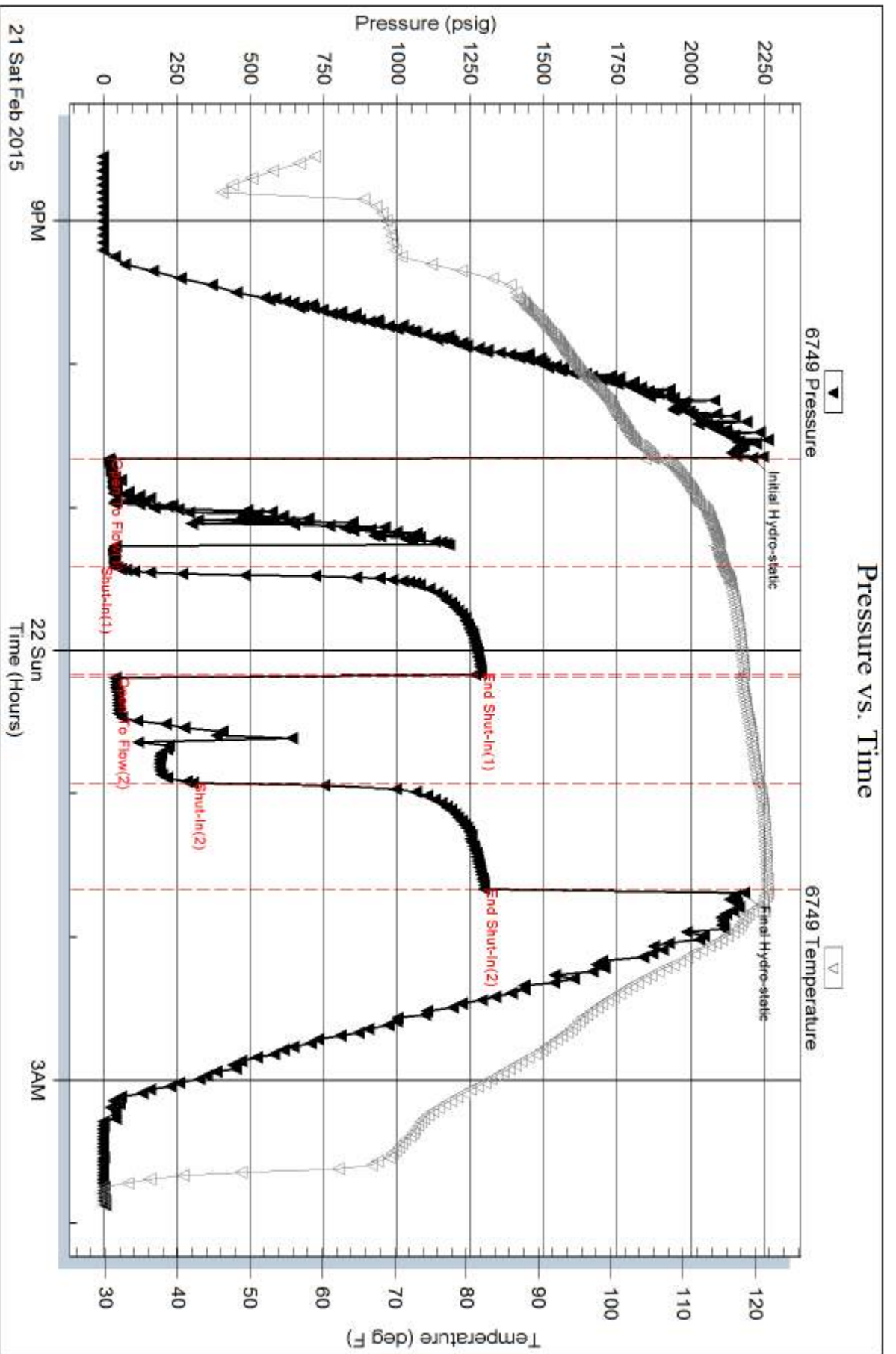
Mud Type: Gel Chem	Cushion Type:	Oil API:	deg API
Mud Weight: 9.00 lb/gal	Cushion Length: ft	Water Salinity:	ppm
Viscosity: 51.00 sec/qt	Cushion Volume: bbl		
Water Loss: 7.98 in ³	Gas Cushion Type:		
Resistivity: ohm.m	Gas Cushion Pressure: psig		
Salinity: 5200.00 ppm			
Filter Cake: 1.00 inches			

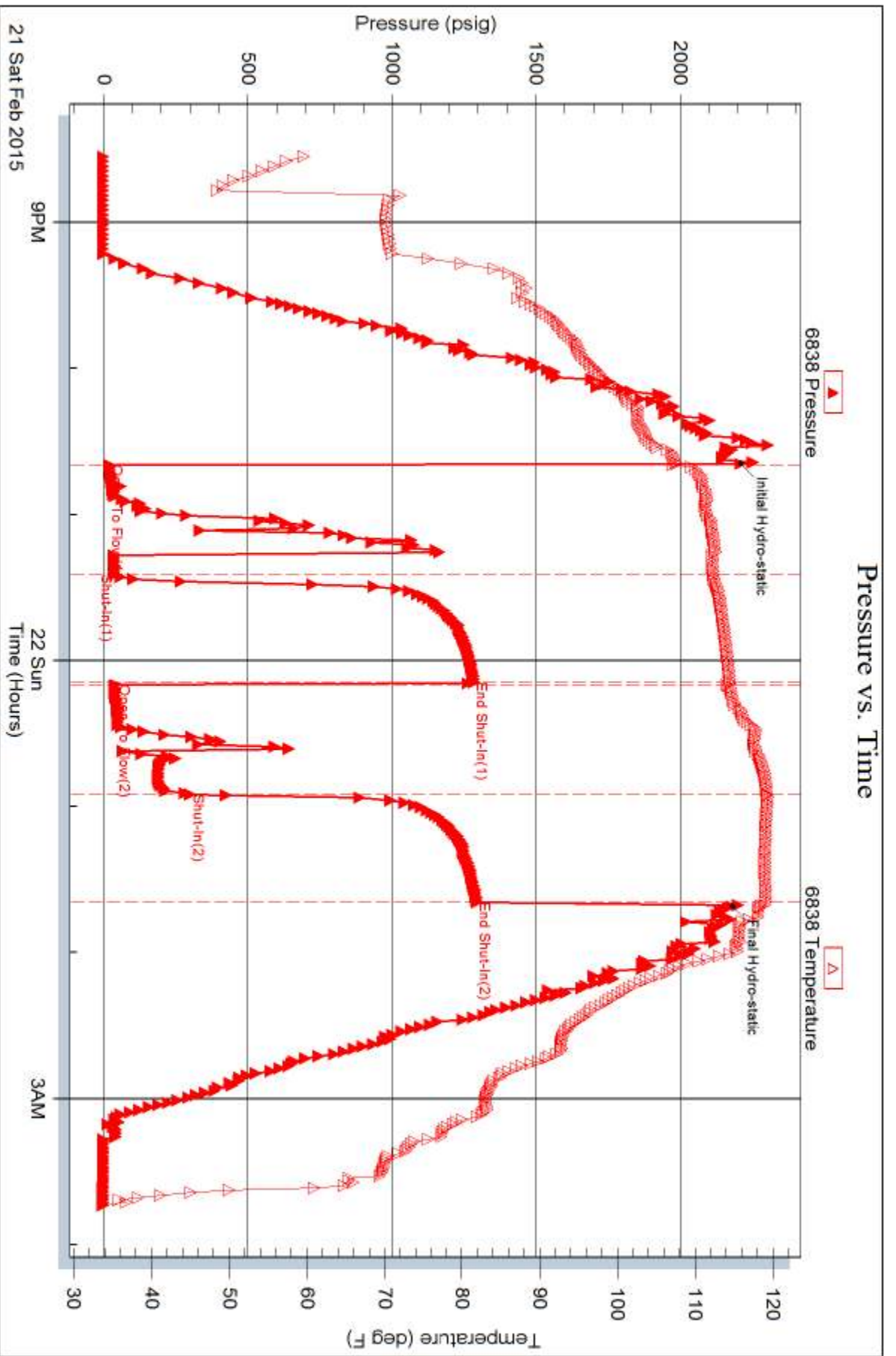
Recovery Information

Recovery Table

Length ft	Description	Volume bbl
45.00	Mud cut Oil/Mud 10% Oil 90%	0.358
60.00	Oily Mud/Oil 20% Mud 80%	0.842

Total Length: 105.00 ft Total Volume: 1.200 bbl
 Num Fluid Samples: 0 Num Gas Bombs: 0 Serial #:
 Laboratory Name: Laboratory Location:
 Recovery Comments:







TRILOBITE TESTING INC.

1515 Commerce Parkway • Hays, Kansas 67601

Test Ticket

NO. 62046

Well Name & No. Felder #3-13 Test No. 1 Date 21 Feb 15
 Company American Warrior Incorporated Elevation 2724 KB 2216 GL
 Address 3118 Cummings Road Garden City Kansas 67846
 Co. Rep / Geo. Jason Alm Rig Discovery Rig #3
 Location: Sec. 13 Twp. 20S Rge. 21W Co. Ness State KS

Interval Tested 4370-4379 Zone Tested Mississippi
 Anchor Length 9 Drill Pipe Run 4345 Mud Wt. 9.25
 Top Packer Depth 4365 Drill Collars Run 30 Vis 51
 Bottom Packer Depth 4370 Wt. Pipe Run 0 WL 8.0
 Total Depth 4379 Chlorides 5200 ppm System LCM 1#

Blow Description Weak blow/ blow built to 5 inches with surging
No blow back
Weak blow with light surging/ Flush tool/ strong surge with flush/ Did not increase blow
Blow died to light surging, surface blow throughout

Rec	Feet of	%gas	%oil	%water	%mud
<u>45</u>	<u>Mud only</u>	<u>90</u>	<u>10</u>	<u>0</u>	<u>0</u>
<u>60</u>	<u>only mud</u>	<u>20</u>	<u>80</u>	<u>0</u>	<u>0</u>
Rec	Feet of	%gas	%oil	%water	%mud
Rec	Feet of	%gas	%oil	%water	%mud
Rec	Feet of	%gas	%oil	%water	%mud

Rec Total 105 BHT 121 Gravity _____ API RW _____ @ _____ °F Chlorides _____ ppm

(A) Initial Hydrostatic 2209 Test 1150 T-On Location 7:35 pm
 (B) First Initial Flow 20 Jars 250 T-Started 8:32 pm
 (C) First Final Flow 40 Safety Joint 75 T-Open 10:40 pm
 (D) Initial Shut-In 1287 Circ Sub _____ T-Pulled 1:40 am
 (E) Second Initial Flow 41 Hourly Standby _____ T-Out 3:45 am
 (F) Second Final Flow 302 Mileage 112 112 Comments _____
 (G) Final Shut-In 1297 Sampler _____
 (H) Final Hydrostatic 2181 Straddle _____ Ruined Shale Packer _____
 Shale Packer _____ Ruined Packer _____
 Extra Packer _____ Extra Copies _____
 Initial Open 45 Extra Recorder _____ Sub Total 0
 Initial Shut-In 45 Day Standby _____ Total 1587
 Final Flow 45 Accessibility _____ MP/DST Disc't _____
 Final Shut-In 45 Sub Total 1587

Approved By Jason T Alm Our Representative [Signature]
 Trilobite Testing Inc. shall not be liable for damaged of any kind of the property or personnel of the one for whom a test is made, or for any loss suffered or sustained, directly or indirectly, through the use of its equipment, or its statements or opinion concerning the results of any test, tools lost or damaged in the hole shall be paid for at cost by the party for whom the test is made.