



DRILL STEM TEST REPORT

Prepared For: **Landmark Resources Inc**

1616 S Voss Rd Ste 600
Houston, TX 77057

ATTN: Terry Mcleod

Gerber #2-9

9-15s-33w Logan,KS

Start Date: 2015.02.16 @ 02:13:44

End Date: 2015.02.16 @ 09:51:14

Job Ticket #: 59699 DST #: 1

Trilobite Testing, Inc
1515 Commerce Parkway Hays, KS 67601
ph: 785-625-4778 fax: 785-625-5620

Printed: 2015.02.19 @ 14:20:36



TRILOBITE TESTING, INC

DRILL STEM TEST REPORT

Landmark Resources Inc

9-15s-33w Logan,KS

1616 S Voss Rd Ste 600
Houston, TX 77057

Gerber #2-9

Job Ticket: 59699

DST#: 1

ATTN: Terry Mcleod

Test Start: 2015.02.16 @ 02:13:44

GENERAL INFORMATION:

Formation: **LKC K**

Deviated: No Whipstock: ft (KB)

Time Tool Opened: 04:53:44

Time Test Ended: 09:51:14

Test Type: Conventional Bottom Hole (Initial)

Tester: Brandon Turley

Unit No: 79

Interval: 4118.00 ft (KB) To 4155.00 ft (KB) (TVD)

Reference Elevations: 2904.00 ft (KB)

Total Depth: 4155.00 ft (KB) (TVD)

2894.00 ft (CF)

Hole Diameter: 7.88 inches Hole Condition: Good

KB to GR/CF: 10.00 ft

Serial #: 8166 Outside

Press@RunDepth: 636.59 psig @ 4123.00 ft (KB)

Capacity: 8000.00 psig

Start Date: 2015.02.16

End Date:

2015.02.16

Last Calib.:

2015.02.16

Start Time: 02:13:49

End Time:

09:51:13

Time On Btm:

2015.02.16 @ 04:53:14

Time Off Btm:

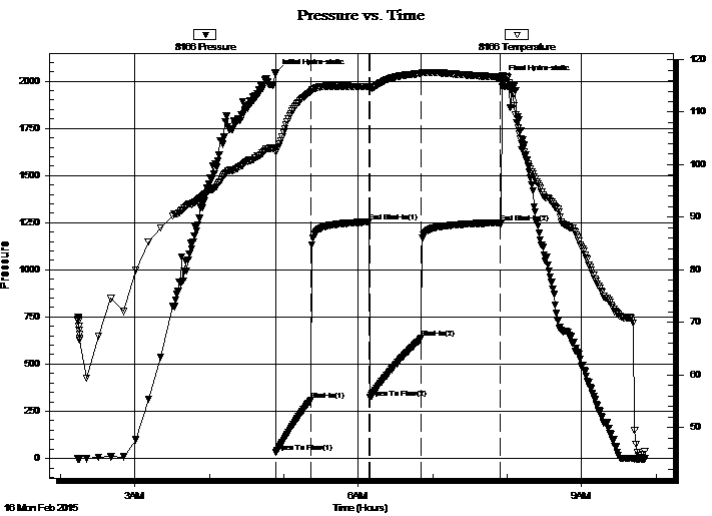
2015.02.16 @ 07:56:14

TEST COMMENT: IF: BOB in 4 1/2 min.

IS: No return.

FF: BOB in 5 min.

FS: No return.



PRESSURE SUMMARY

Time (Min.)	Pressure (psig)	Temp (deg F)	Annotation
0	2043.14	103.24	Initial Hydro-static
1	33.83	102.37	Open To Flow (1)
29	310.25	113.85	Shut-In(1)
76	1254.11	114.83	End Shut-In(1)
76	321.73	114.51	Open To Flow (2)
118	636.59	117.35	Shut-In(2)
181	1250.30	116.64	End Shut-In(2)
183	2008.04	116.83	Final Hydro-static

Recovery

Length (ft)	Description	Volume (bbl)
992.00	mcw 95%w 5%m	13.92
186.00	mcw 70%w 30%m	2.61
196.00	w cm 20%w 80%m	2.75

Gas Rates

	Choke (inches)	Pressure (psig)	Gas Rate (Mcf/d)



**TRILOBITE
TESTING, INC**

DRILL STEM TEST REPORT

TOOL DIAGRAM

Landmark Resources Inc

9-15s-33w Logan,KS

1616 S Voss Rd Ste 600
Houston, TX 77057

Gerber #2-9

Job Ticket: 59699

DST#: 1

ATTN: Terry Mcleod

Test Start: 2015.02.16 @ 02:13:44

Tool Information

Drill Pipe:	Length: 4126.00 ft	Diameter: 3.80 inches	Volume: 57.88 bbl	Tool Weight:	1500.00 lb
Heavy Wt. Pipe:	Length: 0.00 ft	Diameter: 0.00 inches	Volume: 0.00 bbl	Weight set on Packer:	30000.00 lb
Drill Collar:	Length: 0.00 ft	Diameter: 2.25 inches	Volume: 0.00 bbl	Weight to Pull Loose:	90000.00 lb
			<u>Total Volume: 57.88 bbl</u>	Tool Chased	0.00 ft
Drill Pipe Above KB:	26.00 ft			String Weight: Initial	70000.00 lb
Depth to Top Packer:	4118.00 ft			Final	80000.00 lb
Depth to Bottom Packer:	ft				
Interval between Packers:	41.00 ft				
Tool Length:	59.00 ft				
Number of Packers:	2	Diameter: 6.75 inches			

Tool Comments:

Tool Description

Tool Description	Length (ft)	Serial No.	Position	Depth (ft)	Accum. Lengths
Stubb	1.00			4101.00	
Shut In Tool	5.00			4106.00	
Hydraulic tool	5.00			4111.00	
Safety Joint	2.00			4113.00	
Packer	5.00			4118.00	18.00 Bottom Of Top Packer
Packer - Shale	4.00			4122.00	
Stubb	1.00			4123.00	
Recorder	0.00	8373	Inside	4123.00	
Recorder	0.00	8166	Outside	4123.00	
Perforations	1.00			4124.00	
Change Over Sub	1.00			4125.00	
Drill Pipe	31.00			4156.00	
Change Over Sub	1.00			4157.00	
Bullnose	2.00			4159.00	41.00 Anchor Tool

Total Tool Length: 59.00



**TRILOBITE
TESTING, INC**

DRILL STEM TEST REPORT

FLUID SUMMARY

Landmark Resources Inc

9-15s-33w Logan,KS

1616 S Voss Rd Ste 600
Houston, TX 77057

Gerber #2-9

Job Ticket: 59699

DST#: 1

ATTN: Terry Mcleod

Test Start: 2015.02.16 @ 02:13:44

Mud and Cushion Information

Mud Type: Gel Chem

Cushion Type:

Oil API:

0 deg API

Mud Weight: 9.00 lb/gal

Cushion Length:

ft

Water Salinity:

26000 ppm

Viscosity: 45.00 sec/qt

Cushion Volume:

bbbl

Water Loss: 7.19 in³

Gas Cushion Type:

Resistivity: 0.00 ohm.m

Gas Cushion Pressure:

psig

Salinity: 4500.00 ppm

Filter Cake: 1.00 inches

Recovery Information

Recovery Table

Length ft	Description	Volume bbl
992.00	mcw 95%w 5%m	13.915
186.00	mcw 70%w 30%m	2.609
196.00	w cm 20%w 80%m	2.749

Total Length: 1374.00 ft Total Volume: 19.273 bbl

Num Fluid Samples: 0

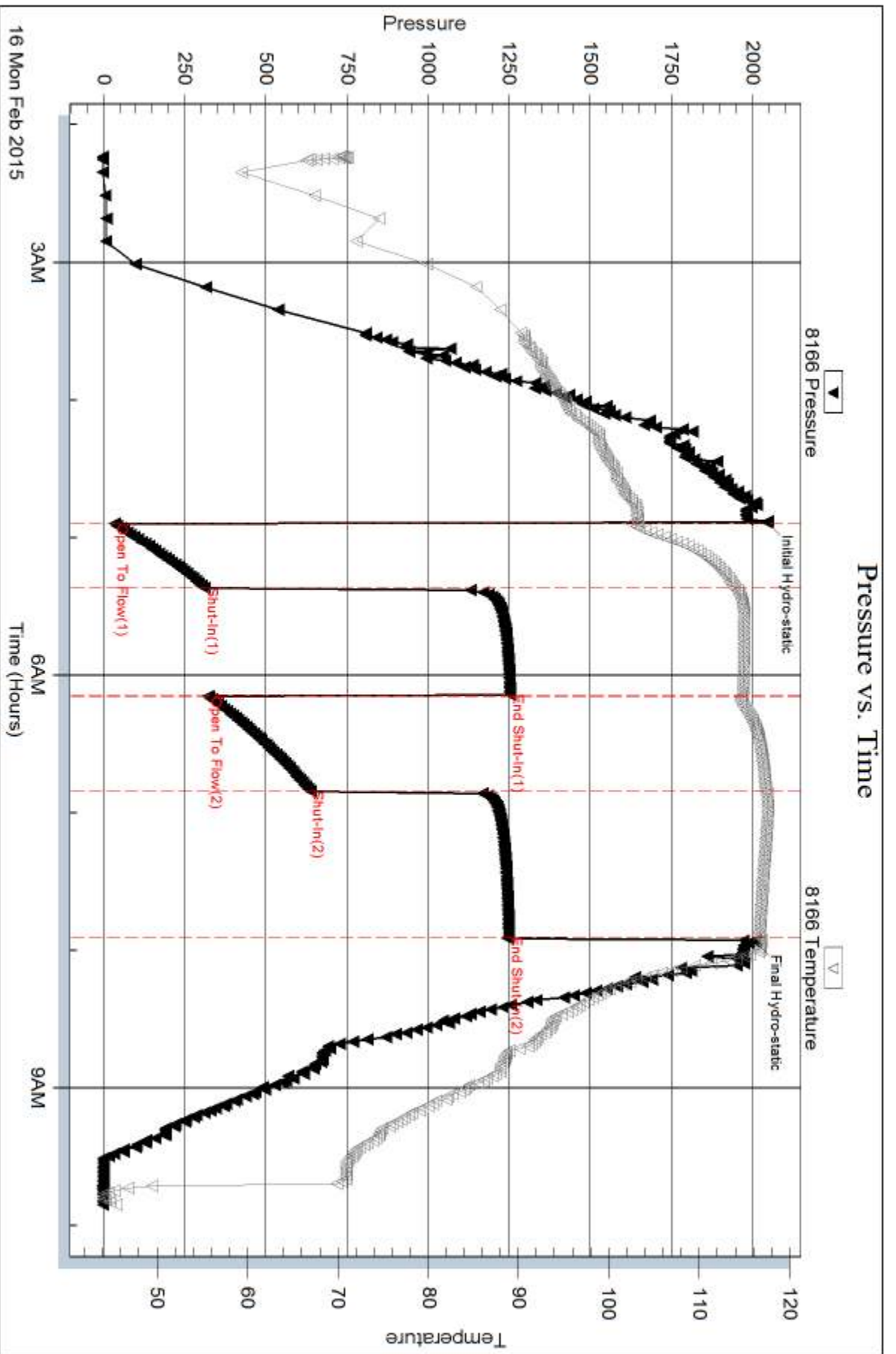
Num Gas Bombs: 0

Serial #:

Laboratory Name:

Laboratory Location:

Recovery Comments: .31@59=26000



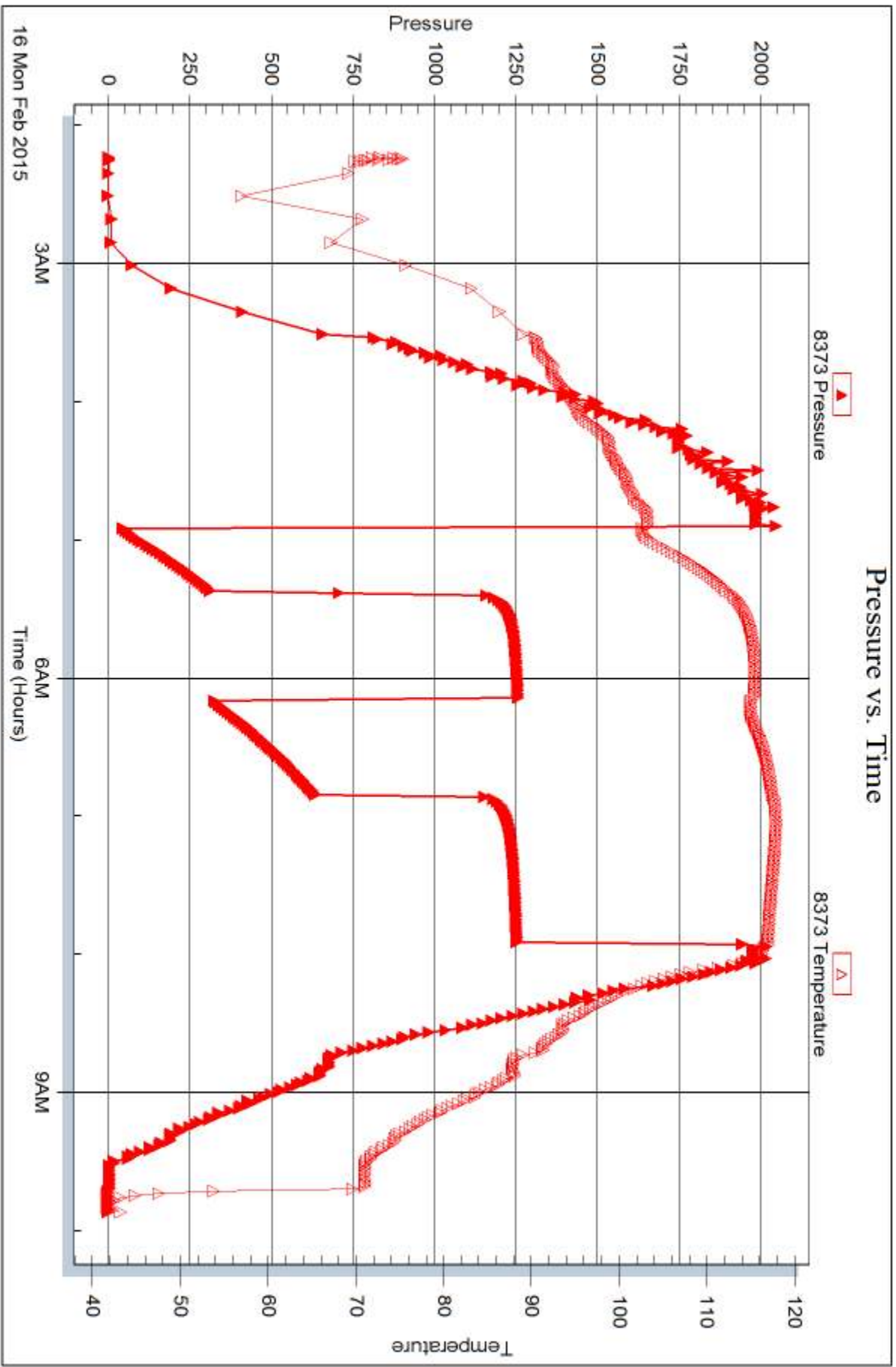
Serial #: 8373

Inside

Landmark Resources Inc

Gerber #2-9

DST Test Number: 1





DRILL STEM TEST REPORT

Prepared For: **Landmark Resources Inc**

1616 S Voss Rd Ste 600
Houston, TX 77057

ATTN: Terry Mcleod

Gerber #2-9

9-15s-33w Logan,KS

Start Date: 2015.02.17 @ 08:52:38

End Date: 2015.02.17 @ 15:17:08

Job Ticket #: 59700 DST #: 2

Trilobite Testing, Inc
1515 Commerce Parkway Hays, KS 67601
ph: 785-625-4778 fax: 785-625-5620

Printed: 2015.02.19 @ 14:19:40



**TRILOBITE
TESTING, INC**

DRILL STEM TEST REPORT

Landmark Resources Inc

9-15s-33w Logan,KS

1616 S Voss Rd Ste 600
Houston, TX 77057

Gerber #2-9

Job Ticket: 59700

DST#: 2

ATTN: Terry Mcleod

Test Start: 2015.02.17 @ 08:52:38

GENERAL INFORMATION:

Formation: **Marmaton - Altamont**

Deviated: No Whipstock: ft (KB)

Time Tool Opened: 11:15:38

Time Test Ended: 15:17:08

Test Type: Conventional Bottom Hole (Reset)

Tester: Brandon Turley

Unit No: 79

Interval: 4247.00 ft (KB) To 4320.00 ft (KB) (TVD)

Reference Elevations: 2904.00 ft (KB)

Total Depth: 4320.00 ft (KB) (TVD)

2894.00 ft (CF)

Hole Diameter: 7.88 inches Hole Condition: Good

KB to GR/CF: 10.00 ft

Serial #: 8166 Outside

Press@RunDepth: 25.46 psig @ 4252.00 ft (KB)

Capacity: 8000.00 psig

Start Date: 2015.02.17 End Date: 2015.02.17

Last Calib.: 2015.02.17

Start Time: 08:52:43 End Time: 15:17:07

Time On Btm: 2015.02.17 @ 11:14:08

Time Off Btm: 2015.02.17 @ 13:17:38

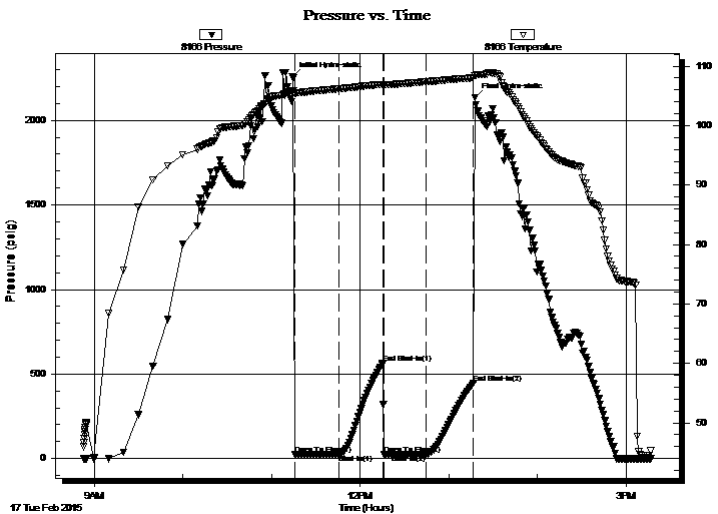
TEST COMMENT: IF: 1/4" blow died in 7 min.

IS: No return.

FF: No blow.

FS: No return.

PRESSURE SUMMARY



Time (Min.)	Pressure (psig)	Temp (deg F)	Annotation
0	2259.95	105.88	Initial Hydro-static
2	23.76	105.43	Open To Flow (1)
32	25.12	106.19	Shut-In(1)
61	562.11	106.94	End Shut-In(1)
62	24.95	106.81	Open To Flow (2)
91	25.46	107.38	Shut-In(2)
123	447.10	108.05	End Shut-In(2)
124	2133.48	108.37	Final Hydro-static

Recovery

Length (ft)	Description	Volume (bbl)
15.00	mud 100%m	0.21

* Recovery from multiple tests

Gas Rates

Choke (inches)	Pressure (psig)	Gas Rate (Mcf/d)



**TRILOBITE
TESTING, INC**

DRILL STEM TEST REPORT

TOOL DIAGRAM

Landmark Resources Inc

9-15s-33w Logan,KS

1616 S Voss Rd Ste 600
Houston, TX 77057

Gerber #2-9

Job Ticket: 59700

DST#: 2

ATTN: Terry Mcleod

Test Start: 2015.02.17 @ 08:52:38

Tool Information

Drill Pipe:	Length: 4253.00 ft	Diameter: 3.80 inches	Volume: 59.66 bbl	Tool Weight: 1500.00 lb
Heavy Wt. Pipe:	Length: 0.00 ft	Diameter: 0.00 inches	Volume: 0.00 bbl	Weight set on Packer: 30000.00 lb
Drill Collar:	Length: 0.00 ft	Diameter: 2.25 inches	Volume: 0.00 bbl	Weight to Pull Loose: 80000.00 lb
			<u>Total Volume: 59.66 bbl</u>	Tool Chased 0.00 ft
Drill Pipe Above KB:	24.00 ft			String Weight: Initial 75000.00 lb
Depth to Top Packer:	4247.00 ft			Final 75000.00 lb
Depth to Bottom Packer:	ft			
Interval between Packers:	77.00 ft			
Tool Length:	95.00 ft			
Number of Packers:	2	Diameter: 6.75 inches		

Tool Comments:

Tool Description	Length (ft)	Serial No.	Position	Depth (ft)	Accum. Lengths
------------------	-------------	------------	----------	------------	----------------

Stubb	1.00			4230.00	
Shut In Tool	5.00			4235.00	
Hydraulic tool	5.00			4240.00	
Safety Joint	2.00			4242.00	
Packer	5.00			4247.00	18.00 Bottom Of Top Packer
Packer - Shale	4.00			4251.00	
Stubb	1.00			4252.00	
Recorder	0.00	8373	Inside	4252.00	
Recorder	0.00	8166	Outside	4252.00	
Perforations	3.00			4255.00	
Change Over Sub	1.00			4256.00	
Drill Pipe	62.00			4318.00	
Change Over Sub	1.00			4319.00	
Bullnose	5.00			4324.00	77.00 Anchor Tool

Total Tool Length: 95.00



**TRILOBITE
TESTING, INC**

DRILL STEM TEST REPORT

FLUID SUMMARY

Landmark Resources Inc

9-15s-33w Logan,KS

1616 S Voss Rd Ste 600
Houston, TX 77057

Gerber #2-9

Job Ticket: 59700

DST#: 2

ATTN: Terry Mcleod

Test Start: 2015.02.17 @ 08:52:38

Mud and Cushion Information

Mud Type: Gel Chem

Cushion Type:

Oil API:

0 deg API

Mud Weight: 9.00 lb/gal

Cushion Length:

ft

Water Salinity:

0 ppm

Viscosity: 50.00 sec/qt

Cushion Volume:

bbbl

Water Loss: 7.98 in³

Gas Cushion Type:

Resistivity: 0.00 ohm.m

Gas Cushion Pressure:

psig

Salinity: 5600.00 ppm

Filter Cake: 1.00 inches

Recovery Information

Recovery Table

Length ft	Description	Volume bbl
15.00	mud 100%m	0.210

Total Length: 15.00 ft Total Volume: 0.210 bbl

Num Fluid Samples: 0

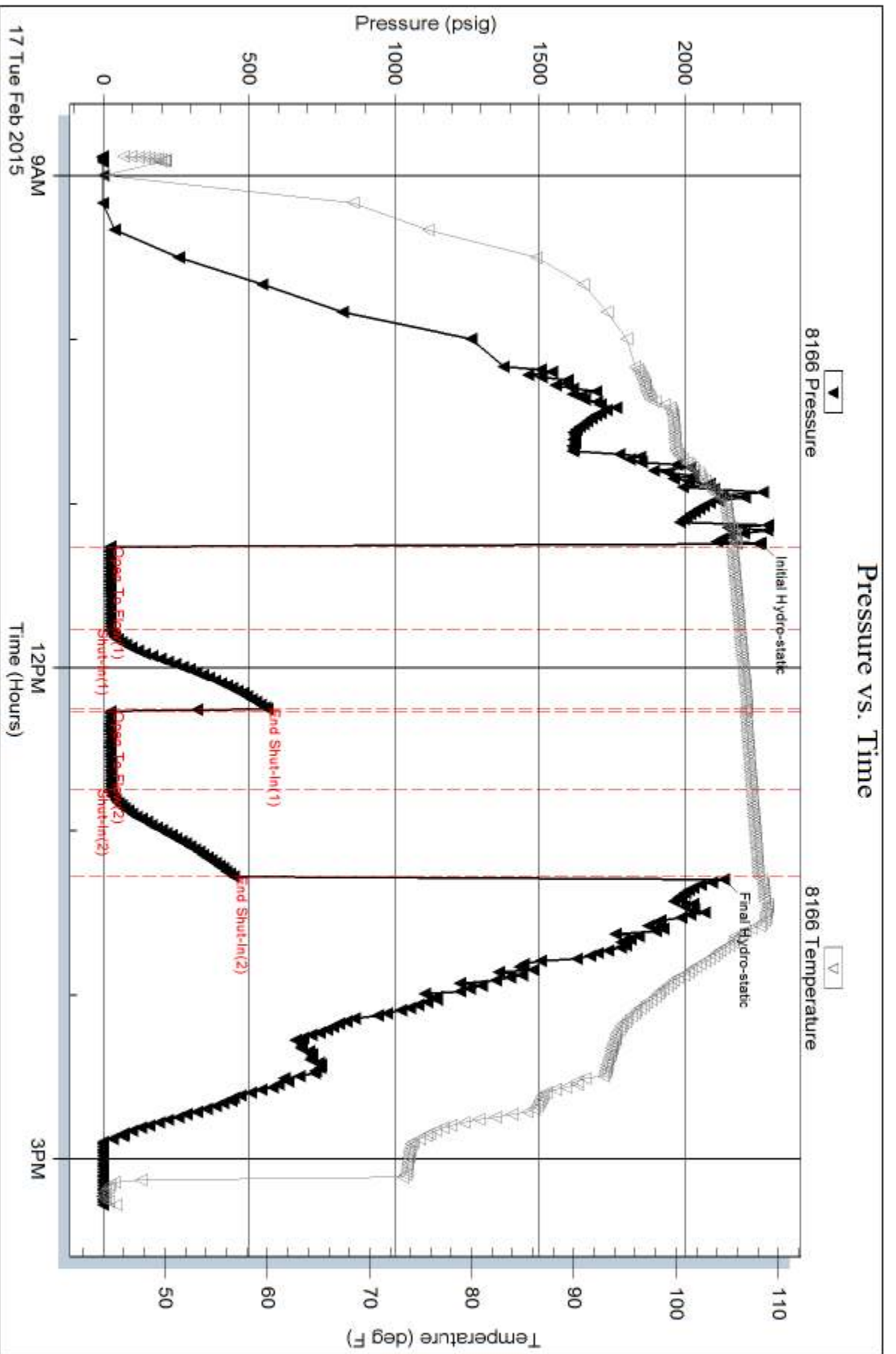
Num Gas Bombs: 0

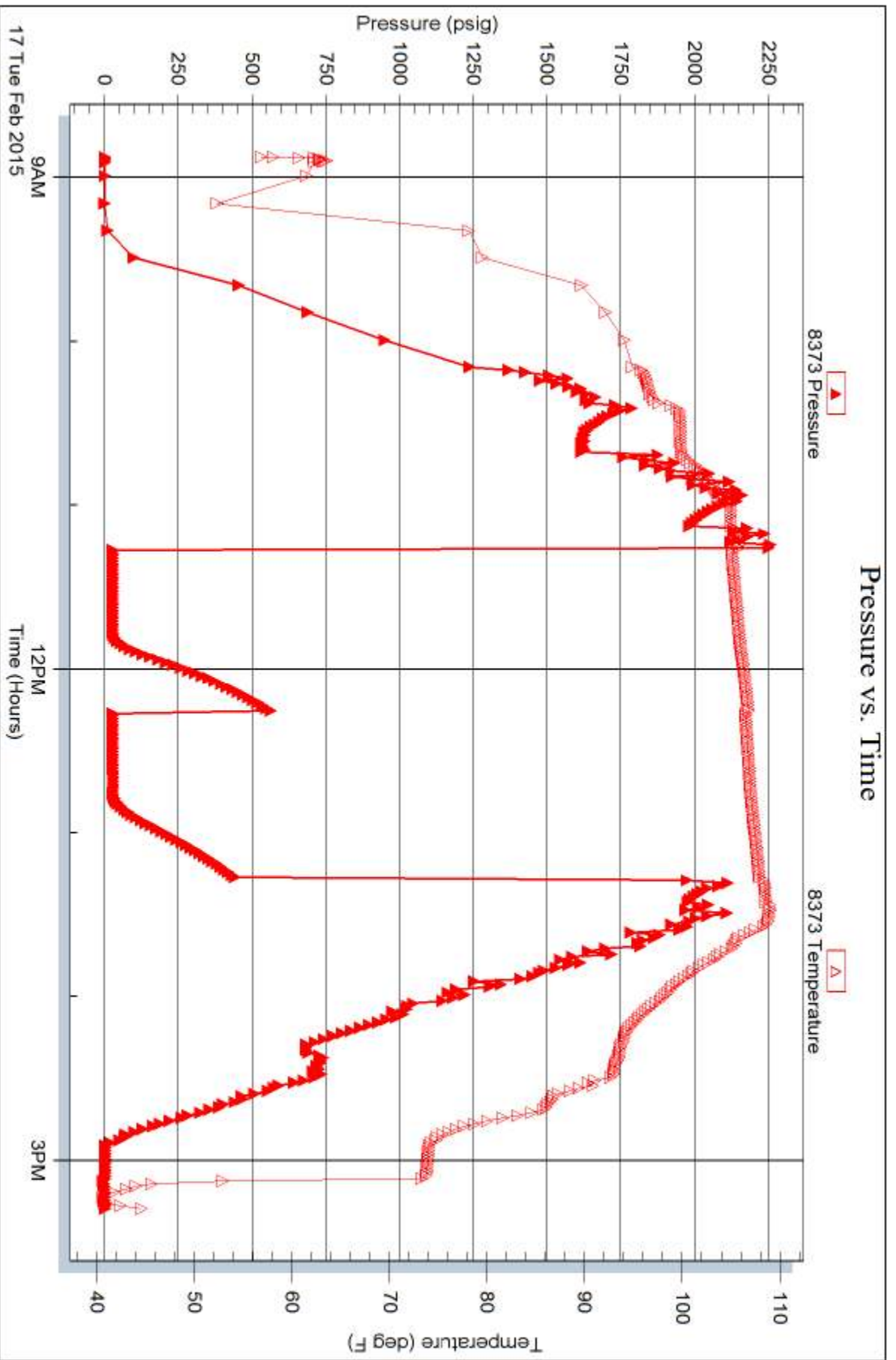
Serial #:

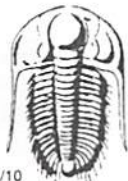
Laboratory Name:

Laboratory Location:

Recovery Comments:







TRILOBITE TESTING INC.

1515 Commerce Parkway • Hays, Kansas 67601

Test Ticket

NO. 59699

Well Name & No. Gerber 2-9 Test No. 1 Date 2-16-15
 Company Landmark Resources Inc Elevation 2904 KB 2894 GL
 Address 1616 S Voss Rd Ste 600 Houston, TX 77057
 Co. Rep / Geo. Terry McLeod Rig U91 #1
 Location: Sec. 9 Twp. 15 Rge. 33 Co. Logan State KS

Interval Tested 4118 4155 Zone Tested ? K
 Anchor Length 37 Drill Pipe Run 4126 Mud Wt. 9.1
 Top Packer Depth 4113 Drill Collars Run — Vis 45
 Bottom Packer Depth 4118 Wt. Pipe Run — WL 7.2
 Total Depth 4155 Chlorides 4500 ppm System LCM 1

Blow Description IF: BoB in 4 1/2 min.
IS: No return,
FF: BoB in 5 min.
FS: No return,

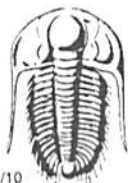
Rec	Feet of	%gas	%oil	%water	%mud
<u>196</u>	<u>wcm</u>		<u>20</u>	<u>80</u>	
<u>186</u>	<u>mcw</u>		<u>70</u>	<u>30</u>	
<u>992</u>	<u>mcw</u>		<u>95</u>	<u>5</u>	
Rec	Feet of	%gas	%oil	%water	%mud
Rec	Feet of	%gas	%oil	%water	%mud

Rec Total 1374 BHT 117 Gravity — API RW .31 @ 59 ° F Chlorides 26,000 ppm

(A) Initial Hydrostatic 2043 Test 1150 T-On Location 1:10
 (B) First Initial Flow 33 Jars _____ T-Started 2:13
 (C) First Final Flow 310 Safety Joint 75 T-Open 4:53
 (D) Initial Shut-In 1254 Circ Sub N/C T-Pulled 7:53
 (E) Second Initial Flow 521 Hourly Standby _____ T-Out 9:50
 (F) Second Final Flow 636 Mileage 64 - 50 Comments on the bank
 (G) Final Shut-In 1250 Sampler _____ at 2:13
 (H) Final Hydrostatic 2008 Straddle _____
 Ruined Shale Packer _____
 Ruined Packer _____
 Extra Copies _____
 Initial Open 30 Shale Packer 250
 Initial Shut-In 45 Extra Packer _____
 Final Flow 45 Extra Recorder _____
 Final Shut-In 60 Day Standby _____
 Accessibility _____
 Sub Total 1525 Sub Total 0
 Total 1525 MP/DST Disc't _____

Approved By Terry McLeod Our Representative [Signature]

TriLOBite Testing Inc. shall not be liable for damaged of any kind of the property or personnel of the one for whom a test is made, or for any loss suffered or sustained, directly or indirectly, through the use of its equipment, or its statements or opinion concerning the results of any test, tools lost or damaged in the hole shall be paid for at cost by the party for whom the test is made.



TRILOBITE TESTING INC.

1515 Commerce Parkway • Hays, Kansas 67601

Test Ticket

NO. 59700

Well Name & No. Gerber 2-9 Test No. 2 Date 2-17-15
 Company Landmark Resources Elevation 2904 KB 2894 GL
 Address _____
 Co. Rep / Geo. Terry McLeod Rig U91 #1
 Location: Sec. 9 Twp. 15 Rge. 33 Co. Logan State KS

Interval Tested 4247 4320 Zone Tested Morrison
 Anchor Length 73 Drill Pipe Run 4253 Mud Wt. 9.3
 Top Packer Depth 4242 Drill Collars Run — Vis 50
 Bottom Packer Depth 4247 Wt. Pipe Run — WL 8.0
 Total Depth 4320 Chlorides 5600 ppm System LCM 1

Blow Description IF: 14 blow died in 7 min.
IS: No return.
FF: No blow.
FS: No return.

Rec	Feet of	%gas	%oil	%water	%mud
<u>15</u>	<u>Mud</u>			<u>160</u>	
Rec	Feet of	%gas	%oil	%water	%mud
Rec	Feet of	%gas	%oil	%water	%mud
Rec	Feet of	%gas	%oil	%water	%mud
Rec	Feet of	%gas	%oil	%water	%mud

Rec Total 15 BHT 107 Gravity — API RW — @ — °F Chlorides — ppm

(A) Initial Hydrostatic 2259 Test 1150 T-On Location 7:40
 (B) First Initial Flow 23 Jars _____ T-Started 8:52
 (C) First Final Flow 25 Safety Joint 75 T-Open 11:15
 (D) Initial Shut-In 562 Circ Sub N/C T-Pulled 13:15
 (E) Second Initial Flow 24 Hourly Standby _____ T-Out 15:17
 (F) Second Final Flow 25 Mileage 64-K2 50+50 Comments _____
 (G) Final Shut-In 447 Sampler _____
 (H) Final Hydrostatic 2133 Straddle _____
 Shale Packer 250 Ruined Shale Packer _____
 Extra Packer _____ Ruined Packer _____
 Extra Recorder _____ Extra Copies _____
 Initial Open 30 Day Standby _____ Sub Total 0
 Initial Shut-In 30 Accessibility _____ Total 1575
 Final Flow 30 Sub Total 1575 MP/DST Disc't _____
 Final Shut-In 30

Approved By Terry McLeod Our Representative [Signature]

Trilobite Testing Inc. shall not be liable for damaged of any kind of the property or personnel of the one for whom a test is made, or for any loss suffered or sustained, directly or indirectly, through the use of its equipment, or its statements or opinion concerning the results of any test, tools lost or damaged in the hole shall be paid for at cost by the party for whom the test is made.