



**TRILOBITE  
TESTING, INC.**

## DRILL STEM TEST REPORT

Mai Oil Operations, Inc.  
8411 Preston Rd STE 800  
Dallas TX 75225-5520  
ATTN: Wyatt Urban

**35-15s-13w Russell,KS**  
**Dolechek #1**  
Job Ticket: 61983      **DST#: 1**  
Test Start: 2015.03.10 @ 00:05:00

### GENERAL INFORMATION:

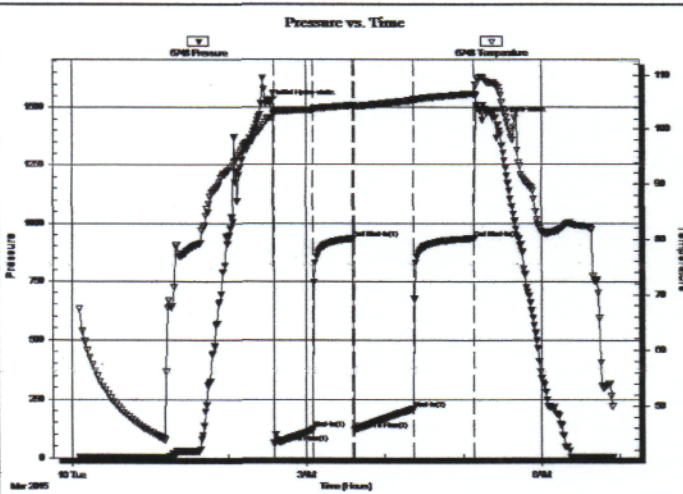
Formation: **LKC "A-C"**  
Deviated: No Whipstock: ft (KB)  
Time Tool Opened: 02:35:00  
Time Test Ended: 06:54:30  
Test Type: Conventional Bottom Hole (Initial)  
Tester: Shane Konzern  
Unit No: 56  
Interval: **3055.00 ft (KB) To 3100.00 ft (KB) (TVD)**  
Total Depth: 3100.00 ft (KB) (TVD)  
Reference Elevations: 1886.00 ft (KB)  
1878.00 ft (CF)  
Hole Diameter: 7.88 inches Hole Condition: Poor  
KB to GR/CF: 8.00 ft

### Serial #: 6748

Inside

Press@RunDepth: 209.42 psig @ 3096.00 ft (KB)      Capacity: 8000.00 psig  
Start Date: 2015.03.10      End Date: 2015.03.10      Last Calib.: 2015.03.10  
Start Time: 00:06:00      End Time: 06:54:30      Time On Btrm: 2015.03.10 @ 02:32:30  
Time Off Btrm: 2015.03.10 @ 05:14:30

TEST COMMENT: IFF 30 Minutes. BOB in 14 minutes and 30 seconds.  
ISI 30 Minutes No blow back.  
FFP 45 Minutes. BOB in 19 minutes and 15 seconds.  
FSI 45 minutes. No blow back.



### PRESSURE SUMMARY

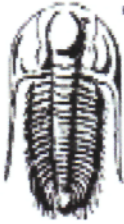
Time (Min.)	Pressure (psig)	Temp (deg F)	Annotation
0	1517.48	102.30	Initial Hydro-static
3	62.62	103.07	Open To Flow (1)
33	122.56	103.69	Shut-In(1)
63	933.15	104.51	End Shut-In(1)
64	119.52	104.16	Open To Flow (2)
110	209.42	105.38	Shut-In(2)
156	933.09	106.60	End Shut-In(2)
162	1444.35	109.65	Final Hydro-static

### Recovery

Length (ft)	Description	Volume (bbl)
0.00	126 feet gas in pipe	0.00
5.00	100% Clean Oil	0.07
126.00	GOCMW 5% gas, 15% oil, 30% mud, 50% water	1.77
63.00	GOCMW 5% gas, 10% oil, 25% mud, 60% water	0.88
63.00	OCMW 10% oil, 10% mud, 80% water	0.88
63.00	OCMW 20% oil, 30% mud, 50% water	0.88

### Gas Rates

	Choke (inches)	Pressure (psig)	Gas Rate (Mcf/d)



**TRILOBITE  
TESTING, INC.**

# DRILL STEM TEST REPORT

Mai Oil Operations, Inc.  
8411 Preston Rd STE 800  
Dallas TX 75225-5520  
ATTN: Wyatt Urban

**35-15s-13w Russell,KS**  
**Dolechek #1**  
Job Ticket: 61984 **DST#: 2**  
Test Start: 2015.03.10 @ 14:10:00

## GENERAL INFORMATION:

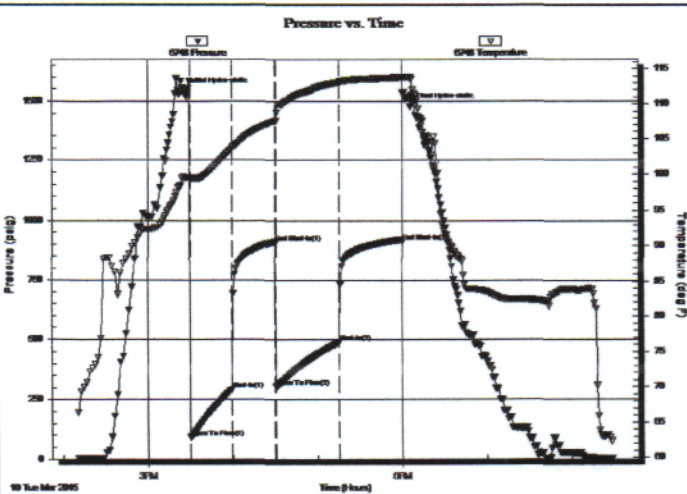
Formation: **LKC "E-G"**  
Deviated: No Whipstock: ft (KB)  
Time Tool Opened: 15:30:30  
Time Test Ended: 20:29:00  
Interval: **3098.00 ft (KB) To 3135.00 ft (KB) (TVD)**  
Total Depth: 3135.00 ft (KB) (TVD)  
Hole Diameter: 7.88 inches Hole Condition: Poor  
Test Type: Conventional Bottom Hole (Initial)  
Tester: Shane Konzern  
Unit No: 56/44/Great Bend  
Reference Elevations: 1886.00 ft (KB)  
1878.00 ft (CF)  
KB to GR/CF: 8.00 ft

## Serial #: 6748

Inside

Press@RunDepth: 489.06 psig @ 3131.00 ft (KB)  
Start Date: 2015.03.10 End Date: 2015.03.10  
Start Time: 14:11:00 End Time: 20:29:00  
Capacity: 8000.00 psig  
Last Calib.: 2015.03.10  
Time On Btm: 2015.03.10 @ 15:25:30  
Time Off Btm: 2015.03.10 @ 18:06:00

TEST COMMENT: FFP 30 Minutes. BOB in 2 minutes and 50 seconds.  
ISI 30 Minutes No blow back.  
FFP 45 Minutes. BOB in 5 minutes and 30 seconds.  
FSI 45 Minutes. Weak surface blow back.



## PRESSURE SUMMARY

Time (Min.)	Pressure (psig)	Temp (deg F)	Annotation
0	1539.63	99.59	Initial Hydro-static
5	91.50	99.36	Open To Flow (1)
34	291.65	103.60	Shut-In(1)
65	909.20	107.66	End Shut-In(1)
66	304.65	107.60	Open To Flow (2)
110	489.06	113.08	Shut-In(2)
155	910.84	113.77	End Shut-In(2)
161	1476.38	113.79	Final Hydro-static

## Recovery

Length (ft)	Description	Volume (bbl)
0.00	75 feet gas in pipe	0.00
252.00	Water 100% w	3.53
126.00	VGMCOW 5% mud, 10% oil, 40% gas, 45.77 at	
315.00	VGMCOW 5% m, 10% o, 35% w, 50% g 4.42	
63.00	VGMCOW 2.5% m, 12.5% o, 25% w, 60% g 0.88	
252.00	100% water	3.53

## Gas Rates

	Choke (inches)	Pressure (psig)	Gas Rate (Mcf/d)

# QUALITY OILWELL CEMENTING, INC.

Federal Tax I.D.# 20-2886107

Phone 785-483-2025  
Cell 785-324-1041

Home Office P.O. Box 32 Russell, KS 67665

No. 1095

Date	3-6-2015	Sec.	35	Twp.	15s	Range	13w	County	Barton	State	Kansas	On Location		Finish	8:45 PM.
Location								Russell S. to Michaelis Rd. 6E 1/4 S 1/4 W							

Lease	Dolechek	Well No.	1	Owner	To Quality Oilwell Cementing, Inc. You are hereby requested to rent cementing equipment and furnish cementer and helper to assist owner or contractor to do work as listed.
Contractor	SOUTHWIND DRILL. Rig #3	Type Job	Long Surface	Charge To	MAI OPERATIONS INC.
Hole Size	12.74	T.D.	491'	Street	
Csg.	8 5/8 New 23#	Depth	491'	City	State
Tbg. Size		Depth		The above was done to satisfaction and supervision of owner agent or contractor.	
Tool		Depth		Cement Amount Ordered	250sx 740
Cement Left in Csg.	20'	Shoe Joint			3% CC 2% Gel
Meas Line		Displace	30 / BBL		

**EQUIPMENT**

Pumptrk #18	No.	Cementer	GLENN G.	Common
		Helper	CODY B.	Poz. Mix
Bulktrk #1	No.	Driver	RYAN M.	Gel.
		Driver		Calcium
Bulktrk	No.	Driver		
		Driver		

**JOB SERVICES & REMARKS**

Remarks:	Hulls
Rat Hole	Salt
Mouse Hole	Flowseal
Centralizers	Kol-Seal
Baskets	Mud CLR 48
D/V or Port Collar	CFL-117 or CD110 CAF 38
	Sand
	Handling
	Mileage

Box II New joints of 23# 8 5/8 csg.  
Set @ 491' Received circulation  
Cement with 250 sx 740 3% CC  
2% gel. Release TRP. &  
Displace @ TOTAL OF 30/BBL  
H<sub>2</sub>O - Shut in @ 350'

**FLOAT EQUIPMENT**

Guide Shoe
Centralizer
Baskets
AFU Inserts
Float Shoe
Latch Down

SOLID RUBBER WIPER PLUG  
Cement did circulate to surface.

THANKS!

X Signature	Jay Brien	Tax	
		Discount	
		Total Charge	

# QUALITY OILWELL CEMENTING, INC.

Federal Tax I.D.# 20-2886107

Phone 785-483-2025  
Cell 785-324-1041

Home Office P.O. Box 32 Russell, KS 67665

No. 1139

Date	3-12-15	Sec.	35	Twp.	15	Range	13	County	Russell	State	Ks	On Location		Finish	8:45 AM
								Location 281 Michealis Rd - 6E 1/4 S, W15							

Lease	Dolechek		Well No.	#1	Owner										
Contractor	Southwind		#1		To Quality Oilwell Cementing, Inc. You are hereby requested to rent cementing equipment and furnish cementer and helper to assist owner or contractor to do work as listed.										
Type Job	Longstring				Charge To	Main oil operations									
Hole Size	7 7/8"		T.D.	3377'	Street										
Csg.	5 1/2" used 14#		Depth	3331'	City										
Tbg. Size			Depth		State										
Tool			Depth		The above was done to satisfaction and supervision of owner agent or contractor.										
Cement Left in Csg.	19.74'		Shoe Joint	19.74'	Cement Amount Ordered	160 60/40 10% Salt + 2% Gel 1/4#									
Meas Line			Displace	80 3/4 BLS	Flt-seal	1000 gal mud Clear 48									

**EQUIPMENT**

Pumptrk	16	No.	Cementer	Billy	Common										
			Helper		Poz. Mix										
Bulktrk	3	No.	Driver	Ryan	Gel.										
			Driver		Calcium										
Bulktrk	P.U.	No.	Driver	Rick	Hulls										
			Driver		Salt										

**JOB SERVICES & REMARKS**

Remarks:															
Rat Hole	Flowseal														
Mouse Hole	Kol-Seal														
Centralizers	1-10 Mud CLR 48														
Baskets	Bottom of shoe joint CFL-117 or CD110 CAF 38														
D/V or Port Collar	pipe on bottom break Sand														
Circulation	pump 1000 gal mud Clear Handling														
	48, Plug Pathole w/ 20' Hook Mileage														
	to casing + mix 130s Cement.														

**FLOAT EQUIPMENT**

	Shut down wash pump + lines Guide Shoe														
	Released plug + Displaced w/ 80 3/4 BLS Centralizer 10														
	of water. Released + held. Baskets 1														
	AFU Inserts														
	Lift pressure 600 # Float Shoe 1														
	Lard plug to 1600 # Latch Down 1														
	Pumptrk Charge														
	Mileage														

													Tax		
													Discount		
													Total Charge		

X Signature *[Signature]*

