



**TRILOBITE
TESTING, INC.**

DRILL STEM TEST REPORT

Sam Gary Jr. & Assc.

12-4S-36W

1515 Wynkoop, Ste 700
Denver Co, 80202

Fisher Cattle #2-12

Job Ticket: 61087

DST#: 3

ATTN: Chris Micheal

Test Start: 2015.01.27 @ 18:02:00

GENERAL INFORMATION:

Formation: **Upper Pawnee**

Deviated: No Whipstock: ft (KB)

Time Tool Opened: 20:14:15

Time Test Ended: 02:12:45

Test Type: Conventional Bottom Hole (Initial)

Tester: Royal Fisher

Unit No: #54

Interval: 4537.00 ft (KB) To 4582.00 ft (KB) (TVD)

Reference Elevations: 3291.00 ft (KB)

Total Depth: 4582.00 ft (KB) (TVD)

3288.00 ft (CF)

Hole Diameter: 7.88 inches Hole Condition: Good

KB to GR/CF: 3.00 ft

Serial #: 6753 Outside

Press@RunDepth: 31.85 psig @ 4538.00 ft (KB)

Capacity: 8000.00 psig

Start Date: 2015.01.27

End Date:

2015.01.28

Last Calib.:

2015.01.28

Start Time: 18:02:05

End Time:

02:12:44

Time On Btm:

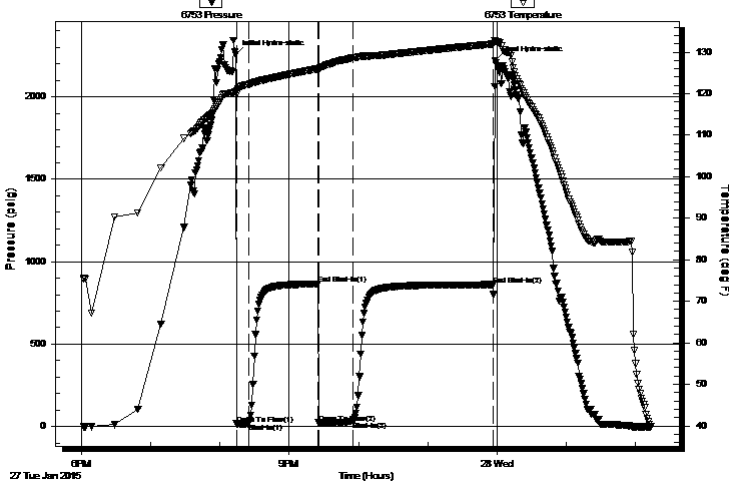
2015.01.27 @ 20:13:45

Time Off Btm:

2015.01.27 @ 23:58:15

TEST COMMENT: 10 - IF - Surface blow built up to 1"
60 - ISI - No Return
30 - FF - Surface blow built up to 1 3/4"
120 - FSI - No Return

Pressure vs. Time



PRESSURE SUMMARY

Time (Min.)	Pressure (psig)	Temp (deg F)	Annotation
0	2258.61	120.53	Initial Hydro-static
1	16.62	119.89	Open To Flow (1)
11	19.20	122.22	Shut-In(1)
71	865.32	125.96	End Shut-In(1)
72	22.07	125.56	Open To Flow (2)
102	31.85	128.59	Shut-In(2)
223	860.98	131.94	End Shut-In(2)
225	2218.96	132.81	Final Hydro-static

Recovery

Length (ft)	Description	Volume (bbl)
20.00	OCM - 50M - 50o	0.10

Gas Rates

	Choke (inches)	Pressure (psig)	Gas Rate (Mcf/d)



**TRILOBITE
TESTING, INC**

DRILL STEM TEST REPORT

FLUID SUMMARY

Sam Gary Jr. & Assc.

12-4S-36W

1515 Wynkoop, Ste 700
Denver Co, 80202

Fisher Cattle #2-12

Job Ticket: 61087

DST#: 3

ATTN: Chris Micheal

Test Start: 2015.01.27 @ 18:02:00

Mud and Cushion Information

Mud Type: Gel Chem

Cushion Type:

Oil API:

deg API

Mud Weight: 9.00 lb/gal

Cushion Length:

ft

Water Salinity:

ppm

Viscosity: 59.00 sec/qt

Cushion Volume:

bbbl

Water Loss: 6.40 in³

Gas Cushion Type:

Resistivity: 0.00 ohm.m

Gas Cushion Pressure:

psig

Salinity: 2200.00 ppm

Filter Cake: 1.00 inches

Recovery Information

Recovery Table

Length ft	Description	Volume bbl
20.00	OCM - 50M - 50o	0.098

Total Length: 20.00 ft Total Volume: 0.098 bbl

Num Fluid Samples: 0

Num Gas Bombs: 0

Serial #:

Laboratory Name:

Laboratory Location:

Recovery Comments:

