



## DRILL STEM TEST REPORT

Prepared For: **Koron Investments Inc.**

P.O. Box 981  
Hays, KS 67601

ATTN: Mark Downing

**Baughner A #4-29**

**23-12s-21w-Trego,KS**

Start Date: 2014.12.15 @ 14:00:00

End Date: 2014.12.15 @ 20:54:00

Job Ticket #: 60421                      DST #: 1

Trilobite Testing, Inc  
1515 Commerce Parkway Hays, KS 67601  
ph: 785-625-4778 fax: 785-625-5620

Printed: 2014.12.19 @ 10:35:37

Koron Investments Inc. 23-12s-21w-Trego,KS Baughner A #4-29 DST # 1 LKC "H-K" 2014.12.15



**TRILOBITE TESTING, INC**

# DRILL STEM TEST REPORT

Koron Investments Inc.

23-12s-21w-Trego, KS

P.O. Box 981  
Hays, KS 67601

**Baughner A #4-29**

Job Ticket: 60421      DST#: 1

ATTN: Mark Downing

Test Start: 2014.12.15 @ 14:00:00

## GENERAL INFORMATION:

Formation: **LKC "H-K"**  
 Deviated: No Whipstock:      ft (KB)  
 Time Tool Opened: 17:02:30  
 Time Test Ended: 20:54:00

Test Type: Conventional Bottom Hole (Initial)  
 Tester: Shane Konzem  
 Unit No: 56

Interval: **3730.00 ft (KB) To 3821.00 ft (KB) (TVD)**  
 Total Depth: 3821.00 ft (KB) (TVD)  
 Hole Diameter: 7.88 inches Hole Condition: Fair

Reference Elevations: 2313.00 ft (KB)  
 2307.00 ft (CF)  
 KB to GR/CF: 6.00 ft

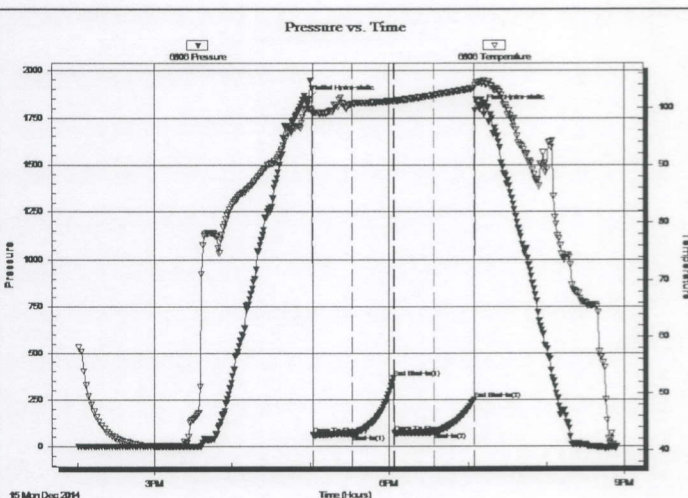
## Serial #: 6806

Inside

Press@RunDepth: 76.52 psig @ 3817.08 ft (KB)  
 Start Date: 2014.12.15      End Date: 2014.12.15  
 Start Time: 14:01:00      End Time: 20:54:00

Capacity: 8000.00 psig  
 Last Calib.: 2014.12.15  
 Time On Btm: 2014.12.15 @ 16:59:30  
 Time Off Btm: 2014.12.15 @ 19:09:30

TEST COMMENT: IFP 30 Minutes. Weak blow built to 1 1/2" into bucket of deisel.  
 ISI 30 Minutes. No blow back.  
 FFP 30 Minutes. Weak blow built to 2"  
 FSI 30 Minutes. No blow back.



## PRESSURE SUMMARY

Time (Min.)	Pressure (psig)	Temp (deg F)	Annotation
0	1848.93	99.90	Initial Hydro-static
3	61.27	98.97	Open To Flow (1)
33	67.84	100.70	Shut-In(1)
64	366.69	101.26	End Shut-In(1)
65	70.71	101.24	Open To Flow (2)
95	76.52	102.21	Shut-In(2)
125	251.52	103.39	End Shut-In(2)
130	1798.66	104.44	Final Hydro-static

## Recovery

Length (ft)	Description	Volume (bbl)
40.00	SOWCM 2.5% oil, 2.5% water, 95% mud	0.20

## Gas Rates

Choke (inches)	Pressure (psig)	Gas Rate (Mcf/d)





**TRILOBITE TESTING, INC.**

## DRILL STEM TEST REPORT

Koron Investments Inc.

23-12s-21w-Trego, KS

P.O. Box 981  
Hays, KS 67601

**Baughner A #4-29**

Job Ticket: 60421

DST#: 1

ATTN: Mark Downing

Test Start: 2014.12.15 @ 14:00:00

### GENERAL INFORMATION:

Formation: **LKC "H-K"**

Deviated: No Whipstock: ft (KB)

Time Tool Opened: 17:02:30

Time Test Ended: 20:54:00

Test Type: Conventional Bottom Hole (Initial)

Tester: Shane Konzem

Unit No: 56

Interval: **3730.00 ft (KB) To 3821.00 ft (KB) (TVD)**

Total Depth: 3821.00 ft (KB) (TVD)

Hole Diameter: 7.88 inches Hole Condition: Fair

Reference Elevations: 2313.00 ft (KB)

2307.00 ft (CF)

KB to GR/CF: 6.00 ft

**Serial #: 8159** Outside

Press@RunDepth: 257.49 psig @ 3818.08 ft (KB)

Start Date: 2014.12.15 End Date: 2014.12.15

Start Time: 14:01:00 End Time: 20:55:00

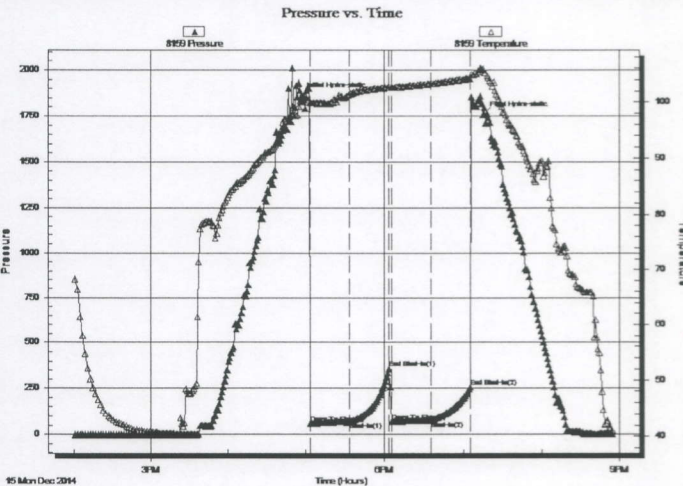
Capacity: 8000.00 psig

Last Calib.: 2014.12.15

Time On Btm: 2014.12.15 @ 16:56:30

Time Off Btm: 2014.12.15 @ 19:15:30

TEST COMMENT: IFP 30 Minutes. Weak blow built to 1 1/2" into bucket of deisel.  
ISI 30 Minutes. No blow back.  
FFP 30 Minutes. Weak blow built to 2"  
FSI 30 Minutes. No blow back.



### PRESSURE SUMMARY

Time (Min.)	Pressure (psig)	Temp (deg F)	Annotation
0	1857.02	100.62	Initial Hydro-static
7	57.08	99.91	Open To Flow (1)
37	67.19	101.38	Shut-In(1)
67	358.73	102.65	End Shut-In(1)
69	68.35	102.60	Open To Flow (2)
99	76.25	103.27	Shut-In(2)
129	257.49	104.20	End Shut-In(2)
139	1757.11	105.75	Final Hydro-static

### Recovery

Length (ft)	Description	Volume (bbl)
40.00	SOWCM 2.5% oil, 2.5% water, 95% mud	0.20

### Gas Rates

Choke (inches)	Pressure (psig)	Gas Rate (Mcf/d)



**TRILOBITE  
TESTING, INC**

## DRILL STEM TEST REPORT

TOOL DIAGRAM

Koron Investments Inc.

23-12s-21w-Trego, KS

P.O. Box 981  
Hays, KS 67601

Baughter A #4-29

Job Ticket: 60421

DST#: 1

ATTN: Mark Downing

Test Start: 2014.12.15 @ 14:00:00

### Tool Information

Drill Pipe:	Length: 3411.00 ft	Diameter: 3.80 inches	Volume: 47.85 bbl	Tool Weight: 2000.00 lb
Heavy Wt. Pipe:	Length: 310.11 ft	Diameter: 2.25 inches	Volume: 1.53 bbl	Weight set on Packer: 20000.00 lb
Drill Collar:	Length: 0.00 ft	Diameter: 2.25 inches	Volume: 0.00 bbl	Weight to Pull Loose: 62000.00 lb
			<u>Total Volume: 49.38 bbl</u>	Tool Chased 0.00 ft
Drill Pipe Above KB:	11.11 ft			String Weight: Initial 57000.00 lb
Depth to Top Packer:	3730.00 ft			Final 57000.00 lb
Depth to Bottom Packer:	ft			
Interval between Packers:	91.08 ft			
Tool Length:	111.08 ft			
Number of Packers:	2	Diameter: 6.75 inches		

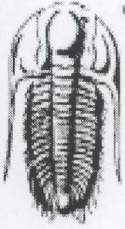
Tool Comments:

### Tool Description

Tool Description	Length (ft)	Serial No.	Position	Depth (ft)	Accum. Lengths
Shut-In Tool	5.00			3715.00	
Hydraulic tool	5.00			3720.00	
Packer	5.00			3725.00	20.00 Bottom Of Top Packer
Packer	5.00			3730.00	
Anchor	5.00			3735.00	
Change Over Sub	0.75			3735.75	
Drill Pipe	62.58			3798.33	
Change Over Sub	0.75			3799.08	
Anchor	17.00			3816.08	
Recorder	1.00	6806	Inside	3817.08	
Recorder	1.00	8159	Outside	3818.08	
Bull Plug	3.00			3821.08	91.08 Bottom Packers & Anchor

**Total Tool Length: 111.08**





**TRILOBITE  
TESTING, INC**

## DRILL STEM TEST REPORT

**FLUID SUMMARY**

Koron Investments Inc.

23-12s-21w-Trego,KS

P.O. Box 981  
Hays, KS 67601

**Baughner A #4-29**

Job Ticket: 60421

DST#: 1

ATTN: Mark Downing

Test Start: 2014.12.15 @ 14:00:00

### Mud and Cushion Information

Mud Type: Gel Chem  
Mud Weight: 9.00 lb/gal  
Viscosity: 59.00 sec/qt  
Water Loss: 8.38 in<sup>3</sup>  
Resistivity: ohm.m  
Salinity: 3500.00 ppm  
Filter Cake: 0.00 inches

Cushion Type:  
Cushion Length: ft  
Cushion Volume: bbl  
Gas Cushion Type:  
Gas Cushion Pressure: psig

Oil API: deg API  
Water Salinity: ppm

### Recovery Information

Recovery Table

Length ft	Description	Volume bbl
40.00	SOWCM 2.5% oil, 2.5% water, 95% mud	0.197

Total Length: 40.00 ft      Total Volume: 0.197 bbl

Num Fluid Samples: 0

Num Gas Bombs: 0

Serial #:

Laboratory Name:

Laboratory Location:

Recovery Comments:

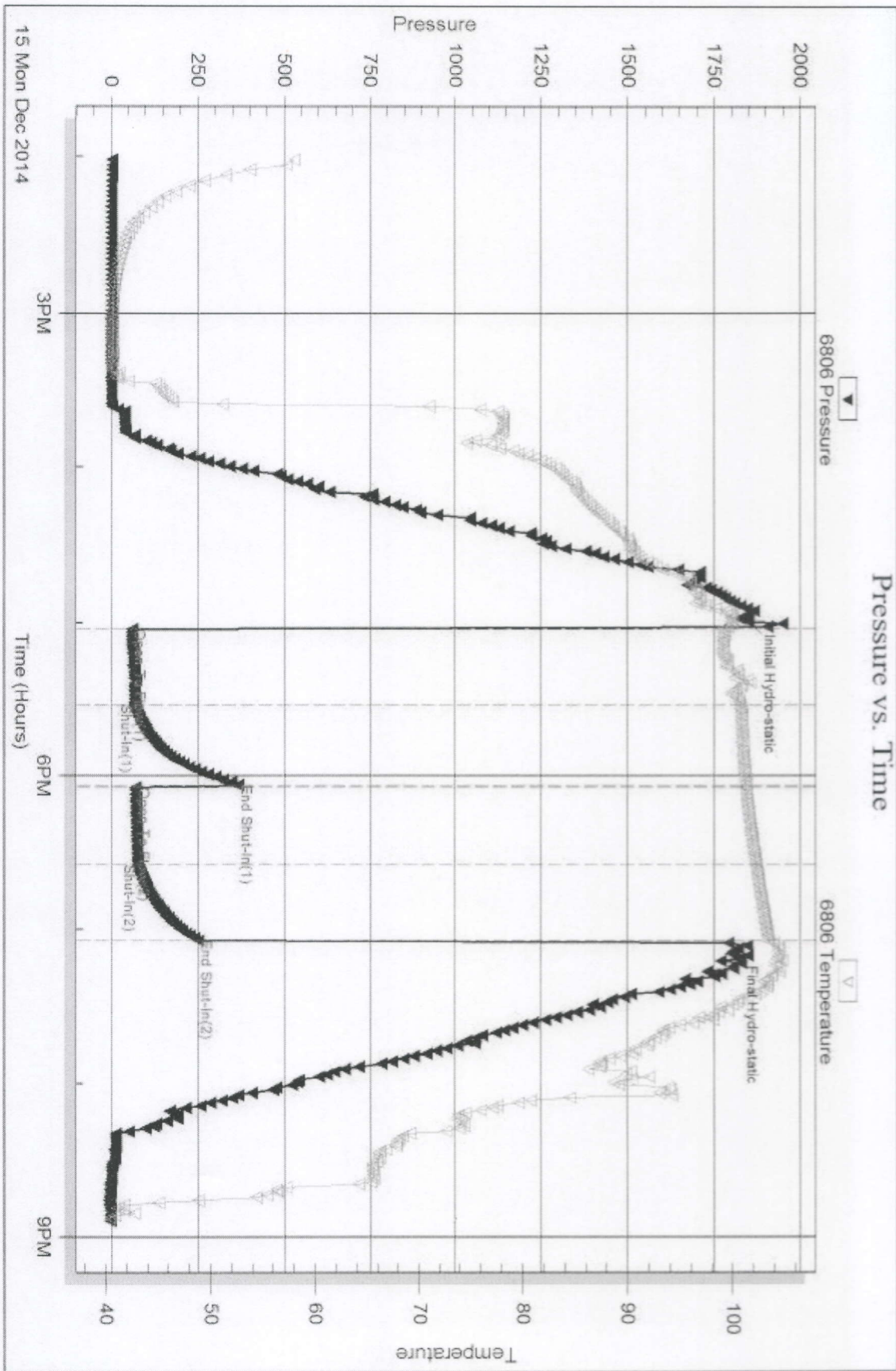
Serial #: 6806

Inside

Koron Investments Inc.

Baugher A #4-29

DST Test Number: 1



Tribble Testing, Inc

Ref. No: 60421

Printed: 2014.12.19 @ 10:35:38

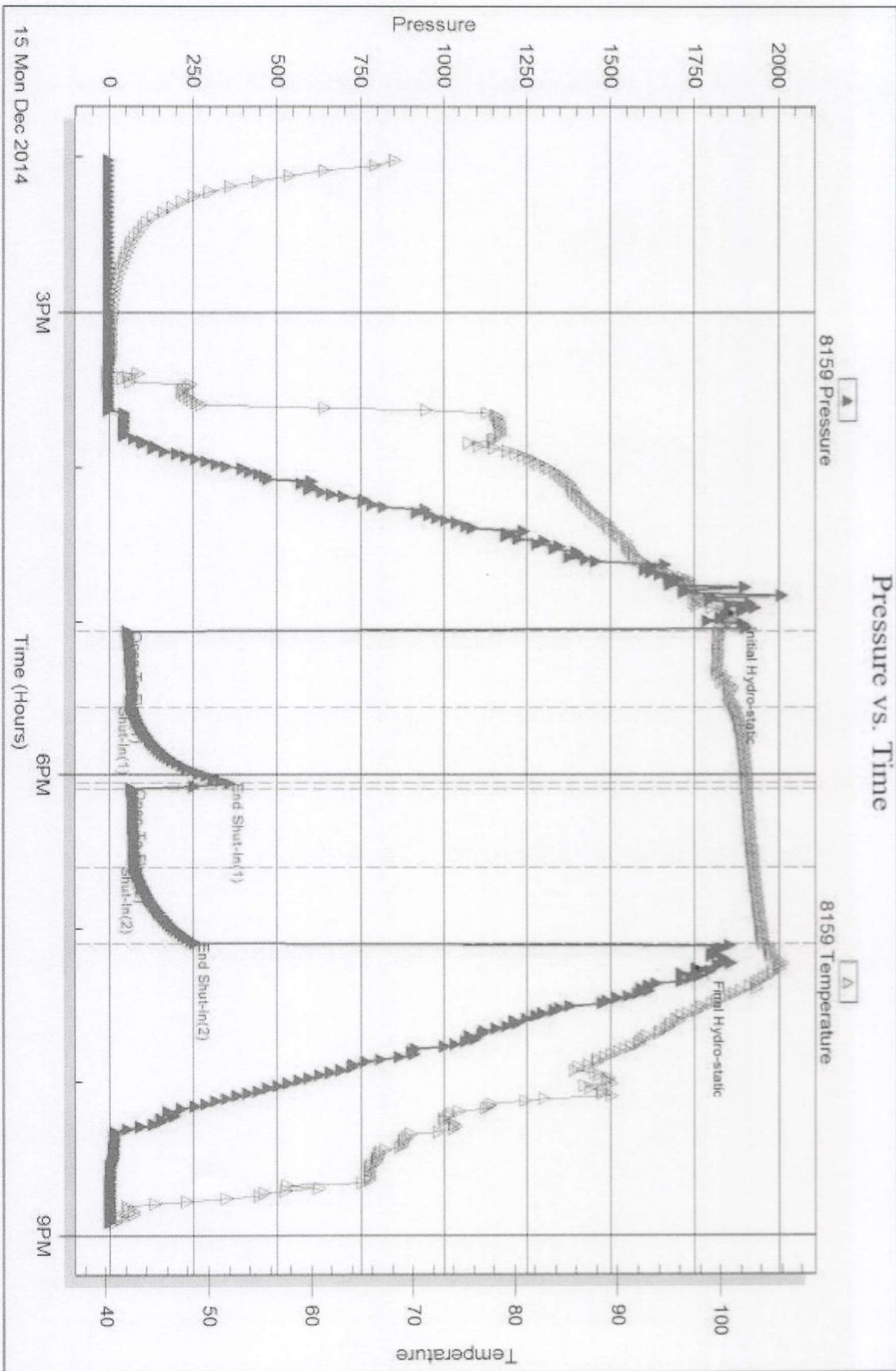


Serial #: 8159

Outside Koron Investments Inc.

Baugher A #4-29

DST Test Number: 1



Tribble Testing, Inc

Ref. No: 60421

Printed: 2014 12 19 @ 10:35:38