



DRILL STEM TEST REPORT

Prepared For: **Landmark Resources Inc.**

1616 S. Voss Rd. Suite 600
Houston, TX 77057

ATTN: Terry McLeod

Wesseler #1-28

28-16s-34w Scott,KS

Start Date: 2015.04.24 @ 20:20:00

End Date: 2015.04.25 @ 04:11:20

Job Ticket #: 61677 DST #: 1

Trilobite Testing, Inc
1515 Commerce Parkway Hays, KS 67601
ph: 785-625-4778 fax: 785-625-5620

Printed: 2015.04.29 @ 10:18:46

Landmark Resources Inc. 28-16s-34w Scott,KS Wesseler #1-28 DST # 1 LKC "1" 2015.04.24



**TRILOBITE
TESTING, INC**

DRILL STEM TEST REPORT

Landmark Resources Inc.

28-16s-34w Scott,KS

1616 S. Voss Rd.Suite 600
Houston, TX 77057

Wesseler #1-28

Job Ticket: 61677

DST#: 1

ATTN: Terry McLeod

Test Start: 2015.04.24 @ 20:20:00

GENERAL INFORMATION:

Formation: **LKC "I"**

Deviated: No Whipstock: ft (KB)

Time Tool Opened: 22:42:40

Time Test Ended: 04:11:20

Test Type: Conventional Bottom Hole (Initial)

Tester: Chuck Smith

Unit No: 61

Interval: 4264.00 ft (KB) To 4290.00 ft (KB) (TVD)

Reference Elevations: 3146.00 ft (KB)

Total Depth: 4290.00 ft (KB) (TVD)

3135.00 ft (CF)

Hole Diameter: 7.88 inches Hole Condition: Good

KB to GR/CF: 11.00 ft

Serial #: 8357

Inside

Press@RunDepth: 145.93 psig @ 4267.00 ft (KB)

Capacity: 8000.00 psig

Start Date: 2015.04.24

End Date:

2015.04.25

Last Calib.:

2015.04.25

Start Time: 20:20:02

End Time:

04:11:19

Time On Btm:

2015.04.24 @ 22:41:00

Time Off Btm:

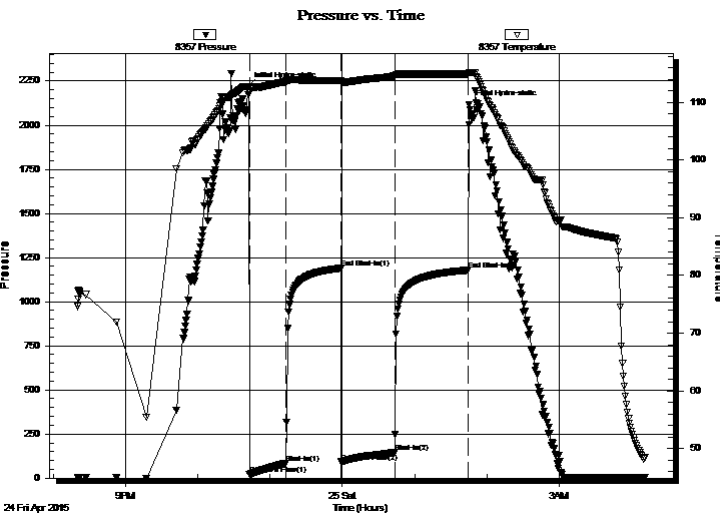
2015.04.25 @ 01:45:20

TEST COMMENT: 30- 6 1/2" Blow .

45- No return.

45- 8" Blow .

60- Surface return died @ 15 min.



PRESSURE SUMMARY

Time (Min.)	Pressure (psig)	Temp (deg F)	Annotation
0	2220.53	112.74	Initial Hydro-static
2	19.84	111.76	Open To Flow (1)
32	85.63	113.55	Shut-In(1)
78	1189.46	113.76	End Shut-In(1)
78	92.31	113.51	Open To Flow (2)
123	145.93	114.57	Shut-In(2)
184	1178.94	114.90	End Shut-In(2)
185	2116.62	115.16	Final Hydro-static

Recovery

Length (ft)	Description	Volume (bbl)
0.00	API: 24 @ 50 Degrees F = 25.	0.00
60.00	GOCM 10g 30o 60m	0.30
60.00	GMCO 10g 5m 85o	0.30
200.00	GO 5g 95o	1.44
0.00	45' Weak GIP	0.00

Gas Rates

	Choke (inches)	Pressure (psig)	Gas Rate (Mcf/d)



**TRILOBITE
TESTING, INC**

DRILL STEM TEST REPORT

Landmark Resources Inc.

28-16s-34w Scott,KS

1616 S. Voss Rd. Suite 600
Houston, TX 77057

Wesseler #1-28

Job Ticket: 61677

DST#: 1

ATTN: Terry McLeod

Test Start: 2015.04.24 @ 20:20:00

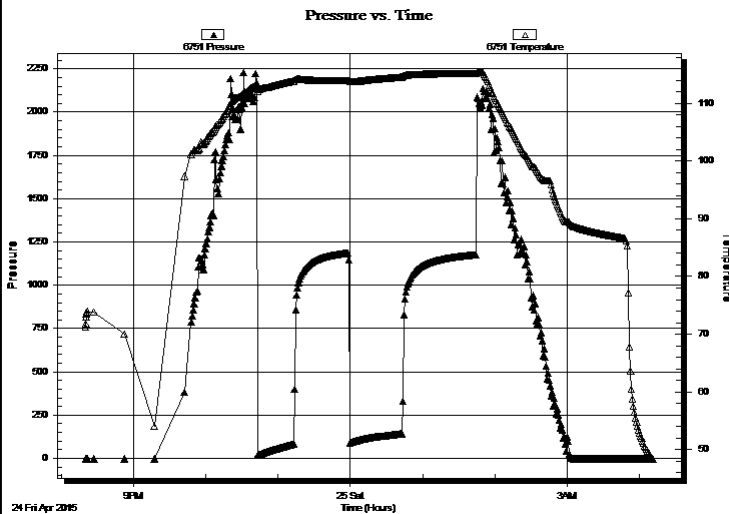
GENERAL INFORMATION:

Formation: **LKC "I"**
 Deviated: No Whipstock: ft (KB)
 Time Tool Opened: 22:42:40
 Time Test Ended: 04:11:20
 Interval: **4264.00 ft (KB) To 4290.00 ft (KB) (TVD)**
 Total Depth: 4290.00 ft (KB) (TVD)
 Hole Diameter: 7.88 inches Hole Condition: Good
 Test Type: Conventional Bottom Hole (Initial)
 Tester: Chuck Smith
 Unit No: 61
 Reference Elevations: 3146.00 ft (KB)
 3135.00 ft (CF)
 KB to GR/CF: 11.00 ft

Serial #: 6751 Outside

Press@RunDepth: psig @ 4267.00 ft (KB)
 Start Date: 2015.04.24 End Date: 2015.04.25
 Start Time: 20:20:02 End Time: 04:11:10
 Capacity: 8000.00 psig
 Last Calib.: 2015.04.25
 Time On Btm:
 Time Off Btm:

TEST COMMENT: 30- 6 1/2" Blow .
 45- No return.
 45- 8" Blow .
 60- Surface return died @ 15 min.



PRESSURE SUMMARY

Time (Min.)	Pressure (psig)	Temp (deg F)	Annotation

Recovery

Length (ft)	Description	Volume (bbl)
0.00	API: 24 @ 50 Degrees F = 25.	0.00
60.00	GOCM 10g 30o 60m	0.30
60.00	GMCO 10g 5m 85o	0.30
200.00	GO 5g 95o	1.44
0.00	45' Weak GIP	0.00

Gas Rates

	Choke (inches)	Pressure (psig)	Gas Rate (Mcf/d)



**TRILOBITE
TESTING, INC**

DRILL STEM TEST REPORT

TOOL DIAGRAM

Landmark Resources Inc.

28-16s-34w Scott,KS

1616 S. Voss Rd.Suite 600
Houston, TX 77057

Wesseler #1-28

Job Ticket: 61677

DST#: 1

ATTN: Terry McLeod

Test Start: 2015.04.24 @ 20:20:00

Tool Information

Drill Pipe:	Length: 3993.00 ft	Diameter: 3.80 inches	Volume: 56.01 bbl	Tool Weight:	2100.00 lb
Heavy Wt. Pipe:	Length: 0.00 ft	Diameter: inches	Volume: 0.00 bbl	Weight set on Packer:	25000.00 lb
Drill Collar:	Length: 270.00 ft	Diameter: 2.25 inches	Volume: 1.33 bbl	Weight to Pull Loose:	75000.00 lb
			<u>Total Volume: 57.34 bbl</u>	Tool Chased	0.00 ft
Drill Pipe Above KB:	21.50 ft			String Weight: Initial	70000.00 lb
Depth to Top Packer:	4264.00 ft			Final	71000.00 lb
Depth to Bottom Packer:	ft				
Interval between Packers:	26.00 ft				
Tool Length:	48.50 ft				
Number of Packers:	2	Diameter: 6.75 inches			

Tool Comments:

Tool Description

Tool Description	Length (ft)	Serial No.	Position	Depth (ft)	Accum. Lengths
Change Over Sub	1.00			4242.50	
Shut In Tool	5.00			4247.50	
Hydraulic tool	5.00			4252.50	
Safety Joint	2.50			4255.00	
Packer	5.00			4260.00	22.50 Bottom Of Top Packer
Packer	4.00			4264.00	
Stubb	1.00			4265.00	
Perforations	2.00			4267.00	
Recorder	0.00	8357	Inside	4267.00	
Recorder	0.00	6751	Outside	4267.00	
Perforations	20.00			4287.00	
Bullnose	3.00			4290.00	26.00 Bottom Packers & Anchor

Total Tool Length: 48.50



**TRILOBITE
TESTING, INC**

DRILL STEM TEST REPORT

FLUID SUMMARY

Landmark Resources Inc.

28-16s-34w Scott,KS

1616 S. Voss Rd. Suite 600
Houston, TX 77057

Wesseler #1-28

Job Ticket: 61677

DST#: 1

ATTN: Terry McLeod

Test Start: 2015.04.24 @ 20:20:00

Mud and Cushion Information

Mud Type: Gel Chem
Mud Weight: 9.00 lb/gal
Viscosity: 50.00 sec/qt
Water Loss: 7.97 in³
Resistivity: ohm.m
Salinity: 5200.00 ppm
Filter Cake: 1.00 inches

Cushion Type:
Cushion Length: ft
Cushion Volume: bbl
Gas Cushion Type:
Gas Cushion Pressure: psig

Oil API: 25 deg API
Water Salinity: ppm

Recovery Information

Recovery Table

Length ft	Description	Volume bbl
0.00	API: 24 @ 50 Degrees F = 25.	0.000
60.00	GOCM 10g 30o 60m	0.295
60.00	GMCO 10g 5m 85o	0.295
200.00	GO 5g 95o	1.439
0.00	45' Weak GIP	0.000

Total Length: 320.00 ft Total Volume: 2.029 bbl

Num Fluid Samples: 0

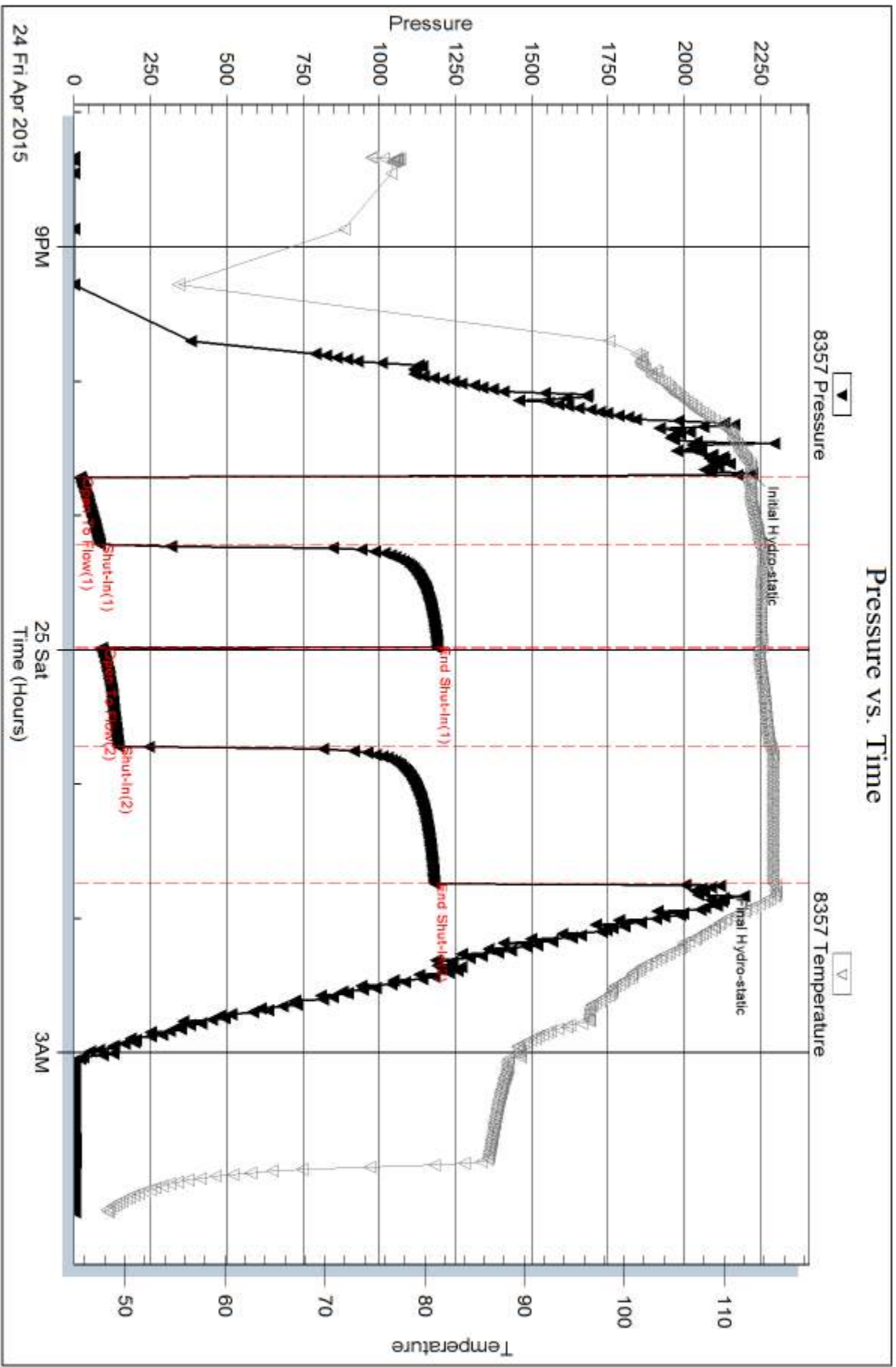
Num Gas Bombs: 0

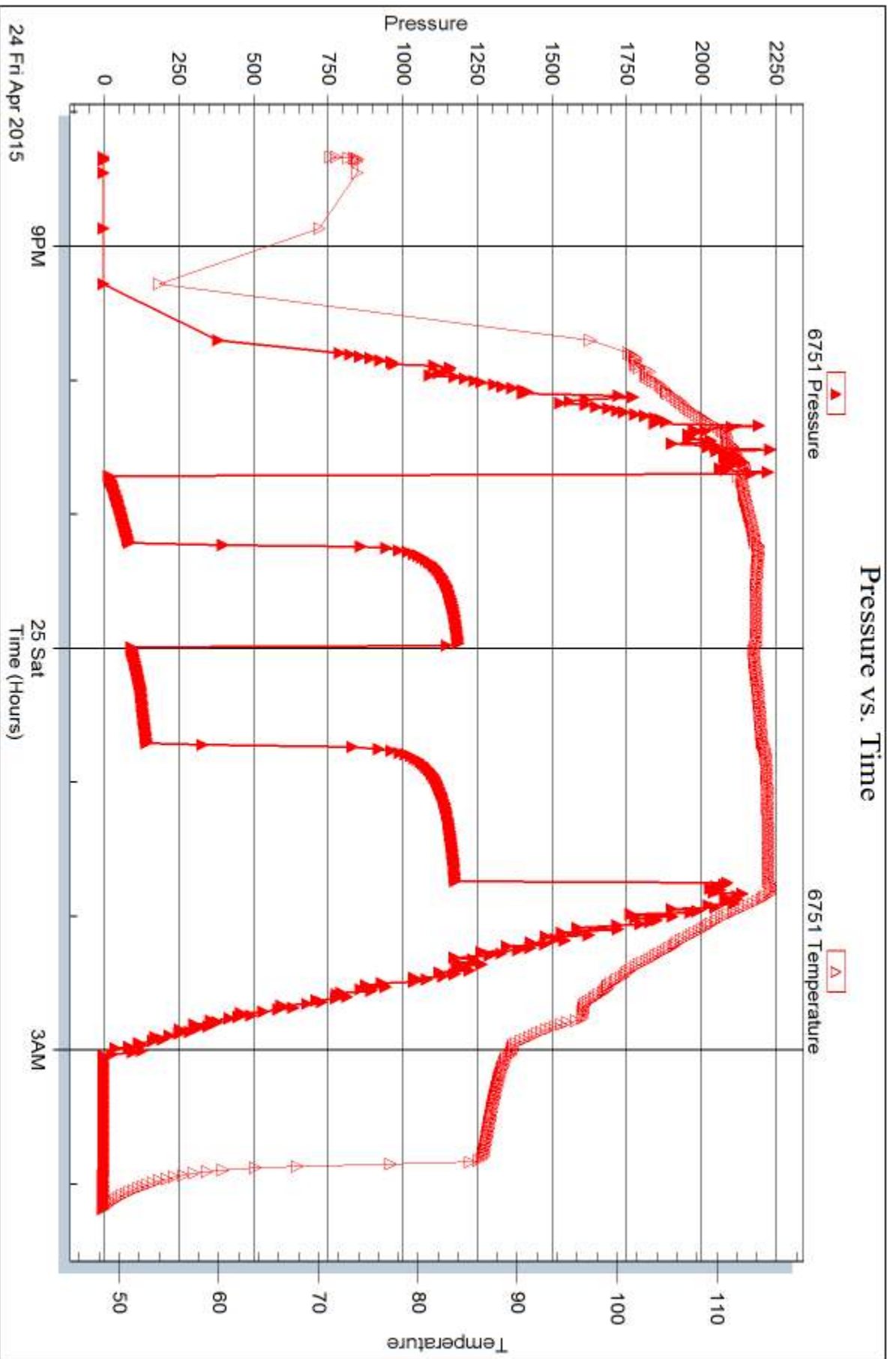
Serial #:

Laboratory Name:

Laboratory Location:

Recovery Comments:







DRILL STEM TEST REPORT

Prepared For: **Landmark Resources Inc.**

1616 S. Voss Rd. Suite 600
Houston, TX 77057

ATTN: Terry McLeod

Wesseler #1-28

28-16s-34w Scott,KS

Start Date: 2015.04.25 @ 11:45:00

End Date: 2015.04.25 @ 18:02:20

Job Ticket #: 61678 DST #: 2

Trilobite Testing, Inc
1515 Commerce Parkway Hays, KS 67601
ph: 785-625-4778 fax: 785-625-5620

Printed: 2015.04.29 @ 10:18:16



TRILOBITE TESTING, INC

DRILL STEM TEST REPORT

Landmark Resources Inc.

28-16s-34w Scott,KS

1616 S. Voss Rd.Suite 600
Houston, TX 77057

Wesseler #1-28

Job Ticket: 61678

DST#: 2

ATTN: Terry McLeod

Test Start: 2015.04.25 @ 11:45:00

GENERAL INFORMATION:

Formation: **LKC 'J'**

Deviated: No Whipstock: ft (KB)

Time Tool Opened: 13:17:00

Time Test Ended: 18:02:20

Test Type: Conventional Bottom Hole (Reset)

Tester: Chuck Smith

Unit No: 61

Interval: 4297.00 ft (KB) To 4325.00 ft (KB) (TVD)

Reference Elevations: 3146.00 ft (KB)

Total Depth: 4325.00 ft (KB) (TVD)

3135.00 ft (CF)

Hole Diameter: 7.88 inches Hole Condition: Good

KB to GR/CF: 11.00 ft

Serial #: 8357

Inside

Press@RunDepth: 423.85 psig @ 4302.00 ft (KB)

Capacity: 8000.00 psig

Start Date: 2015.04.25

End Date:

2015.04.25

Last Calib.:

2015.04.25

Start Time: 11:45:02

End Time:

18:02:19

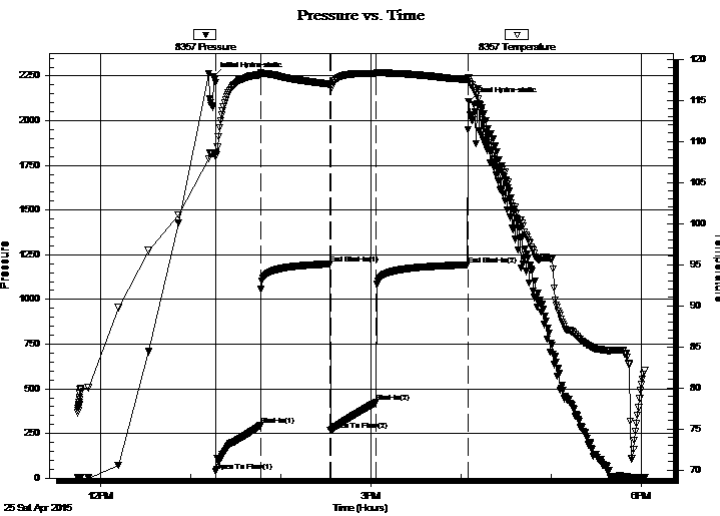
Time On Btm:

2015.04.25 @ 13:15:20

Time Off Btm:

2015.04.25 @ 16:05:00

TEST COMMENT: 30- B.O.B. @ 10 min.
45- No return.
30- B.O.B. @ 12 min.
60- No return.



PRESSURE SUMMARY

Time (Min.)	Pressure (psig)	Temp (deg F)	Annotation
0	2247.38	108.52	Initial Hydro-static
2	39.37	108.07	Open To Flow (1)
32	294.60	118.09	Shut-In(1)
78	1199.02	116.93	End Shut-In(1)
78	268.73	116.62	Open To Flow (2)
109	423.85	118.21	Shut-In(2)
169	1193.87	117.50	End Shut-In(2)
170	2105.97	117.68	Final Hydro-static

Recovery

Length (ft)	Description	Volume (bbl)
760.00	MW 5m 95w	8.20
140.00	OSMW 30m 70w	1.96

* Recovery from multiple tests

Gas Rates

	Choke (inches)	Pressure (psig)	Gas Rate (Mcf/d)



**TRILOBITE
TESTING, INC**

DRILL STEM TEST REPORT

TOOL DIAGRAM

Landmark Resources Inc.

28-16s-34w Scott,KS

1616 S. Voss Rd.Suite 600
Houston, TX 77057

Wesseler #1-28

Job Ticket: 61678

DST#: 2

ATTN: Terry McLeod

Test Start: 2015.04.25 @ 11:45:00

Tool Information

Drill Pipe:	Length: 4025.00 ft	Diameter: 3.80 inches	Volume: 56.46 bbl	Tool Weight: 2100.00 lb
Heavy Wt. Pipe:	Length: 0.00 ft	Diameter: inches	Volume: 0.00 bbl	Weight set on Packer: 25000.00 lb
Drill Collar:	Length: 270.00 ft	Diameter: 2.25 inches	Volume: 1.33 bbl	Weight to Pull Loose: 80000.00 lb
			<u>Total Volume: 57.79 bbl</u>	Tool Chased 0.00 ft
Drill Pipe Above KB:	20.50 ft			String Weight: Initial 74000.00 lb
Depth to Top Packer:	4297.00 ft			Final 76000.00 lb
Depth to Bottom Packer:	ft			
Interval between Packers:	28.00 ft			
Tool Length:	50.50 ft			
Number of Packers:	2	Diameter: 6.75 inches		

Tool Comments:

Tool Description	Length (ft)	Serial No.	Position	Depth (ft)	Accum. Lengths
------------------	-------------	------------	----------	------------	----------------

Change Over Sub	1.00			4275.50	
Shut In Tool	5.00			4280.50	
Hydraulic tool	5.00			4285.50	
Safety Joint	2.50			4288.00	
Packer	5.00			4293.00	22.50 Bottom Of Top Packer
Packer	4.00			4297.00	
Stubb	1.00			4298.00	
Perforations	4.00			4302.00	
Recorder	0.00	8357	Inside	4302.00	
Recorder	0.00	6751	Outside	4302.00	
Perforations	20.00			4322.00	
Bullnose	3.00			4325.00	28.00 Bottom Packers & Anchor

Total Tool Length: 50.50



**TRILOBITE
TESTING, INC**

DRILL STEM TEST REPORT

FLUID SUMMARY

Landmark Resources Inc.

28-16s-34w Scott,KS

1616 S. Voss Rd.Suite 600
Houston, TX 77057

Wesseler #1-28

Job Ticket: 61678

DST#: 2

ATTN: Terry McLeod

Test Start: 2015.04.25 @ 11:45:00

Mud and Cushion Information

Mud Type: Gel Chem

Cushion Type:

Oil API:

deg API

Mud Weight: 9.00 lb/gal

Cushion Length:

ft

Water Salinity:

44000 ppm

Viscosity: 56.00 sec/qt

Cushion Volume:

bbbl

Water Loss: 7.98 in³

Gas Cushion Type:

Resistivity: ohm.m

Gas Cushion Pressure:

psig

Salinity: 5000.00 ppm

Filter Cake: 1.00 inches

Recovery Information

Recovery Table

Length ft	Description	Volume bbbl
760.00	MW 5m 95w	8.201
140.00	OSMW 30m 70w	1.964

Total Length: 900.00 ft Total Volume: 10.165 bbl

Num Fluid Samples: 0

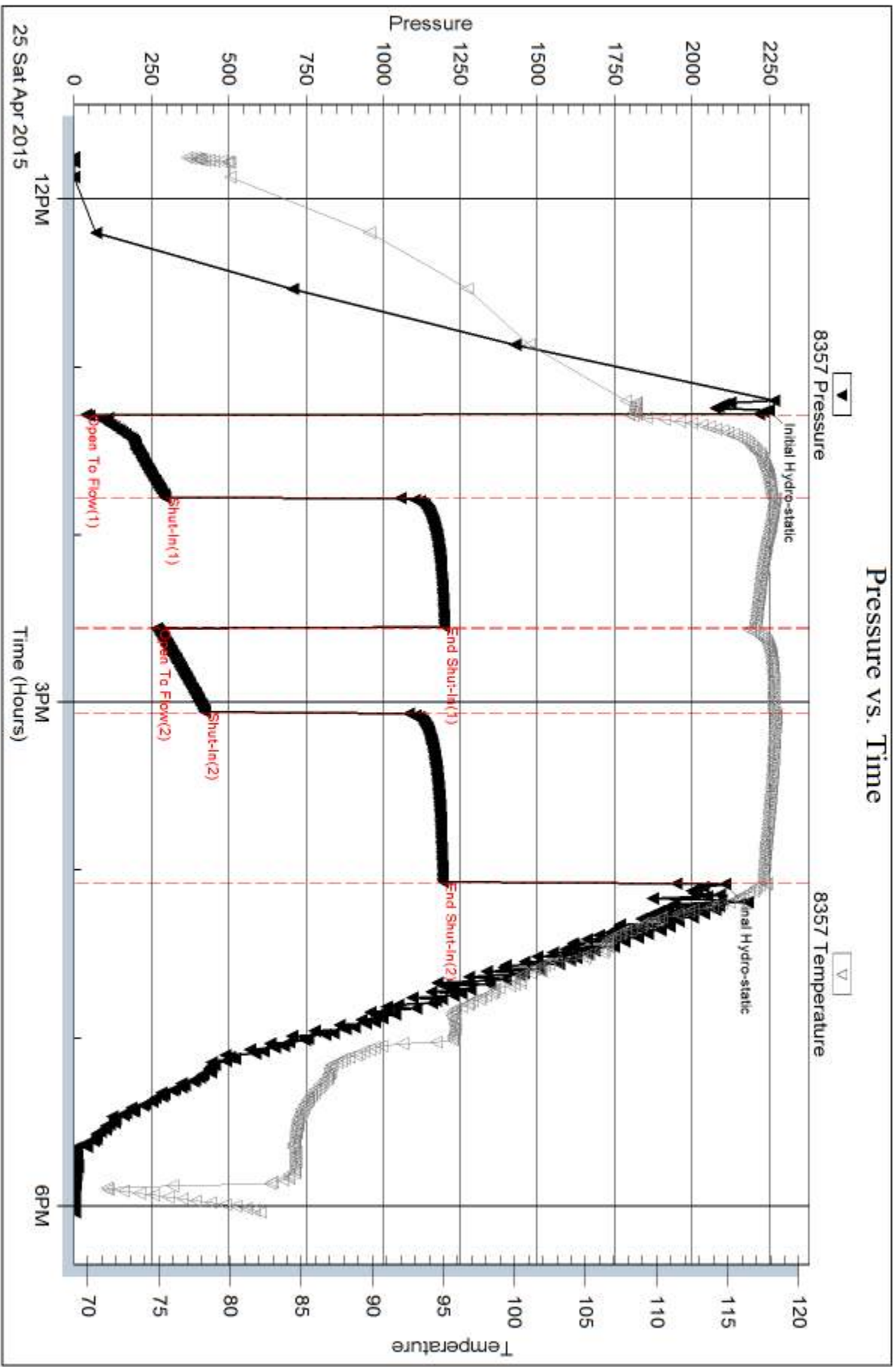
Num Gas Bombs: 0

Serial #:

Laboratory Name:

Laboratory Location:

Recovery Comments: RW: .190 @ 63 Degrees F = 44000 PPM

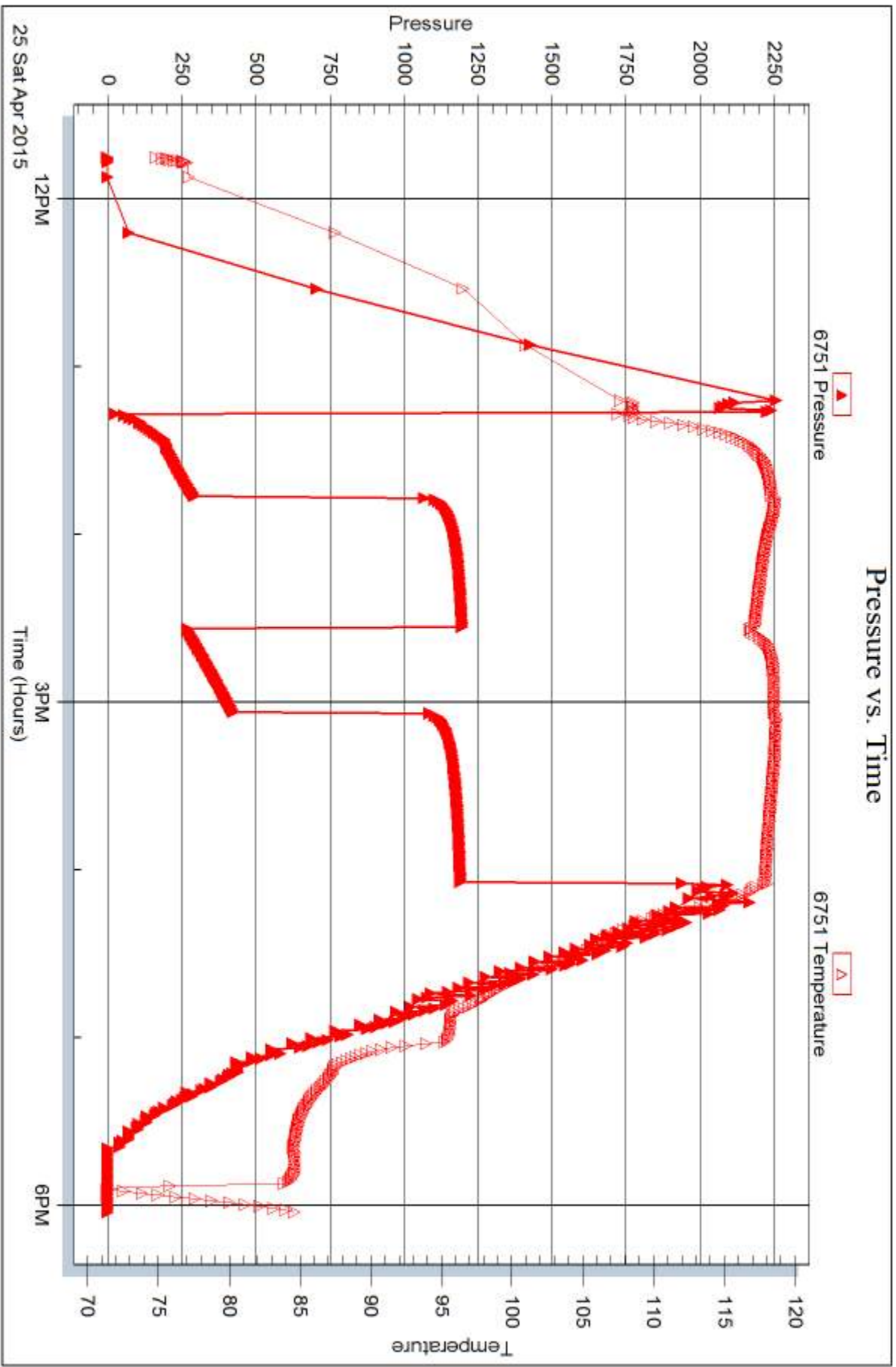


Serial #: 6751

Outside Landmark Resources Inc.

Wesseler #1-28

DST Test Number: 2



Trilobite Testing, Inc

Ref. No: 61678

Printed: 2015.04.29 @ 10:18:19



DRILL STEM TEST REPORT

Prepared For: **Landmark Resources Inc.**

1616 S. Voss Rd. Suite 600
Houston, TX 77057

ATTN: Terry McLeod

Wesseler #1-28

28-16s-34w Scott,KS

Start Date: 2015.04.26 @ 09:24:00

End Date: 2015.04.26 @ 17:43:20

Job Ticket #: 61679 DST #: 3

Trilobite Testing, Inc
1515 Commerce Parkway Hays, KS 67601
ph: 785-625-4778 fax: 785-625-5620

Printed: 2015.04.29 @ 10:17:42



**TRILOBITE
TESTING, INC**

DRILL STEM TEST REPORT

Landmark Resources Inc.

28-16s-34w Scott,KS

1616 S. Voss Rd.Suite 600
Houston, TX 77057

Wesseler #1-28

Job Ticket: 61679

DST#: 3

ATTN: Terry McLeod

Test Start: 2015.04.26 @ 09:24:00

GENERAL INFORMATION:

Formation: **Marmaton**

Deviated: No Whipstock: ft (KB)

Time Tool Opened: 11:42:30

Time Test Ended: 17:43:20

Test Type: Conventional Bottom Hole (Reset)

Tester: Chuck Smith

Unit No: 61

Interval: 4477.00 ft (KB) To 4495.00 ft (KB) (TVD)

Reference Elevations: 3146.00 ft (KB)

Total Depth: 4495.00 ft (KB) (TVD)

3135.00 ft (CF)

Hole Diameter: 7.88 inches Hole Condition: Good

KB to GR/CF: 11.00 ft

Serial #: 8357

Inside

Press@RunDepth: 277.55 psig @ 4478.00 ft (KB)

Capacity: 8000.00 psig

Start Date: 2015.04.26

End Date:

2015.04.26

Last Calib.: 2015.04.26

Start Time: 09:24:02

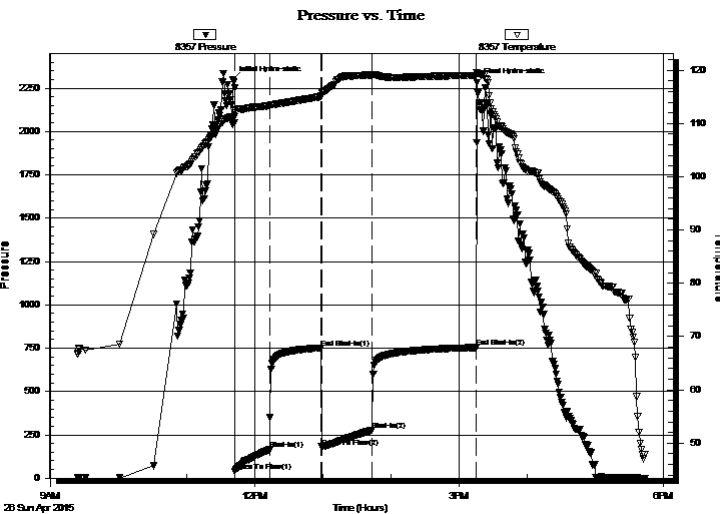
End Time:

17:43:19

Time On Btm: 2015.04.26 @ 11:40:40

Time Off Btm: 2015.04.26 @ 15:15:50

TEST COMMENT: 30- B.O.B. @ 8 min.
45- 5" Return.
45- B.O.B. @ 12 min.
90- B.O.B. @ 70 min.



PRESSURE SUMMARY

Time (Min.)	Pressure (psig)	Temp (deg F)	Annotation
0	2296.13	111.28	Initial Hydro-static
2	40.31	110.17	Open To Flow (1)
33	163.98	113.34	Shut-In(1)
78	751.78	115.03	End Shut-In(1)
79	180.36	115.19	Open To Flow (2)
123	277.55	119.06	Shut-In(2)
215	753.80	119.05	End Shut-In(2)
216	2282.28	119.48	Final Hydro-static

Recovery

Length (ft)	Description	Volume (bbl)
0.00	567' GIP	0.00
60.00	GMCO 15g 10m 75o	0.30
383.00	GO 15g 85o	3.46
252.00	GO 25g 75o	3.53

* Recovery from multiple tests

Gas Rates

	Choke (inches)	Pressure (psig)	Gas Rate (Mcf/d)



**TRILOBITE
TESTING, INC**

DRILL STEM TEST REPORT

TOOL DIAGRAM

Landmark Resources Inc.

28-16s-34w Scott,KS

1616 S. Voss Rd.Suite 600
Houston, TX 77057

Wesseler #1-28

Job Ticket: 61679

DST#: 3

ATTN: Terry McLeod

Test Start: 2015.04.26 @ 09:24:00

Tool Information

Drill Pipe:	Length: 4215.00 ft	Diameter: 3.80 inches	Volume: 59.13 bbl	Tool Weight: 2100.00 lb
Heavy Wt. Pipe:	Length: 0.00 ft	Diameter: inches	Volume: 0.00 bbl	Weight set on Packer: 30000.00 lb
Drill Collar:	Length: 270.00 ft	Diameter: 2.25 inches	Volume: 1.33 bbl	Weight to Pull Loose: 85000.00 lb
			<u>Total Volume: 60.46 bbl</u>	Tool Chased 0.00 ft
Drill Pipe Above KB:	30.50 ft			String Weight: Initial 78000.00 lb
Depth to Top Packer:	4477.00 ft			Final 80000.00 lb
Depth to Bottom Packer:	ft			
Interval between Packers:	18.00 ft			
Tool Length:	40.50 ft			
Number of Packers:	2	Diameter: 6.75 inches		

Tool Comments:

Tool Description	Length (ft)	Serial No.	Position	Depth (ft)	Accum. Lengths
------------------	-------------	------------	----------	------------	----------------

Change Over Sub	1.00			4455.50	
Shut In Tool	5.00			4460.50	
Hydraulic tool	5.00			4465.50	
Safety Joint	2.50			4468.00	
Packer	5.00			4473.00	22.50 Bottom Of Top Packer
Packer	4.00			4477.00	
Stubb	1.00			4478.00	
Recorder	0.00	8357	Inside	4478.00	
Recorder	0.00	6751	Outside	4478.00	
Perforations	14.00			4492.00	
Bullnose	3.00			4495.00	18.00 Bottom Packers & Anchor

Total Tool Length: 40.50



**TRILOBITE
TESTING, INC**

DRILL STEM TEST REPORT

FLUID SUMMARY

Landmark Resources Inc.

28-16s-34w Scott,KS

1616 S. Voss Rd.Suite 600
Houston, TX 77057

Wesseler #1-28

Job Ticket: 61679

DST#: 3

ATTN: Terry McLeod

Test Start: 2015.04.26 @ 09:24:00

Mud and Cushion Information

Mud Type: Gel Chem

Cushion Type:

Oil API:

31 deg API

Mud Weight: 9.00 lb/gal

Cushion Length:

ft

Water Salinity:

ppm

Viscosity: 54.00 sec/qt

Cushion Volume:

bbbl

Water Loss: 7.98 in³

Gas Cushion Type:

Resistivity: ohm.m

Gas Cushion Pressure:

psig

Salinity: 6000.00 ppm

Filter Cake: 1.00 inches

Recovery Information

Recovery Table

Length ft	Description	Volume bbl
0.00	567' GIP	0.000
60.00	GMCO 15g 10m 75o	0.295
383.00	GO 15g 85o	3.459
252.00	GO 25g 75o	3.535

Total Length: 695.00 ft Total Volume: 7.289 bbl

Num Fluid Samples: 0

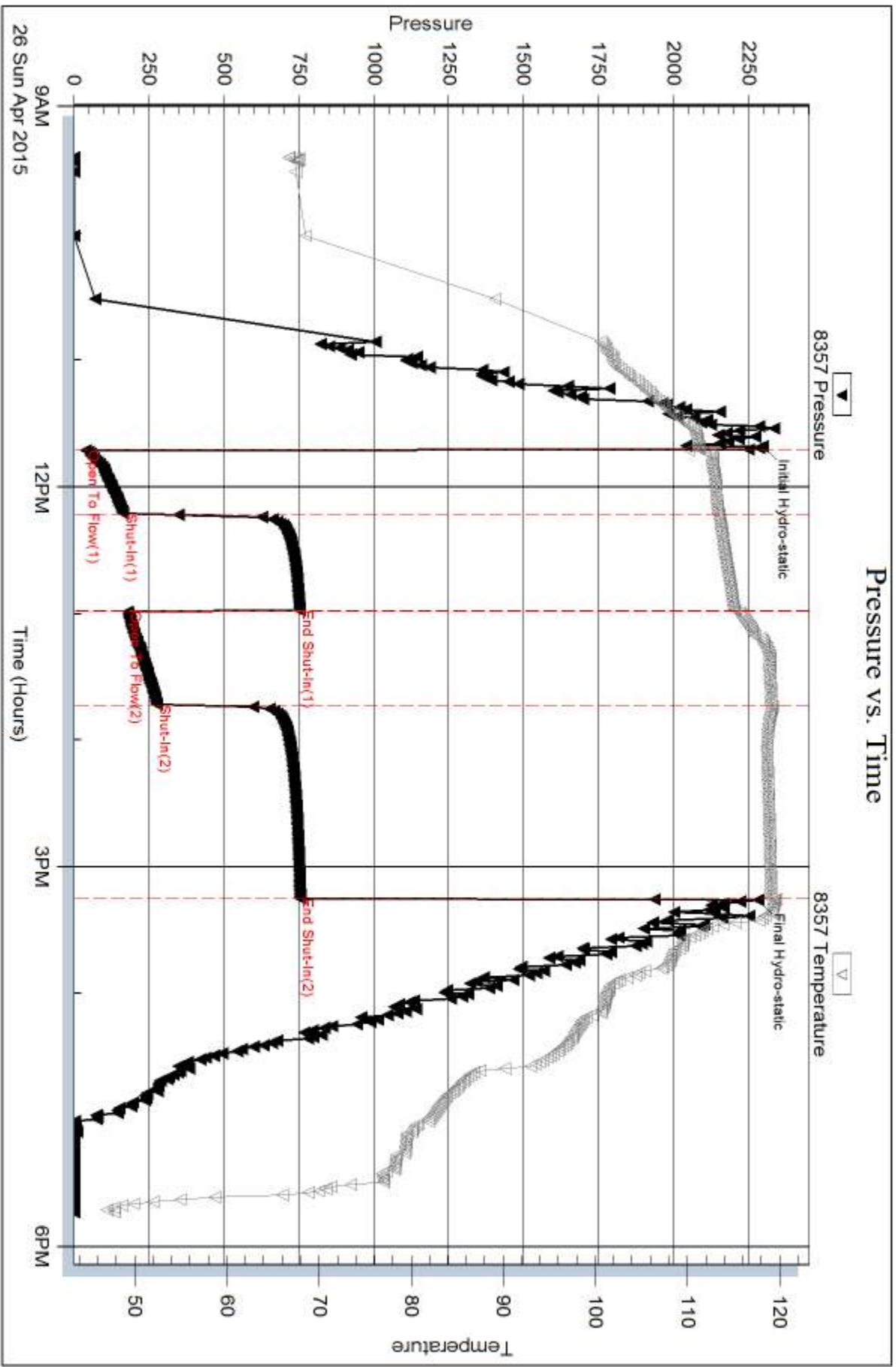
Num Gas Bombs: 0

Serial #:

Laboratory Name:

Laboratory Location:

Recovery Comments: API: 29 @ 40 Degrees F = 31

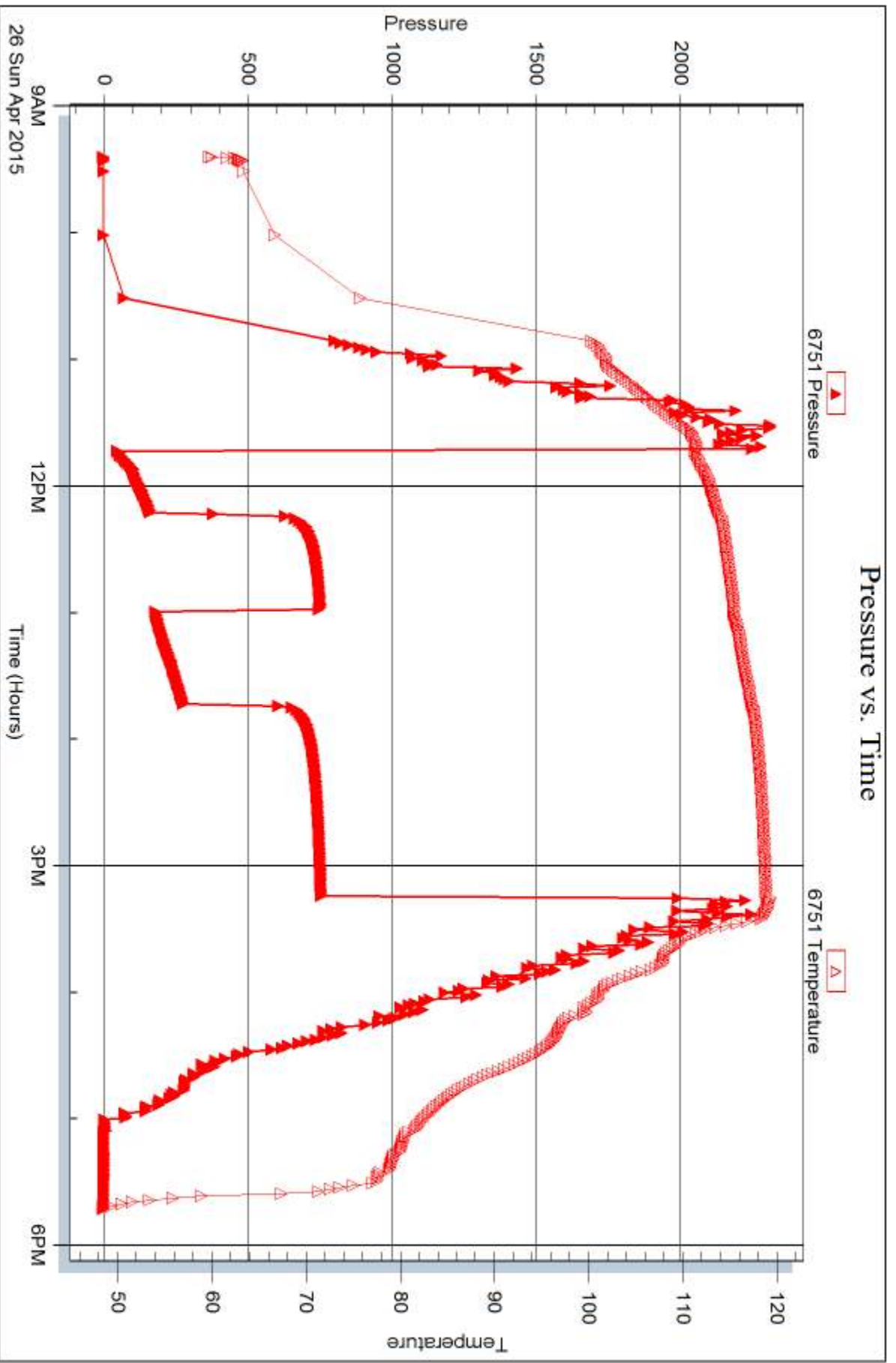


Serial #: 6751

Outside Landmark Resources Inc.

Wessel #1-28

DST Test Number: 3





DRILL STEM TEST REPORT

Prepared For: **Landmark Resources Inc.**

1616 S. Voss Rd. Suite 600
Houston, TX 77057

ATTN: Terry McLeod

Wesseler #1-28

28-16s-34w Scott,KS

Start Date: 2015.04.27 @ 02:15:00

End Date: 2015.04.27 @ 09:57:30

Job Ticket #: 61680 DST #: 4

Trilobite Testing, Inc
1515 Commerce Parkway Hays, KS 67601
ph: 785-625-4778 fax: 785-625-5620

Printed: 2015.04.29 @ 09:57:47



TRILOBITE TESTING, INC

DRILL STEM TEST REPORT

Landmark Resources Inc.

28-16s-34w Scott,KS

1616 S. Voss Rd. Suite 600
Houston, TX 77057

Wesseler #1-28

Job Ticket: 61680

DST#: 4

ATTN: Terry McLeod

Test Start: 2015.04.27 @ 02:15:00

GENERAL INFORMATION:

Formation: **Altamont A-B**

Deviated: No Whipstock: ft (KB)

Time Tool Opened: 04:29:20

Time Test Ended: 09:57:30

Test Type: Conventional Bottom Hole (Reset)

Tester: Chuck Smith

Unit No: 61

Interval: 4493.00 ft (KB) To 4545.00 ft (KB) (TVD)

Reference Elevations: 3146.00 ft (KB)

Total Depth: 4545.00 ft (KB) (TVD)

3135.00 ft (CF)

Hole Diameter: 7.88 inches Hole Condition: Good

KB to GR/CF: 11.00 ft

Serial #: 8357

Inside

Press@RunDepth: 172.18 psig @ 4494.00 ft (KB)

Capacity: 8000.00 psig

Start Date: 2015.04.27

End Date:

2015.04.27

Last Calib.:

2015.04.27

Start Time: 02:15:02

End Time:

09:57:30

Time On Btm:

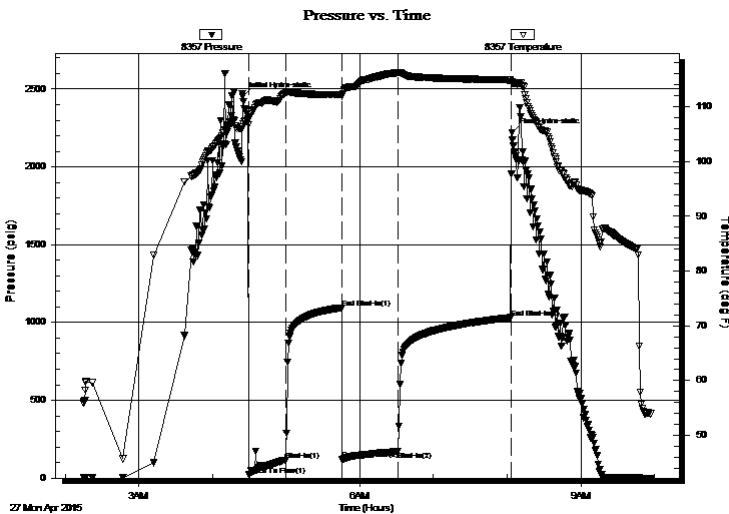
2015.04.27 @ 04:24:30

Time Off Btm:

2015.04.27 @ 08:03:50

TEST COMMENT: 30- 6" Blow .
45- No return.
45- 6" Blow .
90- No return.

PRESSURE SUMMARY



Time (Min.)	Pressure (psig)	Temp (deg F)	Annotation
0	2451.18	106.32	Initial Hydro-static
5	20.38	106.80	Open To Flow (1)
35	117.28	112.50	Shut-In(1)
81	1094.80	112.25	End Shut-In(1)
81	122.30	111.95	Open To Flow (2)
127	172.18	116.27	Shut-In(2)
219	1031.79	114.91	End Shut-In(2)
220	2221.13	114.39	Final Hydro-static

Recovery

Gas Rates

Length (ft)	Description	Volume (bbl)
343.00	OSMW 50m 50w	2.35
45.00	OSWM 45w 55m	0.63

	Choke (inches)	Pressure (psig)	Gas Rate (Mcf/d)

* Recovery from multiple tests



**TRILOBITE
TESTING, INC**

DRILL STEM TEST REPORT

TOOL DIAGRAM

Landmark Resources Inc.

28-16s-34w Scott,KS

1616 S. Voss Rd.Suite 600
Houston, TX 77057

Wesseler #1-28

Job Ticket: 61680

DST#: 4

ATTN: Terry McLeod

Test Start: 2015.04.27 @ 02:15:00

Tool Information

Drill Pipe:	Length: 4214.00 ft	Diameter: 3.80 inches	Volume: 59.11 bbl	Tool Weight: 2100.00 lb
Heavy Wt. Pipe:	Length: 0.00 ft	Diameter: inches	Volume: 0.00 bbl	Weight set on Packer: 30000.00 lb
Drill Collar:	Length: 270.00 ft	Diameter: 2.25 inches	Volume: 1.33 bbl	Weight to Pull Loose: 85000.00 lb
			<u>Total Volume: 60.44 bbl</u>	Tool Chased 0.00 ft
Drill Pipe Above KB:	13.50 ft			String Weight: Initial 80000.00 lb
Depth to Top Packer:	4493.00 ft			Final 80000.00 lb
Depth to Bottom Packer:	ft			
Interval between Packers:	52.00 ft			
Tool Length:	74.50 ft			
Number of Packers:	2	Diameter: 6.75 inches		

Tool Comments:

Tool Description

Tool Description	Length (ft)	Serial No.	Position	Depth (ft)	Accum. Lengths
Change Over Sub	1.00			4471.50	
Shut In Tool	5.00			4476.50	
Hydraulic tool	5.00			4481.50	
Safety Joint	2.50			4484.00	
Packer	5.00			4489.00	22.50 Bottom Of Top Packer
Packer	4.00			4493.00	
Stubb	1.00			4494.00	
Recorder	0.00	8357	Inside	4494.00	
Recorder	0.00	6751	Outside	4494.00	
Perforations	14.00			4508.00	
Change Over Sub	1.00			4509.00	
Drill Pipe	32.00			4541.00	
Change Over Sub	1.00			4542.00	
Bullnose	3.00			4545.00	52.00 Bottom Packers & Anchor

Total Tool Length: 74.50



**TRILOBITE
TESTING, INC**

DRILL STEM TEST REPORT

FLUID SUMMARY

Landmark Resources Inc.

28-16s-34w Scott,KS

1616 S. Voss Rd.Suite 600
Houston, TX 77057

Wesseler #1-28

Job Ticket: 61680

DST#: 4

ATTN: Terry McLeod

Test Start: 2015.04.27 @ 02:15:00

Mud and Cushion Information

Mud Type: Gel Chem

Cushion Type:

Oil API:

deg API

Mud Weight: 9.00 lb/gal

Cushion Length:

ft

Water Salinity:

48000 ppm

Viscosity: 60.00 sec/qt

Cushion Volume:

bbbl

Water Loss: 7.96 in³

Gas Cushion Type:

Resistivity: ohm.m

Gas Cushion Pressure:

psig

Salinity: 6000.00 ppm

Filter Cake: 1.00 inches

Recovery Information

Recovery Table

Length ft	Description	Volume bbbl
343.00	OSMW 50m 50w	2.352
45.00	OSWM 45w 55m	0.631

Total Length: 388.00 ft Total Volume: 2.983 bbl

Num Fluid Samples: 0

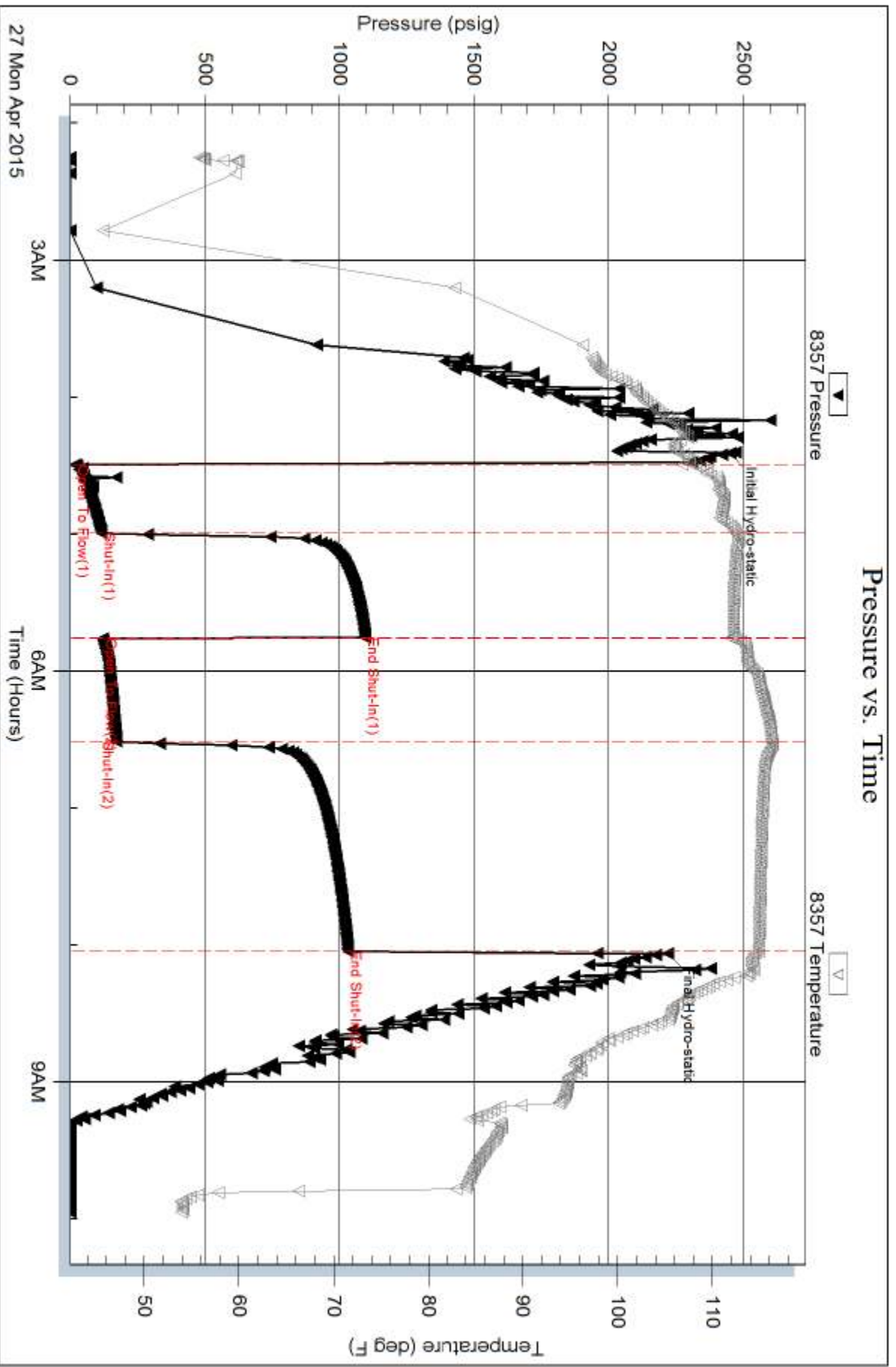
Num Gas Bombs: 0

Serial #:

Laboratory Name:

Laboratory Location:

Recovery Comments: RW: .245 @ 45 Degrees F = 48000 PPM

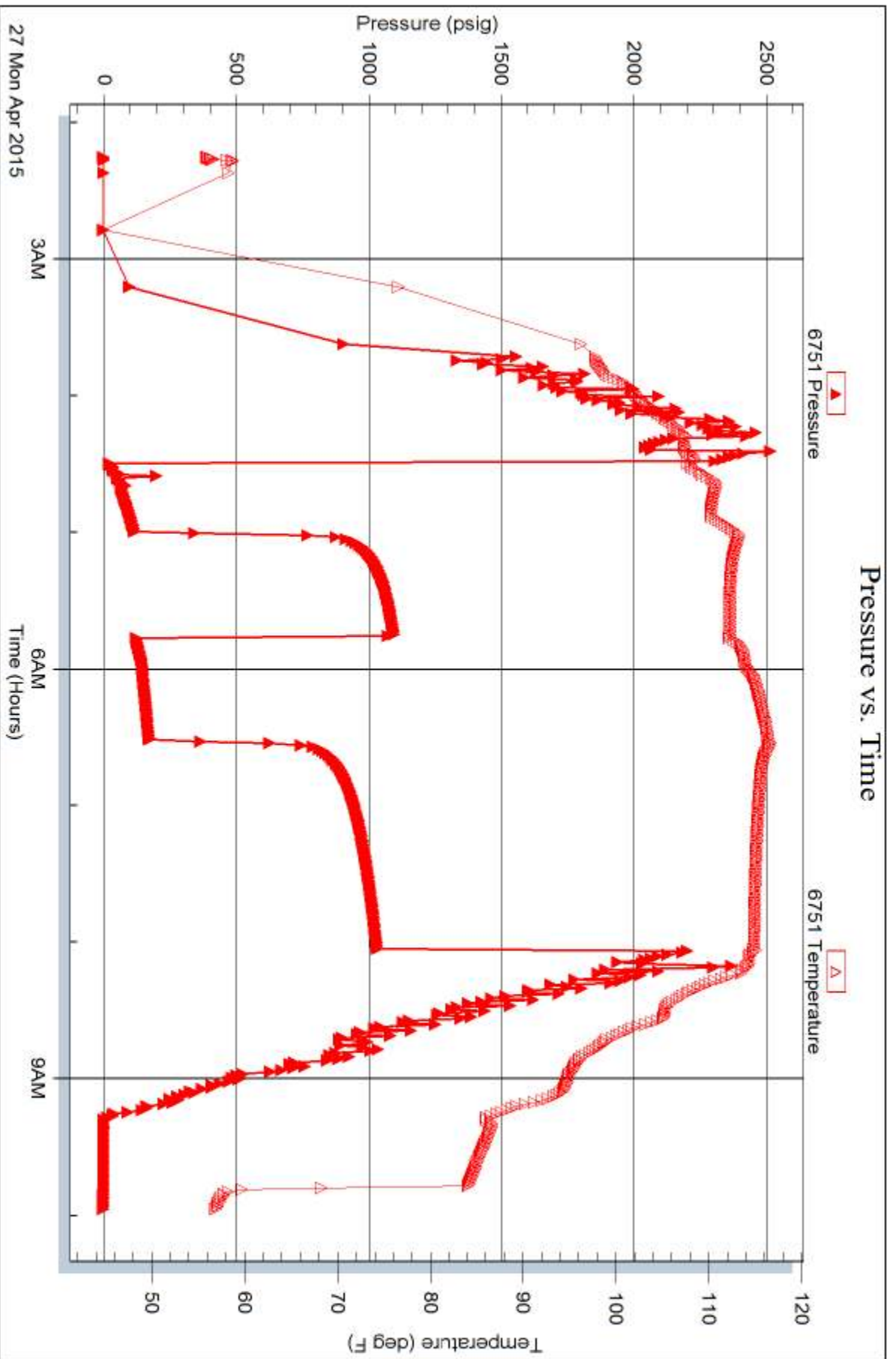


Serial #: 6751

Outside Landmark Resources Inc.

Wesseler #1-28

DST Test Number: 4





TRILOBITE TESTING INC.

1515 Commerce Parkway • Hays, Kansas 67601

Test Ticket

NO. 61677

Well Name & No. Wesseker #1-28 Test No. 1 Date 4-24-15
 Company Landmark Resources Inc. Elevation 3146 KB 3135 GL
 Address 1616 E Voss Rd. STE 600 Houston, TX 77057
 Co. Rep / Geo. Terry McLeod Rig MDC #21
 Location: Sec. 28 Twp. 16s Rge. 24w Co. Scott State KS

Interval Tested 4264-4290 Zone Tested LKC 'I'
 Anchor Length 26 Drill Pipe Run 3993 Mud Wt. 9.2
 Top Packer Depth 4260 Drill Collars Run 270 Vis 50
 Bottom Packer Depth 4264 Wt. Pipe Run 0 WL 8.0
 Total Depth 4290 Chlorides 5200 ppm System LCM 2*
 Blow Description 6 1/2" Blow.
No return.
8" Blow.

return. Surface return died @ 15 min.

Rec	Feet of	%gas	%oil	%water	%mud
<u>200 80</u>	<u>60</u>	<u>5</u>	<u>95</u>		
<u>60</u>	<u>GMC0</u>	<u>10</u>	<u>85</u>		<u>5</u>
<u>60</u>	<u>GOCM</u>	<u>10</u>	<u>30</u>		<u>60</u>
<u>45' Weak GIP</u>					

Rec Total 320 BHT 115 Gravity 25 API RW @ °F Chlorides ppm

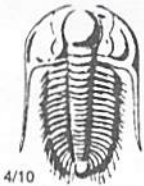
(A) Initial Hydrostatic 2221 Test 1150 T-On Location 19:52
 (B) First Initial Flow 20 Jars T-Started 20:20
 (C) First Final Flow 86 Safety Joint 75 T-Open 22:43
 (D) Initial Shut-In 1189 Circ Sub N/C T-Pulled 1:45
 (E) Second Initial Flow 92 Hourly Standby T-Out 4:11
 (F) Second Final Flow 146 Mileage 52RT 52
 (G) Final Shut-In 1179 Sampler
 (H) Final Hydrostatic 2117 Straddle
 Shale Packer
 Extra Packer
 Extra Recorder
 Day Standby
 Accessibility
 Sub Total 1277

Initial Open 30
 Initial Shut-In 45
 Final Flow 45
 Final Shut-In 60

Ruined Shale Packer
 Ruined Packer
 Extra Copies
 Sub Total 0
 Total 1277
 MP/DST Disc't

Approved By Terry L. McLeod Our Representative Chuck Smith

TriLOBITE TESTING INC. shall not be liable for damaged of any kind of the property or personnel of the one for whom a test is made, or for any loss suffered or sustained, directly or indirectly, through the use of its equipment, or its statements or opinion concerning the results of any test, tools lost or damaged in the hole shall be paid for at cost by the party for whom the test is made.



TRILOBITE TESTING INC.

1515 Commerce Parkway • Hays, Kansas 67601

Test Ticket

NO. 61678

Well Name & No. Wesseler #1-28 Test No. 2 Date 4-25-15
 Company Landmark Resources Inc. Elevation 3146 KB 3135 GL
 Address 1616 E. Voss STE 600 Houston, TX 77057
 Co. Rep / Geo. Terry McLeod Rig MDC #21
 Location: Sec. 28 Twp. 16s Rge. 24w Co. Scott State KS

Interval Tested 4297-4325 Zone Tested LKC 'J'
 Anchor Length 28 Drill Pipe Run 4025 Mud Wt. 9.3
 Top Packer Depth 4293 Drill Collars Run 270 Vis 56
 Bottom Packer Depth 4297 Wt. Pipe Run 0 WL 8.0
 Total Depth 4325 Chlorides 5000 ppm System LCM 2#
 Blow Description B.O.B. @ 10 min.
No return.
B.O.B. @ 12 min.
No return.

Rec	Feet of	%gas	%oil	%water	%mud
<u>140</u>	<u>05 MW</u>		<u>70</u>	<u>30</u>	
<u>760</u>	<u>MW</u>		<u>95</u>	<u>5</u>	
Rec	Feet of	%gas	%oil	%water	%mud
Rec	Feet of	%gas	%oil	%water	%mud
Rec	Feet of	%gas	%oil	%water	%mud

Rec Total 900 BHT 118 Gravity — API RW .190 @ 63 °F Chlorides 44000 ppm
 (A) Initial Hydrostatic 2247 Test 1150 T-On Location 11:45
 (B) First Initial Flow 39 Jars _____ T-Started 11:45
 (C) First Final Flow 295 Safety Joint 75 T-Open 13:17
 (D) Initial Shut-In 1199 Circ Sub N/C T-Pulled 16:04
 (E) Second Initial Flow 269 Hourly Standby _____ T-Out 18:02
 (F) Second Final Flow 424 Mileage 52 Comments _____
 (G) Final Shut-In 1194 Sampler _____
 (H) Final Hydrostatic 2106 Straddle _____
 Initial Open 30 Shale Packer _____
 Initial Shut-In 45 Shale Packer _____
 Final Flow 30 Extra Packer _____
 Final Shut-In 60 Extra Recorder _____
 Sub Total 1277 Day Standby _____
 Total 1277 Accessibility _____
 MP/DST Disc't _____

Approved By Terry McLeod Our Representative Chuck Smith
 Trilobite Testing Inc. shall not be liable for damaged or any kind of the property or personnel of the one for whom a test is made, or for any loss suffered or sustained, directly or indirectly, through the use of its equipment, or its statements or opinion concerning the results of any test, tools lost or damaged in the hole shall be paid for at cost by the party for whom the test is made.



TRILOBITE TESTING INC.

1515 Commerce Parkway • Hays, Kansas 67601

Test Ticket

NO. 61679

Well Name & No. Wesseler #1-28 Test No. 3 Date 4-26-15
 Company Landmark Resources Inc. Elevation 3146 KB 3135 GL
 Address 1616 S. Voss STE 600 Houston, TX 77057
 Co. Rep / Geo. Terry McLead Rig M.D.C.#21
 Location: Sec. 28 Twp. 16s Rge. 24w Co. Scott State KS

Interval Tested 4477 - 4495 Zone Tested Marmaton
 Anchor Length 18 Drill Pipe Run 4215 Mud Wt. 9.3
 Top Packer Depth 4473 Drill Collars Run 270 Vis 54
 Bottom Packer Depth 4477 Wt. Pipe Run 0 WL 8.0
 Total Depth 4495 Chlorides 6000 ppm System LCM 2^m
 Blow Description B.O.B. @ 8 min
5" Return
B.O.B. @ 12 min.
B.O.B. @ 70 min.

Rec	Feet of	%gas	%oil	%water	%mud
<u>252</u>	<u>GO</u>	<u>25</u>	<u>75</u>		
<u>383</u>	<u>GO</u>	<u>15</u>	<u>85</u>		
<u>60</u>	<u>GMC0</u>	<u>15</u>	<u>75</u>		<u>10</u>
	<u>567' GIP</u>				

Rec Total 695 BHT 119 Gravity 2.31 API RW 1150 @ 1150 °F Chlorides — ppm
 (A) Initial Hydrostatic 2296 Test 1150 T-On Location 9:20
 (B) First Initial Flow 40 Jars _____ T-Started 9:24
 (C) First Final Flow 164 Safety Joint 75 T-Open 11:
 (D) Initial Shut-In 752 Circ Sub N/C T-Pulled 15:
 (E) Second Initial Flow 180 Hourly Standby _____ T-Out 17:
 (F) Second Final Flow 278 Mileage 52 Comments _____
 (G) Final Shut-In 754 Sampler _____
 (H) Final Hydrostatic 2282 Straddle _____
 Initial Open 30 Shale Packer 250 Ruined Shale Packer _____
 Initial Shut-In 45 Extra Packer _____ Ruined Packer _____
 Final Flow 45 Extra Recorder _____ Extra Copies _____
 Final Shut-In 90 Day Standby _____ Sub Total 0
 Sub Total 1527 Accessibility _____ Total 1527
 Sub Total 1527 MP/DST Disc't _____

Approved By Terry McLead Our Representative Chuck Smith

TriLOBITE TESTING INC. shall not be liable for damaged of any kind of the property or personnel of the one for whom a test is made, or for any loss suffered or sustained, directly or indirectly, through the use of its equipment, or its statements or opinion concerning the results of any test, tools lost or damaged in the hole shall be paid for at cost by the party for whom the test is made.



TRILOBITE TESTING INC.

1515 Commerce Parkway • Hays, Kansas 67601

Test Ticket

NO. 61680

Well Name & No. Wesseler #1-28 Test No. 4 Date 4-27-15
 Company Landmark Resources Inc. Elevation 3146 KB 3135 GL
 Address 1616 S Voss STE 600 Houston TX 77057
 Co. Rep / Geo. Terry McLeod Rig M.D.C. #21
 Location: Sec. 28 Twp. 16s Rge. 24w Co. Scott State KS

Interval Tested 4493 - 4545 Zone Tested Altament 'A-B'
 Anchor Length 52 Drill Pipe Run 4214 Mud Wt. 9.3
 Top Packer Depth 4489 Drill Collars Run 270 Vis 60
 Bottom Packer Depth 4493 Wt. Pipe Run 0 WL 8.0
 Total Depth 4545 Chlorides 6000 ppm System LCM 2"
 Blow Description 6" Blow
No return.
6" Blow.
No return.

Rec	Feet of	%gas	%oil	%water	%mud
<u>45</u>	<u>DSWM</u>			<u>45%</u>	<u>55%</u>
<u>343</u>	<u>DS MW</u>			<u>50%</u>	<u>50%</u>

Rec Total 388 BHT 115 Gravity — API RW — @ 45 ° F Chlorides 48000 ppm

(A) Initial Hydrostatic <u>2451</u>	<input checked="" type="checkbox"/> Test <u>1150</u>	T-On Location <u>2:15</u>
(B) First Initial Flow <u>20</u>	<input type="checkbox"/> Jars	T-Started <u>2:15</u>
(C) First Final Flow <u>117</u>	<input checked="" type="checkbox"/> Safety Joint <u>75</u>	T-Open <u>4:29</u>
(D) Initial Shut-In <u>1095</u>	<input checked="" type="checkbox"/> Circ Sub <u>NIC</u>	T-Pulled <u>8:03</u>
(E) Second Initial Flow <u>122</u>	<input type="checkbox"/> Hourly Standby	T-Out <u>9:58</u>
(F) Second Final Flow <u>172</u>	<input checked="" type="checkbox"/> Mileage <u>x2</u> <u>52+52</u>	Comments <u>Picked up tools</u>
(G) Final Shut-In <u>1032</u>	<input type="checkbox"/> Sampler	<u>4-28-15 10:00 am No test</u>
(H) Final Hydrostatic <u>2221</u>	<input type="checkbox"/> Straddle	<input checked="" type="checkbox"/> Ruined Shale Packer <u>320</u>
Initial Open <u>30</u>	<input checked="" type="checkbox"/> Shale Packer <u>250</u>	<input type="checkbox"/> Ruined Packer
Initial Shut-In <u>45</u>	<input type="checkbox"/> Extra Packer	<input type="checkbox"/> Extra Copies
Final Flow <u>45</u>	<input type="checkbox"/> Extra Recorder	Sub Total <u>320</u>
Final Shut-In <u>90</u>	<input type="checkbox"/> Day Standby	Total <u>1899</u>
	<input type="checkbox"/> Accessibility	MP/DST Disc't
	Sub Total <u>1579</u>	

Approved By Terry J. McLeod Our Representative Chuck Smith

TriLOBite Testing Inc. shall not be liable for damaged of any kind of the property or personnel of the one for whom a test is made, or for any loss suffered or sustained, directly or indirectly, through the use of its equipment, or its statements or opinion concerning the results of any test, tools lost or damaged in the hole shall be paid for at cost by the party for whom the test is made.